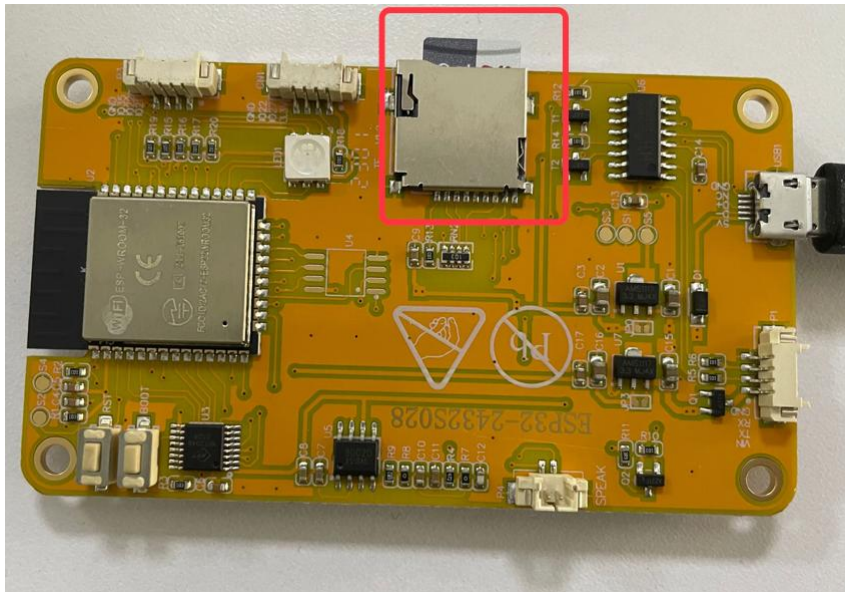


## ESP32 2.8 inch TFT Touch Screen 240\*320

### First Install TF Card



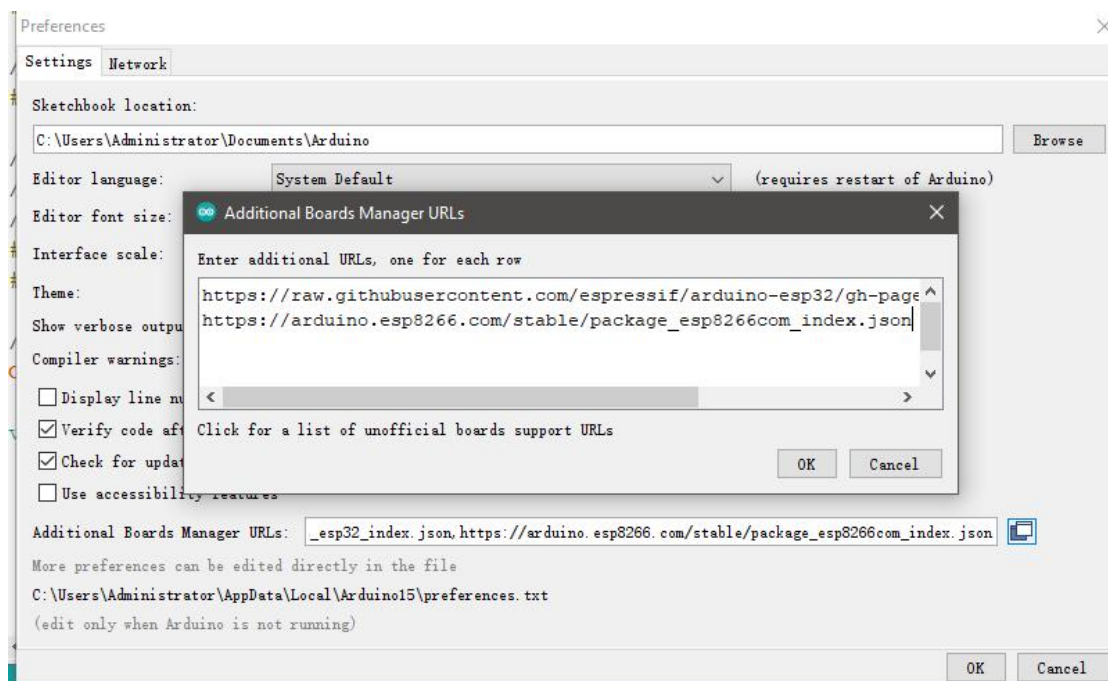
There are two ways to upload code to the screen:

1. upload code via arduino IDE
2. upload code via espressif flash tool

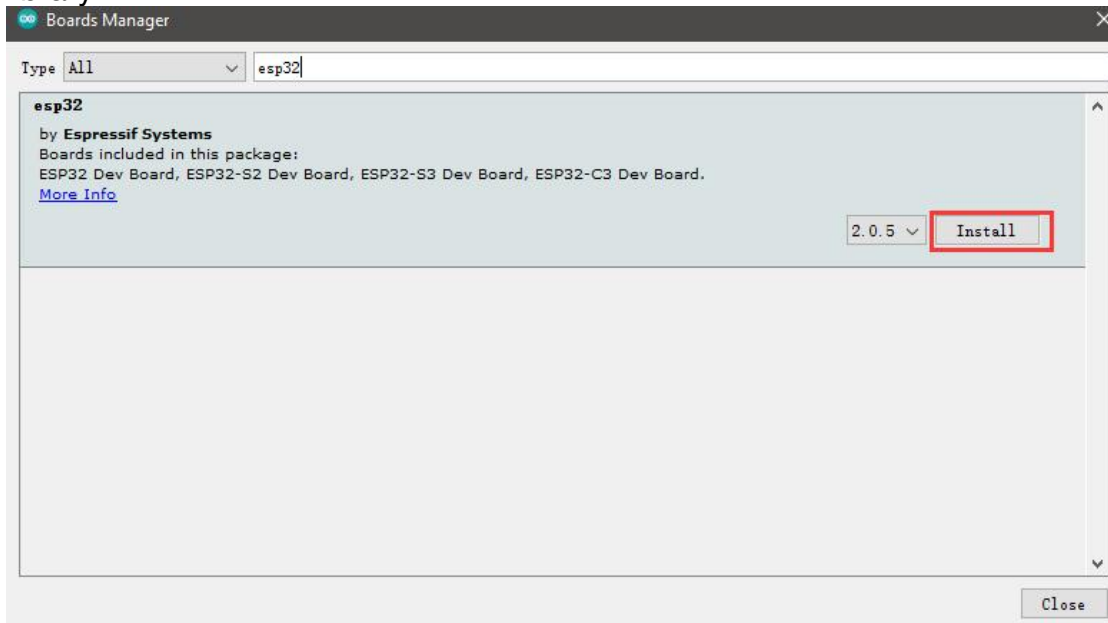
### Upload code via Arduino IDE:

Install the ESP32 boards

Select “File>Preferences>settings>Additional Boards Manager URLs” to fill the link: [https://raw.githubusercontent.com/espressif/arduino-esp32/gh-pages/package\\_esp32\\_dev\\_index.json](https://raw.githubusercontent.com/espressif/arduino-esp32/gh-pages/package_esp32_dev_index.json)

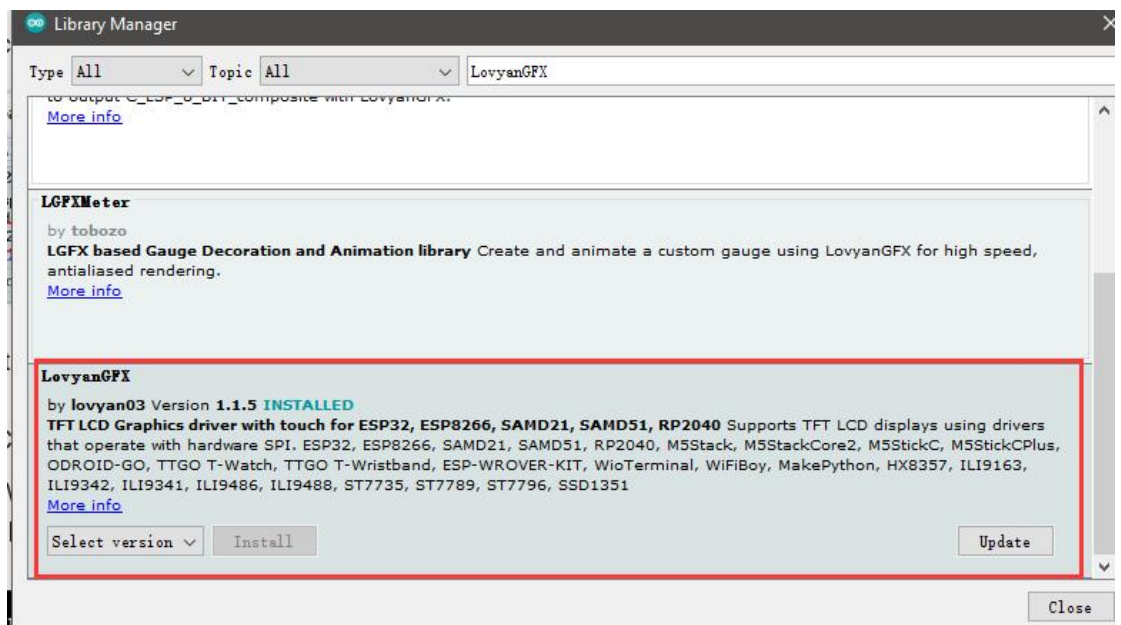


Click “Tools>Board>Boards Manager” to search for and install the ESP32 library:

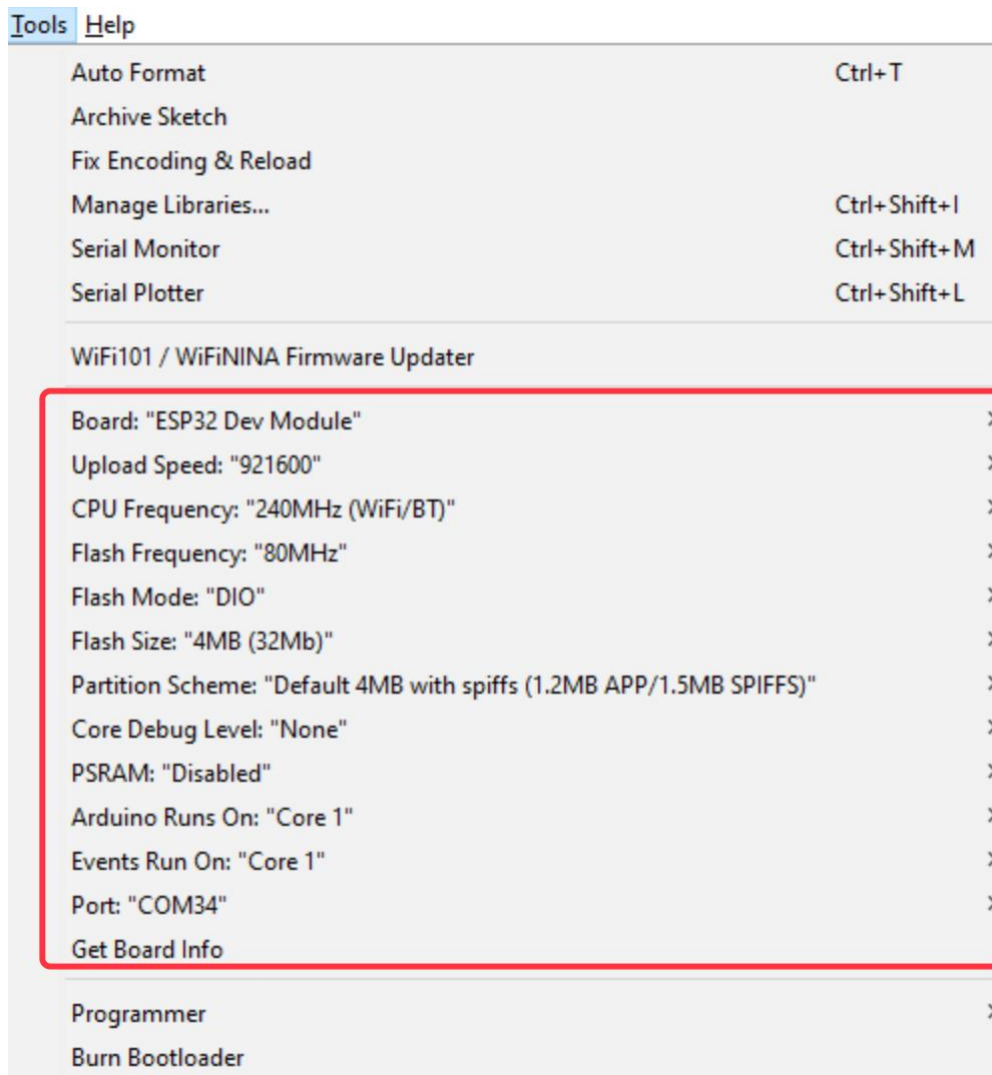


Install LovyanGFX

Click “Tools> Manager Libraries” to search for and install LovyanGFX library.



Select and set the parameter in the Tools menu, as the picture:



You can get the source code and bin file from below link:

<https://tinyurl.com/ESP32-2432S028>

Unzip the file and open it.

Verify and upload it.

After uploading, the screen will be displayed as follows, you should click on the four corners in sequence.

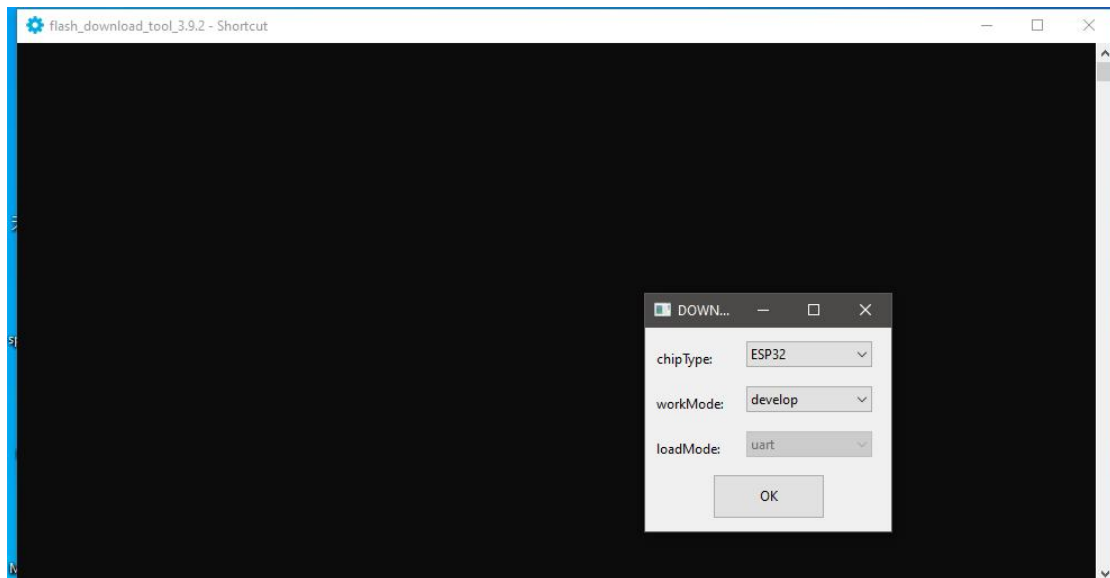


### Flash screen with espressif tool

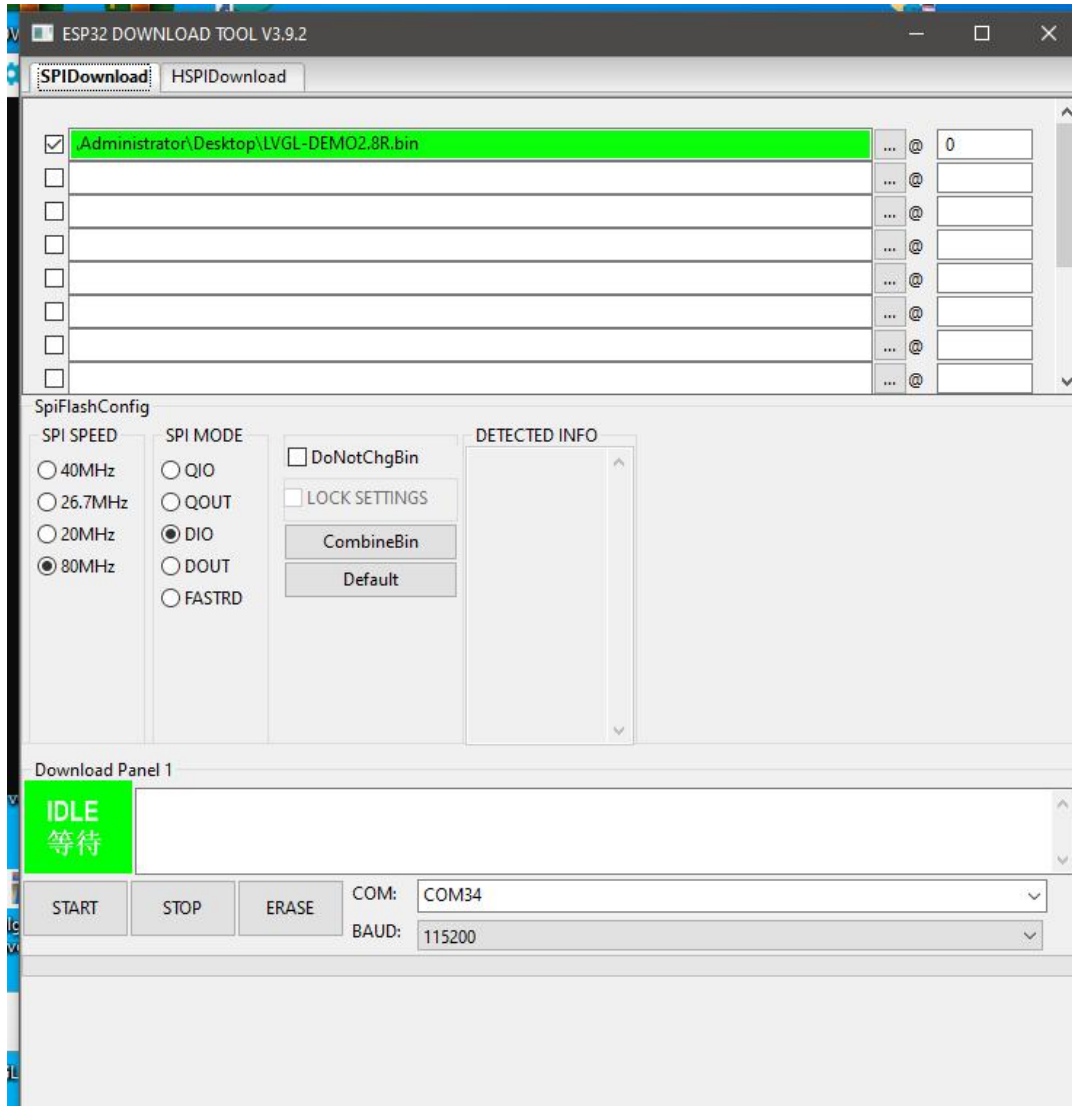
Flash Tool Download link:

<https://www.espressif.com.cn/en/support/download/other-tools>

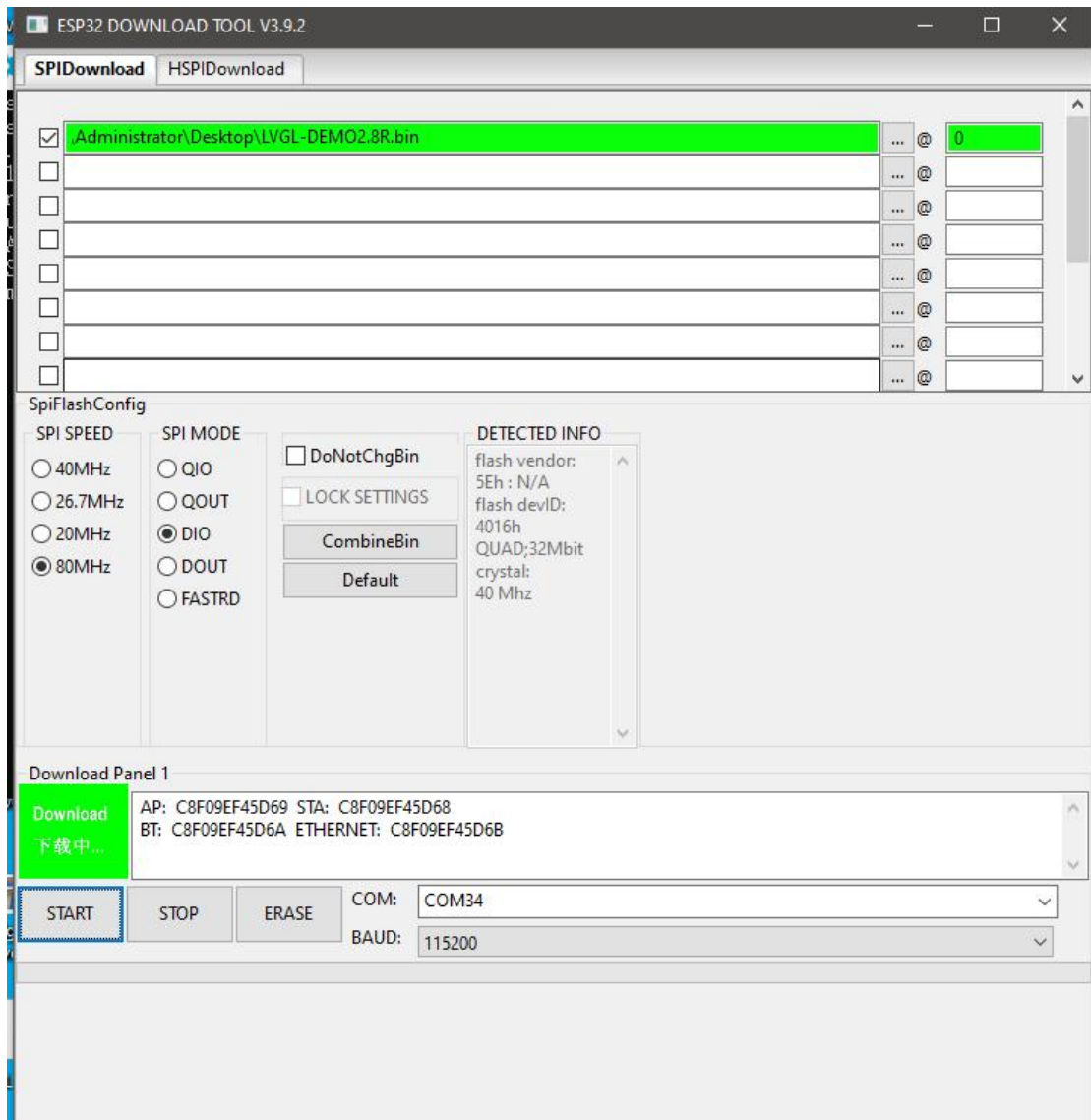
Open tool:



Choose bin file, make setting as below:



Click START



Finish

ESP32 DOWNLOAD TOOL V3.9.2

SPIDownload HSPIDownload

<input checked="" type="checkbox"/>	Administrator\Desktop\LVGL-DEMO2.8R.bin	...	@	0
<input type="checkbox"/>		...	@	
<input type="checkbox"/>		...	@	
<input type="checkbox"/>		...	@	
<input type="checkbox"/>		...	@	
<input type="checkbox"/>		...	@	
<input type="checkbox"/>		...	@	
<input type="checkbox"/>		...	@	

SpiFlashConfig

SPI SPEED:  40MHz  26.7MHz  20MHz  80MHz

SPI MODE:  QIO  QOUT  DIO  DOUT  FASTRD

DoNotChgBin  
 LOCK SETTINGS  
CombineBin  
Default

DETECTED INFO  
flash vendor: 5Eh : N/A  
flash devID: 4016h  
QUAD:32Mbit  
crystal: 40 Mhz

Download Panel 1

**FINISH**  
完成

AP: C8F09EF45D69 STA: C8F09EF45D68  
BT: C8F09EF45D6A ETHERNET: C8F09EF45D6B

START STOP ERASE

COM: COM34  
BAUD: 115200

After finish flashing, unplug micro USB, then plug, it will show as below:

