

AUTOMATIC FRONT LOADING WASHING MACHINE

USER MANUAL

HWM70-1201
HWM80-1401



Haier

TABLE OF CONTENTS**BEFORE USE**

| | |
|---------------------------|----|
| >COMPONENTS..... | 03 |
| >PREPARATION..... | 04 |
| >SAFETY INSTRUCTIONS..... | 05 |
| >INSTALLATION..... | 06 |
| >CONTROL PANEL..... | 08 |

USING THE APPLIANCE

| | |
|--------------------------------------|----|
| >PROGRAM SELECTION..... | 10 |
| >CONSUMPTION AND TECHNICAL DATA..... | 11 |
| >WASHING METHODS..... | 12 |
| >CLEANING & CARE..... | 16 |

MAINTENANCE

| | |
|----------------------------------|----|
| >DISPLAY CODES..... | 18 |
| >TROUBLESHOOTING..... | 19 |
| >IMPORTANTSAFETYINFORMATION..... | 20 |

LEGEND

For your safety, any instructions in this manual with this "Warning" sign must be followed strictly.

IMPORTANT DISPOSAL INSTRUCTIONS

As a responsible manufacturer we care about the environment. As such we urge you to follow the correct disposal procedure for your product and packaging materials.

This will help conserve natural resources and ensure that it is recycled in a manner that protects health and the environment.

You must dispose of this product and its packaging according to local laws and regulations. Because this product contains electronic components, the product and its accessories must be disposed of separately from household waste when the product reaches its end of life.

Contact your local authority to learn about disposal and recycling. The product and packaging should be taken to your local collection point for recycling. We apologise for any inconvenience caused by minor inconsistencies in these instructions, which may occur as a result of product improvement and development.

COMPONENTS

THANKS FOR PURCHASING A HAIER PRODUCT

Please read these instructions carefully before using this appliance. The instructions contain important information which will help you get the best out of the appliance and ensure safe and proper installation, use and maintenance.

Keep this manual in a convenient place so you can always refer to it for the safe and proper use of the appliance.

If you sell the appliance, give it away, or leave it behind when you move house, make sure you also pass on this manual so that the new owner can become familiar with the appliance and safety warnings.

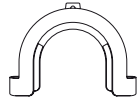
ACCESSORIES

Check the accessories and literature in accordance with this list:

1x Inlet hose assembly



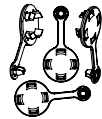
1x Drain hose bracket



1x User manual



4x Blanking plugs



1x Warranty card



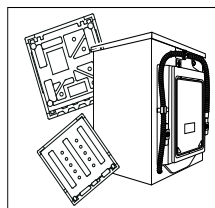
PREPARATION

PREPARING THE MACHINE

Remove all the packing materials prior to use, including the polystyrene base. Upon opening the package, water drops may be seen on the plastic bag and the porthole. This is normal phenomenon resulting from water tests in the factory.

DESCRIPTION

This diagram may differ slightly from the layout of the washing machine you have just purchased due to technical improvements.



Control panel

Door handle

Work top

Start/Pause

Washer door

Detergent/Softener drawer

Filter cover



Drain hose

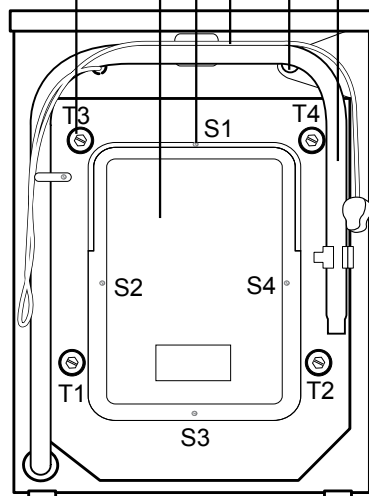
Water inlet valve

Power cord

Back cover screws

Back cover

Transportation bolts





SAFETY INSTRUCTIONS

BEFORE SWITCHING THE APPLIANCE ON FOR THE FIRST TIME

DO ...

- ... Make sure that the transport bolts are removed.
- ... Use a separate earthed socket for the power supply.
- ... Make sure that the plug is accessible.
- ... Hold the plug and not the electric cable when unplugging the power supply.
- ... Make sure that the fuses in the power circuit are rated for 15A.
- ... Keep away from heat sources and direct sun light to prevent plastic and rubber components from aging.
- ... Make sure that the power cord is not caught under or in the appliance and avoid damage to the power cable.
- ... Check that hose joints and connections are firm and no water can leak. If joints are loose or there is leakage, turn off the water supply and refix. Do not use the washing machine until the hoses are properly fixed.

DURING DAILY USE OF THE APPLIANCE

DO ...

- ... Pull up zips and fix loose threads to prevent the items from being entangled. If necessary, put small items into a laundry bag to avoid damage.
- ... Turn off the machine after each wash program and switch it off at the mains to save electricity and for safety. Wipe clean the lower part of the porthole.
- ... Keep the door slightly open when the washing machine is not in use to prevent formation of odours.
- ... The power cord must be replaced by the manufacturer, service agent or qualified persons, if it is damaged.
- ... Ensure that the appliance is not used by persons with reduced physical, sensory or mental capabilities, lack of experience and knowledge without supervision or instruction by a person responsible for their safety.
- ... Supervise children to ensure that they do not play with the appliance.

DO NOT ...

- ... Touch or use the appliance when barefoot or with wet or damp hands or feet.
- ... Use flammable detergent or dry cleaning agent.
- ... Use any flammable sprays in close vicinity to the appliance.
- ... Remove or insert the plug in the presence of flammable gas.
- ... Allow children or infirm persons to play with the appliance or packing materials.
- ... Install the appliance outdoors in a damp place, or in an area which may be prone to water leaks such as under or near a sink unit. In the event of a water leak allow the machine to dry naturally.
- ... Place the washing machine directly on a carpet, or close to a wall or furniture.

DO NOT ...

- ... Touch the washer door during the washing process - it gets hot!
- ... Place heavy objects or sources of heat or damp on top of the appliance.
- ... Hot wash foam rubber or sponge-like materials.
- ... Open the detergent distribution drawer during the wash cycle.
- ... Force the washer door open. The door is fitted with a self-lock device and will open shortly after the washing procedure is ended.
- ... Open the washer door if the water level is visibly over the porthole.
- ... Cover the washing machine with a cover that may keep dampness in.

INSTALLATION**REMOVING THE TRANSPORTATION BOLTS**

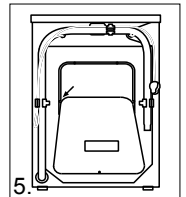
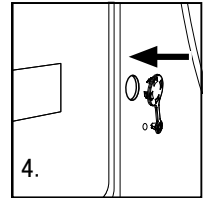
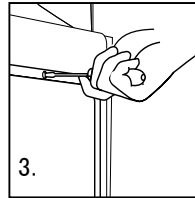
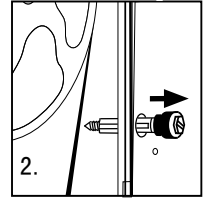
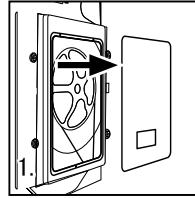
The transportation bolts are designed for clamping anti-vibration components inside of the washing machine during the transportation process.

1. Remove the back cover.
2. Remove the four bolts on the rear side and take out the synthetic stabilisers from within the machine.
3. Replace the back cover.
4. Fill the holes left by the bolts with blanking plugs.

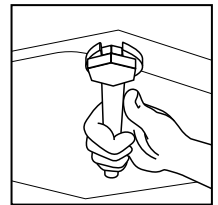
Note:

1. When replacing the back cover, ensure convex surface is facing outwards, and insert the back cover between the gap as shown in Fig. 5.

2. Keep the transportation bolts and synthetic stabilisers in a safe place for later use.

**ADJUSTING THE WASHING MACHINE**

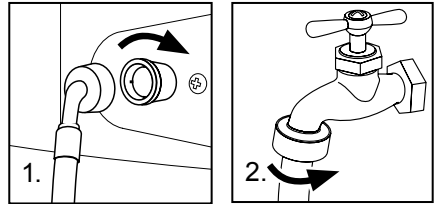
There are adjustable feet under the bottom of the washing machine. Before use, they should be adjusted so that the machine is level. This will minimise vibrations and thus noise during use. It will also reduce wear and tear. We recommend using a spirit level to level the appliance. The floor should be as stable and flat as possible.



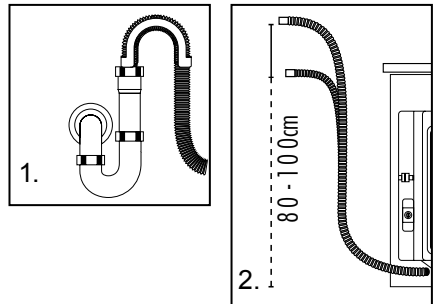
INLET HOSE

1. Connect the nut on the inlet hose to the connector on the water valve.
2. Connect inlet hose to a water tap with cold, fresh water.

Note: Use the hose-set supplied with the appliance. Old hose-sets should not be reused.

**DRAIN HOSE**

1. Use the drain hose bracket to keep the end of the drain hose retained and prevent the outflow of water. Don't extend the length of the drain hose; if an extended hose is required, please consult a service agent.
2. The height of the drainage outlet must be 80-100 cm. Fix the drain hose to the clip at the back of the washing machine to prevent it from dropping off.

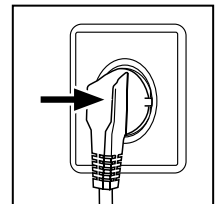


Note: The drain hose should not be submerged in water and should be securely fixed and leak-free. If the drain hose is placed on the ground or if the pipe is at a height of less than 80cm, the washing machine will continuously drain while being filled (self-siphoning).

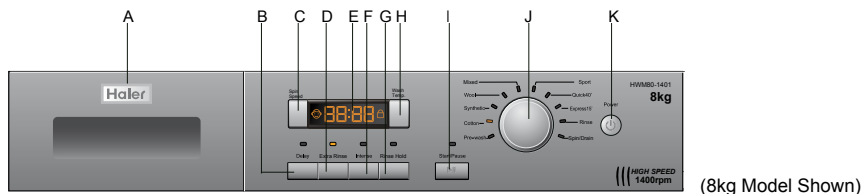
CONNECTING TO THE POWER SUPPLY

Before connecting to the power supply, check:

- The socket is adequate for the maximum power of the washing machine (For safety, fuses in the power circuit should be rated for no less than 15A).
- The supplied voltage should match the requirements of this appliance.
- The power outlet should be capable of accepting the washing machine plug.
- Connect the machine to an earthed socket outlet.



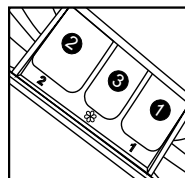
CONTROL PANEL



- | | | | |
|----------|---------------------------|----------|--------------------|
| A | Detergent/Softener Drawer | G | Rinse Hold |
| B | Delay | H | Wash Temp |
| C | Spin Speed | I | Start/Pause Button |
| D | Extra Rinse | J | Program Dial |
| E | LED Display | K | Power Button |
| F | Intense button | | |

OPERATIONAL FUNCTIONS

- A** –Detergent distribution drawer
 __Open the drawer, three compartments can be seen:
 Compartment 1: Prewash detergent
 Compartment 2: Detergent for programs 1 to 8.
 Compartment 3: Softener, conditioning agent.



- B** –Delay
 __Touch this button lightly, the washing machine will start operation after a period of time and the corresponding indicator will go on. The range is 0.5-24 hours; each touch of this button increases half an hour. After the button is set, press the Start/Pause button to start countdown of the set time (the time is displayed on the screen until the program ends).
Note: The delay time must be longer than the program time otherwise the washing machine will start the wash program directly.

- C** –Spin Speed
 __Touch this button lightly to select the desired speed. When a speed is set, it will be displayed on the display screen.
Note: Different water temperatures and spinning speeds can be set for different laundries. Wash using the default settings if there is no special requirement.

–Control panel lock function:

Press the "Delay" and the "Start/Pause" buttons simultaneously for 3 seconds after starting a program. Button Functions and wash cycle will be unable to be changed. To unlock press the "Delay" and "Start/Pause" buttons again for 3 seconds.

| | | |
|---|---------------------|--|
| D | -Extra Rinse | <p>_ Press this button, the washing machine will perform additional rinses. Press the button once to select one additional rinse. The display will show "P-1". Press the button repeatedly and the screen will display "P-2" or "P-3", indicating two or three additional selected rinses. The "extra rinse light" is activated and flashes during the performance. "P-1/2/3" is displayed alternating with the remaining time. The light turns off and the display disappears when the extra rinse ends.</p> <p>Note: Select this function when program 1-9 is selected.</p> |
| E | -LED Display | <p>_ Information as remaining wash time and error messages will be shown here.</p> <p>Note: After a wash program is started the display will go on and the remaining wash time decreases. As the water pressure and temperature may differ, the remaining time may be adjusted accordingly. When the laundry is not balanced during spinning, the time may be automatically prolonged.</p> |
| F | -Intense button | <p>_ If the laundry is heavily soiled, press this button before starting the program. When the button is pressed, the washing time increases.</p> |
| G | -Rinse hold | <p>_ Touch this button lightly, the indicator will go on. When the washing machine is at the last rinsing operation, it will not drain but to start a soaking cycle. If you want to spin the laundry, press this button or the "start/pause" button again, the indicator will go off and operation will resume.</p> <p>Note: Select this function when "Pre-wash, Cotton, Synthetic, Mixed, Sport" Programmes are selected.</p> |
| H | -Wash Temp | <p>_ Touch this button lightly, the washing temperature will be displayed on the display screen. Select a temperature according to the type of laundry.</p> |
| I | -Start/Pause Button | <p>_ When the washing machine is connected to the power socket and a program is selected, lightly touch this button to start operation. During a wash cycle, touch it lightly, operation will stop and the digits on the screen start blinking. Touch it again to resume operation. To cancel a wash program during a wash cycle, touch this button, when the digits on the screen start blinking, press the Power switch, the program will be cancelled.</p> |
| J | -Program Dial | <p>_ By turning the knob clockwise/counterclockwise, the required program can be selected. There are 10 programs available. After a program is selected, the corresponding light will go on.</p> |
| K | -Power Button | <p>_ Press this button to switch on the washing machine. Press it again to switch it off. Press this button gently for 2 seconds to switch off the machine as buttons are soft touch sensitive.</p> |

-To cancel a program

Press the "Start/Pause" button, then switch off the power and the program is automatically cancelled. Turn the Turn on the power and use the program selector again to choose another program.

-To cancel audible alarm

Alarm sound can be cancelled if it is required (not recommended)

Switch on the washing machine and turn the program knob to spin cycle, then press the "Delay" and "Extra rinse" button, hold on for 3 seconds.

The message "BEEP OFF" will be displayed on the screen, indicating that the alarm sound has been cancelled.

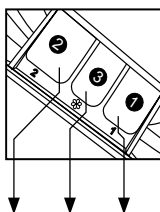
-To reinstate audible alarm

Switch on the washing machine and turn the program knob to spin cycle, then press the "Delay" and "Extra rinse" button, hold on for 3 seconds.

The "BEEP ON" message will be displayed on the screen, indicating that the alarm sound has been reinstated.

PROGRAM SELECTION

PROGRAM MODES



- 1 Detergent compartment for prewash mode
- 2 Detergent compartment
- 3 Compartment for softener

| Program | Maximum | Preset | 2 | 3 | 1 | LaundryType | HWM70-1201 Preset spin Speed | HWM80-1401 Preset spin Speed |
|-----------------|-------------|--------|-------------------------------------|-------------------------------------|-------------------------------------|---|---------------------------------|---------------------------------|
| 1 → Pre-wash | -- to 90 °C | 40°C | <input checked="" type="checkbox"/> | <input type="checkbox"/> | <input checked="" type="checkbox"/> | Heavy soiling | 1000rpm | 1000rpm |
| 2 → Cotton | -- to 90 °C | 60°C | <input checked="" type="checkbox"/> | <input type="checkbox"/> | <input checked="" type="checkbox"/> | Cotton fabrics | 1200rpm | 1400rpm |
| 3 → Synthetic | -- to 60 °C | 40°C | <input checked="" type="checkbox"/> | <input type="checkbox"/> | <input checked="" type="checkbox"/> | Cotton or synthetic | 1000rpm | 1000rpm |
| 4 → Wool | -- to 40 °C | --°C | <input checked="" type="checkbox"/> | <input type="checkbox"/> | <input checked="" type="checkbox"/> | Woolen fabrics | 600rpm | 600rpm |
| 5 → Mixed | -- to 60 °C | 30°C | <input checked="" type="checkbox"/> | <input type="checkbox"/> | <input checked="" type="checkbox"/> | Different materials | 1000rpm | 1000rpm |
| 6 → Sport | -- to 40 °C | 30°C | <input checked="" type="checkbox"/> | <input type="checkbox"/> | <input checked="" type="checkbox"/> | Sports wear | 1000rpm | 1000rpm |
| 7 → Quick 40' | -- to 40 °C | --°C | <input checked="" type="checkbox"/> | <input type="checkbox"/> | <input checked="" type="checkbox"/> | Slight-soil cotton, linen and synthetic fabrics | 1000rpm | 1000rpm |
| 8 → Express15' | -- to 30 °C | --°C | <input checked="" type="checkbox"/> | <input type="checkbox"/> | <input checked="" type="checkbox"/> | Fast colour synthetic | 800rpm | 800rpm |
| 9 → Rinse | -- | --°C | <input checked="" type="checkbox"/> | <input type="checkbox"/> | <input checked="" type="checkbox"/> | / | 1000rpm | 1000rpm |
| 10 → Spin/Drain | -- | --°C | <input checked="" type="checkbox"/> | <input checked="" type="checkbox"/> | <input checked="" type="checkbox"/> | / | 1000rpm | 1000rpm |

Yes No Optional

Energy Label Default Program Settings:

HWM70-1201

HWM80-1401

- Cotton 60°C
- Intense
- 1200rpm

- Cotton 60°C
- Intense
- 1400rpm

CONSUMPTION AND TECHNICAL DATA

CONSUMPTION TABLE

This washing machine is for domestic use only.

If the machine is used for commercial purposes the warranty will be void. Do not use for purposes other than that for which it was designed. Follow the instructions given on the label of each garment and wash only machine-washable garments.

| HWM70-1201 | | | | HWM80-1401 | | | |
|--------------|-----------|-------------|--------------|--------------|-----------|-------------|--------------|
| PROGRAM | MAX. LOAD | TEMPERATURE | WASHING TIME | PROGRAM | MAX. LOAD | TEMPERATURE | WASHING TIME |
| → Pre-wash | 7kg | 40°C | 1:46 | → Pre-wash | 8kg | 40°C | 1:46 |
| → Cotton | 7kg | 60°C | 3:35 | → Cotton | 8kg | 60°C | 3:15 |
| → Synthetic | 4kg | 40°C | 1:10 | → Synthetic | 4kg | 40°C | 1:10 |
| → Wool | 2kg | --°C | 0:50 | → Wool | 2kg | --°C | 0:50 |
| → Mixed | 4kg | 30°C | 1:10 | → Mixed | 4kg | 30°C | 1:10 |
| → Sport | 4kg | 30°C | 1:25 | → Sport | 4kg | 30°C | 1:25 |
| → Quick40' | 2kg | --°C | 0:40 | → Quick40' | 2kg | --°C | 0:40 |
| → Express15' | 2kg | --°C | 0:15 | → Express15' | 2kg | --°C | 0:15 |

TECHNICAL DATA

| | HWM70-1201 | HWM80-1401 |
|--------------------------|------------------|------------------|
| Power source | 220 - 240V~/50Hz | 220 - 240V~/50Hz |
| Max. working current (A) | 10 | 10 |
| Water pressure (MPa) | 0.03≤P≤1 | 0.03≤P≤1 |
| Nominal load (kg) | 7 | 8 |
| Spinning speed (r/min) | 1200 | 1400 |
| Washing programs | 10 | 10 |
| Max power (W) | 2100 | 2100 |
| Dimensions (HxDxW mm) | 850 x 600 x 595 | 850 x 650 x 595 |
| Net weight (kg) | 71 | 72 |

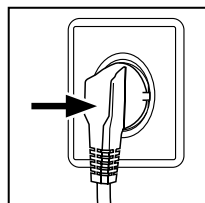
WASHING METHODS

This washing machine is for domestic use only.

If the machine is used for commercial purposes the warranty will be void. Do not use for purposes other than that for which it was designed. Follow the instructions given on the label of each garment and wash only machine-washable garments.

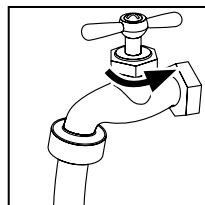
**POWER SUPPLY**

Connect the washing machine to the power supply (220V to 240V~/50Hz).

**WATER CONNECTION**

Connect the hose to the cold water connection. Turn on the tap. The water must be clean and clear.

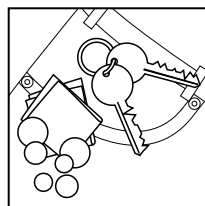
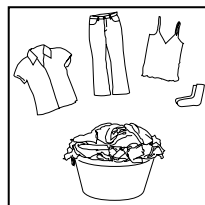
Note: Before use, check for leakage in the joints between the tap and the inlet hose by turning on the tap.

**PREPARING THE LAUNDRY**

- Sort out clothes according to fabric (cotton, synthetics, wool or silk) and to how dirty they are.
- Separate white clothes from coloured ones. Wash them first by hand to check if they fade or run.
- Empty pockets (keys, coins, etc.) and remove the harder decorative objects (e.g. brooches).

Attention: Small parts (like buttons, etc), or sharp (zips & buckles) items may cause damage to the machine.

- Garments without hems, underwear, finely woven textile such as fine curtains are to be put into wash bag (it is better not to wash them in a washing machine).
- Close zippers and hooks, make sure the buttons are sewn on tightly and place small items such as socks, belts, bras, etc. in the wash bag.
- Unfold large pieces of fabric such as bed sheets, bedspreads, etc.
- Turn shirts inside out.



LOADING THE MACHINE

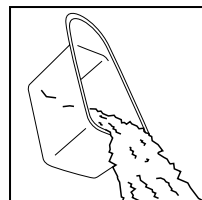
- When first using the washing machine, let it run unloaded for one program to prevent the laundry from being tainted by oil or dirty water from the washing machine. Before washing you should run the machine without laundry, but with detergent, with 60°C program.
- Open the washer door, put in laundry piece by piece. Close the door tightly.
- Do not overload the washing machine.



SELECTING DETERGENT

The washing efficiency and the performance is determined by the quality of detergent used. Special non-foaming detergent produces good washing results. Use specific detergents for synthetic and woollen goods. Do not use dry cleaning agents such as trichloroethylene and similar products.

Note: Detergent should be mixed with warm water. Do not add more detergent than needed. Please follow the usage recommendation on the detergent package.

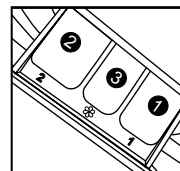


ADDING DETERGENT

Slide out the detergent drawer and put the required detergent and softening agent into the corresponding compartments. Push back the drawer gently. (Refer to the instructions on the drawer)

Caution:

- **For pre-wash program, detergent should be added to both compartments 1 and 2. For other programs, do not add detergent to compartment 1.**
- **Use liquid detergent according to the instructions on its package. Do not use liquid detergent if the Prewash mode or "Delay" is selected.**
- **Do not overuse softener as it may damage artificial fibres.**



SELECTING WASH PROGRAM

To get the best washing results, an appropriate washing program should be selected according to the laundry type. Please turn the program knob to select the right program.

SELECTING ADDITIONAL FUNCTIONS

Select the additional wash options as required. (Refer to the "Control panel", B,D,F,G pages 08 and 09)

SETTING WASHING TEMPERATURE

Press and hold down the temperature button until the desired temperature is selected .



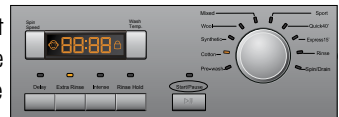
SETTING SPIN SPEED

Press and hold down the "Spin Speed" (C) button until the desired speed is selected. See "Operational functions" on the "Control Panel" pages (08 and 09) for selecting temperature and spin speed. Set to the value recommended by garment care instructions/preprogrammed settings.



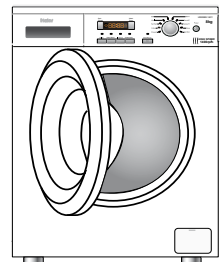
WASHING

Press the Start/Pause button. The washing machine will operate according to the preset programs. The washing machine will stop operation automatically when a washing cycle ends. The "End" sign will appear on the display. Open the washer door and take out the laundry.



AFTER WASHING






























Turn off the water supply and unplug the power cord. Open the washer door to prevent formation of moisture and odours. Let the door open while not used.



TIPS FOR SAVING ENERGY

1. Collect clothes for one full wash load.
2. Avoid overloading the washing machine.
3. Prewash only heavily soiled clothes.
4. Reduce the amount of detergent or choose Express 15' or Quick wash programs for slightly soiled clothes.
5. Choose the correct washing temperature. Most modern detergents can wash with good results in temperatures lower than 60°C. Only use higher temperatures for heavily soiled laundry.
6. Follow the usage recommendation on the detergent package to avoid using too much detergent.

CARE CHART

| | | | | | | |
|---|---|---|---|---|---|--------------------------|
|  | Resistant material |  | Bleachable in cold water |  | Don't dry clean | |
|  | Delicate fabric |  | Do not bleach |  | Dry flat | |
|  |  | Washable at 95 °C |  | Iron at 200 °C |  | Hung to dry |
|  |  | Washable at 60 °C |  | Iron at 150 °C |  | Dry on clothes hanger |
|  |  | Washable at 40 °C |  | Iron at 100 °C |  | Tumble dry, normal heat |
|  |  | Washable at 30 °C |  | Don't iron |  | Tumble dry, reduced heat |
|  | Hand wash |  | Dry cleaning with any solvent |  | Don't tumble dry | |
|  | Dry clean only |  | Dry cleaning with pericloride | | | |
|  | Wool Seal |  | Dry cleaning with aviation fuel | | | |

LOAD REFERENCE

| | | |
|------------------------|-----------------|---------------------|
| Bed sheet (single) | Cotton | Approximately 800g |
| Blanket | Wool | Approximately 3000g |
| Blended fabric clothes | / | Approximately 800g |
| Jackets | Cotton | Approximately 800g |
| Jeans | / | Approximately 800g |
| Overalls | Cotton | Approximately 950g |
| Ladies Pyjamas | / | Approximately 200g |
| Shirts | / | Approximately 300g |
| Socks | Blended fabrics | Approximately 50g |
| T-Shirts | Cotton | Approximately 300g |
| Underwear | Blended fabrics | Approximately 70g |

CLEANING & CARE**AFTER WASHING**

Turn off the water supply and pull out electricity plug(Fig.1) after each wash. Open the washer door to prevent formation of moisture and odours. If the washing machine is left idle for a long period, turn off water supply (Fig.1b) drain the water in the machine and replace the drain hose.

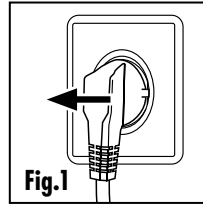


Fig.1

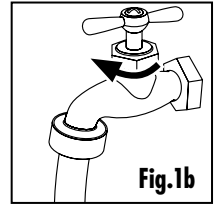


Fig.1b

CLEANING THE DETERGENT DRAWER

Clean the detergent/softener drawer regularly.

REMOVING DETERGENT DRAWER

Slide out draw (in direction shown in Fig.1c) until draw release is visible.

Flush it clean with warm water, dry and then replace it.

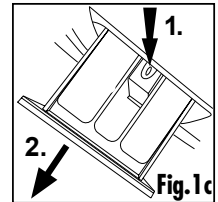


Fig.1c

CLEANING THE MACHINE

Unplug the machine during cleaning and maintenance. Use a soft cloth dampened with soap liquid to clean the machine case and rubber components. Do not use organic chemicals or corrosive solvents.

CLEANING THE FILTER

Caution: Place a container under the drain pump filter, to collect any excess water that may come out of the drain pump when the filter is removed.

Clean the filter once a month:

1. Open the bottom cover (Fig. 2).
2. Remove the filter by turning counterclockwise (Fig. 2b).
3. Flush the filter clean with running water (Fig. 2c).
4. Replace the filter by turning clockwise and remount the cover (Fig. 2d).

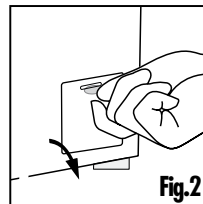


Fig.2

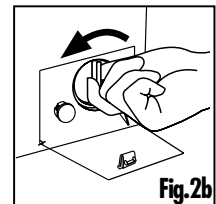


Fig.2b

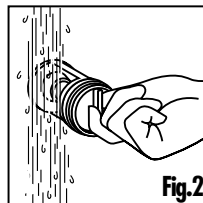


Fig.2c

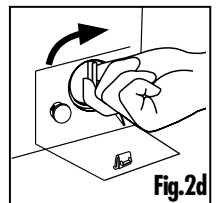
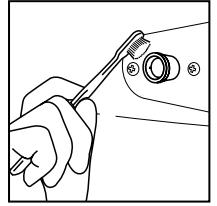


Fig.2d

Caution: The filter must be in place during operation, ensure it is in place after cleaning to avoid leakage.

WATER INLET VALVE AND INLET VALVE FILTER

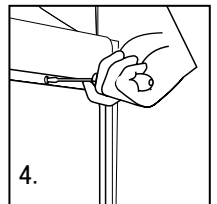
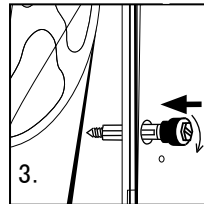
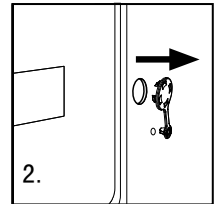
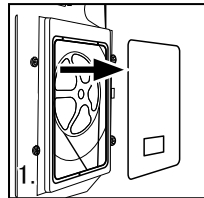
To prevent blockage to the water supply by ingress of foreign substances, clean the water inlet valve and inlet valve filter regularly.



MOVING THE MACHINE

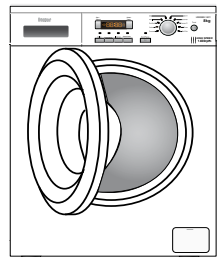
If the machine is to be moved to a distant location, replace the transportation bolts removed before installation to prevent damage as shown below.

1. Remove the back cover.
2. Remove the blanking plugs.
3. Insert the synthetic stabilisers and the transportation bolts.
4. Tighten the bolts with a spanner.
5. Replace the back cover.



LONG PERIODS WITHOUT OPERATION

If the washing machine is left idle for a long period, pull out the electrical plug and turn off the water supply. Open the washer door to prevent formation of moisture and odours. Leave the door ajar while not in use.



DISPLAY CODES

DISPLAY CODES AND SPECIAL FUNCTIONS

| CODES | CAUSES | SOLUTIONS |
|-------|--|--|
| Err1 | → Door is not properly shut. | _ Shut the door properly. |
| Err2 | → Drainage error, water not emptied within 6 minutes. | _ Clean the filter and check the drain hose for blockage. If error still exists, please contact the maintenance personnel. |
| Err3 | → Temperature sensor not properly connected or damaged. | _ Contact the maintenance personnel. |
| Err4 | → Heater error (Appears at the end of a cycle). | _ Reduce load and then start washing again. If problem still exists, please contact the maintenance personnel. |
| Err5 | →Water level not met in 8 minutes. →The height of the drain hose is below 80 cm. → The drain hose is in water. | _ Make sure that tap is turned on, and water pressure is normal. If problem still exists, please contact the maintenance personnel. _ Install drain hose within 80-100 cm of height. _ Make sure the drain hose is not in water. |
| Err6 | → Motor error. | _ Contact the maintenance personnel. |
| Err7 | → Motor error. | _ Contact the maintenance personnel. |
| Err8 | → Water exceeds protective level. | _ Contact the maintenance personnel. |
| End | → End of wash cycle. | |
| 1:25 | →The remaining time is 1 hour 25 minutes. | |
| 19:25 | →Status information:Preset time for delayed operation. | |
| UNb | After the last rinsing cycle finishes,spinning fails completely due to unbalance of the laundry. | |

→ Power-off memory function: In case of abrupt power failure or the need to cut off the power during a program cycle, the present settings will be saved and the preset operation will resume when the power is on again.

TROUBLESHOOTING

TROUBLESHOOTING

The following circumstances do not mean there is a fault with the appliance. Contact the Customer Care Team when you have confirmed the problem after following the instructions below.

| PROBLEM | CAUSES | SOLUTIONS |
|--|---|--|
| Washing machine fails to operate. | <ul style="list-style-type: none"> → Poor connection to the power supply. → Power failure. → The washer door is not properly closed. → Machine has not been switched on. | <ul style="list-style-type: none"> _ Check connection to the power supply. _ Check the power supply. _ Close the washer door properly. _ Make sure the machine is switched on. |
| Washing machine cannot be filled with water. | <ul style="list-style-type: none"> → The "Start/Pause" button is not pressed. → Water tap is not turned on. → Water pressure is less than 0,03 MPa. → The inlet hose is kinked. → Water supply failure. → The program knob is not properly set. → The washer door is not properly closed. → The inlet hose filter is blocked. | <ul style="list-style-type: none"> _ press the "Start/Pause" button. _ Turn on the water tap. _ Check water pressure. _ Check the inlet hose. _ Ensure the water supply. _ Set the program knob properly. _ Close the washer door properly. _ Unblock the inlet hose filter. |
| Machine is draining while being filled. | <ul style="list-style-type: none"> → The height of the drain hose is below 80 cm. → The drain hose is in water. | <ul style="list-style-type: none"> _ Install drain hose within 80-100 cm of height. _ Make sure the drain hose is not in water. |
| Drainage failure. | <ul style="list-style-type: none"> → Drain hose is blocked. → Drain hose end is higher than 100 cm above the floor level. → The filter is blocked. | <ul style="list-style-type: none"> _ Unblock the drain hose. _ Make sure the drain hose end is lower than 100 cm above floor level. _ Unblock the filter. |
| Strong vibration while spinning. | <ul style="list-style-type: none"> → Not all transportation bolts have been removed. → Washing machine is located on an uneven surface or is not level. → Machine load is over 7kg(8kg). | <ul style="list-style-type: none"> _ Remove all transportation bolts. _ Make sure the washing machine is on an even surface and levelled. _ Reduce amount of laundry in the drum. |
| Operation stops before completing wash cycle. | <ul style="list-style-type: none"> → Water or electricity failure. | <ul style="list-style-type: none"> _ Check the power supply or water supply. |
| Operation stops for a period of time. | <ul style="list-style-type: none"> → Washing machine gives an error message. → Washing machine is in soaking cycle? | <ul style="list-style-type: none"> _ Check display codes. _ Press the rinse hold button or the Start/pause button again to cancel it. |
| Excessive foam in the drum, which is spilled to the distribution drawer. | <ul style="list-style-type: none"> → The detergent is not a low-foaming type or for manual wash. → Excessive use of detergent. | <ul style="list-style-type: none"> _ Check if your detergent is appropriate. _ Reduce amount of detergent in the distribution drawer. |
| Automatic adjustment of the washing time. | <ul style="list-style-type: none"> → The washing program duration will be adjusted | <ul style="list-style-type: none"> _ This is normal and doesn't affect the functionality. |
| Spinning fails | <ul style="list-style-type: none"> → Unbalance of the laundry | <ul style="list-style-type: none"> _ Add clothes or run a spinning program again. |

Do not use a multiple socket extension cord. A separate earthed socket is required which shall be accessible at all times. If the mains cord becomes damaged, it must be replaced by the manufacturer, its service agent or similarly qualified person with a lead of the same type and rating to avoid a hazard.

Never remove the plug from the socket by pulling on the cord, always grasp the plug.

The door may get hot during use, do not touch it and keep children away whilst the machine is operating.

Never open the detergent drawer while the machine is running. Hot water and detergent might be ejected.

When installing the product, make sure the mains cord is not trapped or twisted.

WARNINGS:

THIS APPLIANCE IS INTENDED FOR DOMESTIC USE ONLY, COMMERCIAL OR ANY OTHER USE MAY INVALIDATE THE WARRANTY AND MIGHT BE DANGEROUS.

Never touch or operate the machine with wet hands or when bare footed.

Do not put the machine on a carpet that can block the ventilation slots on the bottom of the unit.

Do not install this machine outdoors or in a damp place or expose it to rain.

Do not install this product near a heat source or in direct sunlight.

Do not place any object on the machine when it is operating.

This appliance must be earthed.

If you are disposing of an old appliance, disable the door lock to avoid entrapment of children when playing and cut off the mains cord close to the machine.

The appliance must be connected to a 220-240 volts 50 cycle AC supply by means of a three pin socket, suitably earthed and the outlet should be protected by a 15 amp fuse.

WATER CONNECTION

The product should be connected to the water main using new hose sets, old hose sets should not be re used.

The water pressure must not be less than 0.03MPa.

Connect to the water main using a standard 3/4 inch threaded tap outlet.