

Guide to Add Reolink Cameras to Google Home

Preparation

To add your Reolink cameras to Google Home, you need to have the following devices and Apps set up:

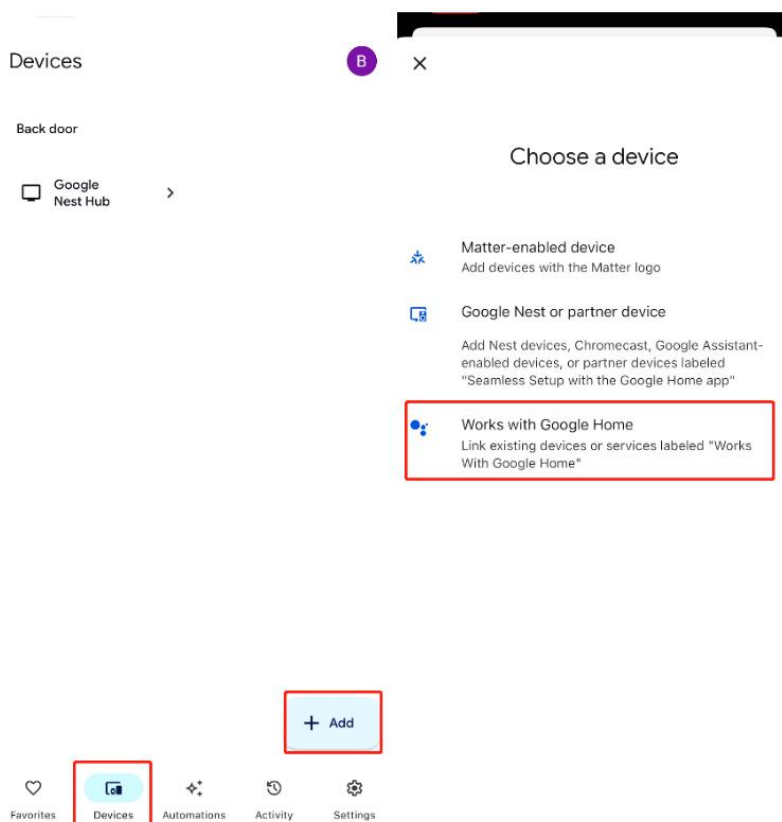
- **Reolink App and Google Home App**
- **Reolink camera that supports Smart Home**
- **Google Device: A TV with Chromecast/A media player with Chromecast/A Google Home Hub/A Google Nest**

Add Reolink Cameras to Google Home with Reolink App 4.52 and Later

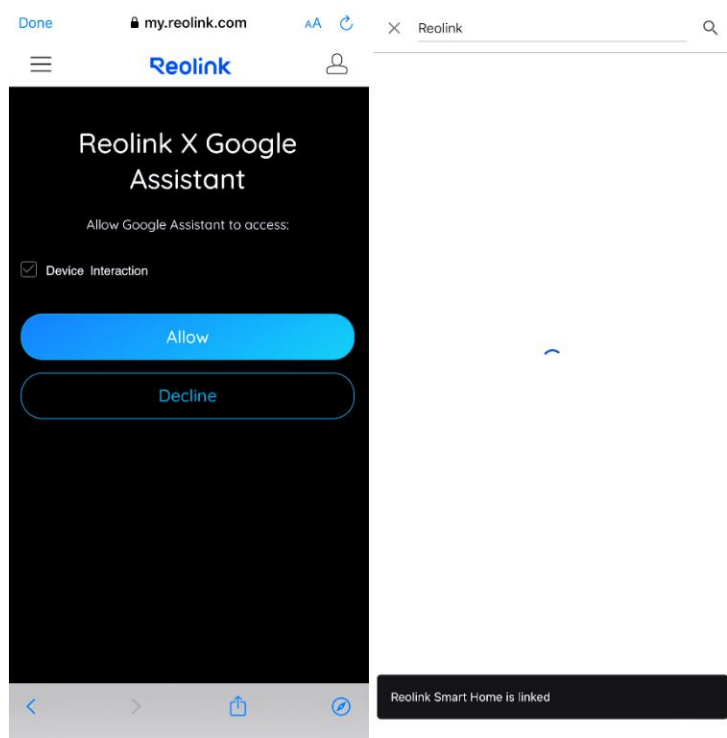
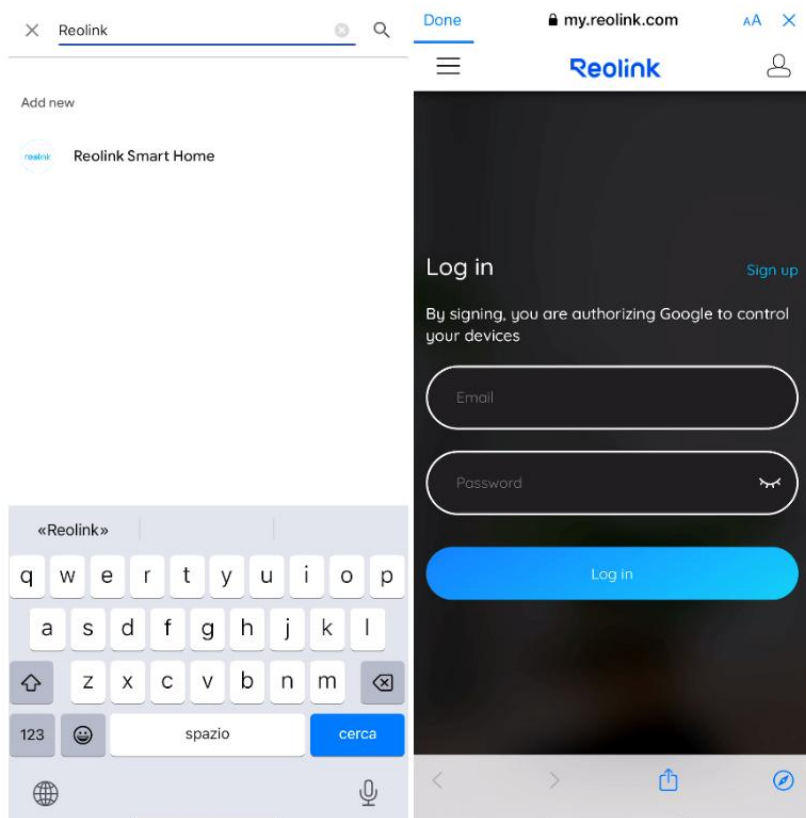
The Reolink App version 4.52 has optimized the process of adding your cameras to Google Home. We recommend upgrading to version 4.52 or later for a smoother setup experience.

Step 1. Link Reolink to Google Home

1. Launch the **Google Home App**, tap **Devices > Add device > Works with Google Home**.



2. Search **Reolink** in the search bar. Tap **Reolink Smart Home** and log in to your Reolink account (**make sure it is the same one that the device is linked to on the Reolink App**). Once you've logged in, tap **Allow** and it will show "**Reolink Smart Home is linked.**"



Step 2. Enable Smart Home Skill on Reolink App

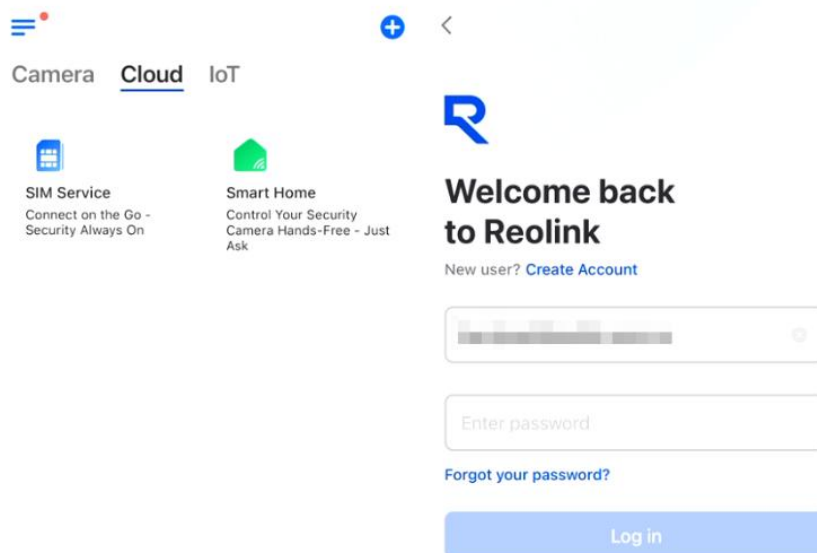
1. Launch the **Reolink App** and add the camera to the Reolink App. If the camera is added to a Reolink Home Hub, please add the Home Hub to the Reolink App.

Note:

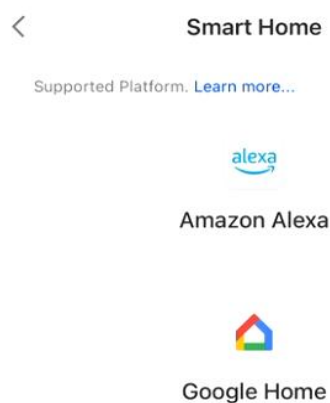
To add a camera to Reolink Smart Home, it is essential to ensure that the camera is connected to the internet. You can check whether the camera can be accessed remotely with an external network to verify its internet connection.

2. Tap **Cloud > Smart Home** section. If you did not log into your Reolink account on the App, you will be asked to log in after you tap the Smart Home section.

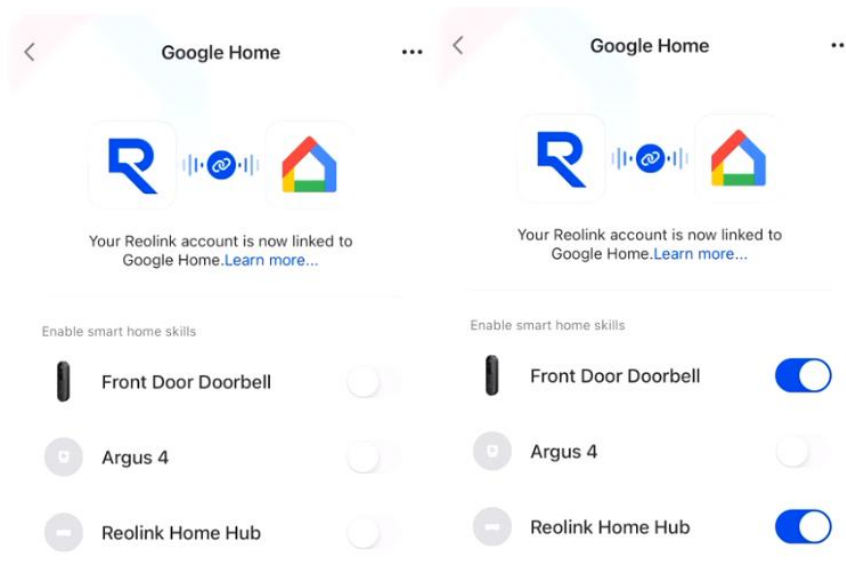
Please **make sure the account is the same as the one that you used on the Google Home App**.



3. Tap **Google Home** on the Smart Home page.



4. The devices that are added to the Reolink App and support Smart Home integration will show up in the list. Find the device you want to add to Google Home. Tap to turn the button blue to enable the smart home skill for that device.



Note:

1. If the camera is linked to Reolink Home Hub/Home Hub Pro, only the hub will be visible, enabling you to add several cameras to Reolink Smart Home at once. Once you enable the hub, it indicates that the smart home function for all cameras added to the hub is activated.

(The cameras shown in the image above are not connected to the Home Hub but are stand-alone cameras already added to the Reolink App and support Smart Home integration.

2. You'd better change the camera name to make your voice command easily recognized via Google. Front Door or Backyard Camera or names like these will be great.

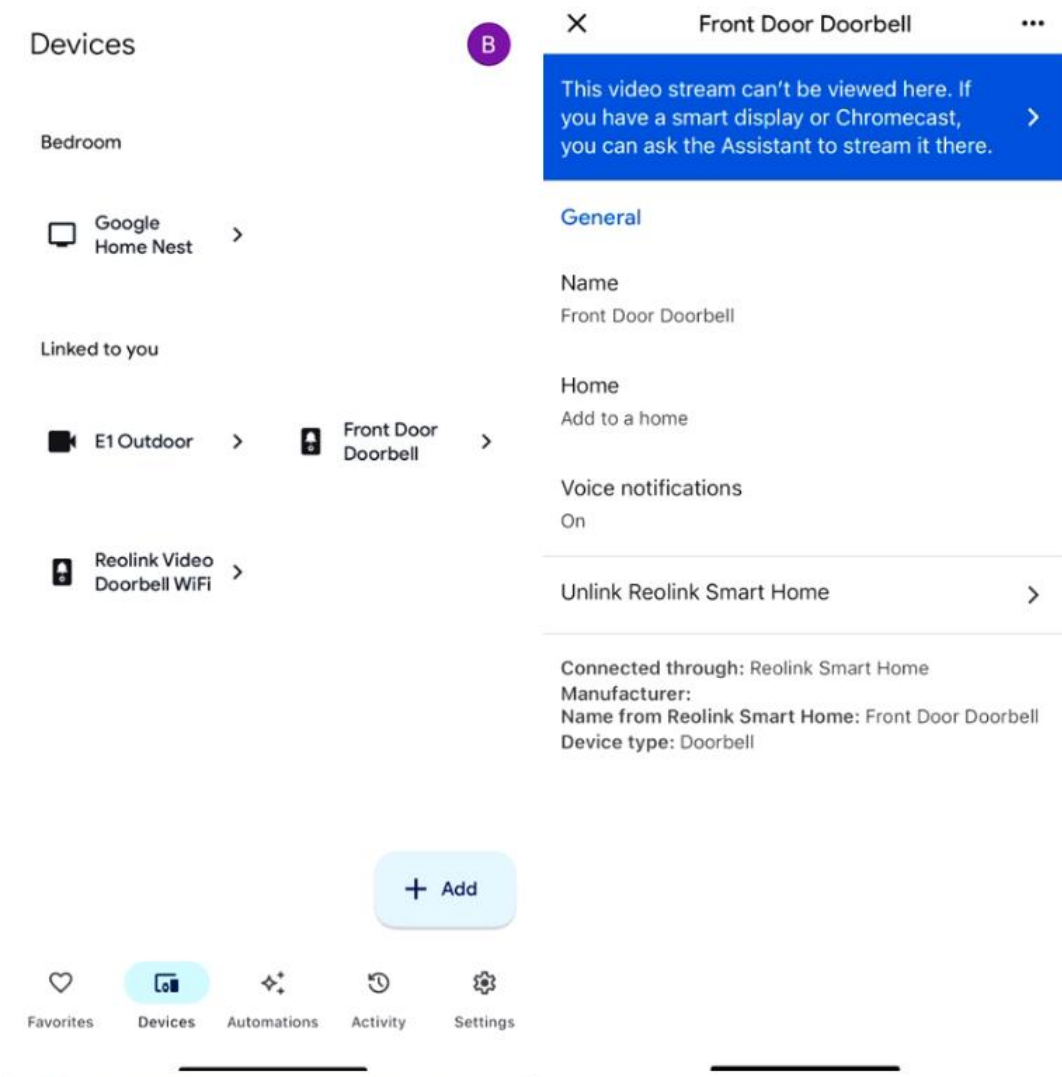
Step 3. Set up Cameras on Google Home App

Now launch the **Google Home App**. The Reolink camera that has enabled the smart home feature in the Reolink App will show up on the Device page. **If the cameras are added to a Reolink Home Hub/ Home Hub Pro**, each device (such as cameras or doorbells) will appear as a separate entity.

To link the camera to your Google Home device, follow these steps:

1. Tap on the camera to access its settings page.
2. Navigate to the **Home** section and assign the camera to a specific home.
3. Tap **Next > Move device**.

4. Choose the appropriate location for the camera, tap **Next**, and you're all set! Your camera is now successfully linked to Google Home and ready to use.



Live View of Reolink Camera on Google Home

- **Live View on Google Device**

If you have already added the Google device (the Chromecast or Google Home Hub, etc.) to the Google Home App, the camera added to the Google Home App will be connected to the Google device automatically, and then you can tap on the screen to find and live view the camera or just say **"Hi Google, show [name of the camera]"** to view the live stream, and say **"Hi Google, stop [name of the camera]"** to stop the live stream.

If you can not call out the camera with the voice command, you may change the camera name and try again. Front Door or Backyard Camera or names like these will be great.

- **Live View on Google Home App**

Tap the camera on the **Device** page of the Google Home App, you can check the live stream or go to the settings page.

Note:

If you see a message **"This video stream can't be viewed here. If you have a smart display or Chromecast, you can ask the Assistant to stream it there"**, it means your camera does not support previewing in the Google Home App. It is recommended to use a Chromecast device or a Google screen device to view the camera.

