

LED PLUG-IN BLACK LIGHT

Model Numbers: 0005-0080



Questions, problems, missing parts?
Before returning to your retailer, call our customer service at
1-844-255-9692 Monday – Friday 8:00 a.m. – 5:00 p.m. CST

PACKAGE CONTENTS

A



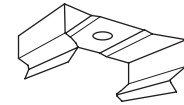
B



C



D



PART	DESCRIPTION	QUANTITY
A	22-7/8 inch LED Plug-in Black Light	1
B	5ft Power cord	1
C	Mounting Screw	2
D	Mounting Clip	2

Note: Hardware not shown to actual size.

SAFETY INFORMATION

WARNING: These products may represent a possible shock or fire hazard if improperly installed or attached in any way. Products should be installed in accordance with these instructions, current electrical codes, and/or the current National Electric Code (NEC). Disconnect power to the unit prior to installation.

WARNING: To reduce risk of fire, electric shock, or injury to persons, be sure that power supply is turned off at fuse box or circuit breaker before attempting installation or servicing of the fixture.

WARNING: Injury to persons and damage to the fixture and/or mounting surface may result if the fixture is pulled from the surface. To reduce the likelihood of such injury or damage, mount to a surface that is mechanically sound.

SAVE THESE INSTRUCTIONS. For safest operation, read and become familiar with complete installation instructions prior to use. Pay close attention to this manual and stay within its guidelines when using this product.

ADDITIONAL SAFETY MEASURES

- Suitable for indoor damp locations only.
- Do not mount near high heat source.
- Each LED black light consumes 9 watts. Do not connect more than 72 watts when linking multiple fixtures.
- To reduce the risk of electrical shock, do not put the unit in water or other liquid. Not for use with aquariums.
- Do not place or store unit where it can fall or be pulled into a tub or sink, nor where it can be exposed to water spray.
- This product has a polarized plug (one blade is wider than the other) as a feature to reduce the risk of electric shock. This plug will fit in a polarized outlet only one way. If the plug does not fit fully into the outlet, reverse the plug. If it still does not fit, contact a qualified electrician.
- Never use with an extension cord unless plug can be fully inserted. Do not alter plug.
- Do not use this fixture with a dimming circuit; however, it can be used with a switched outlet. Per the National Electric Code (NEC), switched wall outlets cannot be used with wall dimmers.
- For cleaning, use a soft dry cloth.



WARNING: PROPOSITION 65

This product can expose you to Lead, which is known to the State of California to cause cancer. For more information go to www.P65Warnings.ca.gov.

PREPARATION

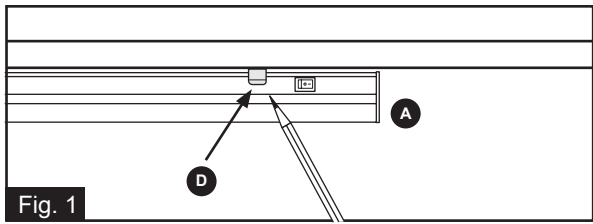
Before beginning assembly, installation, or operation of product, make sure all parts are present. Compare parts with package and hardware contents list on page 1. If any part is missing or damaged, do not attempt to assemble, install or operate the product. Contact customer service for replacement parts.

Tools Required for Assembly (not included): Philips screwdriver and safety glasses.

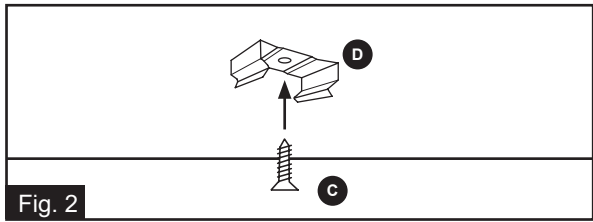
Helpful Tools (not included): Tape measure, pencil, awl/nail

INSTALLATION INSTRUCTIONS - This fixture is suitable for under cabinet mount.

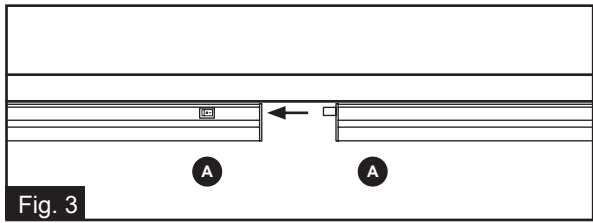
1. Determine and lightly mark location for each mounting clip (D). You can attach the clips to the fixture (A) to use as a guide, but **DO NOT ATTEMPT TO INSTALL THIS FIXTURE WHILE IT IS PLUGGED IN.**



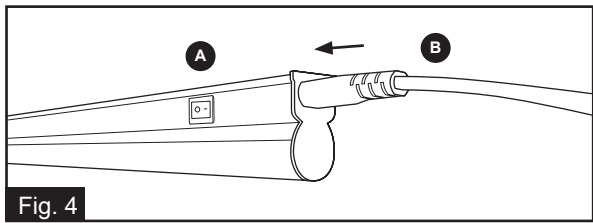
2. Attach each clip (D) to the mounting surface with a short mounting screw (C), using a Phillips screwdriver. An awl or nail head is useful to start the hole.



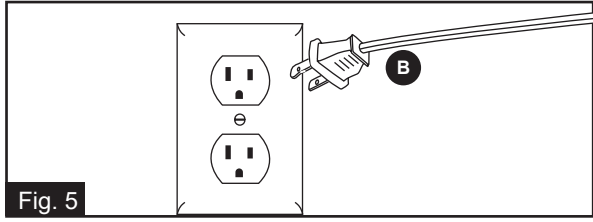
3. If installing multiple fixtures (others not included), repeat steps 1 and 2 for each. Connect multiple fixtures together (up to 8 fixtures maximum) by plugging the two fixtures into each other, directly end-to-end.



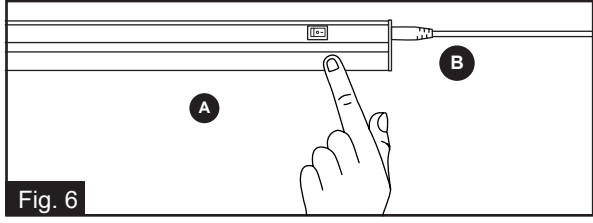
4. Insert the power cord (B) into the end of the fixture that is nearest the on/off switch.



5. Plug power cord (B) into wall receptacle *only after installation is complete.*



6. Use the on/off switch to operate each fixture.



DIMMING INFORMATION

- This product is not suitable for use in dimming circuits.

CARE AND MAINTENANCE

- Use only a mild soap and/or water with a soft cloth to clean the fixture. Harsh chemicals will damage the fixture. Do not wipe the fixture with a rough cloth that may scratch the finish or the lens.
- LEDs are not serviceable. Do not attempt to open or service LEDs or LED housing.

TROUBLESHOOTING

The fixture won't light up:

a) Verify that the circuit breaker is not tripped and that the power cord is fully inserted.

b) Push the "On/Off" switch to "On" position.

When multiple fixtures are connected, some won't light up.:

a) First, unplug the series of fixtures. Then, starting with those nearest to the power cord, push each fixture firmly into the next. Plug in the series and retest. Repeat if necessary.

WARRANTY

This PATRIOT LIGHTING® brand light fixture carries a five (5) Year Limited Warranty to the original purchaser. If, during normal use, this PATRIOT LIGHTING® light fixture fails due to a defect in material and workmanship within five (5) years from the date of purchase, simply bring this light fixture with your original sales receipt back to your nearest MENARDS® retail store. At its discretion, PATRIOT LIGHTING® agrees to have the lighting fixture replaced with the same or similar PATRIOT LIGHTING® product free of charge, within the stated warranty period, when returned by the original purchaser with original sales receipt. Notwithstanding the foregoing, this limited warranty does not cover damage or failure caused by misuse or abuse including but not limited to improper installation, accident, unauthorized repair, maintenance, or modifications of the merchandise. This warranty: (1) excludes expendable parts including but not limited to light bulbs, batteries; (2) carries a 2-year finish warranty protecting finish against tarnishing, flaking, and discoloration; (3) shall be void if this lighting fixture is not installed in the U.S.A; (4) does not cover products installed within three miles of saltwater coastline or any area prone to salt spray; and (5) does not cover any losses, labor, injuries to persons/property or costs. This warranty does give you specific legal rights and you may have other rights, which vary from state to state. Be careful, it is recommended that installation be done by a qualified professional; the purchaser has sole responsibility for proper installation in compliance with all state and local code requirements. Seller's employees are not qualified to advise you on the use of this Merchandise. Any oral representation(s) made will not be binding on seller or its employees. The rights under this limited warranty are to the original purchaser of the Merchandise and may not be transferred to any subsequent owner. This limited warranty is in lieu of all warranties, expressed or implied including warranties or merchantability and fitness for a particular purpose. Seller shall not be liable for any special, incidental, or consequential damages. The sole exclusive remedy against the seller will be for the replacement of any defects as provided herein, as long as the seller is willing or able to replace this product or is willing to refund the purchase price as provided above.

SAVE YOUR RECEIPTS. THIS WARRANTY IS VOID WITHOUT THEM.



Questions, problems, missing parts?

Before returning to your retailer, call our customer service at

1-844-255-9692 Monday – Friday 8:00 a.m. – 5:00 p.m. CST