



Tapo App User Guide

For Tapo Indoor/Outdoor Cameras*

*Features and UI displays may vary from models and app versions.



Contents

About This Guide	1	Privacy Mode	9
Introduction to Tapo App 3.0	2	Playback & Download	9
Set Up Your Camera	3	Camera Settings	10
Main Device Controls	4	Camera Settings	10
Home Page	4	Device Info	10
Home Settings	4	Detection	11
Notifications	5	Alarm	16
Grid View or List View	5	Storage & Recording	16
Remove Your Device	6	Pan & Tilt	17
Share, Favorite/Unfavorite, or Relocate Your Device	6	Video & Display	18
Camera Live View	7	Status LED	22
Live View	7	Spotlight Settings	23
Pan & Tilt	8	Floodlight Settings	24
		Notifications	25

Advanced Settings.....	25	Camera Memory.....	34
Share Device	26	Firmware Update	35
Add to Home	26	Notifications	35
Reboot Camera.....	27	Device Sharing	35
Remove Camera.....	27	Link Tapo with Kasa	36
Cameras Page	28	Widgets	36
Cameras.....	28	Third-Party Services	37
Cloud Activity.....	28		
Home Mode / Away Mode.....	29		
Smart Actions.....	30		
Me Page	33		
Manage Your Account.....	33		
Tapo Care	33		
Playback & Download	34		

About This Guide

This guide provides a brief introduction to the Tapo app and Tapo Indoor Cameras & Tapo Outdoor Cameras.

Please note that features available in Tapo may vary by model and software version. Tapo availability may also vary by region. All images, steps, and descriptions in this guide are only examples and may not reflect your actual experience.

Conventions

In this guide, the following convention is used:

Convention	Description
Blue	Key information appears in blue, including management page text such as menus, items, buttons and so on.
<u>Underline</u>	Hyperlinks are in blue and underlined. You can click to redirect to a website.
📌 Note:	Ignoring this type of note might result in a malfunction or damage to the device.

More Info

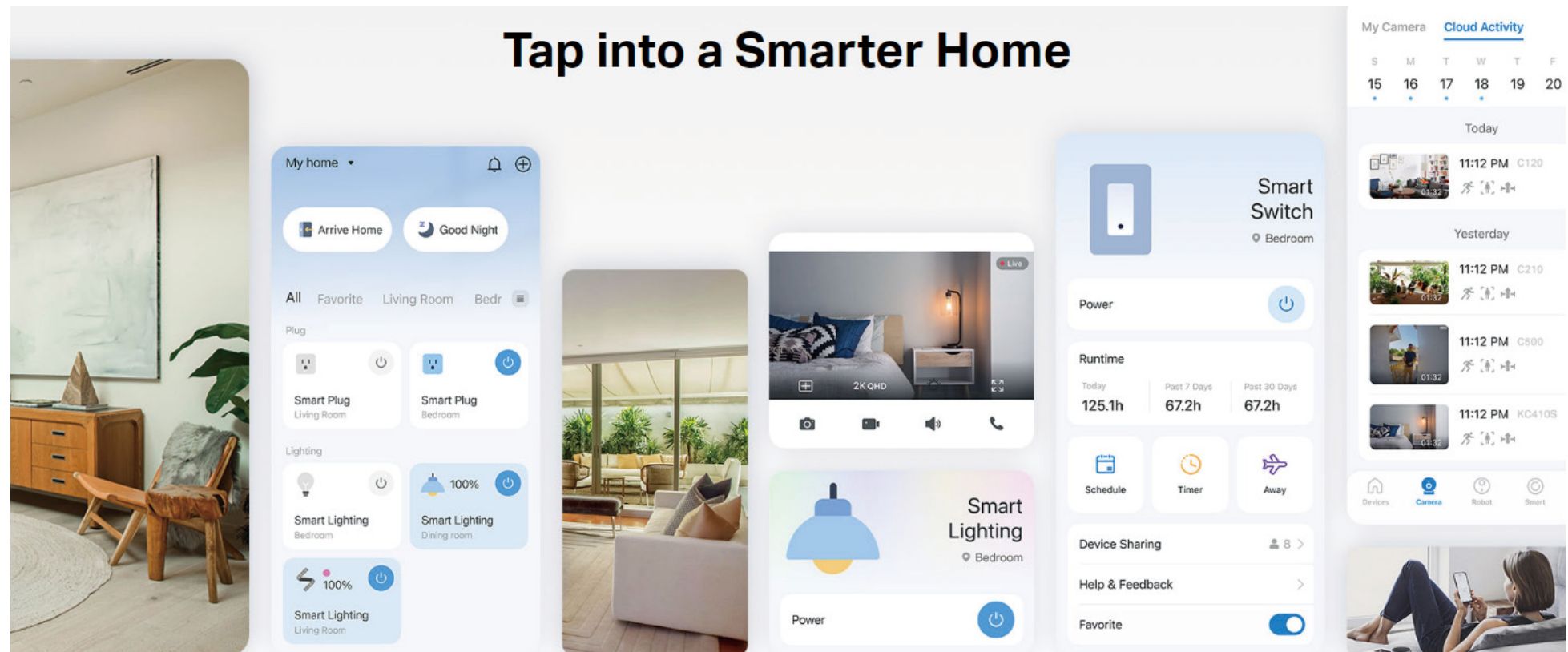
- Specifications can be found on the product page at <https://www.tapo.com>.
- Our Technical Support and troubleshooting information can be found at <https://www.tapo.com/support/>.
- A Technical Community is provided for you to discuss our products at <https://community.tp-link.com>.
- The setup video can be found at <https://www.tp-link.com/support/setup-video/#cloud-cameras>.

Introduction to Tapo App 3.0

Tapo aims to help you live a smarter, easier, and more secure life. In the past few years, we are constantly striving to enhance customer experience and provide the best products and services possible. Marking a significant milestone, we're thrilled to introduce Tapo app 3.0. Dive into its new features!

- **Better Looking** – The brand-new UI brings a fresh experience.
- **More User-Friendly** – Optimized interaction and functions enable easy configuration.
- **More Compatible** – Tapo app 3.0 supports Kasa devices.

Know more about Tapo app 3.0 at <https://www.tp-link.com/landing/tapo-app-v3/>.



Set Up Your Camera

Follow the steps below to get started with your new camera.

Step 1. Download Tapo App

Get the [Tapo](#) app from the App Store or Google Play, or by scanning the QR code below.

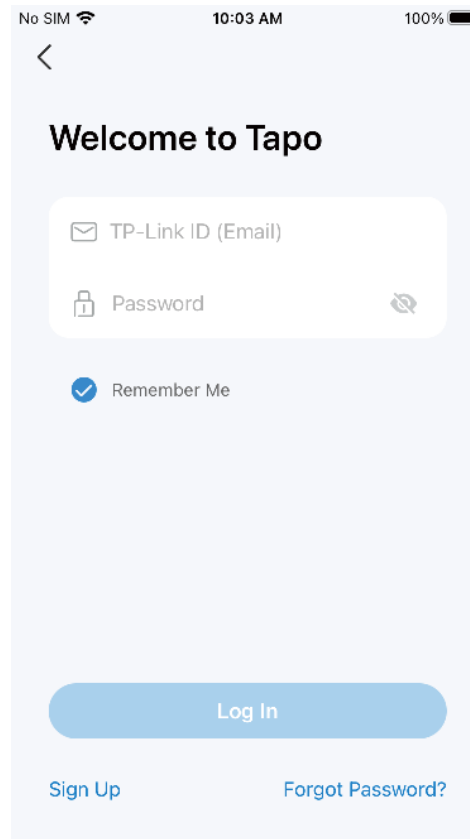


OR



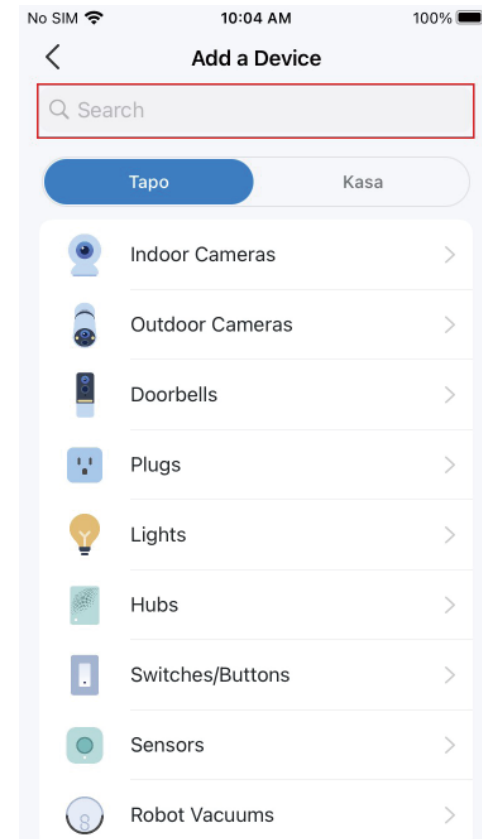
Step 2. Log In

Open the app, and log in with your TP-Link ID. If you don't have an account, create one first.



Step 3. Add Your Camera

Tap the ⊕ button > Add Device in the app and search for your model. Follow the app instructions to complete the setup.

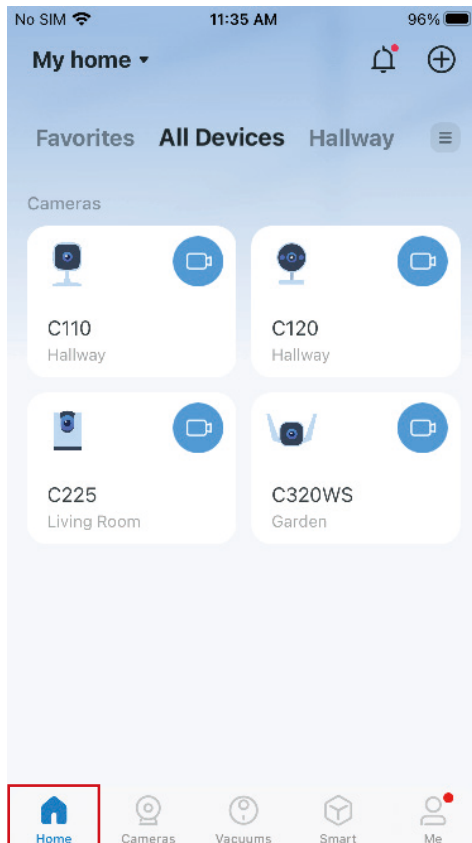


Main Device Controls

After you successfully set up your smart camera, on the home page of Tapo app, you can view and manage all devices that you've added to Tapo.

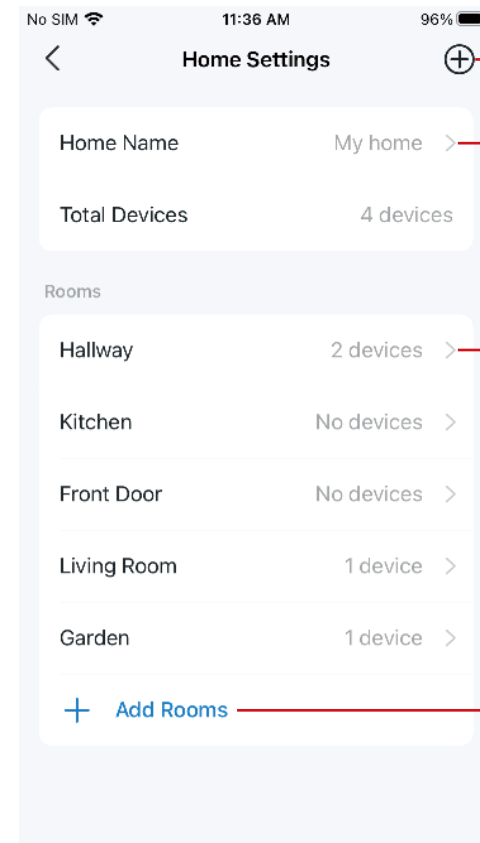
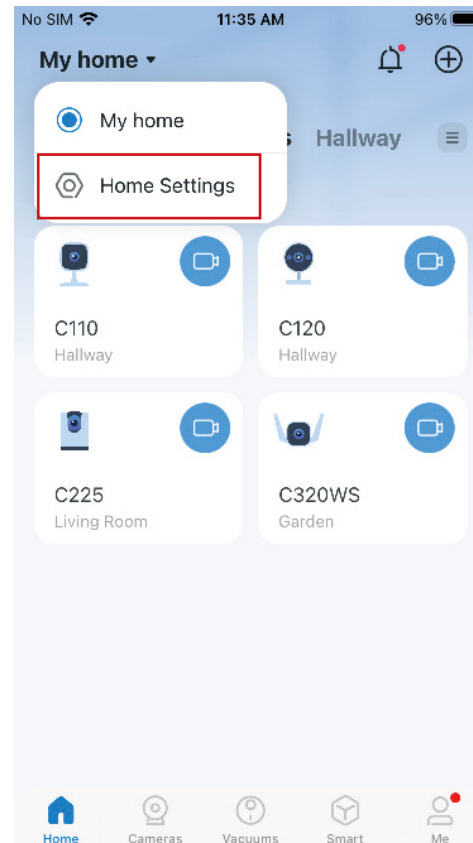
Home Page

You can see all your smart devices listed on the [Home](#) page.



Home Settings

Tap [My home](#), go to [Home Settings](#), and you can edit Home Name and manage devices in different rooms. You can also [Add A Home](#) or [Add Rooms](#).



Tap to add a new home

Tap to edit your home name

Tap to edit this room name, remove/add devices in this room, or delete this room

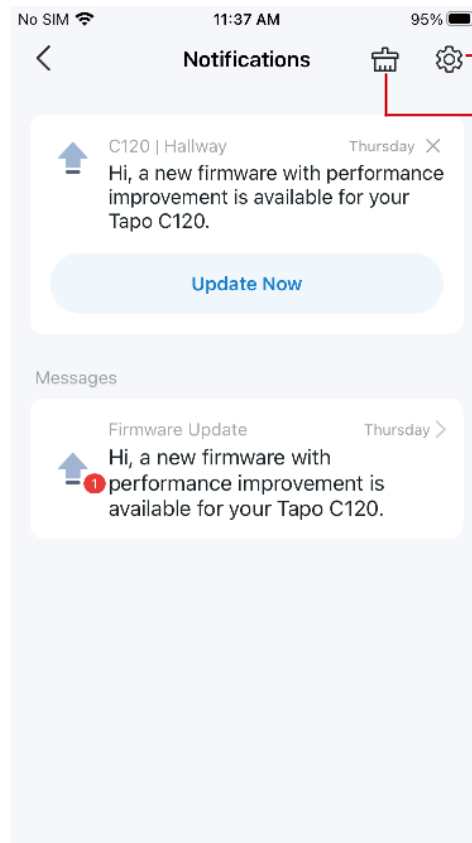
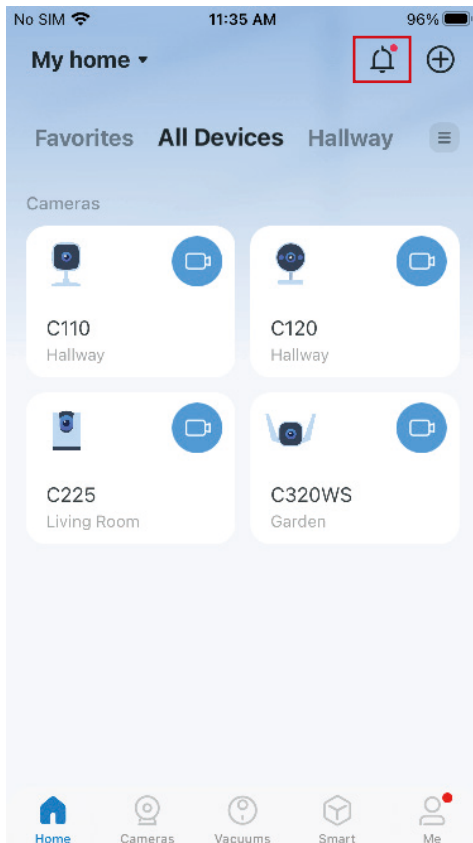
Tap to add rooms in your home

Notifications

Tap the bell icon and you can check all notifications here.

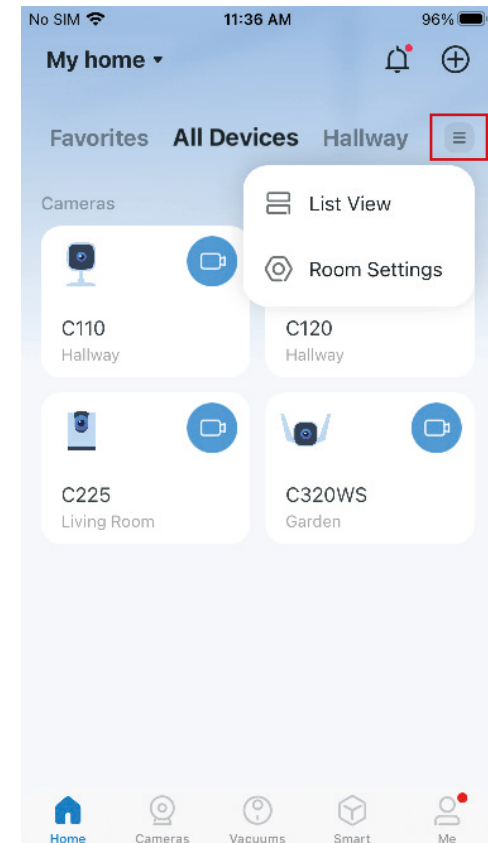
Grid View or List View

Tap the hamburger icon and you can change all devices to list view or grid view.



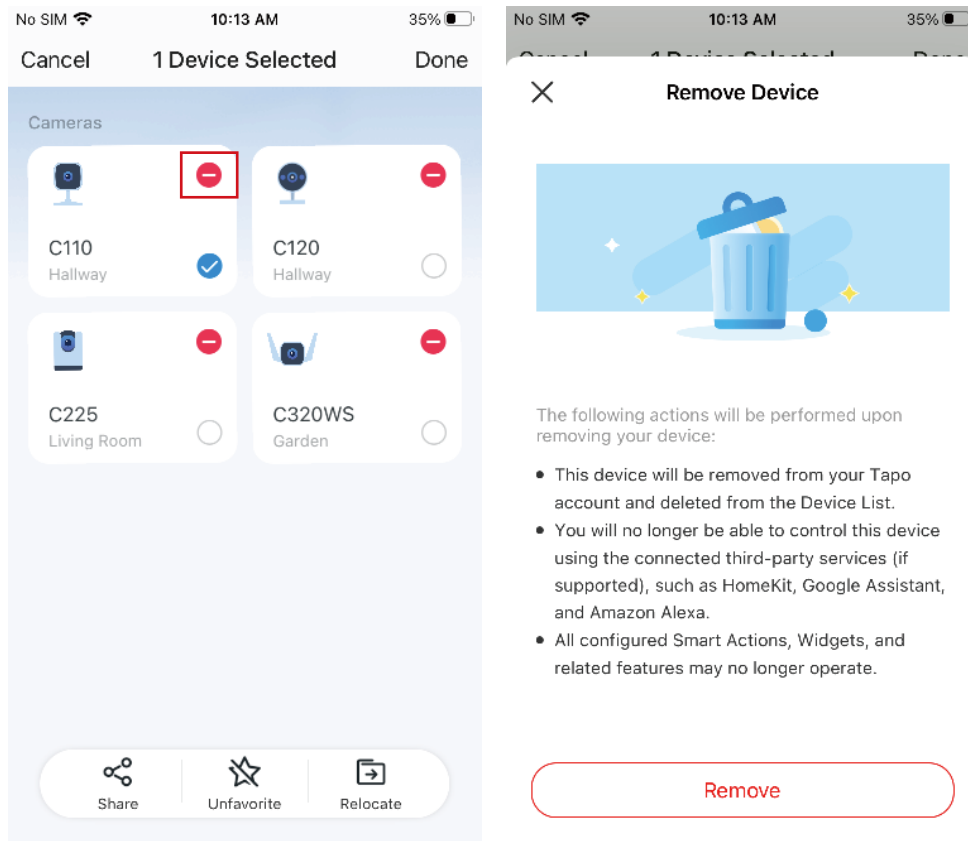
Tap to change notification settings

Tap to mark all messages as read



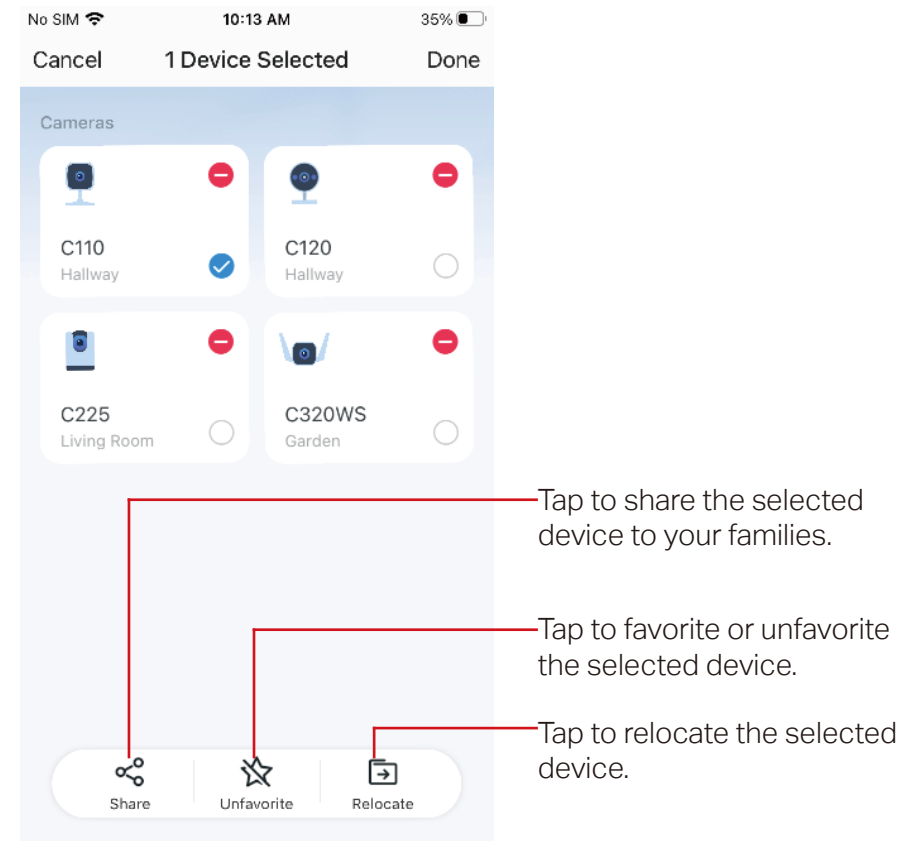
Remove Your Device

Long press the device card and the minus icon appears. Tap the minus icon in the device card to remove this device. Then the removed device will be reset to factory settings.



Share, Favorite/Unfavorite, or Relocate Your Device

Long press the device card and a menu appears on the bottom. You can share, favorite/unfavorite, or relocate the selected devices.



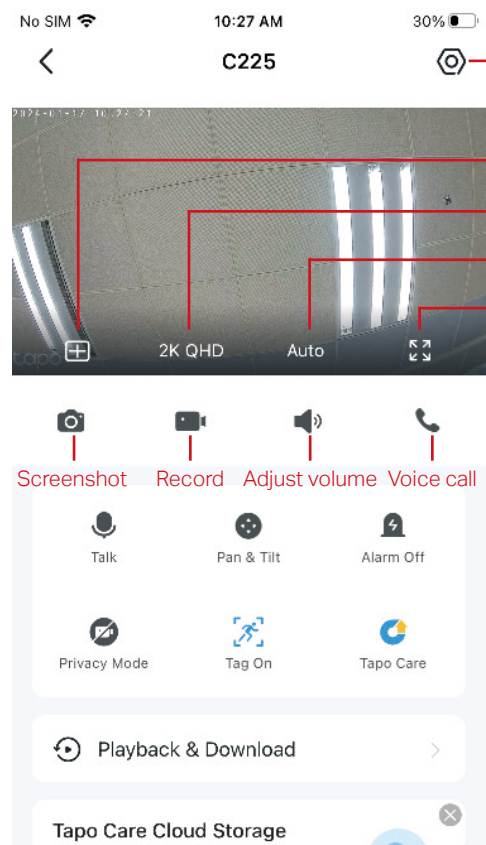
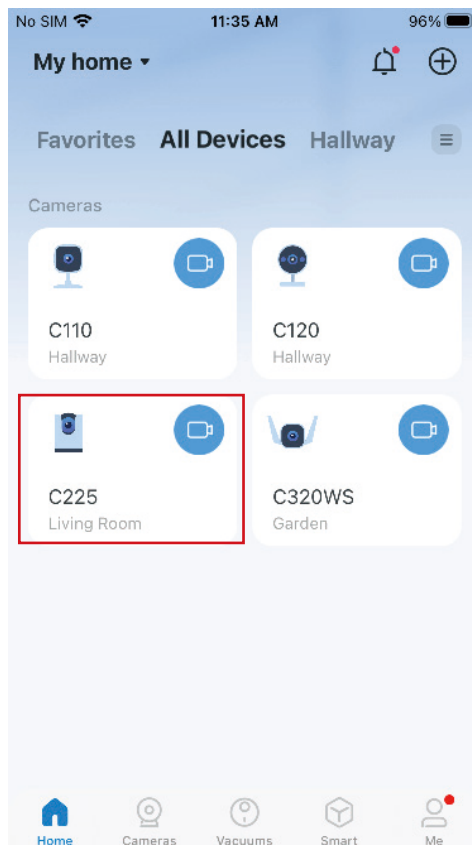
Camera Live View

On the home page of Tapo app, you can tap your smart camera to enter the live view page.

Live View

Here is a brief introduction to icons and features on the camera live view page. The icons on the live screen will appear after you tap the screen once.

■Note: Here we take Tapo C225 V2 as an example. Icons and features on the live view page may vary from different models.



Tap to enter camera settings page.

Multi-Screen: View live videos from multiple cameras at the same time.

Tap to switch the video quality.

Tap to switch the video mode to Day Mode, Night Mode, or Auto.

Full Screen: Tap for a full screen display.

Screenshot: Save captures to Download.

Record: Save recordings to Memory.

Voice Call or Talk: Communicate with loved ones.

Pan & Tilt: Rotate your camera to monitor every angle of your room.

■Note: Only Pan/Tilt cameras have this feature.

Alarm Off: Turn it on to get noticed when motion is detected.

Privacy Mode: Enable to shut down the surveillance for privacy protection.


Tag On: Display the person/pet/vehicle tag on the screen of your camera.

■Note: Only some specific models have this feature.

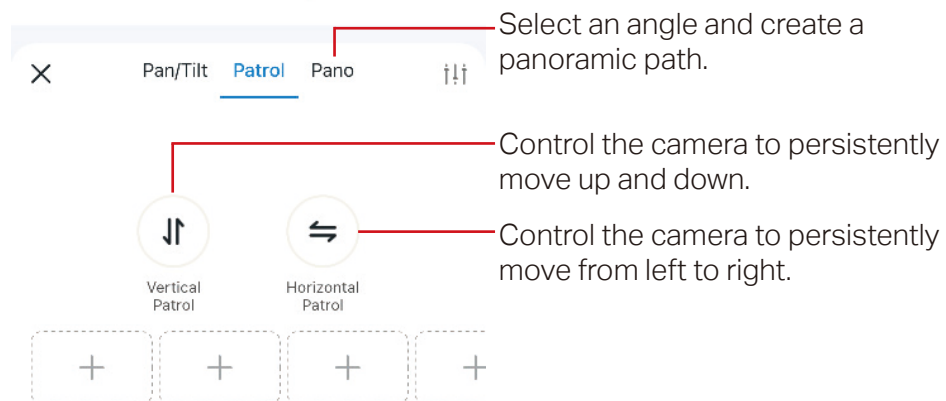
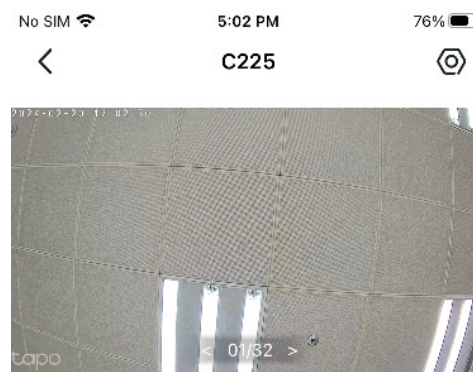
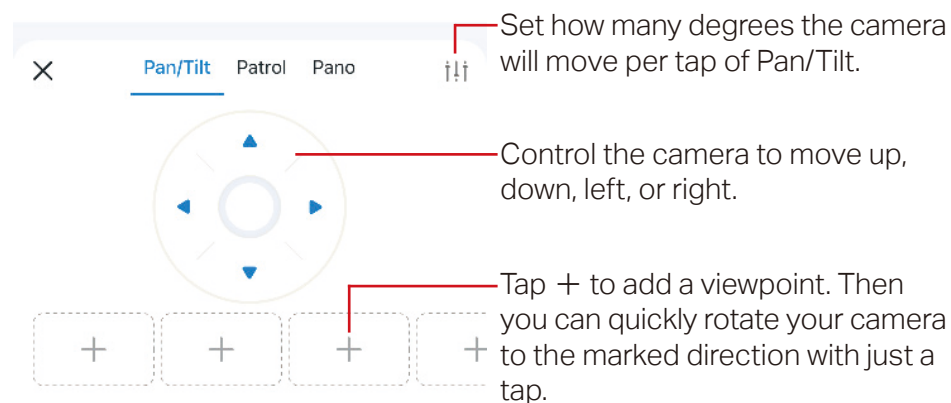
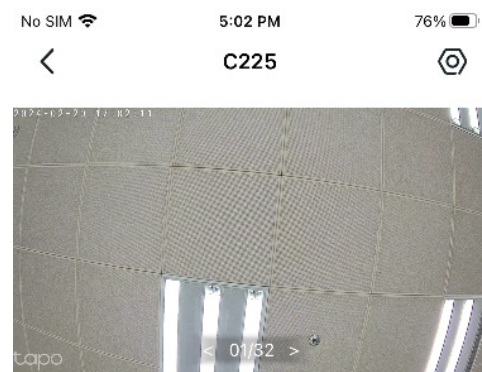
Tapo Care: It is a comprehensive service with unlimited cloud storage.

Playback & Download: Check all recordings and saved moments.


Pan & Tilt

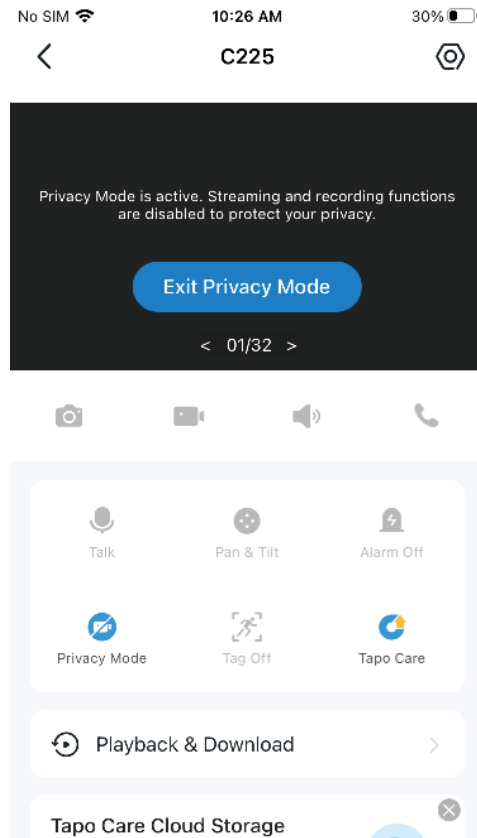
On the live view page, tap  and the control panel appears. Tap on the Pan/Tilt, Patro, or Pano panel to control your camera to move.

Note: Only Pan/Tilt cameras have this feature. Here we take Tapo C225 V2 as an example.



Privacy Mode

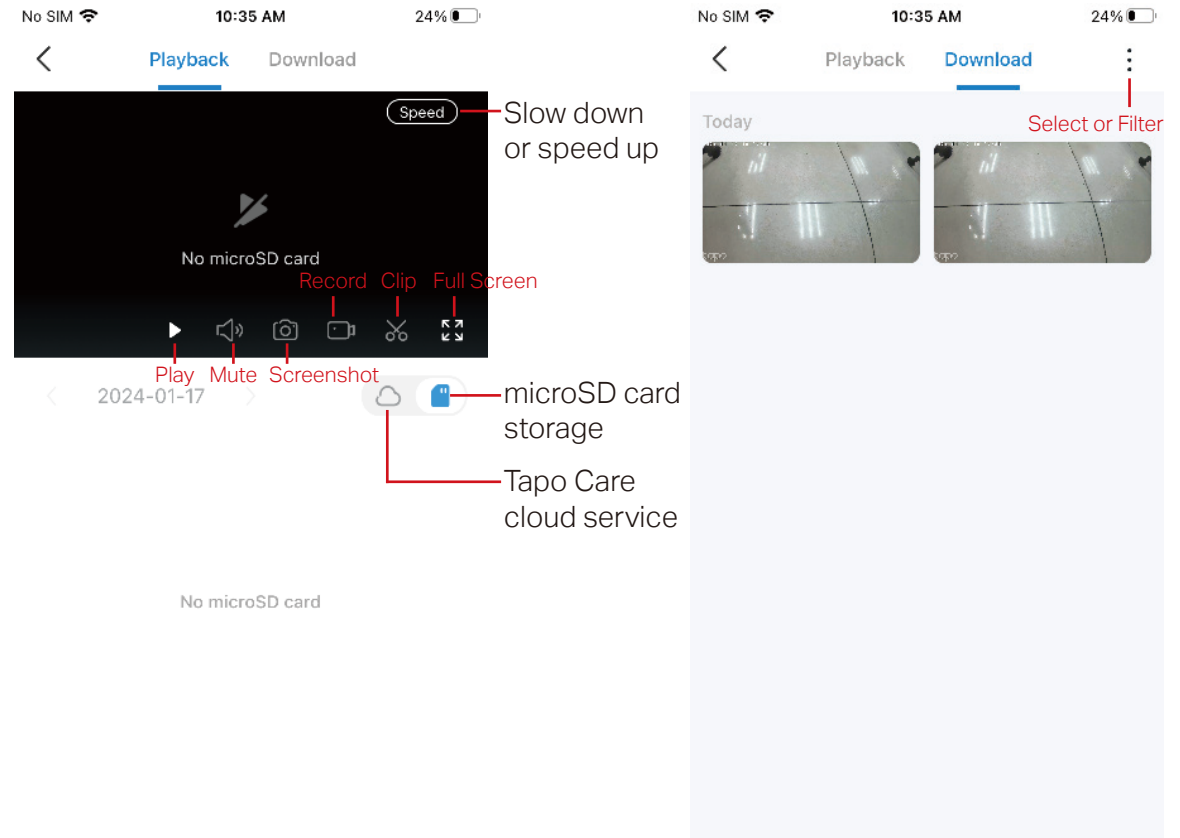
On the live view page, tap  to enable [Privacy Mode](#). When Privacy Mode is active, streaming and recording functions will be disabled to protect your privacy.



Playback & Download

On the live view page, tap [Play & Download](#). You can playback recordings stored in cloud storage or a microSD card. You can also download the photos and videos you take.

■Note: For local recording, insert a microSD card and initialize it on the Tapo app first.



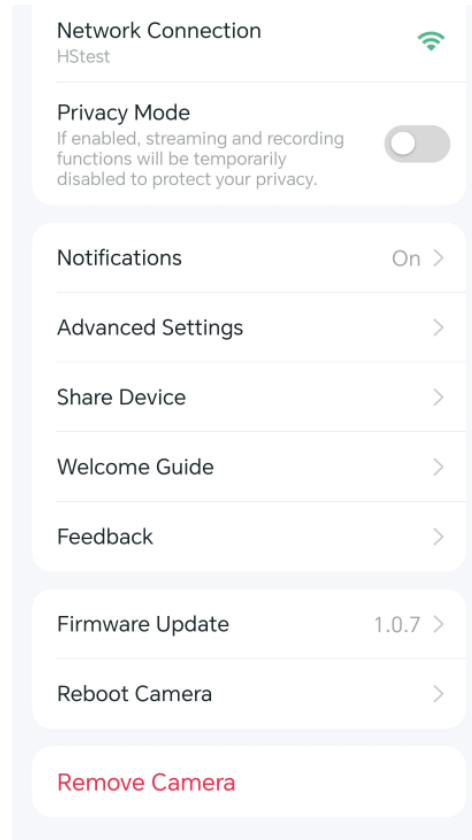
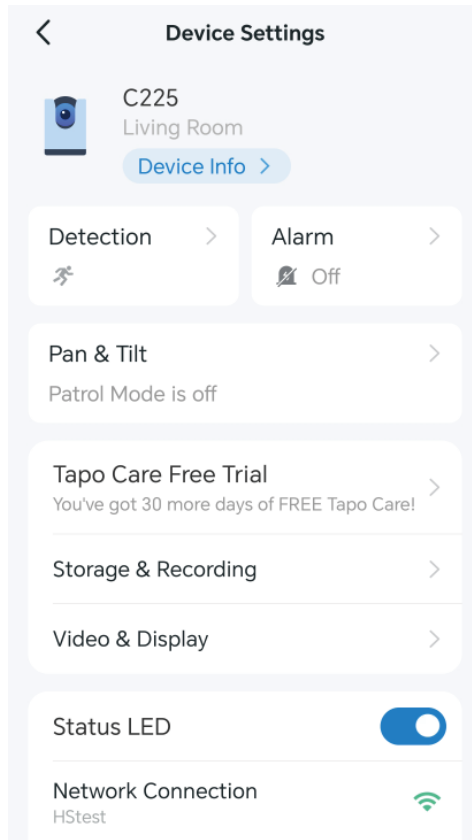
Camera Settings

On the live view page of your Tapo camera, you can tap the gear icon to enter the camera settings page.

Camera Settings

You can tap any card and change the settings to meet your various needs.

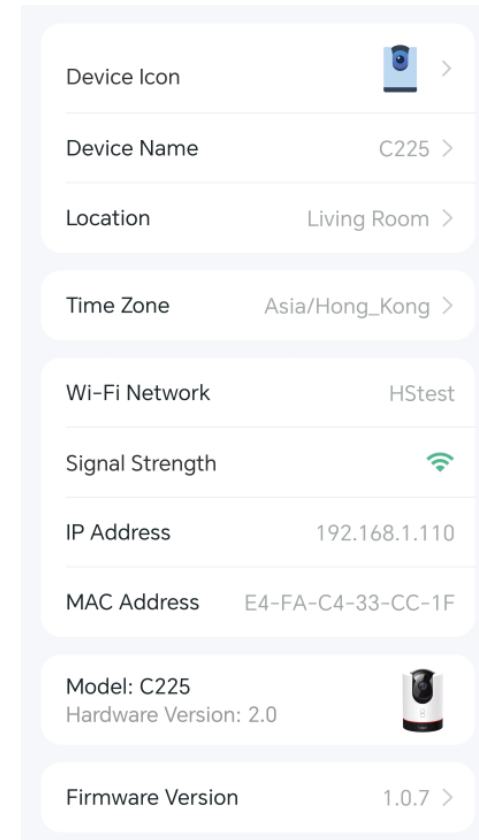
■Note: Here we take Tapo C225 V2 as an example. Features on the settings page may vary from different models.



Device Info

You can change the device icon, name, location, and time zone. Also you can check the basic information of your camera.

■Note: Here we take Tapo C225 V2 as an example.

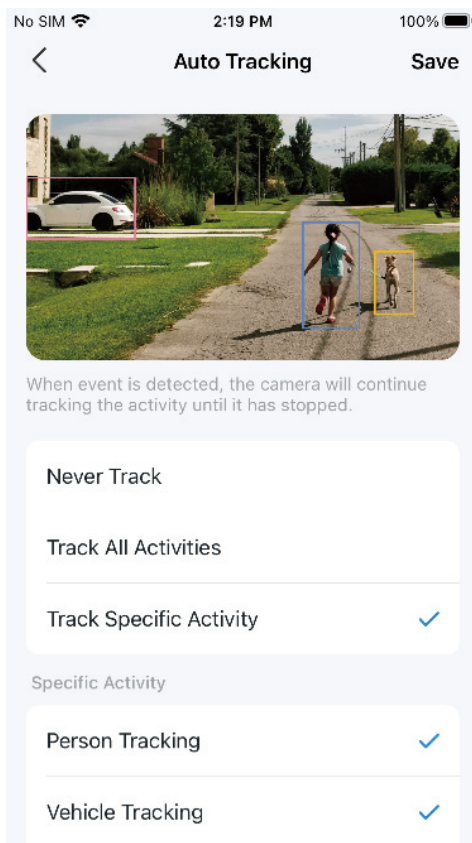


Detection

Note: Here we take Tapo C225 V2 as an example. Features on the detection page may vary from different models.

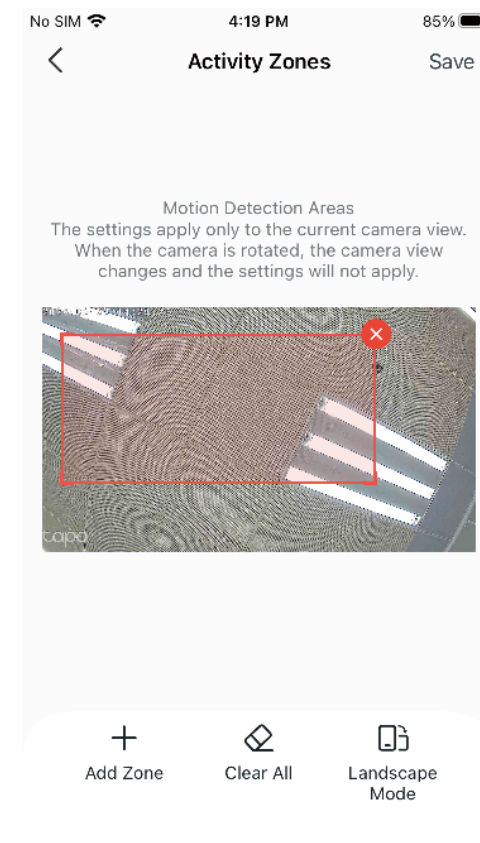
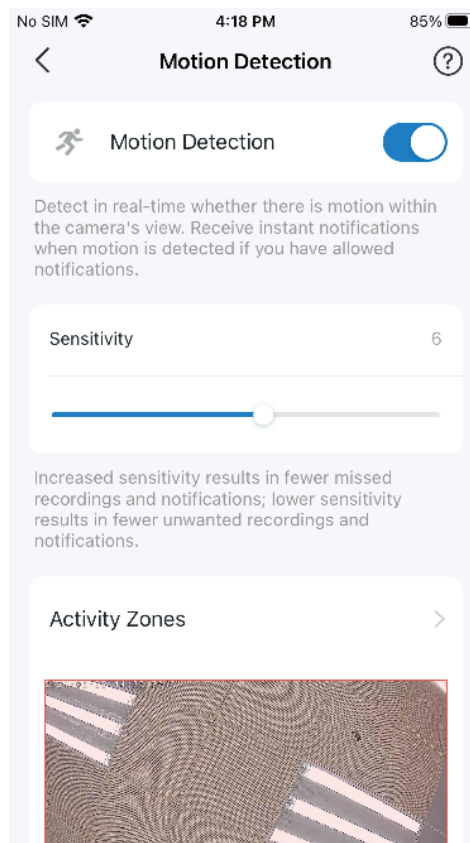
Auto Tracking

Enable it when you want your Pan/Tilt camera to track a specific activity or all until it has stopped.



Motion Detection

When enabled, the camera will detect in real-time whether there is motion within the camera's view, notifying you with Notification on. You can adjust Sensitivity, and add Activity Zones.

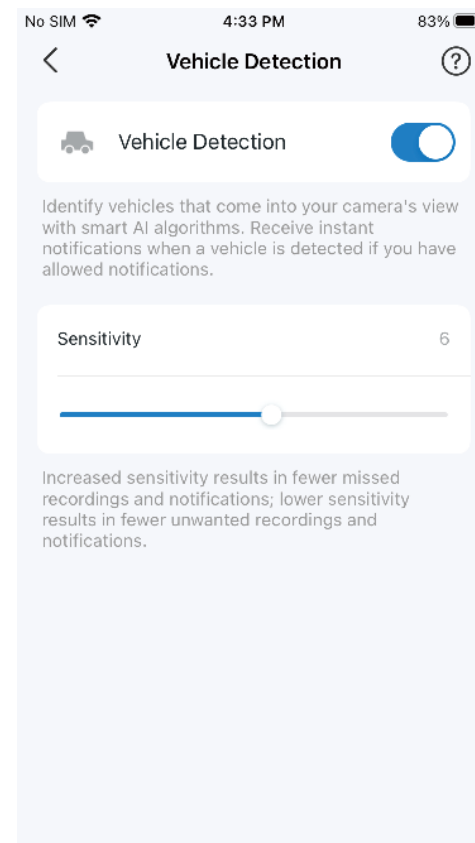
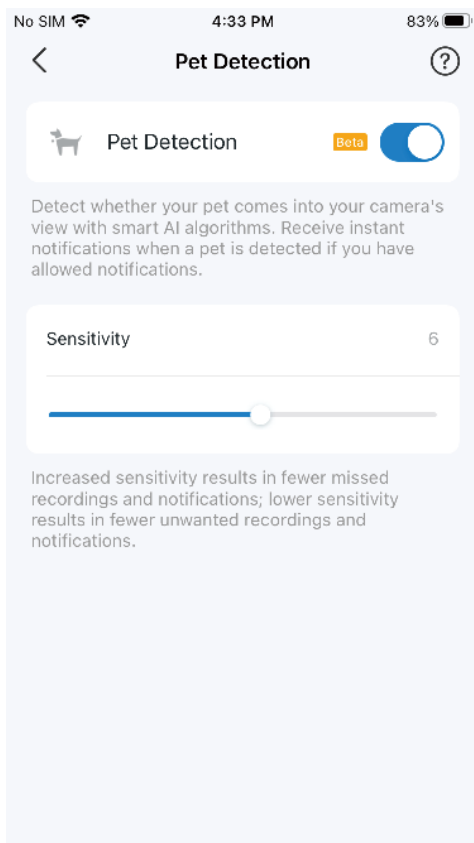
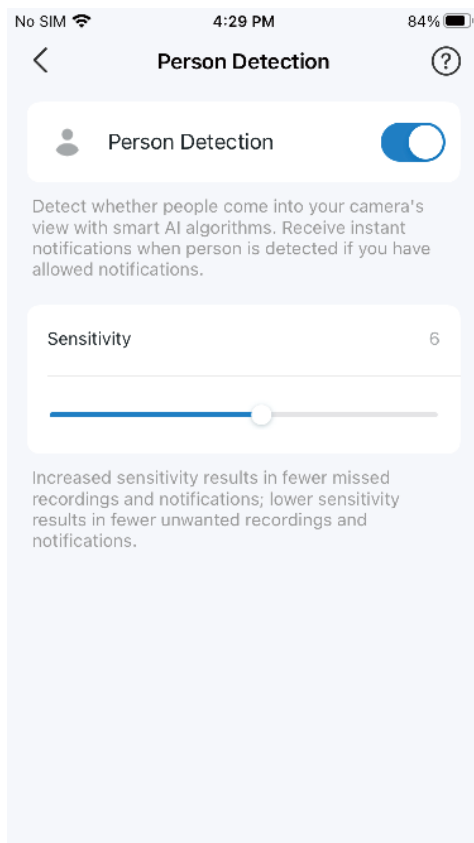


Detection

Note: Here we take Tapo C225 V2 as an example. Features on the detection page may vary from different models.

Person Detection / Pet Detection / Vehicle Detection

When enabled, the camera will detect whether people/pets/vehicles that come into your camera's view, notifying you with [Notification](#) on. You can adjust [Sensitivity](#).

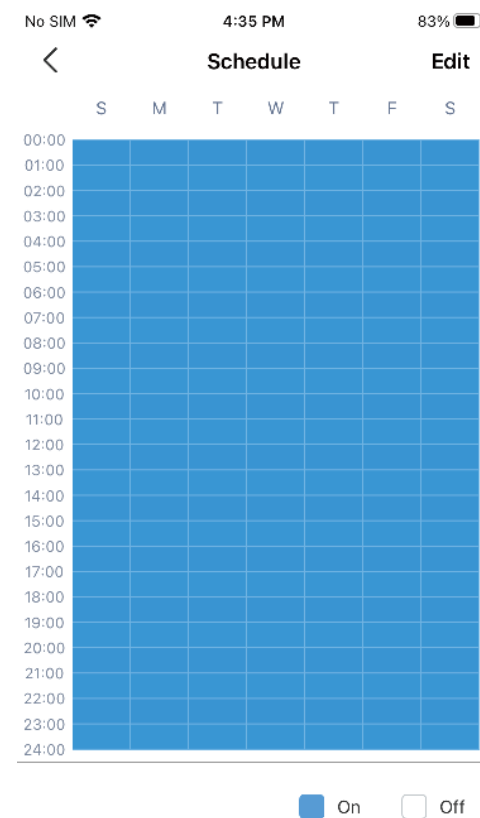
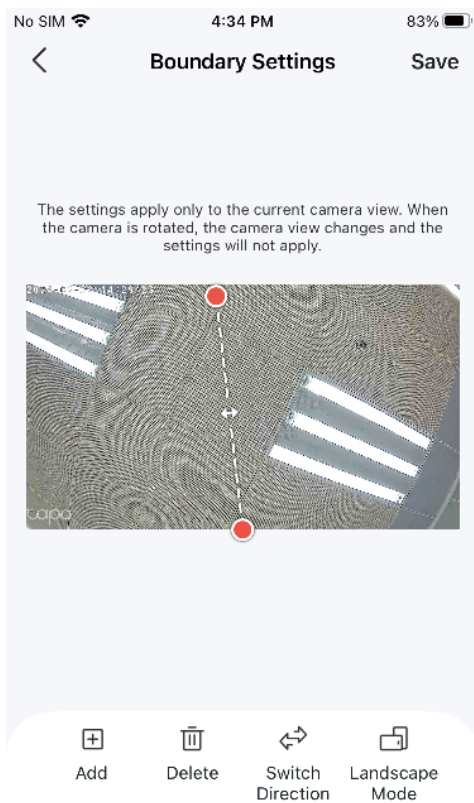
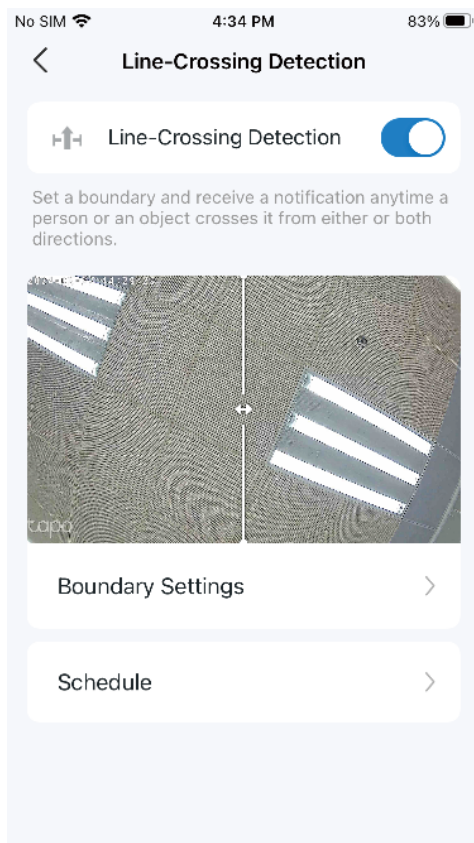


Detection

Note: Here we take Tapo C225 V2 as an example. Features on the detection page may vary from different models.

Line-Crossing Detection

Set a boundary and receive a notification anytime a person or an object crosses it from either or both directions. You can change [Boundary Settings](#) and edit [Schedule](#).

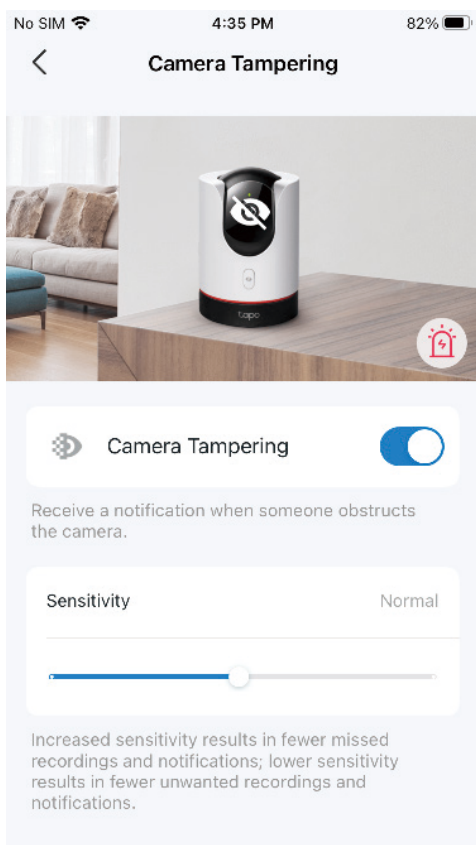


Detection

Note: Here we take Tapo C225 V2 as an example. Features on the detection page may vary from different models.

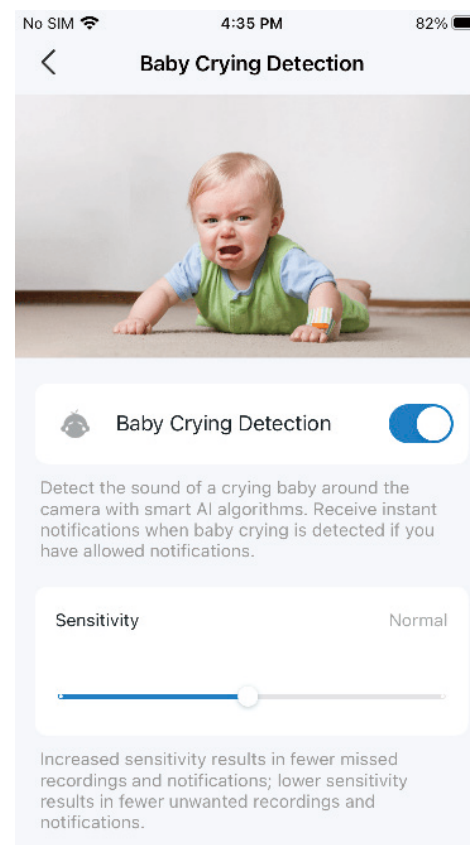
Camera Tampering

When enabled, you will receive a notification when someone obstructs the camera. You can adjust [Sensitivity](#).



Baby Crying Detection

Enable to detect the sound of a crying baby around the camera, notifying you with [Notification](#) on. You can adjust [Sensitivity](#).



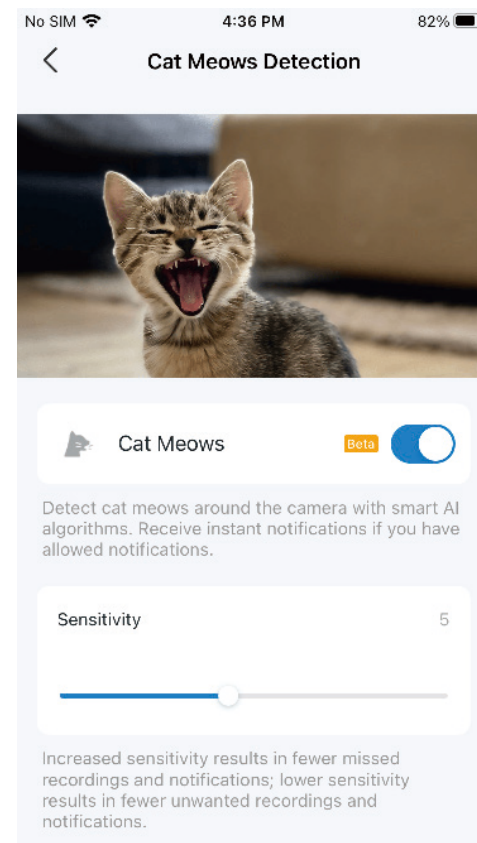
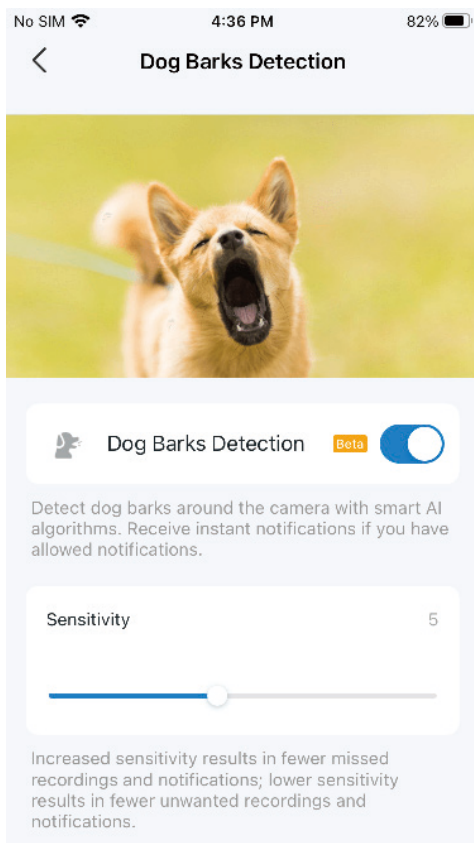
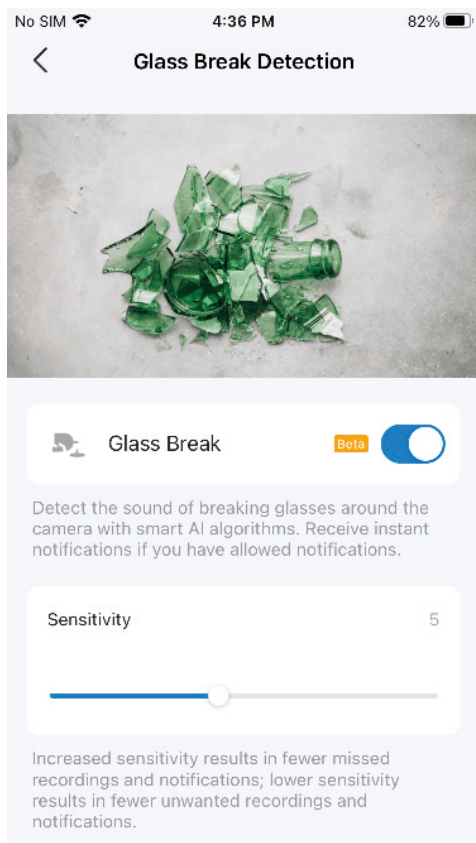
Detection

Note: Here we take Tapo C225 V2 as an example. Features on the detection page may vary from different models.

Glass Break Detection / Dog Barks Detection / Cat Meows Detection

Enable to detect the sound of breaking glasses, dog barks, and cat meows around the camera, notifying you with [Notification](#) on. You can adjust [Sensitivity](#).

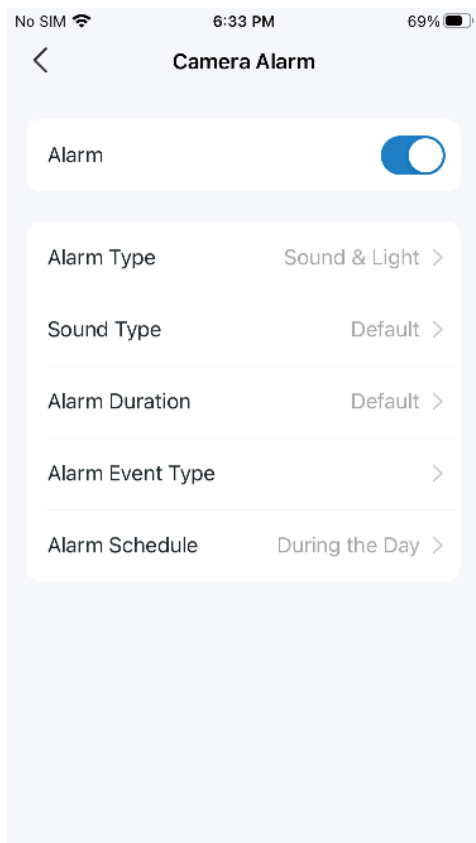
Note: Glass Break Detection, Dog Barks Detection, and Cat Meows Detection are beta versions.



Alarm

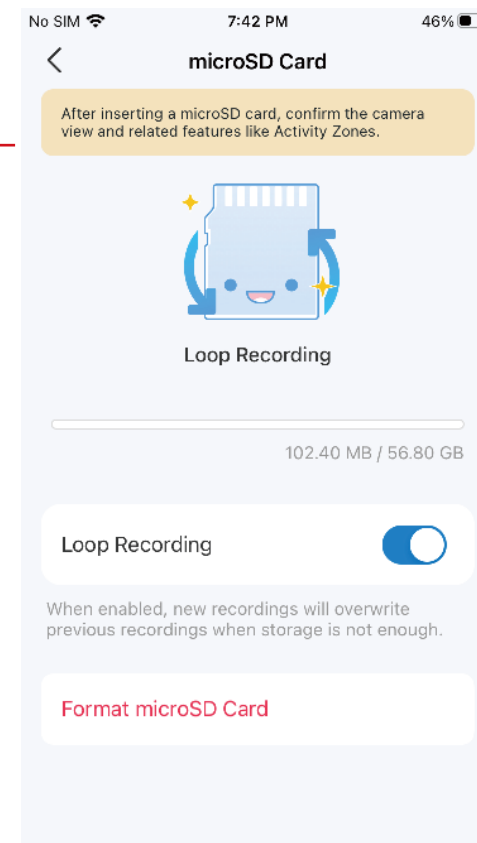
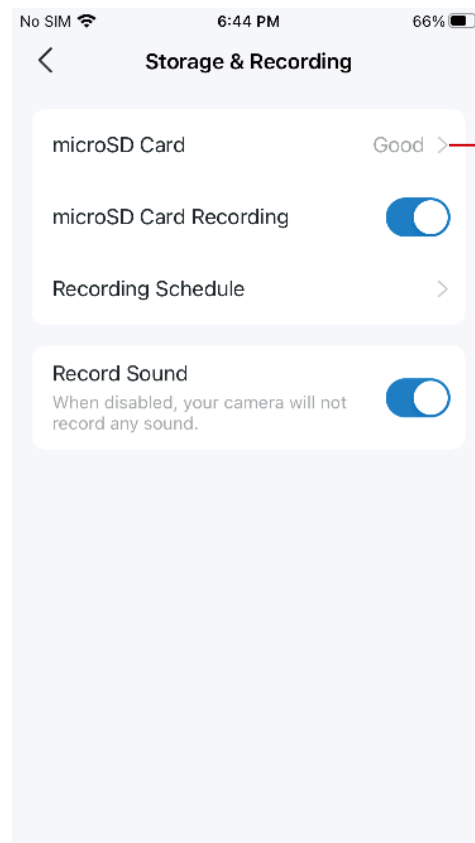
You can enable Alarm. Then you can change Alarm Type/ Sound Type/Alarm Duration, select Alarm Event Type, and choose Alarm Schedule.

■Note: Here we take Tapo C225 V2 as an example.



Storage & Recording

You can enable [microSD Card Recording](#), set [Recording Schedule](#), and enable [Record Sound](#) as needed. If you tap [microSD Card](#), you can check the storage capacity, enable [Loop Recording](#), and [Format microSD card](#).

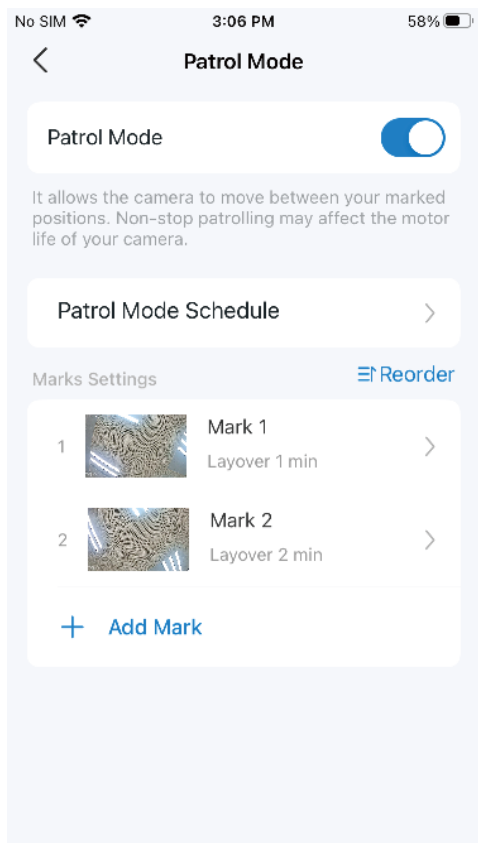


Pan & Tilt

Note: Only Pan/Tilt cameras have this feature. Here we take Tapo C225 V2 as an example.

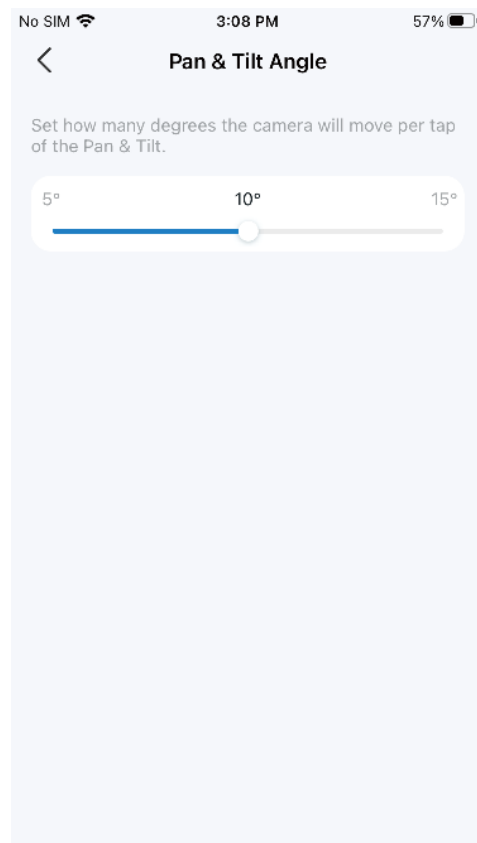
Patrol Mode

It allows the camera to move between your marked positions. Follow the guide <https://www.tp-link.com/support/faq/3945/>.



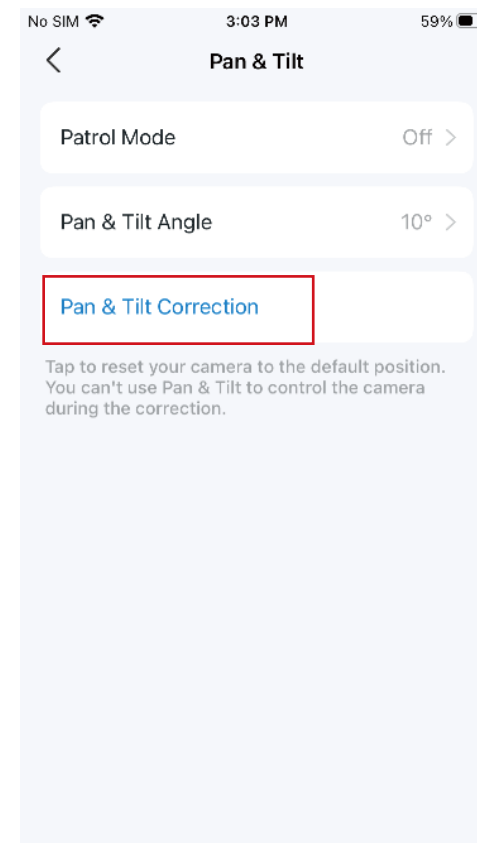
Pan & Tilt Angel

Set how many degrees the camera will move per tap of the Pan & Tilt.



Pan & Tilt Correction

Tap to reset your camera to the default position.

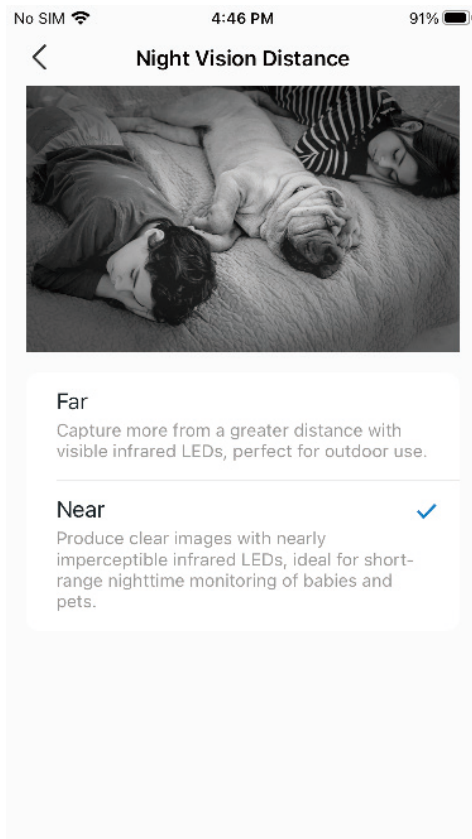


Video & Display

Night Vision Distance

Choose [Far](#) or [Near](#) as needed. If you want the camera to emit invisible IR lights in low-light condition, choose [Near](#).

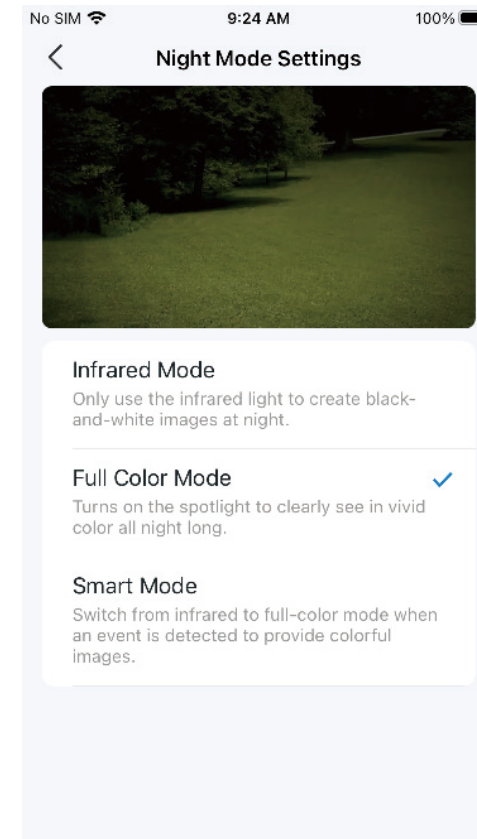
■Note: Here we take Tapo C225 V2 as an example.



Night Mode Settings

Choose from [Infrared Mode](#), [Full Color Mode](#), or [Smart Mode](#) as needed.

■Note: Only cameras with spotlights can switch the night mode. Here we take Tapo C320WS as an example.

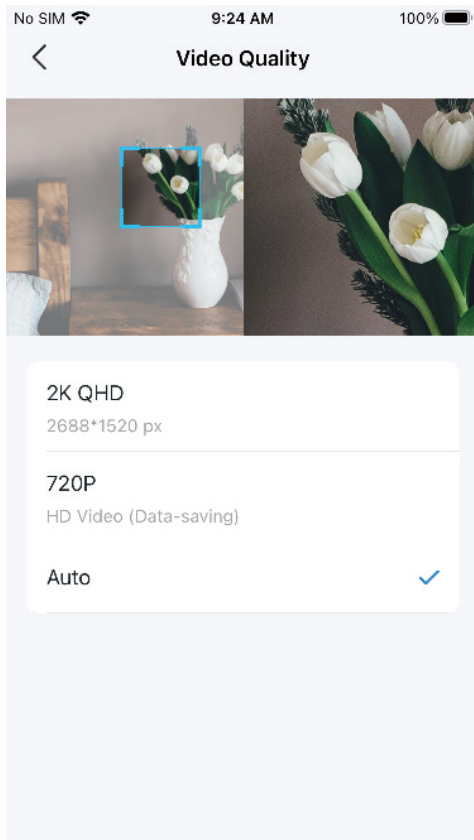


Video & Display

Video Quality

Switch [Video Quality](#) as needed. Higher video quality requires a better internet connection and larger storage capacity.

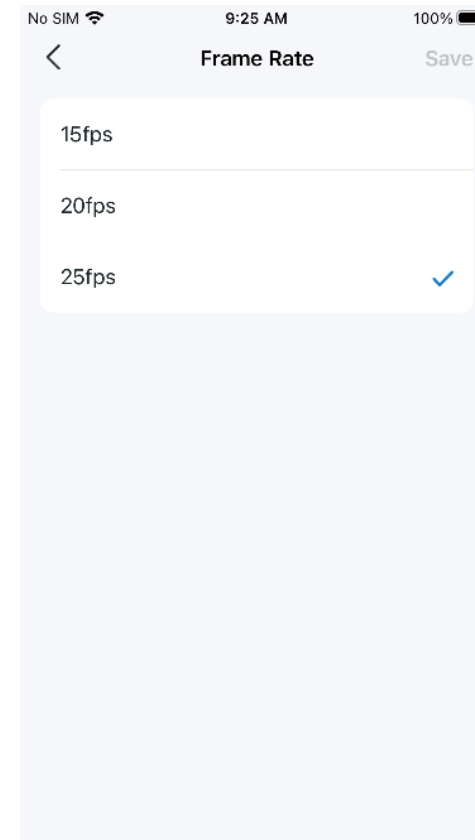
■Note: Here we take Tapo C225 V2 as an example.



Frame Rate

Switch [Frame Rate](#) as needed. Higher frame rates result in larger file sizes and increased bandwidth requirements.

■Note: Here we take Tapo C225 V2 as an example.

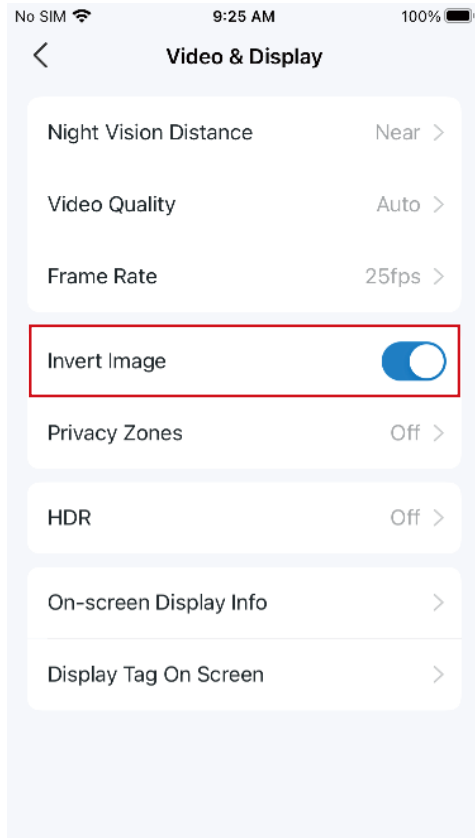


Video & Display

Invert Image

Toggle on [Invert Image](#) if the camera video image is upside down on the Tapo app.

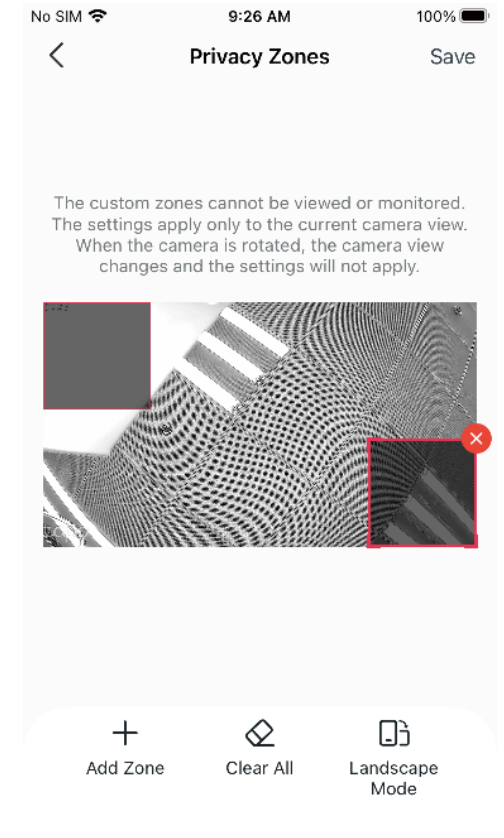
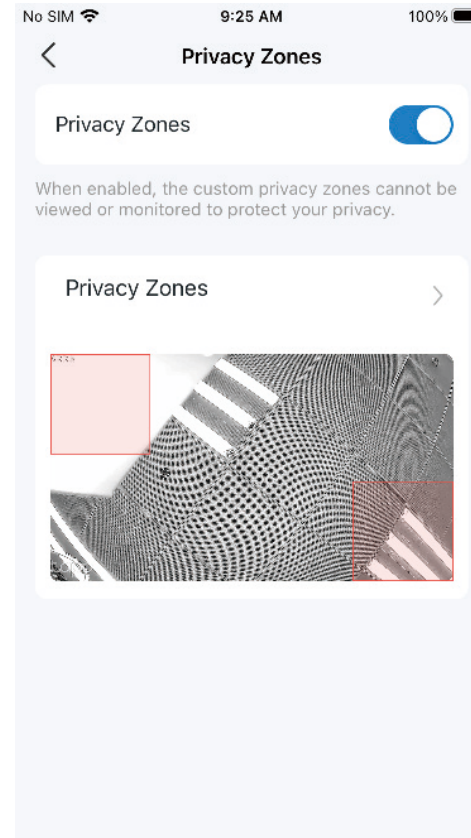
■Note: Here we take Tapo C225 V2 as an example.



Privacy Zones

Enable [Privacy Zones](#) and add privacy zones. The custom zones cannot be viewed or monitored to protect your privacy.

■Note: Here we take Tapo C225 V2 as an example.

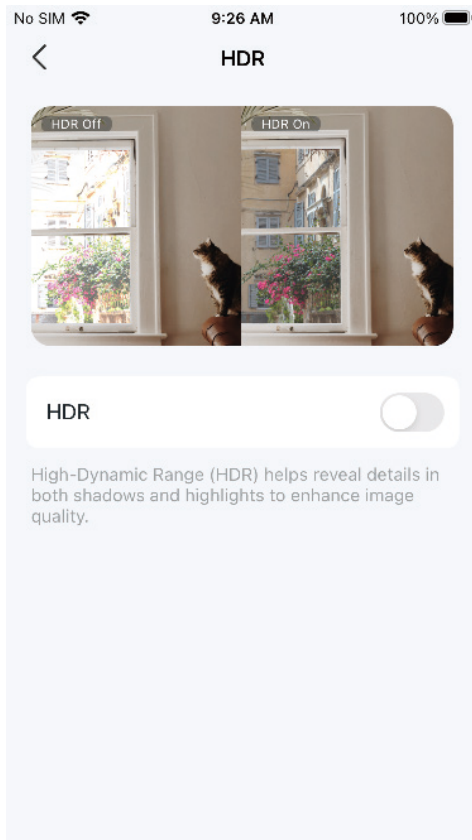


Video & Display

HDR

Enable HDR (High-Dynamic Range) to help reveal details in both shadow and highlights to enhance image quality.

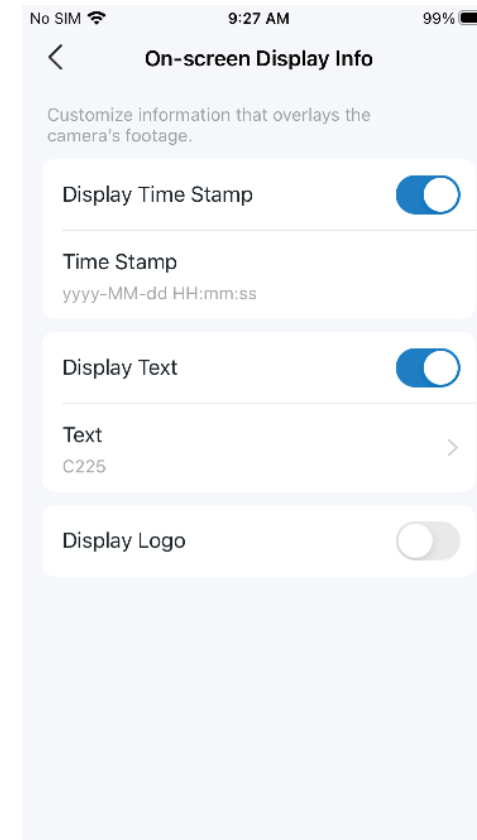
■Note: Here we take Tapo C225 V2 as an example.



On-screen Display Info

Customize information that overlays the camera's footage, including the time stamp, customizable text, and Tapo logo.

■Note: Here we take Tapo C225 V2 as an example.

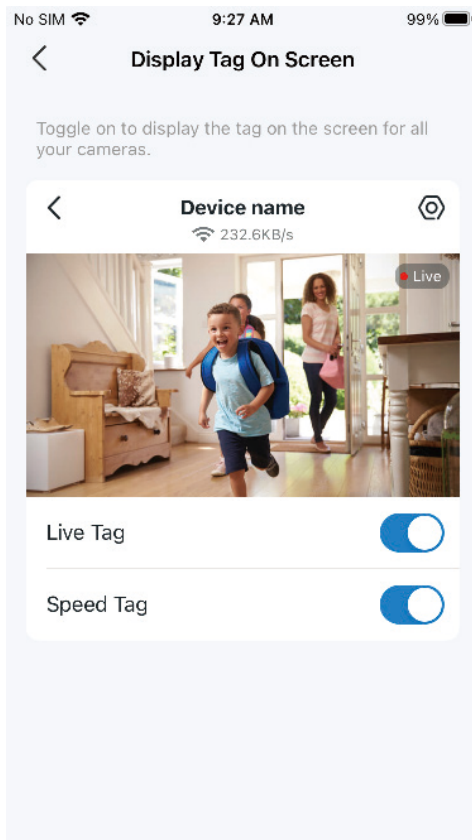


Video & Display

Display Tag On Screen

Toggle on to display **Live Tag** and **Speed Tag** on the screen for all your cameras.

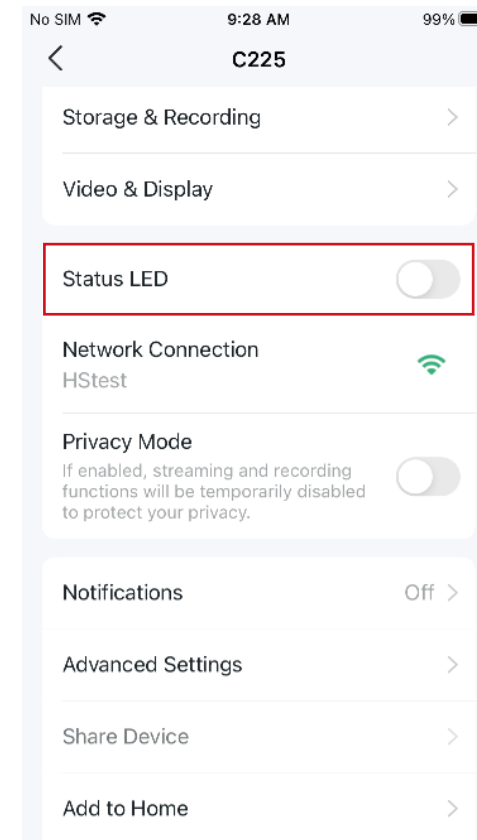
■Note: Here we take Tapo C225 V2 as an example.



Status LED

Toggle off **Status LED** if you want the camera to work with the system LED off to avoid attention.

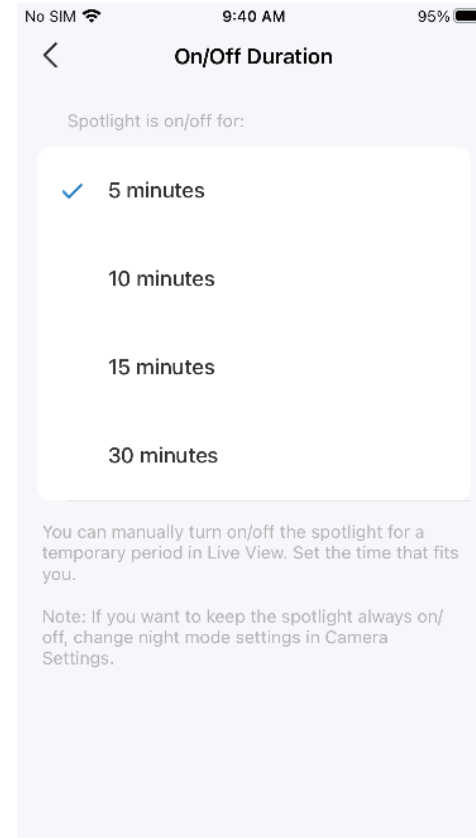
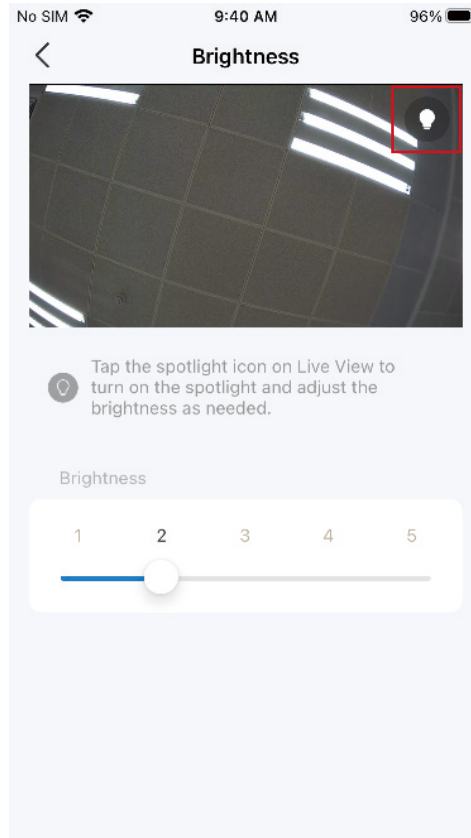
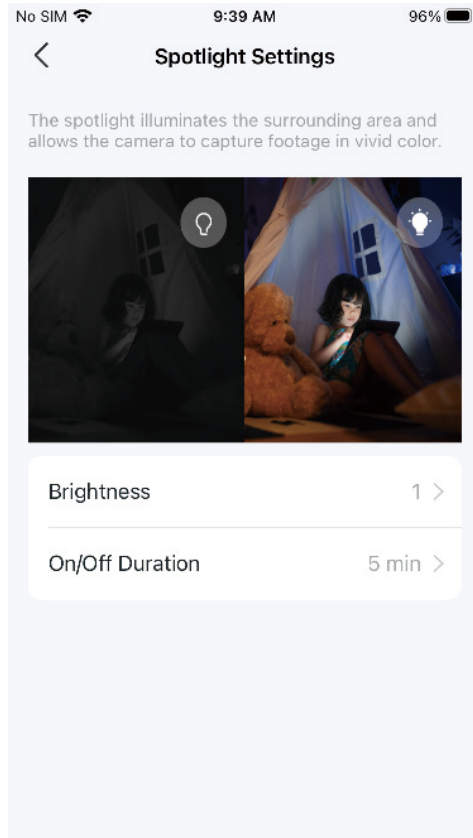
■Note: Here we take Tapo C225 V2 as an example.



Spotlight Settings

Tap the spotlight icon on the Live View page to turn on/off the spotlights and adjust the [Brightness](#) of spotlights. Then set the [On/Off Duration](#) time that fits you. To keep spotlights always on/off, change night mode settings in Camera Settings. The illuminated spotlights allow the camera to capture footage in vivid color.

■Note: Only cameras equipped with white lights or spotlights have this feature. Here we take Tapo C320WS as an example.

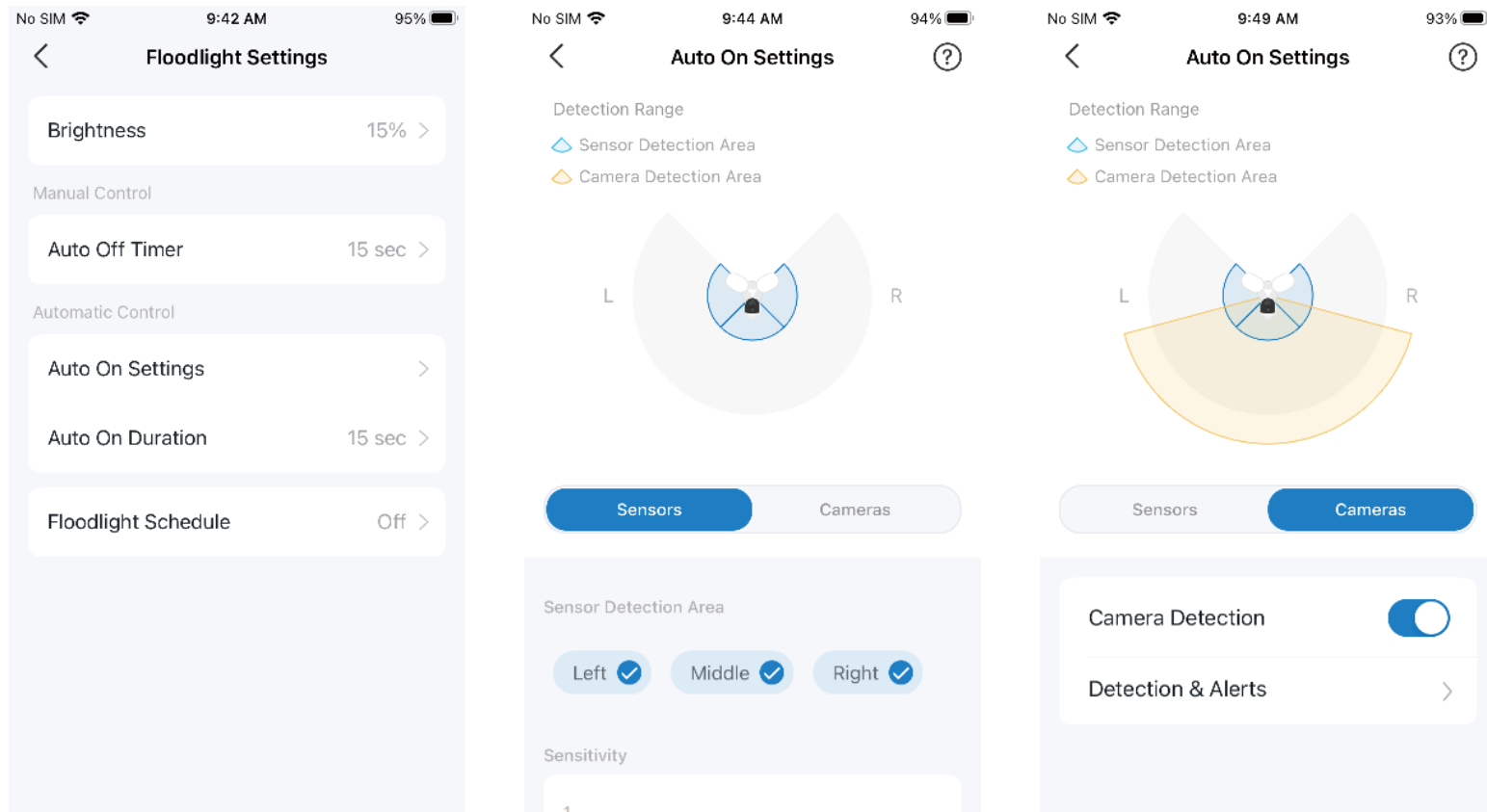


Floodlight Settings

■ Note: Only floodlight cameras have this feature.

Tap the spotlight icon on Live View page to turn on/off floodlights and adjust [Brightness](#) as needed. When [Auto Off Timer](#) enabled, the floodlights will be turned off after a set period of time.

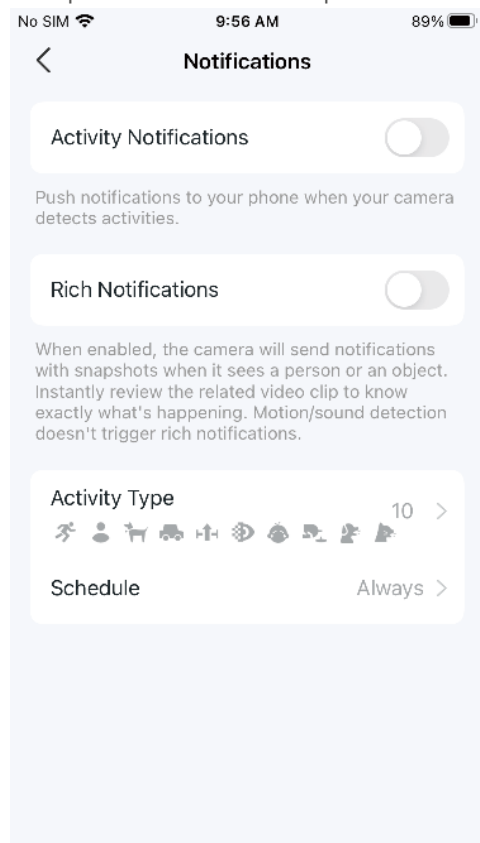
Floodlights will turn on once the motion sensor or camera detects an event. You can change [Auto On Settings](#), choose a duration, and set the schedule.



Notifications

Toggle on [Activity Notifications](#) and [Rich Notifications](#) (A Paid Tapo Care Service) as needed. Choose [Activity Type](#) and set the [Schedule](#) for which and when you want to receive push notifications.

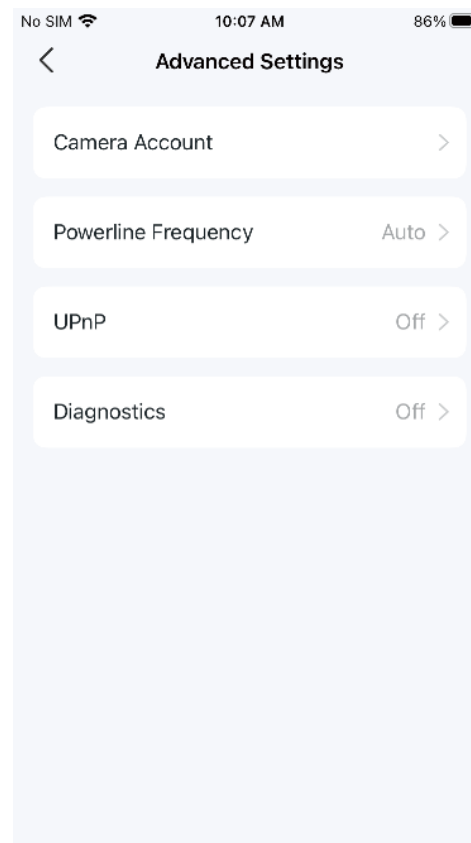
■Note: Here we take Tapo C225 V2 as an example.



Advanced Settings

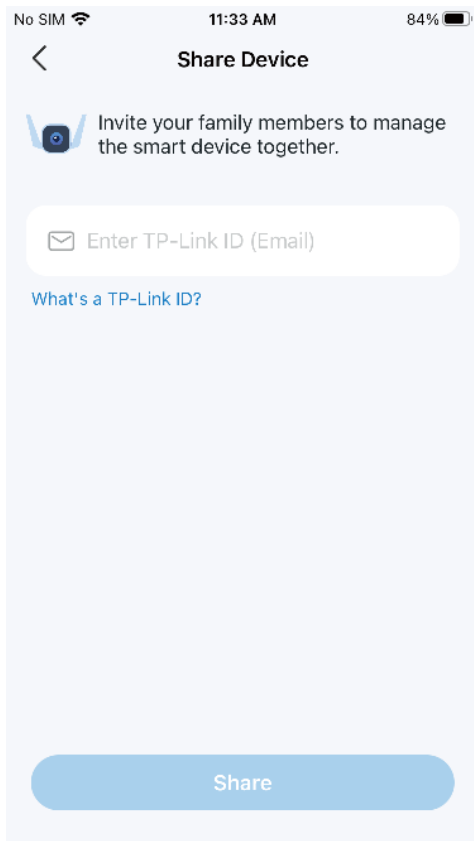
Go to [Camera Account](#) and you can follow the app guide to create an account for camera login via third-party portals.

You can also change [Powerline Frequency](#), and turn on [UPnP](#) or [Diagnostics](#) as needed.



Share Device

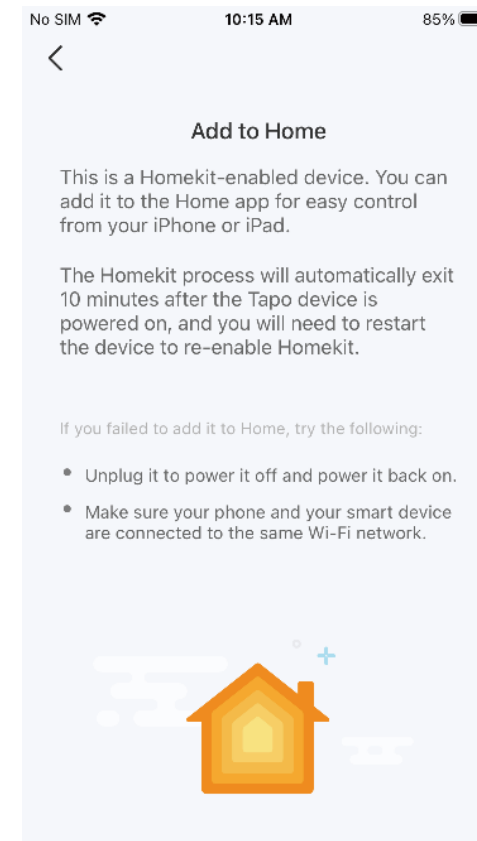
Tap [Share](#) to invite your family members to manage the smart device together.



Add to Home

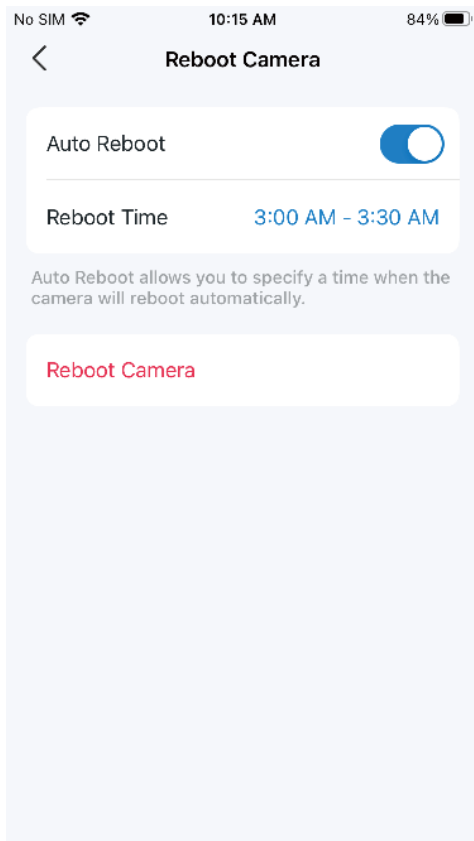
■Note: Only HomeKit-enabled cameras have this feature.

Tap [Add to Home](#) and follow the app guide to add a HomeKit-enabled camera to the Home app for easy control from your iPhone or iPad.



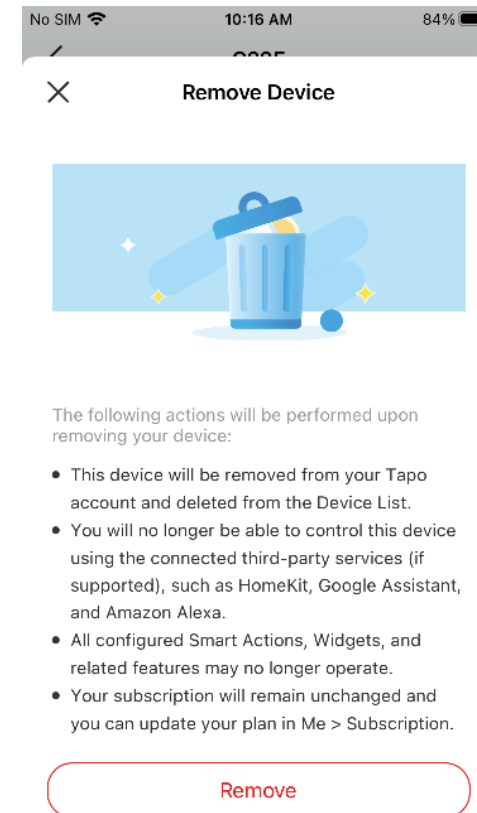
Reboot Camera

Enable [Auto Reboot](#) and set a [Reboot Time](#), so that the camera will reboot automatically to maintain optimal performance. You can also tap Reboot Camera to restart your device instantly.



Remove Camera

If you [Remove Camera](#), the camera will be reset to factory settings. You can also remove the device on Home page.

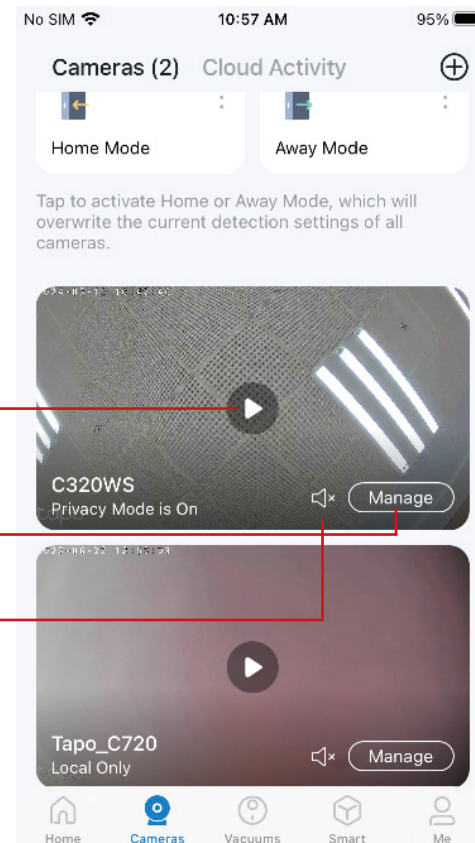
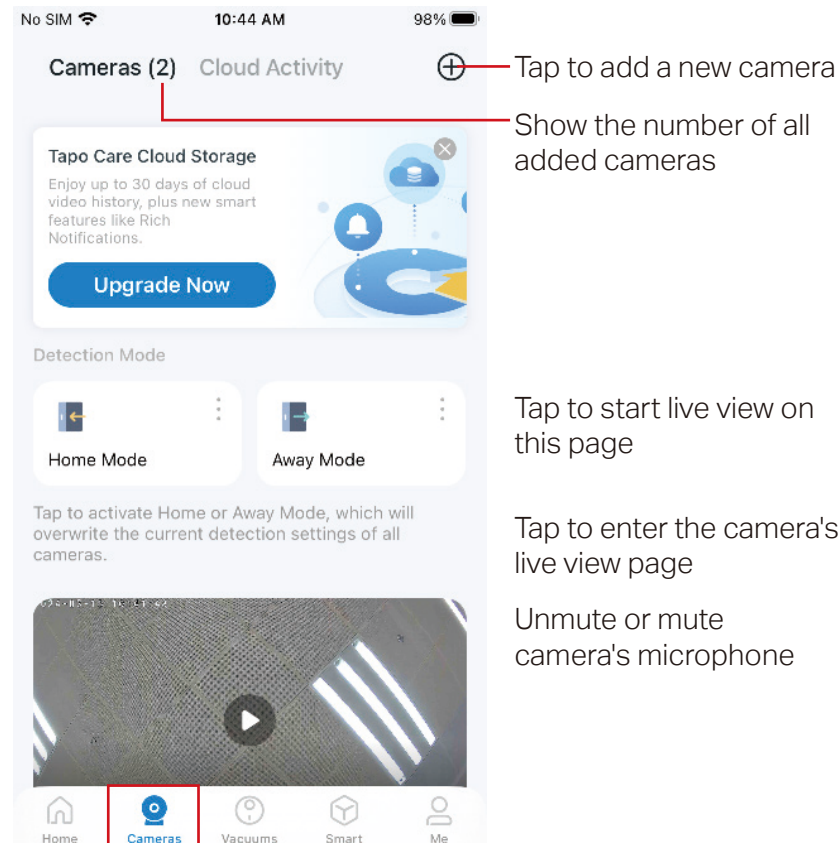


Cameras Page

Tapo app provides a shortcut to subscribe to Tapo Care cloud storage, activate Home or Away mode, live view all your cameras, and manage Cloud Activities.

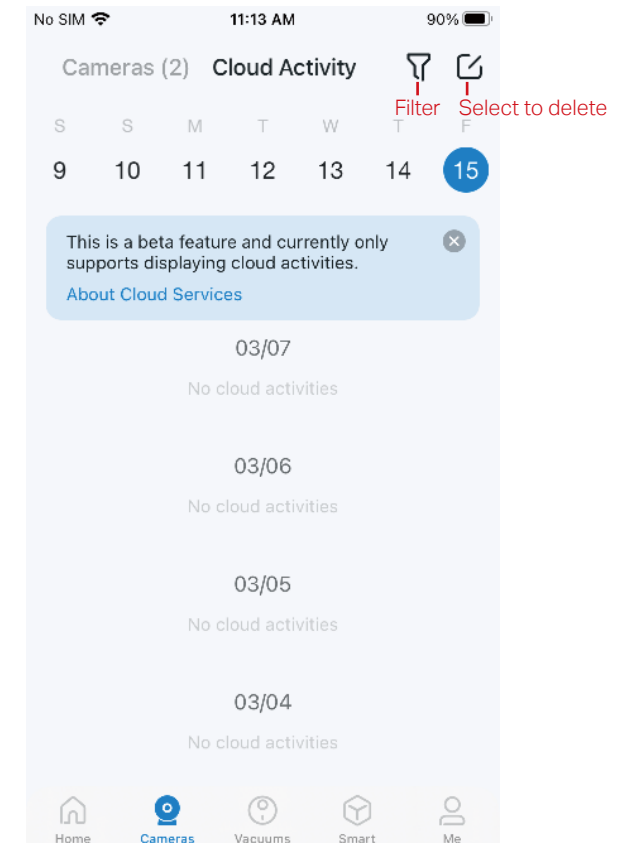
Cameras

Open the Tapo app, tap **Cameras** on the bottom to enter the page. Here is a brief introduction to features and icons on Cameras page.



Cloud Activity

Tap **Cloud Activity** on the top, then you can check, filter, and delete cloud activities as needed.

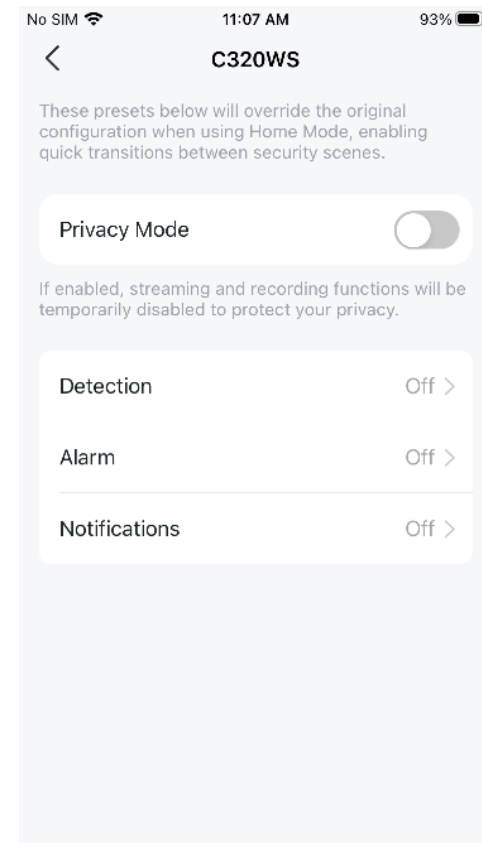
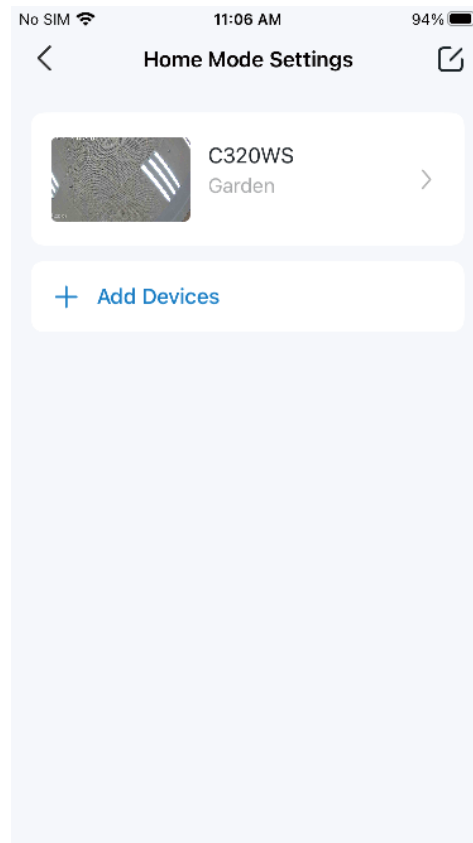
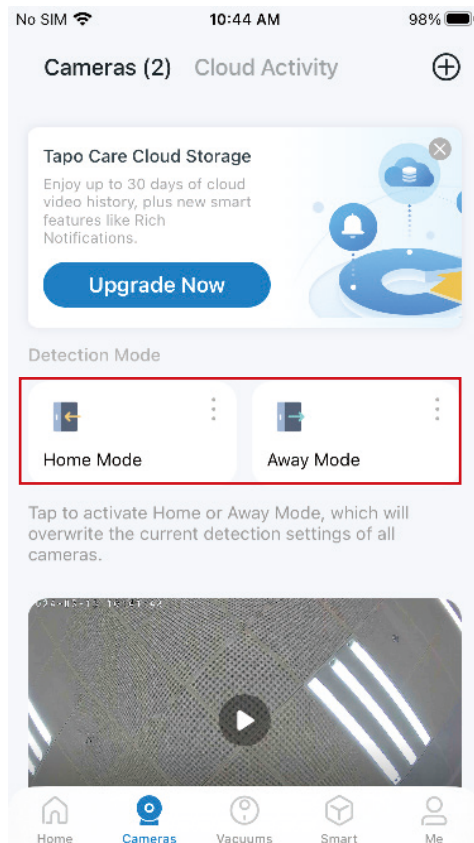


Home Mode / Away Mode

Step 1: Tap the  icon to enter Home Mode Settings or Away Mode Settings. Add cameras you want to apply preset Detection & Alerts settings.

Step 2: Tap the added camera to configure Detection, Alarm and Notifications settings as needed.

Step 3: Tap the  or  icon to activate Home or Away Mode, which will overwrite the current detection settings of all cameras.



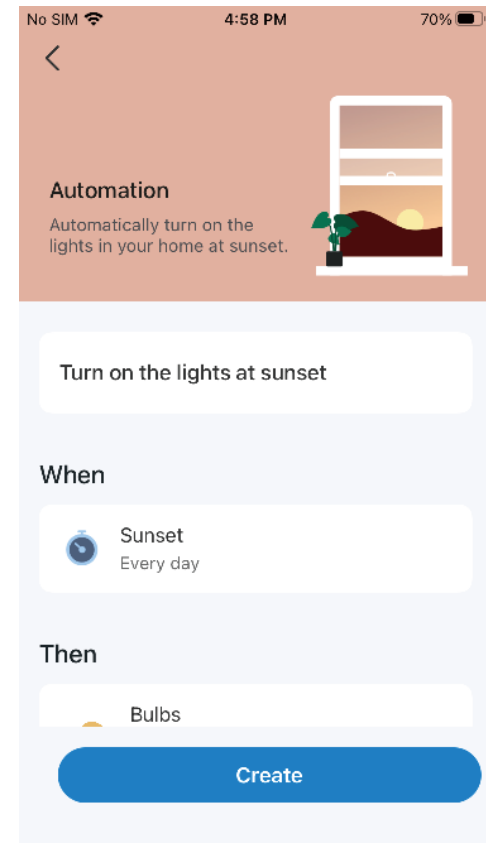
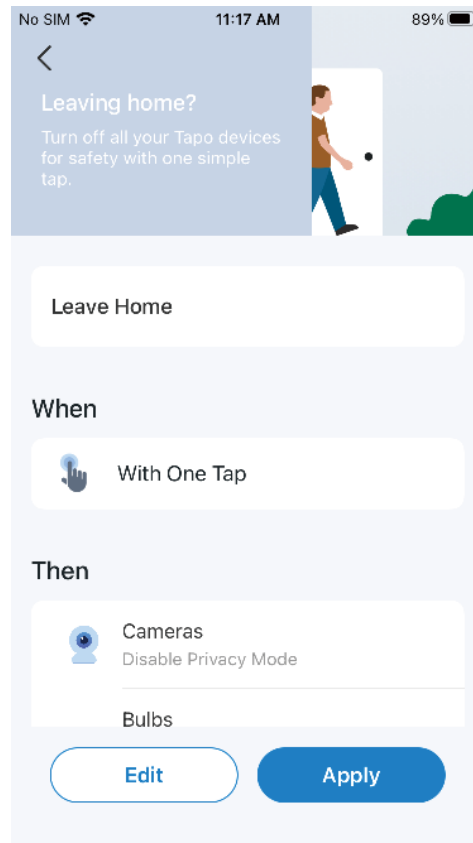
Smart Actions

Smart Actions automate repetitive tasks, allowing you to blaze through tedium with utmost ease. Set everything up once and never have to worry about it again. With Smart Actions, giving your home that level of intelligence is a snap. Shortcut lets you perform an action with a simple tap. Automation allows you to automate tasks to be performed at a set time. e.g. Turn on the lamp plugged into your Tapo smart plug when your camera detects motion.

Option 1: Edit based on the routine actions

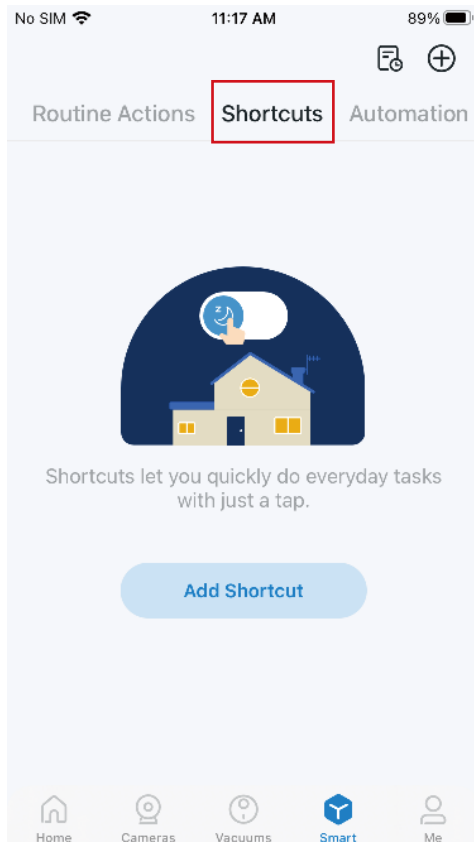
1. Open the Tapo app, tap **Smart** on the bottom to enter the smart actions page.

2. Under **Routine Actions**, tap an action. Tap **Edit** to change the settings as needed and tap **Apply** to save changes.

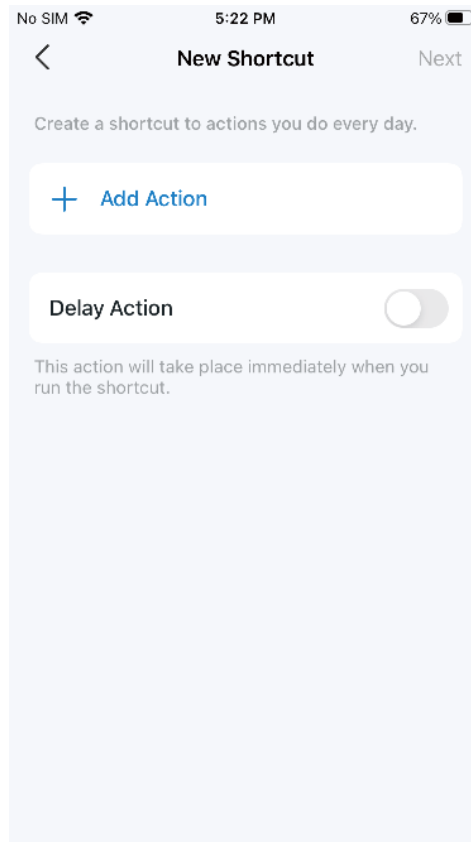


Option 2: Create your own shortcuts

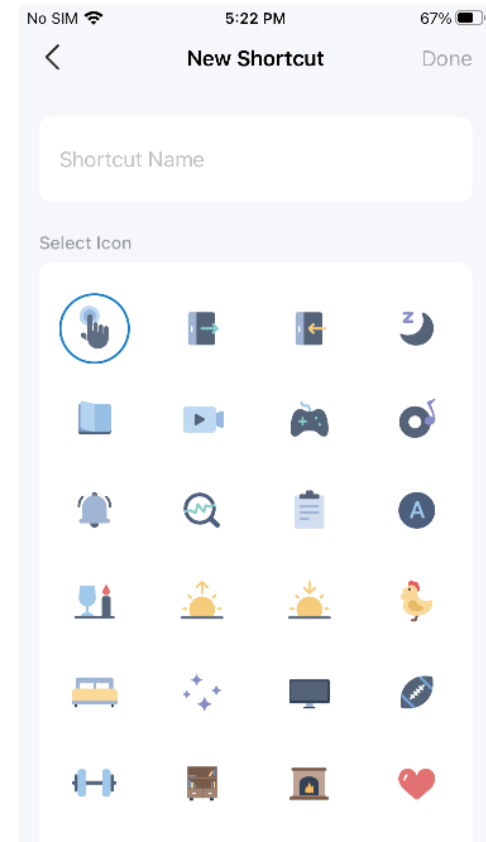
1. Under **Shortcuts**, tap + on the top right to add a simple and smart action.



2. Add an action and choose whether to delay the action.

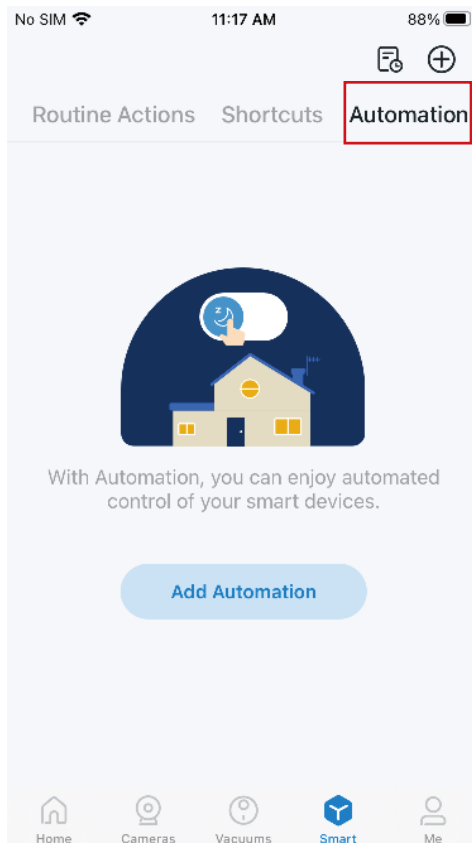


3. Name your shortcut and choose an icon. Tap **Done** to save all the settings.

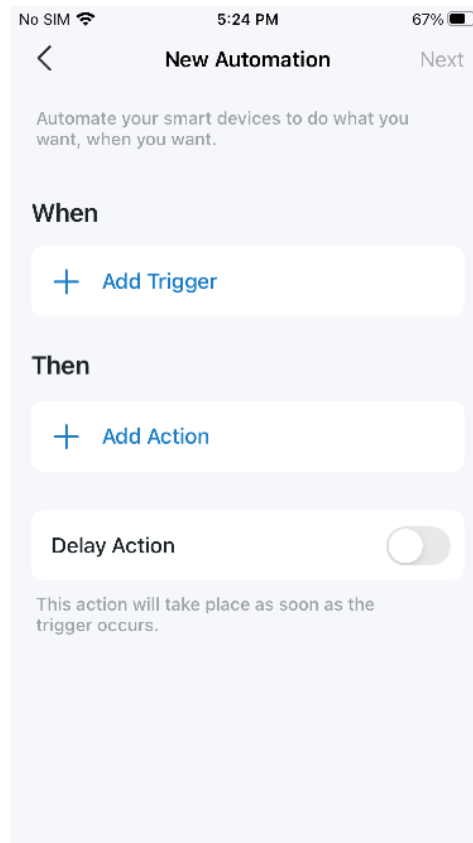


Option 3: Create your own actions

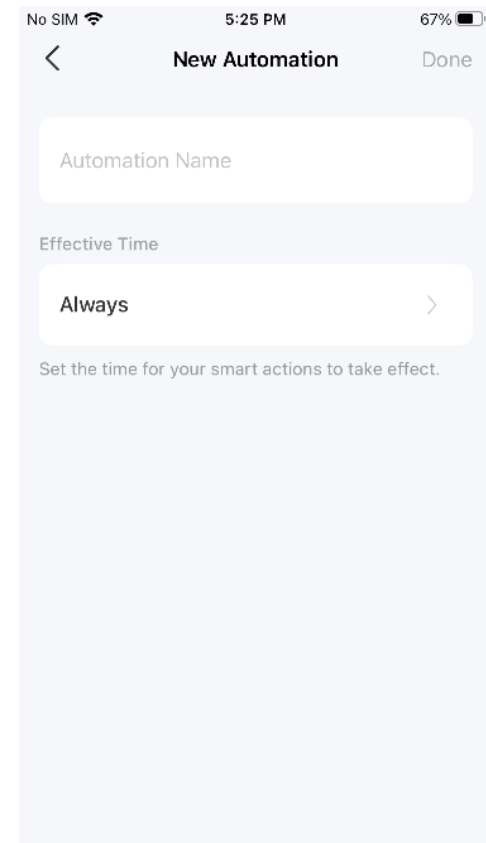
1. Under **Automation**, tap + on the top right to add a simple and smart action.



2. Name the new action. Tap + to add conditions (**When**) like the trigger time, and tap + to add tasks (**Then**) like turning on the switch.



3. Name your automation and set the effective time for the automation. Tap **Done** to save all the settings.

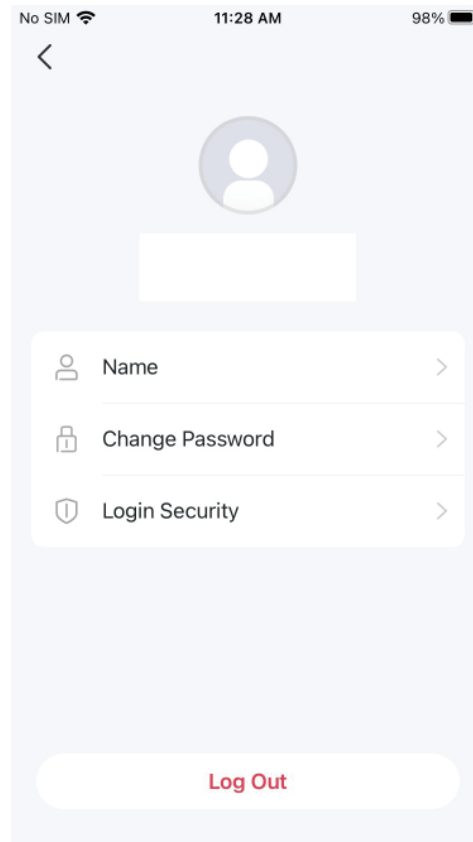
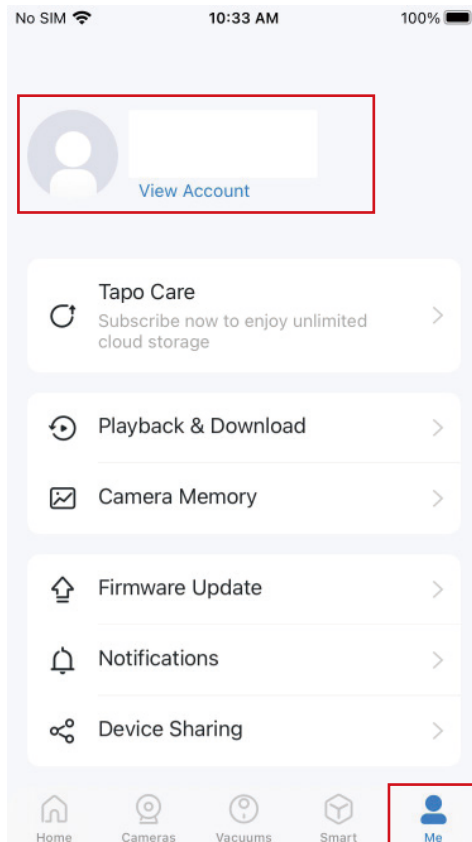


Me Page

The Tapo app offers a list of advanced features to fulfill diverse smart home needs.

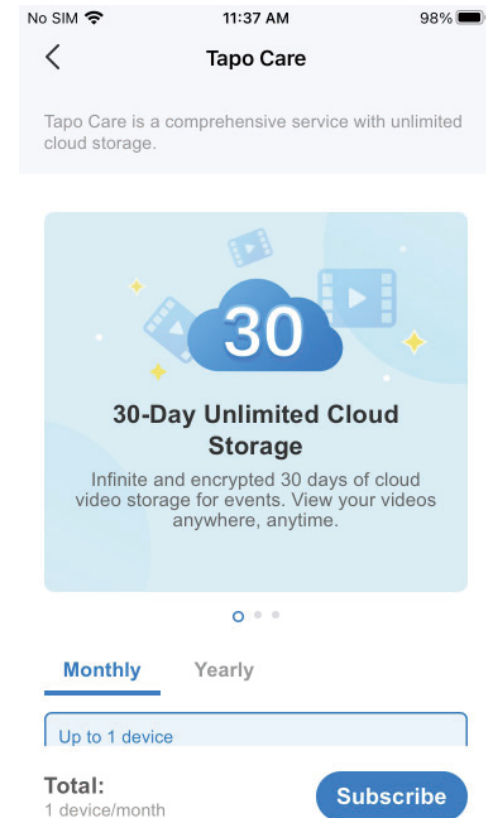
Manage Your Account

Open the Tapo app, tap **Me** on the bottom to enter the page. Then you can tap your avatar or account to change the avatar, name, password, and login security.



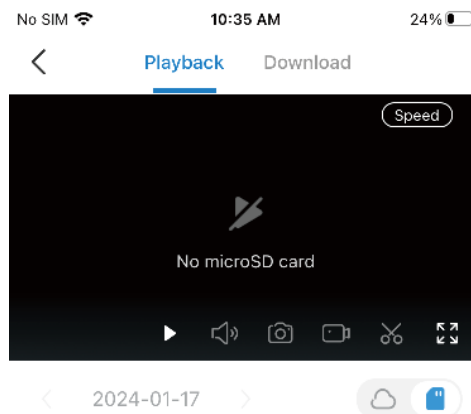
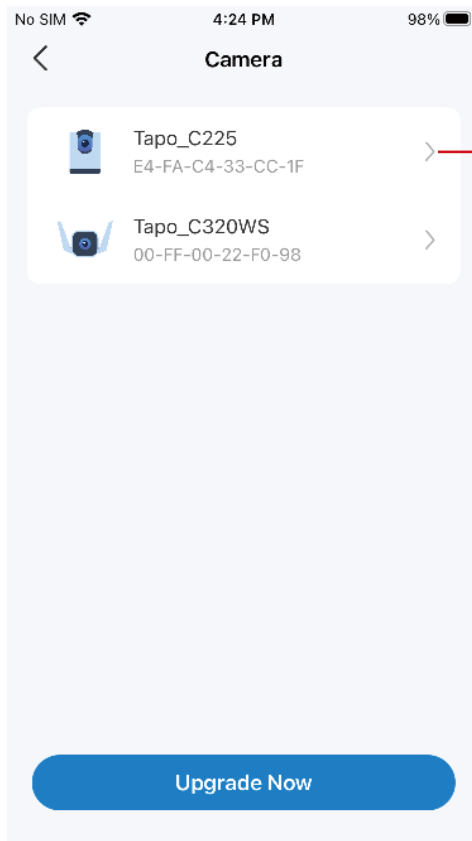
Tapo Care

Tapo Care is a comprehensive service with unlimited cloud services and advanced features. You can subscribe to the advanced plan for your Tapo cameras.




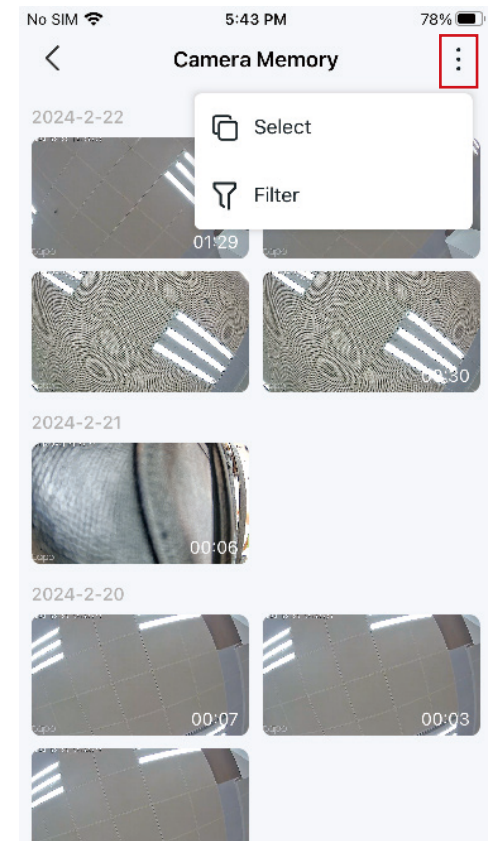
Playback & Download

You can tap any of your Tapo cameras to enter the camera's Playback & Download page. If you tap [Upgrade Now](#), the Tapo Care page appears.



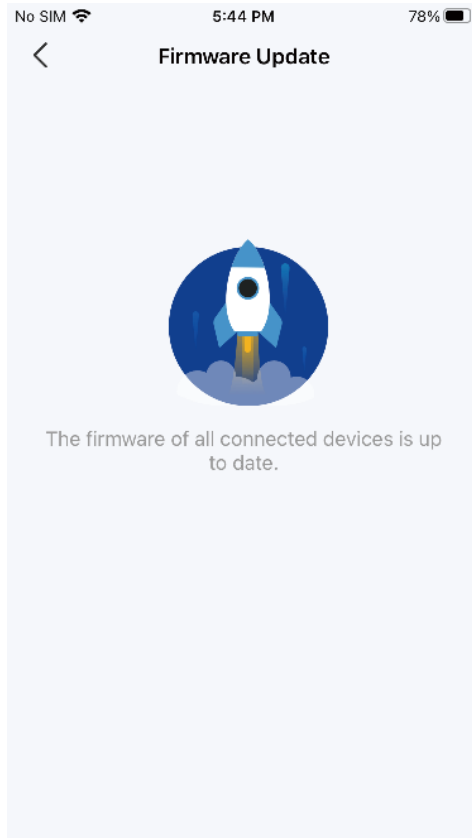
Camera Memory

All saved recordings appear in Memory. You can tap the  icon to manage and filter the recordings.



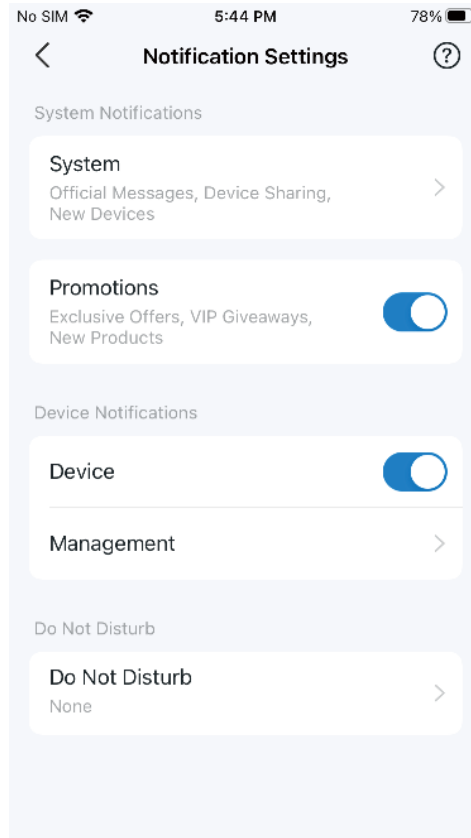
Firmware Update

Tap to check if any firmware updates are available on this page and update your devices as instructed.




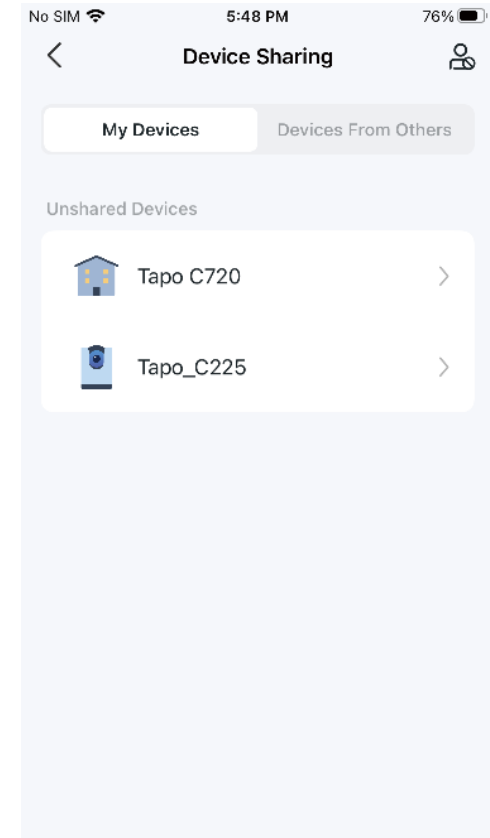
Notifications

Turn on Notifications to allow Tapo to show alerts on the Lock Screen, Banners, and Notification Center as needed.



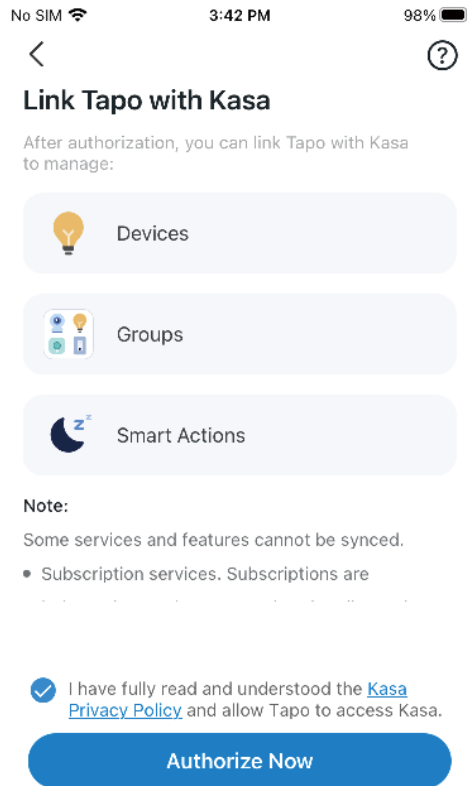
Device Sharing

Share your Tapo device with your families and check the devices shared by others. Tap the  icon to add a bothering inviter to the Deny List.



Link Tapo with Kasa

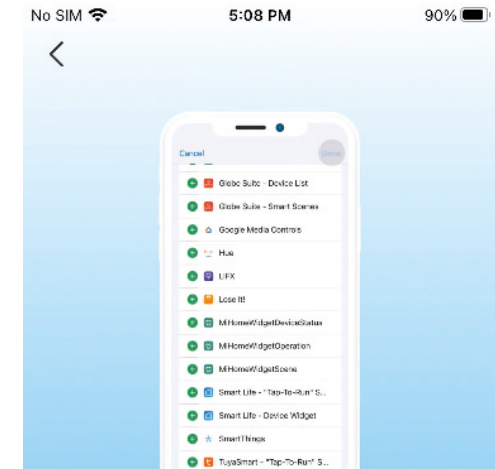
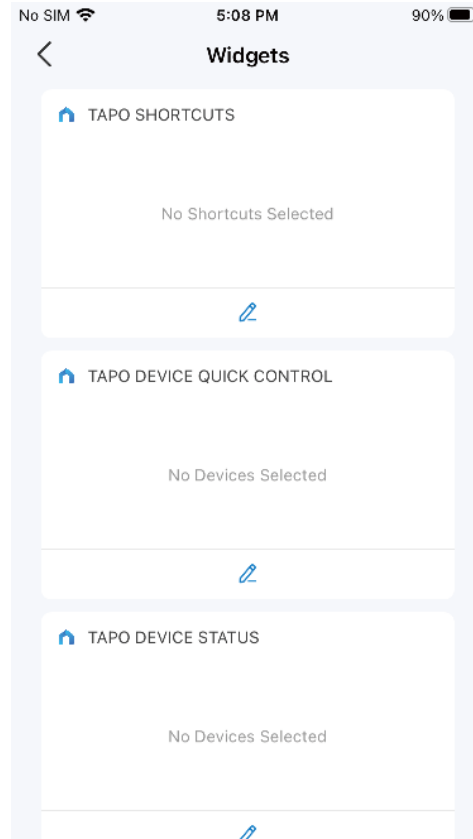
You can manage Kasa devices, groups, and smart actions in the Tapo app. Tap [Authorize Now](#) to allow Tapo to access Kasa.



Widgets

With Widgets, you can conveniently control your smart device from the home screen on Android devices or the Today View on iOS devices.

■Note: For detailed instructions, please refer to <https://www.tp-link.com/support/faq/3313/>.



How to use Widgets

With widgets, you can conveniently control your smart devices from the Today View on your iPhone, iPad or iPod touch.

1. Swipe right over the Home screen or Lock screen of your iPhone, iPad or iPod touch. You can see your widgets in the Today View.
2. Scroll to the bottom and tap "Edit". For iOS 14 and above, tap "Customize" at the bottom to continue.
3. Tap "+" to add Tapo widgets.
4. Tap "Done" to finish.

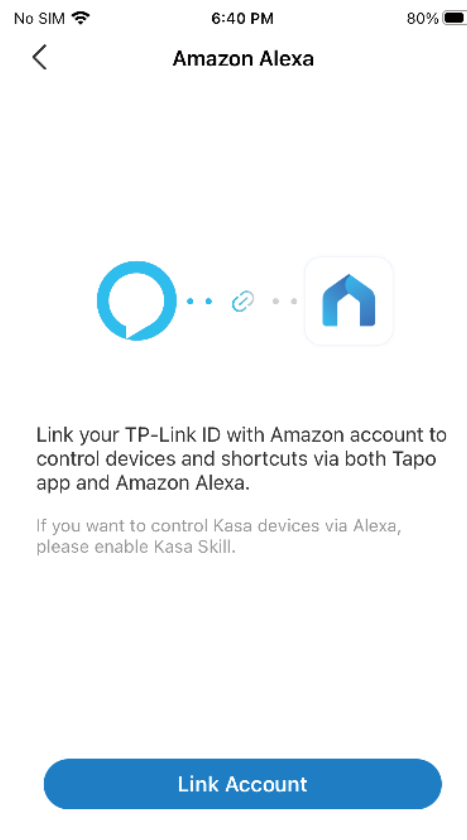
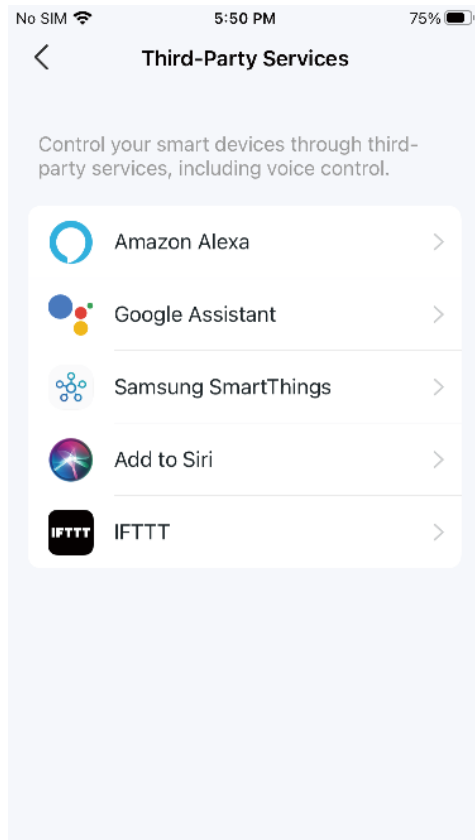
Note: If the widgets disappear due to the iOS

Third-Party Services

You can control your smart devices through third-party services, including voice control.

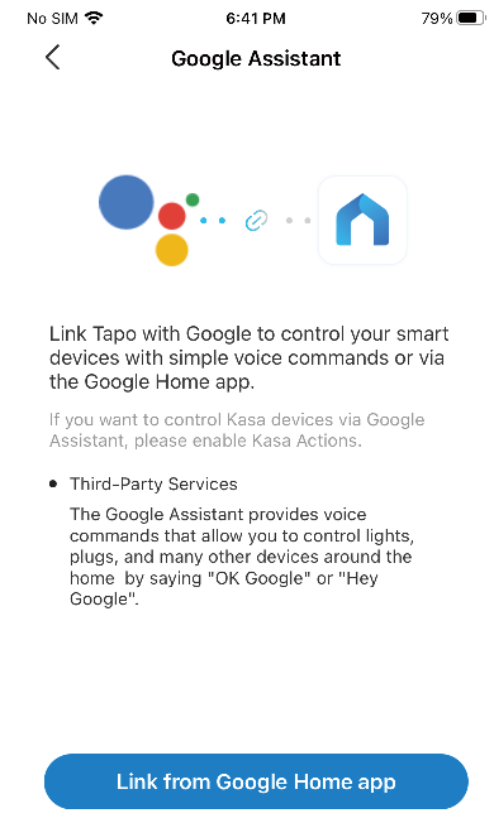
Amazon Alexa

Follow the guide <https://www.tp-link.com/hk/support/faq/2780/>.



Google Assistant

Follow the guide <https://www.tp-link.com/hk/support/faq/2779/>.

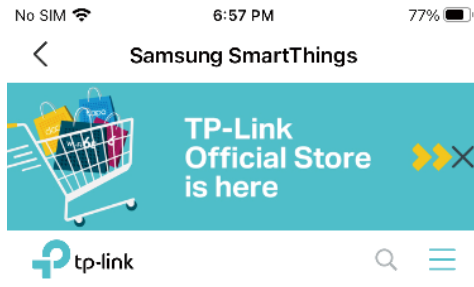


Third-Party Services

You can control your smart devices through third-party services, including voice control.

Samsung SmartThings / Add to Siri / IFTTT

You can tap the one as needed, then follow the detailed instructions on the Tapo to complete the connection. Add to Siri is for iOS devices only.



How to Configure Tapo Devices to Work with Samsung SmartThings

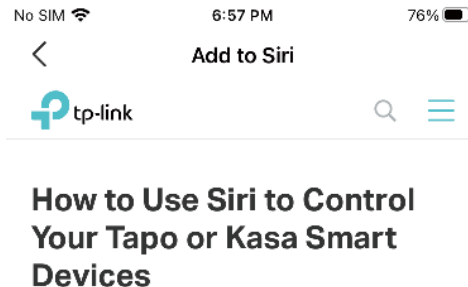
Configuration Guide

Updated 07-21-2023 20:58:58 PM

👁 272431

This Article Applies to: ♥

This article will introduce how to connect Tapo devices to your Samsung SmartThings app. After setting up the connection successfully, you will be able to control Tapo devices through your SmartThings app.



Configuration Guide

Updated 02-27-2024 09:12:53 AM

👁 325666

This Article Applies to: ♥

With the Shortcuts App in iOS 12 or above, you can use Siri to control your Tapo/Kasa smart devices — all with just a tap or by asking Siri. It's easy to create a new, custom shortcut using the Shortcuts app for iPhone or iPad. This article takes Tapo as an example to introduce how to implement this feature.

Before You Start:



Ensure your Tapo device is set up successfully and can connect to the internet.

