

BEFORE YOU BEGIN

Read these instructions and check to be sure all parts and tools are accounted for. Please retain these installation instructions for future reference.

The Front Bumper Lights are exclusively designed for your vehicle. Please read the installation instructions thoroughly before beginning. Installation is easier if the vehicle is clean and free of debris. For your safety, and to ensure a satisfactory installation, perform all installation steps correctly in the sequence shown.

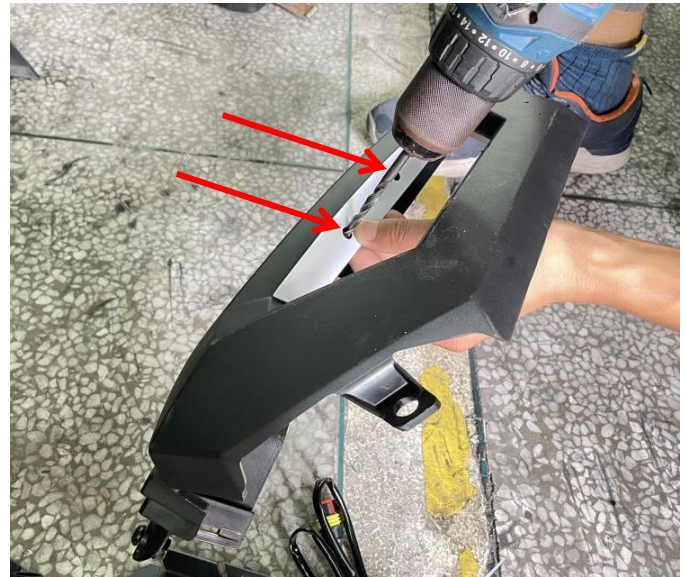
INSTALLATION INSTRUCTIONS

Note: Shift vehicle transmission into "PARK". Turn key to "OFF" position and remove from vehicle.

1. Product and accessories picture:

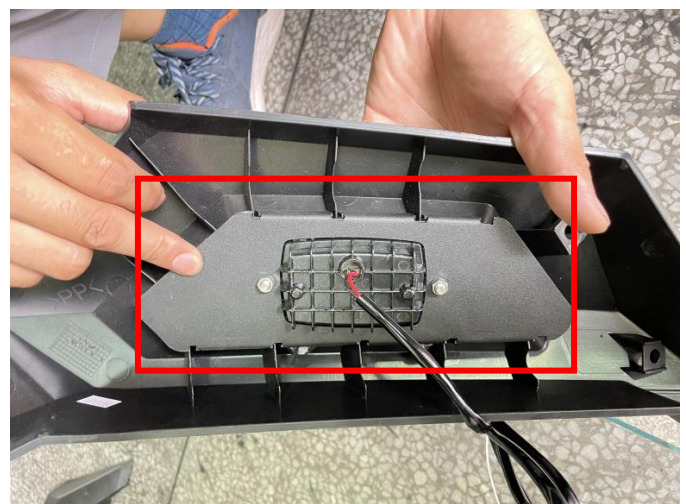


2. First, remove the plastic front fascia from the original vehicle, take out the positioning paper from the accessory package and place it on the front fascia. Use a 6MM drill bit to position and drill out screw holes on the paper. (The positioning paper is not divided into left and right sides and can be used in both directions).As shown in picture:



3. Install the decorative light on the front fascia and secure it with matching screws (the reinforcing ribs on the back of the front fascia need to be correspondingly stuck in the slots on the edge of the decorative light rear shell).As shown in picture:

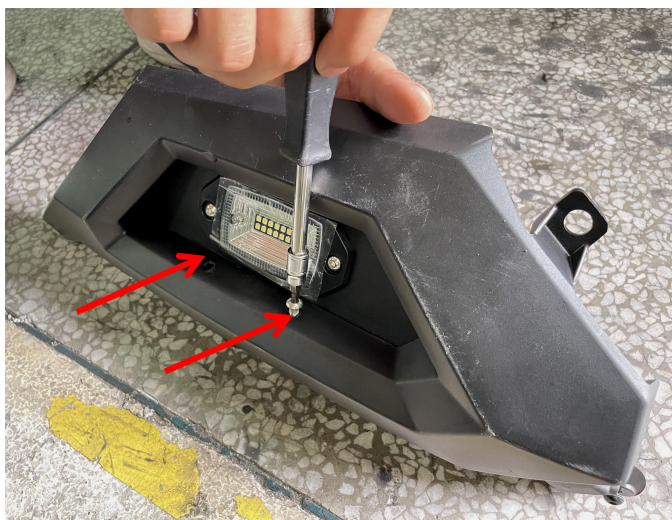
Note: The one with the longer decorative lamp wiring harness is installed on the left, while the one with the shorter wiring harness is installed on the right.



Front Bumper Lights for Yamaha RMAX 1000



ZP-YJ-031102-008



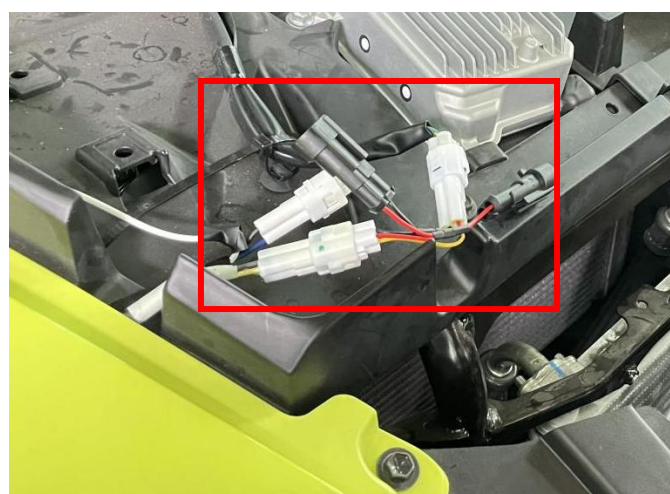
disconnect the high beam harness connector, and use the matching adapter wire of the product to reconnect it. As shown in picture:

Note: If you choose the adapter cable for the all black plug-in, you only need to find the original daytime running light harness plug-in, disconnect it, and then use the adapter cable to reconnect it accordingly.



4. There are 2 adapter cables in the accessory package, and you can choose to use one of them according to your preferences. (The adapter cable of the all black plug-in is connected to the original vehicle's daytime running lights, and when the daytime running lights are turned on, the decorative lights will light up. The adapter cable of the white plug-in is connected to the high beam headlights, and when the high beam lights are turned on, the decorative lights will light up.) The following wiring steps are to use a white plug-in adapter wire.

Open the original vehicle hood, locate the original headlights on the passenger side,



5. Thread the wire harness of the decorative lights on both sides through the gap to the adapter line, and connect it with the plug-in on the adapter line. Then start the vehicle to turn

Front Bumper Lights for Yamaha RMAX 1000

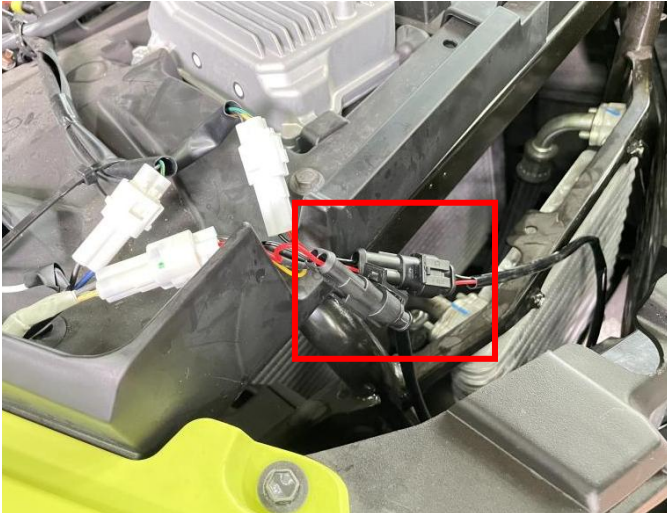


ZP-YJ-031102-008

on the high beam switch of the headlight, check whether the decorative lights are on normally, and reinstall the front fascia to the original vehicle after confirmation, and finally install the cover. As shown in picture:



Note: Please refer to the installation video in the Amazon listing before your installation, or contact the seller for the installation video.



6. Installation finished.