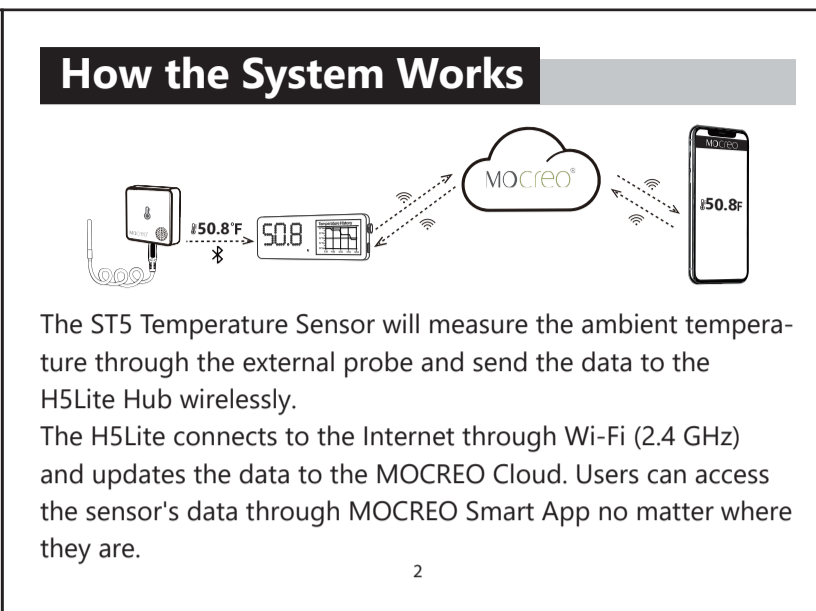




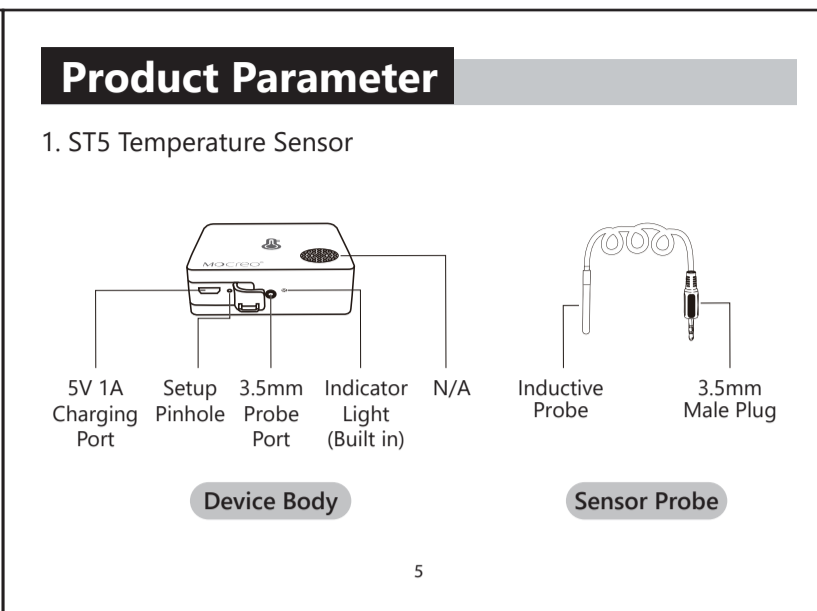
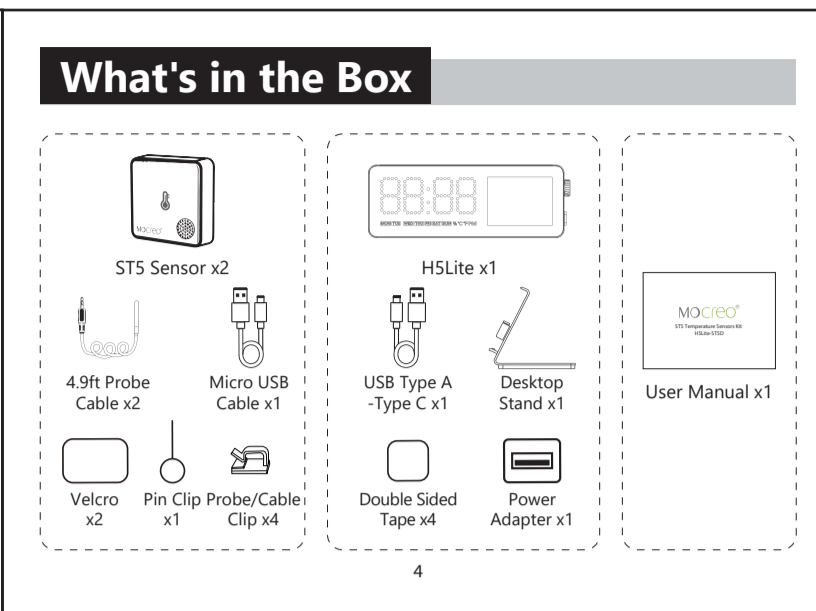
Content

- How the System Works 2
- Introduction 3
- What's in the Box 4
- Product Parameter 5
- Mounting 10
- Setup 12
- Troubleshooting 16
- Customer Service 17
- Precautions and Disclaimer 18
- FCC Statement 20
- Warranty 23



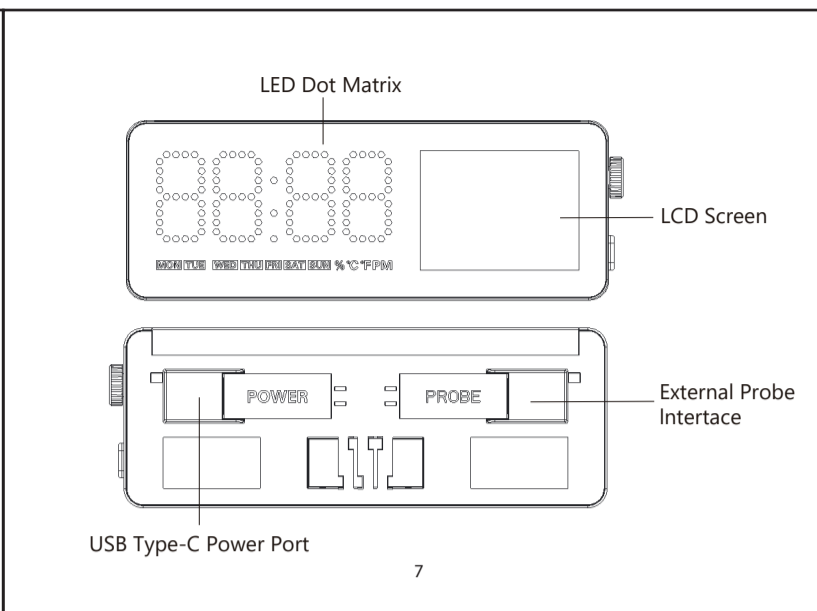
Introduction

- **H5Lite:** The H5Lite is a device that helps manage MOCREO sensors and connects to the Internet through Wi-Fi (2.4GHz). It has a screen where you can see sensor data, history charts, and other information in real-time.
- **ST5:** The ST5 is a wireless temperature sensor with an external probe, used to measure the ambient temperature, in spaces like refrigerators and freezers.



Specifications

| | |
|-------------------------------|---|
| Model | ST5 |
| Wireless Connection | Bluetooth |
| Communication Range | 131 ft (40 m) (Open space, no obstructions) |
| Dimensions | 2.4 x 2.4 x 0.7 in |
| Weight (Including Probe) | 2.93 oz |
| Battery (Rechargeable) | 3.7V 1800mAh Lithium Battery |
| Size of Stainless Steel Shell | 0.24 in (6 mm) diameter |
| Cable Length | 4.9 ft (1.5 m) |
| Cable Cross Section | 0.16 x 0.05 in |
| Probe Measuring Range | -40° - 221°F(-40° - 105°C) |
| Temperature Accuracy | ±0.9°F (14° - 185°F) |



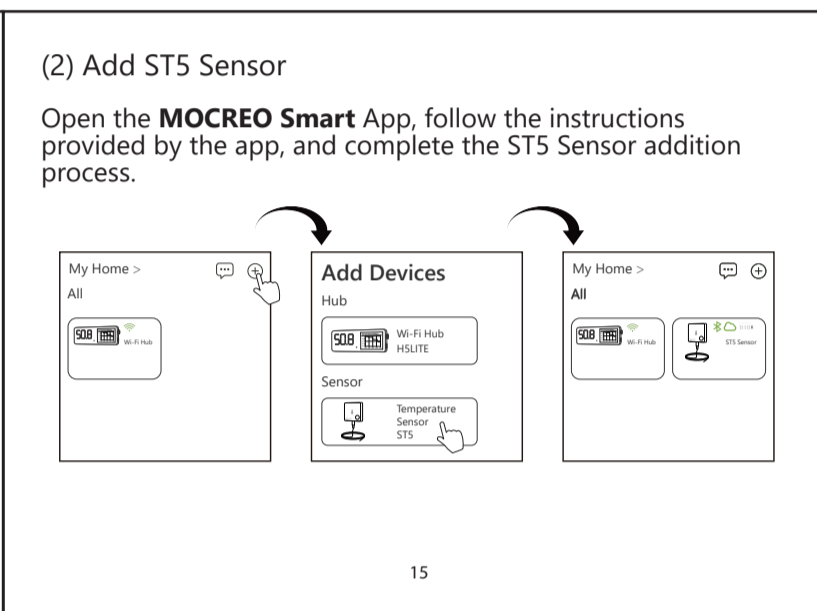
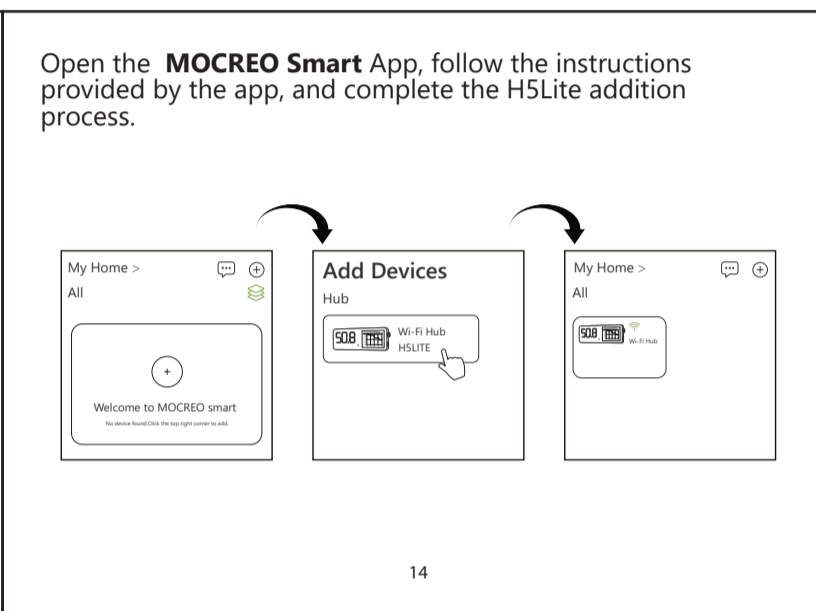
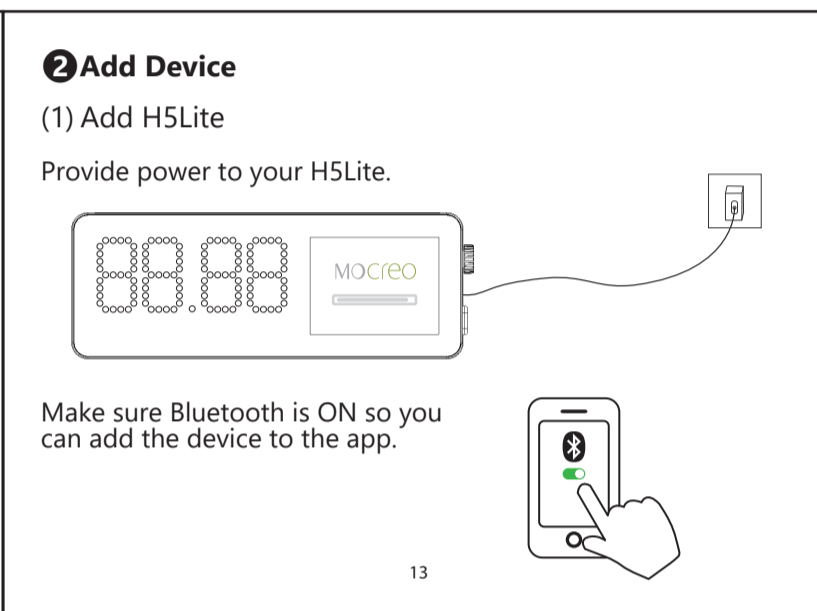
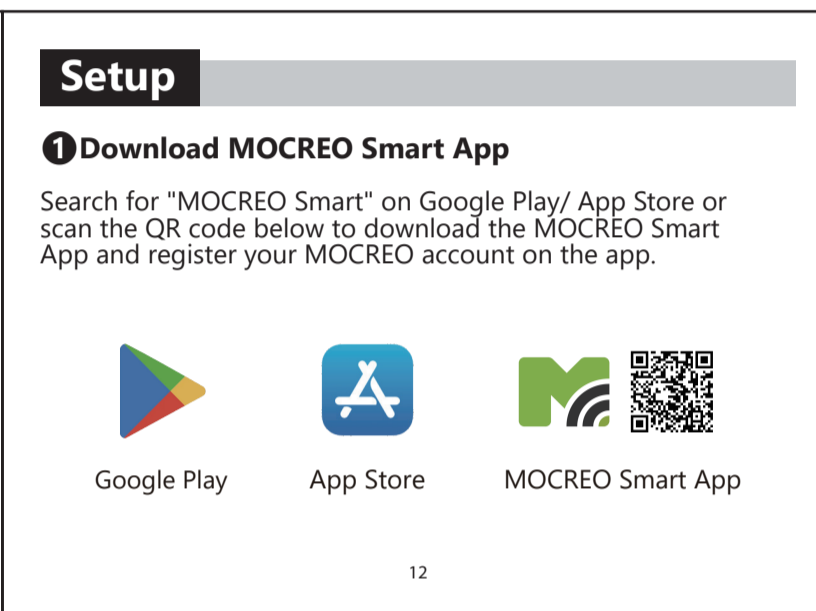
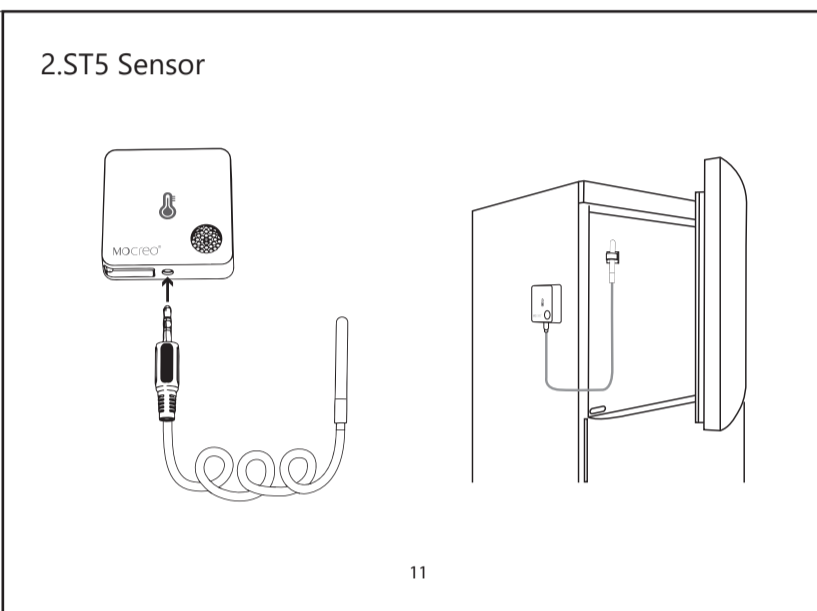
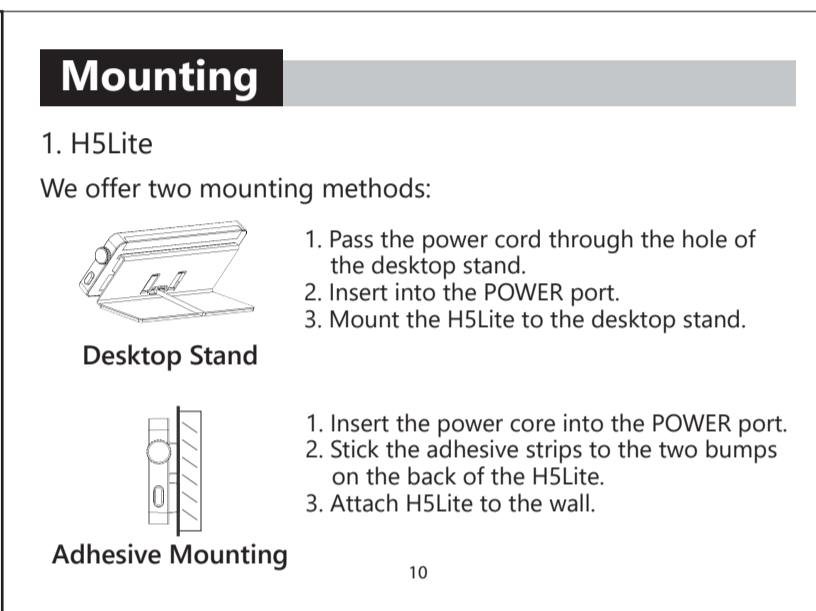
Button Functionality

Rotary Encoder: The rotary button allows moving the selection box up and down the screen, and pressing the button confirms the selection.

Side Button: Return to the previous interface.

Specifications

| Function | Ports | Specifications |
|--------------------------|---------------------|--|
| Button | Physical Button × 2 | Rotary Encoder × 1, Side Button × 1 |
| Display | LCD Display (W × H) | 2-inch, 320 × 240 IPS display, non touch |
| | LED Dot Matrix | 7-segment 4-digit clock display |
| Network | Wi-Fi | 2.4GHz (not support 5GHz Wi-Fi) |
| | Bluetooth | BLE 5.0 |
| Dimensions | Overall Dimensions | 5.01 × 0.54 × 1.80 in |
| Weight | Weight | 1.93 oz |
| Power | Type-C × 1 | DC 5V/1A |
| External Probe Interface | Type-C × 1 | Temperature Probe (Optional) |



Troubleshooting

1. H5Lite is offline

- (1) Verify the power supply.
- (2) Check the network status. Within the H5Lite LCD Display, troubleshoot according to the following path: Settings >>> Network & Internet >>> Network Diagnostics

2. Sensor is offline

Navigate to the H5Lite LCD screen, scroll the "Rotary Encoder" to the offline sensor's card, and enter the sensor troubleshooting page.

Customer Service

<https://doc.mocreo.com/>

+1 (530) 988-8608

help@mocreo.com

YouTube MOCREO Sensor

Search [MOCREO] on YouTube to watch the setup video tutorials.

Precautions and Disclaimer

Precautions for Use

To ensure the normal use of the product, please pay attention to the following situations:

- It is recommended to install the H5Lite in a high place.
- Do not expose the Device to high temperatures, humidity, or dusty environments.
- Do not place the Device near flammable materials.
- Do not put heavy objects on the Device or use it as a support.
- Children should not use the Device without adult supervision.

Disclaimer

The contents about how to use the product and the App guidance are only for reference; please refer to the actual situation for specific applications. If there is something different from the instructions during using the product, please contact MOCREO Support for updates.

This product is for detecting and monitoring only. MOCREO is not responsible for any property damage or other consequences of the use of this product.

FCC Statement

FCC ID (Sensor): 2A36D-ST4
FCC ID (H5Lite): 2BFZL-H5LT

This device complies with part 15 of the FCC Rules. Operation is subject to the following two conditions:

- This device may not cause harmful interference.
- This device must accept any interference received, including interference that may cause undesired operation.

Warning: Changes or modifications not expressly approved by the party responsible for compliance could void the user's authority to operate the equipment.

Note: This equipment has been tested and found to comply with the limits for a Class B digital device, according to part 15 of the FCC Rules.

These limits are designed to provide reasonable protection against harmful interference in a residential installation. This equipment generates uses and can radiate radio frequency energy and, if not installed and used in accordance with the instructions, may cause harmful interference to radio communications.

However, there is no guarantee that interference will not occur in a particular installation. If this equipment does cause harmful interference to radio or television reception, which can be determined by turning the equipment off and on, the user is encouraged to try to correct the interference by one or more of the following measures:

- Increase the separation between the equipment and the receiver.
- Connect the equipment to an outlet on a circuit different from that to which the receiver is connected.
- Consult the dealer or an experienced radio/TV technician for help.

Warranty

MOCREO products enjoy a 12-month limited warranty (starting from the date when the customer receives the product), which applies only to hardware components of the device that are not subject to accident, misuse, neglect, fire, or other external causes, alterations, or repair.

