

SUSSEX

Care & Maintenance



# Inside

SX

04

LUXPVD® Finishes

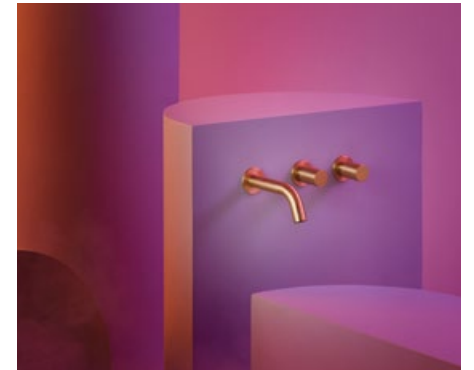
—  
Unique & luxurious



06

Electroplated Finishes

—  
Chrome, Matt, Brushed,  
Hard Metal



8

Living Finishes

—  
Brass/Copper, Rustic



10

Stainless Steel

—  
316 Marine Grade



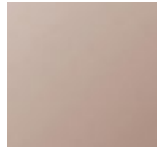
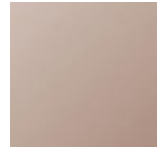
11

Paint Finishes

—  
6 vibrant colours



LUXPVD®

*Designs*  
FinishesLUXPVD®  
Matt Opium BlackLUXPVD®  
Brushed Smoke  
GunmetalLUXPVD®  
Brushed Oyster NickelLUXPVD®  
Platinum GoldLUXPVD®  
Brushed Platinum GoldLUXPVD®  
Pure GoldLUXPVD®  
Brushed Pure GoldLUXPVD®  
Silk Rose GoldLUXPVD®  
Brushed Silk Rose GoldLUXPVD®  
Brushed Rare Bronze

### Description/What to expect

A robust, durable and hard-wearing finish that is suitable for all indoor applications.  
An everlasting finish that is corrosion-resistant and easy to clean.

### Cleaning & Maintenance

- Using a soft cloth or dampened sponge, gently clean with soapy water, using a mild detergent. Rinse with clean water and towel dry.
- Clean regularly (weekly).
- Dry with a soft cloth after each use.
- For a deeper clean, use a 50:50 mix of vinegar and water. Wipe with a soft cloth and then rinse immediately with fresh water and gently towel-dry.
- For hard-to-get-to places, a soft plastic scrub brush can be used.

### Caution

- Do not use any chemical or abrasive cleaners eg. ammonia or bleach.
- Protect against exposure to tile or grout cleaners.
- Do not use an abrasive cleaner eg. Ajax or Jiff.
- Avoid using a scrubbing brush or scourer to clean.



## Electroplated

Standard Chrome, Matt & Brushed

*Design*  
Finishes



Electroplated  
Chrome



Electroplated  
Satin Chrome



Electroplated  
Matt Chrome

### Description/What to expect

A robust, durable and hard-wearing finish that is suitable for all indoor applications. An everlasting finish that is corrosion-resistant and easy to clean.

### Cleaning & Maintenance

- Using a soft cloth or dampened sponge, gently clean with soapy water, using a mild detergent. Rinse with clean water and towel dry.
- Clean regularly (weekly).
- Dry with a soft cloth after each use.
- For a deeper clean, use a 50:50 mix of vinegar and water. Wipe with a soft cloth and then rinse immediately with fresh water and gently towel-dry.
- For hard-to-get-to places, a soft plastic scrub brush can be used.

### Caution

- Do not use any chemical or abrasive cleaners eg. ammonia or bleach.
- Protect against exposure to tile or grout cleaners.
- Do not use an abrasive cleaner eg. Ajax or Jiff.
- Avoid using a scrubbing brush or scourer to clean.

## Electroplated

Hard Metal

Electroplated  
Finishes



Electroplated  
Black Chrome



Electroplated  
Brushed Black



Electroplated  
Matt Black



Electroplated  
Gunmetal Chrome



Electroplated  
Brushed Gunmetal



Electroplated  
Matt Gunmetal



Electroplated  
Nickel



Electroplated  
Brushed Nickel



Electroplated  
Matt Nickel

### Description/What to expect

Our hard metal finishes possess similar properties to Chrome, offering a durable, hard-wearing and easy-to-clean finish that will endure for many years. An array of different colours are available to suit a wide range of decor. These finishes require slightly more care and treatment than Chrome, mainly to sustain a long-lasting finish.

### Cleaning & Maintenance

- Using a soft cloth or dampened sponge, gently clean with soapy water, using a mild detergent. Rinse with clean water and towel dry.
- Clean regularly (weekly).
- Dry with a soft cloth after each use.
- For a deeper clean, use a 50:50 mix of vinegar and water. Wipe with a soft cloth and then rinse immediately with fresh water and gently towel-dry.
- For hard-to-get-to places, a soft plastic scrub brush can be used.

### Caution

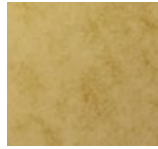
- Do not use any chemical or abrasive cleaners eg. ammonia or bleach.
- Protect against exposure to tile or grout cleaners.
- Do not use an abrasive cleaner eg. Ajax or Jiff.
- Avoid using a scrubbing brush or scourer to clean.

## Living Brass/Copper

*Designen*  
Finishes



Living  
Polished Brass



Living  
Tumbled Brass



Living  
Brushed Brass



Living  
Copper



Living  
Tumbled Copper

### Description/What to expect

A raw (unsealed) metal surface that is designed to tarnish and patina in an inconsistent manner over time. Time influences how this finish appears and it can often darken to a rustic appearance. Mineral build up may appear in the form of oxidisation spots and this finish is more susceptible to corrosion in coastal and high-mineralised areas.

### Cleaning & Maintenance

- Clean with warm, soapy water and a cotton cloth. Rinse with clean, fresh water. Towel dry.
- Clean regularly (weekly).
- You may use wax-based cleaning solutions.
- Wipe down after each use.
- For a deeper clean, use a 50:50 mix of white vinegar and water gently cleaning with a cotton cloth. Rinse with clean, fresh water and towel dry.
- A soft brush (eg. an old toothbrush) can be used for those hard-to-get-to places.

### Caution

- Do not use chemical cleaners or metal polish.
- Avoid heavy scrubbing when cleaning.
- Do not use a scrubbing brush/scourer.
- Avoid contact with acidic liquids or pastes. If acid-based liquids come in contact with finish, wash immediately and towel-dry.

## Living Rustic



Living  
Rustic Bronze



Living  
Rustic Iron

### Description/What to expect

Living rustic finishes are a pre-tarnished raw brass with a waxed surface to help preserve the finish. As a raw finish, the surface can patina and change in appearance further depending on its environment. Living Rustic finishes are susceptible to chemicals (ammonia, bleach) and a majority of other cleaning products. Applying such cleaning products could remove the tarnishing thus causing an undesired effect.

### Cleaning & Maintenance

- Clean with warm, soapy water and a cotton cloth. Rinse with clean, fresh water. Towel dry.
- Clean regularly (weekly).
- Wipe down with a dry cloth after each use.
- Use a soft brush (eg. an old toothbrush) to reach the hard-to-get-to places.
- Use "renaissance" wax to preserve the finish. Apply a small amount of wax on a soft cloth and gently rub all over the surface. After application, gently clean as per first cleaning instruction.
- A soft brush (eg. an old toothbrush) can be used for those hard-to-get-to places.

### Caution

- Avoid the use of chemical cleaners, such as ammonia or bleach.
- Avoid using metal polish.
- Do not use chemical cleaners or metal polish.
- Avoid heavy scrubbing when cleaning as this can alter the surface finish.
- Do not use a scrubbing brush/scourer.
- Avoid contact with acidic liquids or pastes. If acid-based liquids come in contact with finish, wash immediately and towel-dry.

# Stainless Steel

316 Marine Grade



Stainless Steel  
316 Marine Grade

## Description/What to expect

316 Marine-grade Stainless Steel is an unsealed, robust material designed for outdoor use, providing many years of usage in a wide range of environments.

As with any Stainless Steel products, exposure to hard water and/or coastal environments can cause "tea-staining" (surface discolouration).

## Cleaning & Protection

- Using fresh water and a mild detergent, wash with a soft cloth or sponge. Rinse with clean, fresh water and towel-dry.
- Clean regularly (weekly).
- For stubborn stains and/or tea-staining, a nylon scourer can be used with a metal surface cleaner (Note: for brushed finishes, clean with scourer in same direction as brush lines).

## How to Minimise "Tea-Staining"

- Thoroughly clean surface.
- Apply spray protectant 'NanoCoat Metal 2 in 1'.
- Use protectant regularly.

## Caution

- Do not use chemical cleaners containing ammonia or bleach.
- Do not use steel scouring pads.

Design  
Finishes

# Paint



Paint  
Matt Red



Paint  
Matt Orange



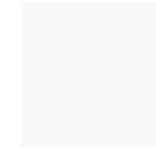
Paint  
Matt Yellow



Paint  
Matt Green



Paint  
Matt Blue



Paint  
Matt White

## Description/What to expect

Our painted finishes are similar to automotive paints that are designed to be wearable, durable and easy to clean.

Treated well and with regular maintenance, painted finishes can last for many years.

## Cleaning & Maintenance

- Using a soft cloth or dampened sponge, gently clean with soapy water, using a mild detergent. Rinse with clean water and towel dry.
- Regular cleaning (weekly).
- Dry with a soft cloth after each use.
- For a deeper clean, use a 50:50 mix of vinegar and water. Wipe with a soft cloth and then rinse immediately with fresh water and gently towel-dry.

## Caution

- Do not use any chemical or abrasive cleaners eg. ammonia or bleach.
- Avoid contact with sharp objects (eg. rings, cutlery, kitchen utensils). **Note:** sharp objects could chip or scratch the surface.
- Protect against exposure to tile or grout cleaners.
- Do not use an abrasive cleaner eg. Ajax or Jiff.
- Avoid the use of kitchen scourers or brushes for cleaning.

The logo consists of the letters 'S' and 'X' in a white, serif font, positioned centrally on a dark blue background.

MAKING IT RIGHT  
ENTIRELY IN  
AUSTRALIA  
SINCE 1983