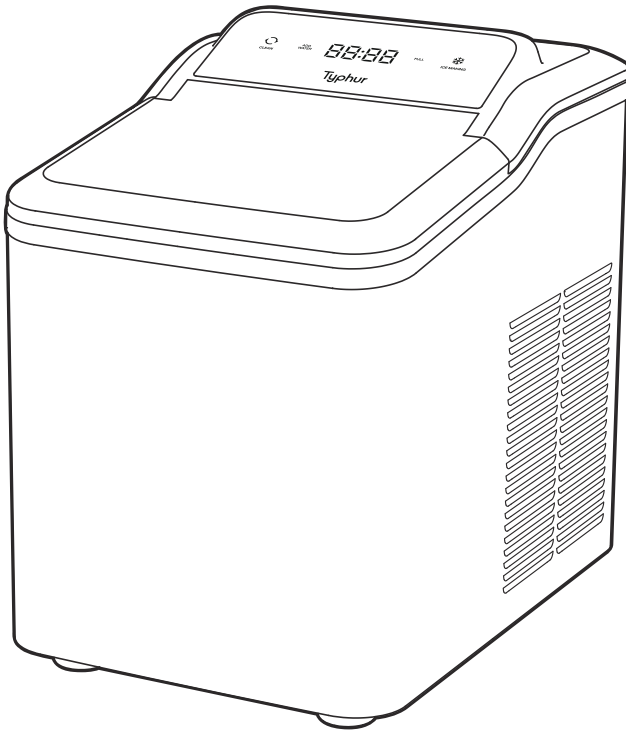


# Typhur

## Fast Nugget Ice Maker

# User Manual

v1.4



# Contents

Safety Precautions .....	01
Product Introduction & Functions .....	03
Cleaning and Maintenance .....	06
Product Specifications .....	09
Troubleshooting .....	09
Certifications .....	11
Support .....	11

# Safety Precautions

---

Please read all safety instructions carefully before using the ice maker. Failure to follow these precautions could result in electric shock, fire, personal injury, or property damage.

To reduce the risk of injury or damage, follow these safety precautions:

## 1. Power Requirements

The voltage from the power outlet must match the specifications listed on the appliance's nameplate.

## 2. Grounding

This appliance must be properly grounded. **Do not** use it without a grounding connection.

## 3. Use of Extension Cords

Using an extension cord may cause overheating and increase the risk of fire. If one must be used:

- a) Only use an extension cord with a grounding plug.
- b) The marked electrical rating of the extension cord must be equal to or greater than the rating of the appliance.

## 4. Damaged Components

**Do not** operate the appliance if the power cord, plug, or any other component is damaged.

## 5. Cleaning

Always unplug the unit before cleaning. Never immerse any part of the unit in water.

## 6. Adult Use Only

Only responsible and capable adults should operate the ice maker.

## 7. Power Cord Safety

**Do not** place the power cord where it can be pulled by children or become a tripping hazard.

## 8. Child Safety

Keep children away from the unit during operation. Never leave the ice maker unattended around children.

## 9. Water Source

**Do not** use water that is micro-biologically unsafe or of unknown quality.

## 10. Evaporator Warning

**Do not** touch the evaporator or ice-making components while the unit is operating.

## 11. Wet Hands Hazard

**Do not** plug in or unplug the unit with wet hands.

## 12. Proper Installation

Install and place the ice maker according to the installation instructions before use.

## 13. Flammable Materials

**Do not** store or use flammable liquids or vapors near the unit.

## 14. No Disassembly

**Do not** attempt to disassemble, repair, modify, or replace any part of the unit without proper authorization. Repairs should be performed by qualified personnel only.

## **⚠ WARNING: FIRE OR EXPLOSION HAZARD – FLAMMABLE REFRIGERANT**

**15. Do not** damage the refrigerant tubing while handling, installing, or operating the unit.

**16.** Dispose of the unit in accordance with Federal, State, and Local Regulations. Contact your local waste authority for environmentally safe disposal.

**17.** Keep ventilation openings around the unit clear and unobstructed.

**18. Do not** place the unit near heat sources such as stoves or ovens.

**19.** Ensure a minimum of 6 inches (150mm) of clearance on all sides and the back of the unit for proper air circulation.

**20. Do not** place the unit in direct sunlight.

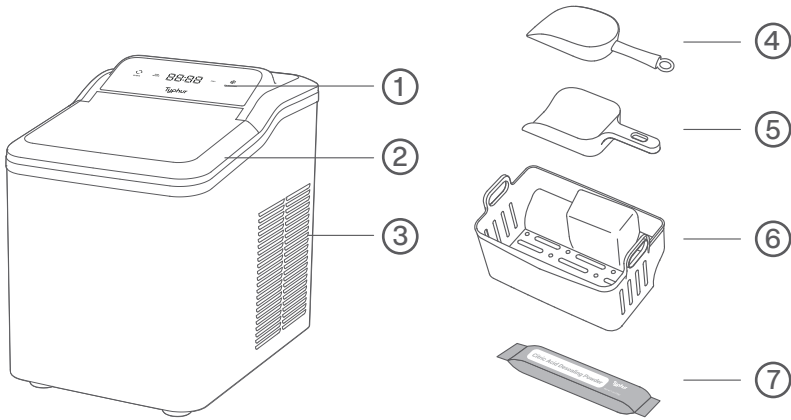
**21.** If refrigerant leakage is suspected, immediately evacuate the area and ventilate thoroughly. **Do not** use open flames, electrical switches, or devices that may create sparks.

# SAVE THESE INSTRUCTIONS

# Product Introduction & Functions

---

## 3.1 Product Introduction

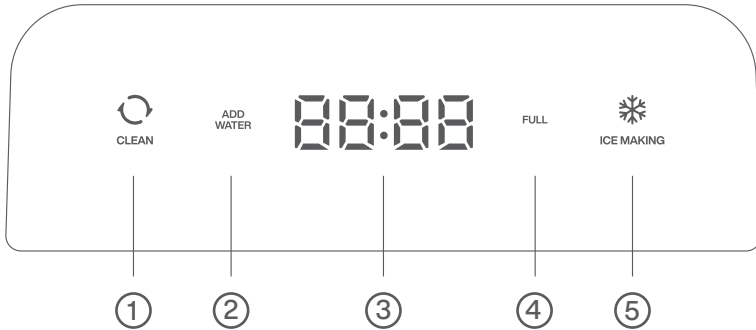


- ① Control Panel
- ② Transparent lid
- ③ Air Vent
- ④ Ice Scoop 1
- ⑤ Ice Scoop 2
- ⑥ Ice Basket
- ⑦ Citric Acid Descaling Powder

## 3.2 Before First Use

1. **Transportation Warning: Do not** tilt the unit more than 45° or turn it upside down during transport, as this may damage the compressor or sealing system.
2. Remove all packaging materials from the unit.
3. Inspect the unit, power cord, and plug for any visible damage after unpacking.
4. Place the unit on a level surface with **at least 150 mm (6 inches)** of clearance on all sides for proper ventilation.
5. Keep it at least **1 meter (3 feet)** away from ovens, radiators, or other heat sources.
6. After positioning the unit, leave the transparent lid fully open and allow it to stand for **at least 2 hours** before first use.
7. For the best taste and texture, use the ice cubes promptly after production.
8. Ensure that the household power supply matches the unit's rated voltage: **110-120V~, 60Hz.**

### 3.3 Control Panel Introduction



Status/Mode	Panel Display	Operation/Response
① Cleaning Mode	<b>CLEAN</b> light on, <b>ICE MAKING</b> light off; display shows <b>7:00</b> countdown	<ul style="list-style-type: none"> <li>Runs a 7-minute cleaning cycle with water circulation.</li> <li>Press any button to stop at any time.</li> <li>After cleaning, unit returns to <b>Standby Mode</b>.</li> <li>To make ice again, press <b>ICE MAKING</b> while in Standby.</li> </ul>
② ADD water Mode	<b>ADD WATER</b> icon stays on	<ul style="list-style-type: none"> <li>Water level is too low or empty.</li> <li>Refill reservoir with clean water up to the <b>MAX</b> line.</li> <li>After refilling, press <b>ICE MAKING</b> to restart.</li> </ul>
③ Standby Mode	<b>ICE MAKING</b> and <b>CLEAN</b> lights are off (dim)	<ul style="list-style-type: none"> <li>The appliance is powered on and ready.</li> <li>From Standby, press <b>ICE MAKING</b> to start making ice.</li> <li>Or press <b>CLEAN</b> to begin a cleaning cycle.</li> </ul>
④ Full Mode	<b>FULL</b> icon stays on	<ul style="list-style-type: none"> <li>The ice basket is full.</li> <li>Remove ice to continue operation.</li> <li>The unit restarts automatically once ice level drops below the sensor.</li> </ul>
⑤ Ice Making Mode	<b>ICE MAKING</b> light on, <b>CLEAN</b> light off; rotating animation on display	<ul style="list-style-type: none"> <li>Actively producing ice.</li> <li>Automatically pauses when basket is full.</li> <li>After closing the lid, wait 10 seconds before pressing <b>ICE MAKING</b> again if needed.</li> </ul>

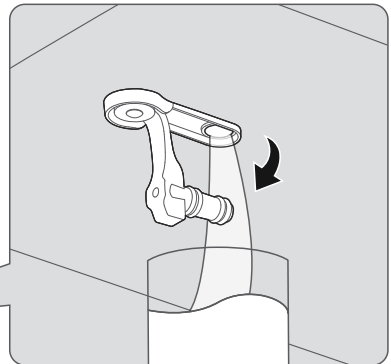
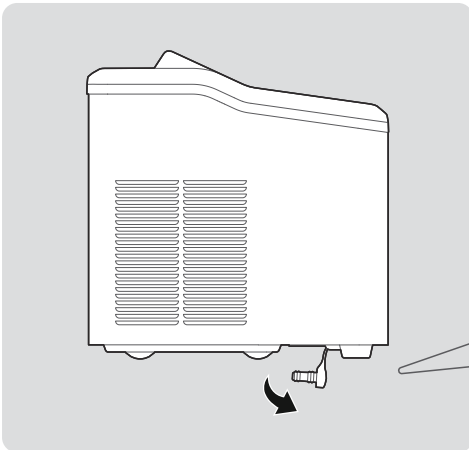
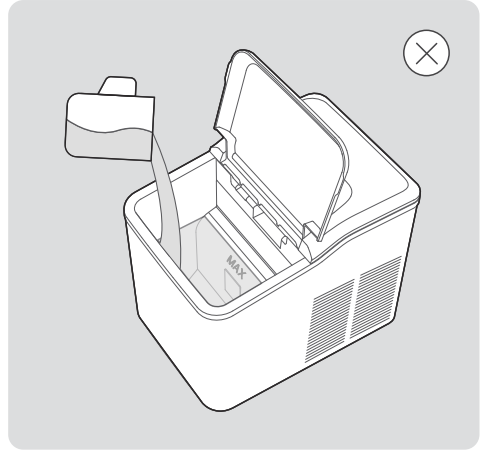
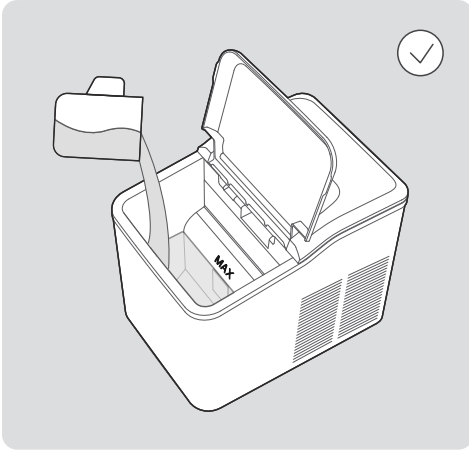
# How to Make Ice Cubes

## Step 1: Fill Water

- Open the transparent lid, then remove the ice basket.
- Fill the water reservoir up to the MAX level mark (do not overfill).
- If the reservoir is overfilled, remove the **drain plug** on the bottom panel to drain the excess water.
- Close the lid securely.

## Step 2: Start the Machine

- Plug the power cord into a grounded **110-120V~ / 60Hz** outlet.
- Press the ICE MAKING button to begin the ice-making process.



# Cleaning and Maintenance

---

## 4.1 Clean

### Cleaning Procedure

#### Initiation

- In **Standby Mode**, press the “**CLEAN**” button to activate the cleaning cycle.  
Indicator Status
- “**CLEAN**” indicator illuminates steadily.
- “**ICE MAKING**” indicator turns off.
- Digital display shows **7:00** countdown.

#### Operation Process

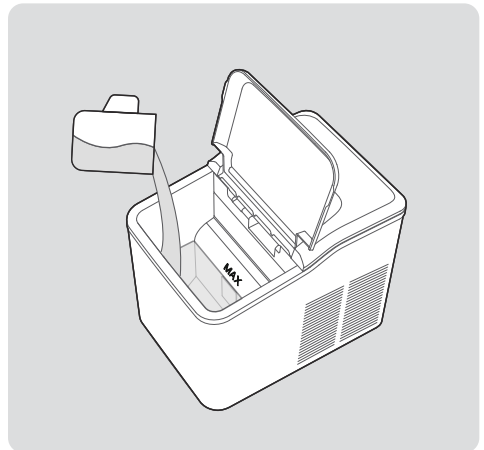
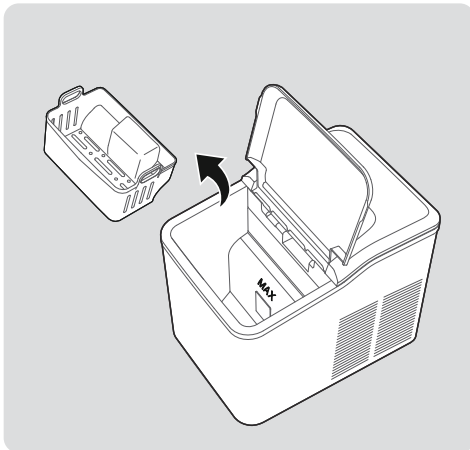
- Use plain water, or prepare the cleaning solution as needed according to the usage instructions provided on the packaging of the citric acid descaling powder.
- Pump and agitator motors **operate simultaneously**.
- Water **circulates continuously** between lower and upper tanks.

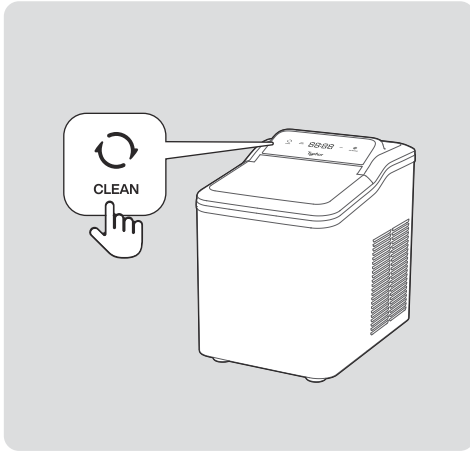
#### Completion

- Unit **automatically returns** to standby mode after 7 minutes.
- Remove the drain plug on the bottom panel to drain the water.
- Close the lid securely.



**NOTE:** For deep cleaning or descaling, repeat the cycle with fresh solution. Avoid using harsh chemicals. Always rinse with clean water before making ice again.





## 4.2 Cleaning and Maintenance

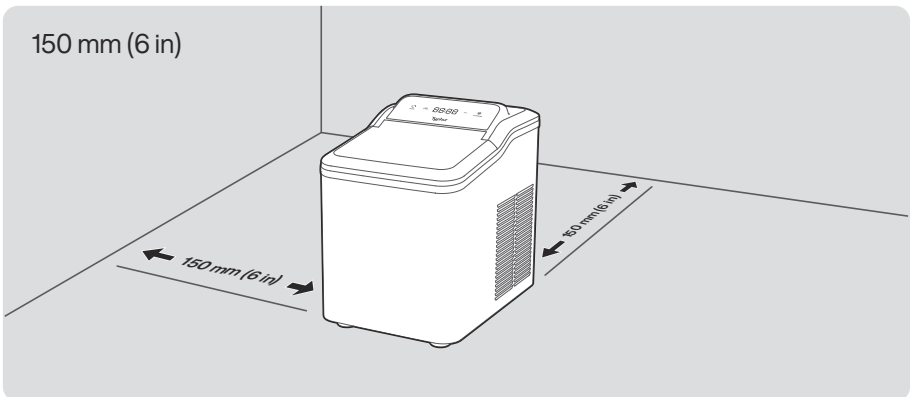
### Regular Cleaning

1. Clean the interior with citric acid descaling powder (follow the instructions on the package).
2. Repeat the cleaning procedure.
3. Rinse thoroughly with clean water before reuse.

**CAUTION:** Never use harsh chemicals, acids, gasoline, or petroleum-based cleaners. These may damage the unit or contaminate the ice.

### Ventilation & Defrosting

- Maintain **at least 150 mm (6 in)** of clearance around the unit for proper airflow.
- Use only manufacturer-approved methods to defrost.



## After Extended Non-Use

1. If the “**ADD WATER**” icon stays on (airlock issue):
  - Press **ICE MAKING** to switch to Standby.
  - Restart the ice-making cycle.
2. If unused for more than 24 hours:
  - Drain all water and dry the interior completely.
  - Before reuse, run a full cleaning cycle with fresh potable water.

## Compressor Protection

- After a power failure, water shortage, or full basket, the compressor will delay for 3 minutes before restarting. This protects the unit from damage.

## Water Quality Requirements

### **WARNING: HEALTH RISK**

- Replace the reservoir water every 24 hours to prevent bacterial growth.
- Use **ONLY** NSF/ANSI 61-certified potable water.
- Before initial use or after long-term storage, run a full cleaning cycle with fresh water to ensure sanitary conditions.

# Product Specifications

---

Model	CM03
Rated Voltage/Frequency	110-120 V~ / 60 Hz
Ice-Making Current	1.8 A
Ice Storage Capacity	1.4 L
Water Tank Capacity	1.5 L
Material	Stainless Steel
Product Size	12.08× 8.98 × 12.36 inch (307*228.3*314mm)

## Troubleshooting

---

### WARNING

Power loss during operation (from unplugging or manual shutdown) cause ice fragments to become trapped in the evaporator. Solution: Restart the ice maker normally.

Problem	Possible Causes	Solution
Sandy Ice Formation	<ol style="list-style-type: none"><li>1. User uses hard water or water containing impurities.</li><li>2. Refrigeration system operates unstably.</li><li>3. Internal equipment malfunction.</li></ol>	<ol style="list-style-type: none"><li>1. Replace with purified water.</li><li>2. Conduct continuous testing for no less than 30 minutes.</li><li>3. If the fault persists, contact customer service.</li></ol>
Excessive Ice Melting	<ol style="list-style-type: none"><li>1. Nugget ice has a soft texture, with a faster melting rate than cube ice and bullet ice (normal equipment characteristic).</li><li>2. Ice Basket zone has insufficient refrigeration and heat preservation performance.</li></ol>	This is a normal phenomenon. It is recommended to use the ice promptly or transfer it to a refrigerator for cold storage.
Water Stains on/Inside the Unit	Each unit undergoes a full-function test with clean water before factory shipment; residual small amount of water is normal post-test residue.	This is a normal condition, and the unit can be put into normal use.

Problem	Possible Causes	Solution
Noise During Ice-Making (50-60dB)	Routine operational actions (e.g., heat dissipation, water pump operation, ice shedding) during ice-making generate noise within this decibel range (normal operational noise of the unit)	This is normal unit operation; no additional action is required.
Louder Noise During Ice-Making	System abnormality, possibly caused by: abnormal fan operation, evaporator blocked by ice cubes, internal scaling, abnormal compressor operation.	<ol style="list-style-type: none"> <li>1. Ensure the ice maker is placed vertically on a flat, clean surface, with no less than 6 inches of space reserved on both sides and the back of the unit.</li> <li>2. Check if the rear fan is blocked by foreign objects; clean the blockage promptly if present.</li> <li>3. Run the unit's self-cleaning cycle to remove frozen components; it is recommended to use a descaling agent for deep cleaning.</li> </ol>
Water Leakage	<ol style="list-style-type: none"> <li>1. Bottom drain valve is not fully tightened.</li> <li>2. Internal pipeline malfunction.</li> </ol>	Retighten the bottom drain valve; if the water leakage fault persists, contact customer service.
“ADD WATER” Icon Remains Illuminated	Insufficient water in the tank during the ice-making cycle.	<ol style="list-style-type: none"> <li>1. Fill the lower water tank up to the MAX water level mark.</li> <li>2. Press the “ICE MAKING” function button to switch to standby mode.</li> <li>3. Press the “ICE MAKING” function button again to restart the ice-making cycle.</li> </ol>
Unit Powered On But Fails to Produce Ice Normally	<ol style="list-style-type: none"> <li>1. Refrigeration system has not stabilized.</li> <li>2. Internal equipment malfunction.</li> </ol>	Let the unit stand for at least 2 hours, then reconnect the power supply and conduct continuous testing for more than 30 minutes; if the fault persists, contact customer service.
All Indicator Lights Flash Simultaneously	<ol style="list-style-type: none"> <li>1. Evaporator is jammed by ice cubes internally.</li> <li>2. Internal equipment malfunction.</li> </ol>	Let the unit stand for at least 2 hours, then reconnect the power supply and conduct continuous testing for more than 30 minutes; if the fault persists, contact customer service.
E1 Error	Internal unit malfunction.	Please contact customer service for assistance.

# Certifications

---

Product Name: Typhur Fast Nugget Ice Maker

Model Number: CM03

Supplier's Name: Typhur Inc.

Supplier's Address (USA): 2860 Zanker Road, Suite 105, San Jose, CA 95134

Supplier's Email: allen.f@typhur.com



This symbol, affixed to the product or its packaging, indicates that the product must not be processed with household waste. It must be brought to an electric or electronic waste collection point for recycling and disposal. By ensuring the appropriate disposal of this product you also help in preventing potentially negative consequences for the environment and human health. The recycling of materials helps preserve our natural resources. For further information regarding the recycling of this product, please contact your municipality, local waste disposal centre or the store where the product was purchased.

# Support

---

Please contact our **Customer Support Team** if you have any questions.

 : 1(888) 838-6563(USA)

 : support@typhur.com

 : support.typhur.com

## Typhur Privacy Statement

We value your privacy and personal data rights, and we, Typhur Inc. is the entity responsible for the collection, use, and disclosure of information under our Privacy Statement. For more details, please visit <https://www.typhur.com/privacy-statement>.

## Terms of Service

For details about Typhur Terms of Service, please visit <https://www.typhur.com/terms-of-service>

## Refund & Return Policy

Typhur has a 30 calendar day hassle-free return policy. For more details please visit <https://www.typhur.com/refund-and-return>

## Warranty

Full details are stated in Typhur's warranty policy at <https://www.typhur.com/warranty>

# Typhur

Model: CM03