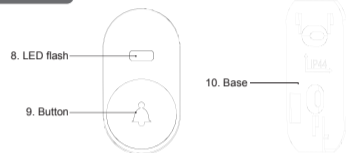


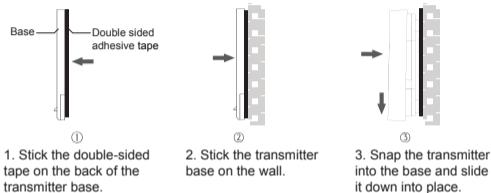
PRODUCT STRUCTURE

Transmitter

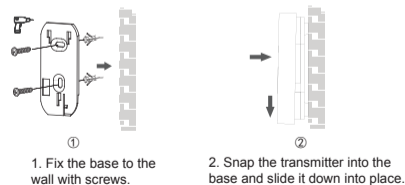


INSTALLATION AND DISASSEMBLY

Method 1: Double-sided tape installation



Method 2: Screw installation



PRODUCT SPECIFICATION



Model: 90140USA
FCC ID:RHT107
Frequency: 433.92MHz
LED flash: blue
Working temperature: -10°C~55°C
Operating voltage: press to generate electricity
Transmit power: < 5dBm

PRECAUTIONS

FCC Statement
This equipment has been tested and found to comply with the limits for a Class B digital device, pursuant to part 15 of the FCC Rules. These limits are designed to provide reasonable protection against harmful interference in a residential installation. This equipment generates, uses and can radiate radio frequency energy and, if not installed and used in accordance with the instructions, may cause harmful interference to radio communications. However, there is no guarantee that interference will not occur in a particular installation. If this equipment does cause harmful interference to radio or television reception, which can be determined by turning the equipment off and on, the user is encouraged to try to correct the interference by one or more of the following measures:

- Reorient or relocate the receiving antenna.
- Increase the separation between the equipment and receiver.
- Connect the equipment into an outlet on a circuit different from that to which the receiver is connected.
- Consult the dealer or an experienced radio/TV technician for help.

Caution: Any changes or modifications to this device not explicitly approved by manufacturer could void your authority to operate this equipment.

This device complies with part 15 of the FCC Rules. Operation is subject to the following two conditions: (1) This device may not cause harmful interference, and (2) this device must accept any interference received, including interference that may cause undesired operation.

RF Exposure Information
The device has been evaluated to meet general RF exposure requirement.
The device can be used in portable exposure condition, compliance with exposure requirements.
This equipment should be installed and operated with minimum distance 0 mm between the radiator & your body.



PACKAGING CONTENT

- 1 × Transmitter
- 1 × Double-sided adhesive tape
- 1 × User Manual
- 2 × Screws
- 2 × Expansion Tubes

PRECAUTIONS

Before installation:

1. The wireless signal is easily affected by metals, walls, concrete, etc. (such as mobile phones under the shielding effect of elevators, etc.), the signal is weakened.
2. Open the package and consider using double-sided tape or screws to fix the transmitter.
3. Avoid installing the transmitter on a metal door frame, otherwise it will affect the distance.
4. Keep the receiver as far away as possible from induction cookers, televisions and other places where there are magnetic fields or signal interference sources.
5. The closer the transmitter and receiver, the better the signal.



Transmitter User Manual

Model: 90107USA