



**Questions, problems, missing parts?**

Before returning to your retailer, call our customer service at 1-800-887-6326  
Monday – Friday 9:00 a.m. – 5:00 p.m. CST

**PACKAGE CONTENTS**



**HARDWARE CONTENTS** Note: Hardware not shown actual size.

AA		Mounting Strap X1	FF		Hex Nut X1
BB		Mounting Screw X2	GG		Metal Pad X1
CC		Long Screw X2	HH		Decorative Cap X1
DD		Wire Connector X3	II		Finial X1
EE		Threaded Pipe X1			

## ⚠ SAFETY INFORMATION

Please read and understand this entire manual before attempting to assemble, operate or install the product.

### WARNING

- Turn off electricity at main fuse box (or circuit breaker box) before beginning installation by removing fuse (or switching off circuit breaker).
- Be careful not to damage or cut the wire insulation (covering) during fixture installation. Do not permit wires to contact any surface having a sharp edge. To do so may damage or cut the wire insulation, which could cause serious injury or death from electric shock.

### CAUTION

- All electrical connections must be in agreement with local codes, ordinances or the national electric code (NEC). Contact your municipal building department to learn about your local codes, permits and/or inspections.
- Risk of fire – most dwellings built before 1985 have supply wire rated for 140°F/60°C. Consult a qualified electrician before installation.
- Do not connect this fixture to an electrical system that does not provide a means for equipment grounding. Never use a fixture in a two-wire system that is not grounded. If you are not sure your lighting system has a grounding means, do not attempt to install this fixture. Contact a qualified, licensed electrician for information with regards to proper grounding methods as required by the local electrical code in your area.

## PREPARATION

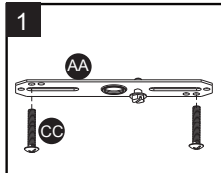
Before beginning assembly, installation or operation of product, make sure all parts are present. Compare parts with package contents list and diagram on previous page. If any part is missing or damaged, do not attempt to assemble, install or operate the product. Contact customer service for replacement parts.

Tools Required for Assembly (not included): Slotted Screwdriver, Phillips Screwdriver, Pliers, Electrical Tape, Wire Cutters, Safety Glasses, Ladder, Wire Stripper.

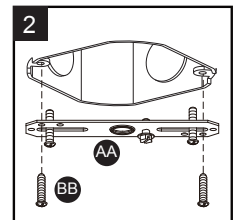
## ASSEMBLY INSTRUCTIONS

Turn off the power at fuse or circuit box.

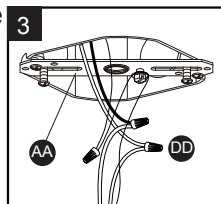
1. Attach two long screws(CC) to the holes on the mounting strap(AA). Thread them in part way: 2 to 3 turns only.



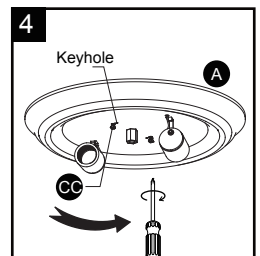
2. Attach the mounting strap (AA) to the outlet box using two mounting screws (BB).



3. Connect fixture black wires to house black wire and fixture white wires to house white wire using wire connectors (DD) provided. Connect the copper wire or green / yellow wire from the light fixture to the mounting strap (AA) by securing it with the preinstalled green ground screw, then connect it to the house ground wire with wire connector (DD). Tuck all the wires into outlet box.

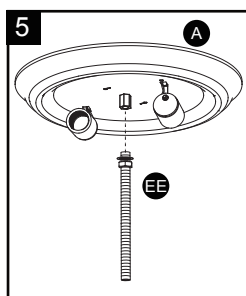


4. Attach the ceiling pan (A) to the mounting strap (AA) by inserting two long screws (CC) heads into the keyholes, rotate the ceiling pan (A) until it is locked in place, then secure the long screws (CC) tightly.



5. Attach the threaded pipe (EE) into the coupling of the ceiling (A) and secure the preinstalled washer and hex nut.

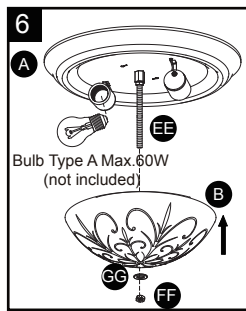
**NOTE: Depth of threaded pipe may need to be adjusted to properly fit glass shade, decorative cap and finial.**



## ASSEMBLY INSTRUCTIONS (continued)

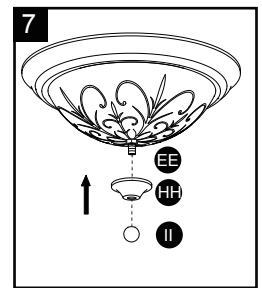
6. Install 2 X 60W Max. medium base bulbs (Type A, not included). **See relamping label at socket area or packaging for maximum wattage allowed.**

Attach the glass shade (B) to the ceiling pan (A) by inserting the threaded pipe (EE) through the hole of the glass shade, and then secure it with a metal pad (GG) and a hex nut (FF).



7. Attach the decorative cap (HH) to the end of threaded pipe (EE), then secure it with the finial (II).

Turn on the power at fuse or circuit box.



The following parts are available for reorder if damaged or missing. Call our toll-free at 1-800-887-6326.

### Spare Parts List:

<b>AA</b>		<b>Mounting Strap</b> X1	<b>FF</b>		<b>Hex Nut</b> X1
<b>BB</b>		<b>Mounting Screw</b> X2	<b>GG</b>		<b>Metal Pad</b> X1
<b>CC</b>		<b>Long Screw</b> X2	<b>HH</b>		<b>Decorative Cap</b> X1
<b>DD</b>		<b>Wire Connector</b> X3	<b>II</b>		<b>Finial</b> X1
<b>EE</b>		<b>Threaded Pipe</b> X1			

→ **Assembly Kit**  
4704MM (1 SET)



**B** **Glass Shade**  
9424FC

## CARE AND MAINTENANCE

- To clean, turn off and wipe with a damp, non-abrasive cloth.

## TROUBLESHOOTING

### 1) The light does not work:

- Make sure the wall switch and circuit breaker are on.
- Make sure the wiring is correct.

### 2) Fuse blows or circuit trips when light is turned on.

Check for crossed wires, ensure wiring is correct.

**If unable to fix any of the above issues, please consult a certified electrician.**

**FIVE-YEAR LIMITED WARRANTY:** If, during normal use, this PATRIOT LIGHTING® lighting fixture breaks or fails due to a defect in material workmanship within five (5) years from the date of original purchase, simply bring this lighting fixture with the original sales receipt back to your nearest MENARDS® retail store. At its discretion, PATRIOT LIGHTING® agrees to have the product or any defective part(s) repaired or replaced with the same or similar PATRIOT LIGHTING® product or part free of charge, within the stated warranty period, when returned by the original purchaser with original sales receipt. This warranty; (1) excludes expendable parts including but not limited to light bulbs; (2) does not cover damage that has resulted from abuse or misuse; and (3) does not cover any losses, labor, injuries to persons/property or costs. This warranty does give you specific legal rights and you may have other rights, which vary from state to state.



### Questions, problems, missing parts?

Before returning to your retailer, call our customer service at 1-800-887-6326  
Monday – Friday 9:00 a.m. – 5:00 p.m. CST