

Dimension: 70 x 135 mm

SOFTWARE DOWNLOAD

TÉLÉCHARGEMENT DE LOGICIEL | DESCARGA DE SOFTWARE | SOFTWARE HERUNTERLADEN | SCARICA SOFTWARE | YAZILIMI İNDİR | ŚCIAĞANIE OPROGRAMOWANIA | DOWNLOAD DE SOFTWARE | ЗАГРУЗКА ПРОГРАММНОГО ОБЕСПЕЧЕНИЯ | ソフトウェアのダウンロード | 소프트웨어 다운로드 | 軟體下載 | 软件下载

• Download the DisplayLink software on your host device by visiting www.satechi.net/display-link

• Téléchargez le logiciel DisplayLink sur votre appareil hôte en visitant le site suivant www.satechi.net/display-link

• Descargue el software DisplayLink en su dispositivo host visitando www.satechi.net/display-link

• Laden Sie die DisplayLink-Software auf Ihr Host-Gerät herunter, indem Sie www.satechi.net/display-link besuchen.

• Scaricare il software DisplayLink sul dispositivo host visitando il sito www.satechi.net/display-link

• DisplayLink yazılımını www.satechi.net/display-link adresini ziyaret ederek ana cihazınıza indirin.

• Pobierz oprogramowanie DisplayLink na swoje urządzenie hosta, odwiedzając stronę www.satechi.net/display-link

• Descarregue o software DisplayLink para o seu dispositivo anfitrião visitando www.satechi.net/display-link

• Загрузите программное обеспечение DisplayLink на ваше устройство, посетив сайт www.satechi.net/display-link

• www.satechi.net/display-link にアクセスして、ホスト機器に DisplayLink ソフトウェアをダウンロードしてください。

• www.satechi.net/display-link 에서 호스트 장치에 DisplayLink 소프트웨어를 다운로드하세요.

• 在主機設備上下載 DisplayLink 軟體，請造訪 www.satechi.net/display-link

• 在主机设备上下载 DisplayLink 软件，请访问 www.satechi.net/display-link

IMPORTANT

İMPORTANT | IMPORTANTE | WICHTIG | IMPORTANTE | ÖNEMLİ | WAŻNY | IMPORTANTE | ВАЖНО | 重要 | 중요한 | 重要訊息 | 重要信息

• Thunderbolt™ 4 supports USB4 and is downwards compatible with Thunderbolt™ 3 and other USB-C peripherals.

• Thunderbolt™ 4 prend en charge l'USB4 et est compatible à la baisse avec Thunderbolt™ 3 et d'autres périphériques USB-C.

• Thunderbolt™ 4 admite USB4 y es compatible a la baja con Thunderbolt™ 3 y otros periféricos USB-C.

• Thunderbolt™ 4 unterstützt USB4 und ist abwärtskompatibel mit Thunderbolt™ 3 und anderen USB-C-Peripheriegeräten.

• Thunderbolt™ 4 supporta USB4 ed è compatibile con Thunderbolt™ 3 e con altre periferiche USB-C.

• Thunderbolt™ 4, USB4'ü destekler ve Thunderbolt™ 3 ve diğer USB-C çevre birimleriyle aşağıya uyumludur.

• Thunderbolt™ 4 obsługuje USB4 i jest kompatybilny w dół z Thunderbolt™ 3 i innymi urządzeniami peryferyjnymi USB-C.

• O Thunderbolt™ 4 suporta USB4 e é compatível com o Thunderbolt™ 3 e outros periféricos USB-C.

• Thunderbolt™ 4 поддерживает интерфейс USB4 и совместим с Thunderbolt™ 3 и другими периферийными устройствами USB-C по нисходящей.

• Thunderbolt™ 4はUSB4를サポートし、Thunderbolt™ 3およびその他のUSB-C周辺機器との下位互換性があります。

• Thunderbolt™ 4는 USB4를 지원하며 Thunderbolt™ 3 및 기타 USB-C 주변기와 하위 호환됩니다.

• Thunderbolt™ 4 支援 USB4，向下相容於 Thunderbolt™ 3 和其他 USB-C 週邊裝置。

• Thunderbolt™ 4 支持 USB4，向下兼容 Thunderbolt™ 3 和其他 USB-C 外围设备。

• DisplayLink Manager must be installed and running on host device for full dock functionality.

• Le gestionnaire DisplayLink doit être installé et actif sur l'appareil hôte pour une fonctionnalité complète de la station d'accueil.

• DisplayLink Manager debe estar instalado y ejecutándose en el dispositivo host para la funcionalidad completa de la estación.

• Zur Gewähr der vollen Docking-Funktionalität muss DisplayLink Manager auf dem Host-Gerät installiert sein und laufen.

• Occorre installare ed eseguire DisplayLink Manager sul dispositivo host per avere la piena funzionalità della dock.

• Tam dock işlevselliği için DisplayLink Manager ana cihaza yüklenmiş ve çalışıyor olmalıdır.

• Dla pełnej funkcjonalności stacji dokującej, na urządzeniu hosta należy zainstalować i uruchomić DisplayLink Manager.

• O DisplayLink Manager deve estar instalado e em execução no dispositivo host para obter a funcionalidade completa da estação.

• Для обеспечения полной функциональности док-станции DisplayLink Manager должен быть установлен и запущен на хост-устройстве.

• Dockが完全に機能するにはDisplayLink Managerがホストデバイスにインストールされ、動作している必要があります。

• Dock가 완전히 작동하려면 DisplayLink Manager가 호스트 장치에 설치되어 있고 작동 중이어야 합니다.

• DisplayLink Manager軟體必須安裝在主機設備上並且運作才能獲得完整的拓展場功能。

• DisplayLink Manager软件必須安裝在主机设备上并且运行才能获得完整的拓展场功能。

• Apple M1/M2/M3 processors limited to only 3 external monitors while using DisplayLink Manager.

• Processeurs Apple M1/M2/M3 limités à seulement 3 écrans externes lors de l'utilisation du gestionnaire DisplayLink.

• Processadores Apple M1/M2/M3 limitados a sólo 3 monitores externos mientras se usa DisplayLink Manager.

• Apple M1/M2/M3 Prozessoren sind bei Verwendung von DisplayLink Manager auf nur 3 externe Monitore beschränkt.

• Processori Apple M1/M2/M3 limitati a soli 3 monitor esterni quando si usa DisplayLink Manager.

• Apple M1/M2/M3 işlemciler, DisplayLink Manager kullanırken yalnızca 3 harici monitöre sınırlıdır.

• Procesory Apple M1/M2/M3 są ograniczone to 3 monitorów zewnętrznych podczas używania DisplayLink Manager.

• Processadores Apple M1/M2/M3 limitados a apenas 3 monitores externos ao usar o DisplayLink Manager.

• Процессоры Apple M1/M2/M3 ограничены только тремя внешними мониторами при использовании DisplayLink Manager.

• Apple M1/M2/M3 프로세서에는 DisplayLink Manager를 사용하면서 3개의 외부 모니터로 제한됩니다.

• 使用DisplayLink Manager時，Apple M1/M2/M3處理器僅限於3個外部顯示器。

• 使用DisplayLink Manager時，Apple M1/M2/M3處理器僅限於3個外部顯示器。

• DisplayLink already installed on Windows OS. Please ensure all drivers are up to date.

• DisplayLink déjà installé sur Windows OS. Veuillez vous assurer que tous les pilotes sont à jour.

• DisplayLink ya está instalado en el sistema operativo Windows. Asegúrese de que todos los controladores están actualizados.

• DisplayLink ist bereits auf dem Windows-Betriebssystem installiert. Bitte vergewissern Sie sich, dass alle Treiber auf dem neuesten Stand sind.

• DisplayLink già installato su Windows OS. Assicurarsi che tutti i driver siano aggiornati.

• DisplayLink zaten Windows işletim sisteminde yüklenmiştir. Lütfen tüm sürücülerin güncel olduğundan emin olun.

• DisplayLink jest już zainstalowany na Windows OS. Należy się upewnić, że wszystkie sterowniki są zaktualizowane.

• DisplayLink já está instalado no sistema operacional Windows. Certifique-se de que todos os drivers estejam atualizados.

• DisplayLink уже установлен в ОС Windows. Пожалуйста, убедитесь, что все драйверы обновлены.

• DisplayLinkはすでにWindows OSにインストールされています。すべてのドライバーが最新に更新されていることを確認して下さい。

• DisplayLink이(가) 이미 Windows OS에 설치되어 있습니다. 모든 드라이버가 최신으로 업데이트되었는지 확인하십시오.

• DisplayLink已安裝在Windows作業系統上，請確保所有驅動程式都是最新的。

• DisplayLink已安裝在Windows操作系統上，請確保所有驅動程序都是最新的。

• DisplayLink Manager not supported on iPadOS or iOS.

• Le gestionnaire DisplayLink n'est pas pris en charge sur iPadOS ou iOS.

• DisplayLink Manager no es compatible con iPadOS o iOS.

• DisplayLink Manager wird auf iPadOS oder iOS nicht unterstützt.

• DisplayLink Manager non supportato su iPadOS o iOS.

• DisplayLink Manager, iPadOS veya iOS'ta desteklenmez.

• DisplayLink Manager nie jest obsługiwany na iPadOS ani iOS.

• O DisplayLink Manager não é compatível com iPadOS ou iOS.

• DisplayLink Manager не поддерживается в iPadOS или iOS.

• DisplayLink Manager는 iPadOSもしくはiOSに非対応です。

• DisplayLink Manager는 iPadOS 또는 iOS를 지원하지 않습니다.

• iPadOS或iOS不支援 DisplayLink Manager。

• iPadOS或iOS不支持 DisplayLink Manager。



This device complies with part 15 of the FCC rules. Operation is subject to the following two conditions:
1. This device may not cause harmful interference and
2. This device must accept any interference received, including interference that may cause undesired operation.
Note: This Equipment has been tested and found to comply with the limits for a class B digital device, pursuant to Part 15 of the Federal Communications Commission (FCC) rules. These limits are designed to provide reasonable protection against harmful interference in a residential installation. This equipment generates, uses, and can radiate radio frequency energy and, if not installed and used in accordance with the instructions, may cause harmful interference to radio communications. However, there is no guarantee that interference will not occur in a particular installation. If this equipment does cause harmful interference to radio or television reception, which can be determined by turning the equipment off and on, the user is encouraged to try to correct the interference by one or more of the following measures:
1.1. Reorient or relocate the receiving antenna
1.2. Increase the separation between the equipment and receiver
1.3. Connect the equipment into and outlet on a circuit different from that to which the receiver is connected
1.4. Consult the dealer or an experienced radio/TV technician for help

Changes or modifications not expressly approved by the manufacturer could void the user's authority operate the equipment.



Satechi declares that this product is in compliance with the essential requirements and other relevant provisions of applicable EC directives. For Europe, a copy of the Declaration of Conformity for this product may be obtained by visiting <https://satechi.net/support/doc>



According to the WEEE (Waste Electrical and Electronic Equipment) Directive, do not dispose of this product as household waste or commercial waste. Waste electrical and electronic equipment should be appropriately collected and recycled as required by practices established for your country. For information on recycling of this product, please contact your local authorities, your household waste disposal service, or the shop where you purchased the product.

CAN ICES-003 (B)/NMB-003(B)
This Class B digital apparatus complies with Canadian ICES-003.
(Cet appareil numérique de la Classe B conforme à la norme NMB-003 du Canada.)



THUNDERBOLT™ 4 MULTI-DISPLAY DOCKING STATION

USER MANUAL

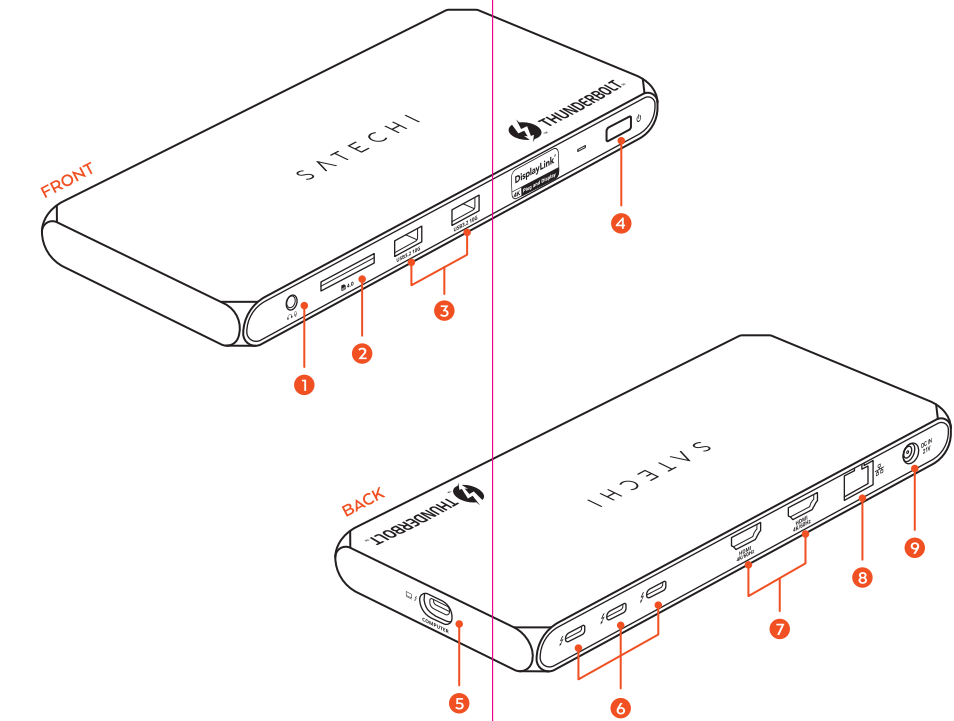


Manuel de l'utilisateur | Manual de usuario | Benutzerhandbuch | Manuale utente | Kullanım kılavuzu | Instrukcja obsługi | Manual de usuário | Руководство пользователя | ユーザーマニュアル | 사용자 매뉴얼 | 使用者說明 | 用戶說明

OUTSIDE

FUNCTIONS

FONCTIONS | FUNCIONES | FUNKTIONEN | FUNZIONI | FONKSIYONLAR | FUNKCIJE | FUNÇÕES | ФУНКЦИИ | 機能 | 기능 | 功能 | 功能



INSIDE

1. Audio Jack (Input / Output)

Prise audio | Conector de Audio | Audio-Buchse | Jack Audio | Ses Jaki | Gniazdo słuchawkowe | Conector de Audio | Audio разъем | 音声ジャック | 오디오 잭 | 音訊插孔 | 音频插孔

2. SD 4.0 Card Slot (UHS-II)

Emplacement pour carte SD 4.0 | Ranura para tarjeta SD 4.0 | SD 4.0-Kartensteckplatz | Slot per scheda SD 4.0 | SD 4.0 Kart Yuvası | Czytnik kart SD 4.0 | Slot para cartão SD 4.0 | Slot для SD 4.0-карты | SD 4.0 카드스ล็อต | SD 4.0 카드 슬롯 | SD 4.0 卡插槽 | SD 4.0卡插槽

3. USB-A 3.2 Gen 2 Ports (10Gbps)

Ports USB-A 3.2 Gen 2 | Puertos USB-A 3.2 Gen 2 | USB-A 3.2 Gen 2-Anschlüsse | Porte USB-A 3.2 Gen 2 | USB-A 3.2 Gen 2 Portları | Porty USB-A 3.2 Gen 2 | Portas USB-A 3.2 Gen 2 | Порты USB-A 3.2 Gen 2 | USB-A 3.2 Gen 2 포트 | USB-A 3.2 Gen 2 포트 | USB-A 3.2 Gen 2端口 | USB-A 3.2 Gen 2 端口

4. Power Button

Bouton D'alimentation | Botón de Encendido | Stromtaste | Tasto di Accensione | Güç Düğmesi | Przycisk Zasilania | Botão Liga/Desliga | Кнопка Питания | 電源ボタン | 전원 버튼 | 電源按鈕 | 電源按鈕

5. Thunderbolt™ 4 Host Port (PD 96W)

Port hôte Thunderbolt™ 4 | Puerto Host Thunderbolt™ 4 | Thunderbolt™ 4 Host-Anschluss | Porta host Thunderbolt™ 4 | Thunderbolt™ 4 Host Portu | Port Thunderbolt™ 4 Host | Porta host Thunderbolt™ 4 | Хост-порт Thunderbolt™ 4 | Thunderbolt™ 4 主机端口 | Thunderbolt™ 4 호스트 포트 | Thunderbolt™ 4 主機端口 | Thunderbolt™ 4 主机端口

6. 3X Thunderbolt™ 4 Ports (40Gbps)

Ports Thunderbolt™ 4 USB-C | Puertos Thunderbolt™ 4 USB-C | Thunderbolt™ 4 USB-C-Anschlüsse | Porte Thunderbolt™ 4 USB-C

| Thunderbolt™ 4 USB-C Portları | Porty Thunderbolt™ 4 USB-C | Portas Thunderbolt™ 4 USB-C | Порты Thunderbolt™ 4 USB-C | Thunderbolt™ 4 USB-C 포트 | Thunderbolt™ 4 USB-C 포트 | Thunderbolt™ 4 USB-C 連接埠 | Thunderbolt™ 4 USB-C 端口

7. 2X HDMI Video Ports* (4K/60Hz)

Ports vidéo HDMI | Puertos de video HDMI | HDMI-Video-Anschlüsse | Porte video HDMI | HDMI Video Portları | Porty video HDMI | Portas de vídeo HDMI | Порты видео HDMI | HDMIビデオポート | HDMI 비디오 포트 | HDMI 視訊連接埠 | HDMI 視頻端口

8. Ethernet Port (1 Gigabit)

Port Ethernet | Puerto Ethernet | Ethernet-Anschluss | Porta Ethernet | Ethernet Portu | Port Ethernet | Conexão de Rede | Порт Ethernet |イーサネットポート | 이더넷 포트 | 乙太網路埠 | 以太网端口

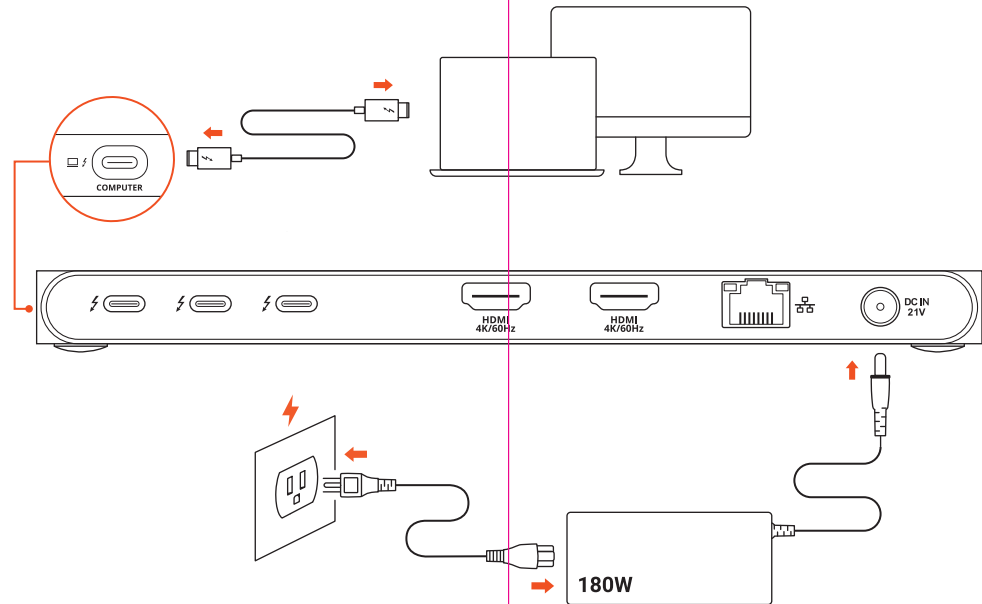
9. DC IN Port (180W)

Port DC IN | Puerto DC IN | DC-IN-Anschluss | Porta DC IN | DC IN Portu | Port DC IN | Porta DC IN | Порт DC IN | DC IN 端口 | DC IN 포트 | DC IN 連接埠 | DC IN 端口

*Ports will not function without DisplayLink software | Les ports ne fonctionneront pas sans le logiciel DisplayLink | Los puertos no funcionarán sin el software DisplayLink | Die Ports funktionieren nicht ohne DisplayLink-Software | Le porte non funzionano senza il software DisplayLink | DisplayLink yazılımı olmadan portlar işlevsel değildir | Porty nie będą działać bez oprogramowania DisplayLink | As portas não funcionarão sem o software DisplayLink | Порты не будут работать без программного обеспечения DisplayLink | DisplayLinkソフトなしではポートは機能しません | DisplayLink 소프트웨어 없이는 포트가 작동하지 않습니다 | 如果沒有安裝DisplayLink軟體，連接埠將無法運作 | 如果沒有安裝 DisplayLink 軟件，端口將無法工作

PLUG & PLAY

BRANCHEZ & JOUEZ | CONECTAR Y USAR | STECKEN & SPIELEN | COLLEGARE E GIOCARE | TAK VE ÇALIŞTIR | PODŁĄCZ I UŻYWAJ | CONECTE E USE | ПОДКЛЮЧИ И РАБОТАЙ | プラグ&プレイ | 플러그 앤 플레이 | 即插即用 | 即插即用



NOTE:

• Power adapter and one Thunderbolt™ 4 cable included | Adaptateur d'alimentation et un câble Thunderbolt™ 4 inclus • Adaptador de corriente y un cable Thunderbolt™ 4 incluidos • Netzadapter und ein Thunderbolt™4-Kabel im Lieferumfang enthalten • Adattatore di alimentazione e un cavo Thunderbolt™ 4 in dotazione • Güç adaptörü ve bir Thunderbolt™ 4 kablosu dahildir • Zasilacz i jeden kabel Thunderbolt™ 4 w zestawie • Adaptador de alimentação e um cabo Thunderbolt™ 4 incluídos • Адаптер питания и один кабель Thunderbolt™ 4 входят в комплект поставки • 電源アダプターとThunderbolt™4ケーブル1本付属 • 전원 어댑터 및 Thunderbolt™ 4 케이블 1개 포함 • 隨附電源轉換器和一條 Thunderbolt™ 4 電纜 • 隨附電源适配器和一條 Thunderbolt™ 4 電纜

NEED HELP?

BESOIN D'AIDE? | ¿NECESITA AYUDA? | BENÖTIGEN SIE HILFE? | HAI BISOGNO DI AIUTO? | YARDIMA MI İHTİYACINIZ VAR? | POTRZEBUJE POMOCY? | PRECISA DE AJUDA? | ИУЖНА ПОМОЩЬ? | 助けが必要ですか? | 도움이 필요하신니까? | 需要幫助? | 需要幫助?

+1 858 268 1800

support@satechi.com

7365 Mission Gorge Rd. Ste. G
San Diego, CA 92120, USA

www.satechi.net

