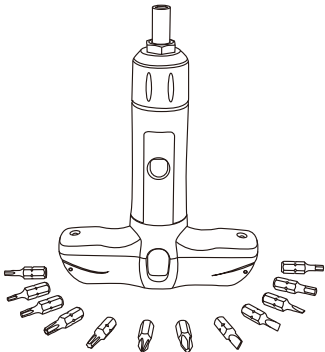


ALEAP»W

User Manual

Torque Screwdriver

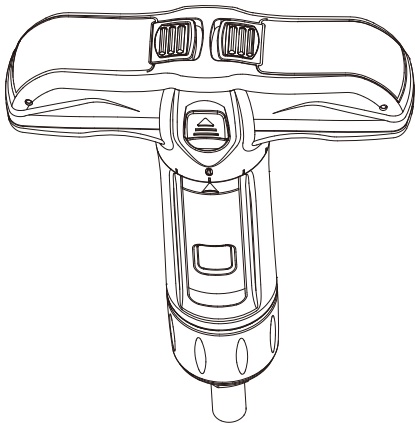


Model:ATSD01

SCREEN SCALE T-HANDLE TORQUE SCREWDRIVER

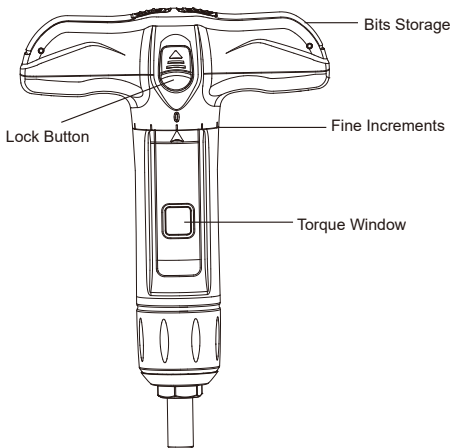
Technical Data

Torque Range	Bit type	Fine scale	Length	Width	Height
2-8 N.M	1/4"	0.1 n.m	173 mm	122mm	37.5mm
15-75 IN.LB	1/4"	1 in.lb	7"	5"	1-1/2"



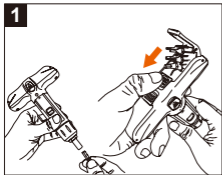
NOTE

1. Torque tools require regular calibration and servicing to assure its accuracy and long term use. Please make sure your device is calibrated and the operator has professional knowledge to set up the torque. Otherwise, please kindly send your torque tool back to your dealer to maintain its safety and accuracy.
2. It may damage the torque screwdriver's internal mechanisms, resulting in inaccurate torque adjustment if you leave it at a high torque setting for long time **ALWAYS ADJUST THIS DEVICE TO THE LOWEST TORQUE SETTINGS AFTER EACH USE**
3. Adjusting the torque wrench setting beyond its torque range may damage the internal mechanisms, resulting in inaccurate torque adjustments.
4. This device is designed for $\pm 5\%$ accuracy within full range of measurement.

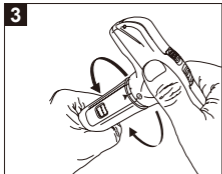


Operation Manual

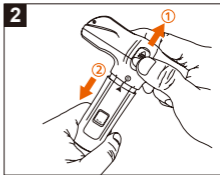
1. Pull the one of bits container buckle to unlock the cover, then 6-bit seat pops up. There are total 12 bits stored in one tool. You can keep bits inside for easy use.



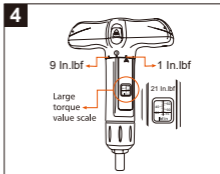
3. While adjusting torque, you need to hold the torque tube, and rotate the T-handle to the expected torque value. CW turn for torque increasing, C-CW turn for torque decreasing.



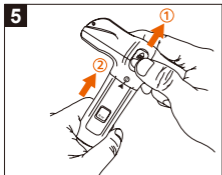
2. To adjust the torque, use one hand to hold the T-handle to pull up the lock button, use another hand to hold the torque tube on the opposite direction.



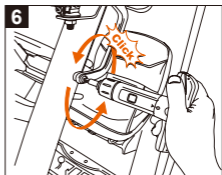
4. You can check scale window for integer torque value, and the scale ring for fine increment. Each indicator means 1 in.lb



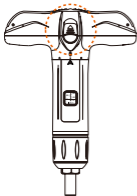
5. After torque adjusting, use one hand to hold the T-handle and pull up the lock button, another hand to hold the torque tube and push up.



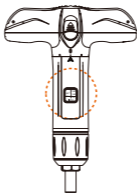
6. Then you can operate the torque screwdriver. When the pre-set torque value is reached, you will hear audible "click" sound, the slipper mechanism is activated.



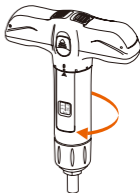
TIPS FOR USING THIS DEVICE FEATURE



Lock button



Screen Scale



One-way use

How to use this device

