

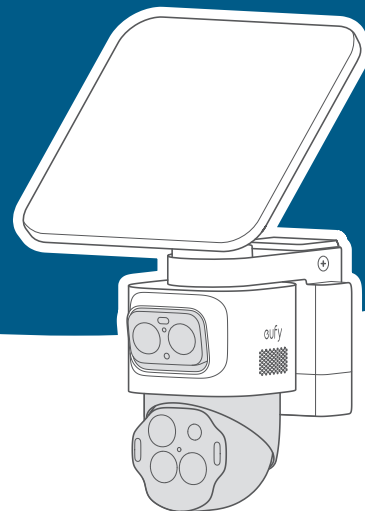


## eufyCam S4

### Quick Start Guide

©Anker Innovations Limited. All rights reserved, registered in the United States and other countries.

Anker Innovations Limited  
Unit 56, 8th Floor, Tower 2, Admiralty Centre, 18 Harcourt Road, Hong Kong



The number of cameras varies.



For Video / User Guide / Support

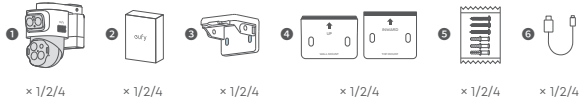
Model: T8172, T8030  
51005005774\_V3



# What's in the Box

Contact [support@eufy.com](mailto:support@eufy.com) if anything is missing.

## For Camera Installation



## For Solar Panel Installation



## Other



- 1 Cameras
- 2 Rechargeable Battery (Pre-installed or Included Separately)
- 3 Camera Mounting Brackets
- 4 Positioning Stickers for Camera Mount
- 5 Screw Packs (Camera)
- 6 USB Charging Cables
- 7 Solar Panels
- 8 Solar Panel Mounting Brackets
- 9 Positioning Stickers for Solar Panel Mounting Bracket
- 10 Solar Panel Extension Cables
- 11 Screw Packs (Solar Panel)
- 12 QSG

## For HomeBase Setup \*Only available in 2-cam/4-cam kit.



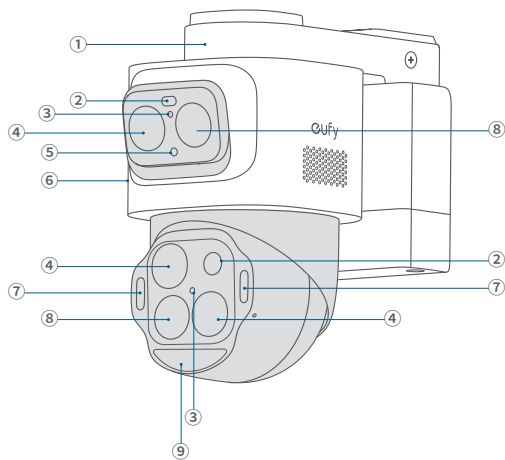
- 1 HomeBase S380
- 2 Ethernet Cable
- 3 Power Adapter
- 4 Reset Pin & Hard Drive Screw Pack

## Tools You Will Need

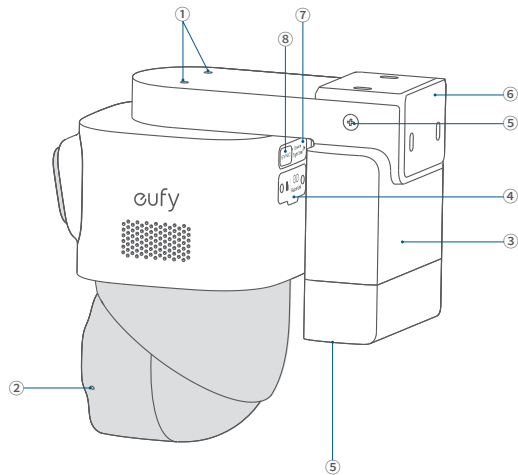


The number of cameras and the types of accessories vary depending on the kit you purchase.

# At a Glance



- ① Mounting Base
- ② Spotlight
- ③ Photosensitive Sensor
- ④ Camera Lens
- ⑤ LED Indicator
- ⑥ Speaker
- ⑦ Warning Light
- ⑧ PIR Sensor
- ⑨ Radar Sensor



- ① Solar Panel Mounting Holes
- ② Microphone
- ③ Battery Holder
- ④ Fusion Link Port & SD Card Slot
- ⑤ Spring Screw
- ⑥ Mounting Bracket
- ⑦ USB-C Charging Port
- ⑧ SYNC Button

# Before Mounting

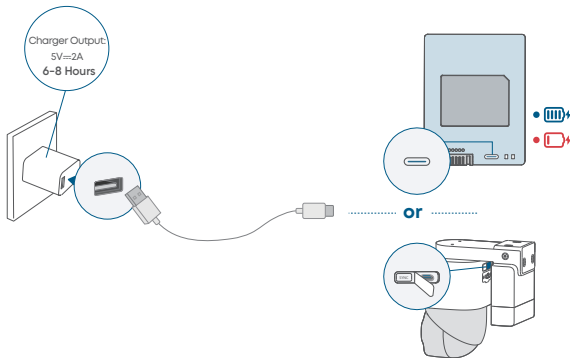
## 1. Download eufy App

 Make sure your app is updated to the latest version.



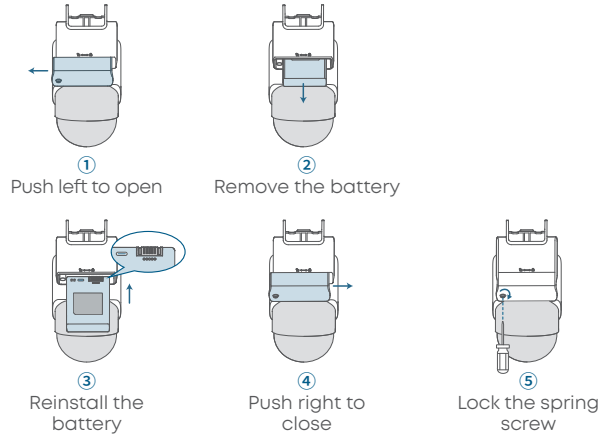
## 2. Fully Charge the Camera

Charge the camera directly or take out the battery for charging.



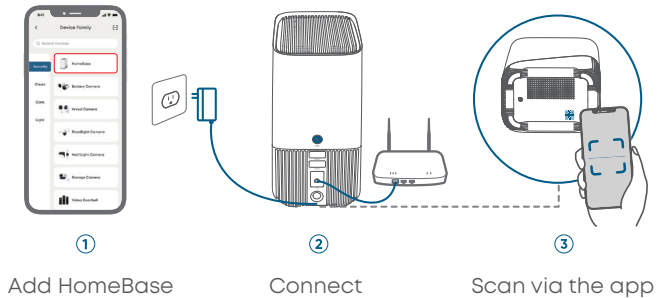
 You can check the battery level in the app.

## To Install/Uninstall the Battery

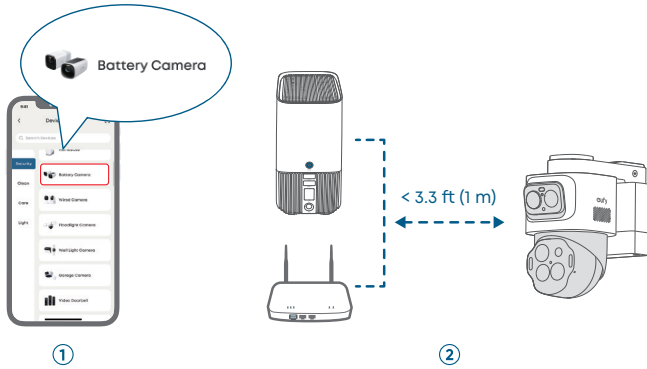


## 3. Add HomeBase (Optional)

Follow the in-app instructions to add HomeBase.



## 4. Add eufyCam S4



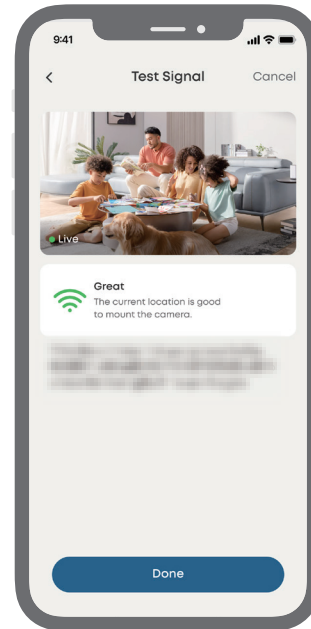
Add camera

Connect to HomeBase or router

## 5. Recheck in the App

Check before installation:

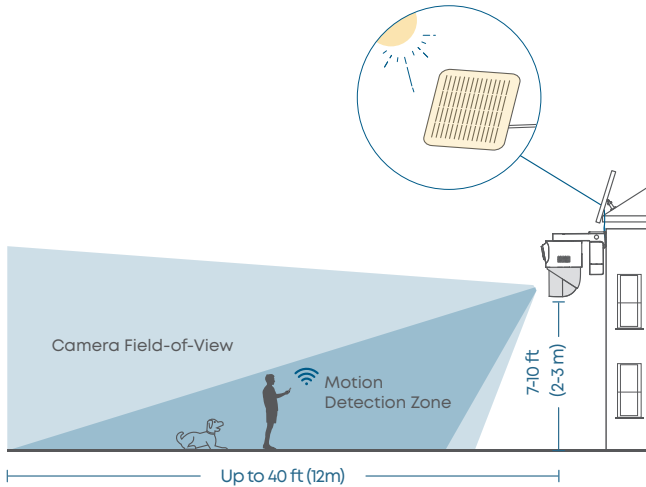
- Strong Wi-Fi signal
- Smooth live streaming




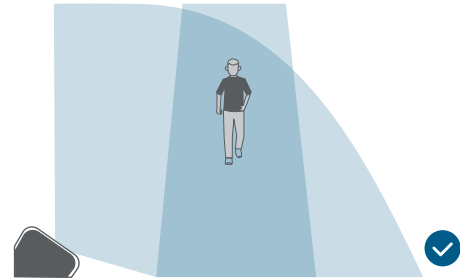
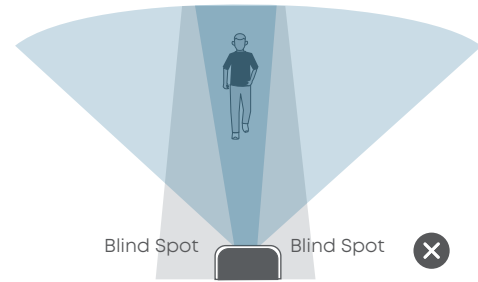
## 6. Choose a Location

### Recommended location:

- Height of 2 m to 3 m (7 ft to 10 ft)
- Where solar panels get enough sunlight
- Strong Wi-Fi signal

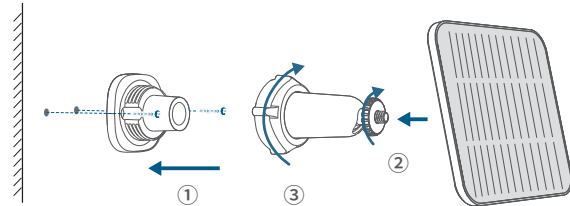
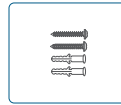
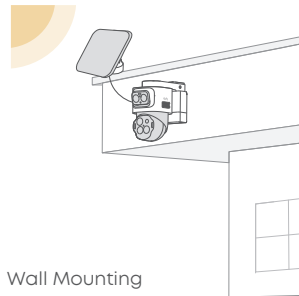
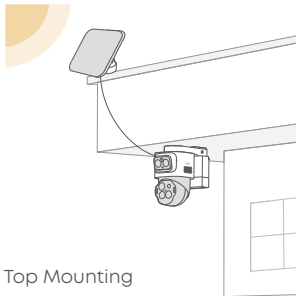


 To avoid missed detections, install the cameras at an angle rather than directly facing the monitoring area.

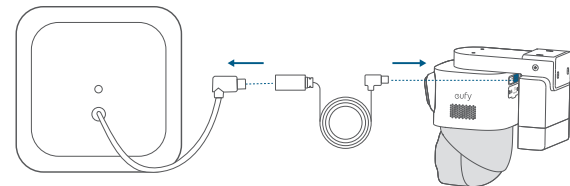


# Mount the Solar Panel

## Option 1 Flexible Mounting (Best Sunlight)

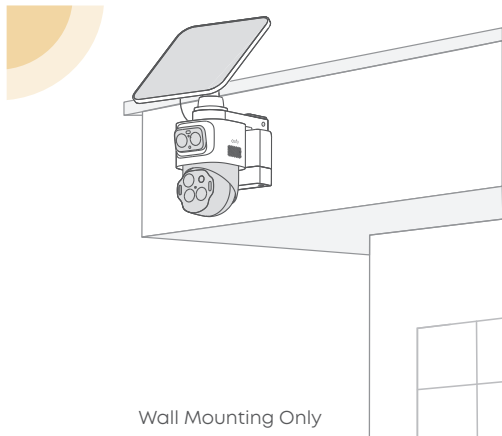


- ① Install the base
- ② Tighten the small knob
- ③ Tighten the large knob

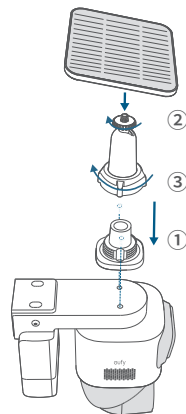


- ④ Connect the solar panel to the camera

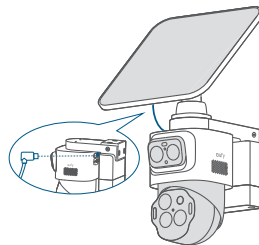
## Option 2 Integrated Mounting (Less Drilling)



Please use the **8 mm** screws to install the solar panel onto the camera.



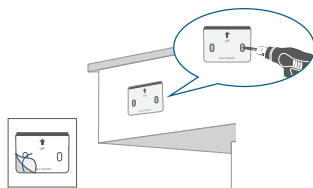
- ① Install the base
- ② Tighten the small knob
- ③ Tighten the large knob



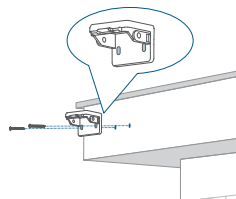
- ④ Connect the solar panel to the camera

# Mount the Camera

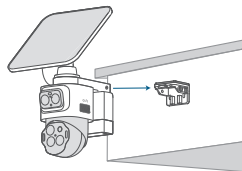
## Wall Mounting



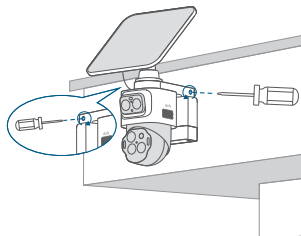
① Position & Drill holes



② Install the Mounting Bracket

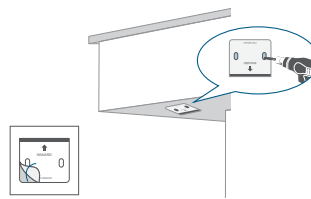


③ Insert the camera

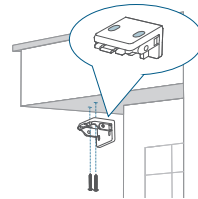


④ Lock the 2 spring screws

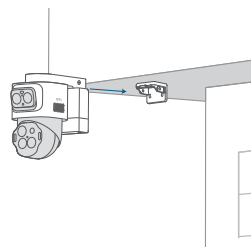
## Top Mounting



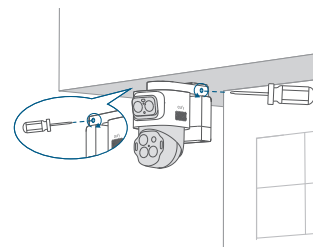
① Position & Drill holes



② Install the Mounting Bracket



③ Insert the camera

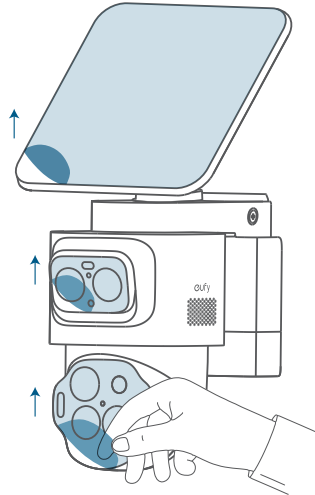


④ Lock the 2 spring screws

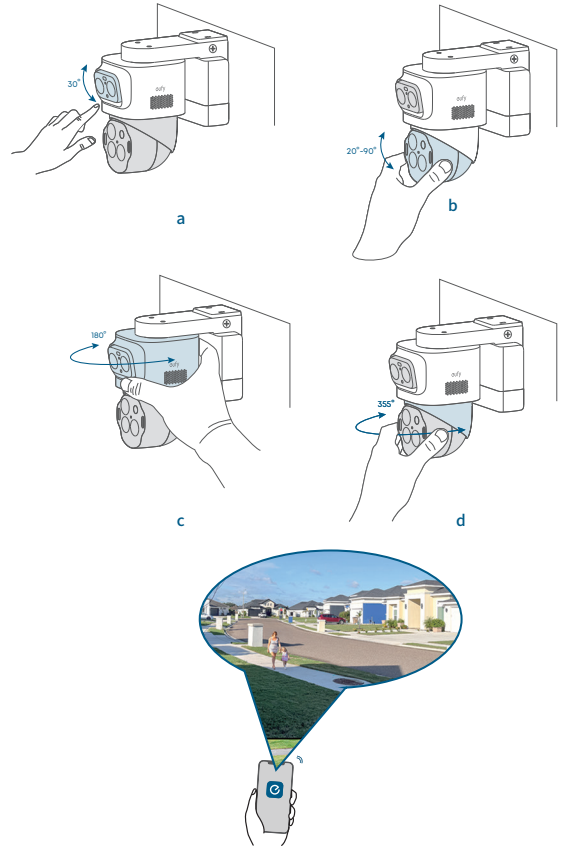
# After Mounting

## Adjust the Camera Field of View

① Remove the protective film

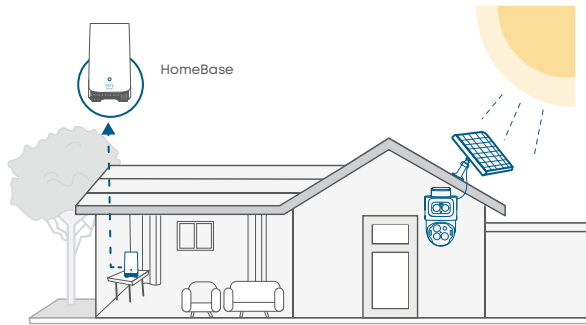


② Rotate the camera to the optimal angle

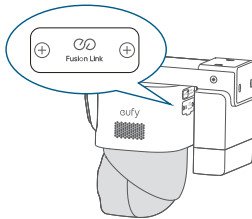


## Find Out More

Congratulations! Now you're all set to use your eufyCam S4!  
Please explore more in the eufy app.



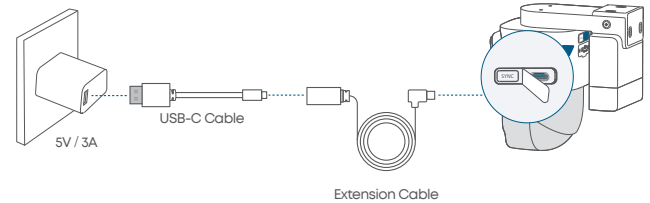
## Fusion Link



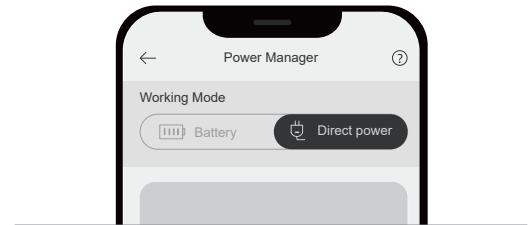
Fusion Link serves as an expansion port for future eufy accessories, including support for long-range image transmission. Learn more at [support.eufy.com](https://support.eufy.com).

## Set Up the Wired Mode

① Connect the camera to a 5V/3A adapter.



② Switch to *Wired Mode* in the eufy app and enjoy 24/7 surveillance.



# Customer Service



12-month limited warranty



support@eufy.com  
support.au.eufy.com (AU)



(US) +1 (800) 988 7973



@EufyOfficial



@EufyOfficial



@EufyOfficial

Australian and New Zealand customers, please scan the QR code for the warranty information:

