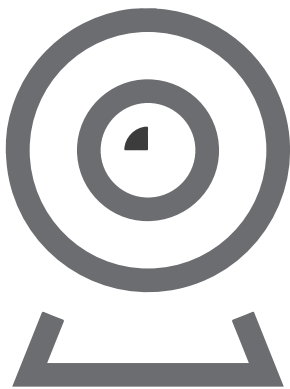


ARCCTV

HD WIFI SECURITY CAMERA

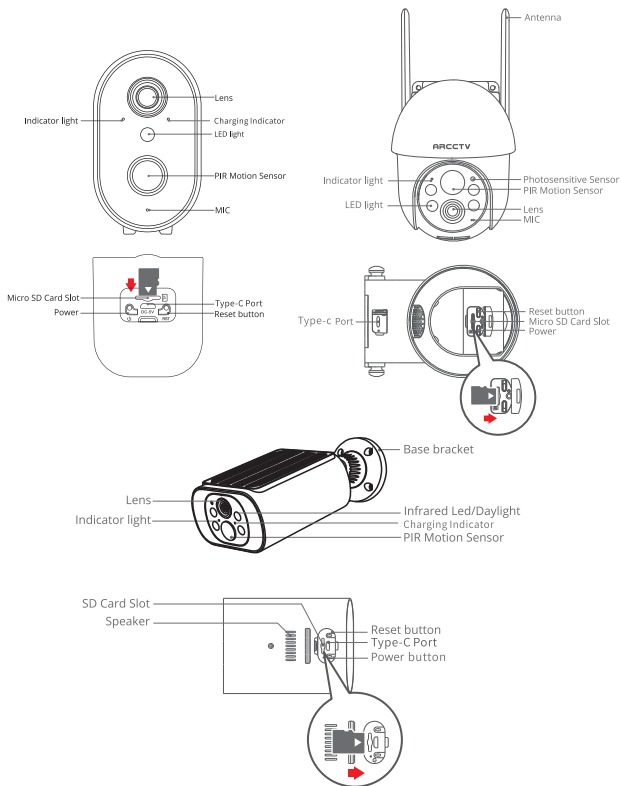
Quick Start Guide



🌐 www.arcctlife.com

✉ support@arcctlife.com

1. Product overview



Tips: Before connecting the device to the app, make sure to power on the camera first-just press and hold the camera's power button for 3 to 5 seconds.

2. Download the ARCCTV APP

Download “ARCCTV” from Google Play /App Store or Scan the following QR Code onto your Mobile Phone.



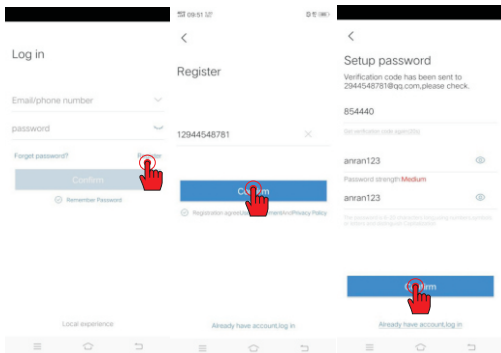
Android




iOS


3. Register an account

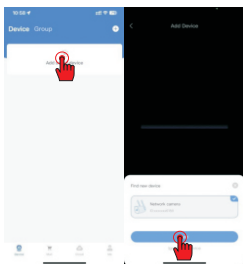
1. Open the “ARCCTV” APP to register an account. Go to the login interface then click “Register” (Figure 1)
2. Register with your phone number or email address, click “Confirm”, a verification code will be sent to your phone or email-box (Figure 2)
3. Input the verification code and set a password for the app account, click "Confirm" to complete (Figure 3)



4. How to set up WiFi

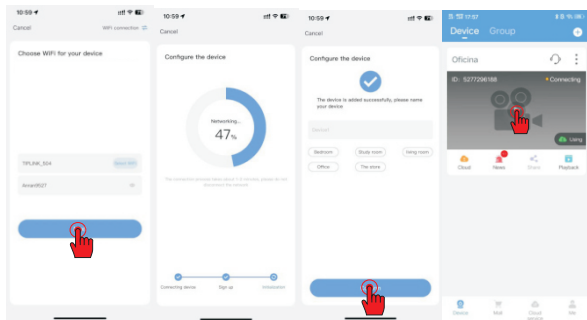
Turn on the bluetooth  on your mobile to start with WiFi configuration for the camera.

Step 1: Open the app, click “Add smart device” or click the icon  in the top right corner, then the APP will search through Bluetooth to find out the camera hotspots within the range, and click “add” directly.



Step2: Select your home WiFi and input the WiFi password, click “Next” . Please wait until you hear a voice message “Wireless Connection Successfully” , it means that your camera has connected to your home WiFi successfully. Name your camera and click “Confirm” .

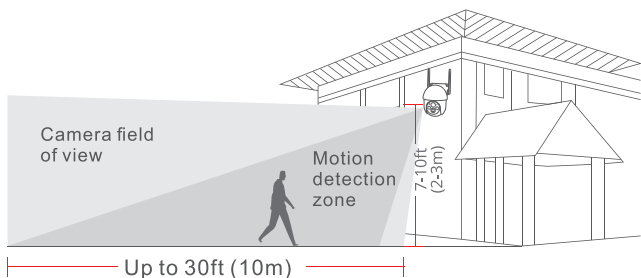
Step3: Enter the device list interface and click the play button to enjoy the camera screen.



Mount the camera

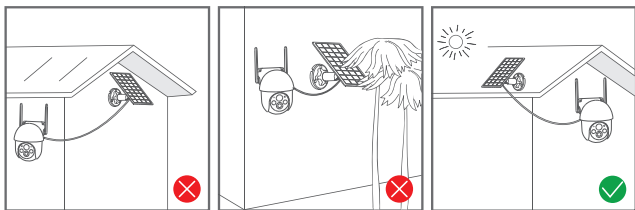
Select height and location

Hang the camera 7 -10 ft (2-3m) above the ground. This height maximizes the detection range of the motion sensor of the camera. Avoid placing the camera under direct sunlight.



Tips for the installation of solar panel

1. When installing in the northern hemisphere, face the panel to the south, and when installing in the southern hemisphere, face the panel to the north.
2. Take care to install the solar panel so that the sun is not blocked by any items such as leaves, trees branches, etc.



5. FAQs

① What can I do if the camera setting Wi-Fi failed?

1. Make sure it's powered up correctly, and the infrared lights will turn on at darkness.
2. Make sure the camera & mobile phone are close to the router, which should be less than 5 meters
3. Make sure the bluetooth is turned on of your mobile and allow the permission of nearby device.
4. Make sure the WiFi password is correct and there is no special symbols in password (such as *!@#\$\$%).
5. Restore the camera to factory settings and try configure it again.