



JLAB®
|
JBUDS
KEYBOARD

We love that you are rocking JLab!
We take pride in our products and fully stand behind them.



YOUR WARRANTY

All warranty claims are subject to JLab authorization and at our sole discretion. Retain your proof of purchase to ensure warranty coverage.



CONTACT US

Reach out to us at support@jlab.com or visit jlab.com/contact

REGISTER TODAY

jlab.com/register

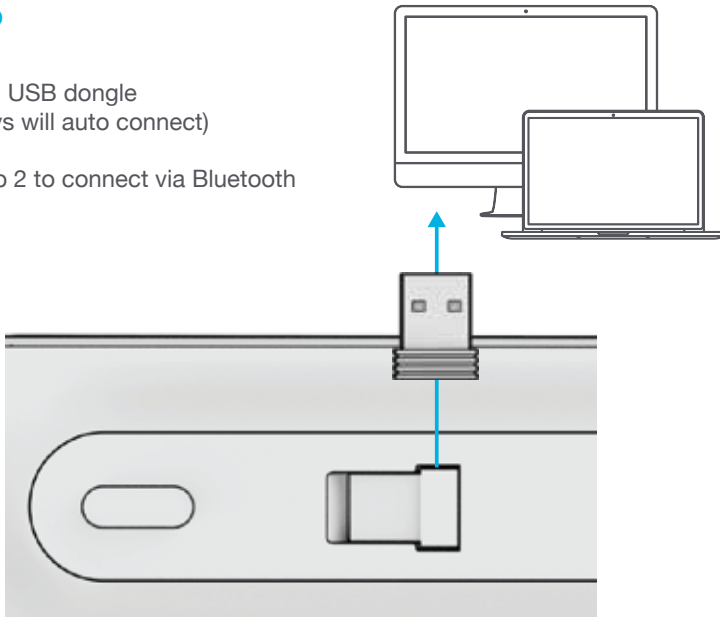
Product updates | How-to tips
FAQs & more

1 SETUP

Install 2.4G USB dongle
(JBuds Keys will auto connect)

OR

Follow Step 2 to connect via Bluetooth



2 CONNECT

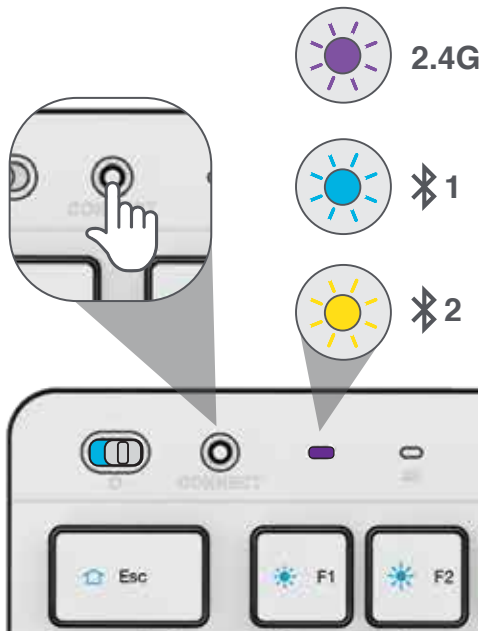
SWITCH CONNECTION:

Quick Press CONNECT
(Light switches to associated connection)

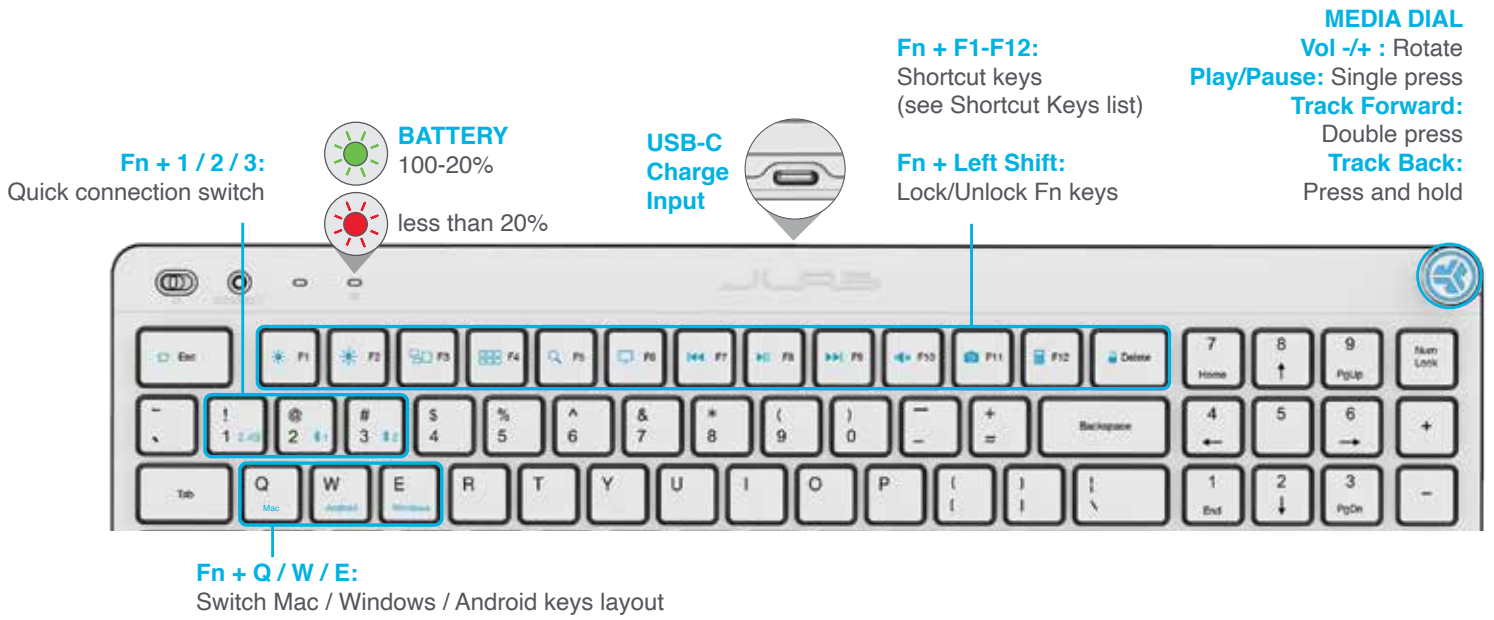
BLUETOOTH PAIRING:

Switch to 1 or 2
Press and hold CONNECT
(Blinking light)

Select "JLab JBuds Keys"
in device settings



3 KEYS



SHORTCUT KEYS

Fn +	MAC	PC	Android
Esc	N/A	Homepage	N/A
F1	Brightness -	Brightness -	Brightness -
F2	Brightness +	Brightness +	Brightness +
F3	Task Control	Task Control	N/A
F4	Show Applications	Notification Center	N/A
F5	Search	Search	Search
F6	N/A	Desktop	N/A
F7	Track Back	Track Back	Track Back
F8	Play/Pause	Play/Pause	Play/Pause
F9	Track Forward	Track Forward	Track Forward
F10	Mute	Mute	Mute
F11	Screenshot	Screenshot	N/A
F12	N/A	Calculator	N/A
Delete	Screen lock	Screen lock	Screen lock

Customize the Epic Keys
with the JLab App
[JLab.com/software](https://www.jlab.com/software)



Shop products | Product alerts | Burn-in your headphones

JLab Store + Burn-in Tool

