

Floor Troughs

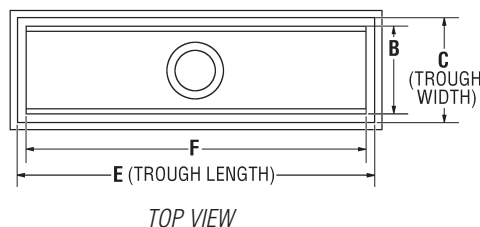
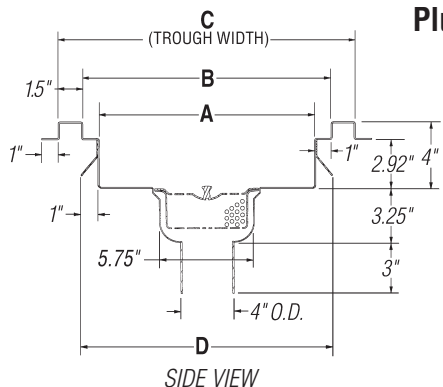
INSTALLATION INSTRUCTIONS

CAUTION

INSPECT CONTENTS IMMEDIATELY AND FILE CLAIM WITH DELIVERING CARRIER FOR ANY DAMAGE.
SAVE YOUR BOX AND ALL PACKING MATERIALS.
YOU ARE RESPONSIBLE FOR DAMAGE TO YOUR UNIT IF RETURNED IMPROPERLY PACKED.



Plumbing Rough-ins

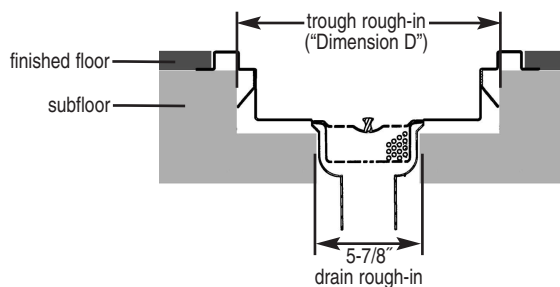


(see chart below for dimensions A through F)

12" (305mm)-WIDE TROUGHS dimension A: 7" (178mm) dimension B: 9" (229mm) dimension C: 12" (305mm) dimension D: 9.25" (232mm) model #	15" (381mm)-WIDE TROUGHS dimension A: 10" (254mm) dimension B: 12" (305mm) dimension C: 15" (381mm) dimension D: 12.25" (311mm) model #	18" (457mm)-WIDE TROUGHS dimension A: 13" (330mm) dimension B: 15" (381mm) dimension C: 18" (457mm) dimension D: 15.25" (387mm) model #	24" (610mm)-WIDE TROUGHS dimension A: 19" (483mm) dimension B: 21" (533mm) dimension C: 24" (610mm) dimension D: 21.25" (540mm) model #	TROUGH LENGTHS		dimension F	
				dimension E	dimension F	in.	mm
FT-1218-FG	n/a	n/a	n/a	18"	457	15"	381
FT-1224-FG	FT-1524-FG	FT-1824-FG	FT-2424-FG	24"	610	21"	533
FT-1230-FG	FT-1530-FG	FT-1830-FG	FT-2430-FG	30"	762	27"	686
FT-1236-FG	FT-1536-FG	FT-1836-FG	FT-2436-FG	36"	914	33"	838
FT-1248-FG	FT-1548-FG	FT-1848-FG	FT-2448-FG	48"	1219	45"	1143
FT-1260-FG	FT-1560-FG	FT-1860-FG	FT-2460-FG	60"	1524	57"	1448
FT-1272-FG	FT-1572-FG	FT-1872-FG	FT-2472-FG	72"	1829	69"	1753
FT-1284-FG	FT-1584-FG	FT-1884-FG	FT-2484-FG	84"	2134	81"	2057
FT-1296-FG	FT-1596-FG	FT-1896-FG	FT-2496-FG	96"	2438	93"	2362
FT-12120-FG	FT-15120-FG	FT-18120-FG	FT-24120-FG	120"	3048	117"	2972

The above chart indicates troughs with fiberglass grating. For troughs with ADA-approved wide "T" Bar fiberglass grating, add suffix "-ADA". Example: FT1224-FG-ADA
For troughs with stainless steel grating, replace suffix "-FG" with "-SG". Example: FT1224-SG

- Size of rough-in hole for trough should be as follows:
Width = "Dimension D"
Length = "Dimension E"
Depth = 4 1/4"
- Size of rough-in hole for drain should be 5 7/8" diameter.
Depth, to accommodate plumbing, may vary.
- Place trough in hole.
- Lay finished floor so that it overlaps outer flange on all four sides of trough.
- Lay grating inside trough accordingly.



(End)

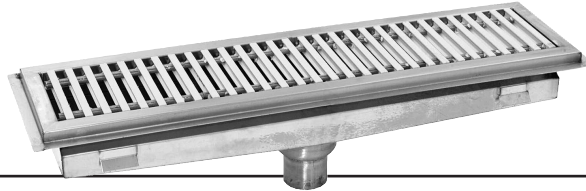
EG10094 Revised 01/15

Anti-Splash Floor Troughs

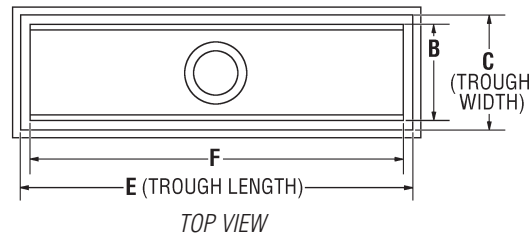
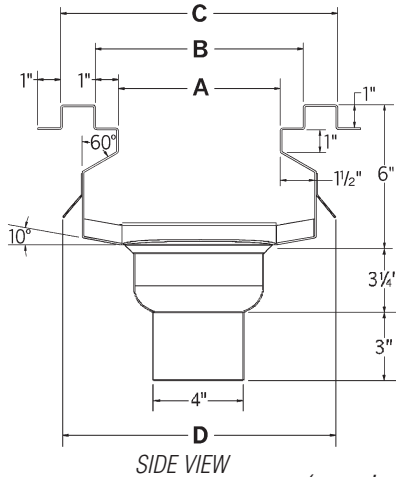
INSTALLATION INSTRUCTIONS

CAUTION

INSPECT CONTENTS IMMEDIATELY AND FILE CLAIM WITH DELIVERING CARRIER FOR ANY DAMAGE.
SAVE YOUR BOX AND ALL PACKING MATERIALS.
 YOU ARE RESPONSIBLE FOR DAMAGE TO YOUR UNIT IF RETURNED IMPROPERLY PACKED.



Plumbing Rough-ins

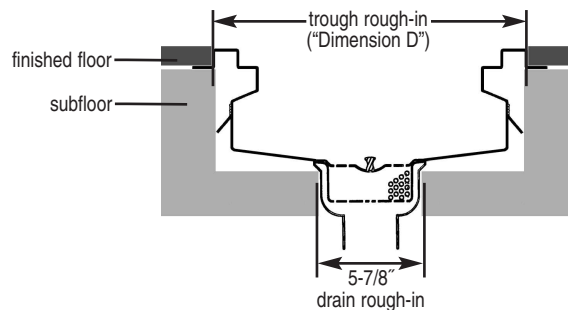


(see chart below for dimensions A through F)

12" (305mm)-WIDE TROUGHS		15" (381mm)-WIDE TROUGHS		18" (457mm)-WIDE TROUGHS		24" (610mm)-WIDE TROUGHS		TROUGH LENGTHS			
dimension A: 7" (178mm)		dimension A: 10" (254mm)		dimension A: 13" (330mm)		dimension A: 19" (483mm)		dimension E	dimension F		
dimension B: 9" (229mm)		dimension B: 12" (305mm)		dimension B: 15" (381mm)		dimension B: 21" (533mm)					
dimension C: 12" (305mm)		dimension C: 15" (381mm)		dimension C: 18" (457mm)		dimension C: 24" (610mm)		in.	mm		
dimension D: 11.25" (286mm)		dimension D: 14.25" (362mm)		dimension D: 17.25" (438mm)		dimension D: 23.25" (591mm)					
model #	model #	model #	model #	model #	model #	model #	model #				
ASFT-1218-FG	n/a	n/a	n/a	n/a	n/a	n/a	n/a	18"	457	15"	381
ASFT-1224-FG	ASFT-1524-FG	ASFT-1824-FG	ASFT-2424-FG	24"	610	21"	533	24"	610	27"	686
ASFT-1230-FG	ASFT-1530-FG	ASFT-1830-FG	ASFT-2430-FG	30"	762	27"	686	30"	762	33"	838
ASFT-1236-FG	ASFT-1536-FG	ASFT-1836-FG	ASFT-2436-FG	36"	914	33"	838	36"	914	45"	1143
ASFT-1248-FG	ASFT-1548-FG	ASFT-1848-FG	ASFT-2448-FG	48"	1219	45"	1143	48"	1219	57"	1448
ASFT-1260-FG	ASFT-1560-FG	ASFT-1860-FG	ASFT-2460-FG	60"	1524	57"	1448	60"	1524	69"	1753
ASFT-1272-FG	ASFT-1572-FG	ASFT-1872-FG	ASFT-2472-FG	72"	1829	69"	1753	72"	1829	81"	2057
ASFT-1284-FG	ASFT-1584-FG	ASFT-1884-FG	ASFT-2484-FG	84"	2134	81"	2057	84"	2134	93"	2362
ASFT-1296-FG	ASFT-1596-FG	ASFT-1896-FG	ASFT-2496-FG	96"	2438	93"	2362	96"	2438	117"	2972
ASFT-12120-FG	ASFT-15120-FG	ASFT-18120-FG	ASFT-24120-FG	120"	3048	117"	2972				

The above chart indicates troughs with fiberglass grating. For troughs with ADA-approved wide "T" Bar fiberglass grating, add suffix "-ADA". Example: ASFT1224-FG-ADA
 For troughs with stainless steel grating, replace suffix "-FG" with "-SG". Example: ASFT1224-SG

- Size of rough-in hole for trough should be as follows:
 Width = "Dimension D"
 Length = "Dimension E"
 Depth = 6 1/4"
- Size of rough-in hole for drain should be 5 7/8" diameter.
 Depth, to accommodate plumbing, may vary.
- Place trough in hole.
- Lay finished floor so that it overlaps outer flange on all four sides of trough.
- Lay grating inside trough accordingly.



• 100 Industrial Boulevard, Clayton, Delaware 19938-8903 U.S.A. • www.eaglegrp.com
 • Phone: 302/653-3000 • (Foodservice) 800/441-8440 • (MHC/Retail) 800/637-5100
 • Fax: 302/653-2065

