



WOPET

# INSTRUCTIONS

WOpet Chimp 7L Automatic Pet Feeder

F04



# 【CONTENTS】

Feeder appearance .....	1
Feeder assembling .....	4
Function setting .....	6
Feeder cleaning .....	12
Important notes .....	13
FCC warnings .....	14
Warranty Information .....	16
Have a Question For the Seller .....	18

## Please read these instructions carefully before use

Thank you for choosing this WOpet intelligent product. In order to guarantee your personal and material safety, please read these instructions carefully before using our product. Under no circumstances shall WOPET be liable to pay compensation or damages to any person for any loss, injury, or damage, unless it's explicitly stipulated in law, whatsoever occasioned by this product or as a result of not following the items and conditions and precautions laid in these instructions.

## ► Feeder appearance

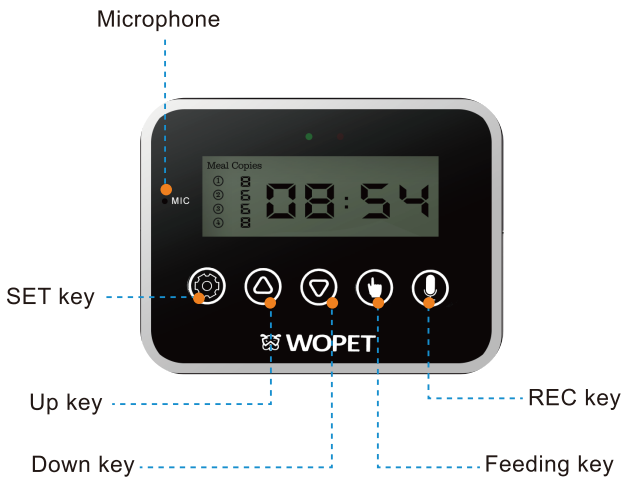
### ■ Feeder specification



- Product name: WOpet Chimp 7L Automatic Pet Feeder
- Product size: 14.8 X 13.8 X 8.8inch
- Net weight: 2.9 KG
- Barn reserves: 7L
- One portion: 5 grams (8 portions at most per meal)
- Meal: 1-4 Meal Per Day
- Food size: 5-15 mm (dry food only)
- Model number: F04
- Product materials: ABS
- Adapter parameters: ● Input: 110-220V, 50/60HZ, 0.6A  
● Output: 5.0V, 2000mA



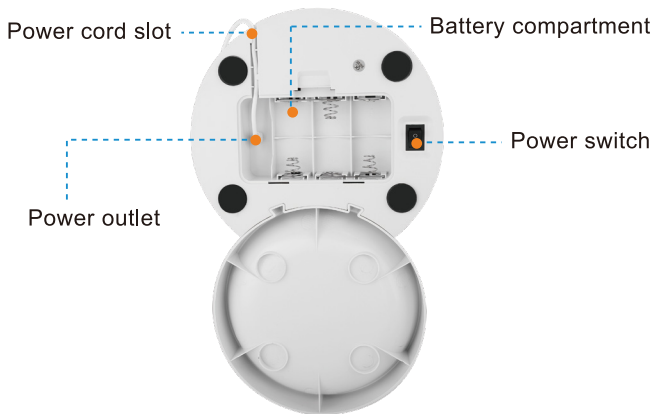
## ■ Schematic diagram of the key panel



## ▶ Feeder assembling

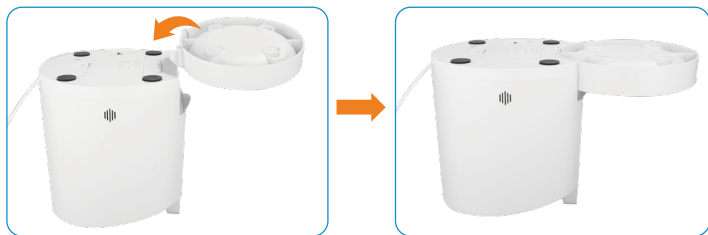
### ■ Connect the adapter

- As shown in the picture, place the power cord into the bottom slot to prevent the feeder from losing power during movement.
- Set the bottom power switch to "I".
- You can also use batteries to ensure that the feeder can work normally when there's power outage. (3 new D cell, alkaline batteries. BATTERIES NOT INCLUDED)



## ■ Assemble the feeding tray

- 1 Put the feeder upside down, and align the two clasps on the feeding tray with the slot on the base, and gently push it down until it is firmly clamped in place. (Slide it upward to remove the tray)
- 2 Place the feeder upright, and put the stainless steel bowl in the tray.



## ■ Assemble the food bucket

- 1 Align the four clips on the feeder inner wall with the four grooves on the edge of the food bucket. (Disassemble it by pulling it out)

## ■ Assemble the top cover

- 1 Rotate the top cover clockwise until it is locked. The top cover can be lifted up by turning it counterclockwise.

## ▶ Function setting

### ■ Power on

- 1 Plug-in the feeder, and check the bottom power switch is on.
- 2 When the power is on, the green light flashes, which indicates that the power is normal. (You can also use batteries in case of power outage)

### ■ Set the current time

- 1 Press the "set" key until the LCD backlight lights up, and release it. It will now enter the setting mode, and the first digit of the hour number starts to flash.
- 2 Press the "up" or "down" key to set the required number. After this digit is set, press the "set" key to move the cursor to enter the second digit of the hour number.

- 3 The setting of the minutes is the same as setting the hours.

**Note:** The machine uses a 24-hour clock system.



## ■ Set feeding schedule

- 1 The feeding setting includes the feeding amount and the feeding time.
- 2 Press the "set" key to enter the feeding setting of the first meal. At this time, the meal number labeled as the first meal "①" starts to flash.
- 3 Press the "up" or "down" key to set the "Copies". This "Copies" represents the servings of each meal.  
**Note:** The maximum number is 8.
- 4 After setting the number of servings, press the "set" key to move the cursor to set the feeding time of the first meal. The setting method is the same as setting the current time.



- 5 After finishing setting the first meal, press the "set" key to move the cursor to enter the settings of the second meal "②". Follow the same steps as setting the first meal.
- 6 Repeat to set feeding schedules for the other meals.

**Note:** The set value will be saved after the LCD backlight goes off, and the device will enter the lock screen state. If you want to set it again, you need to press the "set" key to unlock the device.



## ■ Cancel feeding schedule

- 1 In the setting state, when there is no operation for more than 8 seconds, the LCD backlight will turn off and exit the setting.
- 2 Or long-press the "set" key and exit the setting after the LCD backlight goes out.

**Note:** If you want to cancel the feeding of a meal, you just need to set the "Copies" number to 0.

## ■ Record

- 1 Press and hold the "REC" key; when the alarm LED is on, it will make one "beep" sound.
- 2 At this time, speak loudly to the device's microphone, and it will input your voice.
- 3 Just release the "REC" key to stop, and the device will make two "beep" sound to prompt the end of the recording.

**Note:** The recording time should not exceed 10 seconds. If the recording is not good or needs to be re-recorded, just press the "REC" key again to record.

## Manual feeding

- 1 In the un-setting state (LCD backlight is off), press and hold the "feeding" key for 3 seconds to feed. It will dispense one serving each time.

## Restore factory settings

- 1 In the setting state (LCD backlight is on), press and hold the "REC" key for 3 seconds. All settings will be cleared, and the feeder will be restored to factory settings and restart automatically.

## ▶ Feeder cleaning

- 1 Turn off the Feeder, unplug the power adapter, and take out the batteries before cleaning.
- 2 The top cover, food bucket, and food plate can be disassembled to clean. Please use clean water or a soft detergent to clean. After cleaning, It is necessary to wait for the device to dry before use.
- 3 The base and the exterior parts of the feeder body can be wiped with a dry cloth.

DO NOT PUT THEM INTO THE WATER FOR CLEANING.

## ▶ Important notes

- Low power reminder: The red alarm light will flash when the battery power is low. Please replace the battery in time for normal use.
- Only for indoor use. It is best to keep the feeder against a wall to prevent the pet from knocking it down.
- Please check whether there is enough food in the feeder and add it when required.
- If not going to use the feeder for a long time, please take out the batteries to avoid any electrolyte leakage.
- When the red alarm light is on constantly, the equipment has malfunctioned. Please check the status of the feeder.

## ▶ FCC warnings

### **WARNING:**

Changes or modifications to this unit not expressly approved.

Non-compliance could void the user's authority to operate the equipment.

### **NOTE:**

This equipment has been tested and found to comply with the limits for a Class B digital device, pursuant to Part 15 of the FCC Rules. These limits are designed to provide reasonable protection against harmful interference in a residential installation.

This equipment generates, uses and can radiate radio frequency energy and, if not installed and used in accordance with the instructions, may cause harmful interference to radio communications. However, there is no guarantee that interference will not occur in a particular installation. If this equipment does cause harmful interference to radio or television reception, which can be determined by turning the equipment off and on, the user is encouraged to try to correct the interference by one or more of the following measures:

- Reorient or relocate the receiving antenna.
- Increase the distance between the equipment and receiver.
- Connect the equipment into an outlet on a different circuit from that to which the receiver is connected.
- Consult the dealer or an experienced radio/TV technician for help.

Shielded interface cables must be used with the equipment in order to comply with the limits for a digital device pursuant to Subpart B of Part 15 of FCC Rules. Specifications and designs are subject to change without any notice or obligation on the part of the manufacturer.

## ▶ Warranty Information

### ● TWO YEAR NON-TRANSFERRABLE LIMITED WARRANTY

- To provide customers with quality shopping and user experience,we guarantee to replace or issue a refund or provide acceptable solutions to any defective products (as customers prefer)from the date of purchase to 2 year.
- Proof of purchase must be provided (Amazon order number or receipt) when making a claim to our customer support center.
- Warranty registration may be requested within a month since the date of purchase,by sending your Amazon order number to the mailbox: support @ wopetshop.com.
- The warranty is not transferable.We only provide warranty service to buyers who purchased from our Amazon store and possess the purchase proof,and not to any other purchase or subsequent owner.
- Price matching policy is not applicable.No price difference refund.

- Sellers are the responsible party. Amazon allows different sellers to sell the same product, so please confirm the seller by checking the order details before contacting us.

## ● **WHAT IS COVERED**

- Received defective or used (proof needed) products;
- Received with missing parts;
- Defective item under proper use.

## ● **WHAT IS NOT COVERED**

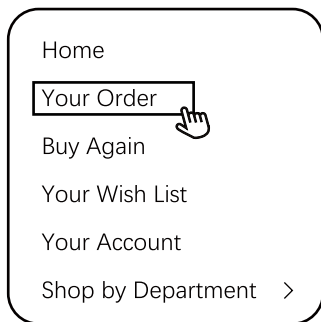
- Purchase from non-Amazon channel or other physical stores;
- Gift without proof of purchase;
- Tampering/abnormal use/accidental damage;
- Replacements and parts;
- Installation fee/labor fee.

## ● **MAKING A CLAIM**

- If you have any problems when using our products, please send an email to the mailbox: support @ wopetshop.com.
- 30 days free Return & Replacement
- 2-Year product Warranty.

# ▶ Have a Question For the Seller

## 1. Find your order



## 2. Click "View order details"



## 3. Click the Seller name



## 4. Click "Ask a question"



- Gifted parts, replacements, consumable products are not covered by the 2-year warranty
- Manufactures' warranties may not apply in all cases, depending on factors such as use of the product, where the product was purchased, or who you purchase the product from.
- Please review the warranty carefully, and contact the manufacture if you have any questions.



[support@wopetshop.com](mailto:support@wopetshop.com)



