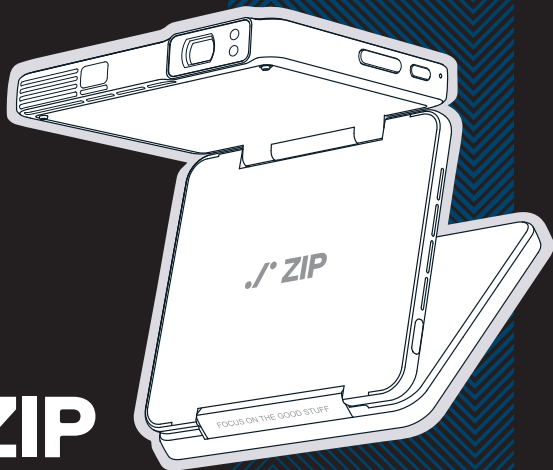


# Aurzen

# ./. ZIP

Tri-Fold Truly  
Portable Projector



## USER MANUAL

# ENGLISH ▶



Download the AurzenHub app for  
easy projector control

# CONTENTS

<b>TROUBLESHOOTING GUIDE</b>	<b>01</b>
<b>IN THE BOX</b>	<b>03</b>
<b>PRODUCT OVERVIEW</b>	<b>03</b>
<b>QUICK START</b>	<b>04</b>
1. Before Use	04
2. Power On/Off	06
3. Region Selection	06
4. Image Adjustment	07
<b>SCREEN MIRRORING</b>	<b>08</b>
For iOS Devices	08
For Android Devices	09
For Mac	10
For Windows	11
<b>BT CONNECTION</b>	<b>11</b>
<b>PROJECTION DISTANCE AND SIZE</b>	<b>12</b>
<b>SPECIFICATIONS</b>	<b>13</b>

# TROUBLESHOOTING GUIDE

1. The copyrighted content from Hulu, Netflix, and similar services can not be mirrored or cast.

- \* Copyrighted content from Netflix, Hulu, Disney +, or other similar streaming services CANNOT be wirelessly mirrored or cast due to copyright restrictions.

2. Blurry image

- \* Adjust the focus of the projector.
- \* Make sure the projection distance is in the effective focal range of the projector.
- \* Remove the dust or dirt from the lens with a soft cloth or soft-bristled brush.

3. Non-rectangular image

- \* Use the keystone correction function to adjust the image shape. Please note that this projector only supports vertical keystone correction.

4. Auto focus failure

- \* Make sure the ToF camera of the projector is not blocked.
- \* Move the projector back and forth until it is within the effective auto-focus range.

5. Auto keystone correction failure

- \* Make sure the ToF camera of the projector is not blocked.
- \* Make sure the projector is aligned horizontally with the projection surface as it only supports vertical keystone correction.

6. Factory reset

- \* On the projector's homepage, open the side menu by pressing the **OK** button on the projector, and then select **Common Settings > Factory Reset** to restore the projector to the default settings.

## 7. BT device connection

- ① Ensure your BT device is ready for a connection.
- ② On the projector's homepage, open the side menu by pressing the **OK** button on the projector, and then select **BT**. Enable BT, search for your device and pair it.

## 8. Changing language

- \* On the projector's homepage, open the side menu by pressing the **OK** button on the projector. Select **Common Settings > Languages** and choose your desired language.

## 9. Projector can't charge when turned on

- \* Ensure you are using a standard 12V/2A or higher power supply for charging.

## 10. Projector getting warm

- \* It's normal for the projector to generate heat during use. It's been tested and meets safety standards.

## 11. Noise increase in Turbo mode

- \* The noise level rises in Turbo mode due to enhanced heat dissipation performance. This is normal.

## 12. Projector search or screen mirroring failure

- \* Ensure the region setting matches your actual location. An incorrect region may cause connectivity issues. To change the region, open the side menu by pressing the **OK** button on the projector, then go to **Common Settings > Region** and choose the correct region.
- \* ZIP is compatible with iOS, macOS, Android (Samsung, Xiaomi, OnePlus, etc.), and Windows devices. It does not support Google Cast, so Pixel, Motorola phones, and Chromebooks may not be compatible for wireless casting.

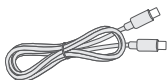
## 13. Others

- \* Feel free to contact us at [support@aurzen.com](mailto:support@aurzen.com).

## IN THE BOX



Projector

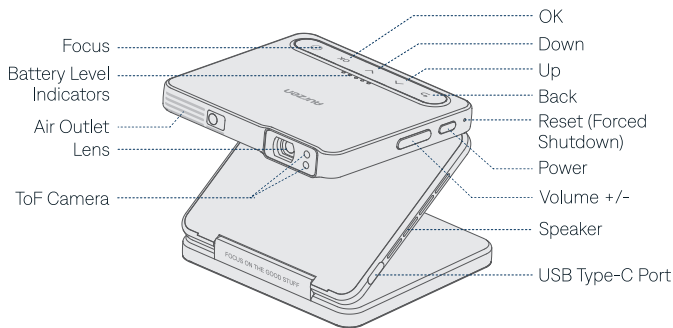


USB-C Charging Cable



User Manual

## PRODUCT OVERVIEW



Air Inlet  
(Do not block)

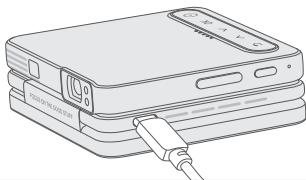




## QUICK START

### 1. Before Use

- 1 Connect the projector to a power supply using the provided charging cable. Once fully charged, you can keep it connected or unplug it.

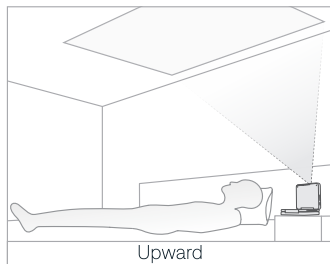
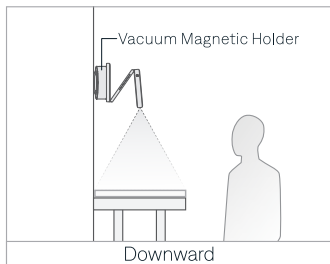
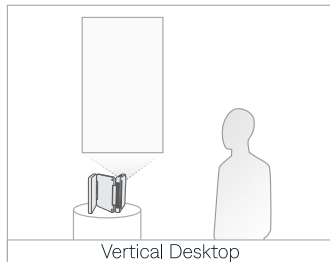
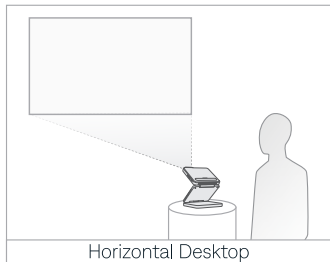


- **Charging:** Blinking white light.
- **Fast charging (12V/2A or higher power supply):** Blinking white light with a solid green light.
- **Fully charged:** All indicator lights remain solid.

#### Notes:

- \* When the projector is turned on, it needs a 12V/2A or higher power supply to charge. When off, a lower power supply can be used.
- \* More white lights indicate a higher battery level (1 light: 0-25%; 2 lights: 25-50%; 3 lights: 50-75%; 4 lights: 75-100%). Charge the projector in time when the battery is low.

- 2 Unfold the projector to your desired angle and place it on your desired surface. The projected image will automatically flip based on how the projector is positioned.

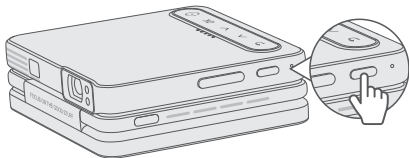


**Note:**

Do Not Overextend! Do not attempt to fully flatten ZIP, as exceeding the 90° hinge limit or forcing it into a flat position may result in irreversible damage.

## 2. Power On/Off

Press and hold the **Power Button** for 3 seconds to turn on the projector; press and hold it for 3 seconds to turn it off.



## 3. Region Selection

During the first-time setup, you will need to choose a region. Select the region that matches your current location. Note that selecting an incorrect region may impact device connectivity.

Please select your country or region

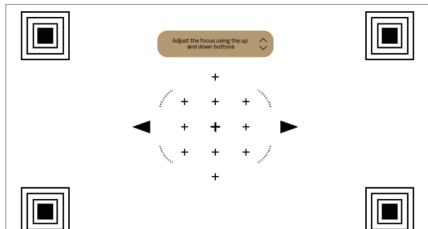
- United States
- Europe
- Argentina / Argentina
- Australia
- Brazil / Brazil
- Canada
- China Mainland / 中国大陆
- Egypt
- Hong Kong (China) / 香港(中国)

## 4. Image Adjustment

### Focus

**Auto Focus:** The projector will automatically adjust the focus when it detects shaking or movement. You can also press the **Focus** button on the projector to activate Auto Focus. If it doesn't activate immediately, press the button repeatedly until the image is clear.

**Manual Focus:** On the homepage, open the side menu by pressing the **OK** button on the projector. Select **Common Settings > Manual Focus**, and follow the on-screen instructions to adjust the focus until the image is clear.



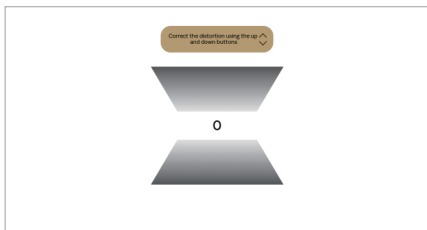
### Keystone Correction

**Tip:**

ZIP only supports  $\pm 25^\circ$  vertical keystone correction.

**Auto Keystone Correction:** The projector automatically corrects the vertical keystone distortion when it detects movement.

**Manual Keystone Correction:** On the homepage, open the side menu by pressing the **OK** button on the projector. Select **Common Settings > Keystone Correction > Manual Keystone**, and follow the on-screen instructions to correct the vertical distortion.



## SCREEN MIRRORING

### Important Notes:

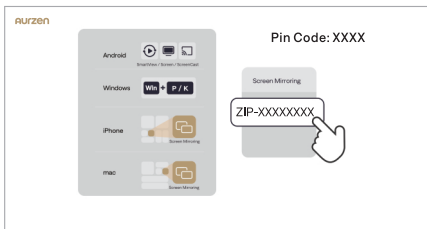
- \* ZIP does not support Google Cast, so Pixel, Motorola phones, and Chromebooks may not be compatible for wireless casting.
- \* Copyrighted content from Netflix, Hulu, Disney+, or other similar streaming services **CANNOT** be wirelessly mirrored or cast due to copyright restrictions.

### For iOS Devices

- 1 Turn on WiFi on your iOS device (a successful WiFi connection is not required).
- 2 Ensure the projector is on its homepage. Open the **Control Center** on your iOS device and select **Screen Mirroring**. Select **ZIP-XXXXXXX** from the search list to connect.



- 3 A code will appear on the projector's screen. Enter the code on your iOS device. Once connected, the content from your iOS device will be mirrored onto the screen/wall.

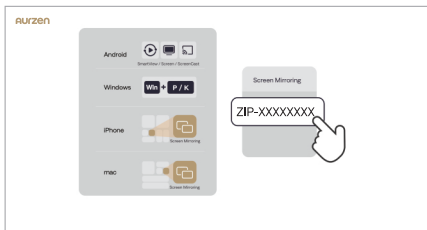


## For Android Devices

Ensure your Android device supports Multi-screen, Smart View, or Wireless Display (names may vary by device).

- 1 Turn on WiFi on your Android device (a successful WiFi connection is not required).
- 2 Ensure the projector is on its homepage. Activate the **Multi-screen/Smart View/Wireless Display** function on your Android device and search for the projector.



- 3 Select ZIP-XXXXXXXX from the search list to connect. Once connected, the content from your Android device will be mirrored onto the screen/wall.

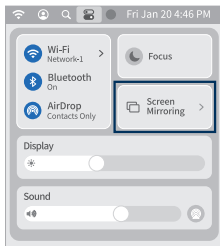


## For Mac

Ensure your Mac supports the **Screen Mirroring** feature.

- 1 Turn on WiFi on your Mac (a successful connection is not required).

- 2 Ensure the projector is on its homepage. On your Mac, click **Control Center**  in the upper right corner and select **Screen Mirroring**  .

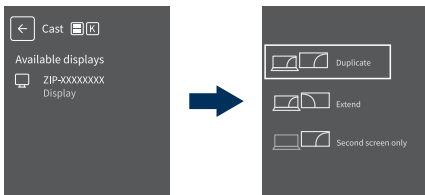


- 3 Select ZIP-XXXXXXXX from the search list to connect. Once connected, the content from your Mac will be mirrored onto the screen/wall.

## For Windows

Ensure your Windows device supports the **cast** feature.

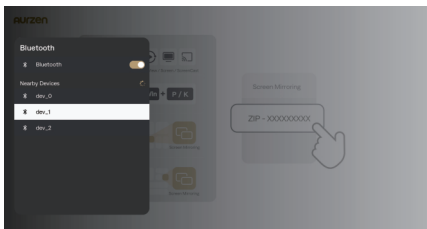
- 1 Turn on WiFi on your Windows device (a successful WiFi connection is not required).
- 2 Ensure the projector is on its homepage. Press the "**Windows Logo + K**" key combination on your keyboard to enter the **Cast** interface.
- 3 Select **ZIP-XXXXXXX** from the search list to connect. Then select **Duplicate**. Once connected, the content from your Windows device will be mirrored onto the screen/wall.



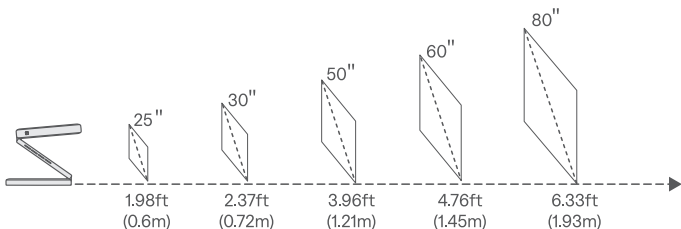
## BT CONNECTION

You can connect a BT speaker or headphones to the projector via BT.

- 1 Turn on your BT device and make it ready for a BT connection.
- 2 When the projector is on the homepage, open the side menu by pressing the **OK** button on the projector, and then select **Bluetooth**. Press **OK** to enable the function. Select your BT device from the list and pair it with the projector.



## PROJECTION DISTANCE AND SIZE



- \* For optimal image quality, we recommend a projection size of 40-60 inches. Position the projector 3.3-4.76 feet (1-1.45 meters) away from the wall or screen.
- \* The projection distance may vary depending on the content. Adjust the distance between the projector and the projection surface as needed for optimal viewing.
- \* Ambient darkness will improve the clarity of the projected images.

# SPECIFICATIONS

Display Technology	DLP
Resolution	1280 x 720P
Installation Type	Horizontal Desktop/ Vertical Desktop/Downward/ Upward
Focus	Auto & Electric/Manual
Speaker	1W x 2
Unit Dimensions	3.31 x 3.07 x 1.02 inches (84 x 78 x 26 mm)
Light Source	LED
Brightness	100 ANSI Lumens
Aspect Ratio	16:9
Keystone	±25° Vertical Keystone Correction: Auto & Electric/ Manual
Power Supply	Input (When Off): 15V --- 2A, 12V --- 2A, 9V --- 2A, 5V --- 2A Input (When On): 15V --- 2A, 12V --- 2A
Unit Net Weight	10 oz (280g)



This device complies with part 15 of the FCC Rules. Operation is subject to the following two conditions: (1) This device may not cause harmful interference, and (2) this device must accept any interference received, including interference that may cause undesired operation.

Note: This equipment has been tested and found to comply with the limits for a Class B digital device, pursuant to part 15 of the FCC rules. These limits are designed to provide reasonable protection against harmful interference in a residential installation. This equipment generates, uses and can radiate radio frequency energy and, if not installed and used in accordance with the instructions, may cause harmful interference to radio communications. However, there is no guarantee that interference will not occur in a particular installation. If this equipment does cause harmful interference to radio or television reception, which can be determined by turning the equipment off and on, the user is encouraged to try to correct the interference by one or more of the following measures:

- Reorient or relocate the receiving antenna.
- Increase the separation between the equipment and receiver.
- Connect the equipment into an outlet on a circuit different from that to which the receiver is connected.
- Consult the dealer or an experienced radio/TV technician for help.

Important: You are cautioned that changes or modifications not expressly approved by the party responsible for compliance could void the user's authority to operate the equipment.

RF Exposure Information:

- The radiated output power of this device meets the limits of FCC radio frequency exposure limits. This device should be operated with a minimum separation distance of 20cm (8 inches) between the equipment and a person's body.

### **Canada compliance statement /Conformité réglementaire canadienne :**

This device complies with Innovation, Science and Economic Development Canada license-exempt RSS standard(s). Operation is subject to the following two conditions: (1) this device may not cause interference, and (2) this device must accept any interference, including interference that may cause undesired operation of the device.

Operation in the band 5150-5250 MHz is only for indoor use to reduce the potential for harmful interference to co-channel mobile satellite systems.

Exposure to radio frequency energy:

- The radiated output power of this device meets the limits of IC radio frequency exposure limits. This device should be operated with a minimum separation distance of 20 cm (8 inches) between the equipment and a person's body.

Le présent appareil est conforme aux CNR d'Innovation, Sciences et Développement économique Canada applicables aux appareils radio exempts de licence. L'exploitation est autorisée aux deux conditions suivantes : (1) l'appareil ne doit pas produire de brouillage, et (2) l'utilisateur de l'appareil doit accepter tout brouillage radioélectrique subi, même si le brouillage est susceptible d'en compromettre le fonctionnement.

La bande 5150-5250 MHz est réservée uniquement pour une utilisation à l'intérieur afin de réduire les risques de brouillage préjudiciable aux systèmes de satellites mobiles utilisant les mêmes canaux.

L'exposition à l'énergie radiofréquence:

- La puissance de sortie rayonné de cet appareil est conforme aux limites de la IC limites d'exposition aux fréquences radio. Cet appareil doit être utilisé avec une distance minimale de séparation de 20 cm entre l'appareil et le corps d'une personne.

CAN ICES (B) / NMB (B)

EU compliance statement :



Hereby, Shenzhen Neutop Optoelectronics Co., Ltd. declares that this radio equipment is in compliance with Directive 2014/53/EU. The full text of the EU declaration of conformity is available at the following internet address:

[https://aurzen.s3.us-west-1.amazonaws.com/resource/doc/Zip\\_Declaration\\_of\\_Conformity.pdf](https://aurzen.s3.us-west-1.amazonaws.com/resource/doc/Zip_Declaration_of_Conformity.pdf)

The below radio frequency specification only apply to EU and UK regions:

	Frequency Range	Transmit Power (EIRP)
Wi-Fi 2.4G/BT	2400-2483.5MHz	<20dBm
Wi-Fi 5G	5150-5250MHz	<23dBm
	5725-5850MHz	<14dBm

Note:

- Under normal use of condition, this equipment should be kept a separation distance of at least 20 cm between the antenna and the body of the user.
- This device is restricted to indoor use when operating in the 5150 to 5350 MHz frequency range.



## RECYCLING

All products bearing this symbol are waste electrical and electronic equipment (WEEE as in directive 2012/19/EU) which should not be mixed with unsorted household waste. Instead, you should protect human health and the environment by handing over your waste equipment to a designated collection point for the recycling of waste electrical and electronic equipment, appointed by the government or local authorities. Correct disposal and recycling will help prevent potential negative consequences to the environment and human health. Please contact the installer or local authorities for more information about the location as well as terms and conditions of such collection points.



This marking on battery, manual or packaging indicates that the batteries in this product should not be disposed of with other household waste at the end of their working life. If batteries are not properly disposed of, these substances can cause harm to human health or the environment.

To protect natural resources and to promote material reuse, please separate batteries from other types of waste and recycle them through your local, free battery return system.

## CAUTION

- Risk of explosion if the battery is replaced by an incorrect type.
- Disposal of a battery into fire or a hot oven, or mechanically crushing or cutting of a battery, that can result in an explosion.
- Leaving a battery in an extremely high temperature surrounding environment that can result in an explosion or the leakage of flammable liquid or gas.
- A battery subjected to extremely low air pressure that may result in an explosion or the leakage of flammable liquid or gas.



The symbol indicates class II equipment



The symbol indicates AC voltage



The symbol indicates DC voltage



For indoor use only



The exclamation point within an equilateral triangle is intended to alert the user to the presence of important operating and maintenance (servicing) instructions in the literature accompanying the appliance.

The product complies with "RG1 IEC/EN 62471-5:2015".

The product label and certification information are located at the bottom of the product.

# CONTACT US



## Email

North America/United Kingdom: [support@aurzen.com](mailto:support@aurzen.com)

Europe: [support.eu@aurzen.com](mailto:support.eu@aurzen.com)

日本: [support.jp@aurzen.com](mailto:support.jp@aurzen.com)



## Phone

+1-667-218-4830 (Mon-Fri, 9:00 to 17:00 EST)

\*If you need assistance outside these hours, please email us for assistance.