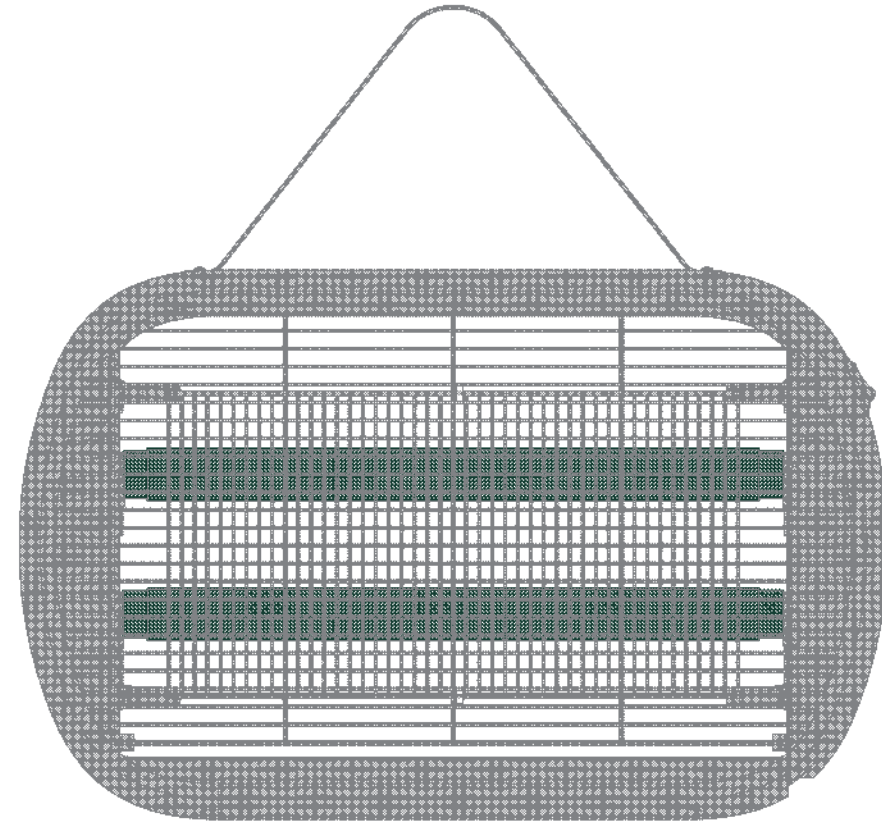




Zapping for a Cozier and Greener Life



At Buzbug we are devoted to a **greener future** as pioneers in **energy conservation** for the pest control industry. Going a step further, we actively participate in **carbon offset** projects and **tree planting** initiatives, dedicating ourselves to the cause of a greener planet.

Before Using

Q.1
Is it warm when turned on?

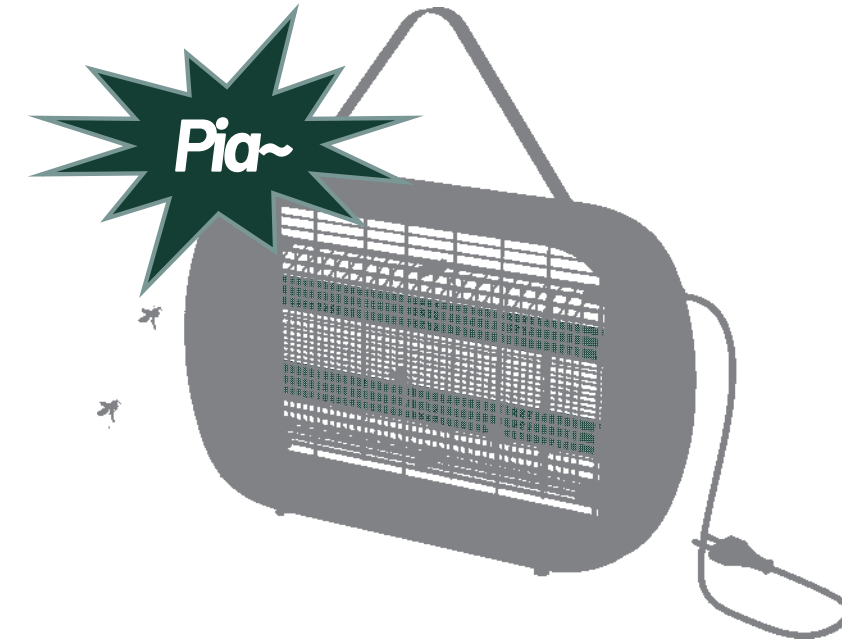
We use a blacklight bulb, thus the gadget itself does not generate heat. The bulbs warm up to the same temperature as ordinary fluorescent lamps.

Q.2
Is this bug zapper waterproof?

The product is not waterproof. Please refrain from using it outdoors during rainy conditions, and avoid rinsing the product with water to ensure its proper functionality and safety.

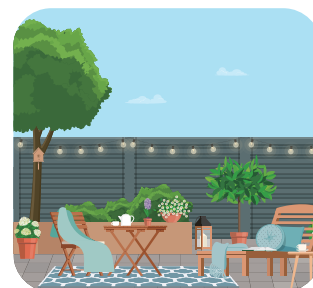
Q.3
How loud does it sound when killing insects?

The electronic insect killer's operating premise is to eliminate mosquitoes instantaneously by electrostatic shock; therefore the sound is inevitable; as the mosquitoes touch the mesh, there will be an electric shock sound.



Buzbug Guarantees 100% Satisfaction To Every Customer

Visit **buzbug.com** to chat with a live representative, or email **support@buzbug.com** for assistance and inquiries. This product is covered in a **12-month warranty** program.



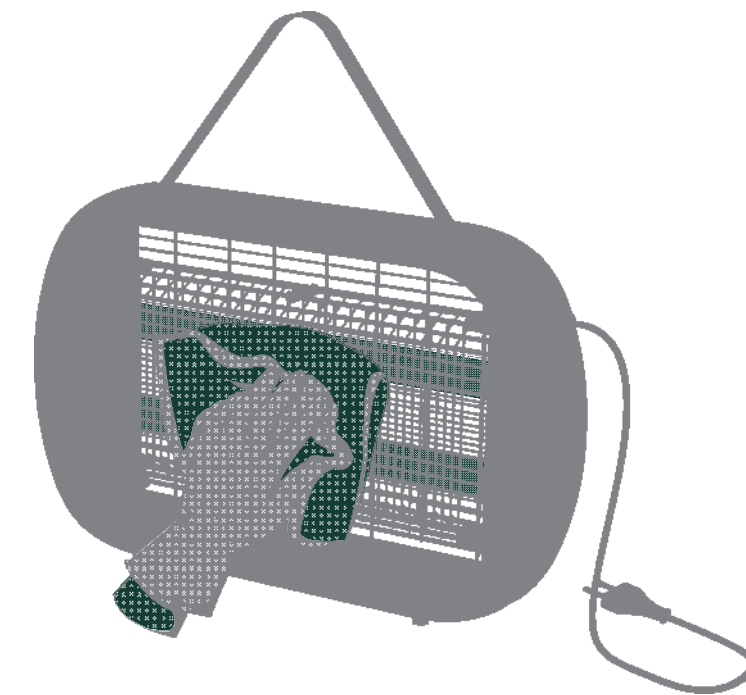
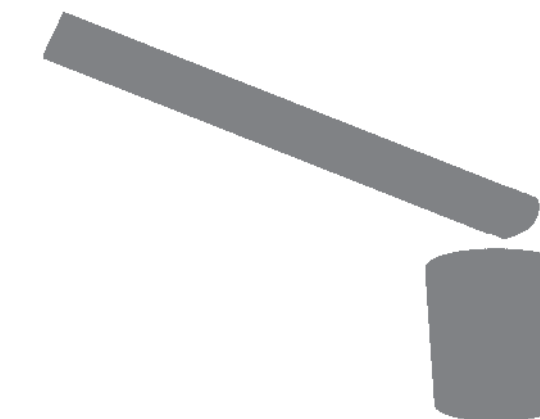
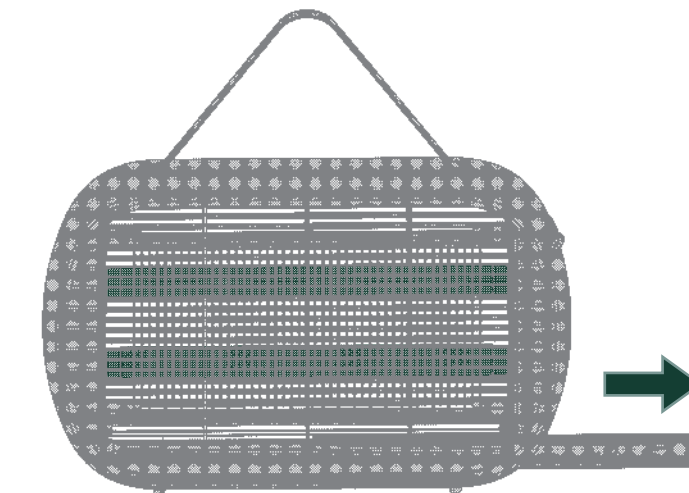
Q.4
Can I use it when I have my pets in the apartment? Is it safe?

It is safe and helpful to the environment to use as a non-toxic option in homes, workplaces, food preparation rooms, and other indoor locations. The device is also equipped with a protective grid to keep your kids and pets free of the internal electrified grid.

Q.5
How to clean?

The buildup of dead insects can reduce the product's effectiveness and may even cause continuous electrical discharges, leading to product failure. Please clear the collection tray and the grid once a week.

To begin, unplug the device. As there might be a residual charge immediately after unplugging, please allow at least one minute before cleaning. Then, at the bottom of the unit, remove the washable metal tray that collects dead insects, slide the insects into the trash, and rinse and dry the tray if necessary.



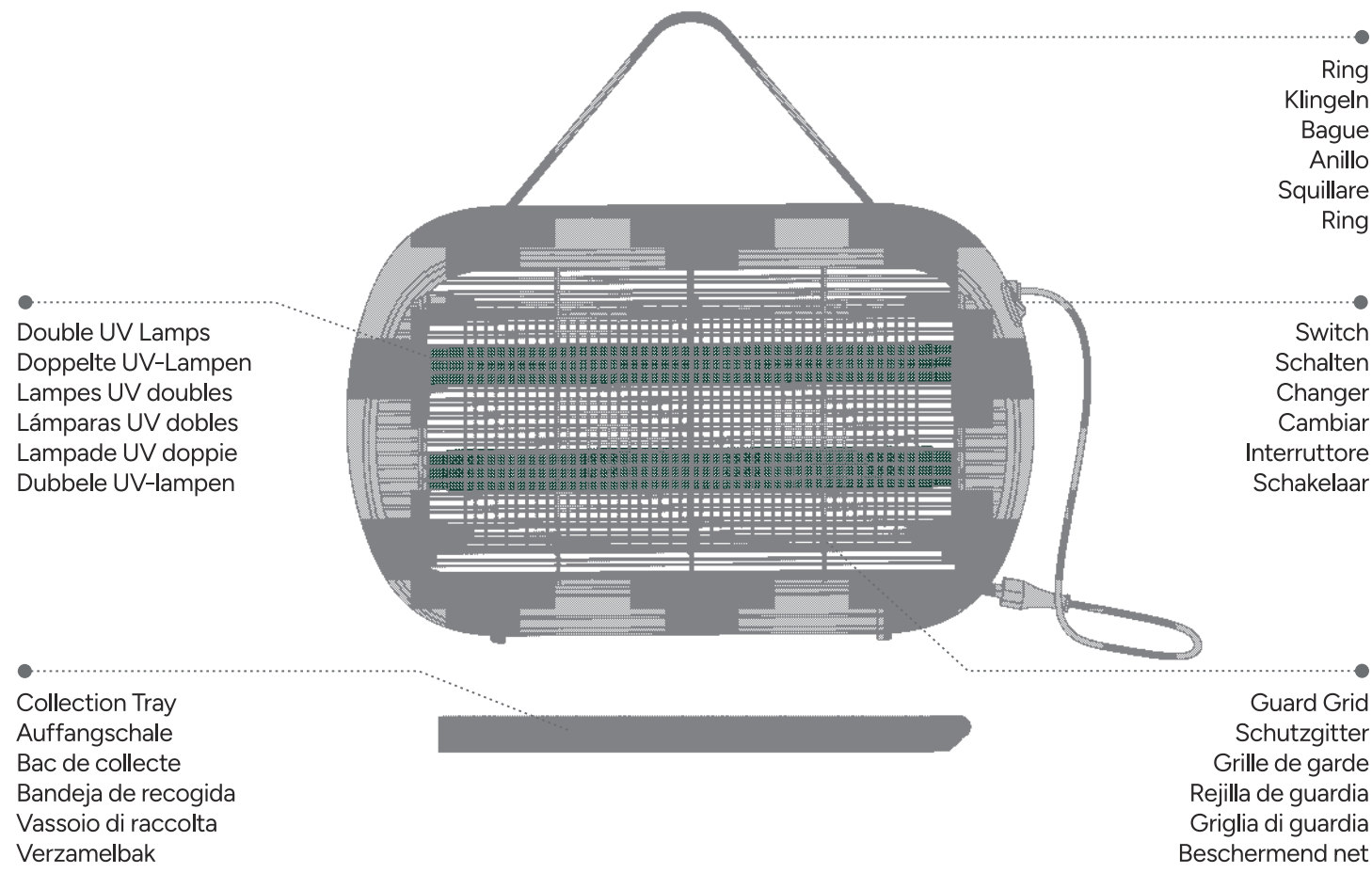
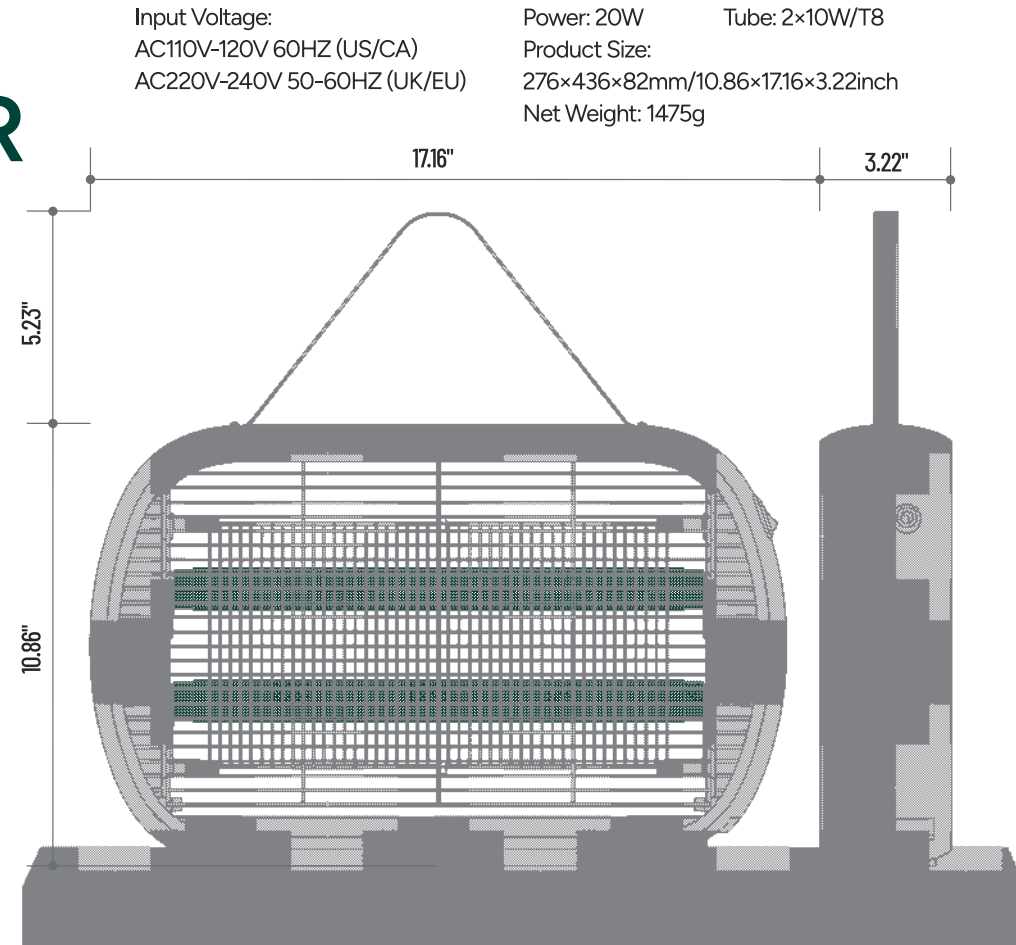
BUZBUG BUG ZAPPER 20W

Buzbug Insektenvernichter 20W
Buzbug Éliminateur d'insectes 20 W
Buzbug Exterminador de insectos 20W
Buzbug Disinfestatore di insetti 20W
Buzbug Insectenverdelger 20W

MA-015

User Manual

English / Deutsch / Français / Español /
Italiano / Nederlands



FCC STATEMENT:

Any changes or modifications not expressly approved by the party responsible for compliance could void the user's authority to operate the equipment.
This device complies with part 15 of the FCC Rules. Operation is subject to the following two conditions: (1) this device may not cause harmful interference, and (2) this device must accept any interference received, including interference that may cause undesired operation.

Note:

This equipment has been tested and found to comply with the limits for a Class B digital device, pursuant to part 15 of the FCC Rules. These limits are designed to provide reasonable protection against harmful interference in a residential installation. This equipment generates uses and can radiate radio frequency energy and if not installed and used in accordance with the instructions, may cause harmful interference to radio communications. However, there is no guarantee that interference will not occur in a particular installation. If this equipment does cause harmful interference to radio or television reception, which can be determined by turning the equipment off and on, the user is encouraged to try to correct the interference by one or more of the following measures:

- Reorient or relocate the receiving antenna.
- Increase the separation between the equipment and receiver.
- Connect the equipment into an outlet on a circuit different from that to which the receiver is connected.
- Consult the dealer or an experienced radio/TV technician for help.

CORRECT DISPOSAL OF THIS PRODUCT

(Waste Electrical & Electronic Equipment)
This marking shown on the product or its literature, indicate that it should not be disposed with other household wastes at the end of its working life.

To prevent possible harm to the environment or human health from uncontrolled waste disposal, please separate this from other types of wastes and recycle it responsibly to promote the sustainable reuse of material resources. Household user should contact either the retailer where they purchased this product or their local government office, for details of where and how they can take this item for environmentally safe recycling.

Business users should contact their supplier and check the terms and conditions of the purchase contact. This product should not be mixed with other commercial wastes for disposal.

Manufacturer: Foshan OSA Electrical Co., Ltd.
Address: Jiangcun Bridge Side, Longzhou Rd, Leliu Town, Shunde, Foshan City, Guangdong, 528322, China

EC	REP	UAB Qixiang Europe Pranciškonų g. 6-46, LT-01133 Vilnius, Lithuania Technical Information Center Geschwister-Scholl-Str. 73, 60488 Frankfurt, Germany Email: qixiang_europe@gmail.com Phone: +49 6976 895074
UK	REP	CET Product Service Ltd. Beacon House Stokenchurch Business Park, Ibstone Rd, Stokenchurch High Wycombe HP14 3FE UK Email: info.cetservice@gmail.com Phone: +44 741 932 5266

EN ▶

Installation & Cleaning:

- This device can be wall-mounted or used free standing (on a solid surface).
- Place the removable, washable plastic tray on the bottom of the unit to collect any dead insects as they fall.
- When the collection tray is full, always switch off the device first, then remove the tray and slide the insects into the trash, and then use a soft dry brush to clean the grid.
- We recommend that UV bulbs be changed every 12 months to ensure maximum efficiency.

⚠ Warning

- High Voltage: The Electronic Indoor Insect Killer Operates at Standard Voltage (US/CA: AC110-120V; UK/EU: AC220-240V). Check the local voltage before operating.
- This device emits high-voltage on contact with the metal grid. Do not attempt to touch the internal high voltage grids during use. Never put metal objects into the grid while in operation.
- Keep away from children.
- Keep away from flammable, gas, oil and explosive materials.
- Always cut off the power and unplug the device before cleaning or changing the bulbs. There might be a residual charge immediately after unplugging, wait at least ONE MINUTE before replacing the bulbs to fully discharge the unit.
- If damaged, supply cords must be repaired or replaced by a qualified technician. Contact the manufacturer for warranty or repair information.

DE ▶

Installation & Reinigung:

- Dieses Gerät kann an der Wand montiert oder freistehend (auf einer festen Oberfläche) verwendet werden.
- Legen Sie das abnehmbare, waschbare Kunststoff-Fach auf den Boden des Geräts auf, um tote Insekten zu sammeln, während sie fallen.
- Wenn das Sammelschalenfach voll ist, schalten Sie das Gerät immer zuerst aus, dann entfernen Sie das Fach und schieben Sie die Insekten in den Müll und verwenden Sie dann eine weiche Trockenbürste, um das Gitter zu reinigen.
- Wir empfehlen, dass UV-Glühlampen alle 12 Monate geändert werden, um die maximale Effizienz sicherzustellen.

⚠ Warnung

- Hochspannung: Der elektronische Indoor-Insekten-Killer arbeitet bei Standardspannung (US/CA: AC110-120V; UK/EU: AC220-240V). Überprüfen Sie die lokale Spannung vor dem Betrieb.
- Dieses Gerät emittiert auf den Kontakt mit dem Metallgitter mit hoher Spannung. Versuchen Sie nicht, die internen Hochspannungsgitter während des Gebrauchs zu berühren. Legen Sie niemals Metallobjekte in das Gitter in Betrieb.
- Halten Sie sich von Kindern fern.
- Halten Sie sich von brennbaren, Gas-, Öl- und Sprengstoffmaterialien fern.
- Schneiden Sie immer die Stromversorgung ab und ziehen Sie das Gerät, bevor Sie die Glühlampen reinigen oder ändern. Es kann unmittelbar nach dem Abziehen eine Restladung sein, warten Sie mindestens eine Minute, bevor Sie die Lampen ersetzen, um das Gerät vollständig abzulassen.
- Bei Beschädigungen müssen Versorgungskabel repariert oder durch einen qualifizierten Techniker ersetzt werden. Wenden Sie sich an den Hersteller, um Garantie- oder Reparaturinformationen zu erhalten.

FR ▶

Installation et nettoyage:

- Cet appareil peut être monté sur mur ou utilisé de manière sécurisée (sur une surface solide).
- Placez le plateau en plastique amovible et lavable situé au bas de l'appareil pour collecter des insectes morts au fur et à mesure qu'ils tombent.
- Lorsque le bac de collecte est plein, éteignez toujours le périphérique, puis retirez le plateau et faites glisser les insectes dans la corbeille, puis utilisez une brosse sèche douce pour nettoyer la grille.
- Nous recommandons que les ampoules UV soient changées tous les 12 mois pour assurer une efficacité maximale.

⚠ Avertissement

- Haute tension : le tueur électronique d'insectes d'intérieur fonctionne à une tension standard (US/CA : AC110-120V ; UK/EU : AC220-240V). Royaume-Uni / UE: AC220-240V). Vérifiez la tension locale avant de fonctionner.
- Cet appareil émet une haute tension au contact de la grille métallique. N'essayez pas de toucher les grilles haute tension internes pendant l'utilisation. Ne mettez jamais d'objets en métal dans la grille pendant le fonctionnement.
- Tenir à l'écart des enfants.
- Tenir à l'écart des matériaux inflammables, gaz, pétrole et explosifs.
- Toujours couper la puissance et débranchez-le avant de nettoyer ou de changer les ampoules. Il pourrait y avoir une charge résiduelle immédiatement après avoir débranché, attendez au moins une minute avant de remplacer les ampoules pour décharger complètement l'unité.
- Si des cordons d'alimentation endommagés doivent être réparés ou remplacés par un technicien qualifié. Contactez le fabricant pour obtenir des informations de garantie ou de réparation.

ES ▶

Instalación y limpieza:

- Este dispositivo puede estar montado en la pared o usado independiente (en una superficie sólida).
- Coloque la bandeja de plástico extraíble y lavable en la parte inferior de la unidad para recoger a los insectos muertos a medida que caen.
- Cuando la bandeja de la recolección esté llena, siempre apague primero el dispositivo, luego retire la bandeja y deslice los insectos en la basura, y luego use un cepillo seco suave para limpiar la cuadrícula.
- Recomendamos que las bombillas UV se cambien cada 12 meses para garantizar la máxima eficiencia.

⚠ Advertencia

- Alto voltaje: el asesino de insectos de interior electrónico funciona en el voltaje estándar (US/CA: AC110-120V; Reino Unido/UE: AC220-240V). Compruebe el voltaje local antes de operar.
- Este dispositivo emite alto voltaje en contacto con la cuadrícula de metal. No intente tocar las redes internas de alto voltaje durante el uso. Nunca coloque objetos metálicos en la cuadrícula mientras está en funcionamiento.
- Manténgase alejado de los niños.
- Manténgase alejado de los materiales inflamables, de gas, petróleo y explosivos.
- Siempre corte la alimentación y desenchufe el dispositivo antes de limpiar o cambiar las bombillas. Puede haber una carga residual inmediatamente después de desenchufar, espere al menos un minuto antes de reemplazar las bombillas para descargar completamente la unidad.
- Si está dañado, los cables de suministro deben ser reparados o reemplazados por un técnico calificado. Póngase en contacto con el fabricante para obtener información sobre garantía o reparación.

IT ▶

Installazione e pulizia :

- Questo dispositivo può essere montato a parete o indipendente daparete (su una superficie solida).
- Posizionare il vassoio di plastica rimovibile e lavabile sul fondo dell'unità per raccogliere gli insetti morti mentre cadono.
- Quando il vassoio di raccolta è pieno, spegnere sempre il dispositivo, quindi rimuovere il vassoio e far scorrere gli insetti nella spazzatura, quindi utilizzare un pennello morbido secco per pulire la griglia.
- Si consiglia di modificare le lampadine UV ogni 12 mesi per garantire la massima efficienza.

⚠ Avvertenze

- Alta tensione: l'assassino per insetti per interni elettronici funziona a tensione standard (US/CA: AC110-120V;UK/UE: AC220-240V). Controllare la tensione locale prima di funzionare.
- Questo dispositivo emette ad alta tensione a contatto con la griglia metallica. Non tentare di toccare le griglie interne ad alta tensione durante l'uso. Non mettere mai oggetti metallici nella griglia mentre è in funzione.
- Tenere lontano dai bambini.
- Tenere lontano da materiali infiammabili, gas, petrolio e esplosivi.
- Tagliare sempre la potenza e scollegare il dispositivo prima di pulire o modificare le lampadine. Potrebbe esserci una carica residua immediatamente dopo aver scollegato, attendere almeno un minuto prima di sostituire le lampadine per scaricare completamente l'unità.
- Se danneggiato, i cavi di alimentazione devono essere riparati o sostituiti da un tecnico qualificato. Contattare il produttore per le informazioni sulla garanzia o di riparazione.

NL ▶

Installatie en reiniging:

- Dit apparaat kan aan de muur worden bevestigd of vrijstaand worden gebruikt (op een stevig oppervlak).
- Plaats de verwijderbare, wasbare plastic lade op de bodem van het apparaat om dode insecten op te vangen als ze vallen.
- Wanneer de opvangbak vol is, schakelt u het apparaat altijd eerst uit, verwijdert u de lade en schuift u de insecten in de prullenbak. Gebruik vervolgens een zachte, droge borstel om het rooster schoon te maken.
- Wij raden aan om UV-lampen elke 12 maanden te vervangen om maximale efficiëntie te garanderen.

⚠ Waarschuwing

- Hoge spanning: de elektronische insectenverdelger voor binnen werkt op standaardspanning (US/CA: AC110-120V; UK/EU: AC220-240V). Controleer de lokale spanning voordat u het apparaat gebruikt.
- Dit apparaat geeft een hoge spanning af bij contact met het metalen rooster. Probeer de interne hoogspanningsroosters niet aan te raken tijdens gebruik. Plaats nooit metalen voorwerpen in het rooster terwijl het apparaat in werking is.
- Buiten bereik van kinderen houden.
- Buiten bereik van ontvlambare, gas-, olie- en explosieve materialen houden.
- Schakel altijd de stroom uit en haal de stekker uit het stopcontact voordat u het apparaat schoonmaakt of de lampen vervangt. Er kan direct na het loskoppelen een restlading aanwezig zijn. Wacht ten minste EÉN MINUUT voordat u de lampen vervangt om het apparaat volledig te ontladen.
- Als de voedingskabels beschadigd zijn, moeten ze worden gerepareerd of vervangen door een gekwalificeerde technicus. Neem contact op met de fabrikant voor garantie- of reparatie-informatie.