

Hand Blender

User's manual

EN



SENCOR®

SHB 3320WH / SHB 3321BL
SHB 3322GR / SHB 3323OR
SHB 3324RD / SHB 3325VT
SHB 3326YL / SHB 3327TQ
SHB 3328RS

Prior to using this appliance, please read the user's manual thoroughly, even in cases, when one has already familiarised themselves with previous use of similar types of appliances. Only use the appliance in the manner described in this user's manual. Keep this manual for future use.

We recommend saving the original shipping cardboard box, packaging material, receipt and warranty card for the duration of the warranty. In the case of transportation, pack the appliance using the original packaging materials only.

EN-1

CONTENTS


IMPORTANT SAFETY INSTRUCTIONS	3
DESCRIPTION OF THE APPLIANCE	5
BEFORE FIRST USE	6
ATTACHING AND REMOVING THE BLENDING ATTACHMENT.....	6
USING THE APPLIANCE.....	6
ADVICE AND TIPS FOR BLENDING	7
QUICK GUIDE TO BLENDING	8
CLEANING AND MAINTENANCE.....	8
TECHNICAL SPECIFICATIONS	9
INSTRUCTIONS AND INFORMATION REGARDING THE DISPOSAL OF USED PACKAGING MATERIALS	9
DISPOSAL OF USED ELECTRICAL AND ELECTRONIC APPLIANCES.....	9

IMPORTANT SAFETY INSTRUCTIONS

- This appliance may be used by persons with physical or mental impairments or by inexperienced persons if they are properly supervised or have been informed about how to use of the product in a safe manner and understand the potential dangers.
- Children must not use this appliance or play with it. Keep the appliance and its power cord out of their reach.

IMPORTANT SAFETY MEASURES

READ CAREFULLY AND STORE THESE INSTRUCTIONS FOR FUTURE USE.

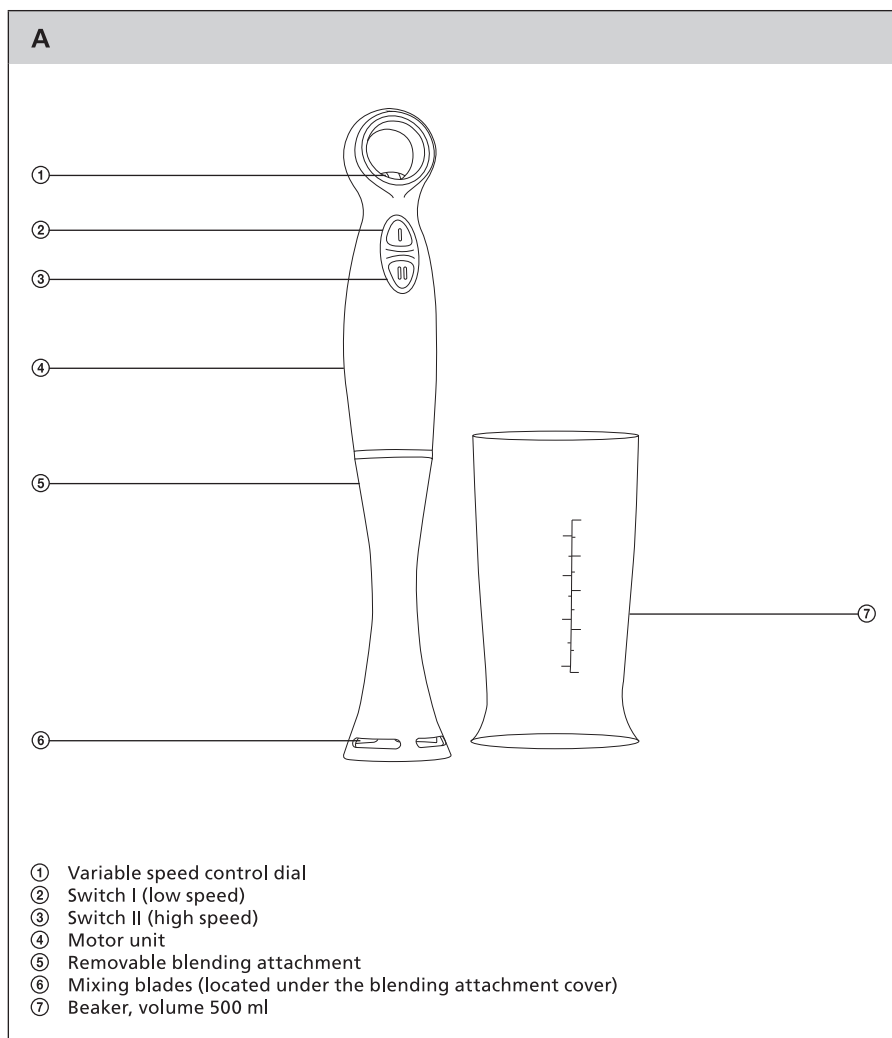
- Before connecting this appliance to a power socket, make sure the voltage stated on the label of the appliance corresponds to the voltage in your power socket.
- Never use the appliance in the near vicinity of a bath, shower or swimming pool. 
- Never use accessories, which have not been supplied with this appliance or which are not designed for this appliance.
- Do not place the appliance on window sills.
- Make sure that the power cord and plug cannot get in contact with water or dampness.
- Always place the appliance on an even and stable surface.
- Do not pour water or any other liquids into the appliance.
- Always disconnect the appliance from the power socket if you will be leaving it without supervision and before assembly, disassembly or cleaning.
- The appliance is designed only for household use and constructed for processing the usual amount of food in a household.
- Do not use the appliance in an industrial environment or outdoors!
- Do not use sprays in the vicinity of the appliance.
- If you will not be using the appliance, disconnect from the power grid and store it outside the reach of children.
- Do not place the product on or near an electric or gas stove. Do not place it near an open fire or other appliances or equipment that are a source of heat.
- Do not use the appliance if it has a damaged power cord or power plug.
- If the power cord is damaged, have it replaced at an specialised company/service centre.
- In no case should you attempt to repair the appliance yourself; do not make any amendments to it – danger of injury by electrical shock! Entrust all repairs and adjustments to a specialised company/service. Failure to do so will expose you to the risk of voiding the warranty policy.
- Do not place the power cord of the appliance near hot places or over sharp objects. Do not place heavy items on the power cord. Make sure the power cord does not hang over the edge of a table and that it is not touching a hot surface.
- Do not disconnect the appliance from the power socket by pulling the power cord – it may damage the power cord/power socket. Disconnect the cable from the power socket by gently pulling the plug of the electric cable.
- Do not use the appliance for any other purposes than those intended.
- Before attaching attachments to the appliance, removing or replacing them, ensure that the appliance is turned off and disconnected from the power socket.
- Do not start the appliance unless the bottom removable part is properly attached to the motor unit. Do not turn on the appliance without a load. Incorrect use of the appliance may negatively affect its lifetime.
- Do not put your hands into the beaker while the appliance is in operation.
- Do not place things that are not intended to be blended into the beaker.
- Process hot food in small batches – there is a risk of this food splattering out or overflowing. Always allow food that is too hot to cool down to at least 60 °C before blending.
- Never use the blender for blending food on a hot hotplate or gas stove.
- The operating time of the appliance is 1 minute. After one minute, interrupt the operation of the appliance for at least two minutes. If you are using the blender to blend sticky or hard food, we recommend that you interrupt operation after 20 seconds and start it again after at least two minutes.
- **Attention!** The appliance's mixing blades are sharp! Under no circumstances should you touch them when the appliance is in operation!

Hand Blender

SHB 3320WH / SHB 3321BL / SHB 3322GR / SHB 3323OR / SHB 3324RD / SHB 3325VT / SHB 3326YL / SHB 3327TQ / SHB 3328RS

EN

DESCRIPTION OF THE APPLIANCE



EN-5

Hand Blender

SHB 3320VWH / SHB 3321BL / SHB 3322GR / SHB 3323OR / SHB 3324RD / SHB 3325VT / SHB 3326YL / SHB 3327TQ / SHB 3328RS

BEFORE FIRST USE

1. Take the appliance and its accessories out of the packaging materials.
2. Thoroughly wash the removable blending attachment A⑤ and the beaker A⑦ with hot water and kitchen washing detergent. Thoroughly rinse these parts with drinking water and dry thoroughly.



Attention:

Make sure that no water remains in the blending attachment A⑤, which could enter into the motor unit A④ when the appliance is assembled and cause damage to it.

ATTACHING AND REMOVING THE BLENDING ATTACHMENT

1. Place the blending attachment A⑤ against the motor unit A④ and attach it by turning it in the direction of the closed padlock symbol marked on the appliance.
2. To disassemble the blender, use one hand to hold the motor unit A④ and the other to turn the blending attachment A⑤ in the direction of the open padlock symbol marked on the appliance and take it off.

B

USING THE APPLIANCE

1. This blender is designed for blending spreads, mayonnaises, fruit- or milkshakes, sauces, baby food, purée, etc.
2. Place the ingredients that you wish to blend into the beaker A⑦ or another suitable container.
3. Connect the power cord to an el. power socket. Hold the blender by the motor unit A④ and submerge the blending attachment A⑤ into the container with the ingredients.
4. To turn on the blender, press switch I A② or II A③. The blender will run while switch I A② or II A③ is pressed. For safety reasons the blender will turn off when switch I A② or II A③ is released.

Hand Blender

SHB 3320WH / SHB 3321BL / SHB 3322GR / SHB 3323OR / SHB 3324RD / SHB 3325VT / SHB 3326YL / SHB 3327TQ / SHB 3328RS

EN



Attention:

The maximum operating time of the blender is 1 minute. After one minute, interrupt the operation of the appliance for at least 2 minutes.

If you are using the blender to blend sticky or hard food, reduce the operating time to 20 seconds.

- Control dial A① is used to variably control the motor speed. Turning control dial A① in the direction of the front panel of the blender will reduce the speed of the motor, turning it in the opposite direction will increase its speed. Speed can only be controlled when using switch I A②.
- If you will not be using the blender, disconnect it from the power socket.

ADVICE AND TIPS FOR BLENDING

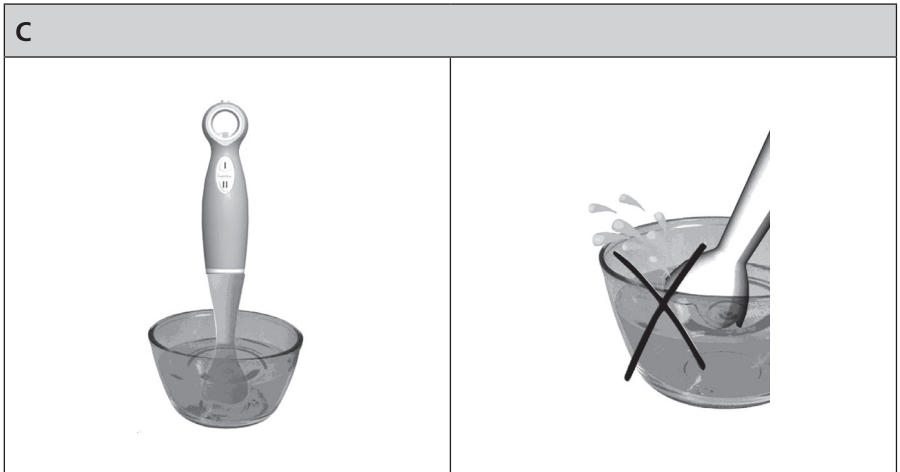
- Cut food into smaller pieces before blending it. Separate larger amounts of food into several smaller batches.
- The volume of some liquids increases when they are blended and for this reason only fill the beaker A⑦ to $\frac{3}{4}$ of its capacity. The maximum capacity of the beaker is indicated by the 500 ml mark.



Attention:

Do not use the blender for mixing ice cubes or coffee beans. Otherwise the mixing blades A⑥ could be damaged.

- When blending, hold the blender so that the blending attachment A⑤ is pointing perpendicular to the bottom of the beaker. Ensure that the mixing blades A⑥ remain submerged in the processed ingredients during the entire blending process. Otherwise ingredients could splatter out of the beaker.



Hand Blender

SHB 3320WH / SHB 3321BL / SHB 3322GR / SHB 3323OR / SHB 3324RD / SHB 3325VT / SHB 3326YL / SHB 3327TQ / SHB 3328RS

- You will achieve evenly blended ingredients when you move the blending attachment A⑤ in a circular motion. If the ingredients stick to the mixing blades A⑥ or the walls of the beaker A⑦, stop the blending process. Disconnect the blender from the power socket. Use a spatula to clean the walls of the beaker A⑦ and the mixing blades A⑥. Then reconnect the blender to the power socket and you can continue processing the ingredients.
- The beaker A⑦ is supplied with a lid so that you can store unconsumed food in the refrigerator.

QUICK GUIDE TO BLENDING

Food type	Amount	Processing time	Selecting a speed
Baby food, sauces	200–300 g	45 s	Low speed
Shakes	300 ml	30 s	High speed
Fruit, vegetables	200 g	45 s	Low speed
Cheeses	100 g	30 s	Low speed



Note:

The times provided above are only a reference. The actual processing time depends on how thoroughly the ingredients are to be blended.

CLEANING AND MAINTENANCE

- Clean the blender after each use.
- First remove food remains that have stuck to the mixing blades A⑥. Submerge attachment A⑤ in hot warm water with a neutral kitchen detergent and turn the blender on for a while. This will remove the large food remains from the mixing blades A⑥. Disconnect the blender from the power socket before further cleaning.
- Take off the blending attachment A⑤. Rinse it under clean running water and dry thoroughly or wash it in a dishwasher.



Attention:

Make sure that no water remains in the blending attachment A⑤, which could enter into the motor unit A④ when the appliance is assembled and cause damage to it.

- Wipe the motor unit A④ with a lightly damp cloth and then dry it.



Attention:

The motor unit A④ must not be submerged in water or any other liquid.

- The blending beaker A⑦ and its lid can be washed under running water with the use of a neutral kitchen detergent or in a dishwasher.
- Do not use abrasive cleaning products, petrol, solvents, etc. for cleaning.

Hand Blender

SHB 3320WH / SHB 3321BL / SHB 3322GR / SHB 3323OR / SHB 3324RD / SHB 3325VT / SHB 3326YL / SHB 3327TQ / SHB 3328RS

EN

TECHNICAL SPECIFICATIONS

Nominal voltage range.....	220–240 V
Nominal frequency.....	50/60 Hz
Rated power input.....	400 W
Safety class (for electric shock protection)	II
Noise level.....	53 dB (A)

The declared noise emission level of the appliance is 53 dB (A), which represents a level A of acoustic power with respect to a reference acoustic power of 1 pW.

Glossary of technical terms

Safety class for electric shock protection:

Class II – Electric shock protection is provided by double or heavy-duty insulation.

Changes to text and technical parameters are reserved.

INSTRUCTIONS AND INFORMATION REGARDING THE DISPOSAL OF USED PACKAGING MATERIALS

Dispose of packaging material at a public waste disposal site.

DISPOSAL OF USED ELECTRICAL AND ELECTRONIC APPLIANCES



The meaning of the symbol on the product, its accessory or packaging indicates that this product shall not be treated as household waste. Please, dispose of this product at your applicable collection point for the recycling of electrical & electronic equipment waste. Alternatively in some states of the European Union or other European states you may return your products to your local retailer when buying an equivalent new product. The correct disposal of this product will help save valuable natural resources and help in preventing the potential negative impact on the environment and human health, which could be caused as a result of improper liquidation of waste. Please ask your local authorities or the nearest waste collection centre for further details. The improper disposal of this type of waste may fall subject to national regulations for fines.

For business entities in the European Union

If you wish to dispose of an electrical or electronic device, request the necessary information from your seller or supplier.

Disposal in other countries outside the European Union

If you wish to dispose of this product, request the necessary information about the correct disposal method from local government departments or from your seller.



This product meets all the basic EU regulation requirements that relate to it.

Hand Blender

SHB 3320WH / SHB 3321BL / SHB 3322GR / SHB 3323OR / SHB 3324RD / SHB 3325VT / SHB 3326YL / SHB 3327TQ / SHB 3328RS