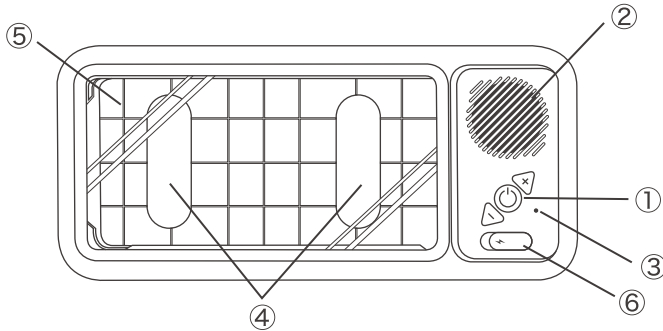


Z07 mobile phone waterproof stand instruction manual



- ① button
- ② Waterproof speaker
- ③ MIC call receiving hole
- ④ Fix the sponge
- ⑤ PET touch panel
- ⑥ Charging port (When charging, a red light will be displayed; when fully charged, a green light will be displayed.)

Button operation

Project	Button	working status	Indicator	Function
Power ON		Short press for 1 second to power on	Red and blue lights flashing	Power on [Indicator light turns off when connection is complete]
Power OFF		Long press for 3 seconds to power off	/	Power off
Audio / Video		Single tap	/	Pause/Play
		Single tap	/	Previous track
Volume ▾		Long press	/	Increase volume
Volume ▴		Single tap	/	Next track
		Long press	/	Turn down the volume
Phone call		Single tap	/	Answer the call/ End the call

Technical Specifications

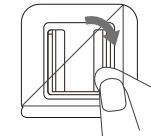
Product Name	Waterproof Mobile Phone Stand
Product Model	Z07
Dimensions (approx.)	245 × 44 × 110(mm)
Inner dimensions (approx.)	167 × 13 × 84(mm)
Weight (approx.)	255g
Main material (s)	ABS,PET, silicone, electronic components
Input Power	DC5V/1A(USB Type-C)
Battery capacity (approx.)	800mAh (Lithium - ion battery)
power	3W
Charging time (approx.)	2.5 hours
Continuous use time (approx.)	12 hours when the volume is at 50%.
Battery cycle times (approx.)	300 times
Waterproof rating	IPX5
Wireless specifications	Bluetooth: Ver.5.2
	Frequency range: 2.402GHz-2.480GHz
	Support configuration files : A2DP·AVCTS·HFP
	Send output: Class2
	Communication distance (approximate): 10m
Accessories	Charging cable (USB Type-C), Wall-mounted stickers * 3 Instruction manual
Place of origin	China

Common Bluetooth connection methods are as follows:

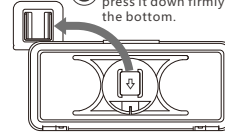
- When using it for the first time, you need to pair it via Bluetooth. After long-pressing the power button to turn it on, turn on the Bluetooth of your mobile phone and search for a device named Z07. Click on it and start the pairing process. Once you hear a sound, the pairing is completed.

installation steps;

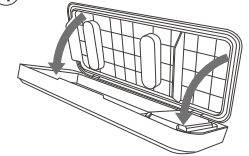
- Wipe the wall surface where the wall-mounted sticker will be pasted clean.
- Tear off the protective film and stick the wall-mounted sticker onto the wall surface.



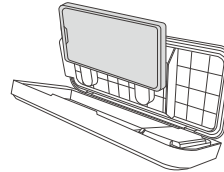
- Align the back fixing base with the wall-mounted sticker, and press it down firmly until it reaches the bottom.



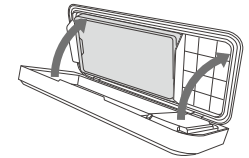
- Open the cover.



- Put the phone in.



- Close the cover, and then the installation is completed.



- The product itself cannot be immersed in water for a long time. Please do not submerge it in water.
- Before use, please check whether the water proof plug of the charging port is tightly closed.



Made in China



FCC Warning

This device complies with Part 15 of the FCC Rules. Operation is subject to the following two conditions:
 (1) This device may not cause harmful interference, and (2) this device must accept any interference received, including interference that may cause undesired operation.

NOTE 1: This equipment has been tested and found to comply with the limits for a Class B digital device, pursuant to part 15 of the FCC Rules. These limits are designed to provide reasonable protection against harmful interference in a residential installation. This equipment generates, uses and can radiate radio frequency energy and, if not installed and used in accordance with the instructions, may cause harmful interference to radio communications. However, there is no guarantee that interference will not occur in a particular installation. If this equipment does cause harmful interference to radio or television reception, which can be determined by turning the equipment off and on, the user is encouraged to try to correct the interference by one or more of the following measures:
 - Reorient or relocate the receiving antenna.
 - Increase the separation between the equipment and receiver.
 - Connect the equipment into an outlet on a circuit different from that to which the receiver is connected.
 - Consult the dealer or an experienced radio/TV technician for help.

NOTE 2: Any changes or modifications to this unit not expressly approved by the party responsible for compliance could void the user's authority to operate the equipment.

The device has been evaluated to meet general RF exposure requirement. The device can be used in portable exposure condition without restriction.