



SERVICE PARTS LIST

BULLETIN NO.
PN0011548

SPECIFY CATALOG NO. AND SERIAL NO. WHEN ORDERING PARTS		REVISED BULLETIN	DATE
BOLT™ Rechargeable Low-Profile Headlamp			Dec. 2025
CATALOG NO. 2018R	SERIAL NO. R84A	WIRING INSTRUCTION	
NAMEPLATE SPECIFICATIONS: USB INPUT: 5 V = 3 A Contains 12 Wh Li-Ion			

EXAMPLE:
Component Parts (Small #)
Are Included When Ordering
The Assembly (Large #).

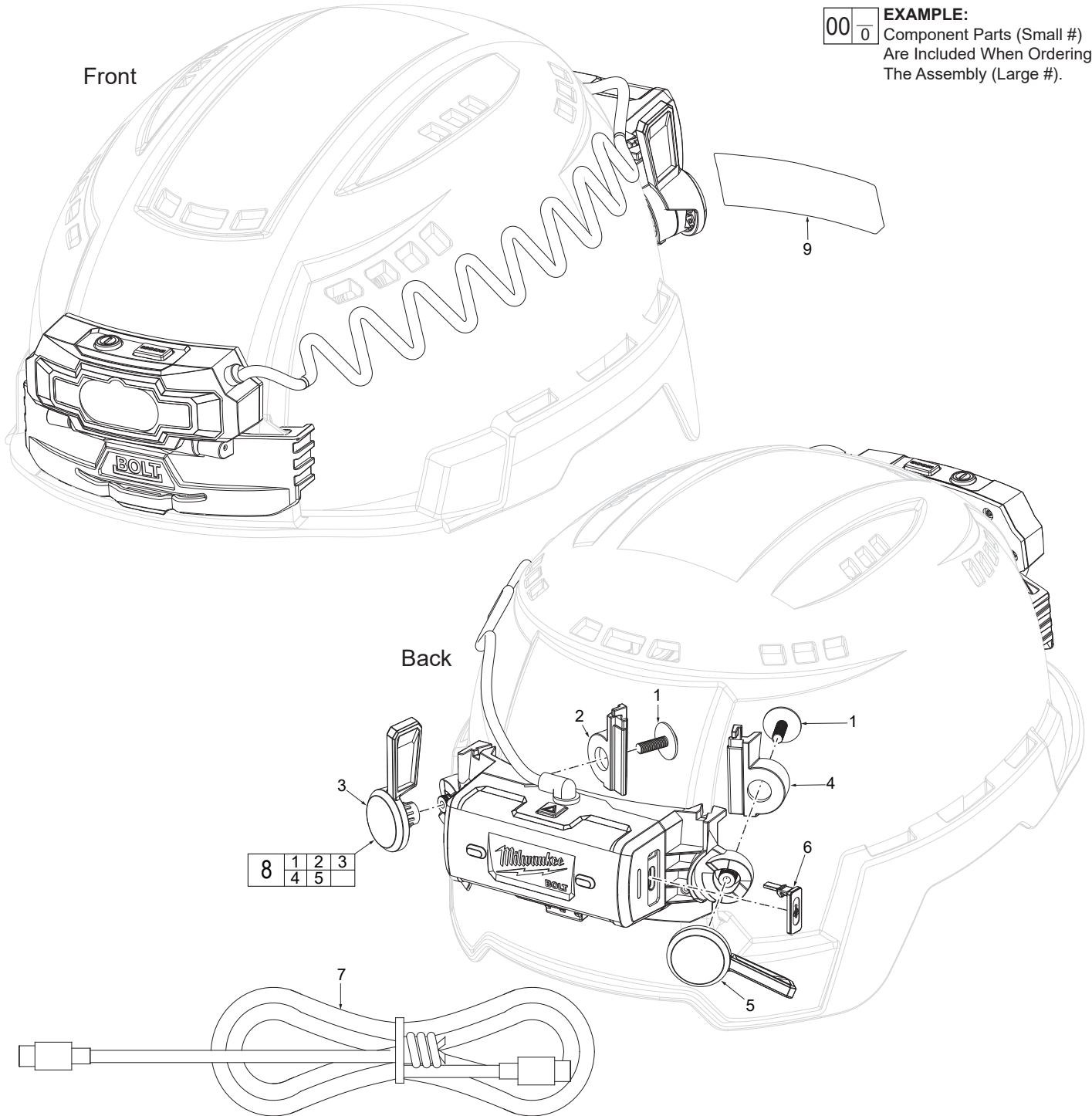


FIG.	PART NO.	DESCRIPTION OF PART	NO. REQ.
1	-----	3.5 x 10mm T-15 Pan Hd Anti-Loose Screw	(2)
2	-----	Left Clamp Holder	(1)
3	-----	Left Lever Handle	(1)
4	-----	Right Clamp Holder	(1)
5	-----	Right Lever Handle	(1)
6	22-68-2018	USB Cover	(1)
7	42-44-1211	2' USB-C to USB-C Cable (Optional)	(1)
8	44-10-2018	Clamp Lever Kit	(1)
9	12-20-0693	Service Nameplate	(1)

FIG. 9 NOTES
A clean, dry surface is essential for proper performance for any adhesive system. The area intended for application of any adhesive label or nameplate must be prepared by cleaning with isopropyl alcohol. The solvent is to be applied with a clean, lint free applicator and the surface allowed to dry before applying the label or nameplate.

MILWAUKEE TOOL • www.milwaukeetool.com
13135 W. LISBON RD., BROOKFIELD, WI 53005
Drwg. 1

