

# Sorferina Dog Bark Collar

## User Manual

Bark Collar

For any urgent matter, please contact us at [sorferina01@gmail.com](mailto:sorferina01@gmail.com)



### Welcome

We aim to help you have the best companionship and the most memorable moments with your dog together. This bark collar is designed to safely and humanely eliminate nuisance barking. Before getting started, please take a moment to read through the important safety information.

### Warnings

#### Not for use with aggressive dogs.

Do not use this product if your dog is aggressive, or if your dog is prone to aggressive behavior. Aggressive dogs can cause severe injury and even death to their owners and others. If you are unsure if this product is appropriate for your dog, please consult your veterinarian or a certified trainer.

### Cautions

#### Best fit

This product is not a toy. Keep it away from the reach of children. Use it only for its bark stopping purpose. This bark collar can be used with dogs of all sizes, but they are particularly well suited for **medium to large-sized dogs**.

### Risk of skin damage

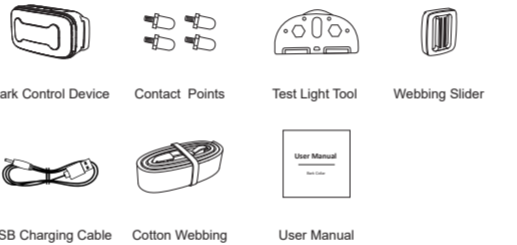
Please read and follow the instructions in this manual. The proper fit of the collar is important. A collar worn for too long or made too tight on the pet's neck may cause skin damage. Ranging from redness to pressure ulcers; this condition is commonly known as bed sores.

### Things we would recommend to do

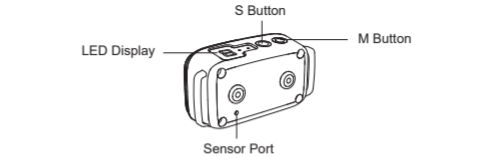
- Avoid leaving the collar on the dog for more than 10 hours per day.
- If possible, re-position the collar on the pet's neck every 1 to 2 hours.
- Check the fit to prevent excessive pressure; follow the instructions in this manual.
- Never connect a lead to the electronic collar; it will cause excessive pressure on the contact points of the bark collar.
- When using a separate collar for a leash, don't put pressure on the electronic collar.
- Wash the dog's neck area and the contacts of the collar weekly with a damp cloth.
- Examine the contact area daily for signs of a rash or a sore.
- If a rash or sore is found, discontinue the use of the collar until

the skin has healed.  
• If the condition persists beyond 48 hours, see your veterinarian.

### In the Box



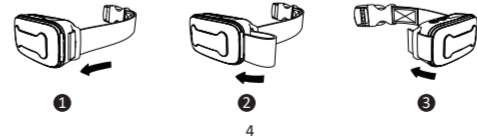
**Bark Control Device:** to release different functions to control the dog's bark  
**Test Light Tool:** to check if there is electronic shock stimulation  
**Contact Points:** to deliver the electronic shock stimulation



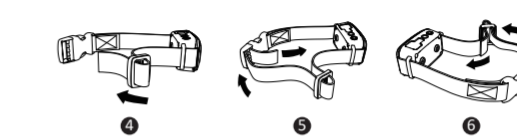
**LED Display:** to show the sensitivity level and shock stimulation level  
**M Button:** to power on or off; switch different modes  
**S Button:** to adjust different sensitivity levels or shock levels

### Prepare the Collar

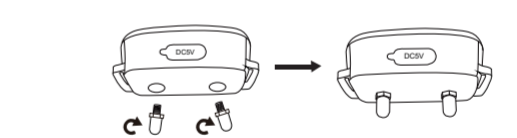
**Step 1.** Thread the Webbing through the Bark Control Device



**Step 2.** Thread the Webbing through the Webbing Slider and the Side Release Buckle



**Step 3.** Screw the Probes



**NOTE:** only do this if you are going to set the electronic shock function. If you prefer the vibration mode, **Step 3** can be ignored.

### Test the Collar

1. Press the "M" button for 2 seconds to turn the bark collar on,

you'll hear a sound and the green LED will keep on.

2. Press the "M" button again after turned on, you can choose between the electronic shock and vibration function. The green LED means the vibration mode, and the blue LED means the electronic shock mode.

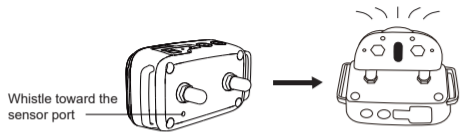
3. In the electronic shock mode, press the "S" button for 2 seconds to start setting the electronic shock level, you'll hear a rapid didi sound and the blue LED will flash.

There are 6 different levels of electronic shock stimulation offered, press the "S" button to set the suitable shock stimulation level. The bigger the number is, the stronger the shock level will be.

To quit setting the electronic shock level, press the "S" button for 2 seconds and release it till you hear the didi sound and the blue LED keeps on.

4. To check if the bark collar delivers the shock stimulation, please whistle toward the sensor port as loudly as possible and put the test light tool on the probes. It's delivering the electronic shock stimulation if the test light tool is lighted (please see the below

picture)



5.If you whistle toward the sensor port after selected the vibration mode, you'll feel the bark control device vibrates after the rapid didi sound.

6.There are 6 different sensitivity levels offered for different dog breeds, you can find a suitable level by pressing the "S" button. The bigger the number is, the more easily the bark collar will be triggered.

7.Press the "M" button for 2 seconds to turn the bark collar off.

**NOTE:**

1. You can shut off the annoying didi sound by setting in the M mode. Press the "S" button for 2 seconds in the



vibration mode and release it till you feel the vibration delivered from the bark control device. To turn on the didi sound again, please press the "S" button for 2 seconds in the vibration mode till you hear a long beep sound.

2.Make sure you have tested the bark collar before put it on your dog's neck. Also, take 1 or 2 hours for your dog to get used to wear the bark collar before turn it on and start the training.

**How it Works**

Our bark collar uses several features designed to shorten the training phase and promote good behavior. The following two charts will help you understand how our bark collar works.

**With Didi Sound**

MODE	BARKS	SOUND	FUNCTION	DURATION
Sound+ Vibration	1st-10th	6 times	Vibration	3 seconds
	11th	Sleep Mode		
Sound+ Shock	1st-10th	6 times	Shock	3 seconds
	11th	Sleep Mode		

**Without Didi Sound**

MODE	BARKS	FUNCTION	DURATION
Vibration	1st-10th	Vibration	3 seconds
	11th	Sleep Mode	
Shock	1st-10th	Shock	3 seconds
	11th	Sleep Mode	

**Charge the Collar**

1. Lift the rubber cover protecting the charging port and connect the USB charging cable.
2. Plug the charging cable into the USB end of the computer or power bank. The letter "C" on the LED screen will start flashing.
3. Recharges take no more than 2 hours. Although your bark collar should be partially charged, you'll want to fully charge it before using it for the first time. The letter "C" will keep on after charging is complete.
4. When the bark collar is charged, replace the rubber cover.

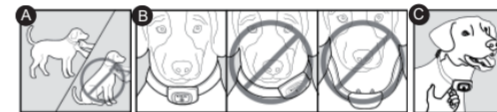
Excessive charging can shorten battery life. Only charge the bark collar when any situation in the following occurs.

- 1) Use the collar for the first time
- 2) When you see the low battery indication
- 3) Charge the collar once every 60 days when not use for a long time

**NOTE:** the letter "L" will appear on the LED screen and start flashing when the bark collar is in low battery. And the device will be turned off automatically after 3 minutes.

**Fit the Collar**

**Important: the proper fit and placement of the bark collar are important for effective operation. The contact points must have direct contact with your dog's skin on the underside of his neck (if you don't intend to set the electronic shock mode or didn't screw the probes, please make sure the backside of the bark collar has direct contact with your dog's neck).**



- 1.Make sure that the collar is turned off.
- 2.Start with your dog standing comfortably (A).
- 3.Place the collar on your pet so that the LED screen is right side up and the collar is directly under your dog's chin. Center the contact points underneath your dog's neck, touching the skin (B).

**NOTE:** it is sometimes necessary to trim the hair around the contact points to make sure that contact is consistent. However,

you should **never shave your pet's neck** as this may increase the risk of skin irritation.

- 4.Check the tightness of the collar by inserting one finger between the end of a contact point and your dog's neck (C). The fit should be snug but not constricting.
- 5.Allow your dog to wear the collar for several minutes, and then recheck the fit. Check the fit again as your dog becomes more comfortable with the collar.
- 6.For extra webbing, please cut it off and use a lighter to seal the end.

**NOTE:** do not shave the pet's neck as this may increase the risk of skin irritation. The collar should not be worn for more than 10 hours out of every 24-hour period. Leaving the collar on too long could lead to skin irritation.

**Frequently Asked Questions**

**Q: How old does a pet have to be before using the bark collar?**

A: Your pet should be at least 6 months old before using the bark collar. The collar may be too large for dogs under 8 lb to wear comfortably.

**Q: Can I attach a leash to the bark collar?**

A: No. This can result in pulling the contact points too tightly against your dog's neck. Attach a leash to a separate, non-metallic collar or a harness, making sure the extra collar does not put pressure on the contact points.

**Q: Nothing happened after I had whistled toward the sensor port, what should I do?**

A: Try to whistle as loudly as possible; if you can not trigger the bark collar by whistling, try to download some dog barking sounds from the internet to your cellphone, and feed the speaker of the cellphone toward the sensor port when test the bark collar. Make sure the barking sound downloaded is loud enough.

**Q: The bark collar didn't work after soaking in the water.**

A: Our bark collar is designed with the rainproof feature. Please make sure the charging port is sealed well by the rubber cover to avoid getting wet. We would recommend you to dry the bark collar after your dog got caught in the rain. Please do not soak the collar in the water for a long time.

