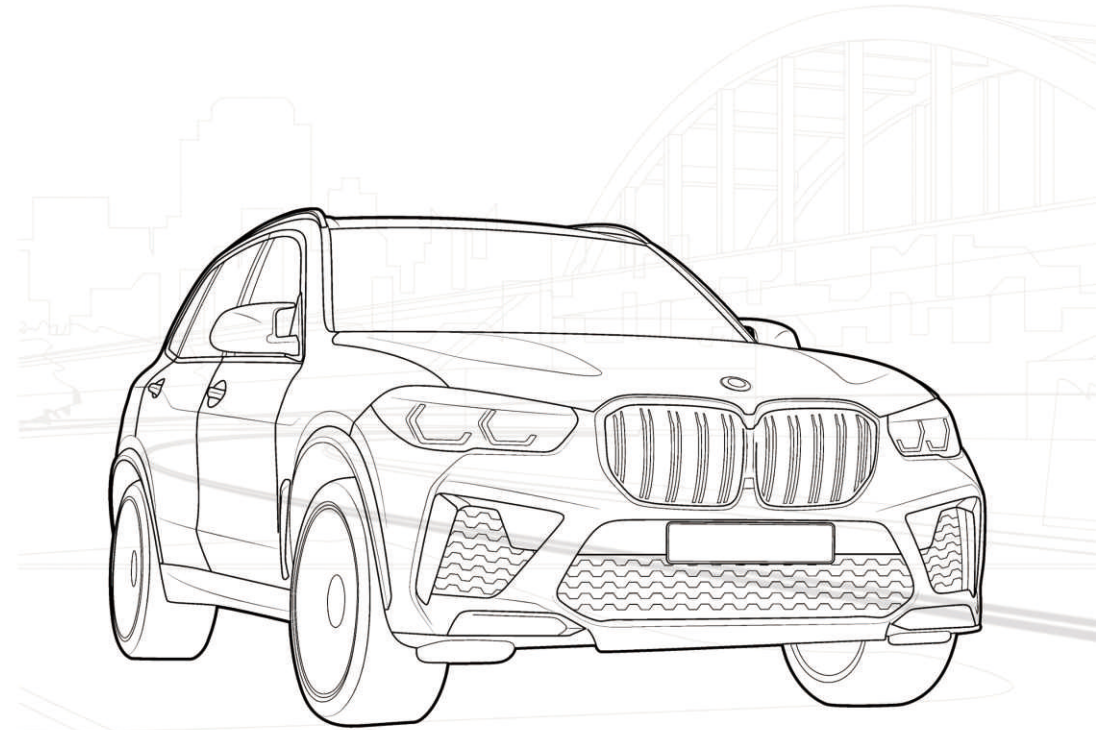


# LINUX SCREEN

## User Manual

For BMW Linux Screen



Innovation changes life

# CONTENTS

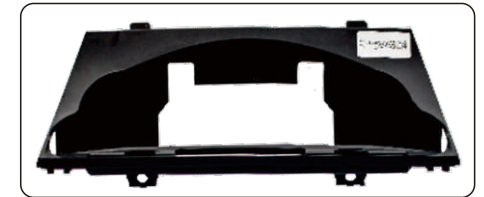
1. Cables Connection.....	3
1.1 Product List.....	3
1.2 Guidance Video.....	3
1.3 Ports Introduction.....	4
1.4 Cables Connection Chart.....	5
2. Installation Steps - Disassembly Steps.....	6
3. Installation Steps - Wiring Connection.....	9
4. Functional Testing.....	12
4.1 Wireless CarPlay / Android Auto / Hicar.....	12
4.2 Wired CarPlay / Android Auto / Hicar.....	13
4.3 Air-play.....	13
4.4 Android Mirror-link.....	13
4.5 OEM Car.....	13
4.6 Sound Setup.....	14
4.7 Camera and DVR.....	16
4.8 USB Player.....	18
5. Installation Steps - Assembly Steps.....	19
5.1 Screen Pinning.....	19
5.2 CD Host Fixed.....	19
5.3 Panel Reinstall.....	19
6. FAQ.....	20
6.1 Screen Display.....	20
6.2 Audio.....	21
7. Contact Us.....	21

## 1. Cables Connection

### 1.1 Product List



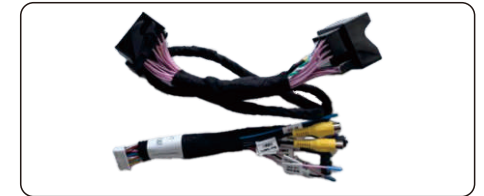
Main Screen



Bracket (Varies depending on the model)



USB Cable



Power Cable



Aux Cable



Pry Bar Set

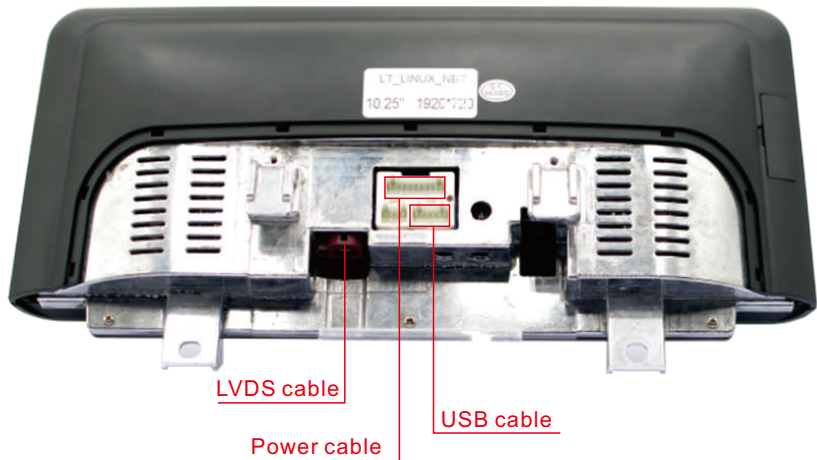
*Reminder: If your car doesn't have external Aux port, you might not need Aux cable.*

### 1.2 Guidance Video

*Reminder: It is recommended to use this user manual together with the video so that you can complete the installation smoothly.*

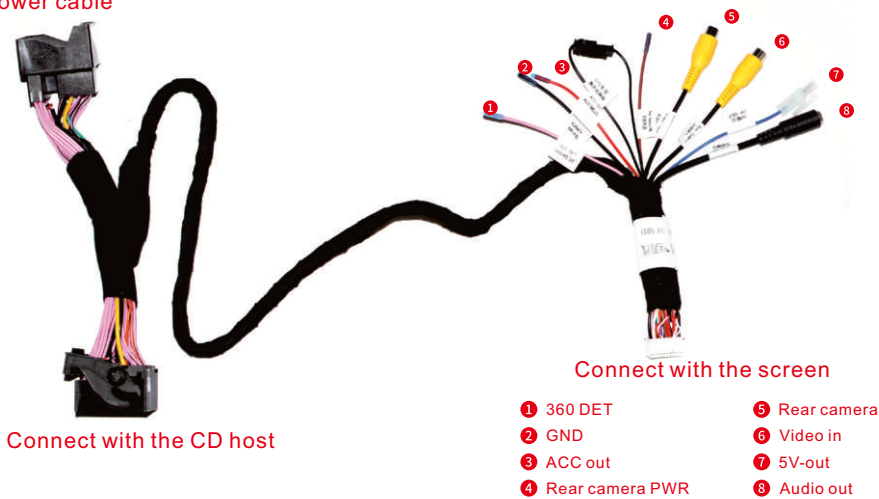
### 1.3 Ports Introduction

#### 1) Main Screen

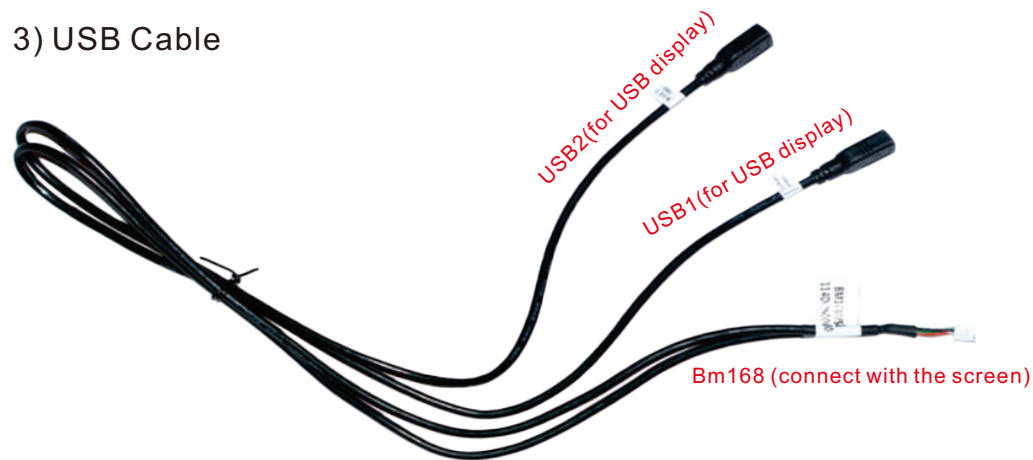


#### 2) Power Cable

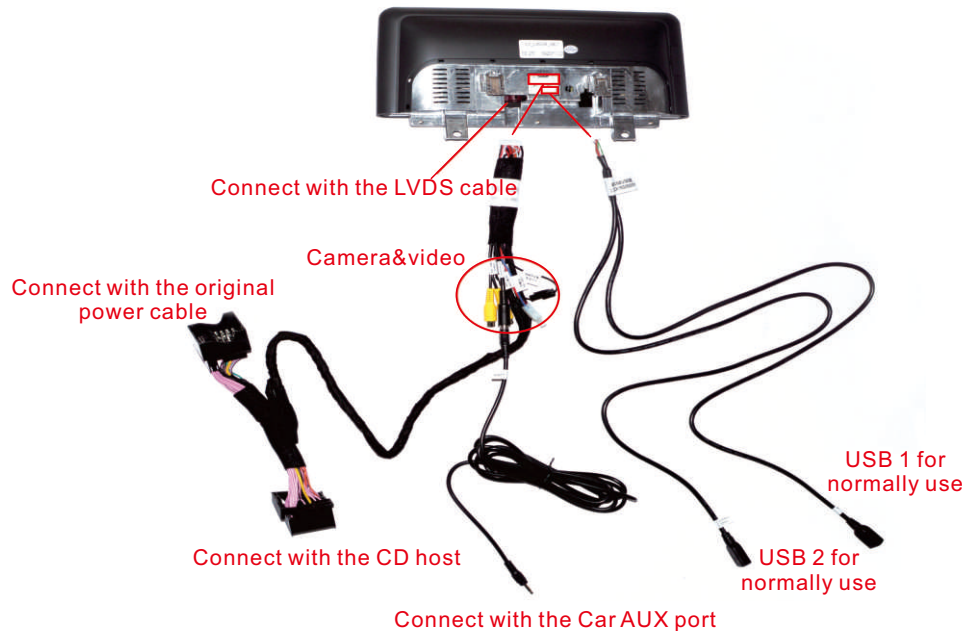
Connect with the original power cable



#### 3) USB Cable



### 1.4 Cables Connection Chart



Reminder: If your car doesn't have an original i-drive, you might need to install an external i-drive.



## 2. Installation Steps - Disassembly Steps

Reminder: Please make sure you have already switched off the engine before installing the cable.

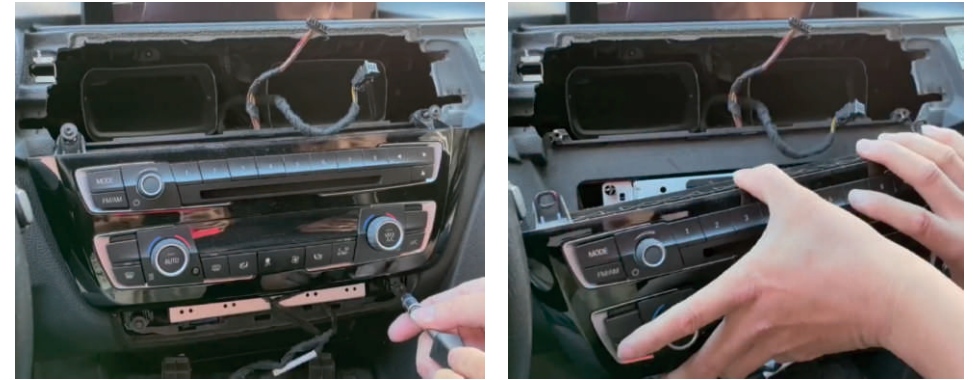
Remove the upper shell and air conditioning vents, and disconnect the wires connected to the panel.



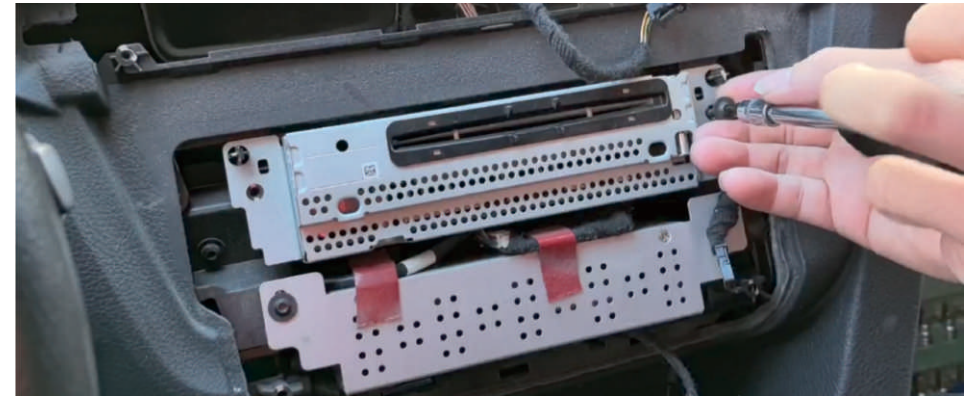
Remove the lower shell and disconnect the wires connected to the panel.



Remove the screws, disassemble the button panel, and disconnect the wires connected to the panel.



Remove the screws and take out the CD host, then unplug the original power cable from the head unit.



Reminder: There is no need to disconnect the other cables, you can decide whether to disconnect and reconnect based on the difficulty of installing the vehicle model.

Remove the screws of the OEM screen and disconnect the wires connected to the screen.

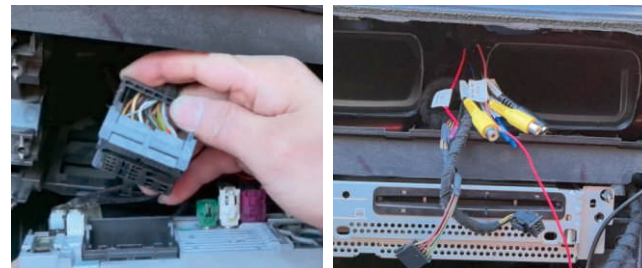


### 3. Installation Steps - Wiring Connection

#### 1) Wiring Arrangement

Take the power cable from our product and route it inside the vehicle structure shown in the image below.

*Reminder: If your car has an optical fiber cable, you have to plug it to the host and pass through the new power cable. (Detailed images and explanations: [4.6 sound setup.](#))*



Take the USB cable and connect the bm168 port to the screen, and the USB port will extend from the storage drawer through the internal vehicle structure.



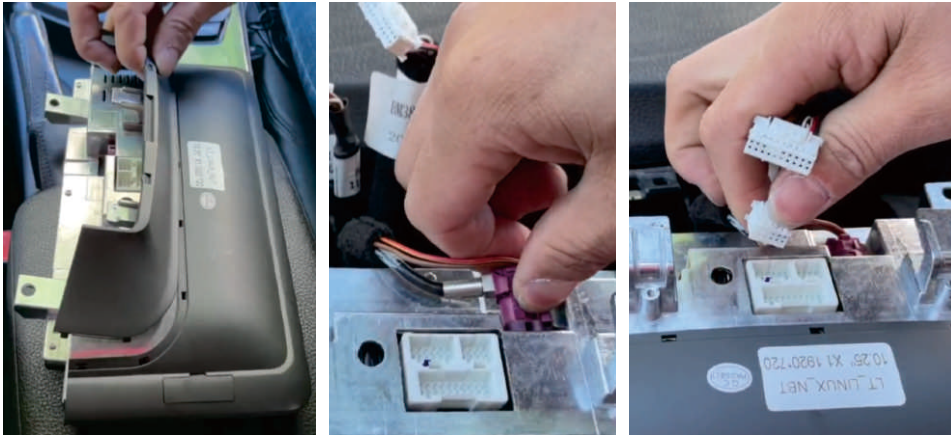
Check whether your car has an external Aux port. Usually, you may find it next to the cigarette lighter or below the central control screen. If available, connect the Aux cable and with the car Aux port and the new power cable.



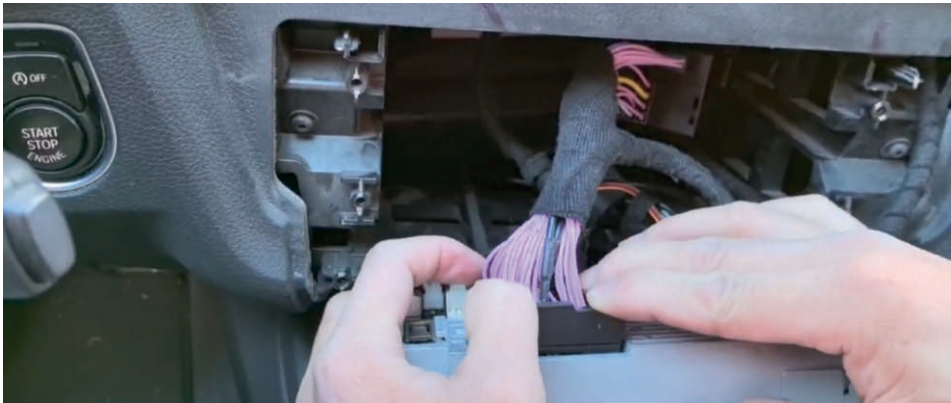
*Reminder: Aux cable can only pass from the outside of the vehicle structure and cannot be hidden inside in any form.*

## 2) Connections

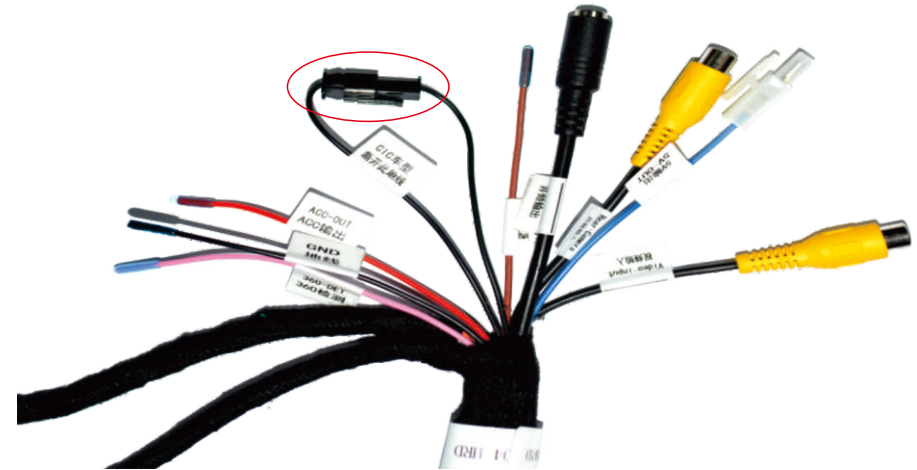
For the screen, you have to assemble the bracket and screen first and then connect the cables shown in the image below.



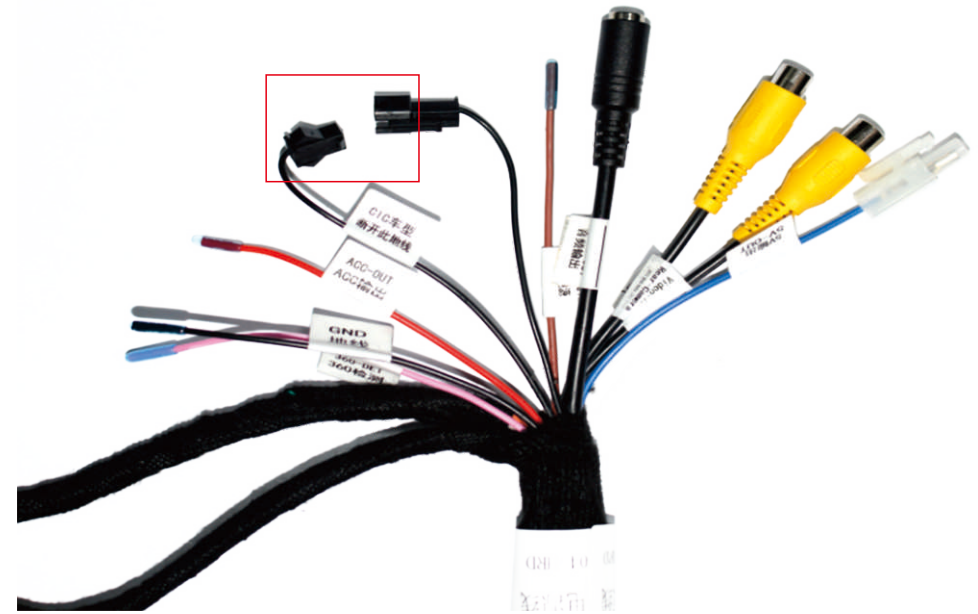
For the CD hosts, connect the new power cable with the CD host and the original power cable, as well as the fiber cable.



Reminder: For **CCC and NBT systems**, the GND cable should be connected shown as in the image below.



But for the **CIC system**, the GND cable should be disconnected to avoid sound distortion.



So please double-check your car system.

## 4. Functional Testing

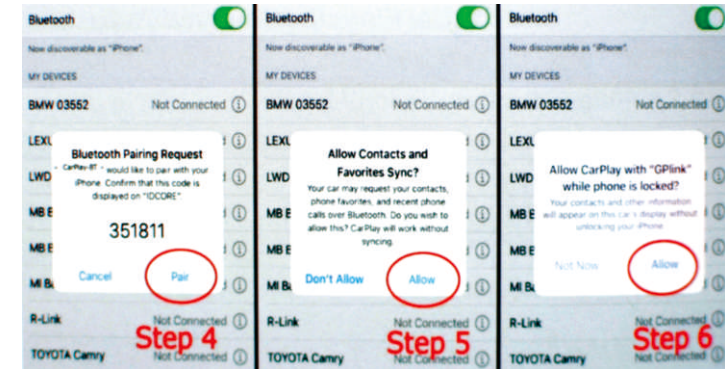
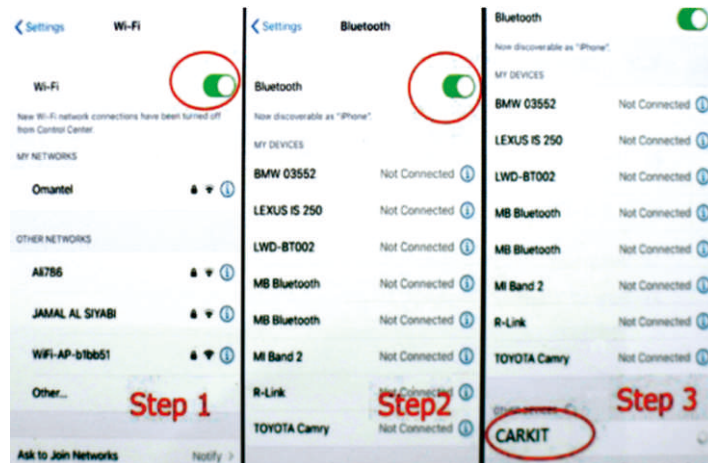
Due to the particularity of the system, it is recommended to **only open one function** at a time, otherwise it may cause the system to run slower or other problems.

Reminder: Before all the functions of the equipment have been tested successfully, please don't reinstall the shell and panel of the car. So that you can find the questions of the equipment faster and more convenient. As well as minimize possible damage and accidents during disassembly and assembly.

### 4.1 Wireless CarPlay / Android Auto / Hicar

- 1) Set up > Smart Phone, Turn on "CarPlay / Android Auto / Hicar", and turn off the others.
- 2) Before setting the CarPlay function, please disconnect the Bluetooth connection between your phone and car first.
  - Step 1: Turn on your mobile Phone "Wi-Fi" switch.
  - Step 2: Turn on "Bluetooth" as well.
  - Step 3: Search for the Bluetooth of the product, the name of the Bluetooth is "CARKIT".
  - Step 4: Pair the Bluetooth.
  - Step 5: Allow the sync.
  - Step 6: Click "Allow" to use the CarPlay function.

The connection solutions of wireless Android Auto are the same as CarPlay, so if you want to use Android Auto, follow the connection method and steps of CarPlay.



### 4.2 Wired CarPlay / Android Auto / Hicar

- 1) Connect the product to your phone by USB cable.
- 2) Use wired CarPlay / Android Auto / Hicar.

### 4.3 Air-play

- 1) Set up > Smart Phone, Turn on "Air-play", and turn off the others.
- 2) Turn on the WiFi switch of the screen and connect to your iPhone personal hotspot. Open the shortcut menu bar of your iPhone, select "screen mirroring" and turn it on, and then you can use the Airplay function.

### 4.4 Android Mirror-link

- 1) Download and install the "Auto-link Pro" App on your Android phone.
- 2) Set up-Smart Phone, Turn on "Autolink", and turn off the others.
- 3) Open the "Auto-link Pro" App on your phone.
- 4) Connect "CAR-XXXXX". Allow "Auto-link Pro" to use the mirror link function.

### 4.5 OEM Car

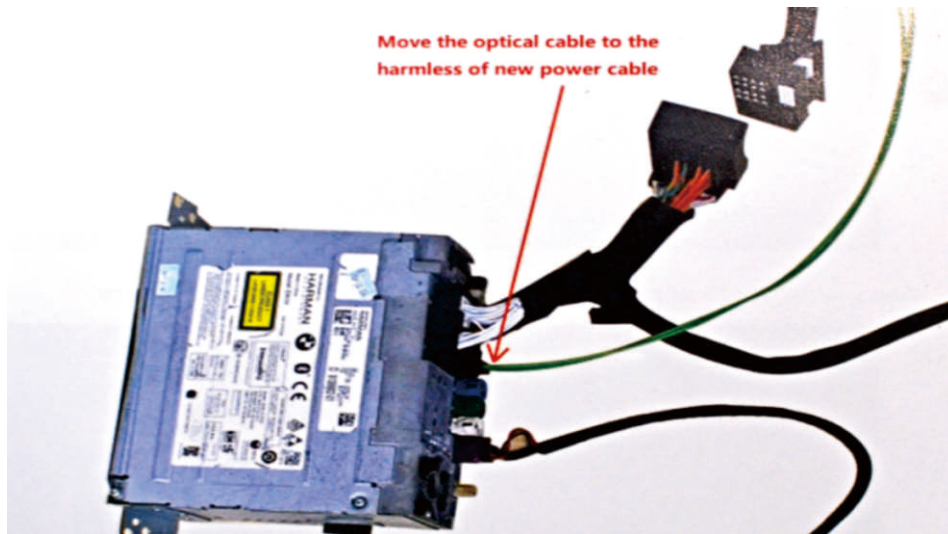
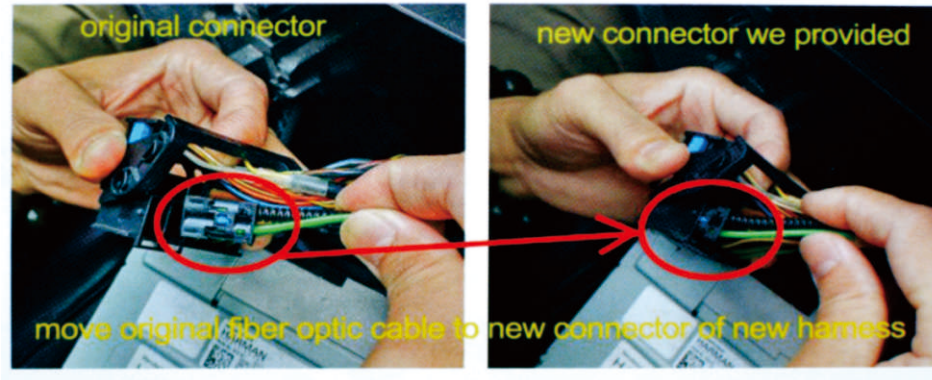
- 1) Home > OEM Car
- 2) Now you can use i-drive to use your OEM car system.

Reminder: The OEM screen doesn't have a touch screen function, so after entering the OEM car system, clicking anywhere on the screen will exit OEM mode. You can only use i-drive to control the OEM screen.

## 4.6 Sound Setup

### 1) Optical Fiber Cable Installation

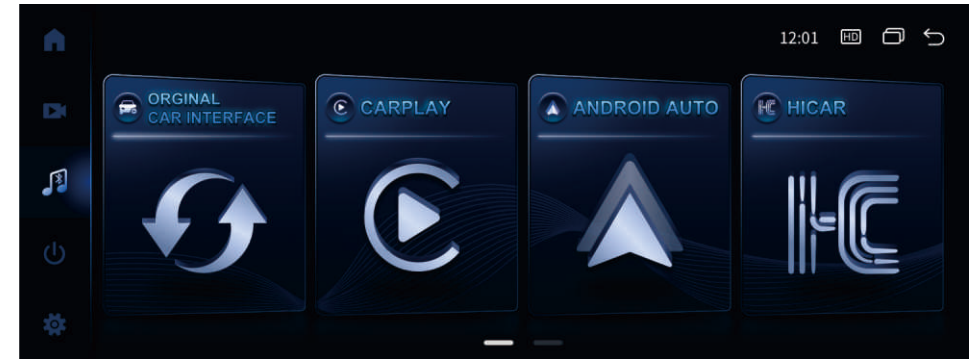
When you connect the new power cable to the head unit, you have to take the optical fiber cable from the original power cable and plug it into the host pass through the new power cable.



### 2) Sound Transmission Methods

#### AUX setup steps

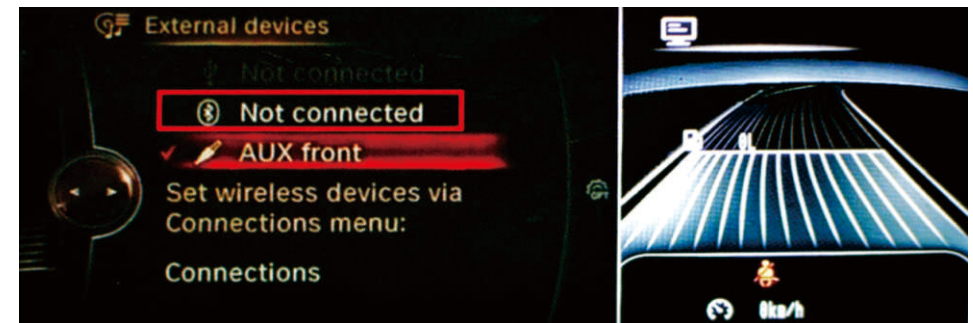
Click the "Original Car" logo in the main menu to enter the original system.



Enter into the "CD/Multimedia" or "Multimedia", and click "External devices".



Select the "AUX front" as the sound transmission method.



Keep the original system in "AUX front" status, touch the screen back to the Linux interface, and the AUX setting is done.

*Reminder: If "AUX Front" is not set, this may result in only FM and USB from the OEM screen being able to play. CarPlay/Android Auto and Bluetooth may not be able to play audio.*

## 4.7 Camera and DVR

### 1) Camera Setup

OEM camera: Setup > Car Settings > Reversing Settings > Camera Type > Original camera

Aftermarket Camera: Setup > Car Settings > Reversing Settings > Camera Type > Aftermarket camera

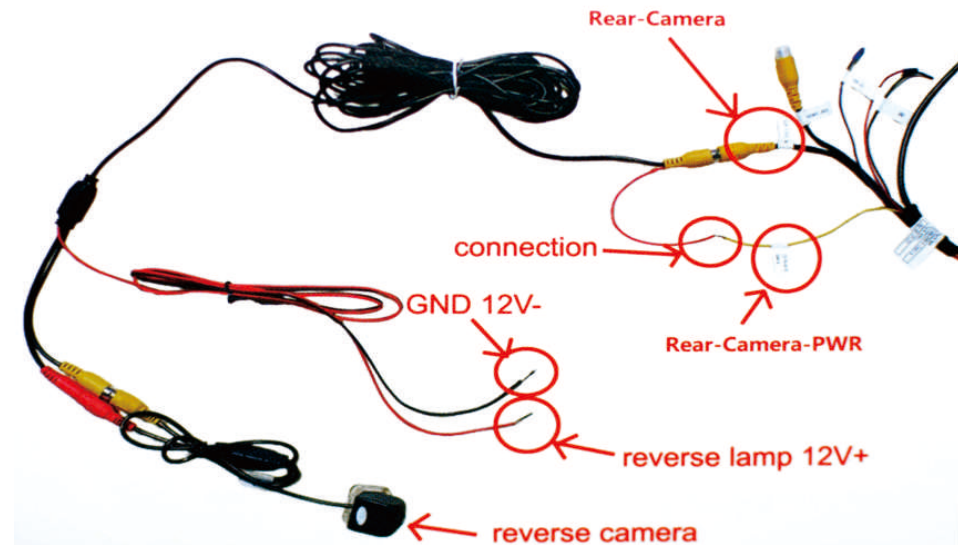
### 2) Camera Cables Connection

Reminder: For the original camera, there is no need to connect any cable for the camera, but for the aftermarket camera, you have to follow the below samples to connect the cable.

#### Rear camera cables connection

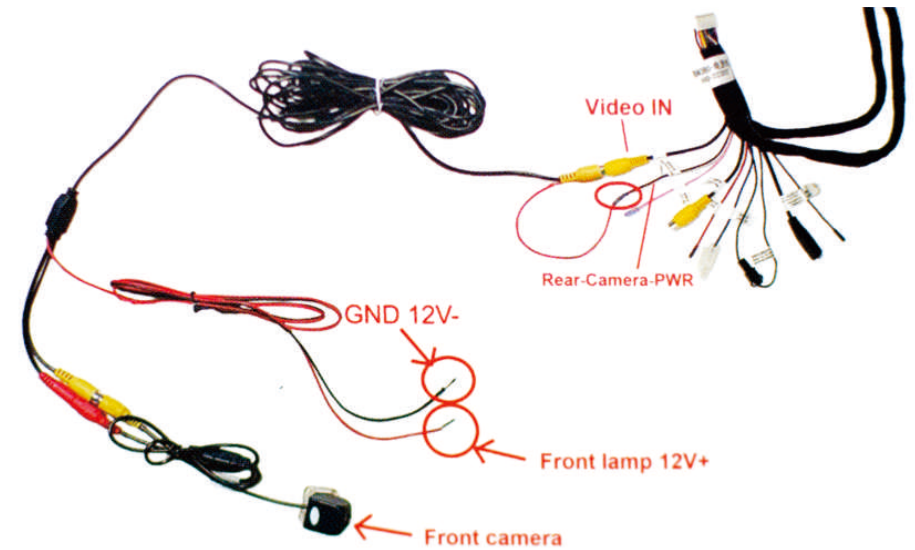
Rear-Camera Cable connection for AT: "Rear - Camera" + "Rear - Camera - PWR"

Rear-Camera Cable connection for MT: "Rear - Camera" + "Back DEL"



#### Front Camera/DVR Cables Connection

The cable connection method for both the front camera and DVR are the same, and now the product only supports the DVR of the RCA port. Cable connection ports: "Video - input" + "Rear - Camera - PWR"

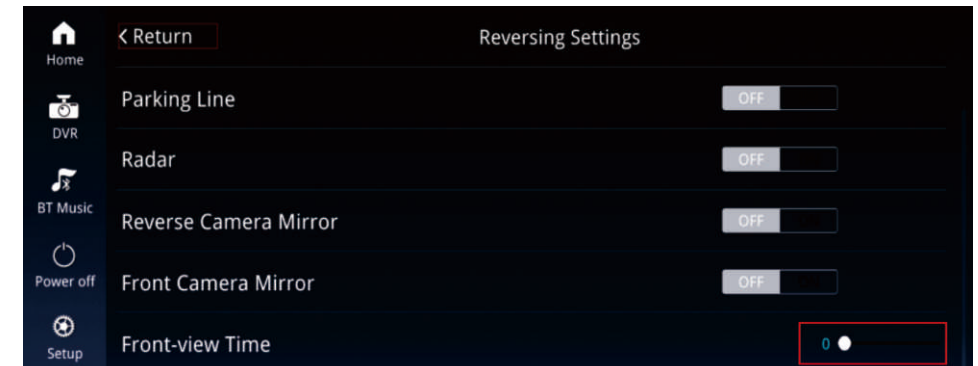


#### 360 Camera Cables Connection

The power cable doesn't have enough video in the port for the 360 cameras, so you have to add one more decoder to integrate all the cameras' video first, and then connect the decoder with the video in the port of the power cable.

### 3) Front-view Time Setup

To activate the front camera, you have to set the "Front-view Time" first. First shift to the reverse gear, then change to the driving gear. And the screen will enter the "Reversing Setting" interface, so you can set the "Front-view Time" here. Normally you shall set the "Front-view Time" as "0-20" seconds.



## 4.8 USB Player

Download videos and music to USB and connect to the screen via USB cable.

You can play music and videos in the car through the screen.

*Reminder: It is recommended to unplug the USB when not using it to play music or video, as this may cause audio playback confusion.*

## 5. Installation Steps - Assembly Steps

### 5.1 Screen Pinning

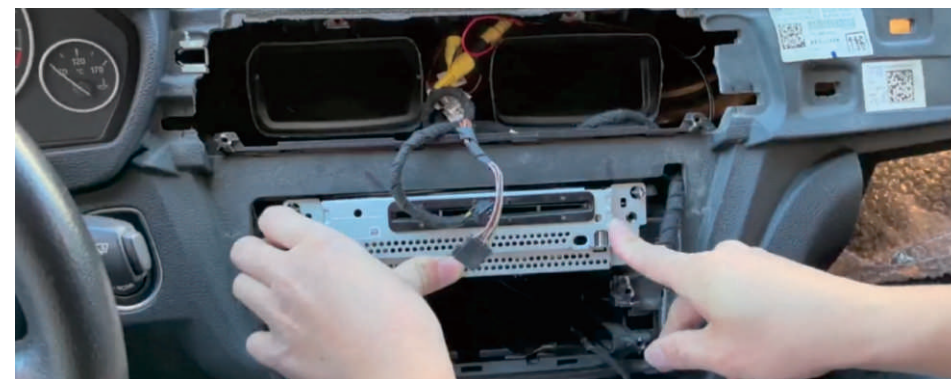
Insert the screws through the fixing holes at the bottom of the screen tightly to ensure that the screen is firmly fixed.



### 5.2 CD Host Fixed

You can place the wiring harness anywhere in the hollow space inside the car, and using tape/zip ties may make it easier to store the wires.

*Reminder: Please ensure that no wires will be stuck/crushed when reinstalling the housing, which may significantly shorten the product life or cause certain functions to be disconnected.*



### 5.3 Panel Reinstall

Connect the wires of the key panel and reinstall, then fix four screws at the corners.

Connect the wires of the lower shell and reinstall.

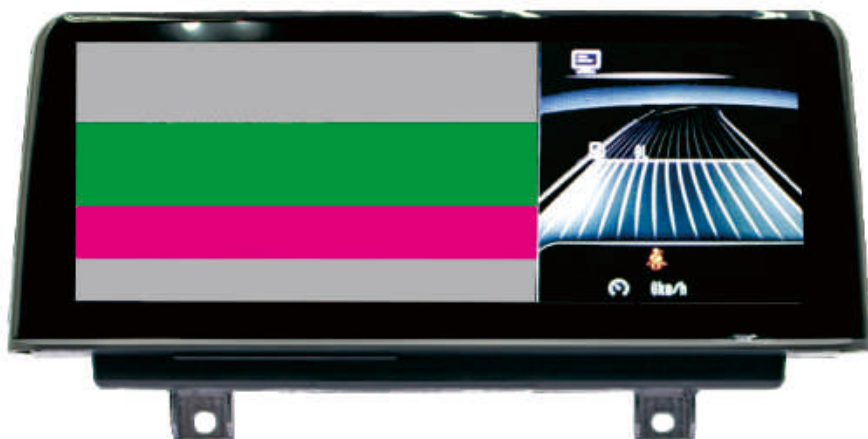
Connect the wires of the upper shell and the air-conditioning outlet and reinstall.

## 6. FAQ

### 6.1 Screen Display



When your OEM screen shows like the image above, it may be because the screen resolution is too large.

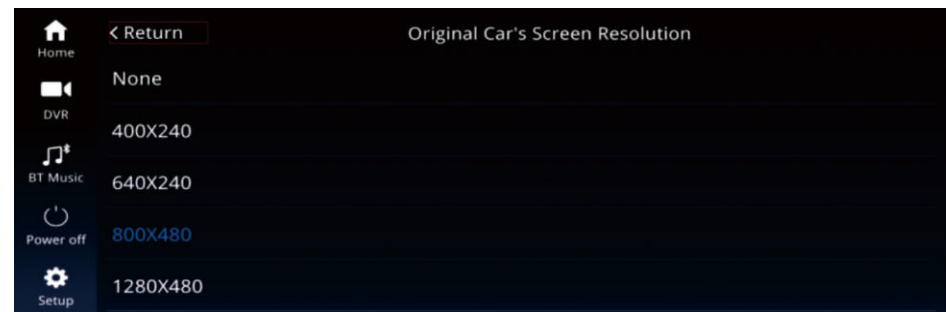


When your OEM screen shows like the image above, it may be because the screen resolution is too large.

In the above two cases, you need to change the original car resolution to the correct resolution and then restart the car.

Setup > Car settings > Original Car's Screen Resolution

Select the correct resolution as per your original car screen resolution.



*Reminder: Please make sure to restart the car after changing the resolution.*

### 6.2 Audio

Common audio problems that may occur include the following:

- Wiring error
- AUX front is not set
- AUX wiring is not plugged in all the way
- External AUX interface of some models is oxidized or aged

If you have any further questions or need more help, please:

## 7. Contact Us

When you contact us, please send us the following information:

1. Order number
2. Car model and year
3. Tell us the detailed problem you encountered. Video or pictures of the problem will be greatly appreciated. This will go a long way in helping us find a solution.

**FCC Warning Statement: Changes or modifications to this unit not expressly approved by the party responsible for compliance could void the user's authority to operate the equipment. This equipment has been tested and found to comply with the limits for a Class B digital device, pursuant to Part 15 of the FCC Rules. These limits are designed to provide reasonable protection against harmful interference in a residential installation. This equipment generates, uses and can radiate radio frequency energy and, if not installed and used in accordance with the instructions, may cause harmful interference to radio communications. However, there is no guarantee that interference will not occur in a particular installation. If this equipment does cause harmful interference to radio or television reception, which can be determined by turning the equipment off and on, the user is encouraged to try to correct the interference by one or more of the following measures:**

- **Reorient or relocate the receiving antenna.**
- **Increase the separation between the equipment and receiver.**
- **Connect the equipment into an outlet on a circuit different from that to which the receiver is connected.**
- **Consult the dealer or an experienced radio/TV technician for help.**

**This device complies with Part 15 of the FCC Rules. Operation is subject to the following two conditions: (1) this device may not cause harmful interference, and (2) this device must accept any interference received, including interference that may cause undesired operation.**

#### **FCC Radiation Exposure Statement**

**The antennas used for this transmitter must be installed to provide a separation distance of at least 20 cm from all persons and must not be co - located for operating in conjunction with any other antenna or transmitter.**