



FR07

7" Slim Face Recognition Terminal



Face | Fingerprint | Card



FR07 Face recognition terminal

FR07 is a seven-inch slim face recognition terminal with wide dynamic dual camera anti-counterfeiting, supporting stranger detection, mask recognition and live body detection, it's also support fingerprint recognition and M1 card recognition. FR07 is suitable for office areas, hotels, channel gates, office buildings, schools, shopping malls, stores, communities and other places that need to use face department access control systems.

FUNCTION

Recognition distance	0.5m-3m
Recognition time	<0.2s
Local off-line Use	Local 5W face database
1:N Face Recognition	Support one in 10,000 false, Recognition rate, 99% pass rate
1:1	Support optional card swipe module, ID card module can realize 1:1 face comparison
Stranger Detection	Support
Recognition Distance Setting	Setting adjustable
Device Remote Upgrade	Support
Device Interface	Device management, authority management, Personnel/photo management, record query, etc.

CAMERA

Resolution	200W
Type	RGB+IR
Aperture	2.0mm
Focal Length	50-150CM
White Balance	Automatic

INTERFACE

Audio	1*Audio Output
USB Interface	USB 2.0 micro*2
Serial 232	2*RS232 interface
Wiegand Interface	1*Wiegand input, 1*Wiegand output, 2.5mm*2PIN
OTG Interface	1*OTG interface

SPECIFICATION

Screen Size	7-inch, wide viewing angle IPS screen
Resolution	1024*600,brightness 350cd/ m ²
Dimension	261*124*20mm
Weight	1.9KG
Protection Level	IP55 supports semi-outdoor use (no rain)
Power Consumption	DC12V
Electromagnetic Radiation	No frequency point exceeds the standard
Static Electricity	4K/8K
Working Humidity	10%-90%
Working Temperature	15-30°C
Power Supply	5W MAX
Installation Method	Wall mounting, Counter-top bracket, Gate mounting, Floor standing bracket
OS	Android 11

HARDWARE

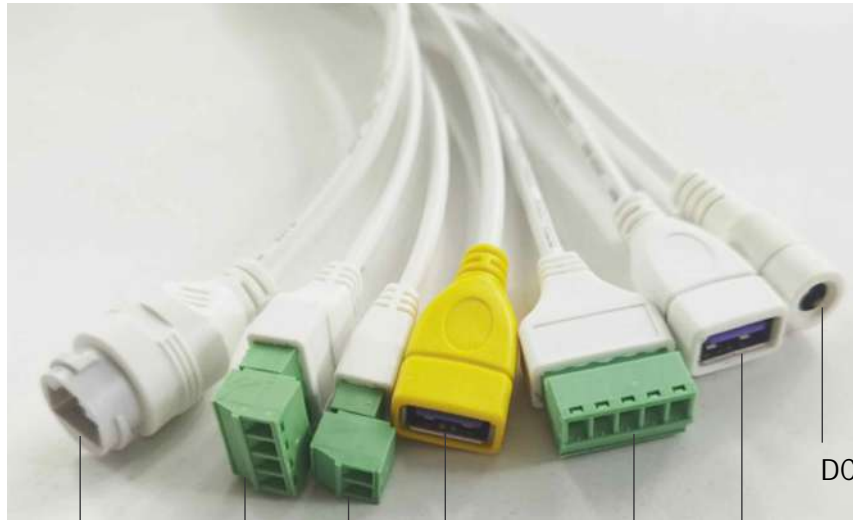
CPU	Quad-core 2.0GHz
RAM	2GB
ROM	16GB
ISP	Built-in dual-way ISP
Patch Light	Infrared, LED fill light
Network Module	Support wired, 2.4G/5Gwifi (optional)



- 1 Indicator light
- 2 IR+RGB face recognition camera
- 3 7" touch screen
- 4 RFID card reader
- 5 Fingerprint sensor
- 6 Heat sink fins
- 7 Speaker
- 8 Metal pillars



HF



RJ45

WGIN

Relay

USB-OTG

WGOUT

USB

DC



Smoke Detector

Alarm

Exit Button

Back Office Management Software

FR07

Door Access



Turnstile type



Floor stand



Adjustable stand



Desktop type



Wall mounted



Head-quarter: Chongqing Huifan Technology Co., Ltd.

◆ D-13, Dongli International Building Longtousi, Yubei District, Chongqing, China.

Branch: Shenzhen BIO Technology Co., Ltd.


◆ Room 301-305, No.32, Jianlong Industrial Zone, Yuanshan, Longgang District, Shenzhen, China.

 info@hfctv.com

 Huifan Technology Co.,Ltd

 Huifan Technology

 HF_Security

 Chongqing-huifan-technology



YouTube



This device complies with part 15 of the FCC Rules. Operation is subject to the following two conditions:

(1) This device may not cause harmful interference

(2) this device must accept any interference received, including interference that may cause unde operation.

Any Changes or modifications not expressly approved by the party responsible for compliance could void the user's authority to operate the equipment.

Note: This equipment has been tested and found to comply with the limits for a Class B digital device, pursuant to part 15 of the FCC Rules. These limits are designed to provide reasonable protection against harmful interference in a residential installation. This equipment generates uses and can radiate radio frequency energy and, if not installed and used in accordance with the instructions, may cause harmful interference to radio communications. However, there is no guarantee that interference will not occur in a particular installation. If this equipment does cause harmful interference to radio or television reception, which can be determined by turning the equipment off and on, the user is encouraged to try to correct the interference by one or more of the following measures:

-Reorient or relocate the receiving antenna.

-Increase the separation between the equipment and receiver.

-Connect the equipment into an outlet on a circuit different from that to which the receiver is connected.

-Consult the dealer or an experienced radio/TV technician for help.

FCC Radiation Exposure Statement

This device meets the FCC requirements for RF exposure. The device is designed for normal indoor use and complies with applicable FCC exposure limits.

This equipment should be installed and operated with minimum distance 20cm between the radiator & your body.