

PHILIPS

Fidelio

Wireless Subwoofer FW1



User manual

Register your product and get support at
www.philips.com/support

Contents

1	Important safety instructions	3
	Safety	3
	Care for your product	4
	Care of the environment	4
	Declaration of conformity	4
	Help and support	5
	FCC information	6

2	Your Subwoofer	7
	What's in the box	7
	Subwoofer	8

3	Connect	9
	Connect to power	9
	Pairing with FB1 soundbar (Initial set up to RF-link)	10
	Wi-Fi Set up	11
	Connect the subwoofer to Philips Play-fi enabled TV	13
	Wired connection (Sub-in)	14
	Wireless connection	15
	Upgrade firmware	15
	Factory reset	15

4	Product specifications	16
----------	-------------------------------	-----------

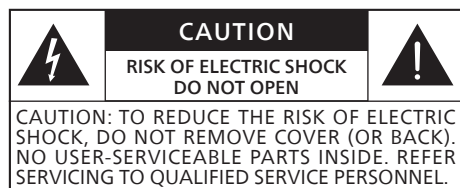
5	Troubleshooting	17
----------	------------------------	-----------

1 Important safety instructions

Read and understand all instructions before you use your product. If damage is caused by failure to follow instructions, the warranty does not apply.

Safety

Know these safety symbols



This is CLASS II apparatus with double insulation, and no protective earth provided.



AC voltage



Follow the instructions in the user manual!



WARNING!
Warning: Risk of electric shock!



The exclamation mark is intended to alert the user to the presence of important operating instructions.

Risk of electric shock or fire!

- Before you make or change any connections, make sure that all devices are disconnected from the power outlet.
- Never expose the product and accessories to rain or water. Never place liquid containers, such as vases, near the product. If liquids are spilt on or into the product, disconnect it

from the power outlet immediately. Contact Consumer Care to have the product checked before use.

- Never place the product and accessories near naked flames or other heat sources, including direct sunlight.
- Never insert objects into the ventilation slots or other openings on the product.
- Where the mains plug or an appliance coupler is used as the disconnect device, the disconnect device shall remain readily operable.
- Disconnect the product from the power outlet before lightning storms.
- When you disconnect the power cord, always pull the plug, never the cable.
- Use the product in tropical and/or moderate climates.

Risk of short circuit or fire!

- For identification and supply ratings, see the type plate at the back or bottom of the product.
- Before you connect the product to the power outlet, ensure that the power voltage matches the value printed on the back or bottom of the product. Never connect the product to the power outlet if the voltage is different.

Risk of injury or damage to this product!

- For wall mounting, this product must be securely attached to the wall in accordance with the installation instructions. Use only the supplied wall mount bracket (if available). Improper wall mounting may result in accident, injury or damage. If you have any query, contact Consumer Care in your country.
- Never place the product or any objects on power cords or on other electrical equipment.

- If the product is transported in temperatures below 5°C, unpack the product and wait until its temperature matches room temperature before connecting it to the power outlet.
- Parts of this product can be made of glass. Handle with care to avoid injury and damage.

Risk of overheating!

- Never install this product in a confined space. Always leave a space of at least four inches around the product for ventilation. Ensure curtains or other objects never cover the ventilation slots on the product.

Note

- The rating label is pasted on the bottom or back of the equipment.

Care for your product

Use only microfiber cloth to clean the product.

Care of the environment

Disposal of your old product and battery



Your product is designed and manufactured with high quality materials and components, which can be recycled and reused.



This symbol on a product means that the product is covered by European Directive 2012/19/EU.



This symbol means that the product contains batteries covered by European Directive 2013/56/EU which cannot be disposed of with normal household waste.

Inform yourself about the local separate collection system for electrical and electronic products and batteries. Follow local rules and never dispose of the product and batteries with normal household waste. Correct disposal of old products and batteries helps prevent negative consequences for the environment and human health.

	AT	BE	BG	HR	CY	CZ	DK
	EE	FI	FR	DE	EL	HU	IE
	IT	LV	LT	LU	MT	NL	PL
	PT	RO	SK	SI	ES	SE	UK(NI)
UK							

EN For 5G Wi-Fi Device

The device for operation in the band 5150–5350 MHz is only for indoor use to reduce the potential for harmful interference to co-channel mobile satellite systems.

FR Pour un appareil Wi-Fi 5G

les dispositifs fonctionnant dans la bande 5150-5250 MHz sont réservés uniquement pour une utilisation à l'intérieur afin de réduire les risques de brouillage préjudiciable aux systèmes de satellites mobiles utilisant les mêmes canaux.

Declaration of conformity

This product complies with the radio interference requirements of the European community.

Hereby, MMD Hong Kong Holding Limited declares that the product is in compliance with the essential requirements and other relevant provisions of RED Directive 2014/53/EU and UK Radio Equipment Regulations SI 2017 No 1206. You can find the Declaration of Conformity on www.philips.com/support.

Help and support

For extensive online support, visit www.philips.com/support to:

- download the user manual and the quick start guide
- watch video tutorials (available only for selected models)
- find answers to frequently answered questions (FAQs)
- email us a question
- chat with our support representative.

Follow the instructions on the website to select your language, and then enter your product model number.

Alternatively, you can contact Consumer Care in your country. Before you contact, note down the model number and serial number of your product. You can find this information on the back or bottom of your product.

Trademarks:



For DTS patents, see <http://patents.dts.com>. Manufactured under license from DTS, Inc. (for companies headquartered in the U.S./Japan/Taiwan) or under license from DTS Licensing Limited (for all other companies). DTS, DTS Play-Fi, Play-Fi and the DTS Play-Fi and Play-Fi logos are registered trademarks or trademarks of DTS, Inc. in the United States and other countries. © 2021 DTS, Inc. ALL RIGHTS RESERVED.



The Wi-Fi CERTIFIED™ Logo is a registered trademark of Wi-Fi Alliance®.

FCC information

NOTE: This equipment has been tested and found to comply with the limits for a Class B digital device, pursuant to Part 15 of the FCC Rules. These limits are designed to provide reasonable protection against harmful interference in a residential installation. This equipment generates, uses and can radiate radio frequency energy and, if not installed and used in accordance with the instructions, may cause harmful interference to radio communications. However, there is no guarantee that interference will not occur in a particular installation. If this equipment does cause harmful interference to radio or television reception, which can be determined by turning the equipment off and on, the user is encouraged to try to correct the interference by one or more of the following measures:

- Reorient or relocate the receiving antenna.
- Increase the separation between the equipment and receiver.
- Connect the equipment into an outlet on a circuit different from that to which the receiver is connected.
- Consult the dealer or an experienced radio / TV technician for help.

FCC&IC Warning:

- This equipment should be installed and operated with minimum distance 20cm between the radiator & your body.
- Changes or modifications to this unit not expressly approved by the party responsible for compliance could void the user's authority to operate the equipment.

FCC & IC Attention

- Cet appareil est conforme à FCC et IC l'exposition aux rayonnements limites fixées pour un environnement non contrôlé. Cet appareil doit être installé et utilisé avec une distance minimale de 20 cm entre le radiateur

et votre corps. Cet transmetteur ne doit pas être co-situé ou opérant en liaison avec toute autre antenne ou transmetteur.

- Des câbles blindés doivent être utilisés avec cet appareil pour assurer la conformité avec les limites de la classe B de la FCC. fonctionnement de l'appareil.

IC-Canada: CAN ICES-003(B)/NMB-003(B)

This device contains licence-exempt transmitter(s) / receiver(s) that comply with Innovation, Science and Economic Development Canada's licence-exempt RSS(s). Operation is subject to the following two conditions:

- 1 This device may not cause interference.
- 2 This device must accept any interference, including interference that may cause undesired operation of the device.

Avis d'Industrie Canada: CAN ICES-003(B)/NMB-003(B)

L'émetteur/récepteur exempt de licence contenu dans le présent appareil est conforme aux CNR d'Innovation, Sciences et Développement économique Canada applicables aux appareils radio exempts de licence. L'exploitation est autorisée aux deux conditions suivantes :

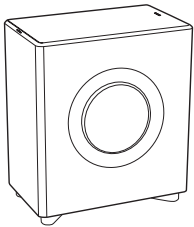
- 1 L'appareil ne doit pas produire de brouillage;
- 2 L'appareil doit accepter tout brouillage radioélectrique subi, même si le brouillage est susceptible d'en compromettre le fonctionnement.

2 Your Subwoofer

Congratulations on your purchase, and welcome to Philips! To fully benefit from the support that Philips offers, register your subwoofer at www.philips.com/support.

What's in the box

Check and identify the items in the package:



Subwoofer x1



Power Cord * x1

- Power cord quantity and plug type vary by regions.



Quick Start Guide x1

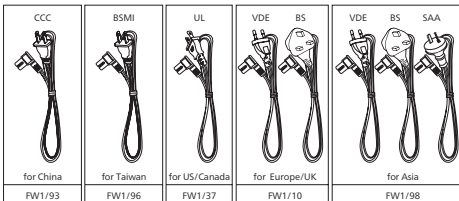


Warranty Card x1



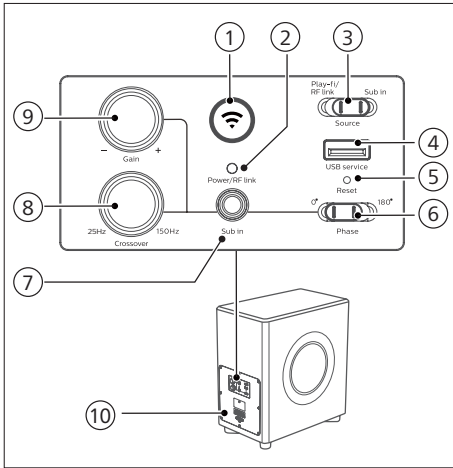
Safety Sheet x1

- Images, illustrations and drawings shown on this User Manual are for reference only, actual product may vary in appearance.



Subwoofer

This section includes an overview of the wireless subwoofer.



- ① **Wi-Fi Setup button / indicator**
 - Trigger Wi-Fi setup for Play-fi.
 - Press and hold the button for 8 seconds to active the AP mode.
 - Press and hold the button for 4 seconds to active the WPS mode.

Action	LED State	Status
	Constant on	Connected / Paired successful
Press and hold ① 8 seconds	Blink	Wi-Fi Access Point (AP) mode
Press and hold ① 4 seconds	Double blink	Wi-Fi Protected Setup (WPS) mode

- ② **Power/RF link indicator**
- ③ **Source (switch Play-fi/FR link/Sub in mode)**

- When FW1 is used as a wired subwoofer, source switch must be at Sub in position.
- ↳ All network audio functionality will stop working.
- ↳ Wi-Fi is disconnected but Wi-Fi credentials shall be retained if it is setup previously.
- ↳ Play-fi module can be turned off.

- To upgrade firmware for Play-fi module and MCU via USB service port, source switch must be at Sub in position.

- ④ **USB service socket**
The USB socket is for service only.
- ⑤ **Reset button (Pin hole)**
Reset device to default setting.
- ⑥ **Phase 0° - 180° (switch)**
- ⑦ **Sub in (socket)**
Use the subwoofer cable to connect the subwoofer to other equipments (not supplied).
- ⑧ **Crossover 25Hz-150Hz (knob)**
- ⑨ **Gain +/- (knob)**

Functional Settings	Default	
Gain	-6 dB to +6 dB	0 dB
Crossover	25 to 150 Hz	-
Phase	0 or 180 degree	0 degree

When FW1 as Play-fi subwoofer, above controls and functions are not applicable.

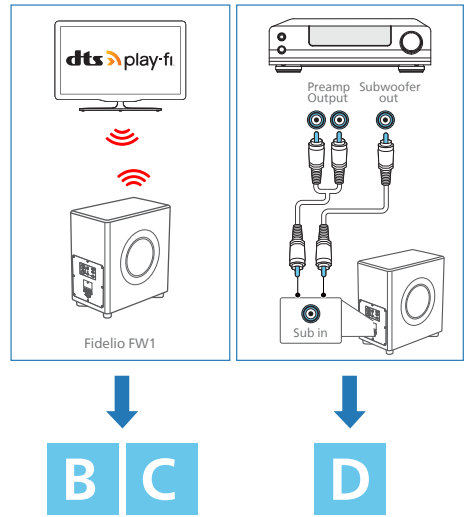
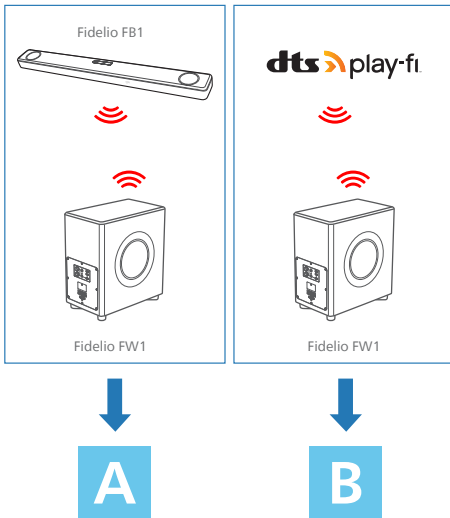
- ⑩ **AC in ~ socket**
Connect to the power supply.

3 Connect

This section helps you connect your subwoofer to a TV and other devices, and then set it up.

Note

- For identification and supply ratings, see the type plate at the back or bottom of the product.
- Before you make or change any connections, make sure that all devices are disconnected from the power outlet.

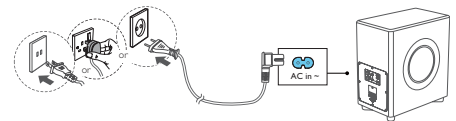


Connect to power

WARNING!

- Risk of product damage! Make sure that the power supply voltage corresponds to the voltage printed on the back or the underside of the product.
- Risk of electric shock! When you unplug the power cord, always pull the plug from the socket. Never pull the cord.
- Before connecting the AC power cord, ensure you have completed all other connections.

Connect the mains cable to the **AC in-**socket of the subwoofer and then into a mains socket.



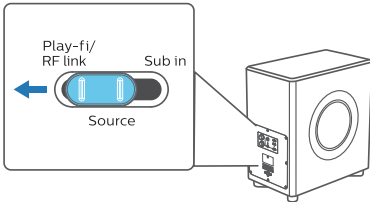
* Power cord quantity and plug type vary by regions.

Connection	Go to page
A Pairing with FB1 soundbar (initial set up to RF-link)	10
B Wi-Fi Set up	11
C Connect the subwoofer to Philips Play-fi enabled TV	13
D Wired connection (Sub-in)	14

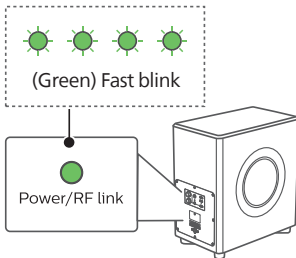
Pairing with FB1 soundbar (Initial set up to RF-link)

FW1 Play-Fi wireless subwoofer can pair with FB1 (not supplied) soundbar.

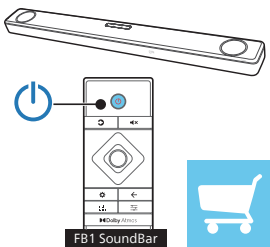
- 1 The source switch must be at **Play-fi/ RF Link** position.



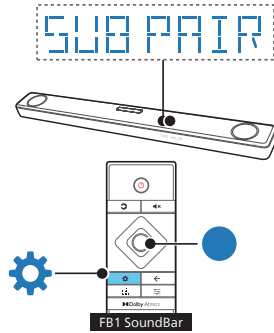
- 2 The **Power/RF link** indicator will (Green) fast blink on the Subwoofer.



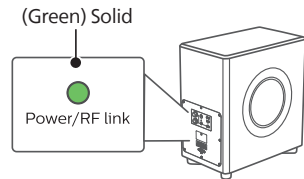
- 3 Press the **⏻** button to turn your FB1 soundbar on.



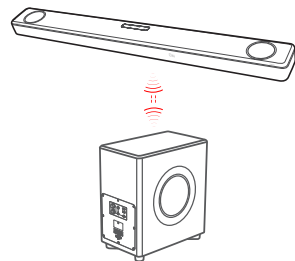
- 4 On FB1 soundbar remote control, enter setting menu:
↳ Press **⚙** > select **"SUB PAIR"** > Then press **⏻** (Enter) to confirm the subwoofer pairing mode.



- 5 Wait until the **Power/RF link** indicator will light up solid on the subwoofer.



- 6 Soundbar and subwoofer shall discover each other and pair.



Wi-Fi Set up

(For iOS and Android version)

By connecting this unit and mobile phones, tablets (such as iPad, iPhone, iPod touch, Android phones, etc.) to the same Wi-Fi network, you can then use the Philips Sound app powered by DTS Play-fi to control the subwoofer to listen to audio files.

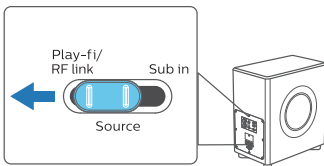
- 1 Download and install the Philips Sound app powered by DTS Play-fi on a phone or tablet.



- Make sure your router is turned on and working properly.
- 2 Connect your phone or tablet to the same Wi-Fi network that you want to connect your subwoofer.

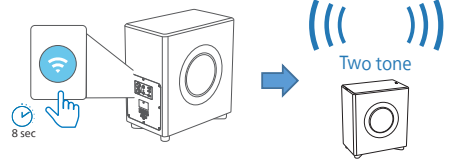


- When FW1 is used as a Play-fi subwoofer, source switch must be at **Play-fi/RF Link** position.

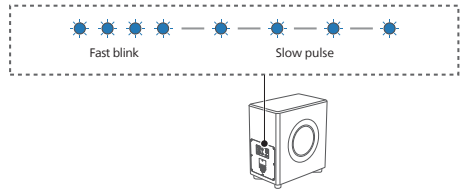


- 3 Press and hold (Wi-Fi) button located at the back cabinet for 8 sec to trigger the Wi-Fi connection.

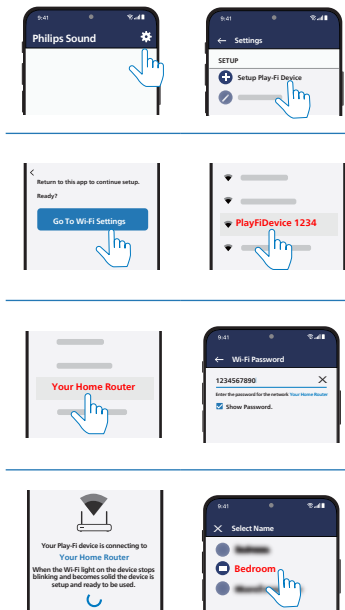
- ↳ Until the speaker make a second tone and then release the button.



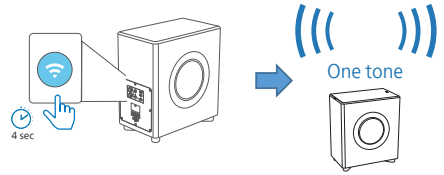
- 4 Wait until the Wi-Fi light indicator on the back cabinet goes from a fast blink to a slow pulse. When it begins pulsing slowly, it indicates that the speaker is entering the Wi-Fi setup mode.



- 5 Launch the Philips Sound app powered by DTS Play-fi. Follow the instructions in the app to connect this product to your Wi-Fi network.



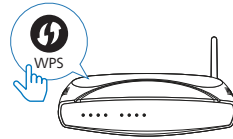
- 6 After successful Wi-Fi connection, the Wi-Fi light indicator will stop pulsing and turn solid. Once you set up this product on your Wi-Fi network, you can control it from any smartphone or tablet on the same network.
- 7 After connection, you can change the device name. There are several names to choose from or create your own by choosing Custom Name at the end of the name list. Otherwise, it follows the default name.
- 8 After connection, this product may perform a software update. Upgrade to the latest software when it is your first time set up. The software upgrade may take several minutes. Do not unplug your speaker, turn off your device, or leave the network during the update.



↳ You will hear a tone and the Wi-Fi light will begin double blink.



- 2 Press the **WPS** button on your router. The button is normally marked with this WPS logo.



- 3 Follow the instruction in Philips Sound app powered by DTS Play-Fi to start the pairing.



Note

- After connection, the product may perform a software update. Upgrade is required after initial set up. Without the upgrade, not all product features can be available.
- When the first time set up is not successful, hold down the Wi-Fi button on the subwoofer for 8 seconds until the second tone can be heard and the Wi-Fi light is changed to a slow pulse. Reset the Wi-Fi connection, restart the app and start the set up again.
- If you want to change from one network to another, you need to set up the connection again. Press hold down the (Wi-Fi) button on the subwoofer for 8 seconds to reset the Wi-Fi connection.

Wi-Fi Protected Setup (WPS)

If your router has Wi-Fi Protected Setup (WPS), you can set up the connection without entering a password.

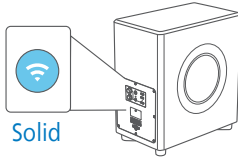
- 1 Press and hold the (Wi-Fi) button for 4 seconds.

Note

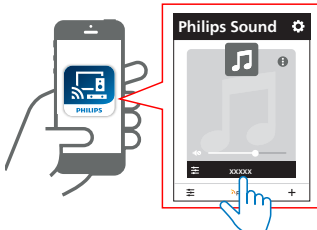
- WPS is not a standard feature on all routers. If your router does not have WPS then use Standard Wi-Fi Setup.
- Press the (Wi-Fi) button once if you want to exit the WPS mode or it will automatically exit after 2 minutes.

Connect the subwoofer with Philips Sound app

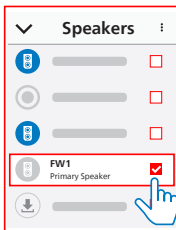
- 1 After successful Wi-Fi connection, the Wi-Fi light indicator will stop pulsing and turn solid.



- 2 Launch the Philips Sound app powered by DTS Play-fi .

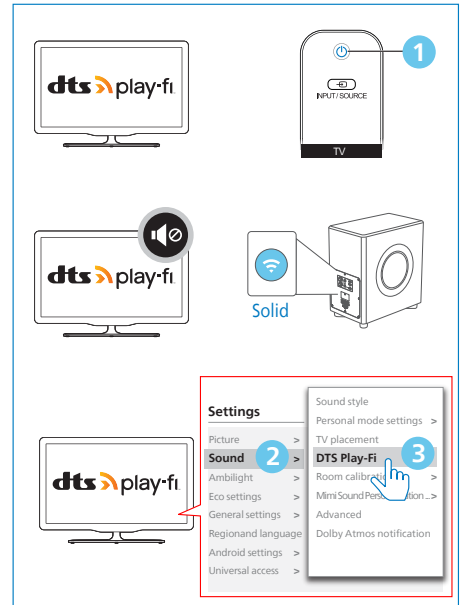


- 3 Select the Primary Speaker [FW1].



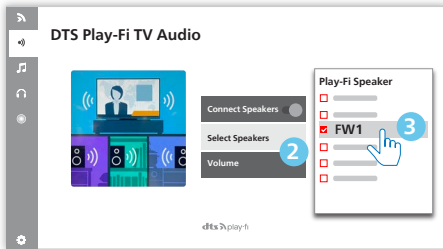
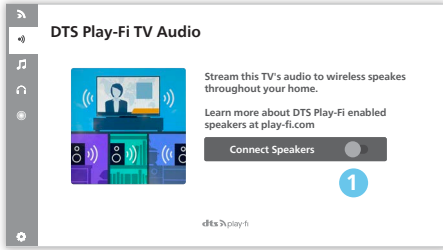
Connect the subwoofer to Philips Play-fi enabled TV

- 1 Power up your DTS Play-fi TV connected to the internet.
↳ TV sound is muted.
- 2 Enter the Settings menu on TV.
↳ Settings > Sound > DTS Play-fi



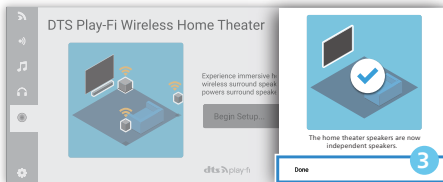
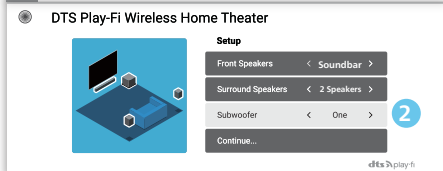
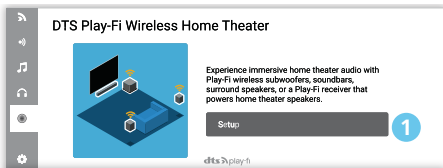
TV Audio Setup

Follow the on-screen setup.



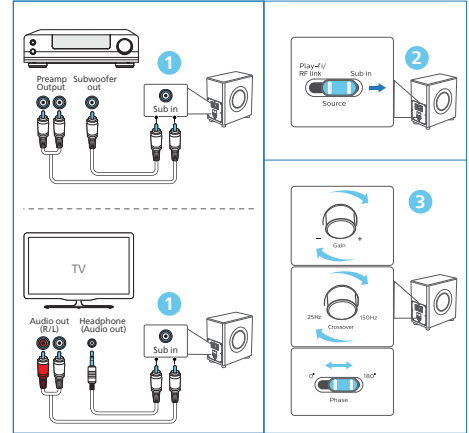
Surround sound Setup

Follow the on-screen setup.



Wired connection (Sub-in)

When source switch is at Sub-in source, FW1 shall behave as wired subwoofer. It shall render the subwoofer signal via analog input.



- 1 Use a subwoofer cable to connect the other device or TV's audio output sockets to the **Sub in** socket on the unit.
- 2 When FW1 is used as a wired subwoofer, source switch must be at Sub in position.
- 3 The available controls and functions (at the back of the subwoofer) are as below:

Functional Settings	Default
Gain	-6 dB to +6 dB 0 dB
Crossover	25 to 150 Hz -
Phase	0 or 180 degree 0 degree

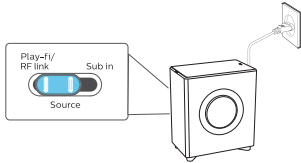
Note

- When FW1 as Play-Fi subwoofer, above controls and functions are not applicable.

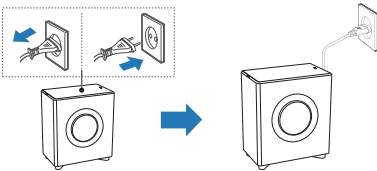
Wireless connection

(Play-Fi > RF link)

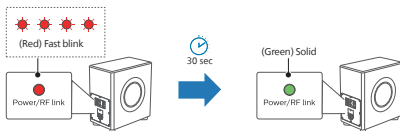
- 1 Connect the subwoofer to power and the source switch at **Play-fi/RF Link** position.




- 2 Unplug the power and connect the power again.

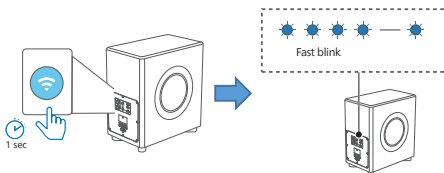


- 3 The Power/ RF link light indicator at the back cabinet turns from fast blink in red color to solid green after 30 seconds.



(RF link > Play-Fi)

- 1 Press the  (Wi-Fi) button located at the back cabinet for 1 second.



- 2 The Wi-Fi light indicator on the back cabinet goes from a fast blinks to a slow pulse.

Upgrade firmware

To get the best features and support, update your product with the latest firmware version.

Update firmware via Philips Sound (Settings > Fine Tune / Update Firmware)

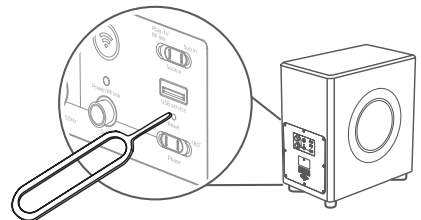
The firmware for MCU and DSP can be upgraded to the latest version via Philips Sound powered by DTS Play-fi. Please go to settings menu and select PS Fine Tune / Update Firmware option to check it out. If the upgrade is released, the upgraded icon can be pressed to proceed automatically.

Once this product is connected to Wi-Fi, it can receive over-the-air firmware update. Always upgrade with the latest firmware version to improve the performance of this product.

Factory reset

Reset device to default setting.

- 1 Connect the subwoofer to power, use a needle to push the **Reset** button on rear of subwoofer for 5 seconds.



- ↳ You will hear a tone and then the subwoofer will automatically restart.
- ↳ The subwoofer is restored to factory defaults.

4 Product specifications



Note

- Specifications and design are subject to change without notice.

Wireless

5.8G Wireless frequency range / Transmitter power (EIRP)	5742 ~ 5852 MHz ≤ 10dBm
--	----------------------------

Network supported

WiFi IEEE 802.11a/b/g/n/ac Wireless frequency band (Wi-Fi) /Radio frequency power transmitted (EIRP)

2.4G Wi-Fi	2400 ~ 2483.5 MHz / ≤ 20dBm
5G Wi-Fi	5150 ~ 5350 MHz / ≤ 20dBm
	5470 ~ 5725 MHz / ≤ 27dBm
	5725 ~ 5850 MHz / ≤ 14dBm

Subwoofer

Power supply	100-240V~ 50/60Hz
Output power (rated) Output power (max)	210W RMS 420W @ 1% THD
Power consumption	50 W
Standby consumption	< 0.5 W
USB	5V --- 500mA
Frequency Response	25Hz - 150Hz
Impedance	3 Ω
Dimensions (W x H x D)	240 x 472 x 400 mm
Weight	13.4 kg
Operating Temperature	0°C - 45°C

5 Troubleshooting



Note

- Never remove the casing of the product.

To keep the warranty valid, never try to repair the product yourself.

If you have problems using this product, check the following points before you request service. If you still have a problem, get support at www.philips.com/support.

No power

- Ensure that the AC cord is properly connected.
- Ensure that there is power at the AC outlet.

Sound

- When the playback freezes and there is no sound in Wi-Fi mode, please check whether your home network is normal.

Distorted sound or echo.

- If you play audio from TV through this product, make sure that the TV is muted.

Wi-Fi

Wi-Fi Connection cannot be established.

- Check the availability of WLAN network on the router.
- Place the Wi-Fi router closer to the unit.
- Make sure the password is correct.
- Check the WLAN function or reboot the modem and Wi-Fi router.

Play-fi

Cannot discover the play-fi supported devices from the app.

- Make sure the device is connected to the Wi-Fi.

Cannot play play-fi music.

- Certain network service or contents available through the device may not be accessible in case the service provider terminates its service.
- When the first time set up is not successful, close the Philips Sound app powered by DTS Play-fi. Restart the app.
- When the speaker was set as Stereo Pairs or Surround Sound, the speaker need to be disconnected in the app before use separately.



Specifications are subject to change without notice. Please visit www.Philips.com/support for the latest updates and documents.

Philips and the Philips Shield Emblem are registered trademarks of Koninklijke Philips N.V. and are used under license.

This product has been manufactured by and is sold under the responsibility of MMD Hong Kong Holding Limited, or one of its affiliates, and MMD Hong Kong Holding Limited, is the warrantor in relation to this product.

TAFW1RE_UM_EN_V1_20220505

