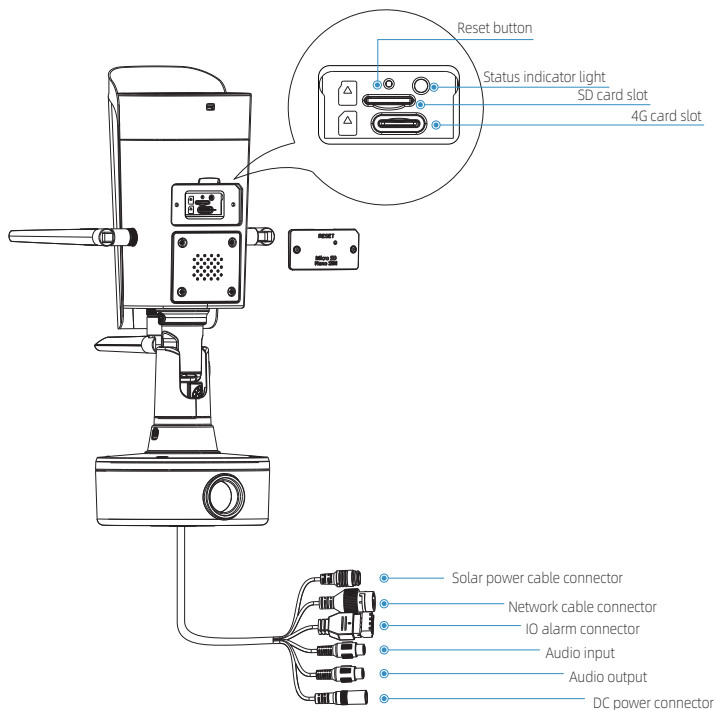


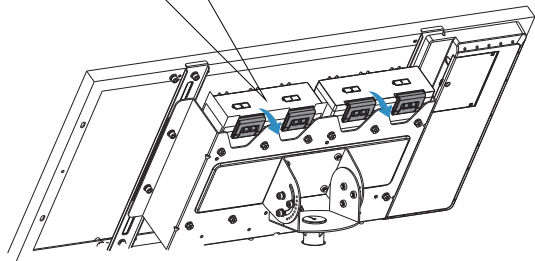
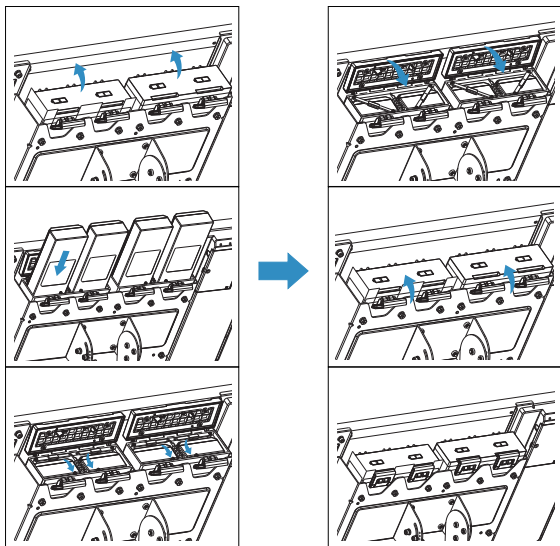
# **4G Solar-Powered Battery Camera**

**Quick Start Guide**

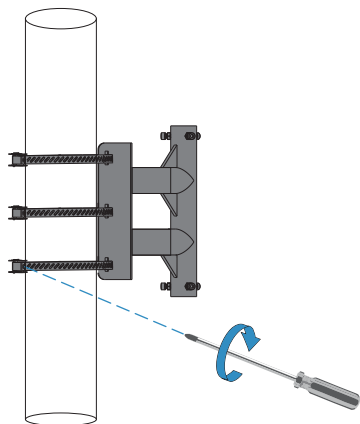
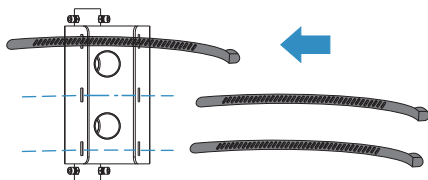
# Equipment installation



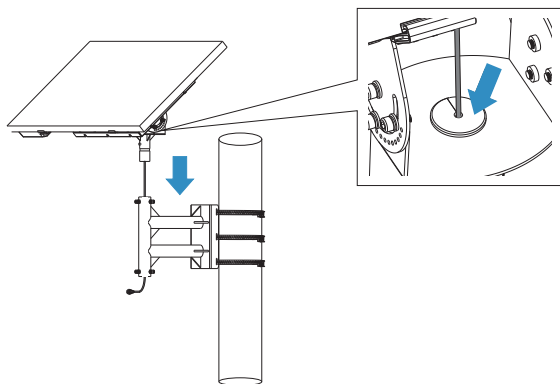
**Step 1:** Open the battery compartment cover, insert the batteries, and close the cover.



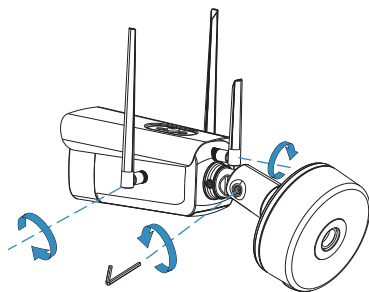
**Step 2:** Install the bracket clamp, select a suitable pole to secure the bracket, and tighten the screws.



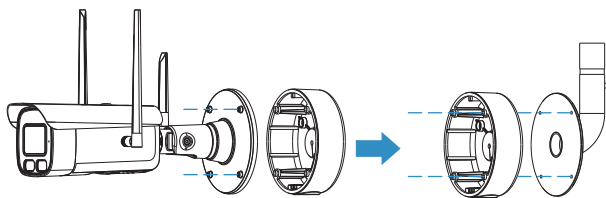
**Step 3:** Secure the connection cable with a rubber plug, install the solar panel facing downwards on the bracket, and tighten the screws.



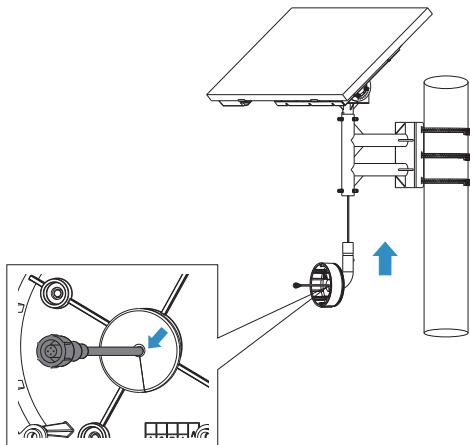
**Step 4:** Use a hex wrench to loosen the connecting rod screws, install the three antennas on the camera, and then tighten the loosened connecting rod screws.



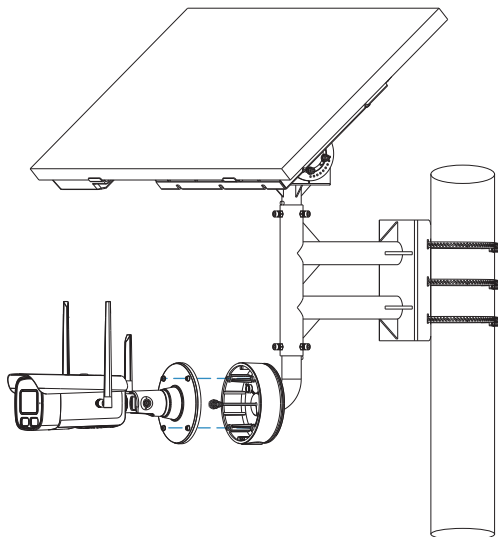
**Step 5:** Unscrew the four screws on the base of the camera, remove the base of the cable box, place it on the base mounting plate, and secure it with screws.



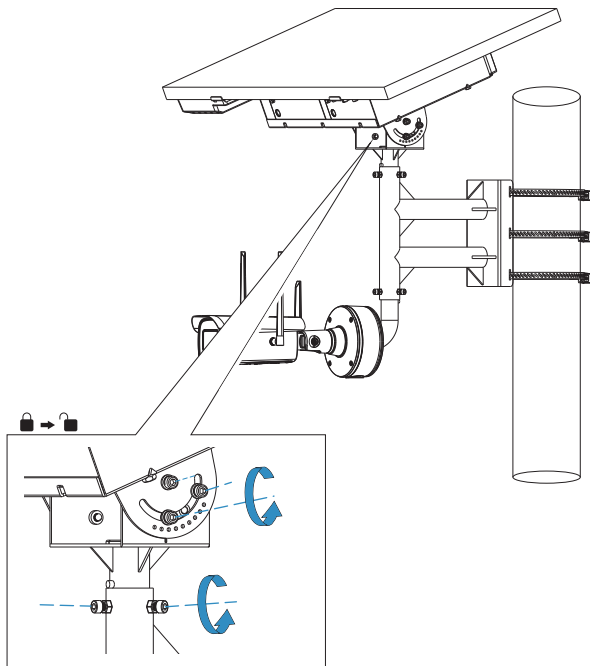
**Step 6:** Secure the connection cable with a rubber plug, attach the base mounting plate to the bracket facing upward, and tighten the screws.



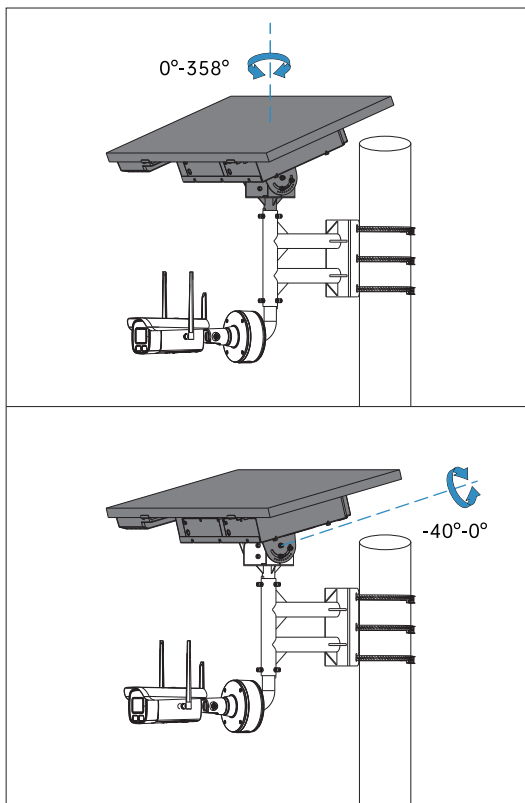
**Step 7:** Connect the cable, secure the camera to the cable box base, and tighten the screws.



**Step 8:** Loosen the fixing screws to adjust the horizontal and vertical angles of the solar panel. Once the angles are set, tighten the fixing screws.



**Step 9:** Solar panel horizontal adjustment angle:  $0^{\circ}$ - $358^{\circ}$ , vertical adjustment angle:  $-40^{\circ}$ - $0^{\circ}$



## APP Installation

### Download the APP

- Download the app from the App Store(IOS devices) or Google Play (Android devices).



- Scan the QR code below to download the APP



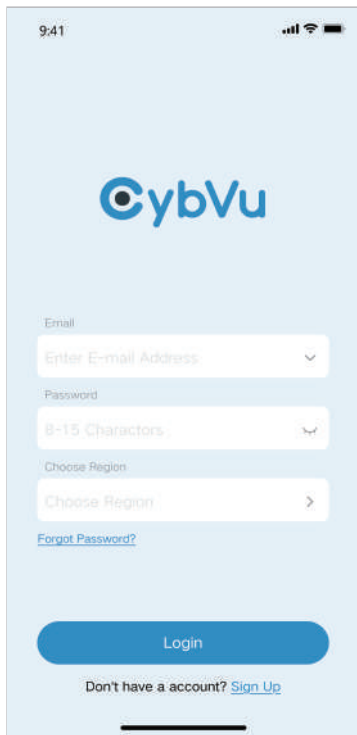
For IOS



For Android

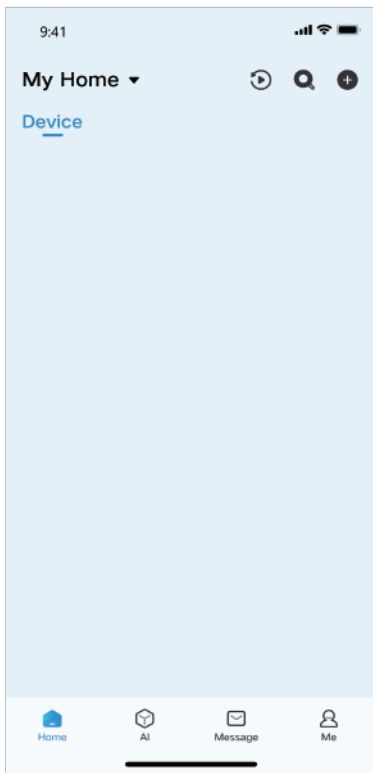
## The method of adding a 4G card

Run the APP, input user name and password, Choose Region, then tap <Login>.

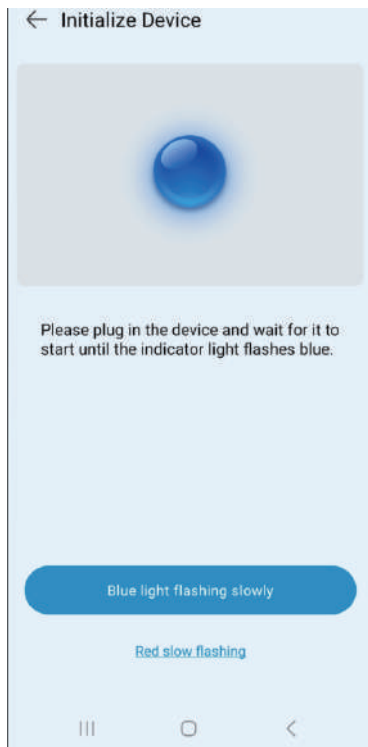


The screenshot shows the CybVu mobile application's login interface. At the top, the status bar displays the time 9:41, signal strength, Wi-Fi, and battery icons. The CybVu logo is centered. Below it are three input fields: 'Email' with a placeholder 'Enter E-mail Address', 'Password' with a placeholder '8-15 Characters', and 'Choose Region' with a placeholder 'Choose Region'. A link for 'Forgot Password?' is positioned below the region selector. A blue 'Login' button is at the bottom, with a 'Don't have an account? Sign Up' link underneath it.

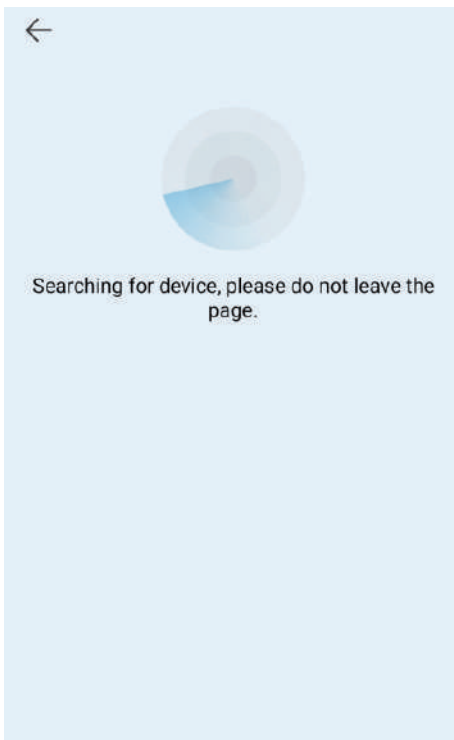
After tap <Login> will reach the Home menu.



Open the App, scan the QR code on the device, and enter this page.



Click "Blue light flashing slowly" to enter the search page.



After the search is completed, enter the device activation page and set the activation password.

[Cancel](#)

**Please setup a Login password for your device.**

**User name** admin

---

**New password**

8-16 characters ▼

---

**Confirm new password**

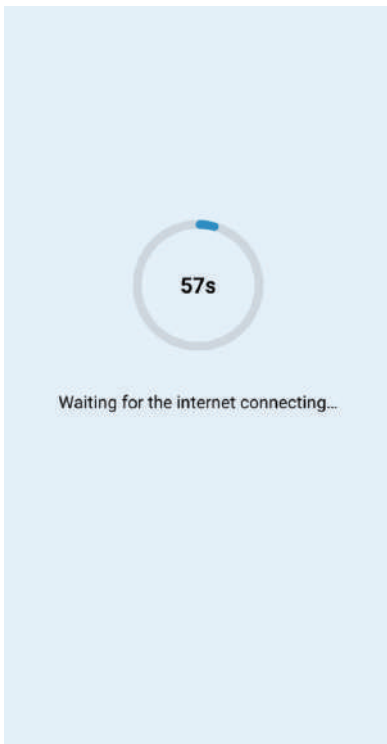
8-16 characters ▼

---

[Password rules](#)

Next

After setting the password, click "Next" to enter the pairing page. You need to wait for 10 to 20 seconds for the pairing to be successful.



After a successful pairing, you will be redirected to the "Name Device" page and click "Next".

**Device Name** Skip

Give your device a name.

Device Name

IPC

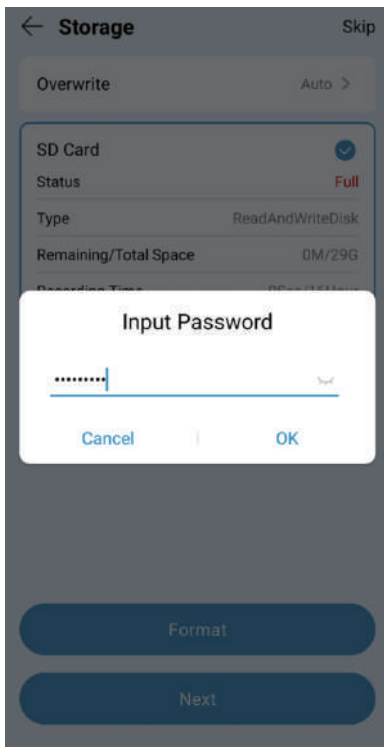
Next

Enter the "Time Zone Settings" page, set the time zone, and click Next.

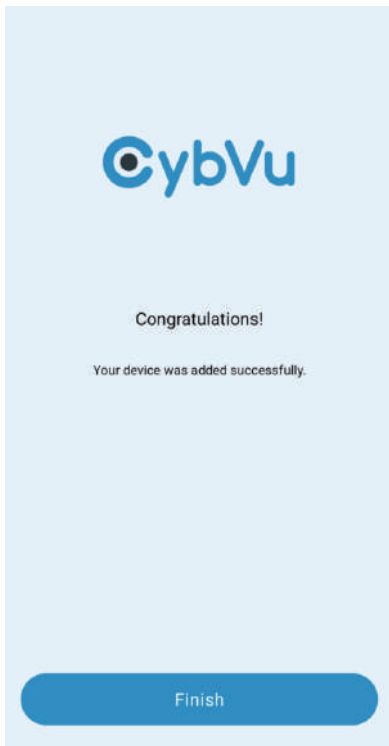
Select Time Zone		Skip
<input type="text" value="America"/>		
America_Hawaii		GMT-10:00
America_Honolulu		GMT-10:00
America_Indiana Starke		GMT-6:00
America_Indianapolis		GMT-5:00
America_Juneau		GMT-9:00
America_Knox		GMT-6:00
America_Los Angeles		GMT-8:00
America_Louisville		GMT-5:00
America_Marengo		GMT-5:00
America_Menominee		GMT-6:00

Next

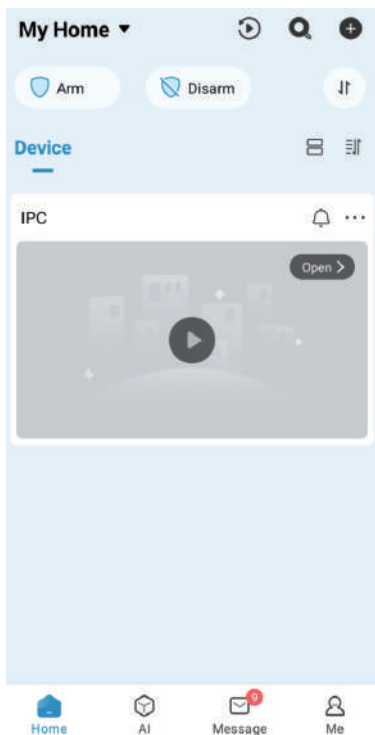
Enter the "SD Card Formatting "page, select the SD card and enter the activation password, then click Next.



Jump to the "Add Successful" page and click "Finish" to enter the APP's home page.



Enter the home page of the APP to view the IPCs that have been successfully added.



## **FC** Compliance Statement

This device contains licence-exempt transmitter(s)/receiver(s) that comply with Part 15 of the FCC Rules. Operation is subject to the following two conditions:

- (1) This device may not cause interference.
- (2) This device must accept any interference, including interference that may cause undesired operation of the device.

Caution: The user is cautioned that changes or modifications not expressly approved by the party responsible for compliance could void the user's authority to operate the equipment.

NOTE: This equipment has been tested and found to comply with the limits for a Class B digital device, pursuant to Part 15 of the FCC Rules. These limits are designed to provide reasonable protection against harmful interference in a residential installation. This equipment generates, uses and can radiate radio frequency energy and, if not installed and used in accordance with the instructions, may cause harmful interference to radio communications. However, there is no guarantee that interference will not occur in a particular installation.

If this equipment does cause harmful interference to radio or television reception, which can be determined by turning the equipment off and on, the user is encouraged to try to correct the interference by one or more of the following measures:

- Reorient or relocate the receiving antenna.
- Increase the separation between the equipment and receiver.
- Connect the equipment into an outlet on a circuit different from that to which the receiver is connected.
- Consult the dealer or an experienced radio/TV technician for help.

### **FCC Radiation Exposure Statement:**

This equipment complies with FCC radiation exposure limits set forth for an uncontrolled environment. This equipment should be installed and operated with a minimum distance of 20cm between the radiator and your body. This transmitter must not be co-located or operating in conjunction with any other antenna or transmitter.

## Simplified EU Declaration of Conformity

SmartCam View declares that this device is in compliance with the essential requirements and other relevant provision of Directive ETSI EN 300 328,ETSI EN 301 511,ETSI EN 301 908-1,ETSI EN 301 908-2,ETSI TS 134 121-1 ,ETSI EN 301 908-13,ETSI TS 136 521-1,EN IEC 62311,EN 50665,ETSI EN 301 489-1,ETSI EN 301 489-17,ETSI EN 301 489-52,EN 55032,EN 55035,EN IEC 61000-3-2,EN 61000-3-3,EN IEC 62368-1.



### Correct Disposal of This Product

Please recycle this product responsibly to promote the sustainable reuse of material resources and avoid potential harm to the environment.



### Correct Disposal of This Product

This marking indicates that this product should not be disposed with other household wastes throughout the EU. To prevent possible harm to the environment or human health from uncontrolled waste disposal, recycle it responsibly to promote the sustainable reuse of material resources. To return your used device, please use the return and collection systems or contact the retailer where the product was purchased. They can take this product for environment safe recycling.