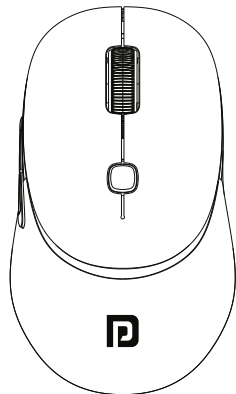




TOAD NEO

Dual Mode Rechargeable Wireless Mouse

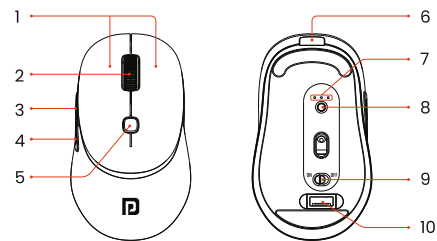


User Manual

What's inside the box

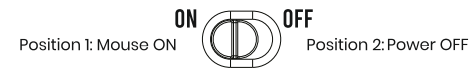
- 1 x Wireless Mouse
- 1 x USB Receiver
- 1 x Type-C Charging Cable
- 1 x User Manual

Physical Specifications



- 1- Left and Right Buttons
- 2- Scroll Wheel
- 3- Forward Button
- 4- Backward
- 5- DPI Adjust Button
- 6- Type-C Charging Port
- 7- Connectivity Mode Light
- 8- Mode switch button
- 9- Power On-Off
- 10- 2.4G Receiver

Switching On-Off



Charging

- Plug the Type-C charging cable provided into the charging port of the mouse.
- When charging, the mouse's LED lights up green, and turns off when fully charged.
- Allow up to 2 hours to completely charge the mouse.



NOTE: Use only a USB-A to Type-C charging cable for charging the mouse.

Multi-Pairing Connectivity

The mouse can be paired with up to three devices simultaneously—one using the USB receiver (2.4GHz mode) and two via Bluetooth. You can easily switch between 2.4GHz mode, "Toad Neo" Bluetooth mode, and "Toad Neo 2" Bluetooth mode by pressing the connectivity mode button.

Modes

Wireless Connectivity : The mouse supports two wireless connection modes:

- USB Receiver (2.4GHz)
- Bluetooth

i. Connecting via Bluetooth :

Follow the steps below to pair the mouse with laptops, tablets, or smartphones using Bluetooth:

Step 1 : Power on the mouse. The blue light inside the optical sensor will turn on for 2 seconds and then switch off to save power. Please note that the mouse remains powered on.

Step 2 : Press and hold the Connectivity Mode Button for 2 seconds. The mouse will enter Bluetooth pairing mode.

Step 3 : Open the Bluetooth settings on your device (laptop, tablet, or smartphone), enable Bluetooth, search for available devices, and select the mouse to connect.

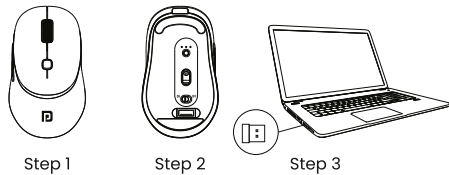
Step 4 : Once the connection is successful, the indicator on the back side will turn on, and the mouse is ready to use.

ii. Connecting via 2.4GHz USB Receiver

Step 1 : Power on the mouse and remove the USB receiver from the receiver compartment located at the bottom of the mouse.

Step 2 : Plug the USB receiver into the USB port of your laptop or desktop PC.

Step 3 : The mouse should now be connected to your device and ready to be used.



Auto sleep mode functionality

To save power, the mouse goes into Sleep Mode after 10 minutes of inactivity. Simply press the left or right mouse button to awaken the mouse.

Please Note :

- Please switch off the mouse before cleaning it.
- Do not use any chemicals, solvents or cleaning solutions containing alcohol, ammonia and abrasives.
- Ensure that no liquid or excessive moisture enters the openings of the mouse.

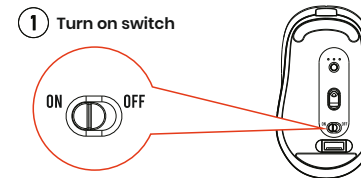
Product Specifications

Wireless Technology	2.4 GHz & Bluetooth
Number of Buttons	6 Buttons (including Scroll Wheel)
Power Source	Rechargeable Battery Built-in
Charging Time	2 hours
Optical Resolution	1200(Default)-1600-2400-3200
Charging Port	Type-C
Interface	USB Receiver & Wireless Bluetooth
System Requirements	OS: Windows 11, macOS 12, iOS 12, Android 11 and higher versions

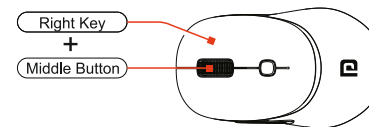
Warranty Note

Any damage caused by physical impact, water / liquid, fire, etc. caused by the customer or nature shall not be covered under warranty. Only product design, feature and functionality-related faults can be considered. During the warranty period, this product is only eligible for replacement and not eligible for repair, as per the brand's discretion.

Reset method for USB receiver



2 Long press Right + Middle Key



3 Plug Receiver, Paired



Tips: Long press Right+Middle Key, plug receiver, paired



E-Waste Management
E: info@3rrecycler.com

For E-Waste & ROHS compliance refer to www.portronics.com/ewaste

www.portronics.com

For Support

Visit : www.portronics.com

E-mail : help@portronics.com

Contact No.: +91 955245245

(Working Hours: Monday – Saturday, 10:00am – 6:00pm)