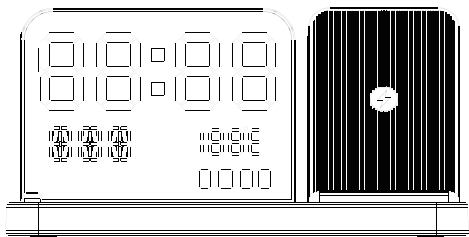




Acer Wireless Charging Station

User Manual



S1

PRODUCT SPECIFICATIONS

Model: S1

Wireless Output: 3W / 5W / 7.5W / 10W / 15W

TYPE-C Input: 5V=3A / 9V=3.33A / 12V=2.5A

TYPE-C Output: 5V=2A

USB-A Output: 5V=2A

Size: 215x160x107mm

Product Weight: 515g



Wireless Charging



Night Light



Phone Stand



Watch Charger

V USING BLUETOOTH TIMESYNC



1. Phone Wireless Charging 1

3.iWatch Wireless Charging

5.Nightlight Touch pad

7. C / F Button

9. WEEK Button

11. MIN Button

13.TYPE-C Output

2. Phone Wireless Charging 2

4. Earbuds Wireless Charging

6. LED Screen Touch pad

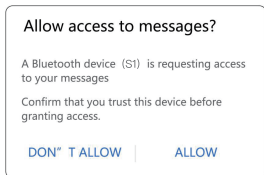
8. 12/24 Button

10. HOUR Button

12. USB-A Output

14. TYPE-C Input

Open the product. Open phone **SETTING - BLUETOOTH - CONNECT A NEW DEVICE** - select device “S1” and connect (Note: For **Android user**, please allow access to messages to activate time sync function)



USING WIRELESS CHARGING

Place the device into corresponding area like the figure below to charge your device



USING THE NIGHT LIGHT

I. Tap - Switch the light color

II. Long press - Adjust the brightness (range: 10%-100%)



USE THE DISPLAY SCREEN

I. Single click - Adjust time brightness

(Range: 100%-80%-50%-25%-0)

II. Temperature display is based on ambient air temperature, not outdoor temperature or temperature shown on the phone



USE SIDE BUTTON

- I. Click the C/F button to switch Celsius and Fahrenheit
- II. Click the 12/24-Hour button to switch between 12-hour and 24-hour time formats
- III. Long press the WEEK button to enter day of week setting mode. Adjust and release button to complete automatically.
- IV. Long press the HOUR button to enter hour setting mode. Adjust and release button to complete automatically.
- V. Long press the MIN button to enter minute setting mode. Adjust and release button to complete automatically.

INFORMATION TO USER

Any unauthorized changes or modifications not expressly approved by the compliance authority may void the user's authority to operate the equipment

FCC STATEMENT

This device complies with Part 15 of the FCC Rules. Operation is subject to the following two conditions: (1) this device may not cause harmful interference, and (2) this device must accept any interference received, including interference that may cause undesired operation.

This equipment has been tested and found to comply with the limits for a Class B digital device, pursuant to part 15 of the FCC Rules. These limits are designed to provide reasonable protection against harmful interference in a residential installation.

This equipment generates, uses and can radiate radio frequency energy and, if not installed and used in accordance with the instructions, may cause harmful interference to radio communications. However, there is no guarantee that interference will not occur in a particular installation. If this equipment does cause harmful interference to radio or television reception, which can be determined by turning the equipment off and on, the user is encouraged to try to correct the interference by one or more of the following measures:

- Reorient or relocate the receiving antenna.
- Increase the separation between the equipment and receiver.
- Connect the equipment into an outlet on a circuit different from that to which the receiver is connected.
- Consult the dealer or an experienced radio/TV technician for help.

Any changes or modification not expressly approved by the manufacturer could void the user's authority to operate this product.

RF WARNING FOR MOBILE DEVICE

This equipment complies with FCC radiation exposure limits set forth for an uncontrolled environment. This equipment should be installed and operated with minimum distance 20cm between the radiator & your body.



Made in China

DISPOSAL OF WASTE EQUIPMENT BY USER IN PRIVATE HOUSEHOLD

Do not throw this electronic device into the trash when discarding. To minimize pollution and ensure utmost protection of the global environment, please recycle. Check with your local Authority for recycling advice.

WARRANTY & CUSTOMER SERVICE

Thank you for purchasing our product. We provide comprehensive after-sales service to ensure you have an excellent user experience. To safeguard your rights, please read the following warranty instructions carefully:

1. This product offers a one-year warranty service under non-human factors:

(1) Returns and Exchanges: Supported within one month of purchase.

(2) Free Repairs: Supported within one year of purchase.

2. The warranty does not cover:

(1) Damage caused by improper use or unauthorized disassembly of the product.

(2) Product malfunctions caused by repairs not authorized by our company.

(3) Damage or malfunctions caused by external forces or other human factors.

The warranty period starts from the date of purchase. Please provide proof of purchase when seeking repairs. If proof of purchase is unavailable, the warranty period will be calculated from the manufacturing date.

3. For repairs and related inquiries, please contact our service email: **support@szjttech.com**

acer