



**FOXBC Spiral Helical Cutterhead for DeWalt DW735
DW735X DW735XE 13 Inch Planer**

User Manual



www.FOXBC.com

Helical Cutterhead for Dewalt DW735 Planer

Getting Started:

- Be sure that your machine is disconnected from its power source
- Be careful not to damage any of the carbide inserts while assembling and installing the head into the machine.
- Use a rubber mallet, dead blow hammer, or a block of wood with a regular hammer when tapping the cast housing.
- Blow or brush off the woodchips from the machine and clean the floor around the machine to help eliminate any possible slip hazard.

ASSEMBLY INSTRUCTIONS:

1.) Take the top cover off the planer after removing the 4 screws with the supplied hex wrench.



2.) Remove the 3 red thumb screws from the inside of the top. Now you can remove the inside dust cover. This will now leave the cutterhead exposed.



3.) Remove the dust collection port.





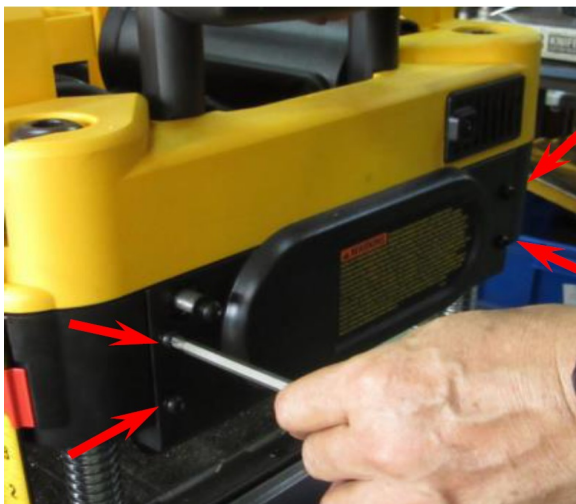
4.) Remove the crank wheel located on the side of the planer



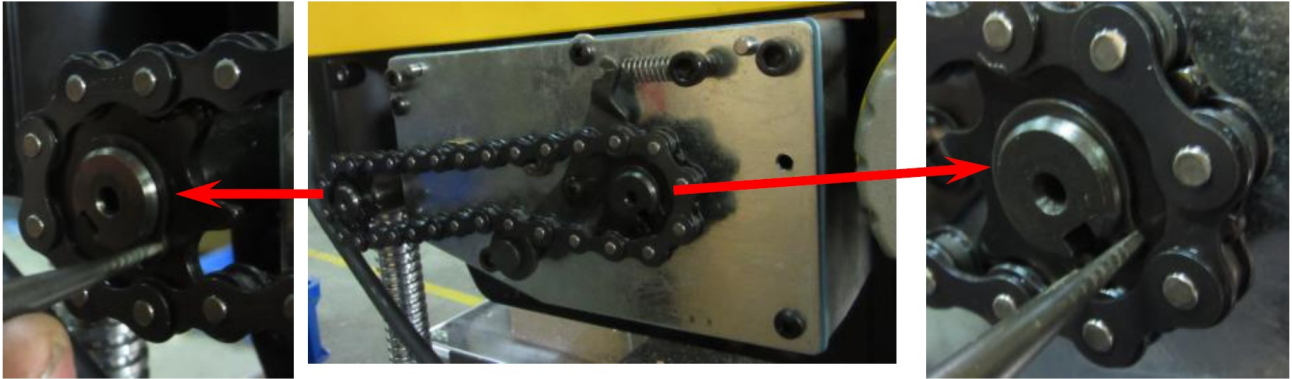
6.) Remove the left panel.



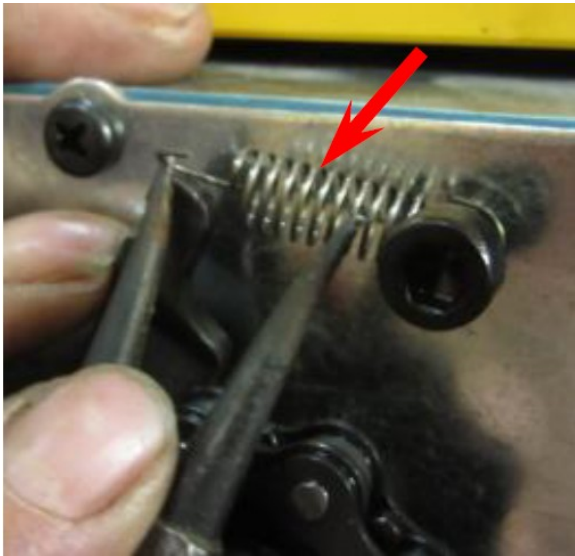
5.) Remove the right side panel.



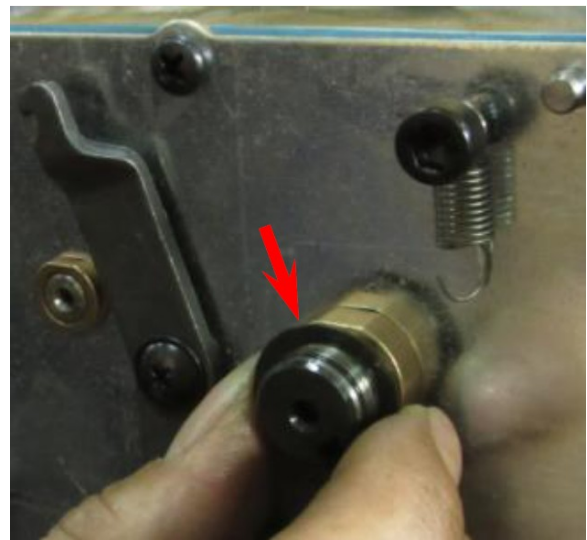
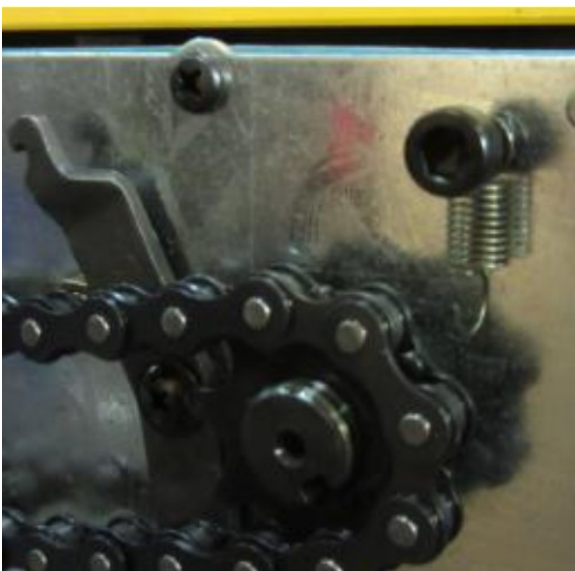
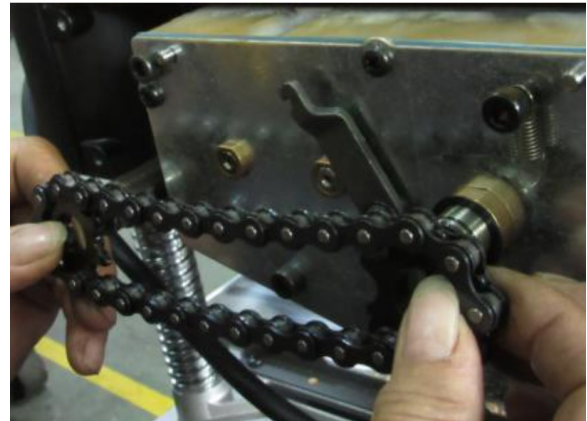
7.) Remove the snap rings for both front and rear rollers.



8.) Remove the spring.



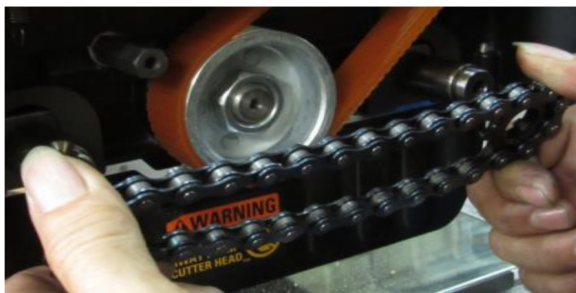
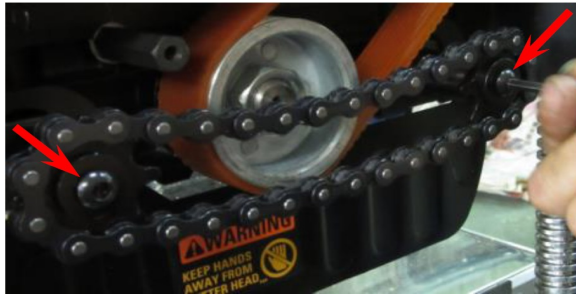
9.) Remove both the sprocket and the chain. Now remove the spacer.



10.) Remove the tension wheel assembly.



11.) Remove both the sprockets and chain from the front and rear rollers.



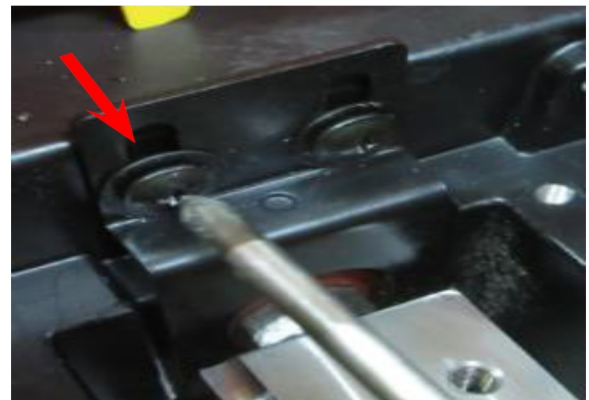
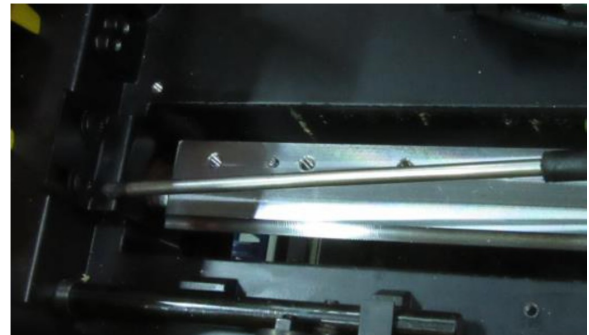
12.) Press the cutterhead lock plate and turn the cutterhead in order to remove the belt from the pulley.



13.) Keep the cutterhead stationary by pressing and holding the cutterhead lock plate. Now remove the knives along with the knife clamps.



14.) Remove the cutterhead lock plate.



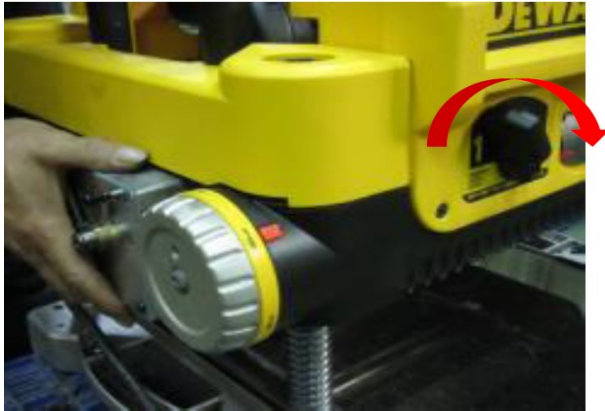
NOTE:

Repeat the above procedure 3 times to remove all three knives and knife clamps.

15.) Release the gear box screws



16.) Turn the speed adjustment knob to the right and pull out the gear box.



17.) Insert a board so that it is fully wedged between the carriage and cutterhead. Now you may remove the pinion gear by turning it counter clockwise.



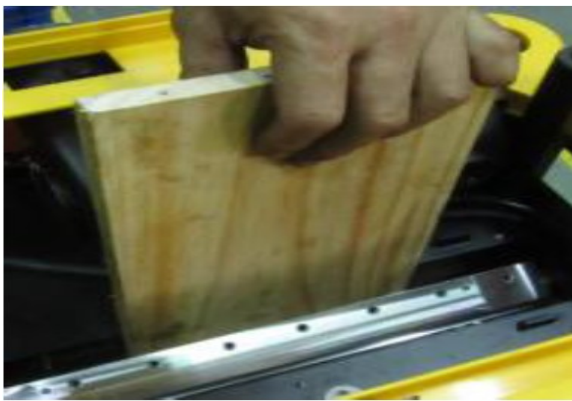
18.) Remove the R ring.



19.) Keep the board wedged firmly between the carriage and cutterhead. Now remove the pulley, key, and spacer.

NOTE

Board must be wedged tight between carriage and cutterhead.



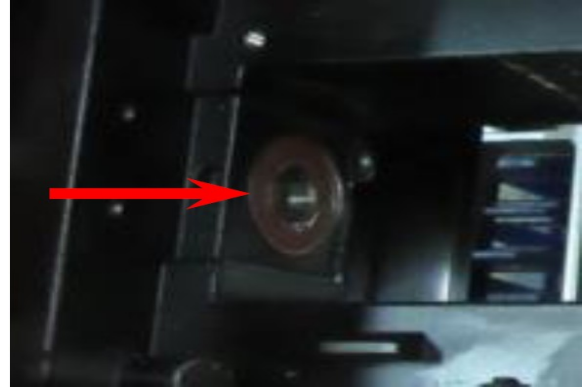
20.) Remove the snap ring.



21.) Secure the cap head screw to the cutterhead. Hammer the capo screw and remove the cutterhead from the carriage.



22.) Remove the bearings from the carriage.



23.) Prepare the Spiral head and 6202 and 6204 bearings ready for assembly.

CAUTION!!!

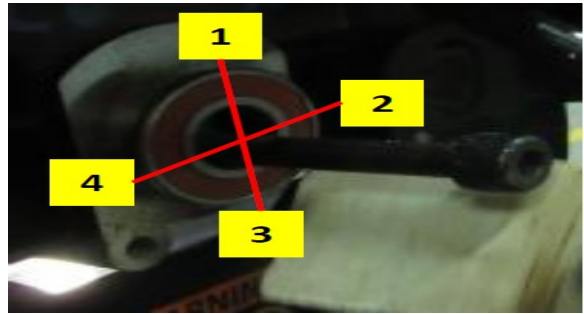
Wear thick leather gloves when handling the cutterhead to prevent accidental contact with the sharp inserts resulting in personal injury



6202 Bearing

6204 Bearing

24.) Put the Spiral head through the right hole then the left hole. Now secure a cap screw to the left threaded hole of the Spiral head. then remove the cap screw.



25.) Hammer the 6204 bearing into the right side of the carriage until the ring groove is exposed. Now install the snap ring into the carriage.

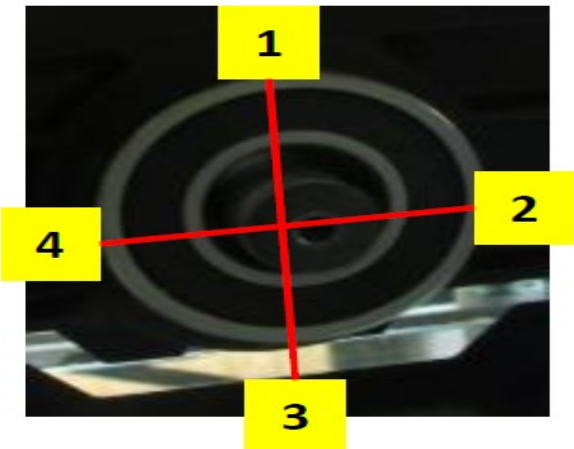
NOTE:
Use a wooden block or copper stick for hammering the bearing into place. Follow the numbered steps for hammering as indicated below.





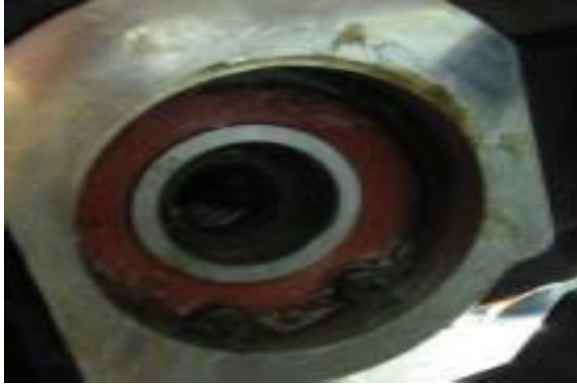
NOTE:

Use a wooden block or copper stick for hammering the bearing into place. Follow the numbered steps for hammering as indicated below.

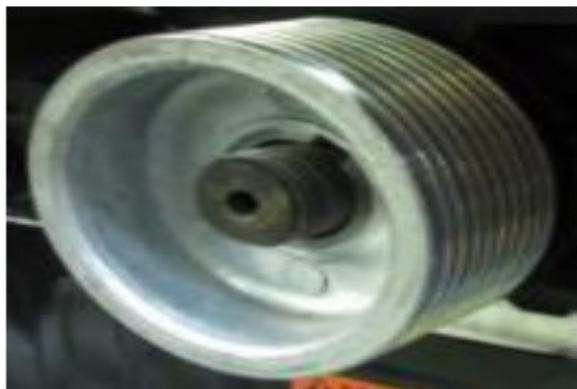


26.) Hammer the 6202 bearing in to the Spiral head until the ring groove is exposed. Now put the snap ring into the carriage.

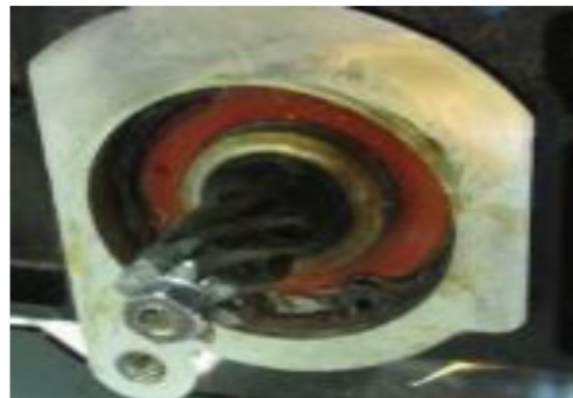




27.) Re-install the spacer, key, and pulley onto the Spiral head and secure it in place.

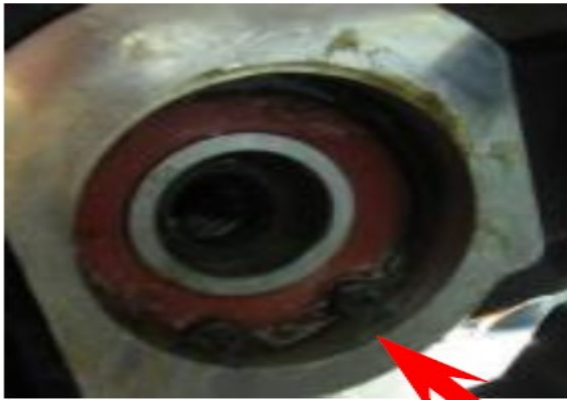


28.) Install the pinion gear in to the left side of the Spiral head and secure it in place.



NOTE:

Make sure that both the left and right snap rings are secured in place in the ring grooves of the carriage before securing the pulley and pinion gear. Now insert board and make sure that it is jammed tight between the carriage and the Spiral head.

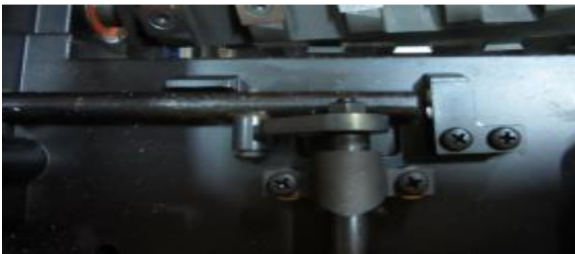
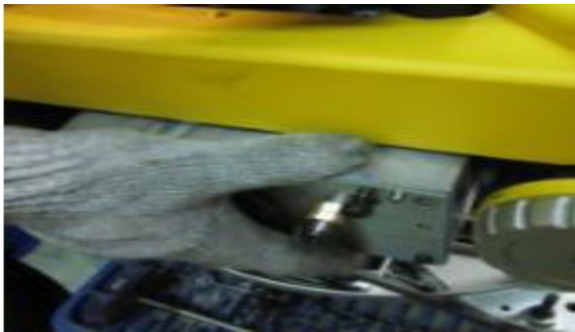


29.) Remove the belt cover to confirm that the belt is properly seated on the motor pulley, then put the belt on the pulley attached to the Spiral head and make sure that the belt is positioned properly. Now re-install the belt cover.





30.) Put the shaft of the gear box into the carriage hole and rotate the Spiral head pulley to make sure the positioning pin is guided into the correct position.

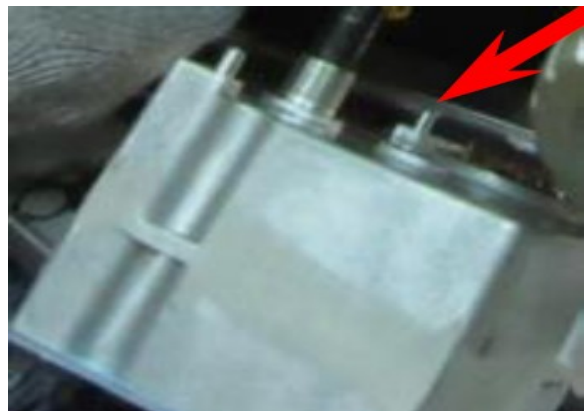


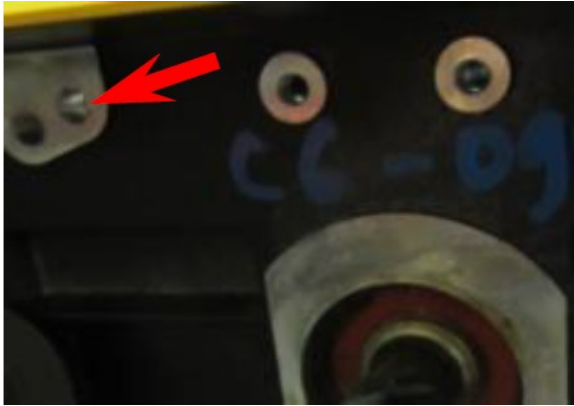
31.) Turn the speed knob to make sure the gear box shaft can go through the carriage U shaped hole. Check speed change knob function after assembly.



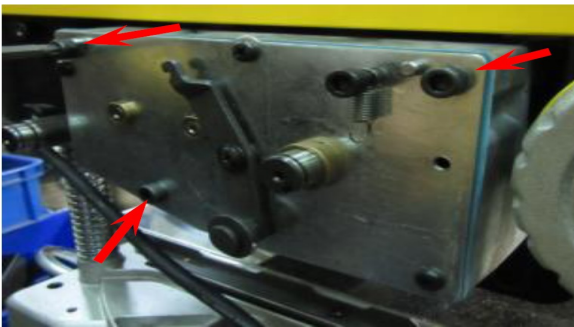
NOTE:

The locating pin on the gear box needs to be aligned and secured at the carriage.





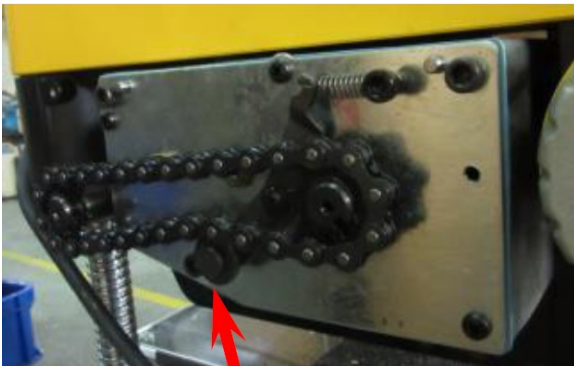
32.) Secure the gear box to the carriage.



33.) Re-install the spacer on the gear box shaft, then put the sprocket and chain on both the front and rear roller shafts. Now put the snap rings into the rear and front roller ring grooves.



34.) Pull and engage the spring in order to tension the wheel assembly groove and make sure that the idler is engaged along with the chain.



35.) Now secure the left side panel to the carriage.



36.) Put the sprocket and chain on the roller shaft located on the left side of the machine and secure the screws on the front and rear rollers.





37.) Install the shoulder screw to the tension wheel assembly and engage the spring to tension wheel assembly. Secure the shoulder screw and make sure the idler is engaged along with the chain.

38.) Secure the right side panel.





39.) Re-install the dust port back on to the machine carriage. Please note the “open” text orientation for the proper fit.



40.) Secure the dust port with the red thumb screws and re-install the top cover.



41.) Re-install the hand crank wheel. Once completed turn the machine on and test it.





NOTE:

FOXBC Tools is not responsible for any damage caused by improper installation of the cutterhead. Please check with manufacturer of your planer before installing as it may void your warranty.



WARRANTY

FOXBC warrants every product to be free from defects in materials and agrees to correct such defects where applicable. This warranty covers **one year** for parts and 90 days for labour (unless specified otherwise), to the original purchaser from the date of purchase but does not apply to malfunctions arising directly or indirectly from misuse, abuse, improper installation or assembly, negligence, accidents, repairs or alterations or lack of maintenance.

Proof of purchase is necessary.

All warranty claims are subject to inspection of such products or part thereof and FOXBC reserves the right to inspect any returned item before a refund or replacement may be issued.

This warranty shall not apply to consumable products such as blades, bits, belts, cutters, chisels, punches etceteras.

FOXBC shall in no event be liable for injuries, accidental or otherwise, death to persons or damage to property or for incidental contingent, special or consequential damages arising from the use of our products.

RETURNS, REPAIRS AND REPLACEMENTS

To return, repair, or replace a FOXBC product, you must visit the appropriate www.foxbc.com and contact us use email.

- All returned merchandise will be subject to a minimum charge of 15% for re-stocking and handling with the following qualifications.
- Returns must be pre-authorized by us in writing.
- We do not accept *collect* shipments.
- Items returned for warranty purposes must be insured and shipped pre-paid to the nearest warehouse

be in an un-used condition and shipped in their original packaging a letter explaining your reason for the return. Incurred shipping and handling charges are not refundable.

- FOXBC will repair or replace the item at our discretion and subject to our inspection.
- Repaired or replaced items will be returned to you pre-paid by our choice of carriers.
- FOXBC reserves the right to refuse reimbursement or repairs or replacement if a third party without our prior authorization has carried out repairs to the item.
- Repairs made by FOXBC are warranted for 30 days on parts and labour.
- Any unforeseen repair charges will be reported to you for acceptance prior to making the repairs.
- The FOXBC Parts & Service Departments are fully equipped to do repairs on all products purchased from us with the exception of some products that require the return to their authorized repair depots. A FOXBC representative will provide you with the necessary information to have this done.