

Hand Mixer

User's manual

EN



SENCOR®

SHM 6203SS

Prior to using this appliance, please read the user's manual thoroughly, even in cases, when one has already familiarised themselves with previous use of similar types of appliances. Only use the appliance in the manner described in this user's manual. Keep this user's manual in a safe place where it can be easily retrieved for future use.

We recommend saving the original shipping cardboard box, packaging material, receipt and warranty card for the duration of warranty. In the event of transportation, pack the appliance using the original packaging materials only.

Table of Contents

IMPORTANT SAFETY INSTRUCTIONS	4
DESCRIPTION OF THE HAND MIXER.....	5
OPERATING THE APPLIANCE.....	6
CLEANING AND MAINTENANCE.....	7
TECHNICAL SPECIFICATIONS	8
INSTRUCTIONS AND INFORMATION REGARDING THE DISPOSAL OF USED PACKAGING MATERIALS	8
DISPOSAL OF USED ELECTRICAL AND ELECTRONIC EQUIPMENT.....	8

IMPORTANT SAFETY INSTRUCTIONS

- Children must not use this appliance or play with it. Keep this appliance and its power cord out of reach of children.
- This appliance may be used by persons with physical or mental impairments or by inexperienced persons, if they are properly supervised or have been informed about how to use the product in a safe manner and understand the potential dangers.

IMPORTANT SAFETY INSTRUCTIONS READ CAREFULLY AND STORE FOR FUTURE USE

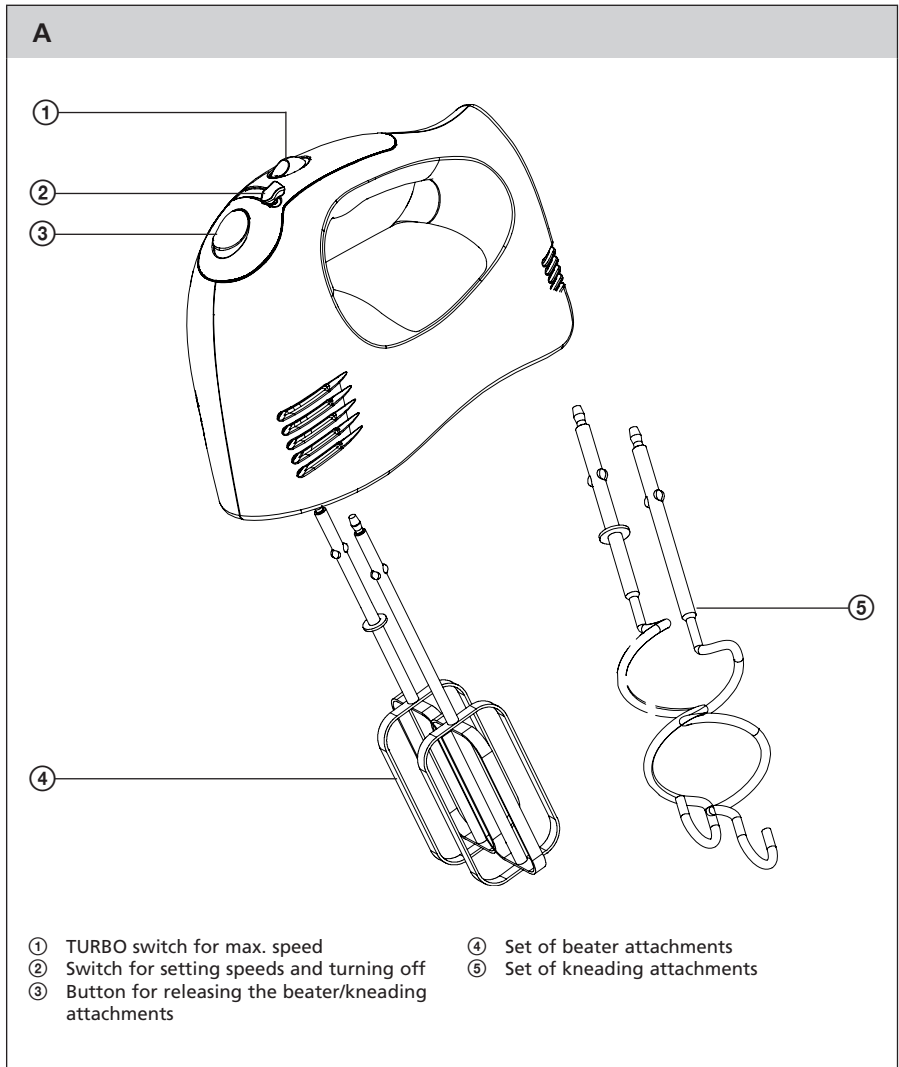
- Before connecting this appliance to a power socket, make sure the voltage shown on the rating label of the appliance corresponds to the voltage in your power socket.
- Never use accessories, which have not been supplied with this appliance or which have not been explicitly recommended by the manufacturer for this appliance.
- Do not place the appliance on window sills or on unstable surfaces. Always place the appliance on an even, dry surface.
- Make sure that the power cord and plug cannot come in contact with water or dampness.
- Do not spray the appliance with water or any other liquid. Never wash the motor unit under running water or submerge it in water or another liquid.
- The appliance is intended and designed for processing a standard amount of food in the household.
- Do not use the appliance for any other purposes than those intended.
- Do not use the appliance in an industrial environment or outdoors!
- Do not use sprays in the vicinity of the appliance.
- Before first use, it is necessary to thoroughly wash the beater and kneading attachments in hot water using kitchen detergent. Then rinse them with drinking water and dry thoroughly with a fine wiping cloth.
- Always turn off the appliance and disconnect it from the power socket when not using it and when leaving it without supervision, before assembly, disassembly or cleaning.
- Before attaching the beater or kneading attachments to the appliance, removing or replacing them, ensure that the appliance is turned off and disconnected from the power socket.
- Always check that the beater or kneading attachments are properly attached before turning on the appliance.
- When the kneading or beater attachments are properly attached to the appliance, first submerge them into the ingredients in the bowl and only then put the appliance into operation.
- The appliance must not run without a load. The incorrect use of the appliance may negatively affect its lifetime.
- Do not allow children to use the appliance without supervision. When not using the appliance, store it out of reach of children. If children were to get hold of the appliance without adult supervision then this could result in an injury to a child or damage to the appliance.
- Do not place the appliance on an electric or gas stove or in its vicinity, do not place it in the vicinity of an open fire or other equipment or appliances that are a source of heat.
- If the power cord is damaged, have it replaced at a professional service centre. It is forbidden to use the appliance if it has a damaged power cord/plug.
- In no case should you attempt to repair the appliance yourself, do not make any alterations to it – danger of injury by electric shock! Entrust all repairs and adjustments of this appliance to a specialised company/service. Tampering with the appliance during the warranty period may void the warranty.
- Do not place the power cord of the appliance near hot surfaces or over sharp objects. Do not place heavy objects on the power cord, position the cord so that it is not stepped on or tripped over. Make sure the power cable does not hang over the edge of a table or that it is not touching a hot surface.
- Do not disconnect the appliance from the power socket by pulling the power cord - it may damage the power cord/power socket. Disconnect the cable from the power socket by gently pulling the plug of the power cord.

Hand mixer

SHM 6203SS

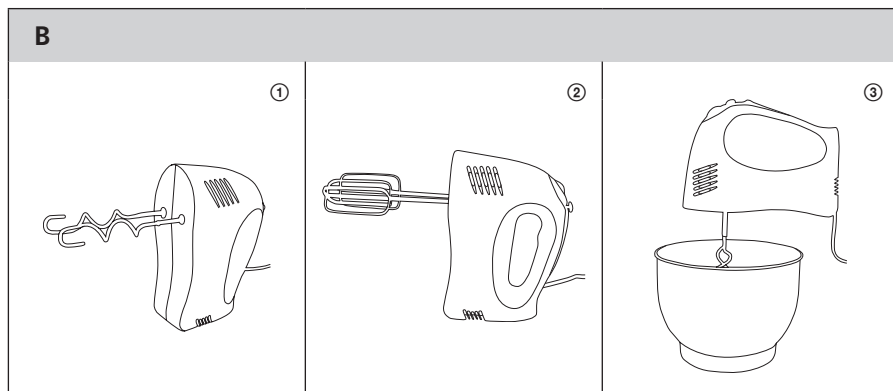
EN

DESCRIPTION OF THE HAND MIXER



OPERATING THE APPLIANCE

1. To assemble the appliance, insert the ends of the beater attachments into the holes (see figure 1). Push them in until they safely click into position. (Note: It is important that you proceed correctly when attaching the kneading attachments). Place the kneading attachment with the ring into the right hole and place the kneading attachment without the ring into the left hole.
2. Place ingredients into a bowl.
3. Submerge the beating or kneading attachments into the bowl containing the ingredients (see figure 3).
4. Connect the power cord of the appliance to an electrical power socket, turn the appliance on and select the required speed. Items such as kitchen knives, forks, must not be placed in the bowl while mixing as this could result in injury or damage to the appliance.
5. If you wish to mix at the highest level, press the TURBO button.
6. When you have finished using it, slide the switch to position 0 and pull the power cord out of the power socket. Press the attachment release button A[ⓐ] to release the beater or kneading attachments. The attachments can only be released when the switch is in position 0. When the switch is in positions 1–5, the attachments are locked in position against removal. For whipping, blending or kneading, always use the same type of attachment. It is not possible to combine the kneading and blender attachments.



Kneading attachments

These are used for kneading yeast dough, batter dough and dough for noodles, for mixing minced meat, spreads and puff dough.

Beater attachments

These are used to prepare batter dough, sponge cake dough, mashed potatoes, whipped cream, whipped egg whites, creams.

Speed selection

- 0 – off
- Level 1 – suitable as the initial speed for mixing a larger amount of food or dry ingredients such as flour, butter and potatoes
- Level 2 – suitable for processing liquid ingredients, for mixing salad dressings
- Level 3 – suitable for mixing ingredients when preparing cakes, biscuits and bread
- Level 4 – suitable for whipping up butter or sugar when preparing sweets, desserts, etc.
- Level 5 – suitable for whipping eggs, sauces, creams, etc.

Hand mixer

SHM 6203SS

EN

IMPORTANT NOTICE!

The appliance must be stopped for several minutes after it has been running continuously for 5 minutes so that the motor of the appliance can cool down.

Amount and processing time

Kneading attachments	Amount	Processing time	Speed selection
Yeast dough	max. 500 g of flour	max. 5 minutes	level 3

Beater attachments	Amount	Processing time	Speed selection
Light sauces, creams and soups	approx. 750 g	approx. 3.5 minutes	level 2
Mayonnaise	max. 3 egg yolks	approx. 2 minutes	level 5
Mashed potatoes	max. 750 g	max. 3.5 minutes	level 4
Whipped cream	max. 500 g	max. 5 minutes	level 5
Whipped egg whites	max. 5 egg whites	approx. 3.5 minutes	level 5
Cake dough	approx. 750 g	approx. 3.5 minutes	level 3

Initially beat at a low speed to prevent the dough from splashing out. Only thereafter can you change to a higher speed. For easier beating and kneading of dough we recommended soft margarine or butter.

CLEANING AND MAINTENANCE

Always turn off the appliance before cleaning it by sliding the switch to position 0 and disconnecting it from the power socket.

It is necessary to thoroughly clean the beaters or kneading attachments after every use in hot water and kitchen detergent. Then rinse them with drinking water and dry thoroughly with a fine wiping cloth. The beaters and kneading attachments are intended for short term contact with food (including beverages), i.e. max. 4 hours.

To clean the motor unit/motor cover, use a cloth dipped in a weak detergent solution. Never submerge the motor unit in water or in any other liquid!

Do not use thinners or solvents or any abrasive cleaning agents to clean the appliance – they may damage the surface.

If you will not be using the appliance, store it in a dry place out of children's reach. You can use the cardboard box of the appliance for storing the appliance (after first disassembling it).

TECHNICAL SPECIFICATIONS

Rated voltage	220–240 V
Rated frequency	50/60 Hz
Rated power input	300 W
Protection class:.....	II
Noise level:	85 dB (A)

The declared noise emission level of the appliance is 85 dB(A), which represents a level A of acoustic power with respect to a reference acoustic power of 1 pW.

INSTRUCTIONS AND INFORMATION REGARDING THE DISPOSAL OF USED PACKAGING MATERIALS

Dispose of used packaging material at a site designated for waste in your municipality.

DISPOSAL OF USED ELECTRICAL AND ELECTRONIC EQUIPMENT



This symbol on products or original documents means that used electric or electronic products must not be added to ordinary municipal waste. For proper disposal, renewal and recycling hand over these appliances to determined collection points. Alternatively, in some European Union states or other European countries you may return your appliances to the local retailer when buying an equivalent new appliance. Correct disposal of this product helps save valuable natural resources and prevents potential negative effects on the environment and human health, which could result from improper waste disposal. Ask your local authorities or collection facility for more details. In accordance with national regulations penalties may be imposed for the incorrect disposal of this type of waste.

For business entities in European Union states

If you want to dispose of electric or electronic appliances, ask your retailer or supplier for the necessary information.

Disposal in other countries outside the European Union.

This symbol is valid in the European Union. If you wish to dispose of this product, request the necessary information about the correct disposal method from the local council or from your retailer.



This appliance meets all the basic requirements of EU directives related to it.