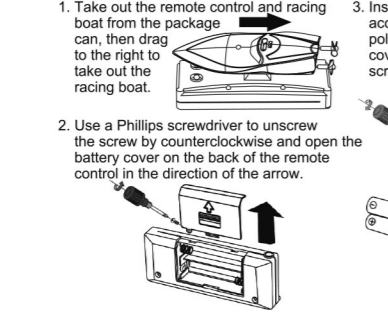




创新玩具
CREATE TOYS
ITEM NO.3329

PACKAGE CONTENTS

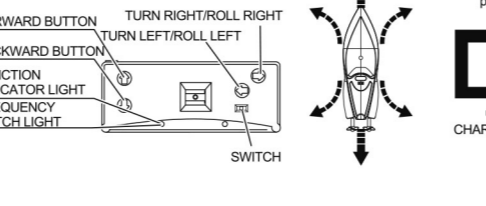


PREPARE

1. Take out the remote control and racing boat from the package can, then drag to the right to take out the racing boat.
2. Use a Phillips screwdriver to unscrew the screw by counterclockwise and open the battery cover on the back of the remote control in the direction of the arrow.
3. Insert 2 "AA" batteries according to the correct polarity, close the battery cover and tighten the screws.

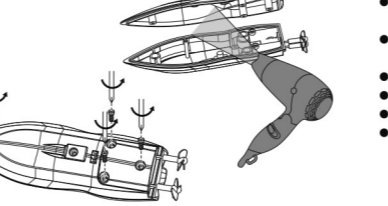
OPERATION

Note: There is no switch on the hull.
ON is when the contact point with water (as shown in Figure 1).
Off is when the contact point is dry (Figure 1, Figure 2).
When using, first put the rowing boat into the water. At this time, the rowing boat is powered on and the indicator light flashes. Turn on the switch of the remote control and the indicator light on the boat will always be on, indicating that the frequency matched successfully. Keep your hands away from the propeller and make sure there are no obstacles around the propeller to prevent injuries when the propeller rotates at high speed. If the operation stops, please turn off the remote control switch, take the racing boat out of the water, and wipe the water stains on the remote control boat with a cloth. (As shown in Figure 1 and Figure 2, when the two contact points of the rowing boat are wiped dry and the rowing boat indicator light does not light up, it is in a power-off state.)



CHARGE

1. The USB charging power cord has two terminals. Insert the square end into the socket hole in the hull, as the picture shows. The light turns on when charging and turns off when fully charged. A complete charging cycle takes about 15-20 minutes.
2. To ensure charging safety, please use the provided USB charging cable to charge the product.



WARM TIPS

If the boat is not working properly due to abnormal operation, or if water has accidentally entered the hull, the boat will not work properly. If the boat does not work properly, stop using it immediately and use a Phillips screwdriver to unscrew the 4 screws on the bottom of the boat in a counterclockwise direction, gently separate the bottom of the boat from the surface of the boat, and use an electric hair dryer to dry the boat. Re-screw the screws on boat, then can use it.

CAUTION

- The toy boat itself uses 3.7V rechargeable lithium-ion batteries. The remote control uses two 1.5V AA batteries;
- Please pay attention to the polarity when installing or replacing batteries;
- Non-rechargeable batteries should not be charged;
- Adult supervision is required when charging rechargeable batteries;
- Rechargeable batteries should be removed from the toy before charging;
- Do not use old, new or different types of batteries;
- Remove exhausted batteries from the toy;
- The power terminals should not be short-circuited.
- This racing boat is equipped with strong power, when in high speed, please pay special attention when using the boat as it cannot be braked sharply due to inertia.

- When the speed of the boat slows down, it means that the power of the boat is not enough. Please recharge the boat to be charged as above.
- If the battery of the remote control is low, the racing boat can not be charged and the charging indicator is dimmed or does not light up, replace the batteries with new ones.
- Please recognize the charging plug and charging port when charging.
- When not in use for a long time, please remove the batteries in the remote control, turn the power switch of the rowing boat to "OFF" position.
- Be guided by an adult when unpacking.
- Retain this information for future reference.

FCC Warning

This device complies with part 15 of the FCC Rules. Operation is subject to the following two conditions: (1) This device may not cause harmful interference, and (2) this device must accept any interference received, including interference that may cause undesired operation.

Any Changes or modifications not expressly approved by the party responsible for compliance could void the user's authority to operate the equipment.

Note: This equipment has been tested and found to comply with the limits for a Class B digital device, pursuant to part 15 of the FCC Rules. These limits are designed to provide reasonable protection against harmful interference in a residential installation. This equipment generates uses and can radiate radio frequency energy and, if not installed and used in accordance with the instructions, may cause harmful interference to radio communications. However, there is no guarantee that interference will not occur in a particular installation. If this equipment does cause harmful interference to radio or television reception, which can be determined by turning the equipment off and on, the user is encouraged to try to correct the interference by one or more of the following measures:

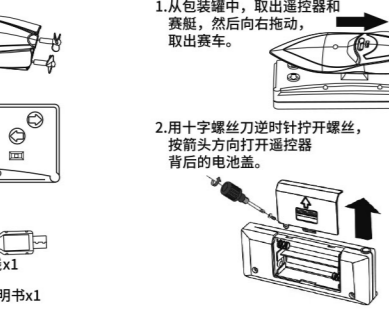
- Reorient or relocate the receiving antenna.
- Increase the separation between the equipment and receiver.
- Connect the equipment into an outlet on a circuit different from that to which the receiver is connected.
- Consult the dealer or an experienced radio/TV technician for help.

* RF warning for Portable device:
The device has been evaluated to meet general RF exposure requirement. The device can be used in portable exposure condition without restriction.



创新玩具
CREATE TOYS
ITEM NO.3329

套装内容

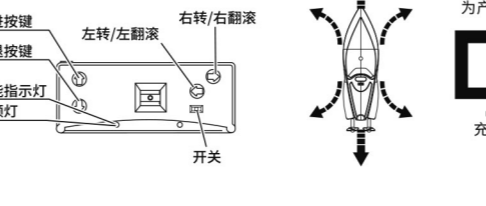


准备

- 1.从包装罐中,取出遥控器和赛艇,然后向右拖动,取出赛车。
- 2.用十字螺丝刀逆时针拧开螺丝,按箭头方向打开遥控器背后的电池盖。
- 3.按正确极性装入2粒"AA"电池,盖上电池盖,拧紧螺丝。

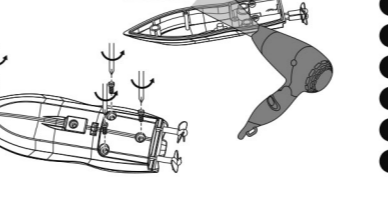
操作

注:船身没有开关
开是当触点接触到水的时候(如图1),关是当触点干了的时候(如图1、图2)。
1、使用时,先将赛艇放到水中,此时赛艇通电,指示灯闪烁。打开遥控器开关,船上指示灯常亮,表示对频成功。手不要放在螺旋桨附近,并确认螺旋桨周围没有障碍物,防止螺旋桨高速旋转时伤人。如果停止操作时,请将遥控器开关关闭,赛艇从水中拿出,并用布擦干遥控器上的水渍。(如图1,图2,当赛艇的两处接触点擦干,赛艇指示灯不亮,此时为断电状态。)



充电

- 1.USB充电电源线有两个终端。平方一端插入到船体的插座孔。如图所示。充电时灯亮,充电时灯灭。一个完整的充电周期大概需要15-20分钟。
- 2.确保充电安全,请使用配备的USB充电线为产品充电。



温馨提示

非正常操作,不小心让水进入船体内部,使船不能正常工作,请立即停止使用,用十字螺丝刀逆时针方向拧开船底上的4颗螺丝,轻轻把船底和船面分开,用电吹风吹干,装上螺丝便可正常使用。

注意

- 玩具船本身使用3.7V可充电锂电池,遥控器使用2节1.5V AA电池;
- 安装或更换电池时请注意极性;
- 非充电电池不可充电;
- 当给充电电池充电时,需要成人监护;
- 充电电池在充电前应从玩具中取出;
- 不可使用新旧或不同类型的电池;
- 从玩具内取出用尽的电池;
- 电源端子不应短路。

- 本赛船因配有强大动力,高速行驶时,由于惯性原因,不能急刹,请使用时特别注意。
- 当赛艇船速减慢时,说明船体电量不足。请将赛艇按以上方法充电即可。
- 如遥控器电池电量不足,赛车充不进电,充电指示灯变暗或不亮,更换新电池即可。
- 充电时请认准充电插头和充电接口。
- 长时间不使用时,请取出遥控器内的电池,并将赛艇的电源开关拨至"OFF"位置。
- 拆包装时在成人的指导下进行。
- 保留本资料以供日后参考。



创新玩具
CREATE TOYS
ITEM NO.3329

Top Racing Second Generation

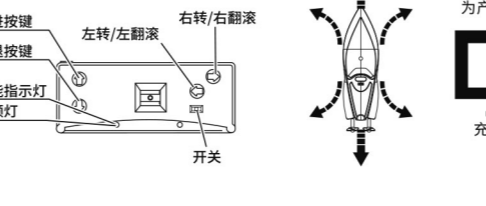


准备

- 1.从包装罐中,取出遥控器和赛艇,然后向右拖动,取出赛车。
- 2.用十字螺丝刀逆时针拧开螺丝,按箭头方向打开遥控器背后的电池盖。
- 3.按正确极性装入2粒"AA"电池,盖上电池盖,拧紧螺丝。

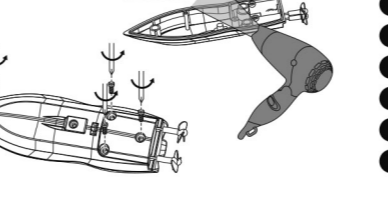
操作

注:船身没有开关
开是当触点接触到水的时候(如图1),关是当触点干了的时候(如图1、图2)。
1、使用时,先将赛艇放到水中,此时赛艇通电,指示灯闪烁。打开遥控器开关,船上指示灯常亮,表示对频成功。手不要放在螺旋桨附近,并确认螺旋桨周围没有障碍物,防止螺旋桨高速旋转时伤人。如果停止操作时,请将遥控器开关关闭,赛艇从水中拿出,并用布擦干遥控器上的水渍。(如图1,图2,当赛艇的两处接触点擦干,赛艇指示灯不亮,此时为断电状态。)



充电

- 1.USB充电电源线有两个终端。平方一端插入到船体的插座孔。如图所示。充电时灯亮,充电时灯灭。一个完整的充电周期大概需要15-20分钟。
- 2.确保充电安全,请使用配备的USB充电线为产品充电。



温馨提示

非正常操作,不小心让水进入船体内部,使船不能正常工作,请立即停止使用,用十字螺丝刀逆时针方向拧开船底上的4颗螺丝,轻轻把船底和船面分开,用电吹风吹干,装上螺丝便可正常使用。

注意

- 玩具船本身使用3.7V可充电锂电池,遥控器使用2节1.5V AA电池;
- 安装或更换电池时请注意极性;
- 非充电电池不可充电;
- 当给充电电池充电时,需要成人监护;
- 充电电池在充电前应从玩具中取出;
- 不可使用新旧或不同类型的电池;
- 从玩具内取出用尽的电池;
- 电源端子不应短路。

- 本赛船因配有强大动力,高速行驶时,由于惯性原因,不能急刹,请使用时特别注意。
- 当赛艇船速减慢时,说明船体电量不足。请将赛艇按以上方法充电即可。
- 如遥控器电池电量不足,赛车充不进电,充电指示灯变暗或不亮,更换新电池即可。
- 充电时请认准充电插头和充电接口。
- 长时间不使用时,请取出遥控器内的电池,并将赛艇的电源开关拨至"OFF"位置。
- 拆包装时在成人的指导下进行。
- 保留本资料以供日后参考。



用前详细阅读本使用说明书。好本说明书以备不时之用。