

VEVOR[®]

TOUGH TOOLS, HALF PRICE

Technical Support and E-Warranty Certificate www.vevor.com/support

Door Locksets

Instruction Manual

MODEL: 587+D101 、 3683+D101

We continue to be committed to provide you tools with competitive price.

"Save Half", "Half Price" or any other similar expressions used by us only represents an estimate of savings you might benefit from buying certain tools with us compared to the major top brands and does not necessarily mean to cover all categories of tools offered by us. You are kindly reminded to verify carefully when you are placing an order with us if you are actually saving half in comparison with the top major brands.

VEVOR[®]

TOUGH TOOLS, HALF PRICE

Door Locksets

MODEL: 587+D101



MODEL: 3683+D101



★ The picture is for reference only, please refer to the actual.

NEED HELP? CONTACT US!

Have product questions? Need technical support? Please feel free to contact us:

Technical Support and E-Warranty Certificate
www.vevor.com/support

This is the original instruction, please read all manual instructions carefully before operating. VEVOR reserves a clear interpretation of our user manual. The appearance of the product shall be subject to the product you received. Please forgive us that we won't inform you again if there are any technology or software updates on our product.



Warning-To reduce the risk of injury, user must read instructions manual carefully.

Installation tools

Tools Required for Replacement Installation

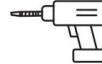


Phillips Screwdriver

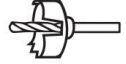
Extra Tools Required for New Installation



Measuring Tape



1" Hole Boring Bit

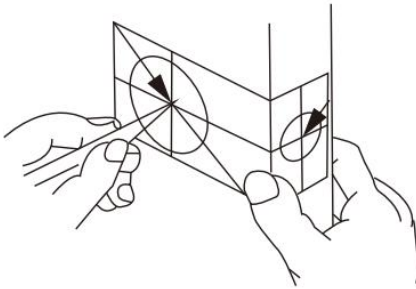


2 1/8" Hole Boring Saw

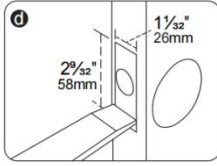
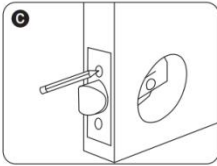
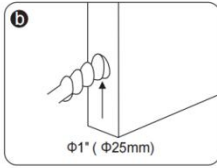
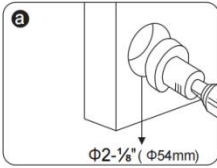
Additional tools(if needed): chisel, hammer, pencil, safety glasses.

Installation Instructions

(1) Drill Holes



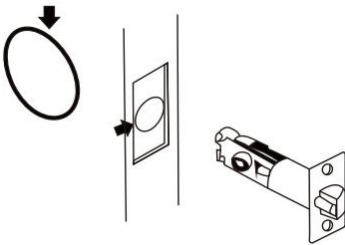
- a. Fold the template at the dotted line and tape the template to the interior side of the door at 34 to 48 inch Height.
 - b. Measure the thickness of the door and mark the middle point of the door thickness.
 - c. Mark the (60 or 70mm) hole center for the backset.
- Note:** Make sure the two dots are at the same height.



- a. Drill a Dia. (54mm) hole for the lock body.
- b. Drill a Dia. (25mm) hole for the latch.
- c. Insert the latch into the hole and mark the outline of the faceplate.
- d. Chisel a (3mm) deep hole for the faceplate.

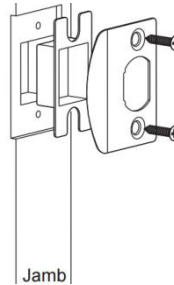
(2) Installation Instructions Of Ball Lockset Or Wave Shaped Lockset

1.Install the latch



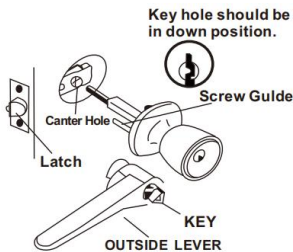
- 1.Install deadbolt latch in "up" position into door hole.
- 2.Insert and secure with screws.

2.Install Striking Plate



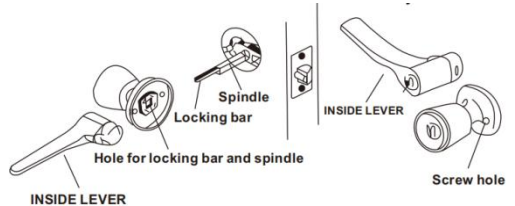
- Striking Plate against strike as illustrated, preventing forcing when door is closed.

3.Install Outside Knob Unit



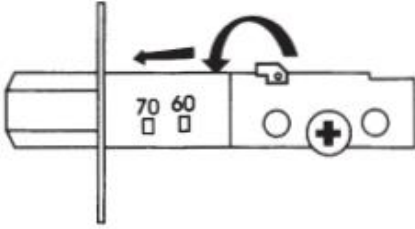
- Install outside knob unit with screw guides, locking bar and spindle engaged into latch as illustrated.

4. Install Inside Knob Unit.



- 1.Engage screw guides, locking bar and spindle into inside unit..
- 2.Insert screws and tighten securely.

(3) Installation Instructions Of Deadbolt Lockset

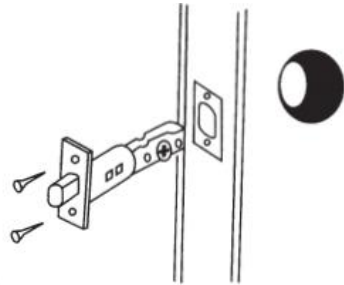


Your Latch is factory set for 2-3/8" (60mm) If your door requires a 2-3/4" (70mm) Latch, follow these steps.

A. Hold Latch in your right hand so you can see adjustment holes. With left hand turn latch plate in clockwise position. pull latch plate out of sase as far as it will go.

B. Turn back and lock into 70mm position

1. Install the latch

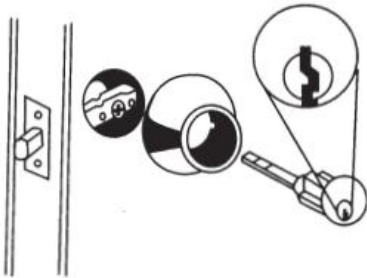


1. Install deadbolt latch

in "up" position into door hole.

2. Insert and secure with screws.

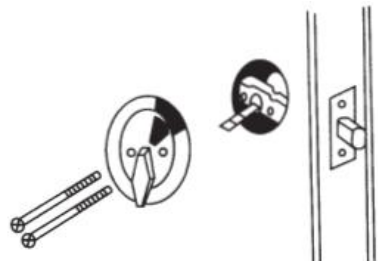
2. Install Exterior Assembly



1. Place cylinder assembly through outside cylinder guard and on door making sure torque blade is properly positioned in latch crank.

2. Put key in cylinder and turn until Deadbolt is exposed. Note: Keyhole must be in the "down" position as shown.

3. Install Interior Assembly



Make sure Deadbolt is in Locked position.

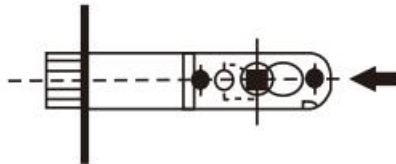
Place thumb turn assembly onto torque blade and line up screw holes. The thumb knob will be in the "up" position so you can see the screw holes. Tighten long machine screws

Note

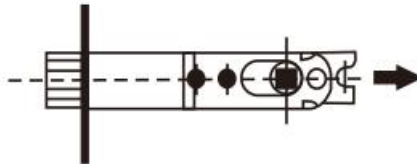
(1) Instructions For Adjustable Latch

For the adjustable latch, latch hole should be 1"(25mm)dia, and according to centers of drilled 2-1/8"(54mm)dia, lockset hole. For either 2-3/8"(60mm) or 2-3/4"(70mm) backset. The method of adjustment is illustrated below:

① The turning wheel is pushed fully to the left for 2-3/8"(60mm) backset.



② The turning wheel is pushed fully to the right for 2-3/4"(70mm) backset.



★ During the adjustment as above, Keeping two teeth of the turning wheel to forward first.

MAINTENANCE

1. Do not strike with force to avoid damage to the latch and door frame.
2. If there is dirt, use a dry cloth to remove, do not scrub with chemicals such as dishwashing liquid. Otherwise, it will destroy the protective film of exposed parts and cause fading.
3. Periodically (half a year or once a year) or when the key is not smoothly inserted and removed, graphite powder (pencil powder) can be added in the keyhole to lubricate.

Product Parameter

Model	587+D101	3683+D101
Product Form	Spherical handle	Wave shaped handle
Apply to Door Thickness	1-3/8 to 1-3/4	1-3/8 to 1-3/4
Colour	Silvery	Silvery
Material	SUS201、Kirsite、Brass	SUS201、Kirsite、Brass

Manufacturer: Shanghaimuxinmuyeyouxiangongsi

Address: Shuangchenglu 803nong11hao1602A-1609shi, baoshanqu, shanghai 200000 CN.

Imported to AUS: SIHAO PTY LTD. 1 ROKEVA STREETEASTWOOD NSW 2122 Australia

Imported to USA: Sanven Technology Ltd. Suite 250, 9166 Anaheim Place, Rancho Cucamonga, CA 91730

EC	REP
-----------	------------

E-CrossStu GmbH
Mainzer Landstr.69, 60329 Frankfurt am Main.

UK	REP
-----------	------------

YH CONSULTING LIMITED.
C/O YH Consulting Limited Office 147, Centurion House,
London Road, Staines-upon-Thames, Surrey, TW18 4AX

VEVOR[®]

TOUGH TOOLS, HALF PRICE

Technical Support and E-Warranty Certificate

www.vevor.com/support

VEVOR[®]

TOUGH TOOLS, HALF PRICE

Techniczny Wsparcie i certyfikat gwarancji elektronicznej www.vevor.com/support

Zestawy zamków do drzwi

Instrukcja obsługi

MODEL: 587+D101 、 3683+D101

We continue to be committed to provide you tools with competitive price.

"Save Half", "Half Price" or any other similar expressions used by us only represents an estimate of savings you might benefit from buying certain tools with us compared to the major top brands and does not necessarily mean to cover all categories of tools offered by us. You are kindly reminded to verify carefully when you are placing an order with us if you are actually saving half in comparison with the top major brands.

VEVOR[®]

TOUGH TOOLS, HALF PRICE

Door Locksets

MODELE: 587+D101 MODELE: 3683+D101



★ Zdjęcie ma charakter poglądowy, proszę odnieść się do stanu faktycznego.

NEED HELP? CONTACT US!

Have product questions? Need technical support? Please feel free to contact us:

Technical Support and E-Warranty Certificate
www.vevor.com/support

This is the original instruction, please read all manual instructions carefully before operating. VEVOR reserves a clear interpretation of our user manual. The appearance of the product shall be subject to the product you received. Please forgive us that we won't inform you again if there are any technology or software updates on our product.



Ostrzeżenie: Aby zminimalizować ryzyko obrażeń, użytkownik powinien uważnie przeczytać instrukcję obsługi.

Installation tools

Narzędzia wymagane do wymiany instalacji

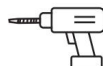


Śrubokręt krzyżakowy

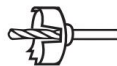
Dodatkowe narzędzia wymagane do nowej instalacji



Taśma miernicza



Wiertło wiertnicze 1 "

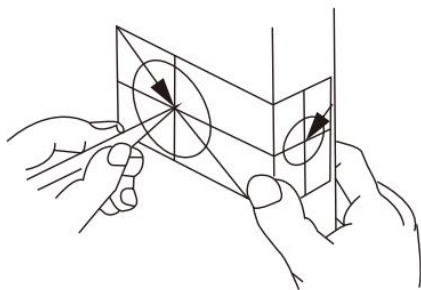


2 1/8" Hole Boring Saw

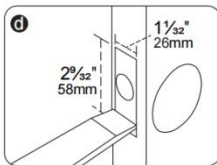
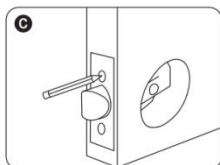
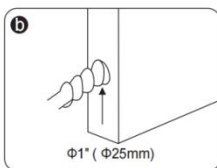
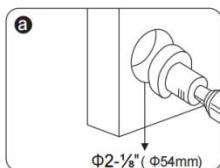
Dodatkowe narzędzia (jeśli potrzebne): dłuto, młotek, ołówek, okulary ochronne.

Installation Instructions

(1) Wywierć otwory



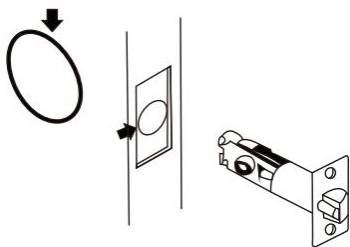
- Fold the template at the dotted line and tape the template to the interior side of the door at 34 to 48 inch Height.
 - Measure the thickness of the door and mark the middle point of the door thickness.
 - Mark the (60 or 70mm) hole center for the backset.
- Note:** Make sure the two dots are at the same height.



- Drill a Dia. (54mm) hole for the lock body.
- Drill a Dia. (25mm) hole for the latch.
- Insert the latch into the hole and mark the outline of the faceplate.
- Chisel a (3mm) deep hole for the faceplate.

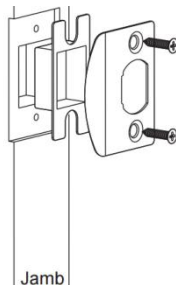
(2) Instalacja Instrukcje dotyczące zamka kulkowego lub zamka w kształcie fali

1. Zamontuj zatrzask



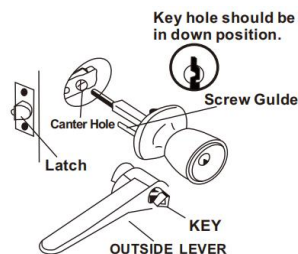
1. Zamontuj zasuwkę w pozycji „ górnej” do otworu w drzwiach.
2. Włóż i zabezpiecz za pomocą śruby.

2. Zamontuj płytkę uderzeniową



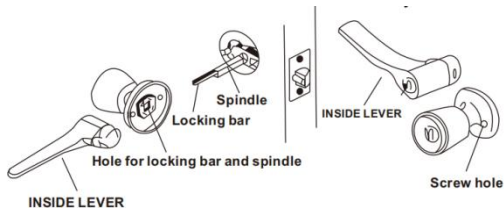
- Płytką zabezpieczającą przed uderzeniem, jak na ilustracji, zapobiegającą próbie wyważenia drzwi, gdy są zamknięte.

3. Zamontuj jednostkę pokrętła zewnętrznego



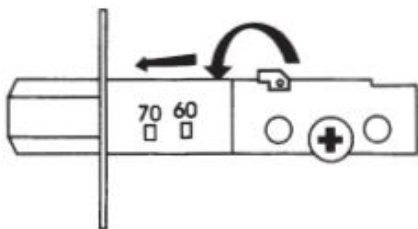
Zamontuj zewnętrzną jednostkę pokrętła za pomocą prowadnic śrub, pręta blokującego i trzpienia włożonego w zatrzask, jak pokazano na ilustracji.

4. Zamontuj jednostkę pokrętła wewnętrznego .



1. Wsuń prowadnicę śrub, pręt blokujący i wrzeczono do jednostki wewnętrznej .
2. Włóż śruby i mocno je dokręć .

3) Instalacja Instrukcja obsługi zamka Zestaw zamków

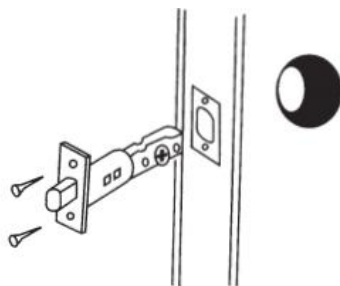


Twój zatrask jest fabrycznie ustawiony na 2-3/8" (60 mm). Jeśli Twoje drzwi wymagają 2-3/4" (70mm) Zatrask, wykonaj następujące kroki.

A. Trzymaj Zatrask po prawej stronie ręką tak widać otwory regulacyjne. Z zamek skrętu w lewo płytkę w pozycji zgodnej z ruchem wskazówek zegara. Wyciągnij płytkę zatraskową w miarę możliwości to pójdzie.

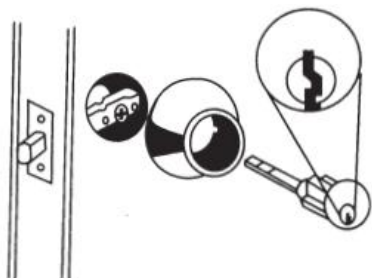
B. Odwróć się i zablokuj w 70mm pozycja

1. Zainstaluj zatrask



1. Zamontuj zasuwkę w pozycji „ górnej” do otworu w drzwiach.
2. Włóż i zabezpiecz za pomocą śruby.

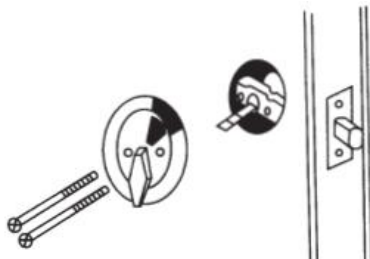
2. Montaż zespołu zewnętrznego



1. Miejsce zespół cylindra przez zewnętrzną osłonę cylindra i na drzwiach, upewniając się, że ostrze momentu obrotowego jest prawidłowo ustawione w korbie zamka.

2. Włóż klucz do cylindra i przekręć, aż rygiel będzie odsłonięty. Uwaga: Dziurka od klucza musi być w pozycji „

3. Montaż zespołu wewnętrznego



Sprawdź, czy zamek zasuwkowy jest w pozycji zablokowanej. Umieść zespół pokrętła na ostrzu momentu obrotowego i wyrównaj otwory na śruby. Pokrętło będzie w pozycji „górną” , dzięki czemu będziesz mógł zobaczyć otwory na śruby. Dokręć długie śruby maszynowe.

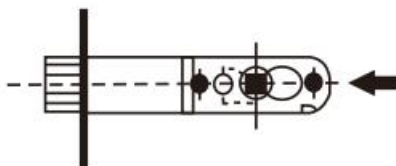
w dół ” , jak pokazano.

Note

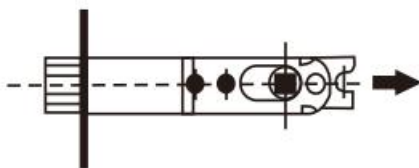
(1) Instrukcja dotycząca regulowanego zatrzasku

W przypadku regulowanego zatrzasku otwór zatrzasku powinien mieć średnicę 1"(25mm) i zgodnie z wywierconymi środkami 2-1/8"(54mm) otwór zamka. Do odsadzenia 2-3/8"(60mm) lub 2-3/4"(70mm). Poniżej przedstawiono metodę regulacji:

① Koło obrotowe należy przesunąć maksymalnie w lewo, aby uzyskać cofnięcie o 2-3/8" (60 mm).



② Koło obrotowe należy przesunąć maksymalnie w prawo, aby uzyskać odsunięcie 2-3/4" (70 mm).



★ Podczas regulacji jak powyżej, najpierw ustaw dwa zęby koła obrotowego do przodu.

MAINTENANCE

1. Nie uderzaj z dużą siłą, aby uniknąć uszkodzenia zatrzasku i ościeżnicy.
2. Jeśli jest brud, usuń go suchą szmatką, nie szoruj środkami chemicznymi,

takimi jak płyn do mycia naczyń. W przeciwnym razie zniszczy to warstwę ochronną odsłoniętych części i spowoduje blaknięcie.

3. Okresowo (co pół roku lub raz na rok) lub gdy wkładanie i wyjmowanie klucza nie przebiega płynnie, do zamka można dodać proszek grafitowy (proszek ołówkowy) w celu nasmarowania.

Product Parameter

Model	587+D101	3683+D101
Formularz produktu	Uchwyt kulisty	Uchwyt w kształcie fali
Zastosuj do grubości drzwi	1-3/8 do 1-3/4	1-3/8 do 1-3/4
Kolor	Srebrzysty	Srebrzysty
Tworzywo	SUS201, Kirsyt, Mosiądz	SUS201, Kirsyt, Mosiądz

Producent: Shanghaimuxinmuyeyouxiangongsi

Adres: Shuangchenglu 803nong11hao1602A-1609shi, baoshanqu, szanghaj 200000 CN.

Importowane do AUS: SIHAO PTY LTD. 1 ROKEVA STREETEASTWOOD NSW 2122 Australia

Importowane do USA: Sanven Technology Ltd. Suite 250, 9166 Anaheim Place, Rancho Cucamonga, CA 91730

EC	REP
-----------	------------

E-CrossStu GmbH
Mainzer Landstr.69, 60329 Frankfurt am Main.

UK	REP
-----------	------------

YH CONSULTING LIMITED.
C/O YH Consulting Limited Office 147, Centurion House,
London Road, Staines upon Thames, Surrey, TW18 4AX

VEVOR[®]

TOUGH TOOLS, HALF PRICE

Techniczny Wsparcie i certyfikat e-gwarancji

www.vevor.com/support

VEVOR[®]

TOUGH TOOLS, HALF PRICE

Technisch Support und E-Garantie-Zertifikat www.vevor.com/support

Türschloss-Sets

Bedienungsanleitung

MODELL: 587+D101 、 3683+D101

We continue to be committed to provide you tools with competitive price.

"Save Half", "Half Price" or any other similar expressions used by us only represents an estimate of savings you might benefit from buying certain tools with us compared to the major top brands and does not necessarily mean to cover all categories of tools offered by us. You are kindly reminded to verify carefully when you are placing an order with us if you are actually saving half in comparison with the top major brands.

VEVOR®

TOUGH TOOLS, HALF PRICE

Door Locksets

MODELL: 587+D101 MODELL: 3683+D101



★ Das Bild dient nur als Referenz. Bitte beachten Sie das tatsächliche Bild.

NEED HELP? CONTACT US!

Have product questions? Need technical support? Please feel free to contact us:

Technical Support and E-Warranty Certificate
www.vevor.com/support

This is the original instruction, please read all manual instructions carefully before operating. VEVOR reserves a clear interpretation of our user manual. The appearance of the product shall be subject to the product you received. Please forgive us that we won't inform you again if there are any technology or software updates on our product.



Warnung: Um das Verletzungsrisiko zu verringern, muss der Benutzer die Bedienungsanleitung sorgfältig lesen.

Installation tools

Für die Ersatzinstallation erforderliche
Werkzeuge

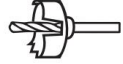
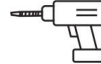


Kreuzschlitzschraubendreher

Für die Neuinstallation sind zusätzlich
Werkzeuge erforderlich



Maßband 1" Lochbohrer

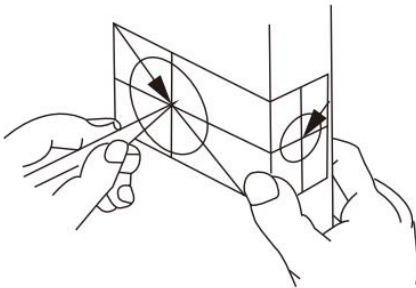


2 1/8" Hole
Boring Saw

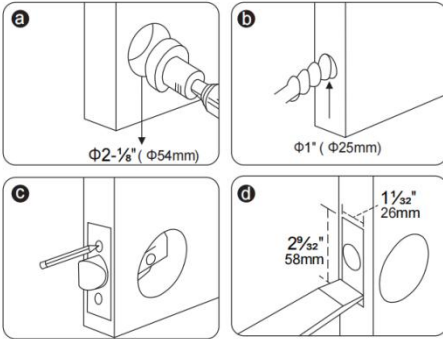
Zusätzliche Werkzeuge (falls erforderlich): Meißel,
Hammer, Bleistift, Schutzbrille.

Installation Instructions

(1) Löcher bohren



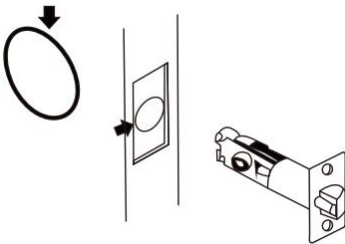
- Fold the template at the dotted line and tape the template to the interior side of the door at 34 to 48 inch Height.
 - Measure the thickness of the door and mark the middle point of the door thickness.
 - Mark the (60 or 70mm) hole center for the backset.
- Note:** Make sure the two dots are at the same height.



- a. Drill a Dia. (54mm) hole for the lock body.
- b. Drill a Dia. (25mm) hole for the latch.
- c. Insert the latch into the hole and mark the outline of the faceplate.
- d. Chisel a (3mm) deep hole for the faceplate.

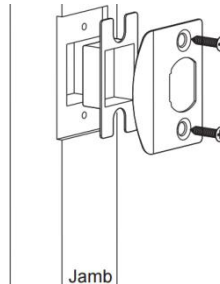
(2) Installation Anleitung für Kugelschloss oder wellenförmiges Schloss

1. Installieren Sie den Riegel



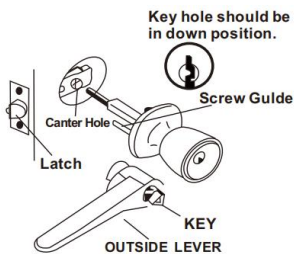
1. Riegelriegel installieren in "oben" Position ins Türloch.
2. Einstecken und sichern mit Schrauben.

2. Schließblech installieren



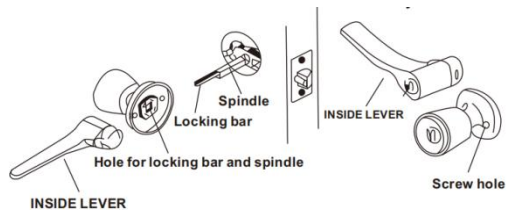
- Schließblech gegen Türöffner wie abgebildet, verhindert Aufbrechen bei geschlossener Tür.

3. Außenknaufeinheit installieren



- Installieren Sie die äußere Knaufeinheit mit Schraubenführungen,

4. Installieren Sie die innere Knöpfeinheit.

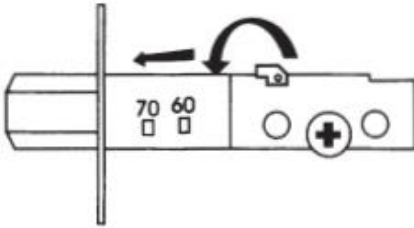


1. Schraubenführungen, Verriegelungsstange und Spindel in die Inneneinheit einrasten lassen.

Verriegelungsstange und Spindel, die wie abgebildet in den Riegel einrastet.

2. Schrauben einsetzen und gut festziehen .

(3) Installation Anleitung für Deadbolt Schlosssatz

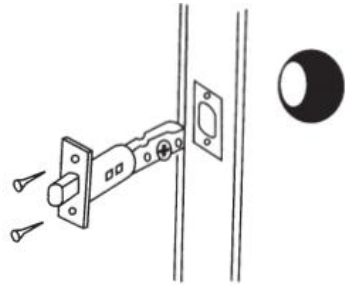


Ihr Riegel ist werkseitig auf 2-3/8" (60mm) eingestellt. Wenn Ihre Tür einen 2-3/4" benötigt (70 mm) Latch, befolgen Sie diese Schritte.

A. Halten Riegel rechts einrasten Hand so Sie können Einstelllöcher sehen. Mit Verriegelung mit Linksdrehung Platte im Uhrzeigersinn drehen . Riegelplatte herausziehen von sase soweit es wird gehen.

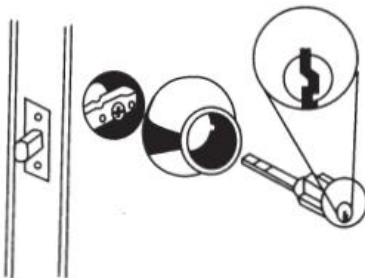
B. Kehren Sie um und Einrasten in 70mm Position

1. Installieren Sie den Riegel



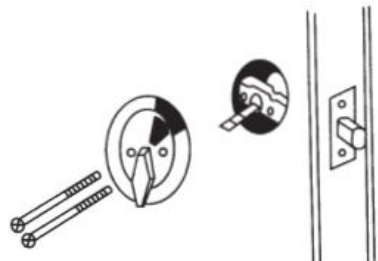
1. Riegelriegel installieren in "oben" Position ins Türloch.
2. Einstecken und sichern mit Schrauben.

2. Außenbaugruppe installieren



1. Platz Führen Sie die Zylinderbaugruppe durch den äußeren Zylinderschutz und an der Tür und

3. Innenbaugruppe installieren



Stellen Sie sicher, dass sich der Riegel in der verriegelten Position befindet.

Platzieren Sie die

stellen Sie sicher, dass das Drehmomentblatt richtig in der Verriegelungskurbel positioniert ist.
2. Stecken Sie den Schlüssel in den Zylinder und drehen Sie ihn, bis der Riegel freiliegt. Hinweis: Das Schlüsselloch muss sich wie gezeigt in der Position „unten“ befinden .

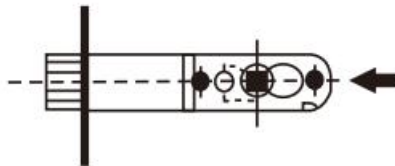
Daumendrehvorrichtung auf dem Drehmomentblatt und richten Sie die Schraubenlöcher aus. Der Daumenknopf befindet sich in der Position „oben“, sodass Sie die Schraubenlöcher sehen können. Ziehen Sie lange Maschinenschrauben fest .

Note

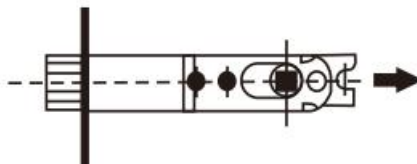
(1) Anleitung für verstellbaren Riegel

Für den verstellbaren Riegel sollte das Riegelloch einen Durchmesser von 1" (25 mm) haben und das Schlossloch sollte entsprechend der Mittenbohrung 2-1/8" (54 mm) Durchmesser haben. Für entweder 2-3/8" (60 mm) oder 2-3/4" (70 mm) Dornmaß. Die Einstellmethode ist unten dargestellt:

① Das Drehrad wird für einen Rücksprung von 2-3/8 Zoll (60 mm) ganz nach links gedrückt.



② Das Drehrad wird für einen Dornabstand von 2-3/4 Zoll (70 mm) ganz nach rechts gedrückt.



★ Halten Sie bei der Einstellung wie oben beschrieben zunächst zwei Zähne des Drehrads nach vorne.

MAINTENANCE

1. Schlagen Sie nicht mit Gewalt zu, um Schäden am Riegel und Türrahmen zu vermeiden.
2. Entfernen Sie Schmutz mit einem trockenen Tuch. Verwenden Sie zum Schrubben keine Chemikalien wie Spülmittel. Andernfalls wird der Schutzfilm freiliegender Teile zerstört und es kommt zum Verblässen.
3. In regelmäßigen Abständen (halbjährlich oder einmal jährlich) oder wenn sich der Schlüssel nicht reibungslos einstecken oder herausziehen lässt, kann zur Schmierung Graphitpulver (Bleistiftpulver) in das Schlüsselloch gegeben werden.

Product Parameter

Modell	587+D101	3683+D101
Produktform	Kugelförmiger Griff	Wellenförmiger Griff
Auf Türstärke anwenden	1-3/8 bis 1-3/4	1-3/8 bis 1-3/4
Farbe	Silbrig	Silbrig
Material	SUS201, Kirsite, Messing	SUS201, Kirsite, Messing

Hersteller: Shanghaimuxinmuyeyouxiangongsi

Adresse: Shuangchenglu 803nong11hao1602A-1609shi, baoshanqu, Shanghai 200000 CN.

Nach AUS importiert: SIHAO PTY LTD. 1 ROKEVA STREETEASTWOOD NSW

2122 Australien

Importiert in die USA: Sanven Technology Ltd. Suite 250, 9166 Anaheim Place,
Rancho Cucamonga, CA 91730

EC	REP
-----------	------------

E-CrossStu GmbH
Mainzer Landstr.69, 60329 Frankfurt am Main.

UK	REP
-----------	------------

YH CONSULTING LIMITED.
C/O YH Consulting Limited Office 147, Centurion House,
London Road, Staines-upon-Thames, Surrey, TW18 4AX

VEVOR[®]

TOUGH TOOLS, HALF PRICE

Technisch Support und E-Garantie-Zertifikat

www.vevor.com/support

VEVOR[®]

TOUGH TOOLS, HALF PRICE

Technique Certificat d'assistance et de garantie électronique

www.vevor.com/support

Serrures de porte

Manuel d'instructions

MODÈLE: 587+D101 、 3683+D101

We continue to be committed to provide you tools with competitive price.

"Save Half", "Half Price" or any other similar expressions used by us only represents an estimate of savings you might benefit from buying certain tools with us compared to the major top brands and does not necessarily mean to cover all categories of tools offered by us. You are kindly reminded to verify carefully when you are placing an order with us if you are actually saving half in comparison with the top major brands.

VEVOR[®]

TOUGH TOOLS, HALF PRICE

Door Locksets

MODÈLE : 587+D101 MODÈLE : 3683+D101



★ L'image est à titre de référence uniquement, veuillez vous référer à la réalité.

NEED HELP? CONTACT US!

Have product questions? Need technical support? Please feel free to contact us:

Technical Support and E-Warranty Certificate
www.vevor.com/support

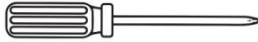
This is the original instruction, please read all manual instructions carefully before operating. VEVOR reserves a clear interpretation of our user manual. The appearance of the product shall be subject to the product you received. Please forgive us that we won't inform you again if there are any technology or software updates on our product.



Avertissement - Pour réduire le risque de blessure, l'utilisateur doit lire attentivement le manuel d'instructions.

Installation tools

Outils requis pour l'installation du remplacement

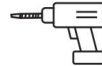


Tournevis cruciforme

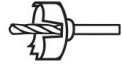
Outils supplémentaires requis pour une nouvelle installation



Mètre à ruban



Foret à aléser de 1 po

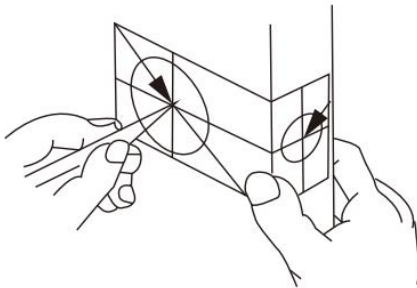


2 1/8" Hole Boring Saw

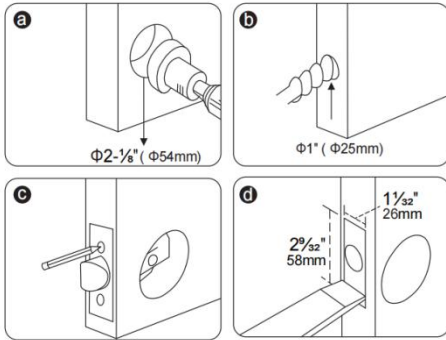
Outils supplémentaires (si nécessaire) : ciseau, marteau, crayon, lunettes de sécurité.

Installation Instructions

(1) Percer des trous



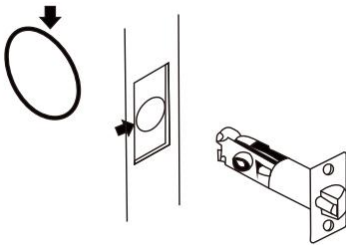
- a. Fold the template at the dotted line and tape the template to the interior side of the door at 34 to 48 inch Height.
 - b. Measure the thickness of the door and mark the middle point of the door thickness.
 - c. Mark the (60 or 70mm) hole center for the backset.
- Note: Make sure the two dots are at the same height.**



- a. Drill a Dia. (54mm) hole for the lock body.
- b. Drill a Dia. (25mm) hole for the latch.
- c. Insert the latch into the hole and mark the outline of the faceplate.
- d. Chisel a (3mm) deep hole for the faceplate.

(2) Installation Instructions pour serrure à bille ou serrure à forme ondulée

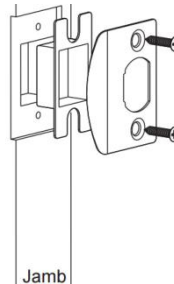
1.Installez le loquet



1.Installer le loquet à pêne dormant en position "haute" dans le trou de la porte.

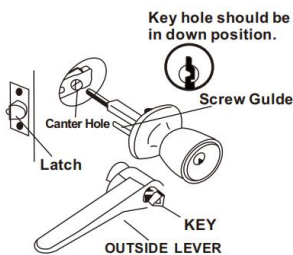
2.Insérez et fixez avec vis.

2.Installer la gâche



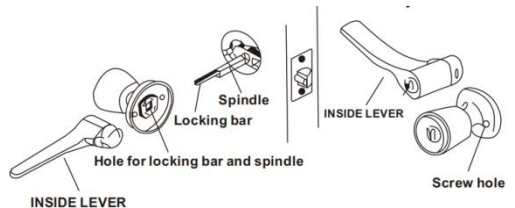
Gâche contre gâche comme illustré, empêchant le forçage lorsque la porte est fermée.

3.Installer l'unité de bouton extérieur



Installez l'unité de bouton extérieur avec les guides à vis, la barre de

4. Installer l'unité de bouton intérieure .

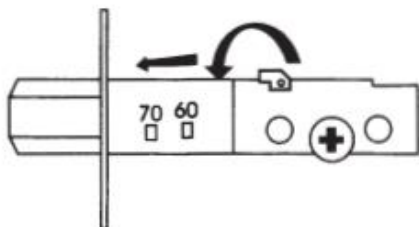


1. Engagez les guides à vis, la barre de verrouillage et la broche dans l'unité intérieure .

verrouillage et la broche engagées dans le loquet comme illustré.

2. Insérez les vis et serrez fermement .

3) Installation Instructions pour le pêne dormant Serrure

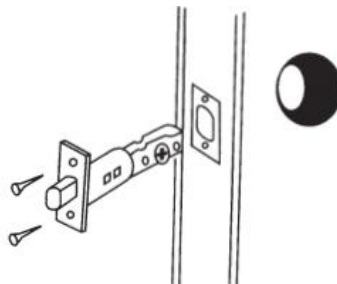


Votre loquet est réglé en usine pour 2-3/8" (60 mm) Si votre porte nécessite un 2-3/4" (70 mm) Loquet, suivez ces étapes.

A. Tenir Accrochez-vous à votre droite main donc vous pouvez voir les trous de réglage. Avec loquet tournant à gauche plaque en position dans le sens des aiguilles d'une montre. Retirez la plaque de verrouillage de sase dans la mesure où ça ira.

B. Retournez-vous et verrouiller en 70 mm position

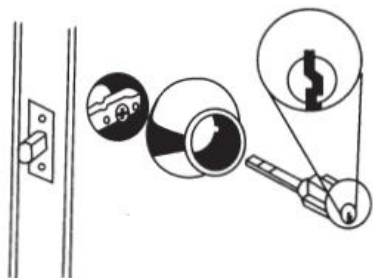
1. Installez le loquet



1. Installer le loquet à pêne dormant en position "haute" dans le trou de la porte.

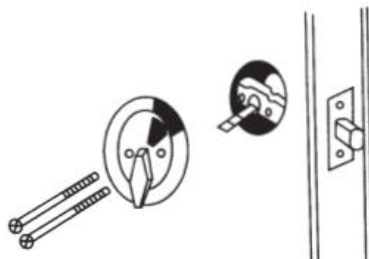
2. Insérez et fixez avec vis.

2. Installer l'assemblage extérieur



1. Lieu assemblage du cylindre à travers la protection extérieure du cylindre et sur la porte en s'assurant que la lame de couple est correctement

3. Installer l'assemblage intérieur



Assurez-vous que le pêne dormant est en position verrouillée.

Placez l'assemblage du bouton rotatif sur la lame de couple et alignez les trous de vis. Le bouton

positionnée dans la manivelle du loquet.

2. Placez la clé dans le cylindre et tournez-la jusqu'à ce que le pêne dormant soit exposé. Remarque : le trou de serrure doit être en position « abaissé » comme indiqué.

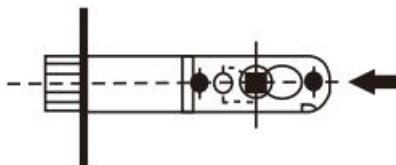
rotatif sera en position « haute » pour que vous puissiez voir les trous de vis. Serrez les longues vis de la machine.

Note

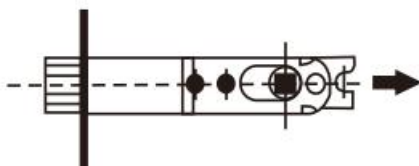
(1) Instructions pour le loquet réglable

Pour le loquet réglable, le trou du loquet doit avoir un diamètre de 25 mm (1 po) et être conforme aux centres des trous de serrure percés de 54 mm (2-1/8 po) de diamètre. Pour un écartement de 60 mm (2-3/8 po) ou de 70 mm (2-3/4 po). La méthode de réglage est illustrée ci-dessous :

① La molette rotative est poussée complètement vers la gauche pour un écartement de 2-3/8" (60 mm).



② La molette de rotation est poussée complètement vers la droite pour un écartement de 2-3/4" (70 mm).



★ Lors du réglage comme ci-dessus, gardez d'abord les deux dents de la roue tournante vers l'avant.

MAINTENANCE

1. Ne frappez pas avec force pour éviter d'endommager le loquet et le cadre de la porte.
2. S'il y a de la saleté, utilisez un chiffon sec pour l'enlever, ne frottez pas avec des produits chimiques tels que du liquide vaisselle. Sinon, cela détruirait le film protecteur des parties exposées et provoquerait une décoloration.
3. Périodiquement (tous les six mois ou une fois par an) ou lorsque la clé n'est pas insérée et retirée en douceur, de la poudre de graphite (poudre de crayon) peut être ajoutée dans le trou de serrure pour lubrifier.

Product Parameter

Modèle	587+D101	3683+D101
Fiche produit	Poignée sphérique	Poignée en forme de vague
Appliquer à l'épaisseur de la porte	1-3/8 à 1-3/4	1-3/8 à 1-3/4
Couleur	Argenté	Argenté
Matériel	SUS201, Kirsite, Laiton	SUS201, Kirsite, Laiton

Fabricant : Shanghai muxinmuyeyouxiangongsi

Adresse : Shuangchenglu 803nong11hao1602A-1609shi, baoshanqu, shanghai 200000 CN.

Importé en Australie : SIHAO PTY LTD. 1 ROKEVA STREETEASTWOOD NSW
2122 Australie

Importé aux États-Unis : Sanven Technology Ltd. Suite 250, 9166 Anaheim
Place, Rancho Cucamonga, CA 91730

EC	REP
-----------	------------

E-CrossStu GmbH
Mainzer Landstr.69, 60329 Frankfurt am Main.

UK	REP
-----------	------------

YH CONSULTING LIMITED.
C/O YH Consulting Limited Office 147, Centurion House,
London Road, Staines-upon-Thames, Surrey, TW18 4AX

VEVOR[®]

TOUGH TOOLS, HALF PRICE

Technique Certificat d'assistance et de garantie électronique

www.vevor.com/support

VEVOR[®]

TOUGH TOOLS, HALF PRICE

Technisch Ondersteuning en E-garantiecertificaat www.vevor.com/support

Deurslotensets

Gebbruiksaanwijzing

MODEL: 587+D101 , 3683+D101

We continue to be committed to provide you tools with competitive price.

"Save Half", "Half Price" or any other similar expressions used by us only represents an estimate of savings you might benefit from buying certain tools with us compared to the major top brands and does not necessarily mean to cover all categories of tools offered by us. You are kindly reminded to verify carefully when you are placing an order with us if you are actually saving half in comparison with the top major brands.

VEVOR[®]

TOUGH TOOLS, HALF PRICE

Door Locksets

MODEL: 587+D101 MODEL: 3683+D101



★ De afbeelding is alleen ter referentie, raadpleeg de werkelijke versie.

NEED HELP? CONTACT US!

Have product questions? Need technical support? Please feel free to contact us:

Technical Support and E-Warranty Certificate
www.vevor.com/support

This is the original instruction, please read all manual instructions carefully before operating. VEVOR reserves a clear interpretation of our user manual. The appearance of the product shall be subject to the product you received. Please forgive us that we won't inform you again if there are any technology or software updates on our product.



Waarschuwing: om het risico op letsel te verkleinen, moet de gebruiker de gebruiksaanwijzing zorgvuldig lezen.

Installation tools

Benodigde gereedschappen voor vervangingsinstallatie

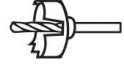
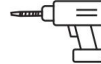


Kruiskopschroevendraaier

Extra gereedschap vereist voor nieuwe installatie



Meetlint 1" Gatboor

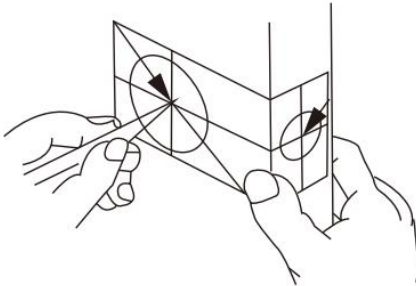


2 1/8" Hole
Boring Saw

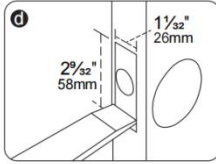
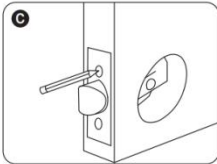
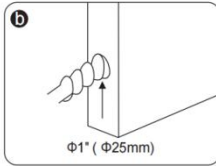
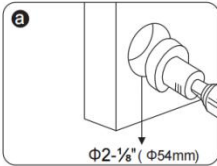
Extra gereedschap (indien nodig): beitels, hamer, potlood, veiligheidsbril.

Installation Instructions

(1) Boorgaten



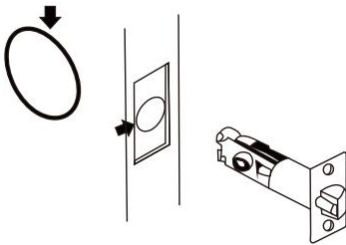
- Fold the template at the dotted line and tape the template to the interior side of the door at 34 to 48 inch Height.
 - Measure the thickness of the door and mark the middle point of the door thickness.
 - Mark the (60 or 70mm) hole center for the backset.
- Note:** Make sure the two dots are at the same height.



- a. Drill a Dia. (54mm) hole for the lock body.
- b. Drill a Dia. (25mm) hole for the latch.
- c. Insert the latch into the hole and mark the outline of the faceplate.
- d. Chisel a (3mm) deep hole for the faceplate.

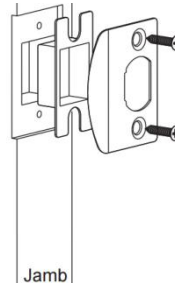
(2) Installatie Instructies voor een kogelvormig slot of een golfvormig slot

1. Installeer de grendel



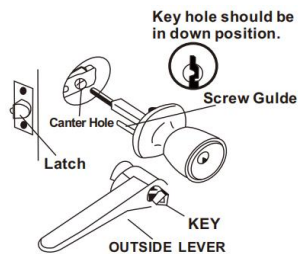
1. Installeer de nachtschoot in de "omhoog"positie in het deurgat.
2. Plaats en bevestig met schroeven.

2. Sluitplaat installeren



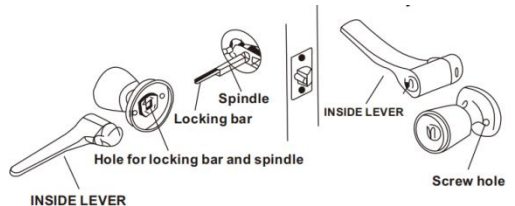
- Sluitplaat tegen de sluitplaat zoals afgebeeld, voorkomt forceren wanneer de deur gesloten is.

3. Installeer de buitenknopeenheid



- Monteer de buitenknopeenheid met de schroefgeleiders, de vergrendelingsstang en de spindel

4. Installeer de binnenknopeenheid .

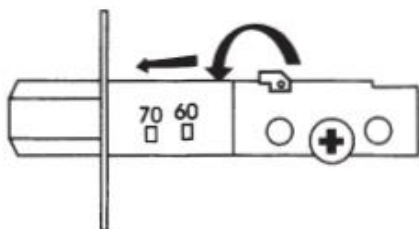


1. Plaats de schroefgeleiders, de vergrendelingsstang en de spindel in de binnenunit .
2. Plaats de schroeven en draai ze

in de grendel zoals afgebeeld.

stevig vast .

3) Installatie Instructies voor de nachtschoot Slotset

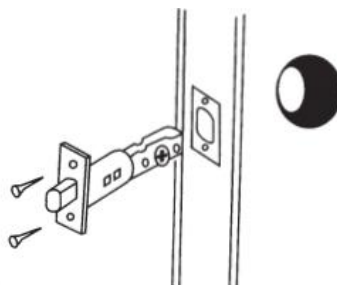


Uw grendel is in de fabriek ingesteld op 2-3/8" (60 mm). Als uw deur een 2-3/4"-grendel nodig heeft, (70mm) Latch, volg deze stappen.

A. Houd Vergrendeling in uw rechterhand dus je kunt de afstelgaten zien. Met linksdraaiende grendel plaat in de richting van de klok . Trek de vergrendelingsplaat eruit. van sase voor zover het zal gaan.

B. Draai je om en vergrendelen in 70mm positie

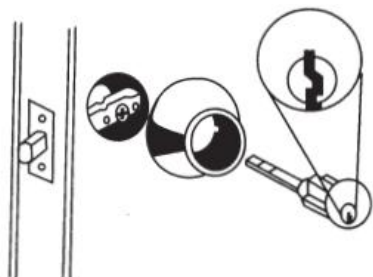
1. Installeer de grendel



1. Installeer de nachtschoot in de "omhoog"positie in het deurgat.

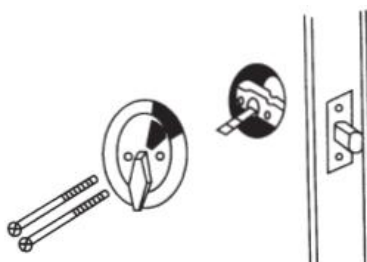
2. Plaats en bevestig met schroeven.

2. Buitenmontage installeren



1. Plaats cilindermontage via de buitenste cilinderbescherming en op de deur. Zorg ervoor dat het torsieblad correct in de vergrendelingskruk is geplaatst.

3. Interieurmontage installeren



Zorg ervoor dat de nachtschoot in de vergrendelde stand staat.

Plaats de duimdraai-eenheid op het torsieblad en lijn de schroefgaten uit. De duimknop staat in de "omhoog" positie, zodat u de

2. Steek de sleutel in de cilinder en draai totdat de nachtschoot zichtbaar is. Let op: het sleutelgat moet in de "omlaag"-positie staan, zoals afgebeeld.

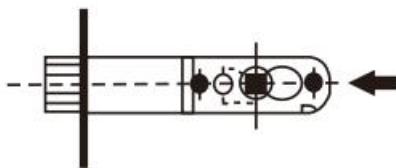
schroefgaten kunt zien. Draai de lange machineschroeven vast

Note

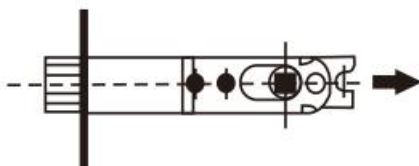
(1) Instructies voor een verstelbare vergrendeling

Voor de verstelbare grendel moet het grendelgat 1"(25mm)dia zijn, en volgens de middelpunten van de geboorde 2-1/8"(54mm)dia, slotgat. Voor 2-3/8"(60mm) of 2-3/4"(70mm) backset. De aanpassingsmethode wordt hieronder geïllustreerd:

① Druk het draaiwiel volledig naar links voor een doornmaat van 2-3/8"(60mm).



② Het draaiwiel wordt volledig naar rechts gedruwd voor een doornmaat van 2-3/4"(70 mm).



★ Houd tijdens de bovenstaande afstelling de twee tanden van het draaiwiel eerst naar voren.

MAINTENANCE

1. Sla niet met geweld om schade aan de grendel en het deurkozijn te voorkomen.
2. Als er vuil is, gebruik dan een droge doek om het te verwijderen, schrob niet met chemicaliën zoals afwasmiddel. Anders zal het de beschermende film van blootgestelde delen vernietigen en vervaging veroorzaken.
3. Periodiek (een half jaar of eens per jaar) of wanneer de sleutel niet soepel in en uit het slot gaat, kan er grafietpoeder (potloodpoeder) in het sleutelgat worden gedaan om het te smeren.

Product Parameter

Model	587+D101	3683+D101
Productformulier	Bolvormige handgreep	Golvende handgreep
Toepassen op deurdikte	1-3/8 tot 1-3/4	1-3/8 tot 1-3/4
Kleur	Zilverachtig	Zilverachtig
Materiaal	SUS201, Kirsite, Messing	SUS201, Kirsite, Messing

Fabrikant: Shanghai muxinmuyeyouxiangongsi

Adres: Shuangchenglu 803nong11hao1602A-1609shi, baoshanqu, shanghai 200000 CN.

Geïmporteerd naar AUS: SIHAO PTY LTD. 1 ROKEVA STREET EASTWOOD NSW 2122 Australië

Geïmporteerd naar de VS: Sanven Technology Ltd. Suite 250, 9166 Anaheim Place, Rancho Cucamonga, CA 91730



E-CrossStu GmbH
Mainzer Landstr.69, 60329 Frankfurt am Main.



YH CONSULTING LIMITED.

C/O YH Consulting Limited Office 147, Centurion House,
London Road, Staines-upon-Thames, Surrey, TW18 4AX

VEVOR[®]

TOUGH TOOLS, HALF PRICE

Technisch Ondersteuning en E-garantiecertificaat

www.vevor.com/support

VEVOR[®]

TOUGH TOOLS, HALF PRICE

Técnico Soporte y certificado de garantía electrónica www.vevor.com/support

Cerraduras de puertas

Manual de instrucciones

MODELO: 587+D101 、 3683+D101

We continue to be committed to provide you tools with competitive price.

"Save Half", "Half Price" or any other similar expressions used by us only represents an estimate of savings you might benefit from buying certain tools with us compared to the major top brands and does not necessarily mean to cover all categories of tools offered by us. You are kindly reminded to verify carefully when you are placing an order with us if you are actually saving half in comparison with the top major brands.

VEVOR[®]

TOUGH TOOLS, HALF PRICE

Door Locksets

MODELO: 587+D101 MODELO: 3683+D101



★ La imagen es solo de referencia, consulte la real.

NEED HELP? CONTACT US!

Have product questions? Need technical support? Please feel free to contact us:

Technical Support and E-Warranty Certificate
www.vevor.com/support

This is the original instruction, please read all manual instructions carefully before operating. VEVOR reserves a clear interpretation of our user manual. The appearance of the product shall be subject to the product you received. Please forgive us that we won't inform you again if there are any technology or software updates on our product.



Advertencia: Para reducir el riesgo de lesiones, el usuario debe leer atentamente el manual de instrucciones.

Installation tools

Herramientas necesarias para la instalación de reemplazo

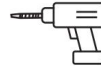


Destornillador Phillips

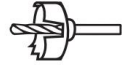
Herramientas adicionales necesarias para una nueva instalación



Cinta métrica



Broca para perforar agujeros $\frac{3}{4}$ " Hole

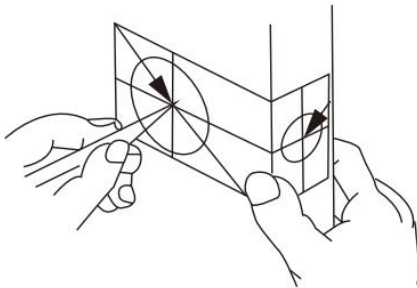


Boring Saw

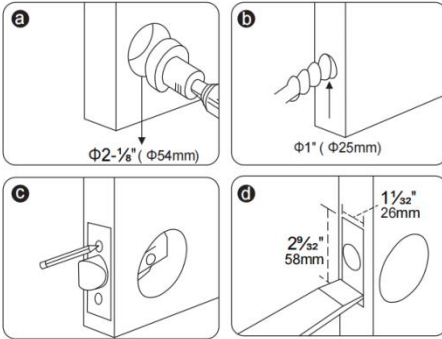
Herramientas adicionales (si es necesario): cincel, martillo, lápiz, gafas de seguridad.

Installation Instructions

(1) Perforar agujeros



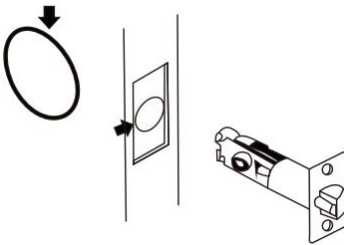
- Fold the template at the dotted line and tape the template to the interior side of the door at 34 to 48 inch Height.
 - Measure the thickness of the door and mark the middle point of the door thickness.
 - Mark the (60 or 70mm) hole center for the backset.
- Note:** Make sure the two dots are at the same height.



- a. Drill a Dia. (54mm) hole for the lock body.
- b. Drill a Dia. (25mm) hole for the latch.
- c. Insert the latch into the hole and mark the outline of the faceplate.
- d. Chisel a (3mm) deep hole for the faceplate.

(2) Instalación Instrucciones de cerradura de bola o cerradura en forma de onda

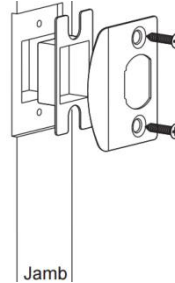
1. Instale el pestillo



1. Instale el pestillo del cerrojo en posición "arriba" En el agujero de la puerta.

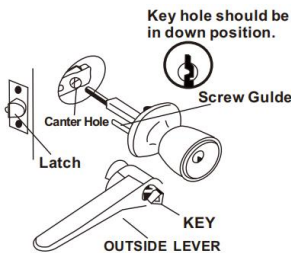
2. Insertar y asegurar con tornillos.

2. Instalar la placa de impacto



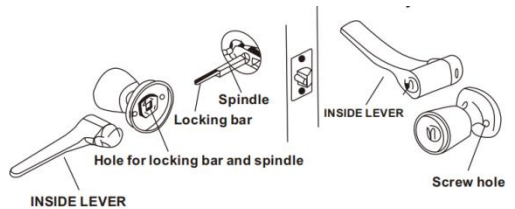
Placa de impacto contra cerradero como se ilustra, evitando forzar la puerta cuando está cerrada.

3. Instale la unidad de perilla exterior



Instale la unidad de perilla exterior con guías de tornillos, barra de

4. Instalar la unidad de perilla interior .



1. Encaje las guías de tornillo, la barra de bloqueo y el husillo en la unidad interior .

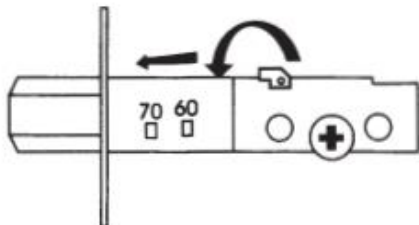
2. Inserte los tornillos y apriételos

bloqueo y eje enganchados en el pestillo como se ilustra.

firmemente .

3) Instalación Instrucciones del cerrojo

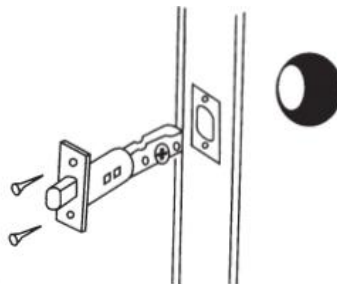
Juego de cerradura



Su pestillo está configurado de fábrica para 2-3/8" (60 mm). Si su puerta requiere un 2-3/4" (70 mm) Pestillo, siga estos pasos.

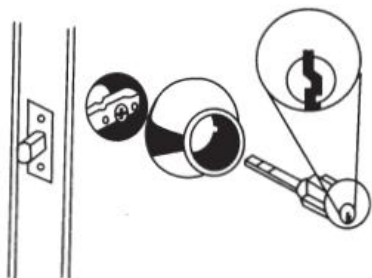
A. Mantener Enganche su pestillo derecho mano así Puedes ver los agujeros de ajuste. pestillo giratorio a la izquierda Placa en posición en el sentido de las agujas del reloj. Tire de la placa del pestillo hacia afuera . por supuesto en cuanto a se ira
B. Date la vuelta y bloquear en 70 mm posición

1. Instale el pestillo



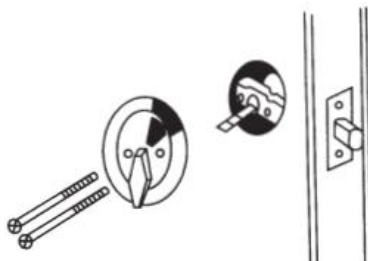
1. Instale el pestillo del cerrojo en posición "arriba" En el agujero de la puerta.
2. Insertar y asegurar con tornillos.

2. Instalación del conjunto exterior



1. Lugar Ensamblaje del cilindro a través de la protección exterior del cilindro y en la puerta, asegurándose de que la cuchilla de torsión esté colocada

3. Instalación del conjunto interior



- Asegúrese de que el cerrojo esté en la posición bloqueada.
Coloque el conjunto giratorio sobre la cuchilla de torsión y alinee los orificios de los tornillos. La

correctamente en la manivela del pestillo.

2. Coloque la llave en el cilindro y gírela hasta que el cerrojo quede expuesto.

Nota: La cerradura debe estar en la posición "abajo", como se muestra .

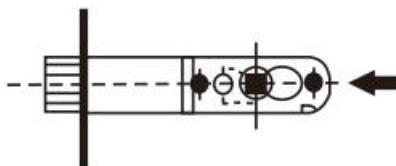
perilla del pulgar estará en la posición "arriba" para que pueda ver los orificios de los tornillos. Apriete los tornillos largos para máquina.

Note

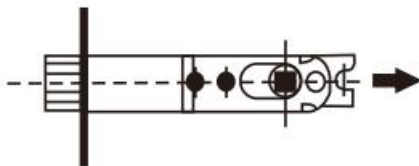
(1) Instrucciones para el pestillo ajustable

Para el pestillo ajustable, el orificio del pestillo debe tener un diámetro de 1" (25 mm) y, de acuerdo con los centros de los orificios perforados para la cerradura, un diámetro de 2-1/8" (54 mm). Para un retroceso de 2-3/8" (60 mm) o 2-3/4" (70 mm). El método de ajuste se ilustra a continuación:

① La rueda giratoria se empuja completamente hacia la izquierda para lograr un retroceso de 2-3/8" (60 mm).



② La rueda giratoria se empuja completamente hacia la derecha para lograr un retroceso de 2-3/4" (70 mm).



★ Durante el ajuste como se indica arriba, mantenga los dos dientes de la rueda giratoria hacia adelante primero.

MAINTENANCE

1. No golpee con fuerza para evitar dañar el pestillo y el marco de la puerta.
2. Si hay suciedad, utilice un paño seco para eliminarla, no frote con productos químicos como el lavavajillas, ya que se destruirá la película protectora de las partes expuestas y se decolorará.
3. Periódicamente (semestre o una vez al año) o cuando la llave no se inserta y se retira con suavidad, se puede agregar polvo de grafito (polvo de lápiz) en el ojo de la cerradura para lubricar.

Product Parameter

Modelo	587+D101	3683+D101
Forma del producto	Mango esférico	Mango en forma de onda
Aplicar al espesor de la puerta	1-3/8 a 1-3/4	1-3/8 a 1-3/4
Color	Plateado	Plateado
Material	SUS201, Kirsite, latón	SUS201, Kirsite, latón

Fabricante: Shanghaimuxinmuyeyouxiangongsi

Dirección: Shuangchenglu 803nong11hao1602A-1609shi, baoshanqu, shanghai 200000 CN.

Importado a AUS: SIHAO PTY LTD. 1 ROKEVA STREETEASTWOOD NSW 2122 Australia

Importado a EE. UU.: Sanven Technology Ltd. Suite 250, 9166 Anaheim Place,

Rancho Cucamonga, CA 91730

EC	REP
-----------	------------

E-CrossStu GmbH
Mainzer Landstr.69, 60329 Frankfurt am Main.

UK	REP
-----------	------------

YH CONSULTING LIMITED.
C/O YH Consulting Limited Office 147, Centurion House,
London Road, Staines-upon-Thames, Surrey, TW18 4AX

VEVOR[®]

TOUGH TOOLS, HALF PRICE

Técnico Certificado de soporte y garantía electrónica

www.vevor.com/support

VEVOR[®]

TOUGH TOOLS, HALF PRICE

Teknisk Support och e-garanticertifikat www.vevor.com/support

Dörrlås

Instruktionsmanual

MODELL: 587+D101 、 3683+D101

We continue to be committed to provide you tools with competitive price.

"Save Half", "Half Price" or any other similar expressions used by us only represents an estimate of savings you might benefit from buying certain tools with us compared to the major top brands and does not necessarily mean to cover all categories of tools offered by us. You are kindly reminded to verify carefully when you are placing an order with us if you are actually saving half in comparison with the top major brands.

VEVOR[®]

TOUGH TOOLS, HALF PRICE

Door Locksets

MODELL: 587+D101 MODELL: 3683+D101



★ Bilden är endast för referens, se den faktiska.

NEED HELP? CONTACT US!

Have product questions? Need technical support? Please feel free to contact us:

Technical Support and E-Warranty Certificate
www.vevor.com/support

This is the original instruction, please read all manual instructions carefully before operating. VEVOR reserves a clear interpretation of our user manual. The appearance of the product shall be subject to the product you received. Please forgive us that we won't inform you again if there are any technology or software updates on our product.



Varning - För att minska risken för skada måste användaren läsa instruktionerna noggrant.

Installation tools

Verktyg som krävs för ersättningsinstallation

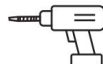


Phillips skruvmejsel

Extra verktyg som krävs för nyinstallation



Måttband 1" hålbörbit

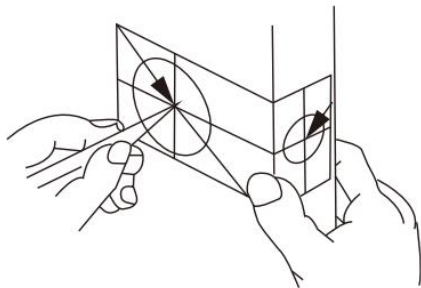


2 1/8" Hole Boring Saw

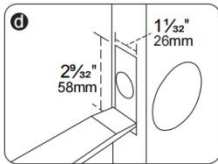
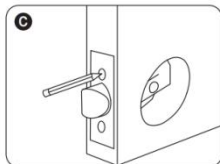
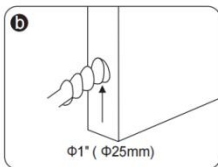
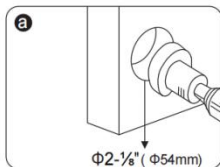
Ytterligare verktyg (om det behövs): mejsel, hammare, penna, skyddsglasögon.

Installation Instructions

(1) Borra hål



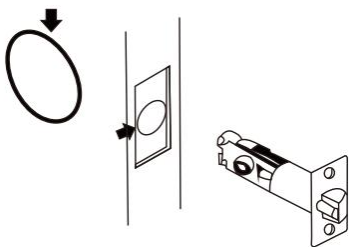
- Fold the template at the dotted line and tape the template to the interior side of the door at 34 to 48 inch Height.
 - Measure the thickness of the door and mark the middle point of the door thickness.
 - Mark the (60 or 70mm) hole center for the backset.
- Note:** Make sure the two dots are at the same height.



- Drill a Dia. (54mm) hole for the lock body.
- Drill a Dia. (25mm) hole for the latch.
- Insert the latch into the hole and mark the outline of the faceplate.
- Chisel a (3mm) deep hole for the faceplate.

(2) Installation Instruktioner för kullåset eller vågformat låset

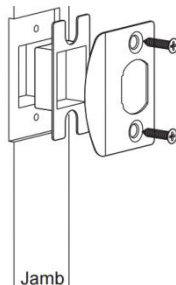
1. Installera spärren



1. Installera bultlåset i "upp" läge in i dörrehålet.

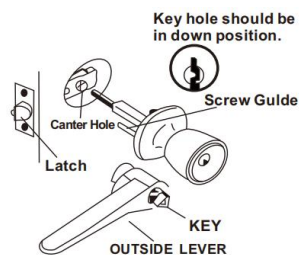
2. Sätt i och säkra med skruvar.

2. Installera slagplattan



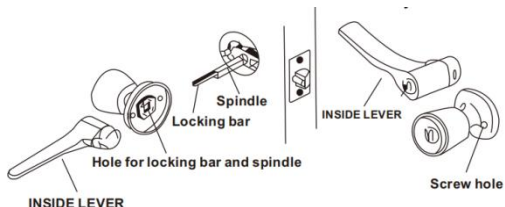
Slagplatta mot slag enligt bilden, förhindrar forcering när dörren är stängd.

3. Installera den yttre vredenheten



Installera utvändig knoppenhet med skruvstyrningar, låsstång och spindel i ingrepp med spärren enligt bilden.

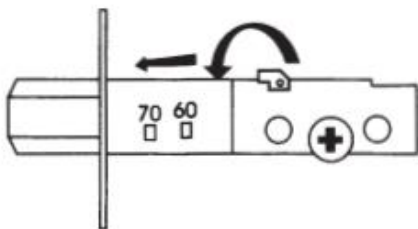
4. Installera insidan av vredenheten .



1. Sätt i skruvstyrningar, låsstång och spindel i insidan av enheten. .

2. Sätt i skruvarna och dra åt ordentligt .

(3) Installation Instruktioner för D eadbolt Låset

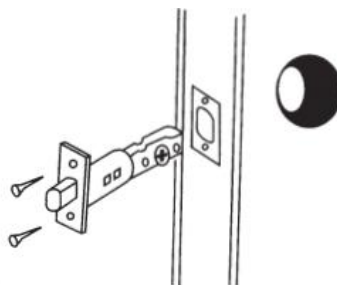


Din spärr är fabriksinställd för 2-3/8" (60 mm) om din dörr kräver en 2-3/4" (70 mm) Spärr, följ dessa steg.

A. Håll Spärr i din högra sida hand så du kan se justeringshål. Med vänster vrid spärren plåt i medurs läge . dra ut spärrplåten av sase så långt som det kommer att gå.

B. Vänd tillbaka och lås i 70 mm placera

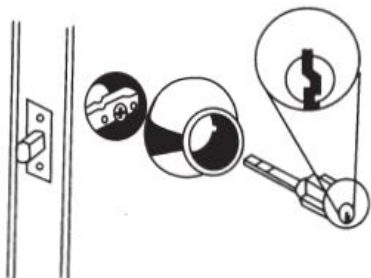
1. Installera spärren



1. Installera bultlåset i "upp" läge in i dörrhålet.

2. Sätt i och säkra med skruvar.

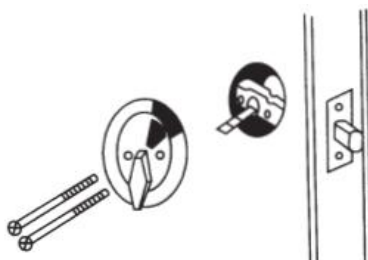
2. Installera den yttre enheten



1. Plats cylindermontering genom det yttre cylinderskyddet och på dörren och se till att vridmomentbladet är korrekt placerat i spärrveven.

2. Sätt i nyckeln i cylindern och vrid tills Deadbolt är exponerad. Obs: Nyckelhålet måste vara i läge "nedåt n" enligt bilden.

3. Installera den inre delen



Se till att Deadbolt är i låst läge.

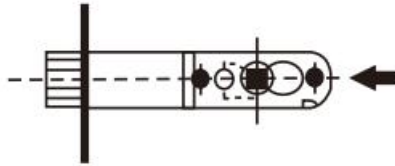
Placera tumsvängningsenheten på vridmomentbladet och rikta in skruvhålen. Tumvredet kommer att vara i "upp"-läget så att du kan se skruvhålen. Dra åt långa maskinskravar

Note

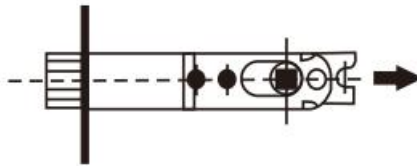
(1) Instruktioner F eller A justerbar L atch

För den justerbara spärren ska spärrhålet vara 1" (25 mm) dia, och enligt mitten av borrarat 2-1/8" (54 mm) dia, låsset hål. För antingen 2-3/8"(60mm) eller 2-3/4"(70mm) bakstycke. Justeringsmetoden illustreras nedan:

① Det vridande hjulet skjuts helt åt vänster för 2-3/8" (60 mm) backset.



② Det vridande hjulet skjuts helt åt höger för 2-3/4" (70 mm) backset.



★ Under justeringen enligt ovan, Håll två tänder på det vridande hjulet framåt först.

MAINTENANCE

1. Slå inte till med våld för att undvika skador på spärren och dörrkarmen.
2. Om det finns smuts, använd en torr trasa för att ta bort, skrubba inte med kemikalier som diskmedel. Annars kommer det att förstöra skyddsfilmerna på utsatta delar och orsaka blekning.
3. Med jämna mellanrum (ett halvår eller en gång om året) eller när nyckeln inte är smidigt insatt och borttagen, kan grafitpulver (pennpulver) tillsättas i nyckelhålet för att smörja.

Product Parameter

Modell	587+D101	3683+D101
Produktform	Sfäriskt handtag	Vågformat handtag
Applicera på Dörrtjocklek	1-3/8 till 1-3/4	1-3/8 till 1-3/4
Färg	Silverren	Silverren
Material	SUS201、Kirsite、Mässing	SUS201、Kirsite、Mässing

Tillverkare: Shanghaimuxinmuyeyouxiangongsi

Adress: Shuangchenglu 803nong11hao1602A-1609shi, baoshanqu, shanghai 200000 CN.

Importerad till AUS: SIHAO PTY LTD. 1 ROKEVA STREETEASTWOOD NSW 2122 Australien

Importerad till USA: Sanven Technology Ltd. Suite 250, 9166 Anaheim Place, Rancho Cucamonga, CA 91730



E-CrossStu GmbH
Mainzer Landstr.69, 60329 Frankfurt am Main.



YH CONSULTING LIMITED.
C/O YH Consulting Limited Office 147, Centurion House,
London Road, Staines-upon-Thames, Surrey, TW18 4AX

VEVOR[®]

TOUGH TOOLS, HALF PRICE

Teknisk Support och e-garanticertifikat

www.vevor.com/support

VEVOR[®]

TOUGH TOOLS, HALF PRICE

Tecnico Supporto e certificato di garanzia elettronica www.vevor.com/support

Serrature per porte

Manuale di istruzioni

MODELLO: 587+D101 、 3683+D101

We continue to be committed to provide you tools with competitive price.

"Save Half", "Half Price" or any other similar expressions used by us only represents an estimate of savings you might benefit from buying certain tools with us compared to the major top brands and does not necessarily mean to cover all categories of tools offered by us. You are kindly reminded to verify carefully when you are placing an order with us if you are actually saving half in comparison with the top major brands.

VEVOR[®]

TOUGH TOOLS, HALF PRICE

Door Locksets

MODELLO: 587+D101 MODELLO: 3683+D101



★ L'immagine è solo a scopo illustrativo, fare riferimento alla realtà.

NEED HELP? CONTACT US!

Have product questions? Need technical support? Please feel free to contact us:

Technical Support and E-Warranty Certificate
www.vevor.com/support

This is the original instruction, please read all manual instructions carefully before operating. VEVOR reserves a clear interpretation of our user manual. The appearance of the product shall be subject to the product you received. Please forgive us that we won't inform you again if there are any technology or software updates on our product.



Attenzione: per ridurre il rischio di lesioni, l'utente deve leggere attentamente il manuale di istruzioni.

Installation tools

Strumenti necessari per l'installazione della sostituzione

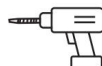


Cacciavite a croce

Strumenti extra necessari per la nuova installazione



Nastro di misurazione



Punta per foratura da 2 1/8" Hole

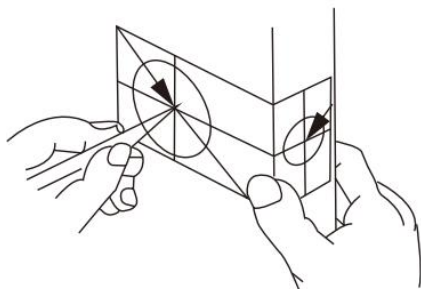


Boring Saw

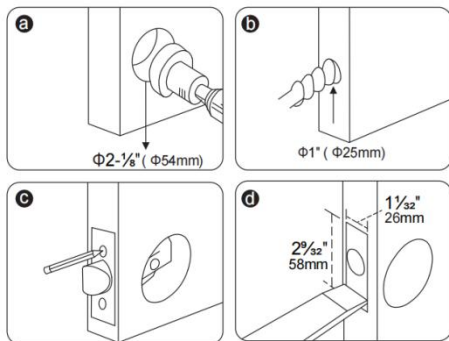
Strumenti aggiuntivi (se necessari): scalpello, martello, matita, occhiali protettivi.

Installation Instructions

(1) Forare i fori



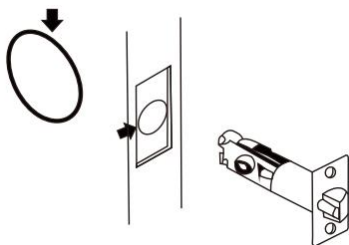
- Fold the template at the dotted line and tape the template to the interior side of the door at 34 to 48 inch Height.
 - Measure the thickness of the door and mark the middle point of the door thickness.
 - Mark the (60 or 70mm) hole center for the backset.
- Note:** Make sure the two dots are at the same height.



- a. Drill a Dia. (54mm) hole for the lock body.
- b. Drill a Dia. (25mm) hole for the latch.
- c. Insert the latch into the hole and mark the outline of the faceplate.
- d. Chisel a (3mm) deep hole for the faceplate.

(2) Installazione Istruzioni per il set di serrature a sfera o a forma di onda

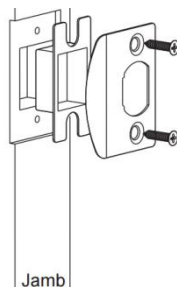
1. Installare il fermo



1. Installare il chiavistello a catenaccio in posizione "su" nel foro della porta.

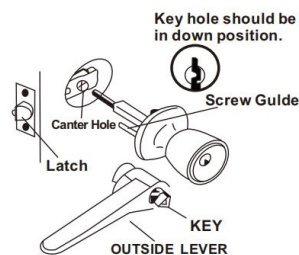
2. Inserire e fissare con viti.

2. Installare la piastra di battuta



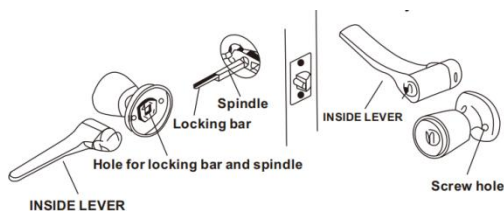
Piastra di battuta contro lo sfondamento come illustrato, impedendo lo sfondamento quando la porta è chiusa.

3. Installare l'unità manopola esterna



Installare l'unità pomello esterno con le guide per le viti, la barra di

4. Installare l'unità manopola interna .

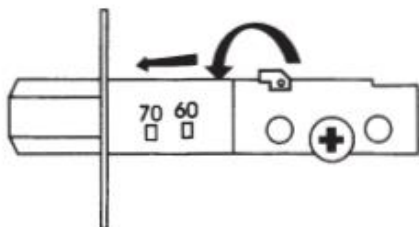


1. Inserire le guide delle viti, la barra di bloccaggio e il mandrino nell'unità interna .

2. Inserire le viti e serrare saldamente .

bloccaggio e il perno inseriti nel fermo come illustrato.

3) Installazione Istruzioni per il catenaccio Serratura

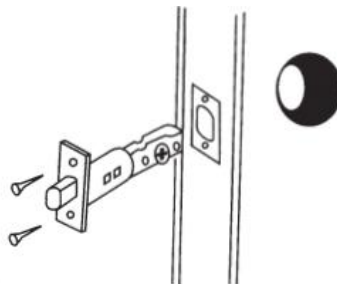


Il tuo fermo è impostato in fabbrica per 2-3/8" (60 mm) Se la tua porta richiede un 2-3/4" (70mm) Latch, segui questi passaggi.

A. Tenere premuto Agganciati alla tua destra mano così puoi vedere i fori di regolazione. Con chiavistello a sinistra piastra in posizione oraria. Tirare fuori la piastra di chiusura di sase per quanto riguarda andrà.

B. Torna indietro e bloccare in 70mm posizione

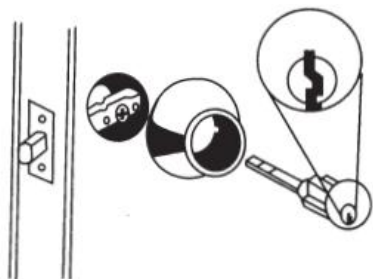
1. Installare il fermo



1. Installare il chiavistello a catenaccio in posizione "su" nel foro della porta.

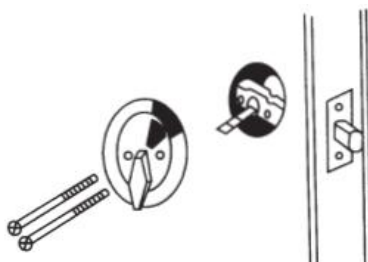
2. Inserire e fissare con viti.

2. Installare l'assemblaggio esterno



1. Luogo gruppo cilindro attraverso la protezione esterna del cilindro e sulla porta, assicurandosi che la lama di coppia sia posizionata correttamente

3. Installare l'assemblaggio interno



Assicurarsi che il catenaccio sia in posizione di blocco.

Posizionare il gruppo pomello girevole sulla lama di coppia e allineare i fori delle viti. La

nella manovella del fermo.

2. Inserire la chiave nel cilindro e girare finché il catenaccio non è esposto.

Nota: il foro della serratura deve essere in posizione "giù" come mostrato.

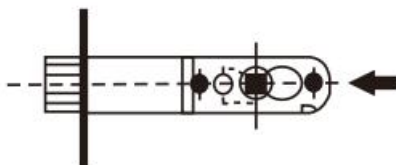
manopola girevole sarà in posizione "su" in modo da poter vedere i fori delle viti. Stringere le viti lunghe della macchina

Note

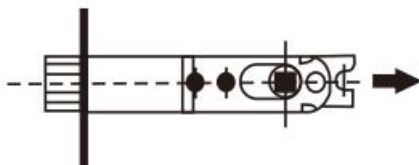
(1) Istruzioni per il fermo regolabile

Per il chiavistello regolabile, il foro del chiavistello deve essere di 1"(25mm) di diametro e, in base ai centri del foro di bloccaggio forato di 2-1/8"(54mm) di diametro. Per un backset di 2-3/8"(60mm) o 2-3/4"(70mm). Il metodo di regolazione è illustrato di seguito:

① Per un'entrata di 2-3/8" (60 mm), la rotella girevole viene spinta completamente verso sinistra.



② Per un'entrata di 2-3/4" (70 mm), la rotella girevole viene spinta completamente verso destra.



★ Durante la regolazione come sopra, tenere prima in avanti due denti della ruota girevole.

MAINTENANCE

1. Non colpire con forza per evitare di danneggiare il chiavistello e il telaio della porta.
2. Se c'è sporcizia, usare un panno asciutto per rimuoverla, non strofinare con prodotti chimici come il detersivo per i piatti. Altrimenti, distruggerà la pellicola protettiva delle parti esposte e causerà lo scolorimento.
3. Periodicamente (ogni sei mesi o una volta all'anno) o quando la chiave non viene inserita e rimossa agevolmente, è possibile aggiungere polvere di grafite (polvere di matita) nella serratura per lubrificarla.

Product Parameter

Modello	587+D101	3683+D101
Forma del prodotto	Manico sferico	Maniglia a forma di onda
Applicare allo spessore della porta	Da 1-3/8 a 1-3/4	Da 1-3/8 a 1-3/4
Colore	Argenteo	Argenteo
Materiale	SUS201、Kirsite、Ottone	SUS201, Kirsite, Ottone

Produttore: Shanghaimuxinmuyeyouxiangongsi

Indirizzo: Shuangchenglu 803nong11hao1602A-1609shi, baoshanqu, shanghai 200000 CN.

Importato in AUS: SIHAO PTY LTD. 1 ROKEVA STRETEASTWOOD NSW 2122 Australia

Importato negli USA: Sanven Technology Ltd. Suite 250, 9166 Anaheim Place,

Rancho Cucamonga, CA 91730

EC	REP
-----------	------------

E-CrossStu GmbH
Mainzer Landstr.69, 60329 Frankfurt am Main.

UK	REP
-----------	------------

YH CONSULTING LIMITED.
C/O YH Consulting Limited Office 147, Centurion House,
London Road, Staines-upon-Thames, Surrey, TW18 4AX

VEVOR[®]

TOUGH TOOLS, HALF PRICE

Tecnico Supporto e certificato di garanzia elettronica

www.vevor.com/support