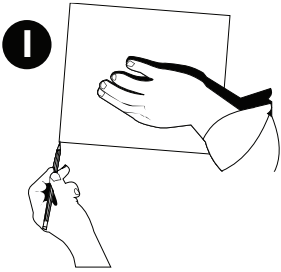
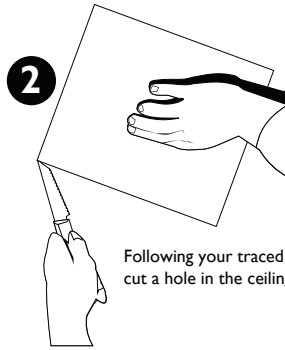


FXA SERIES INSTALLATION

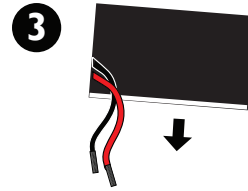


After determining the speaker location, mark a cut-out area on the ceiling/wall as following:

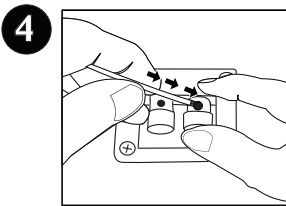
- FXA550S: 12 1/8" x 12 1/8" (308mm x 308mm)
- FXAQ550S: 12 1/8" x 12 1/8" (308mm x 308mm)



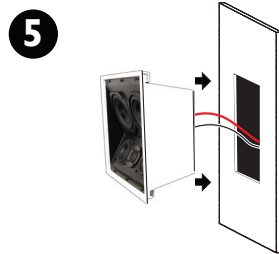
Following your traced lines, cut a hole in the ceiling/wall.



Locate the wire in the ceiling/wall and strip the wire ends 1/2".

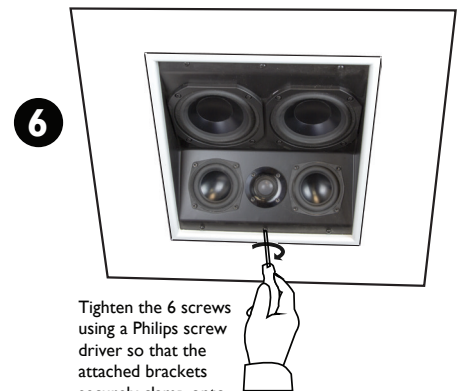


Connect the speaker wire to the speaker terminals observing the correct polarity.

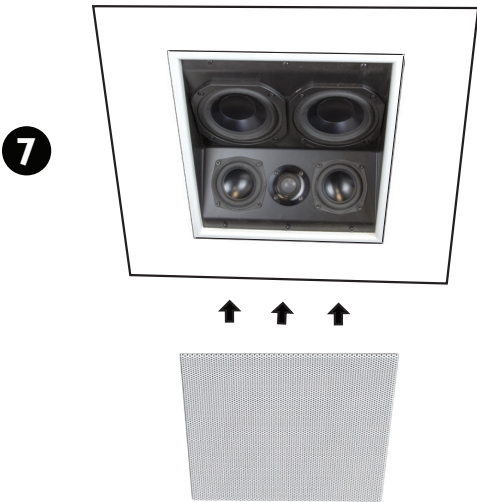


Install the speaker by making sure that the brackets are at the end of the screws.

Place the speaker assembly in the wall by angling the brackets towards the center to clear the ceiling/wall material and inserting speaker straight into the cut hole (FXA550S shown).



Tighten the 6 screws using a Philips screw driver so that the attached brackets securely clamp onto the ceiling/wall material (FXA550S shown).



Attach press fit grille by aligning grille with speaker enclosure then applying force until grille is flush with speaker bezel. (FXA550S shown).

James
LOUDSPEAKER

535 Airpark Road, Napa, CA 94558

Ph: 707.265.6343

www.jamesloudspeaker.com