

Hardware Installation Guide

Hardware-Installationshandbuch

Guida all'installazione dell'hardware

To start using your DVR, you need the following:

1. A high-definition TV capable of displaying 720p or 1080p video.
2. A router with a broadband internet connection.
3. A mobile device (Android or iOS) to download the mobile app.

Deutsch

Um Ihren DVR zu verwenden, benötigen Sie Folgendes:

1. Ein High-Definition-TV in der Lage, 720p oder 1080p Video anzuzeigen.
2. Ein Router mit Breitband-Internetverbindung.
3. Ein mobiles Gerät (Android oder iOS), um die mobile App herunterzuladen.

Italiano

Per iniziare a utilizzare il DVR, è necessario quanto segue:

1. Un televisore ad alta definizione in grado di visualizzare video 720p o 1080p.
2. Un router con una connessione Internet a banda larga.
3. Un dispositivo mobile (Android o iOS) per scaricare l'app mobile.

First!
Ersten!
Prima!



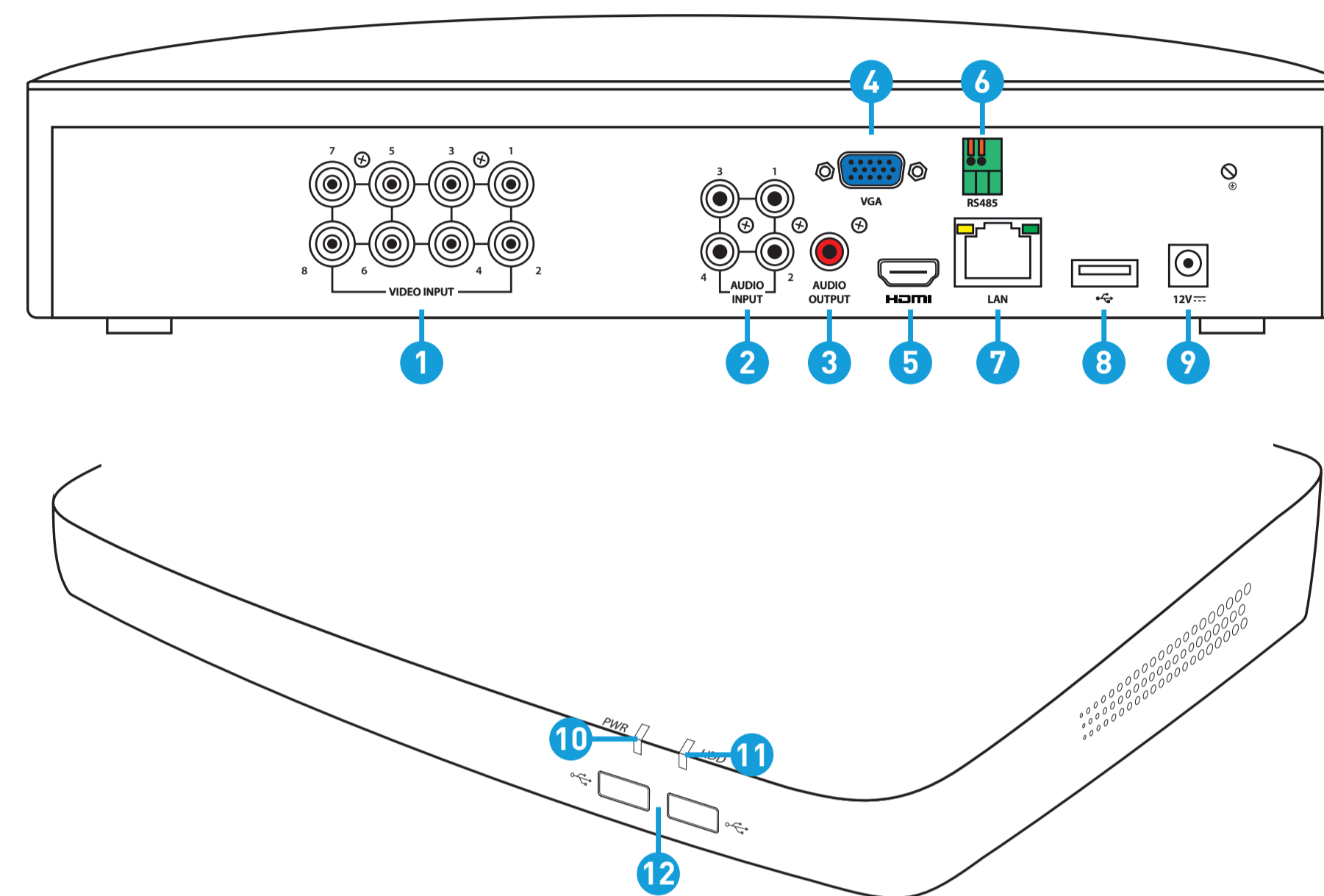
QH_4816CH_4680_5680_4KRLEDEI_130520 | © Swann 2020

Step/Schritt/Passo: 1 (8 Channel model illustration shown)

This installation guide will assist you on getting your DVR up and running as soon as possible. To make sure nothing was damaged during shipping, we recommend that you connect everything and try it before you do a permanent installation.

Deutsch: Dieser Leitfaden wird Ihnen helfen, Ihren DVR so schnell wie möglich laufen zu lassen. Es wird empfohlen, alles zu verbinden und auszuprobieren, bevor Sie eine permanente Installation durchführen.

Italiano: Questa guida vi aiuterà a ottenere il vostro DVR in esecuzione il più presto possibile. Si consiglia di collegare tutto e provare prima di fare un'installazione permanente.



- | | |
|------------------|--------------------|
| 1. Camera Inputs | 7. Ethernet Port |
| 2. Audio Inputs | 8. USB Port |
| 3. Audio Output | 9. Power Port |
| 4. VGA Port | 10. Power LED |
| 5. HDMI Port | 11. Hard Drive LED |
| 6. PTZ Port | 12. USB Port/s |

1. Keep your DVR free from obstructions to maintain optimal operating temperature.
1. Halten Sie Ihren DVR frei von Hindernissen, um eine optimale Temperatur zu halten.
1. Mantenere il DVR libero da ostacoli per mantenere una temperatura ottimale.
2. Some of the connections illustrated may differ with your DVR model.
2. Einige der Verbindungen können sich von Ihrem DVR-Modell unterscheiden.
2. Alcune delle connessioni illustrate possono differire con il modello DVR.

Step/Schritt/Passo: 2

1. Camera Inputs: Connect your cameras here. Twist the video connection to lock it in place.

2. Audio Input/s: For connecting a microphone to record audio (the microphone must have its own power source).

3. Audio Output: For connecting to a stereo or amplifier. This is not required when using the HDMI port.

4. VGA Port: Connect this to your monitor with a VGA input (VGA cable not supplied). This is not required when using the HDMI port.

5. HDMI Port: Connect this to your TV with a HDMI input (HDMI cable supplied).

6. PTZ Port: For connecting RS-485 compatible devices.

7. Ethernet Port: Connect this to your router so your DVR can connect to the internet (Ethernet cable supplied).

8. USB Port (8 & 16 Channel models only): This port is USB 3.0 compatible. If you have a USB 3.0 flash drive, connect it here to copy events or to perform a firmware upgrade.

9. Power Port: Connect the 12V power adapter here.

10. Power LED: Indicates your DVR has power.

11. Hard Drive LED: Flashes when the hard drive is active.

12. USB Ports: Connect your mouse to one of the ports. Connect a USB flash drive to the other port.

FCC Warning Statement:

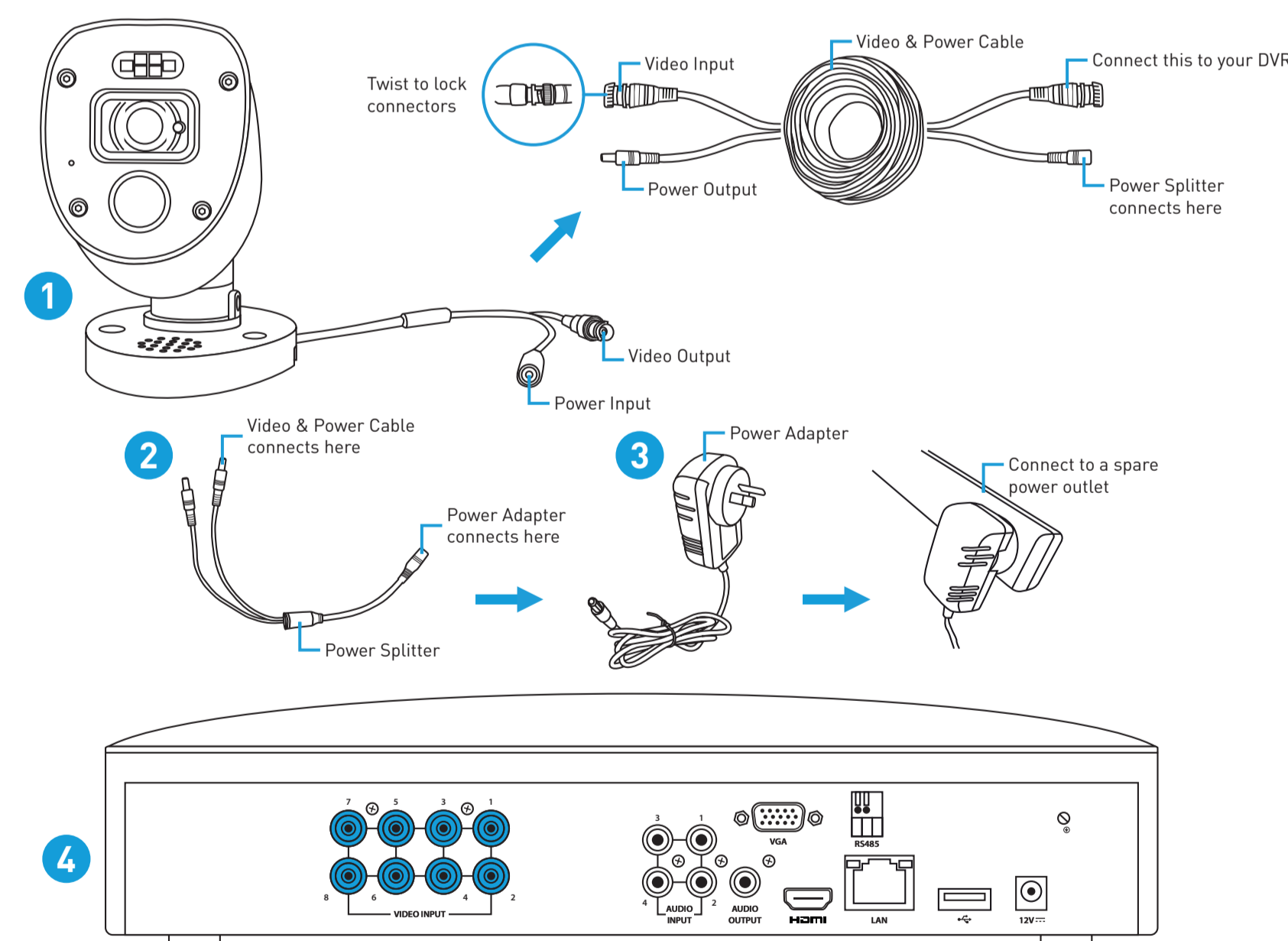
This device complies with part 15 of the FCC Rules. Operation is subject to the following two conditions: (1) This device may not cause harmful interference and (2) this device must accept any interference received, including interference that may cause undesired operation.

Battery Safety Information:

This product contains a coin/button cell battery. If the cell battery is swallowed, it can cause severe internal burns and can lead to death. Keep away from babies and small children at all times.

- If the battery is swallowed or placed inside any part of the body, immediately seek medical help
- Risk of explosion if incorrect battery is used
- Dispose of used battery properly

Step/Schritt/Passo: 3 (8 Channel model illustration shown)



1. Connect the video output and power input connections on the camera to the corresponding connections on the video & power cable.

2. Connect the power splitter to the other end of the video & power cable. This will power multiple cameras using a single power adapter.

3. Connect the other end of the power splitter to the power adapter then connect the power adapter to a spare power outlet.

4. Connect the video output on the video & power cable to each camera input on your DVR. Twist the connection to lock it in place.

Deutsch

1. Schließen Sie die Videoausgangs- und Stromeingangsanschlüsse der Kamera an die Anschlüsse am Video- und Netzkabel an.

2. Schließen Sie den Stromteiler an das andere Ende des Video- und Netzkabels an.

3. Schließen Sie das andere Ende des Netzteilers an das Netzteil an und schließen Sie dann das Netzteil an eine Ersatzsteckdose an.

4. Schließen Sie den Videoausgang am Video- und Netzkabel an jeden Kameraeingang Ihres DVR an.

Italiano

1. Collegare l'uscita video e le connessioni di ingresso di alimentazione sulla fotocamera alle connessioni sul cavo video e di alimentazione.

2. Collegare il divisore di alimentazione all'altra estremità del cavo di alimentazione e video.

3. Collegare l'altra estremità del divisore di alimentazione all'adattatore di alimentazione, quindi collegare alla presa di corrente.

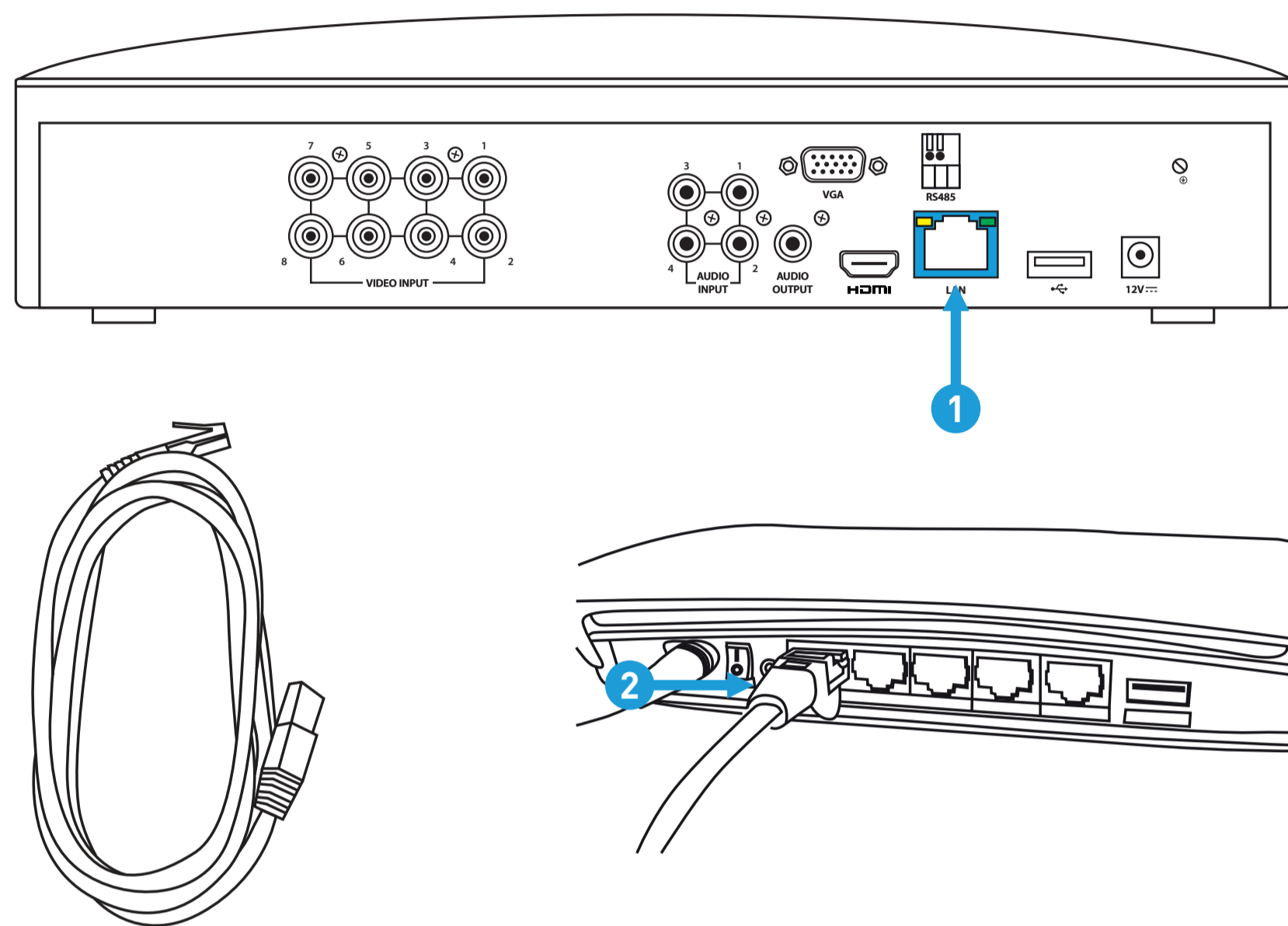
4. Collegare l'uscita video sul cavo video e di alimentazione a ciascun ingresso della telecamera.

Step/Schritt/Passo: 4 (8 Channel model illustration shown)

Connect to your Home Network: Connect the supplied Ethernet cable to the Ethernet port (1) on your DVR then connect the other end to a spare port (2) on your router or Wi-Fi access point. Don't proceed to the next step until this is done.

Verbinden Sie sich mit Ihrem Heimnetzwerk: Schließen Sie das mitgelieferte Ethernet-Kabel an den Ethernet-Port (1) Ihres DVR an und verbinden Sie dann das andere Ende mit einem Ersatzport (2) an Ihrem Router oder WLAN-Zugriffspunkt.

Connettersi alla rete domestica: Collegare il cavo Ethernet fornito alla porta Ethernet (1) sul DVR, quindi collegare l'altra estremità a una porta di riserva (2) sul router o sul punto di accesso Wi-Fi.



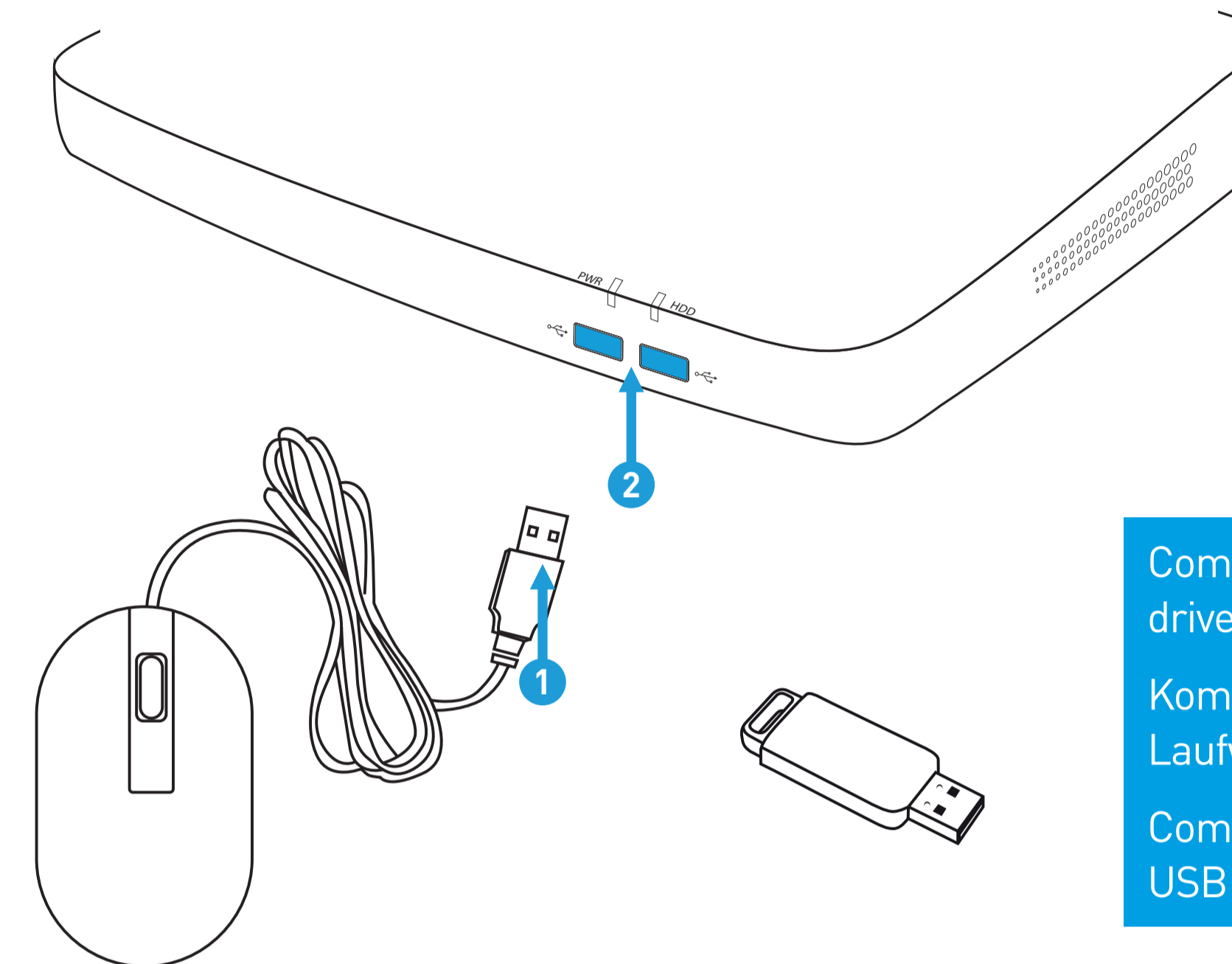
5

Step/Schritt/Passo: 5

Connect your Mouse: Connect the supplied mouse (1) to one of the available USB ports (2) located at the front. To copy events and to perform a firmware upgrade, connect a USB flash drive (not supplied) to the other port.

Verbinden Sie die Maus: Schließen Sie die Maus (1) an einen der verfügbaren USB-Anschlüsse (2) an der Vorderseite an. Schließen Sie ein USB-Flashlaufwerk an den anderen Port an, um Ereignisse zu kopieren.

Collegare il mouse: Collegare il mouse (1) a una delle porte USB disponibili (2) nella parte anteriore. Collegare un'unità flash USB all'altra porta per copiare gli eventi.



Compatible with USB flash drives up to 128GB.

Kompatibel mit USB-Flash-Laufwerken bis zu 128 GB.

Compatibile con unità flash USB fino a 128 GB.

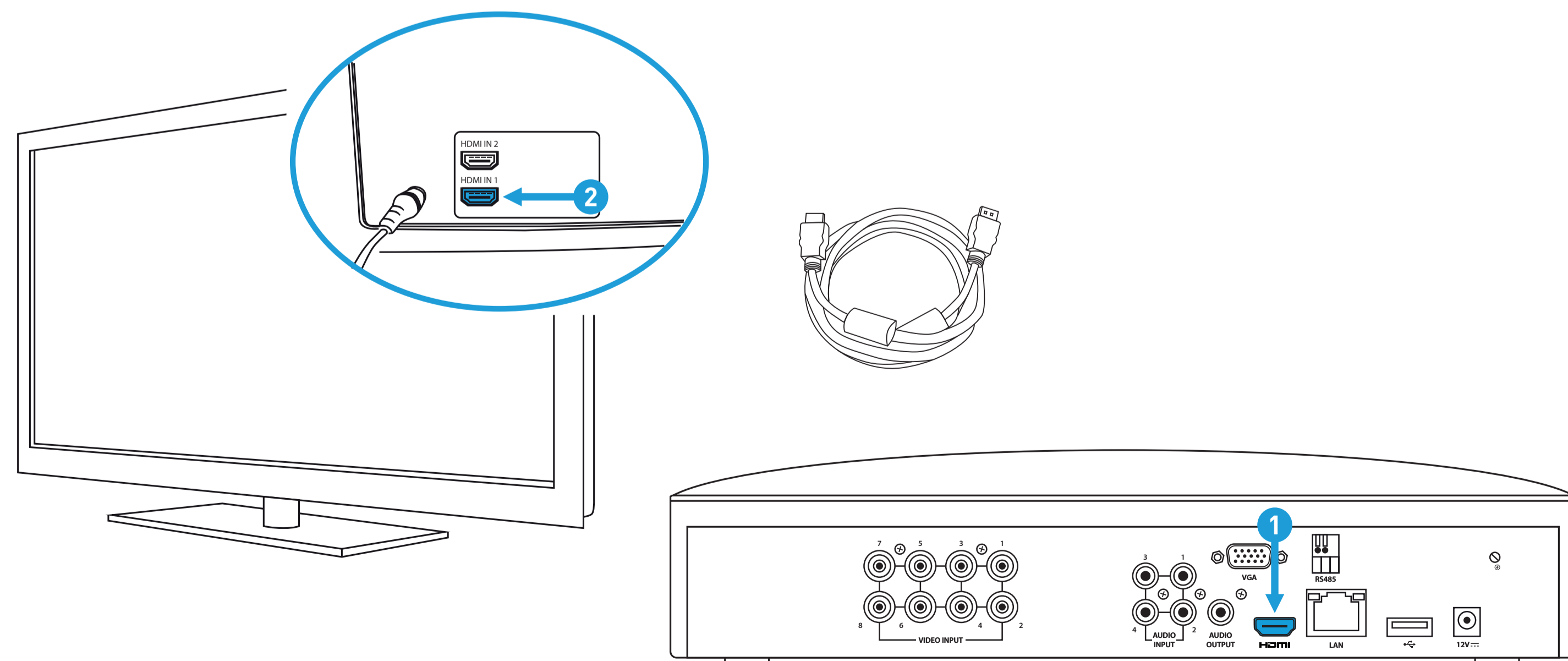
6

Step/Schritt/Passo: 6 (8 Channel model illustration shown)

Connect to your TV: Connect the supplied HDMI cable to the HDMI port (1) then connect the other end to a spare HDMI input (2) on your TV. Press the A/V button on your TV's remote to select the HDMI input.

Anschließen an Ihren Fernseher: Schließen Sie das HDMI-Kabel an den HDMI-Anschluss (1) an und schließen Sie dann das andere Ende an einen Ersatz-HDMI-Eingang (2) an Ihrem Fernseher an.

Collegare alla TV: Collegare il cavo HDMI alla porta HDMI (1) quindi collegare l'altra estremità a un ingresso HDMI di riserva (2) sul televisore. Premere il pulsante A/V sul telecomando del televisore per selezionare l'ingresso HDMI.



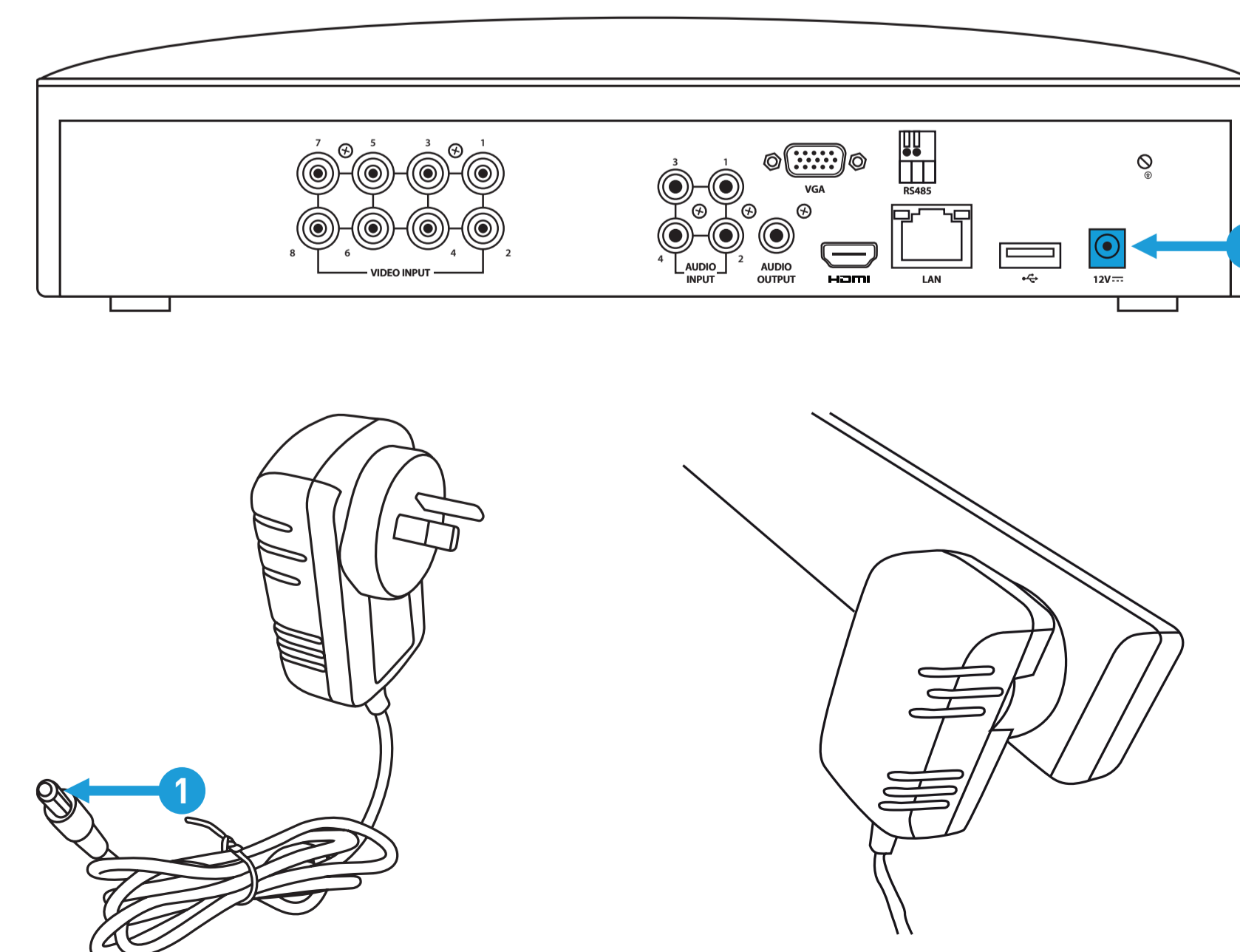
7

Step/Schritt/Passo: 7 (8 Channel model illustration shown)

Connect your Power Adapter: Connect the supplied power adapter's power connection (1) to the power input (2) on your DVR first (to minimize sparking). Connect the power adapter to a power outlet to supply power.

Schließen Sie Ihren Netzadapter an: Schließen Sie den Netzanschluss des mitgelieferten Netzteils (1) an den Stromeingang (2) Ihres DVR an (um die Funkenflugzufuhr zu minimieren).

Collegare prima l'adattatore di alimentazione: Collegare la connessione di alimentazione dell'adattatore di alimentazione fornito (1) all'ingresso di alimentazione (2) sul DVR (per ridurre al minimo la scintilla).



You will see the Startup Wizard displayed. Follow the "Startup Wizard Quick Start Guide" (the red coloured guide) to configure and setup your DVR.

Der Start-Assistent wird angezeigt. Folgen Sie der "Start assistent Schnellstartanleitung" (rote Anleitung), um Ihren DVR zu konfigurieren.

Verrà visualizzata la procedura guidata di avvio. Seguire la "Guida rapida guidata" (la guida di colore rosso) per configurare e configurare il DVR.

8