



# User Guide

Kasa Smart Wi-Fi Plug Slim, Energy Monitoring  
KP115



# Contents

About This Guide .....	1
Introduction .....	2
Appearance .....	3
Set Up Your Smart Wi-Fi Plug Slim .....	4
Main Device Controls .....	5
Configure Your Smart Wi-Fi Plug Slim .....	6
Create Scenes .....	8
Smart Actions .....	10
Voice & Third-Party Support .....	23
Authentication .....	27

# About This Guide

This guide provides a brief introduction to Kasa Smart Wi-Fi Plug Slim and the Kasa Smart app, as well as regulatory information.

Features available in Kasa may vary by model and software version. Kasa availability may also vary by region. All images, steps, and descriptions in this guide are only examples and may not reflect your actual Kasa experience.

## Conventions

In this guide, the following convention is used:

Convention	Description
Teal	Key information appears in teal, including management page text such as menus, items, buttons and so on.
<u>Underline</u>	Hyperlinks are in teal and underlined. You can click to redirect to a website.

## More Info

- Specific product information can be found on the product page at <https://www.tp-link.com/>.
- A Technical Community is provided for you to discuss our products at <https://community.tp-link.com/>.
- Our Technical Support contact information can be found at the Help center of the Kasa Smart app and the [Contact Technical Support](https://www.tp-link.com/support/) page at <https://www.tp-link.com/support/>.

# Introduction

Kasa Smart Wi-Fi Plug Slim is a compact home device that turns your typical electrical wall outlet into a controllable, customizable and multi-functional outlet, enabling you to easily control your lights and household electronic devices via Kasa Smart app on your iOS or Android devices, no matter where you find yourself.



Control from Anywhere



Compact Design



No Hub Required



Home Automation



Energy Monitoring

- **Control from Anywhere-** Manage plugged-in electronics from anywhere with the Kasa Smart app.
- **Compact Design-** Allow two plugs to be stacked in the same outlet.
- **No Hub Required-** Connect to your home's Wi-Fi network. No need for a hub or extra equipment.
- **Home Automation-** Set multiple schedules, create scenes and groups, and simulate occupancy while away with away mode.
- **Energy Monitoring-** Monitor connected devices' real-time energy consumption and know which one is most power-hungry. Reduce unnecessary energy loss and lower your electric bills with the schedule and timer.

# Appearance

Smart Wi-Fi Plug Slim has a control button to turn on/off devices plugged in, and LED to show you the current status. For detailed information, see the explanation below:

\*KP115 (US version) is used for demonstration in this guide.



Press to turn the socket ON or OFF.

Press and hold (for 5 seconds) until the LED flashes amber and blue alternately to initiate the app configuring process (SoftAP).

Press and hold (for 10 seconds) until the LED flashes amber rapidly to factory reset the Smart Plug Slim.

**LED**

**Flashing amber and blue:** Ready for setup.

**Flashing blue rapidly:** Connecting to the network.

**Solid blue:** Connected to the network.

**Flashing amber rapidly:** Factory reset.

**Solid amber:** Initializing, rebooting, or no network connection.

**Off:** The Smart Plug Slim is switched OFF.

# Set Up Your Smart Wi-Fi Plug Slim

Follow the steps below to set up your smart plug via [Kasa Smart](#) app.

## Step 1. Download Kasa Smart app

Go to Google Play or the App Store or scan the QR code below to download and install the Kasa Smart app.

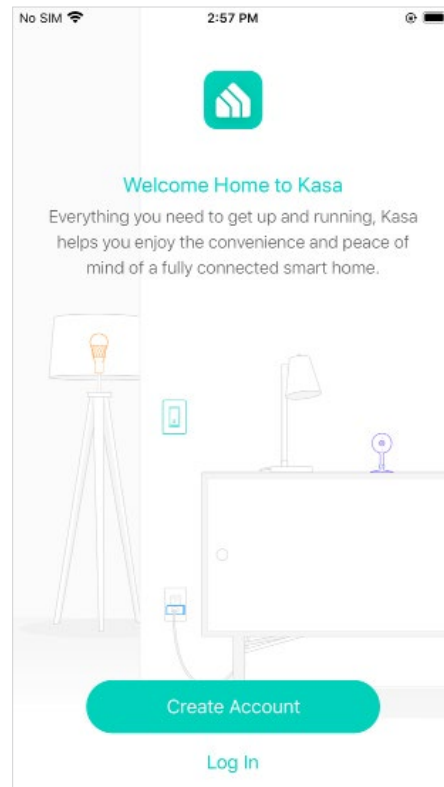


OR



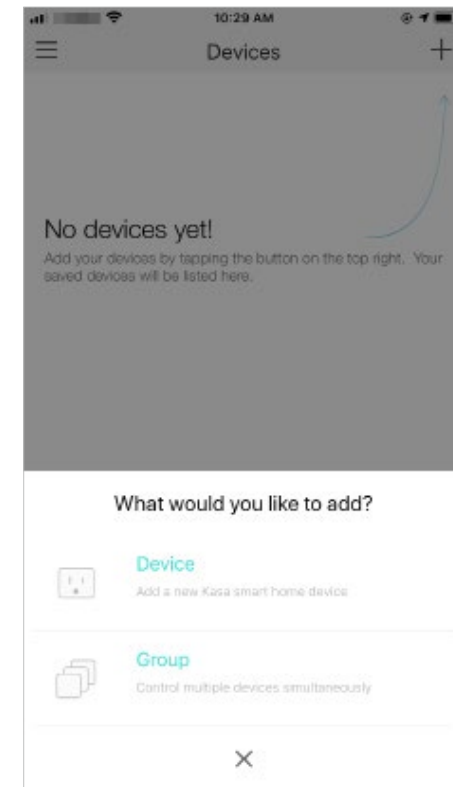
## Step 2. Log In to Kasa Smart App

Open the app and use your TP-Link ID to log in. If you don't have a TP-Link ID, tap [Create Account](#) and the app will guide you through the rest.



## Step 3. Add Your Devices

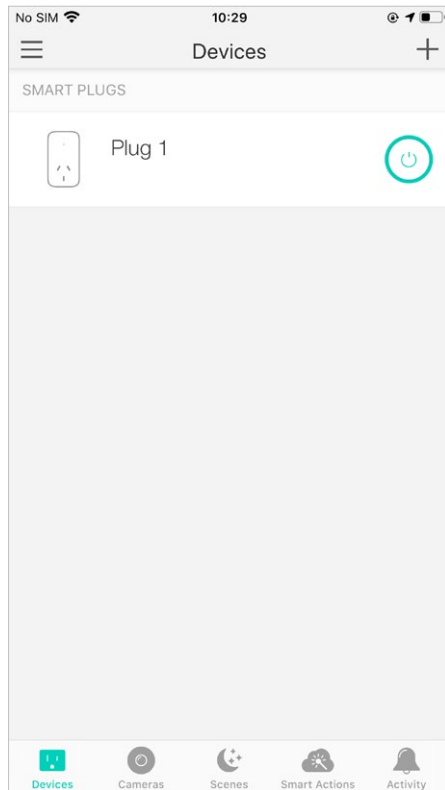
Tap the **+** button in the app and select [Device](#) to add your new Smart Plug. Follow app instructions to complete the setup.



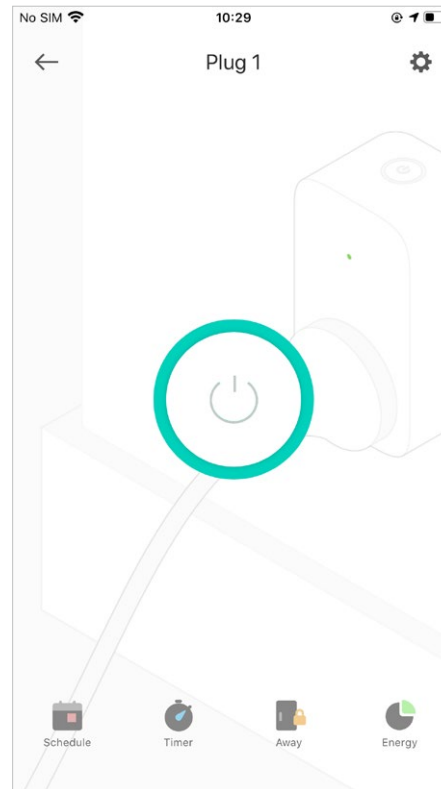
# Main Device Controls

After you successfully set up your smart plug, you will see the home page of the Kasa Smart app. Here you can view and manage all devices that you've added to Kasa. Tap a smart plug to control and manage it.

## Home Page




## Device Status

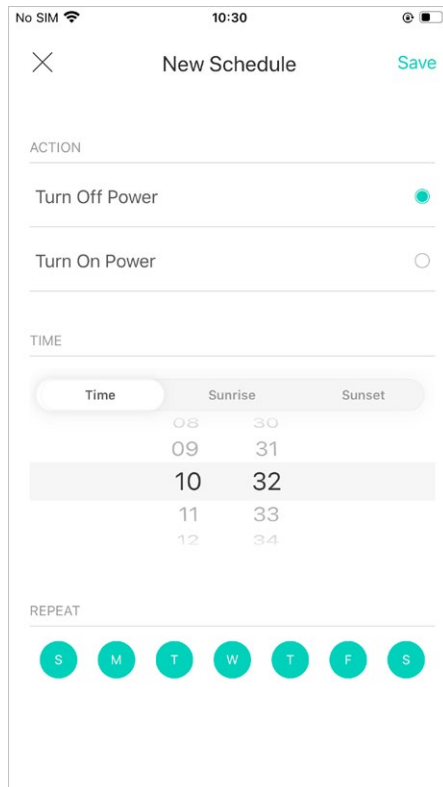


# Configure Your Smart Wi-Fi Plug Slim


On [Device Status](#) page, you can set Schedule, set Timer, preset Away Mode, check Usage and change the settings of your smart plug.

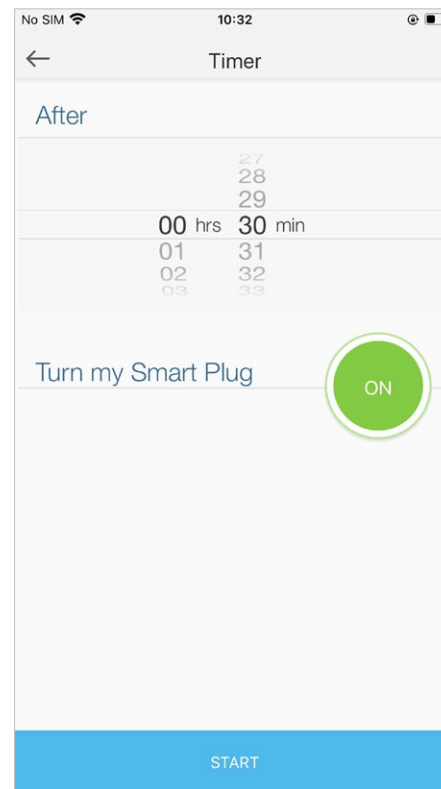
## Set Schedule

Tap  to set a schedule for your smart plug to simplify your daily routine by creating automatic On/Off action.




## Set Timer

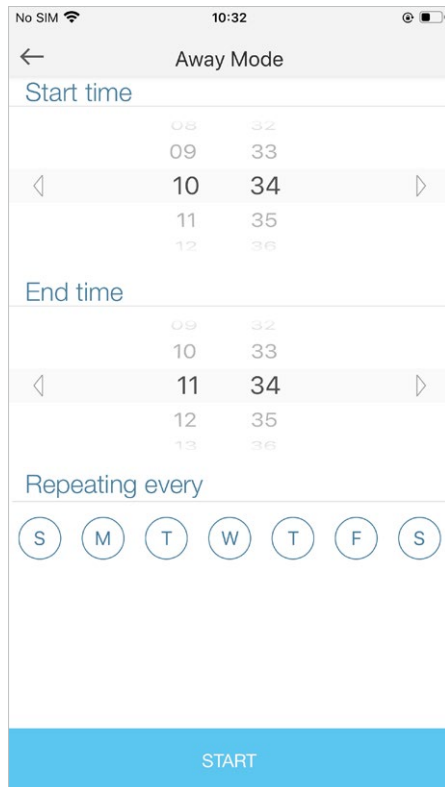
Tap  to set the timer and your smart plug will automatically be turned on/off after the time ends.




## Preset Away Mode

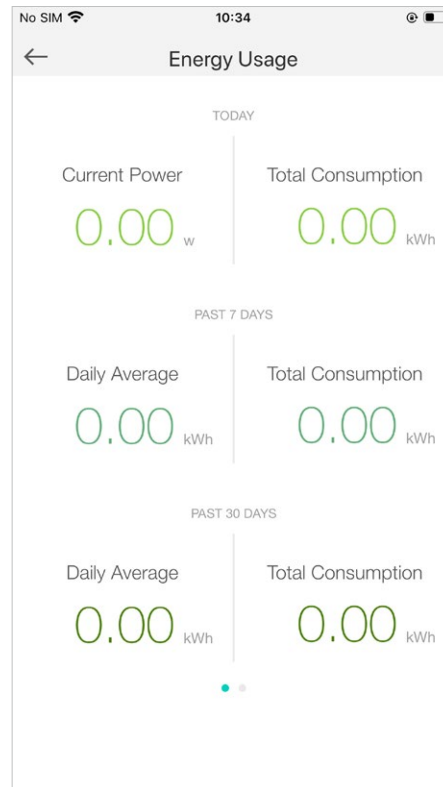
Tap  to preset the Away Mode and your smart plug will be randomly turned on/off during this time.

**Note:** The start and end time must be on the same day.




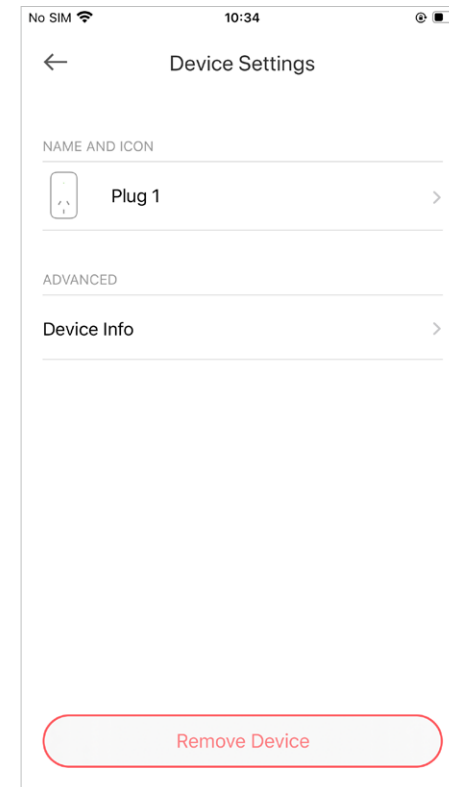
## Check Usage

Tap  to view and track energy consumption.




## Device Settings

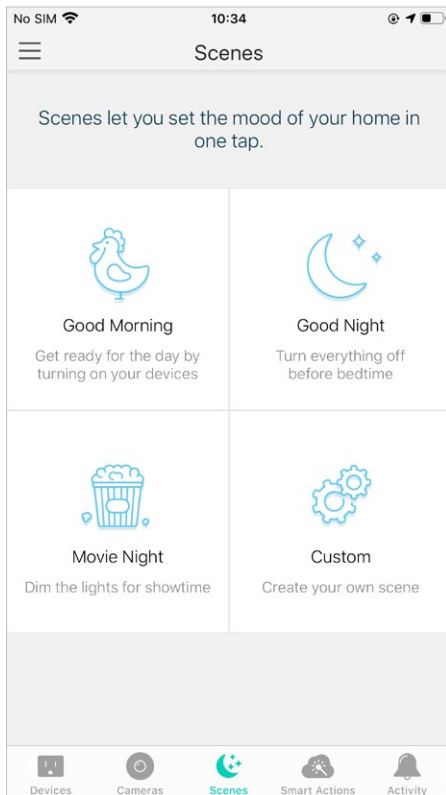
Tap  to view and change the settings of your smart plug.



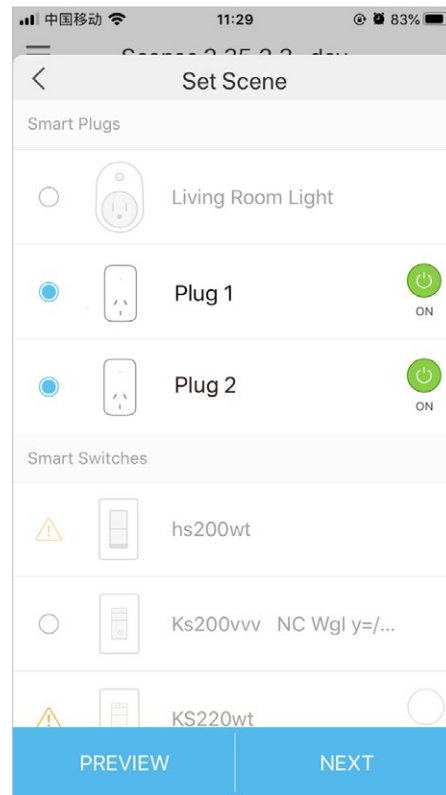
# Create Scenes

A scene is a preset group of smart devices that can be programmed, customized and activated simultaneously at the touch of a button from your smartphone or tablet, allowing you to easily set your mood, activity or fit any special occasion. This page allows you to preset how your smart home devices should act automatically at a specific occasion.

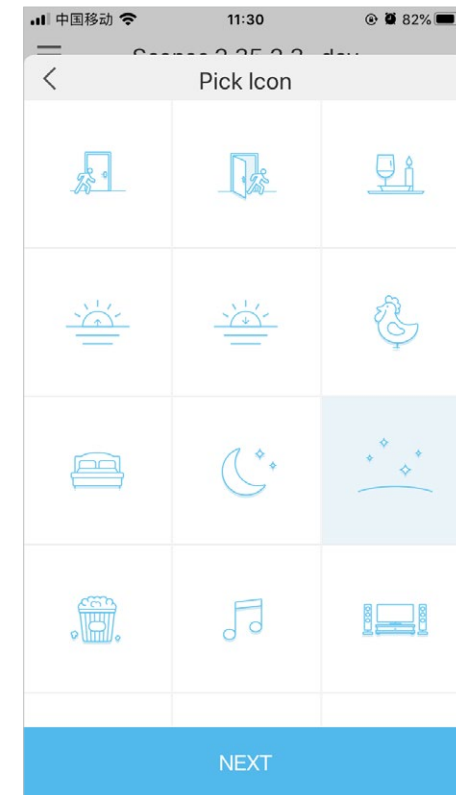
1. Tap  at the bottom, then select a scene or create your own scene.  
E.g. I want to turn on the light and turn off the light strip with one tap.



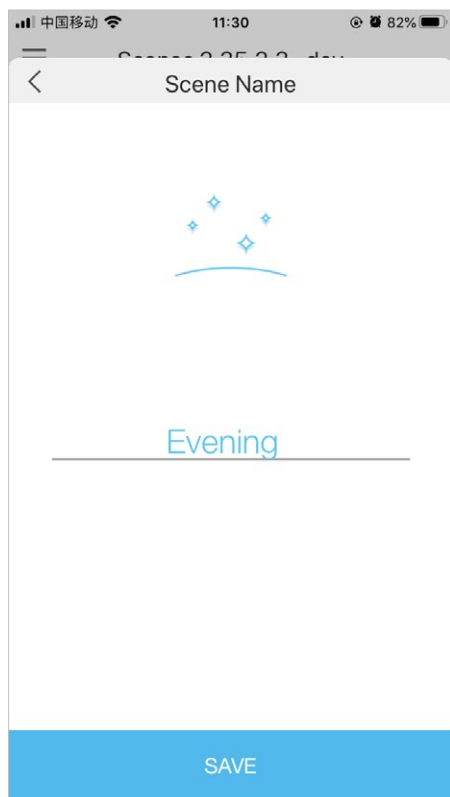
2. Select devices for the scene to work on and set their status respectively. Here we choose two plugs.



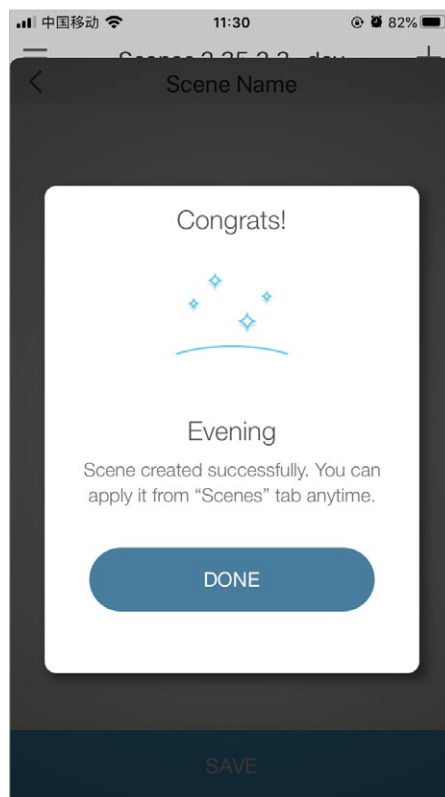
3. Pick an icon for your scene.



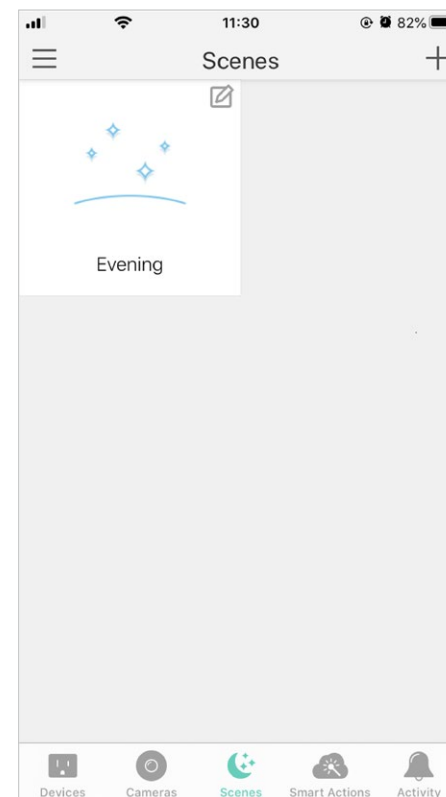
4. Name your scene.



5. Tap **Save**. Then your scene is created successfully.




6. Your scene is displayed in the scene list. Just tap the scene to activate it.



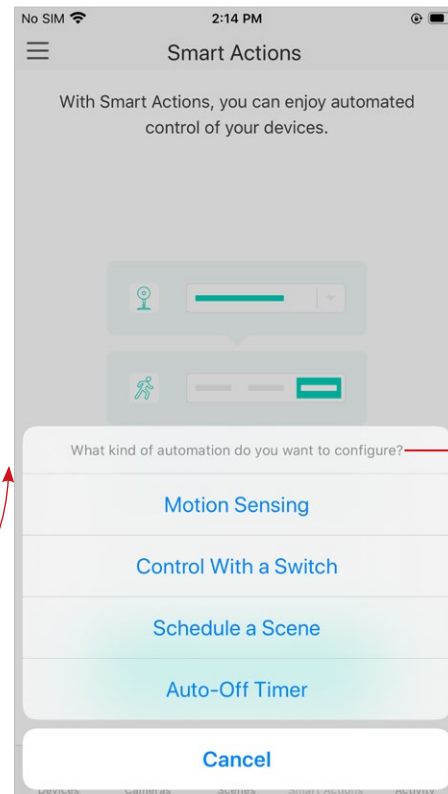
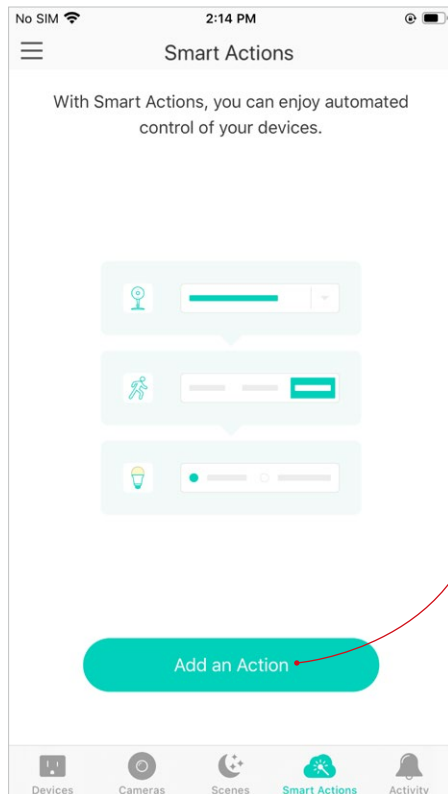
# Smart Actions

Smart Actions is a function that enables device interconnections and home automations. With Smart Actions, your Kasa devices can work together to create a smarter smart home. From the moment you wake up to the moment you drift asleep, Smart Actions make your home safer and more comfortable.

Note: At most three smart actions can be enabled at the same time.

1. Tap  at the bottom, then tap [Add an Action](#).

2. Select an automation type for your Smart Actions.



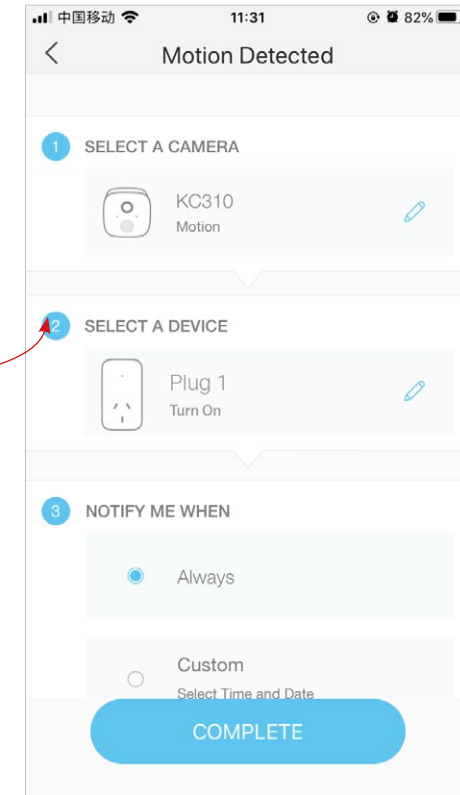
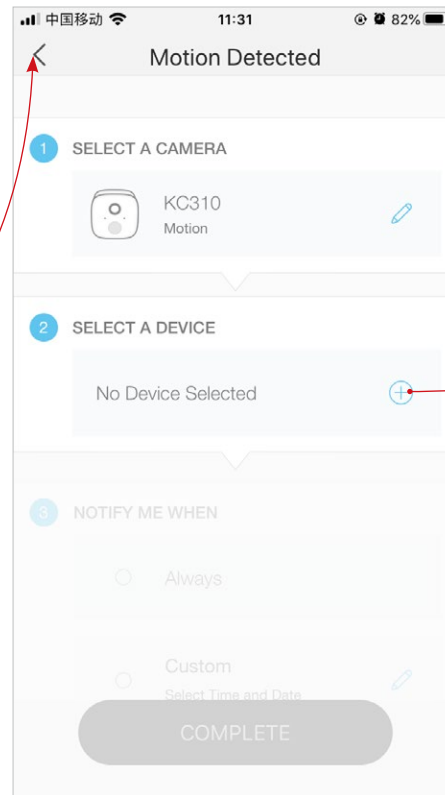
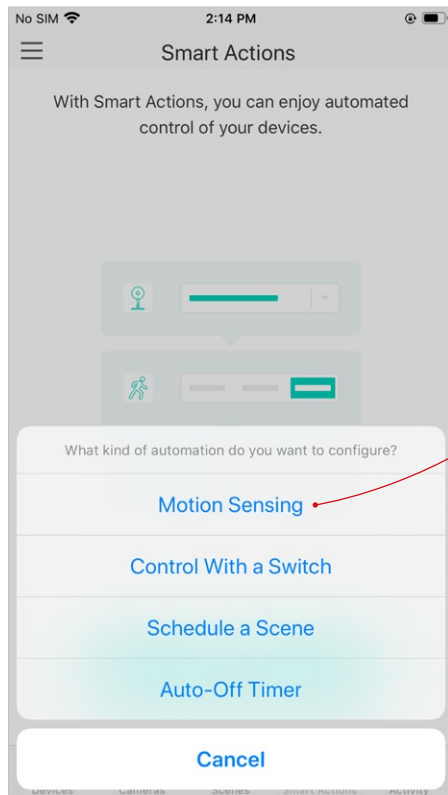
- Motion Sensing:** Take actions when a Kasa camera senses a motion.
- Control With a Switch:** Extend the Smart Switch control to other Kasa Smart devices. Turn on/off a group of devices with the Smart Switch all together.
- Schedule a Scene:** Schedule a "Scene" to be turned on automatically at the time specified.
- Auto-off Timer:** Whenever a Smart device is turned on, turn it off after the designated amount of time.

## Configure Motion Sensing If you already have a Kasa Smart Camera

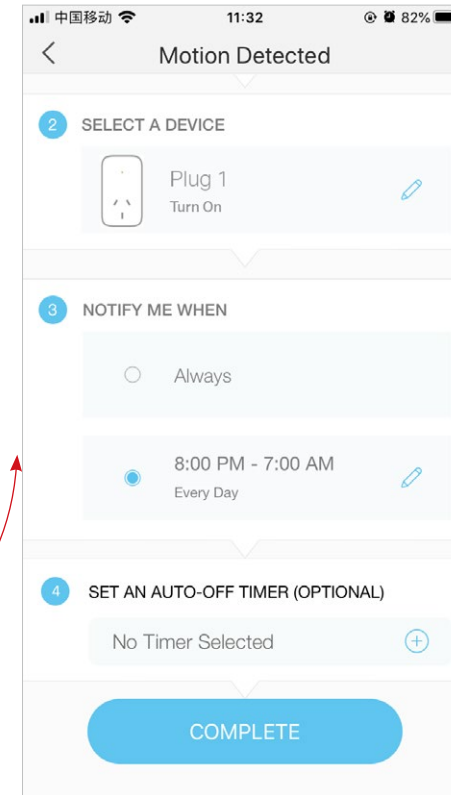
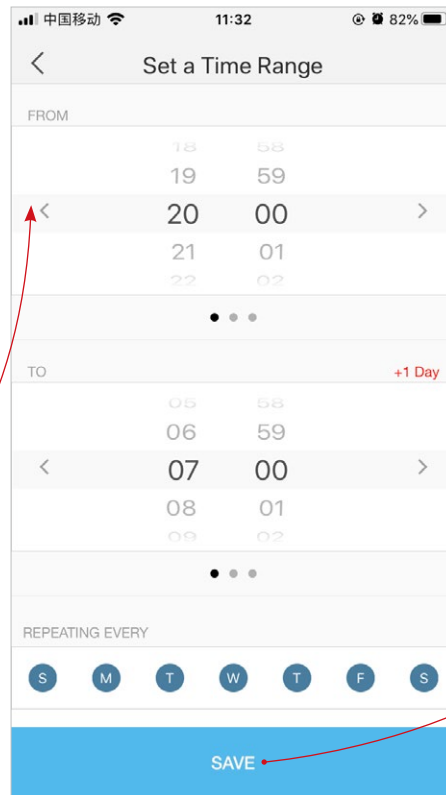
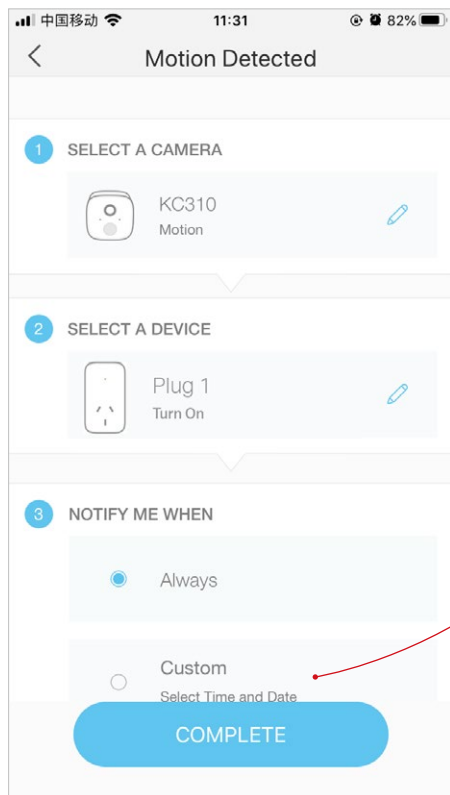
E.g. I want to turn the light on when my Kasa camera senses a motion.

1. Tap **Motion Sensing** then select a camera.

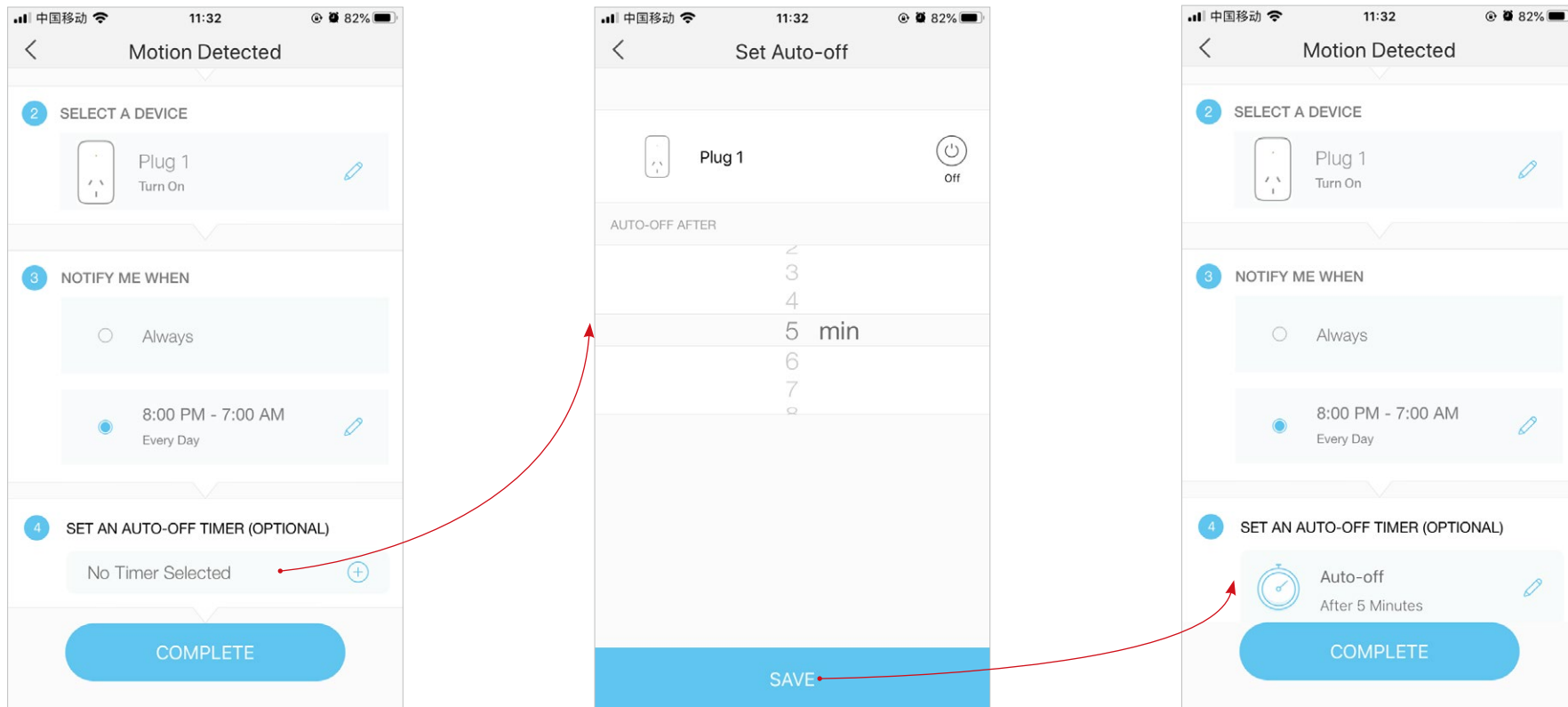
2. Select your Smart Plug.



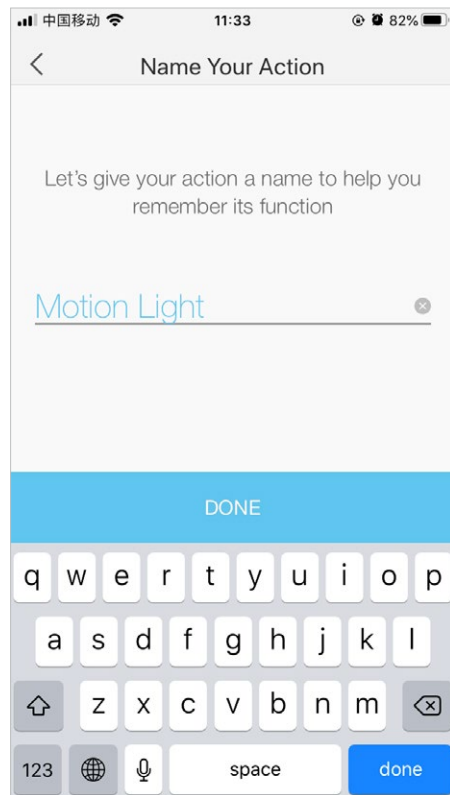
3. Set the time for the actions. You can choose **Always** or tap **Custom** to choose time according to your needs.  
E.g. I want the motion to trigger the light on from 8:00 PM to 7:00 AM every day.



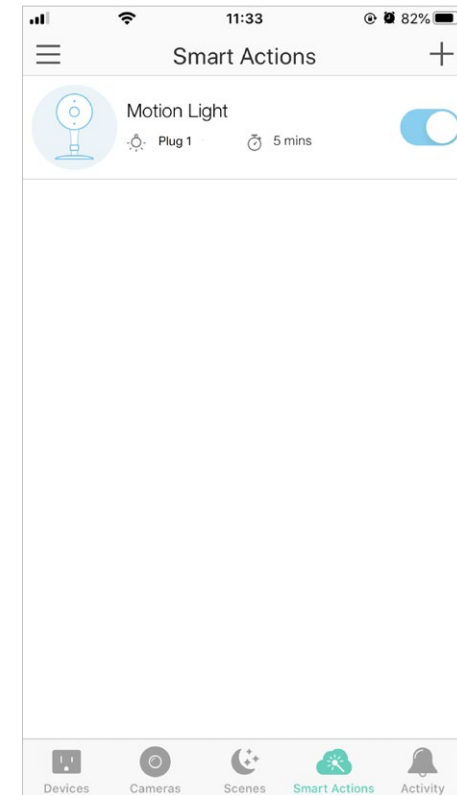
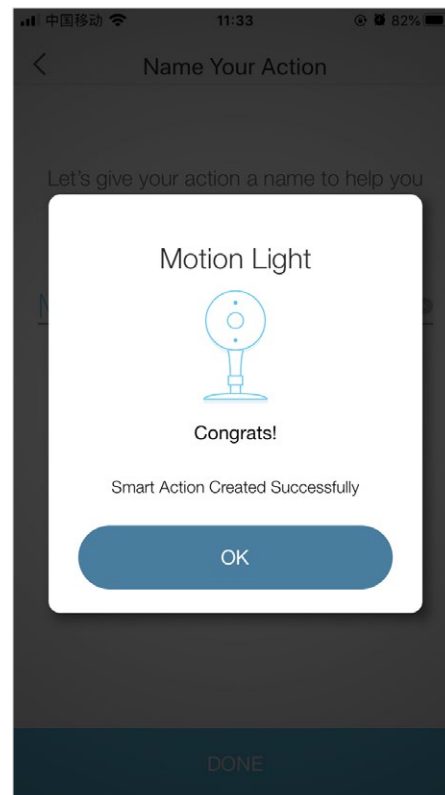
4. (Optional) Set an auto-off timer then tap **Complete**. Then your light will be turned off after the time you set if no motion is detected.



5. Name your action for easy identification.



6. The Smart Action is created successfully and displayed in the Smart Actions list.

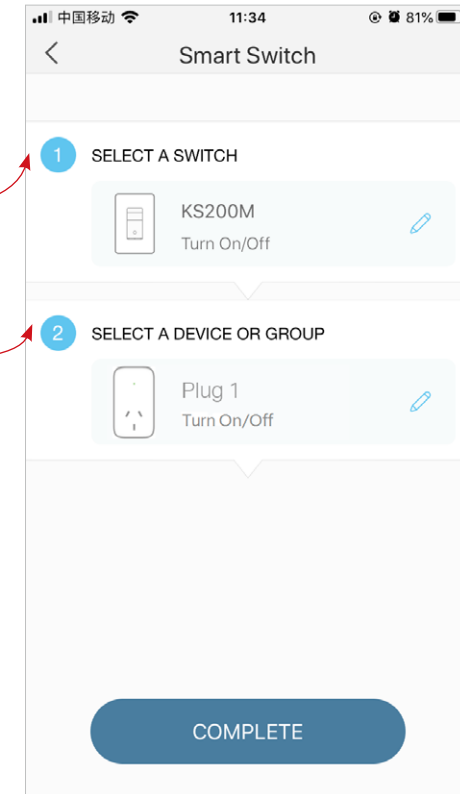
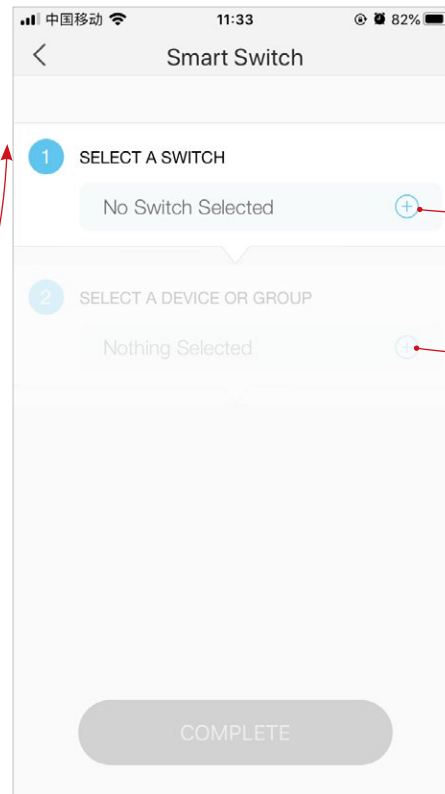
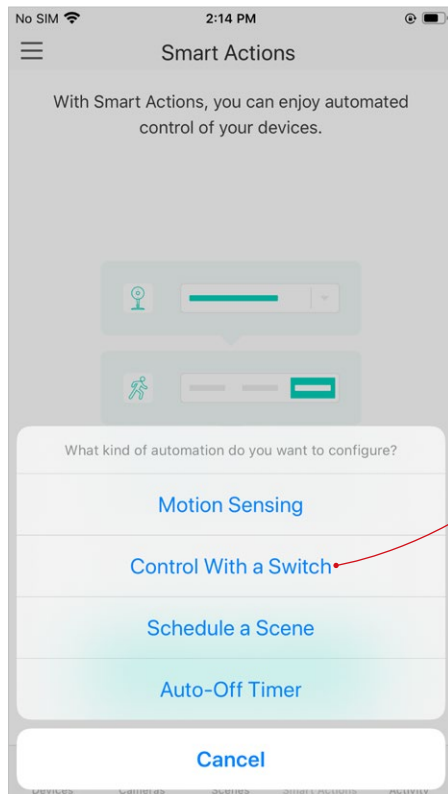


## Configure Control With a Switch If you already have a Kasa Smart Switch

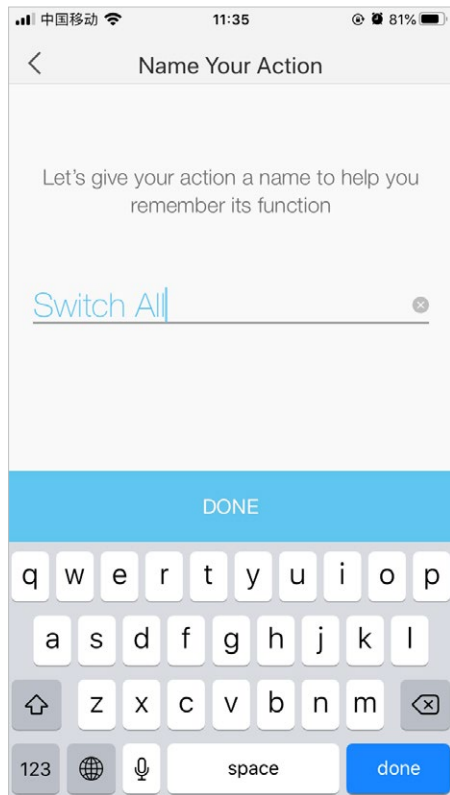
E.g. I want to turn the light on when I turn on my switch, and turn the light off when I turn off the switch.

1. Tap [Control With a Switch](#).

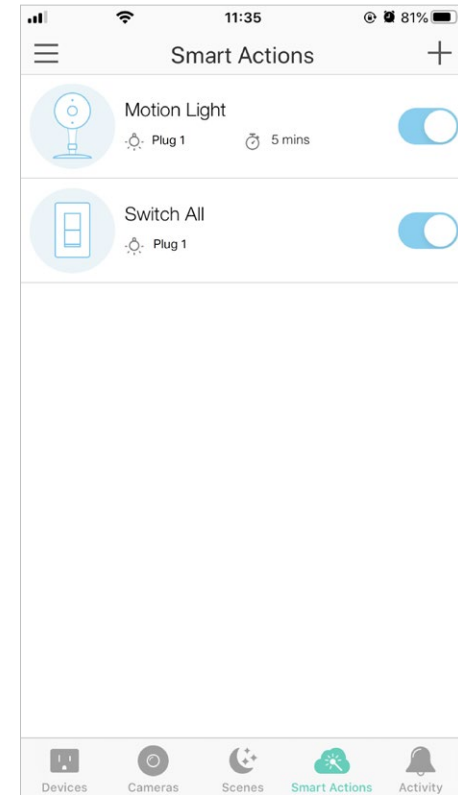
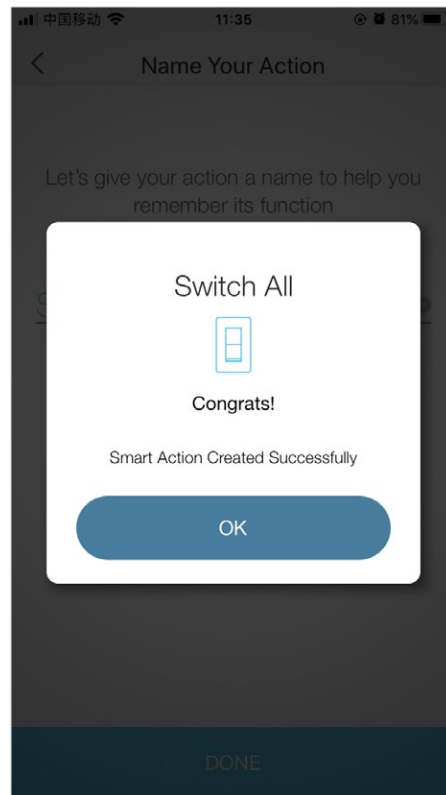
2. Add a Kasa smart switch. Then select your Smart Plug.



3. Name your action for easy identification.



4. Now Your Smart Action is created successfully and displayed in the Smart Actions list.

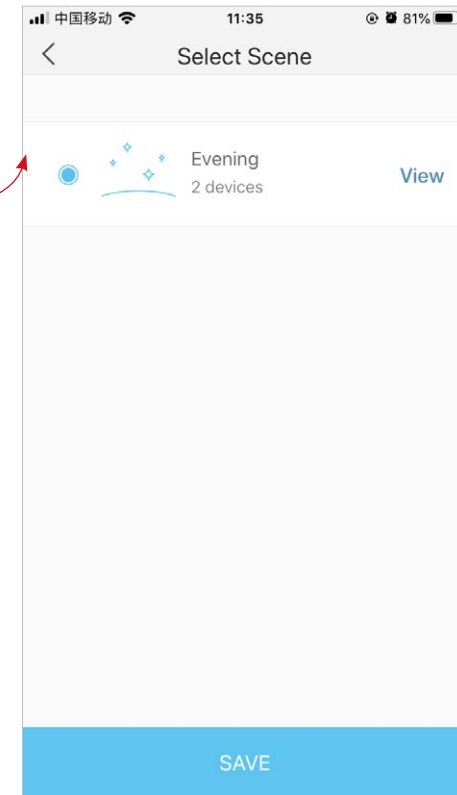
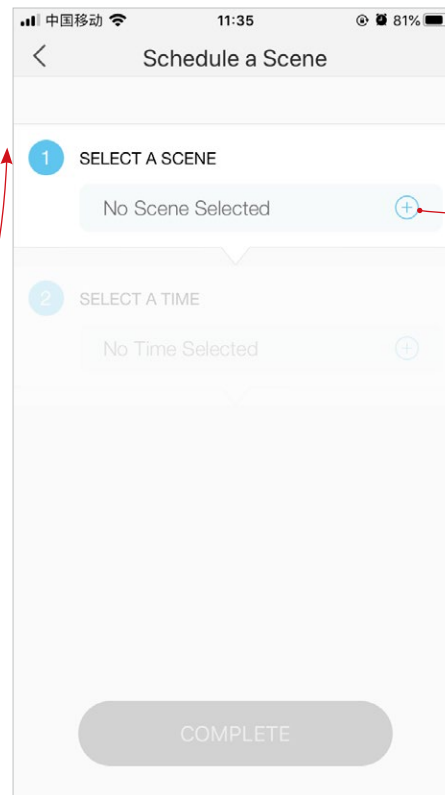
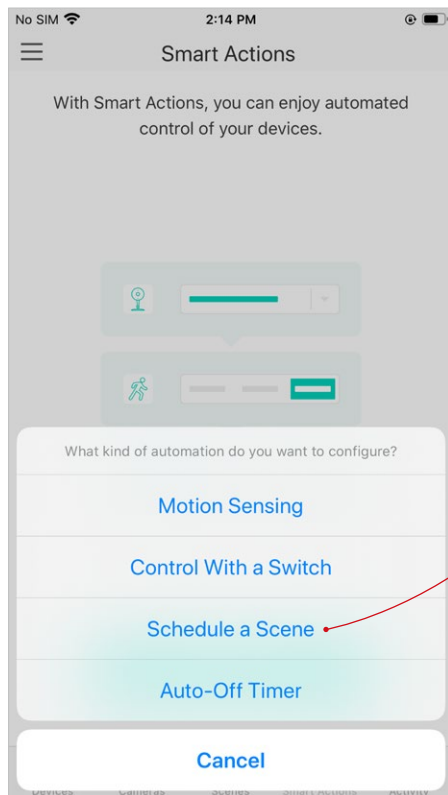


## Configure Schedule a Scene

E.g. I want to turn on the scene I have created automatically at scheduled time.

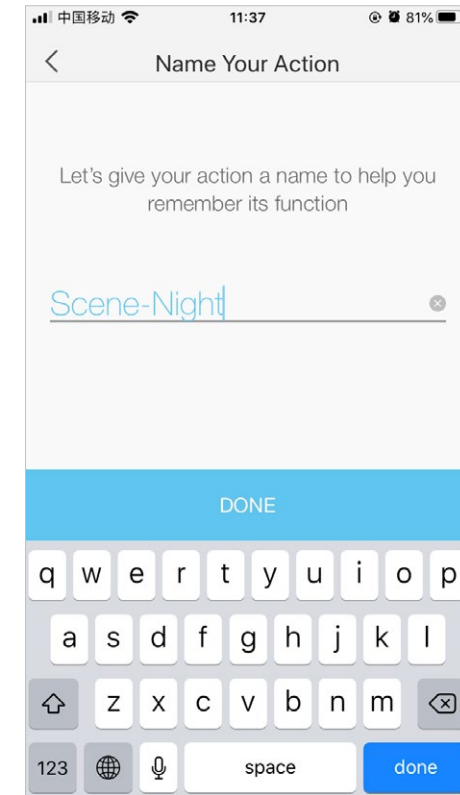
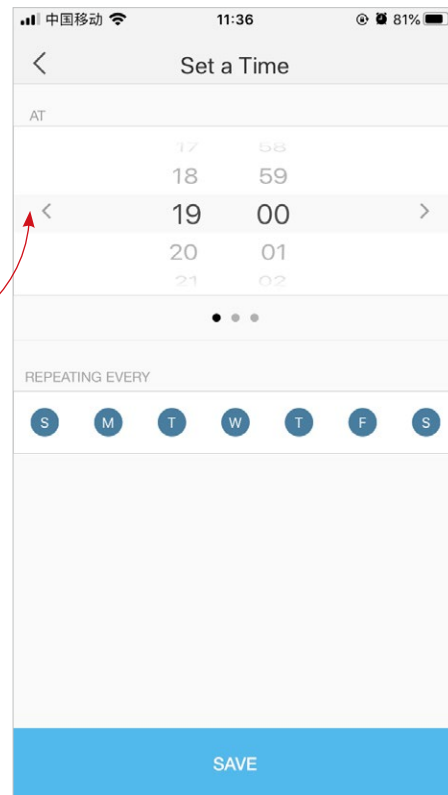
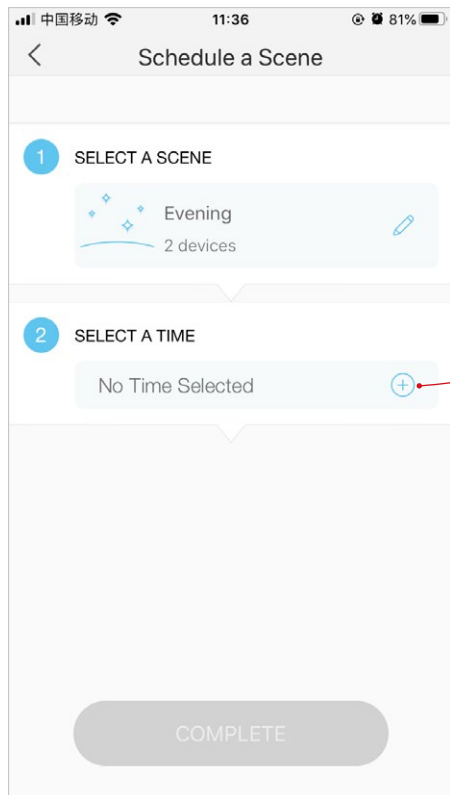
1. Tap [Schedule a Scene](#).

2. Select a scene you have created.

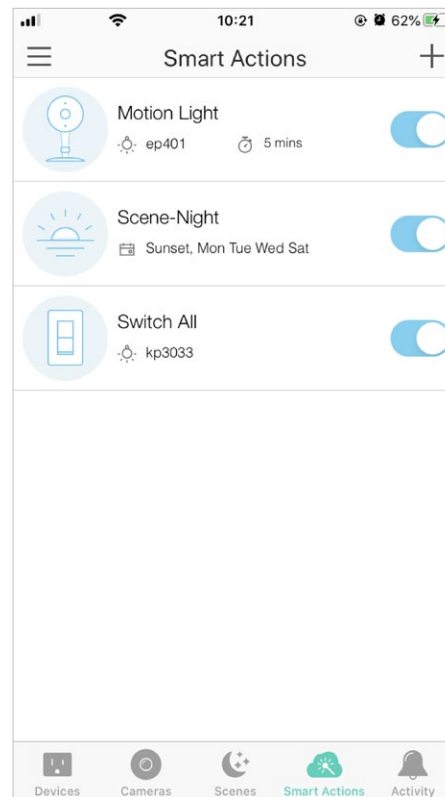
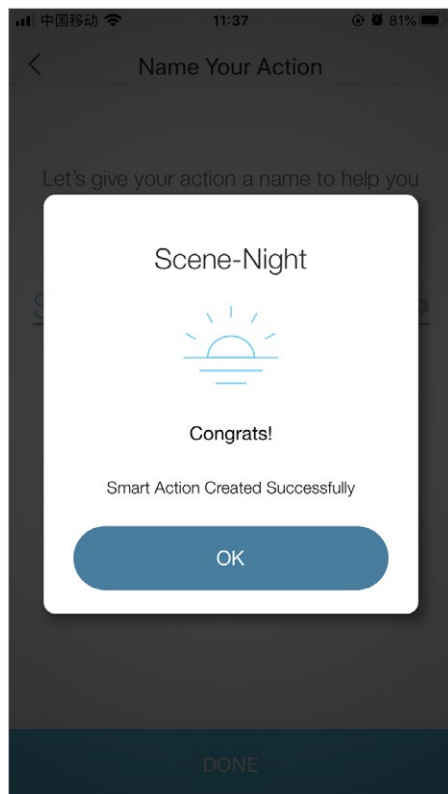


3. Set the time and frequency at which you want your scene to be turned on .

4. Name your action for easy identification.



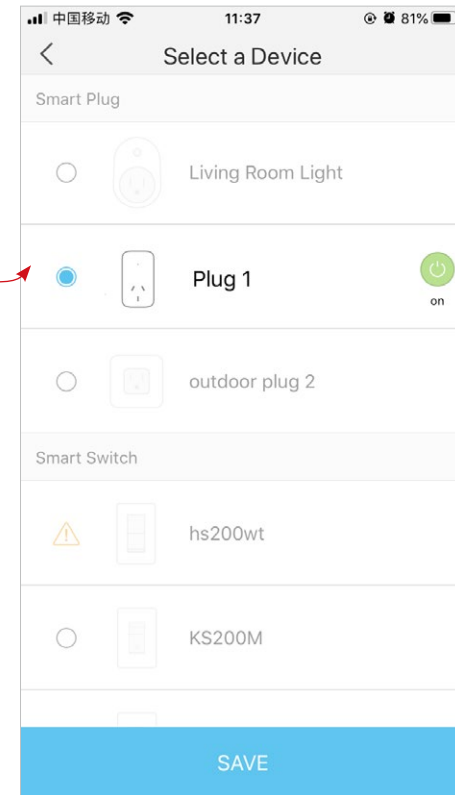
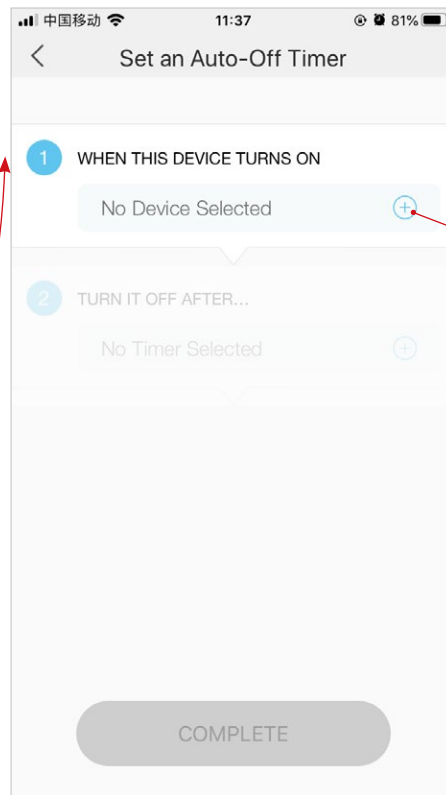
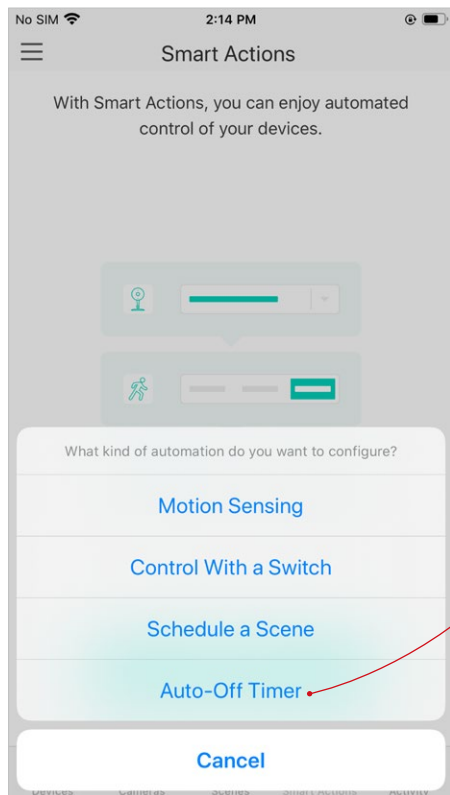
5. Now Your Smart Action is created successfully and displayed in the Smart Actions list.



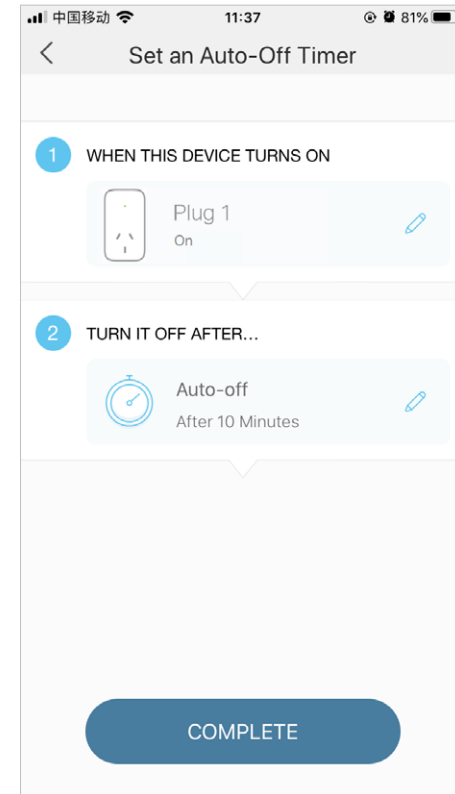
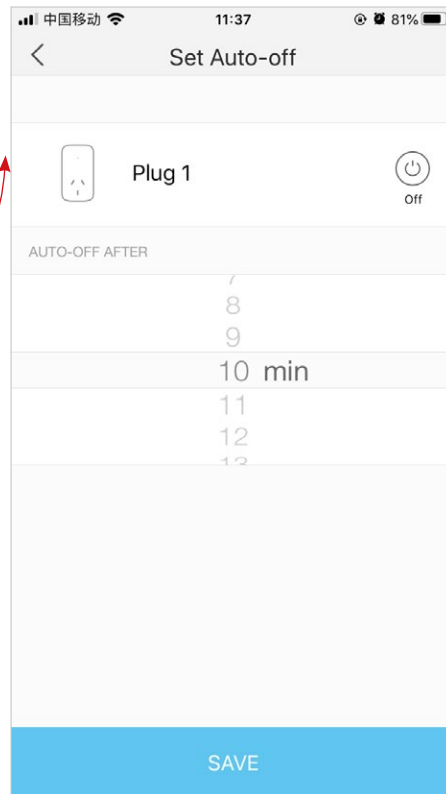
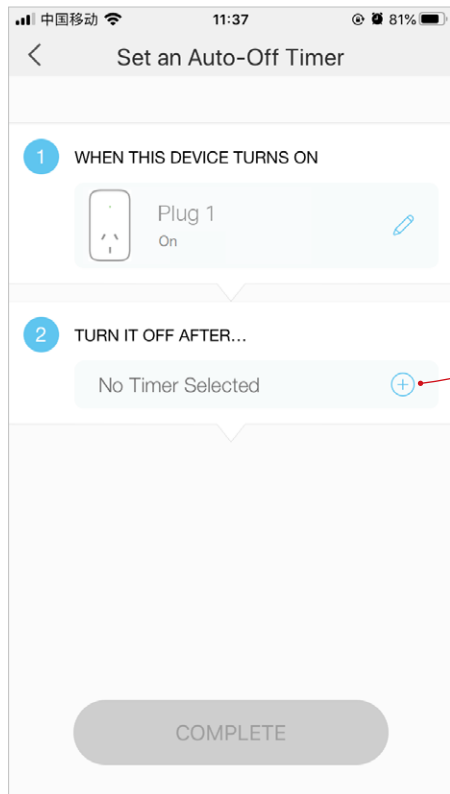
## Configure Auto-Off Timer

E.g. I want to turn off my light after 30 minutes when it is turned on.

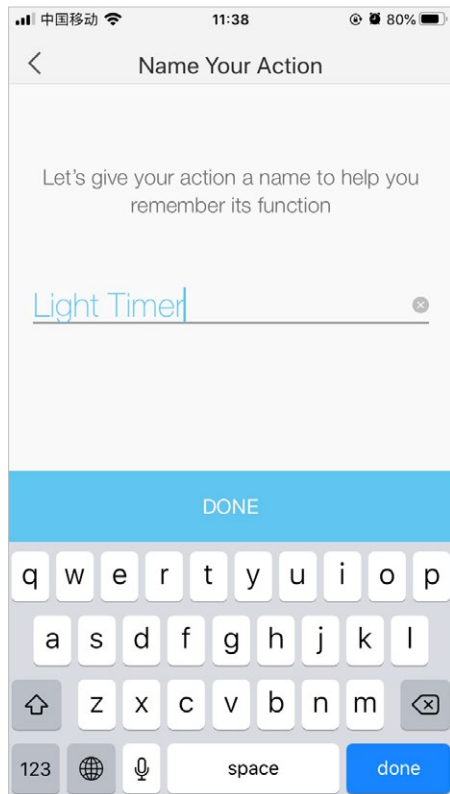
1. Tap [Auto-Off Timer](#), then select your Smart Plug.



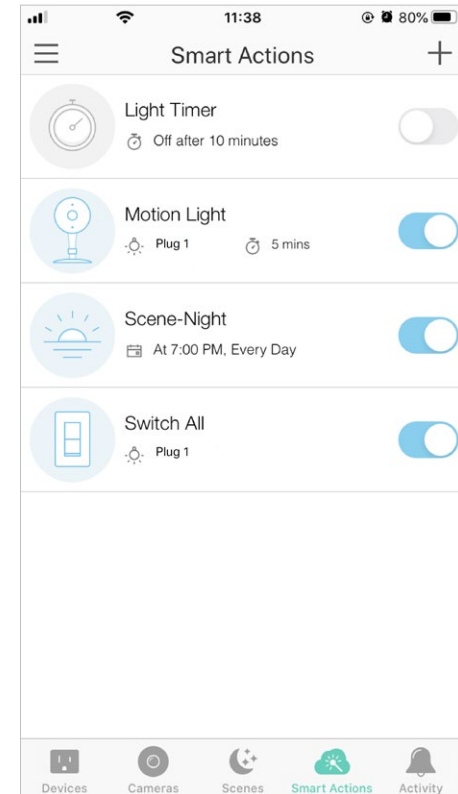
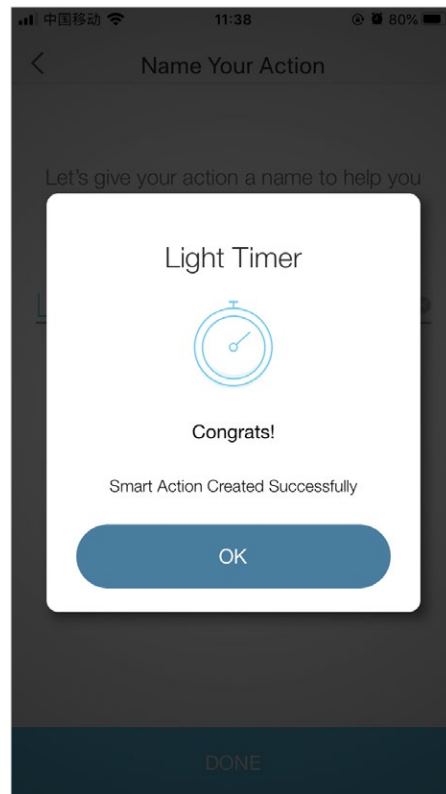
## 2. Set the time.



3. Name your action for easy identification.



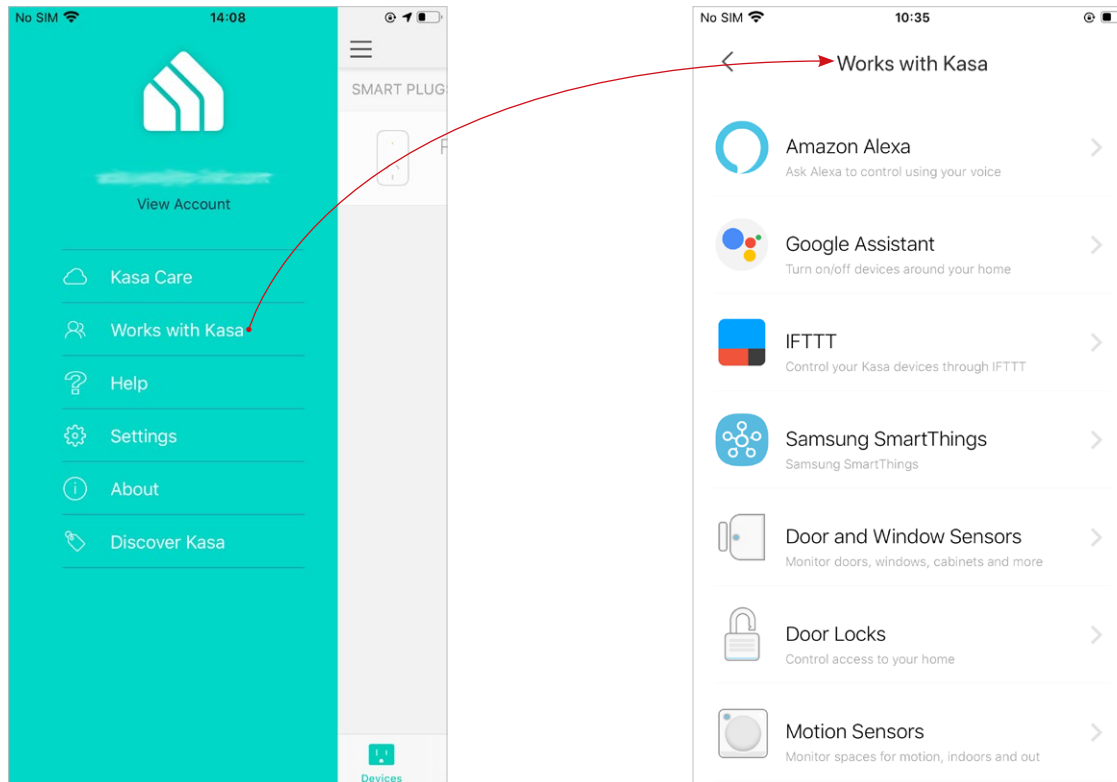
4. The Smart Action is created successfully and displayed in the Smart Actions list.



# Voice & Third-Party Support

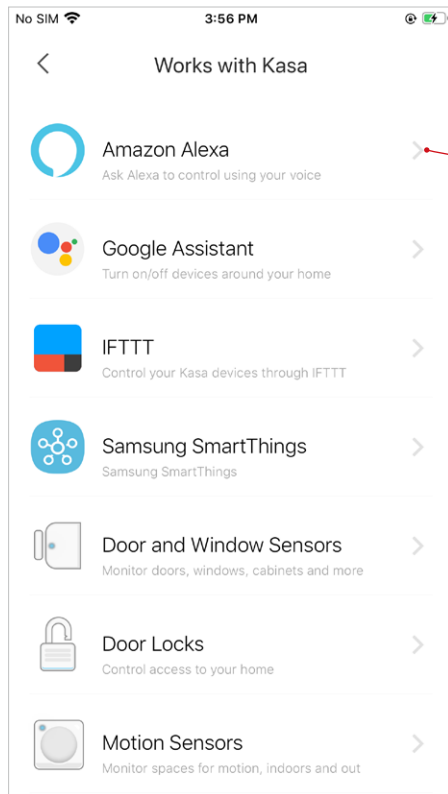
Use the Kasa Smart app to pair your smart Wi-Fi plug with with Amazon Alexa or Google Home Assistant, and enjoy a full hands-free experience. Kasa helps manage the rest of your smart home too, working with Samsung SmartThings to trigger changes when you arrive home or leave for the day.

Launch the Kasa Smart app. Go to the sidebar and tap [Works with Kasa](#). You can choose [Amazon Alexa](#) / [Google Assistant](#) / [IFTTT](#) / [Samsung SmartThings](#) for detailed instructions.

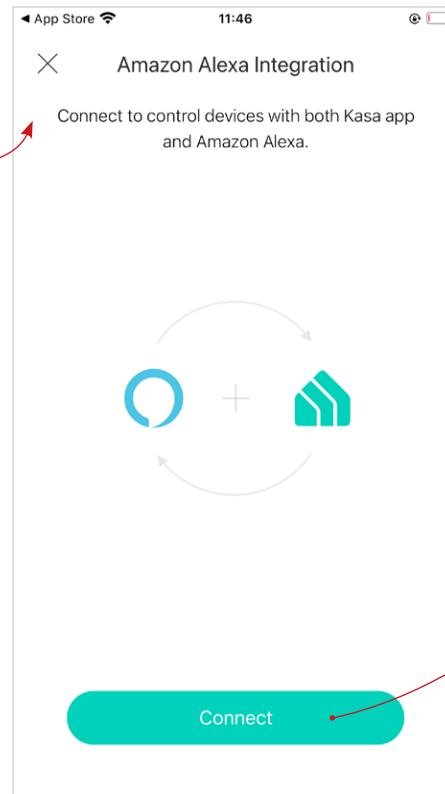


## Set up Amazon Alexa

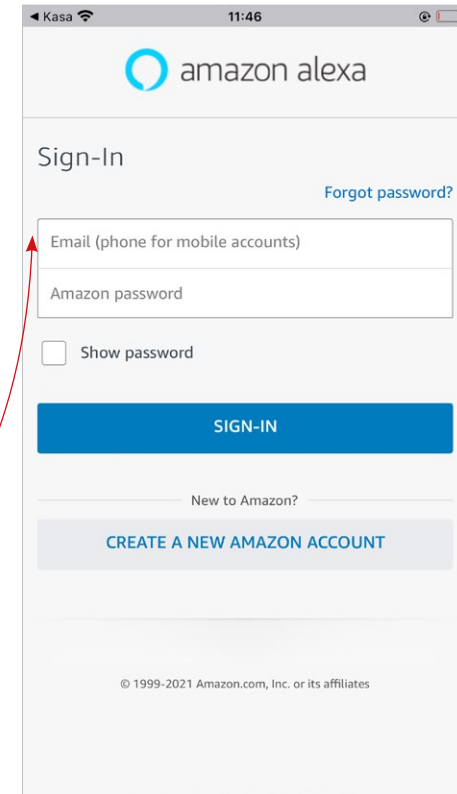
1. Tap **Amazon Alexa**.



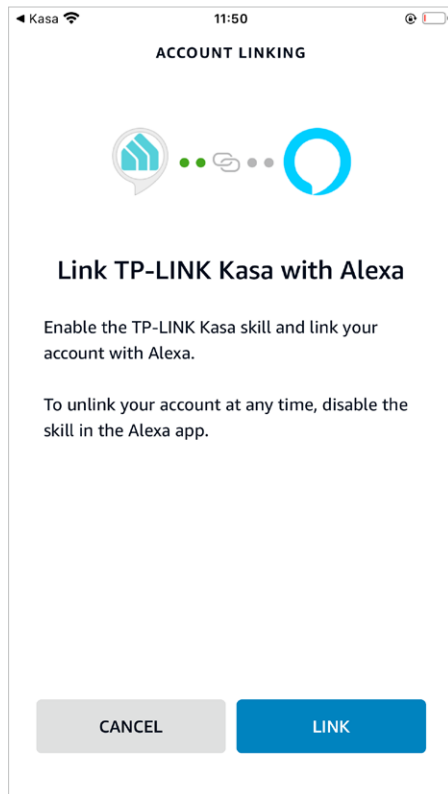
2. Tap **Connect**.



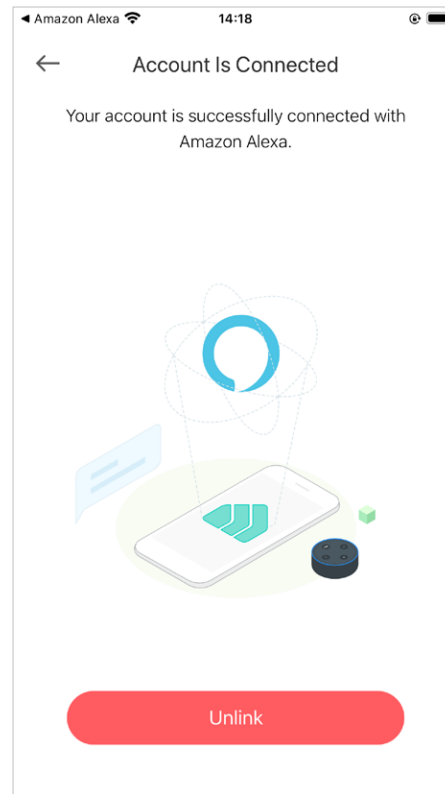
3. Sign in with your amazon account.



4. After sign-in, tap **LINK**.

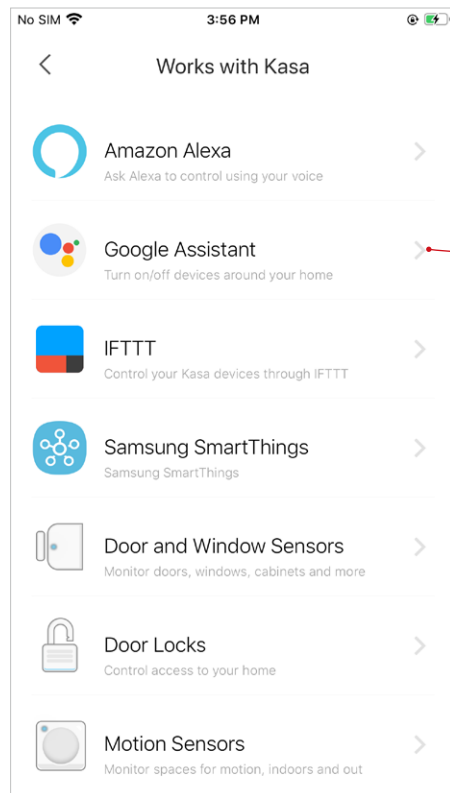


5. Your TP-Link ID has been successfully linked with your amazon account. You can use Alexa voice commands to control your Smart Plug.

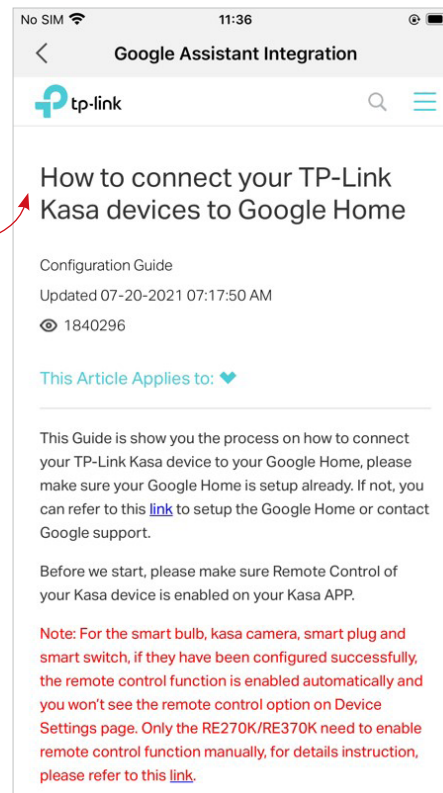


## Set up Google Assistant

1. Tap **Google Assistant**.



2. Follow instructions to connect your device to your Google Home. Or find the FAQ at <https://www.tp-link.com/en/support/faq/1534/>.



# Authentication

## FCC compliance information statement



**Product Name:** Kasa Smart Wi-Fi Plug Slim, Energy Monitoring

**Model Number:** KP115

**Responsible party:**

**TP-Link USA Corporation**

**Address:** 10 Mauchly, Irvine, CA 92618

**Website:** <http://www.tp-link.com/us/>

**Tel:** +1 626 333 0234

**Fax:** +1 909 527 6804

**E-mail:** [sales.usa@tp-link.com](mailto:sales.usa@tp-link.com)

This equipment has been tested and found to comply with the limits for a Class B digital device, pursuant to part 15 of the FCC Rules. These limits are designed to provide reasonable protection against harmful interference in a residential installation. This equipment generates, uses and can radiate radio frequency energy and, if not installed and used in accordance with the instructions, may cause harmful interference to radio communications. However, there is no guarantee that interference will not occur in a particular installation. If this equipment does cause harmful interference to radio or television reception, which can be determined by turning the equipment off and on, the user is encouraged to try to correct the interference by one or more of the following measures:

- Reorient or relocate the receiving antenna.
- Increase the separation between the equipment and receiver.
- Connect the equipment into an outlet on a circuit different from that to which the receiver is connected.
- Consult the dealer or an experienced radio/ TV technician for help.

This device complies with part 15 of the FCC Rules. Operation is subject to the following two conditions:

1. This device may not cause harmful interference.
2. This device must accept any interference received, including interference that may cause undesired operation.

Any changes or modifications not expressly approved by the party responsible for compliance could void the user's authority to operate the equipment.

Note: The manufacturer is not responsible for any radio or TV interference caused by unauthorized modifications to this equipment. Such modifications could void the user's authority to operate the equipment.

### **FCC RF Radiation Exposure Statement**

This equipment complies with FCC RF radiation exposure limits set forth for an uncontrolled environment. This device and its antenna must not be co-located or operating in conjunction with any other antenna or transmitter.

"To comply with FCC RF exposure compliance requirements, this grant is applicable to only Mobile Configurations. The antennas used for this transmitter must be installed to provide a separation distance of at least 20 cm from all persons and must not be co-located or operating in conjunction with any other antenna or transmitter."

We, **TP-Link USA Corporation**, has determined that the equipment shown as above has been shown to comply with the applicable technical standards, FCC part 15. There is no unauthorized change is made in the equipment and the equipment is properly maintained and operated.

Issue Date: 2024-07-11

## CE Mark Warning



This is a class B product. In a domestic environment, this product may cause radio interference, in which case the user may be required to take adequate measures.

## OPERATING FREQUENCY (the maximum transmitted power)

2412MHz—2472MHz (20dBm)

## EU Declaration of Conformity

TP-Link hereby declares that the device is in compliance with the essential requirements and other relevant provisions of directives 2014/53/EU, 2009/125/EC, 2011/65/EU and (EU)2015/863.

The original EU Declaration of Conformity may be found at <https://www.tp-link.com/en/support/ce/>

## RF Exposure Information

This device meets the EU requirements (2014/53/EU Article 3.1a) on the limitation of exposure of the general public to electromagnetic fields by way of health protection.

The device complies with RF specifications when the device used at 20 cm from your body.

Restricted to indoor use.

## UKCA Mark



## UKCA Declaration of Conformity

TP-Link hereby declares that the device is in compliance with the essential requirements and other relevant provisions of the Radio Equipment Regulations 2017.

The original UK Declaration of Conformity may be found at <https://www.tp-link.com/support/ukca>

## Canadian Compliance Statement

This device contains licence-exempt transmitter(s)/receiver(s) that comply with Innovation, Science and Economic Development Canada's licence-exempt RSS(s). Operation is subject to the following two conditions:

(1) This device may not cause interference.

(2) This device must accept any interference, including interference that may cause undesired operation of the device.

L'émetteur/récepteur exempt de licence contenu dans le présent appareil est conforme aux CNR d'Innovation, Sciences et Développement économique Canada applicables aux appareils radio exempts de licence. L'exploitation est autorisée aux deux conditions suivantes :

1) L'appareil ne doit pas produire de brouillage;

2) L'appareil doit accepter tout brouillage radioélectrique subi, même si le brouillage est susceptible d'en compromettre le fonctionnement.

## Radiation Exposure Statement:

This equipment complies with IC radiation exposure limits set forth for an uncontrolled environment. This equipment should be installed and operated with minimum distance 20cm between the radiator & your body.

## Déclaration d'exposition aux radiations:

Cet équipement est conforme aux limites d'exposition aux rayonnements IC établies pour un environnement non contrôlé. Cet équipement doit être installé et utilisé avec un minimum de 20 cm de distance entre la source de rayonnement et votre corps.

## Industry Canada Statement

CAN ICES-3 (B)/NMB-3(B)

## Korea Warning Statements

당해 무선설비는 운용중 전파혼신 가능성이 있음.

## NCC Notice

注意！

取得審驗證明之低功率射頻器材，非經核准，公司、商號或使用者均不得擅自變更頻率、加大功率或變更原設計之特性及功能。

低功率射頻器材之使用不得影響飛航安全及干擾合法通信；經發現有干擾現象時，應立即停用，並改善至無干擾時方得繼續使用。

前述合法通信，指依電信管理法規定作業之無線電通信。

低功率射頻器材須忍受合法通信或工業、科學及醫療用電波輻射性電機設備之干擾。

## BSMI Notice

### 安全諮詢及注意事項

- 請按照本產品注明的電源類型使用本產品。
- 清潔本產品之前請先切斷電源。請勿使用液體、噴霧清潔劑或濕布進行清潔。
- 注意防潮，請勿將水或其他液體潑灑到本產品上。
- 插槽與開口供通風使用，以確保本產品的操作可靠並防止過熱，請勿堵塞或覆蓋開口。
- 請勿將本產品置放於靠近熱源的地方。除非有正常的通風，否則不可放在密閉位置中。
- 不要私自拆開機殼或自行維修，如產品有故障請與原廠或代理商聯繫。

### 限用物質含有情況標示聲明書

設備名稱：Kasa Smart Wi-Fi Plug Slim, Energy Monitoring Equipment name		型號（型式）：KP115 Type designation (Type)				
單元 Unit	限用物質及其化學符號 Restricted substances and its chemical symbols					
	鉛 Lead (Pb)	汞 Mercury (Hg)	鎘 Cadmium (Cd)	六價鉻 Hexavalent chromium (Cr+6)	多溴聯苯 Polybrominated biphenyls (PBB)	多溴二苯醚 Polybrominated diphenyl ethers (PBDE)
PCB	○	○	○	○	○	○
外殼	○	○	○	○	○	○
電源供應板	—	○	○	○	○	○
其他及其配件	—	○	○	○	○	○

備考 1. “超出 0.1 wt %” 及 “超出 0.01 wt %” 係指限用物質之百分比含量超出百分比含量基準值。

Note 1: “Exceeding 0.1 wt %” and “exceeding 0.01 wt %” indicate that the percentage content of the restricted substance exceeds the reference percentage value of presence condition.

備考 2. “○” 系指該項限用物質之百分比含量未超出百分比含量基準值。

Note 2: “○” indicates that the percentage content of the restricted substance does not exceed the percentage of reference value of presence.

備考 3. “—” 系指該項限用物質為排除項目。

Note 3: The “—” indicates that the restricted substance corresponds to the exemption.



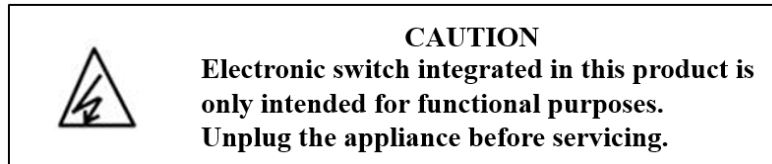
Продукт сертифіковано згідно с правилами системи УкрСЕПРО на відповідність вимогам нормативних документів та вимогам, що передбачені чинними законодавчими актами України.



## Safety Information

- Purpose of control: Operating Control;
- Construction of control: Direct Plug In Type;
- Type 1.B Action;
- Pollution Degree: 2;
- Impulse Voltage: 1500 V;
- Operating ambient temperature;
- Keep this instruction manual (suggestion)
- Degree of enclosure - Type 1 Enclosure
- This product is for indoor device intended for unheated/unoccupied spaces such as garages
- Information required in Marking section but not provided on the device due to limited space.
- Keep the device away from water, fire, humidity or hot environments.
- Do not attempt to disassemble, repair, or modify the device.
- Do not use the device where wireless devices are not allowed.

- The socket-outlet shall be installed near the equipment and shall be easily accessible.
- For passthrough devices, plug the power strips into the integrated electrical sockets of the devices, but devices of the same or another type not be stacked in normal use.
- Nicht hintereinander stecken.



**Supported Load Type:**

**For US Version:**

100-120V~, 50/60Hz, 15A General/Resistive Load;

100-120V~, 50/60Hz, 1/6 HP Motor Load

100-120V~, 50/60Hz, Heater: ≤1500 W

100-120V~, 50/60Hz, Iron: ≤1500 W

100-120V~, 50/60Hz, Toaster: ≤850 W

100-120V~, 50/60Hz, Humidifier: ≤260 W

100-120V~, 50/60Hz, Tower Fan: ≤50 W

Construction of Switch: Micro-Disconnection(μ)

**For EU Version:**

100-240V~, 50/60Hz, 16A max, Resistive Load;

100-240V~, 50/60Hz, 2.5FLA/16LRA\*, Motor Load

Construction of Switch: Micro-Disconnection(μ)

**For UK Version:**

100-240V~, 50/60Hz, 13A max, Resistive Load;

100-240V~, 50/60Hz, 2.0FLA/13LRA\*, Motor Load

Construction of Switch: Micro-gap Switch(μ)

**For AU Version:**

220-240V~, 50/60Hz, 10A max, Resistive Load;

220-240V~, 50/60Hz, 1.6FLA/10LRA\*, Motor Load

Construction of Switch: Micro-gap Switch( $\mu$ )

\*FLA = Full Load Ampere; LRA = Lock Rotor Ampere

**Operating Temperature:** 0 °C~ 40 °C (32°F ~ 104°F )

**Storage Temperature:** -40 °C~ 60 °C (-40°F ~ 140°F )

**Operating Humidity:** 10%~90%RH, Non-condensing

Please read and follow the above safety information when operating the device. We cannot guarantee that no accidents or damage will occur due to improper use of the device. Please use this product with care and operate at your own risk.









## ERP Information













Technical Information	
The trigger that is used to reactivate the equipment	WiFi signal
The (maximum) performance specifications	WiFi: 17dBm
The communication protocol used by the equipment	WiFi: 802.11b/g/n
Power Consumption	
Operating mode	Power consumption(W)
Off-mode condition	No off-mode
Networked standby when wired network ports are connected and all wireless network ports turn off	No wired network ports
Networked standby when all LAN ports are disconnected and wireless network ports are activated	1.2W
Networked standby when all wired network ports are connected and all wireless network ports are activated	1.2W
Power Management	




The default period of time after which the power management function, or a similar function, switches the equipment automatically into a condition providing networked standby	<1 minutes
<b>Possibility of deactivating wireless network connection(s)</b>	
How to activate and deactivate wireless network ports	KP115 rely on a single wireless network connection for intended use and have no wired network connection. This requirement does not apply.

## Explanation of the symbols on the product label

Symbols may vary from products

Symbol	Explanation
	Class II equipment
	Class II equipment with functional earthing
	Alternating current
	DC voltage
	Polarity of output terminals
	Indoor use only
	Dangerous voltage
	Caution, risk of electric shock

Symbol	Explanation
	Energy efficiency Marking
	Protective earth
	Earth
	Frame or chassis
	Functional earthing
	Caution, hot surface
	Caution
	Operator's manual
	Stand-by
	"ON"/"OFF" (push-push)
	Fuse
	Fuse is used in neutral N

Symbol	Explanation
	<p>RECYCLING</p> <p>This product bears the selective sorting symbol for Waste electrical and electronic equipment (WEEE). This means that this product must be handled pursuant to European directive 2012/19/EU in order to be recycled or dismantled to minimize its impact on the environment.</p> <p>User has the choice to give his product to a competent recycling organization or to the retailer when he buys a new electrical or electronic equipment.</p>
	<p>Caution, avoid listening at high volume levels for long periods</p>
	<p>Disconnection, all power plugs</p>
<p>m</p>	<p>Switch of mini-gap construction</p>
<p>μ</p>	<p>Switch of micro-gap construction (for US version) Switch of micro-gap / micro-disconnection construction (for other versions except US)</p>
<p>ε</p>	<p>Switch without contact gap (Semiconductor switching device)</p>