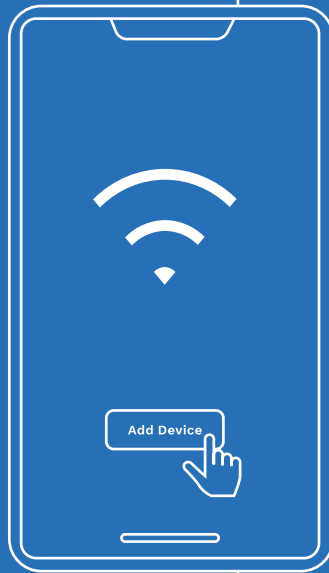


Dehumidifier Pairing Instructions

8 Pint, 25 Pint and
32 Pint



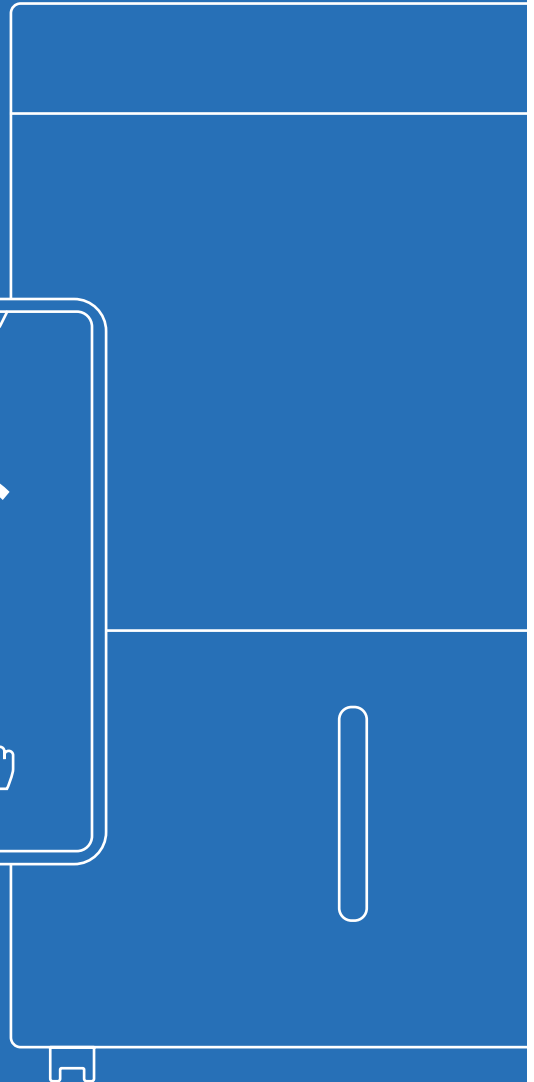
Model Numbers:

HME0088

HME0089

HME0091

Thank you for purchasing our hOmELabs Dehumidifier. Please be sure to read this user manual carefully prior to using this appliance. If you have any product questions, please contact Customer Service at homelabs.com/help or help@homelabs.com



How to Download the App

Make managing your Dehumidifier a breeze with the hOmeLabs smart app! Simply download it from the Apple App store or Google Play store onto your compatible mobile device. Now, enjoy the ease of controlling your device with just a tap.

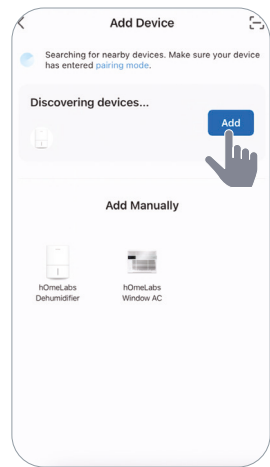
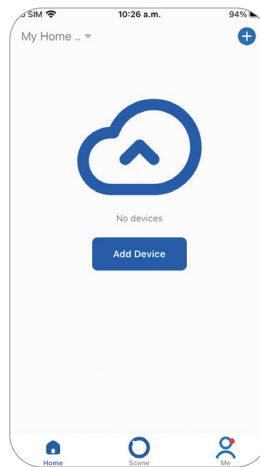
[Get the hOmeLabs App!](#)



How to Pair the Device via Bluetooth

STEP 1 – ADD THE DEVICE

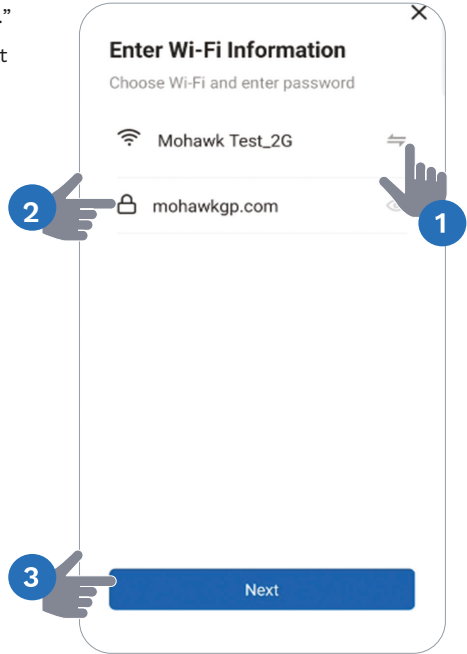
1. Ensure your smartphone's Bluetooth is on. Log in and go to the app's home screen. (If you do not already have an account, you can create one by following the instructions provided within the application.)
2. Turn on the Dehumidifier. Press the Power button for 5 seconds. The letters "AP" or wifi indicator should blink on the display screen.
3. Tap "Add Device" then choose "Add." The app will discover the device automatically within 2 minutes.



STEP 2 – SELECTING AND LOGGING INTO WI-FI NETWORK

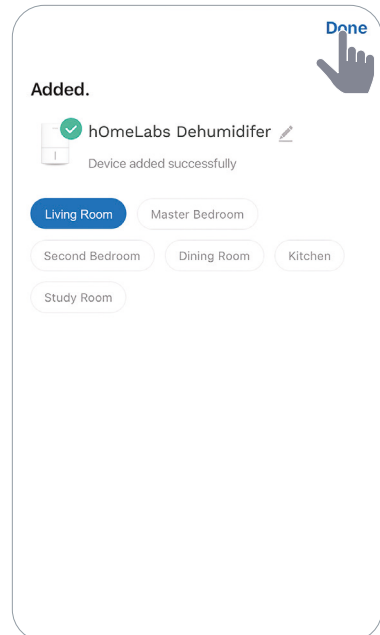
1. Make sure your Wi-Fi network is set on “2.4GHz.”
2. Choose your existing Wi-Fi network from the list and type in your Wi-Fi password.
3. Click “Next.”

NOTE: Have your Wi-Fi password handy.



STEP 3 – FINALIZING THE PAIRING (NAME DEVICE, ADD ROOM)

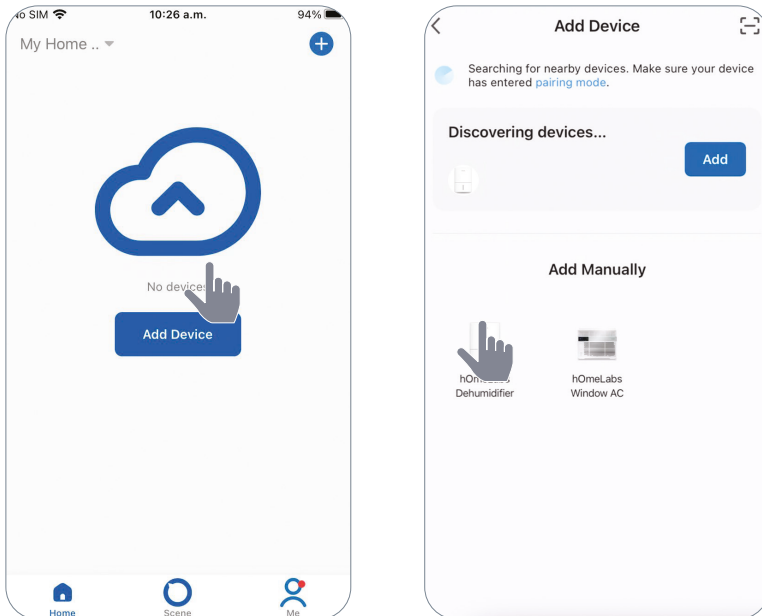
The App will complete the adding device process automatically within 2 minutes.



How to Pair the Device Manually

STEP 1 – ADD THE DEVICE

1. Go to the app's homepage and log in. (If you do not already have an account, you can create one by following the instructions provided within the application.)
2. Tap “Add Device”.
3. Choose “hOmeLabs Dehumidifier” from the list and tap on it.

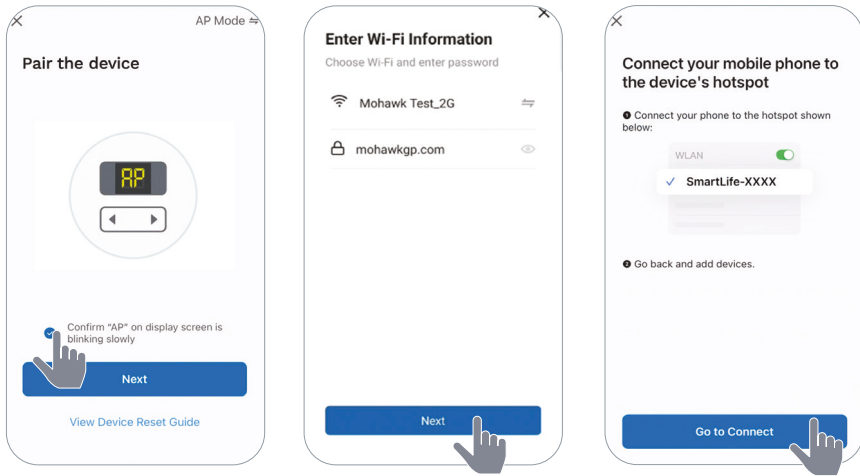


STEP 2 – SELECTING AND LOGGING INTO WI-FI NETWORK

1. Press the Power button on the Dehumidifier Control Panel for 5 seconds to initiate the pairing process. Make sure the letters “AP” or wifi indicator are blinking on the Dehumidifier Control Panel display.
2. On the app, tap “Confirm “AP” on display screen is blinking slowly”.
3. Tap “Next.”
4. Make sure your Wi-Fi network is set on “2.4 GHz.” Tap “Next”.
5. Choose your existing Wi-Fi network from the list and type in your Wi-Fi password.

NOTE: Have your Wi-Fi password handy.

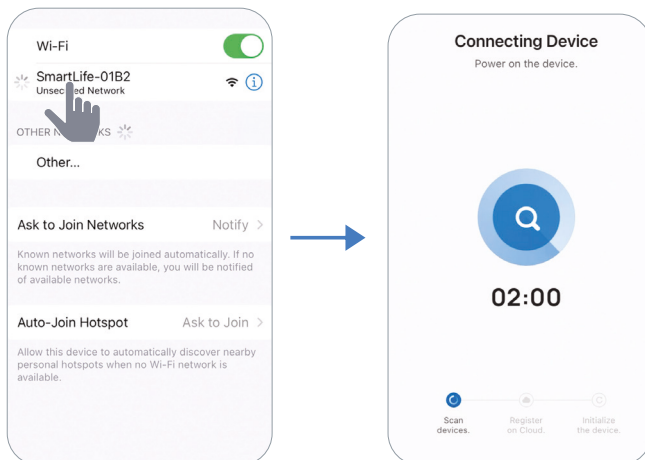
6. Tap “Next”.
7. Tap “Go to Connect”. You will be taken to the device pairing screen. Continue to STEP 3.



STEP 3 – CONNECTING YOUR SMARTPHONE TO THE DEVICE WI-FI

Follow the instructions below to connect your mobile phone to the device’s hotspot. The pairing process should be completed within 3 minutes after resetting the device.

1. Go to “Settings” page of your phone and tap “Wi-Fi.”
2. Select the device’s hotspot “SmartLife-XXXX” (alphanumeric info after “SmartLife-” may vary). (See > [Page 4 for visuals](#))
3. Once the hotspot is connected, tap “hOmELabs” on the top screen OR (depending on your operating system) return to your home screen and locate the app. The app will now be Adding the Device. You will see alternating messages, such as:
 - Ensure that the device is powered on.
 - Ensure that the Wi-Fi signal is good.
 - Ensure that the device is near the router.
4. The status bar will automatically progress from Scan Devices > Register on Cloud to Initialize the Device as the pairing occurs.



STEP 4 – FINALIZING THE PAIRING (NAME DEVICE, ADD ROOM)

Once Added Successfully, select the room. Tap “Done.”

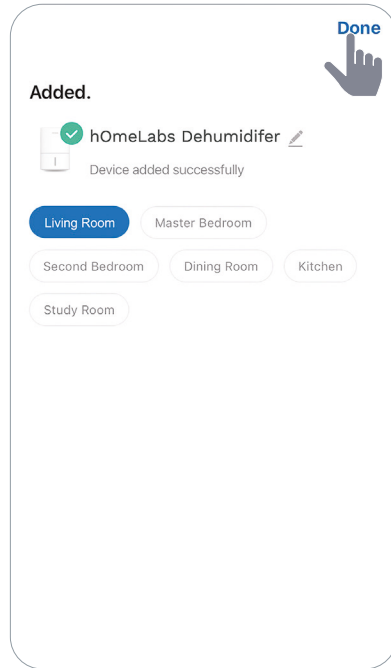
Congratulations! You have paired the device and can now enjoy the hOmeLabs Smart App.

With the hOmeLabs App, you can control your Dehumidifier remotely, and use your Amazon Alexa and Google Assistant to interact with your hOmeLabs smart products through voice commands. (See > [Page 6–7 for voice commands](#))

Features include:

- Turn on/off
- Set the humidity level

NOTE: We may update the app periodically to adjust the features.



Dehumidifier Voice Control

Once your hOmeLabs Dehumidifier is paired with the smartphone app, you can use Alexa or Google Assistant devices to update the Dehumidifier settings. Here are the phrases to use.

TIP: Before using voice control, rename the Device in the app, using either a room assignment or your preferred shorthand (examples: 50 Pint Dehumidifier, Pump Dehumidifier, Living Room Dehumidifier).

ALEXA VOICE CONTROL	
SETTINGS & FEATURES	EXAMPLES OF WHAT TO SAY
Power	“Alexa, turn on <DEVICE NAME>”
	“Alexa, turn off <DEVICE NAME>”
Set the Humidity	“Alexa, set the bedroom humidity to 50”
	“Alexa, set the humidity on the bedroom <DEVICE NAME> to maximum”
	“Alexa, turn up the bedroom humidity”
	“Alexa, decrease the humidity on the bedroom <DEVICE NAME> by 5”

GOOGLE ASSISTANT VOICE CONTROL

SETTINGS & FEATURES	EXAMPLES OF WHAT TO SAY
Power	“OK Google, turn on <DEVICE NAME>”
	“OK Google, turn off <DEVICE NAME>”
Query Humidity	“What is the humidity of <DEVICE NAME>?”
Set the Humidity	“Set the humidity to 50”

NOTE ABOUT PLACEHOLDERS:


- <DEVICE NAME> = insert the name you assigned to the Dehumidifier in the app.
- “bedroom” = insert the name of the room you want to update, as assigned in the app.

Manufacturing Information

This manual covers all items with these model numbers:

HME0088
HME0089
HME0091

Contact Us

 CHAT WITH US

homelabs.com/help

 EMAIL US

help@homelabs.com



For Household Use Only

Distributed by hOmeLabs™, LLC
350 Springfield Avenue, Suite #200,
Summit, NJ 07901

help@homelabs.com
homelabs.com/help

All rights reserved, hOmeLabs™.
Made in China.