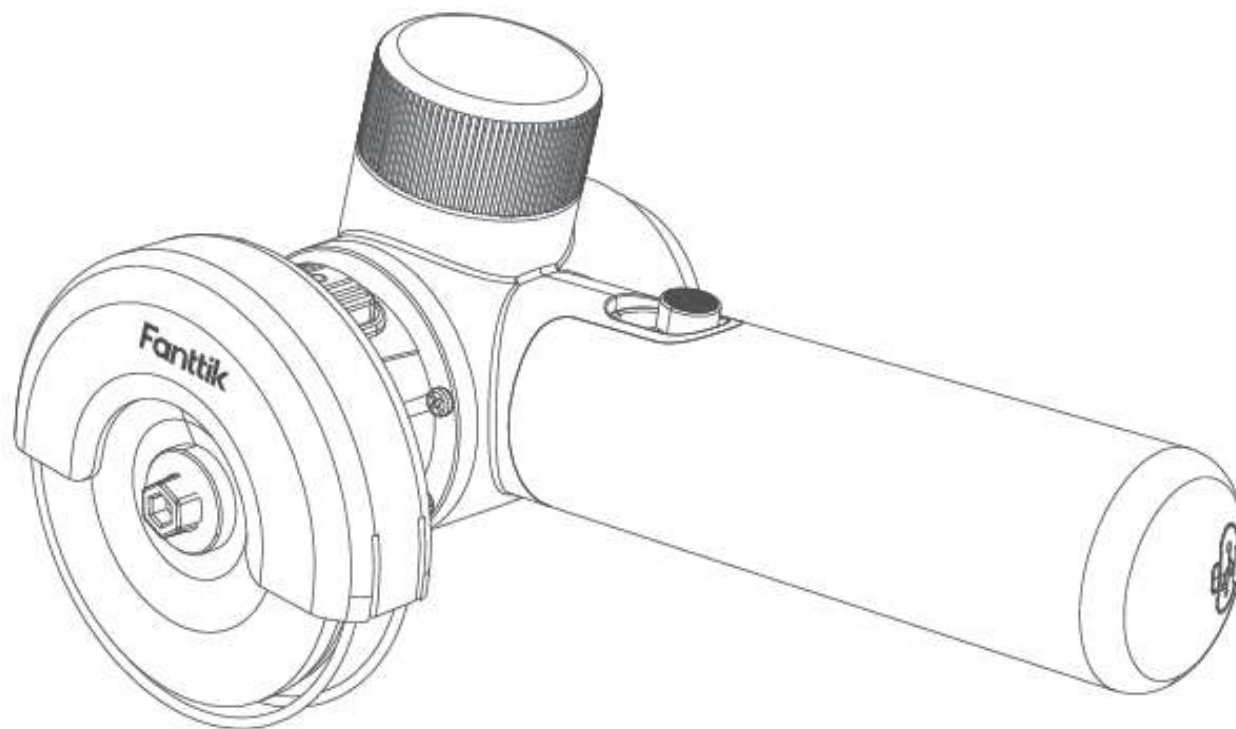


# Fanttik

**M10 ACE** Brushless Cut-off Tool

## User Manual



Please read this instruction manual carefully before use and keep it for future reference.

# Contents

1. Safety Warnings	02
2. Product Overview	03
3. Package Content	04
4. Operation and Functions	05
5. Specifications	10
6. Troubleshooting	11
7. Warranty Info	13

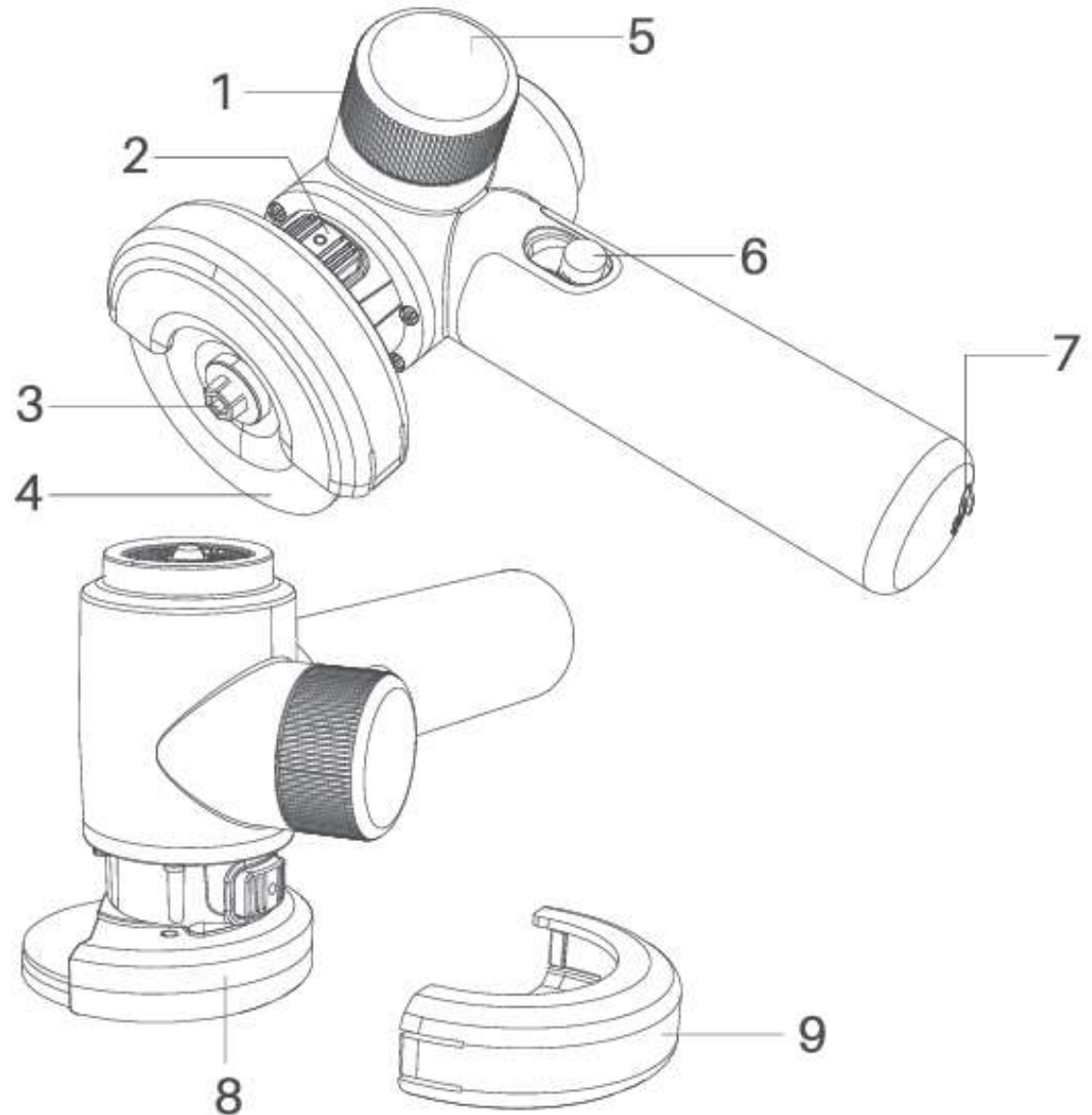


# 1. Safety Warnings

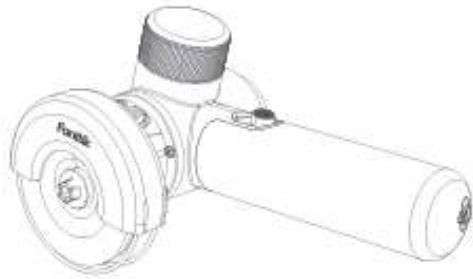
- Avoid moisture, dust, and drop.
- Do not store the product in extreme temperature environment.
- Stay alert, watch what you are doing and use common sense when operating. Do not operate while you are tired or under the influence of drugs, alcohol or medication.
- This product is not a toy and should not be used by kids under 12 years old.
- This product has built-in battery, do not throw it into fire and should be recycled by local laws and regulations.
- Do not dismantle the machine by yourself. Have your power tool serviced by a qualified repair person or contact us for advice.

## 2. Product Overview

- 1.Rotary Button
- 2.Spindle Lock Button
- 3.Locking Nut
- 4.Cutting Disc
- 5.Display Screen
- 6.On/Off Button
- 7.Type-C Charging Port
- 8.Polishing Disc Guard
- 9.Cutting Disc Guard



### 3. Package Content



M10 ACE  
Cut-off Tool \* 1



Metal Cutting  
Disc\* 1



Metal Polishing  
Disc\* 1



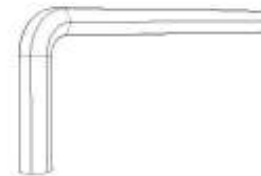
Carbide  
Multi-Material  
Disc\* 1



Tile Cutting  
Disc\* 1



USB charging  
cable\* 1



Hex  
key \* 1



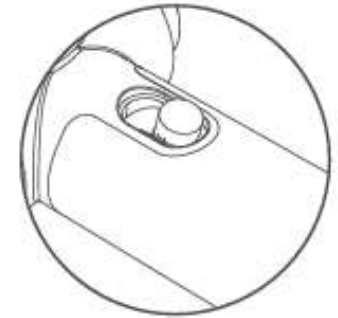
User  
Manual\* 1

## 4. Operation And Functions

The machine is intended for cutting, roughing and brushing metal and stone materials without using water. For cutting metal, the Cutting Disc Guard (accessory) must be used.

### On / Off The Tool

Push forward and press the on/off button to start the machine, and you can cut or polish the workpiece. When you release the button, the machine will stop working.



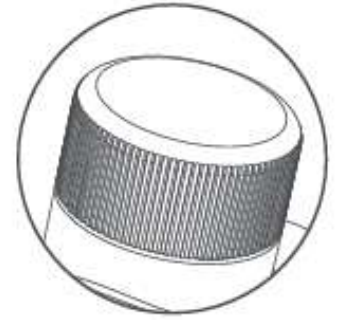
### Charging The Tool

- The device is equipped with a universal Type-C charging port and comes with a USB charging cable. Charger is not included, Please use a 5V charger for charging.
- When the battery is empty, the machine is switched off by means of a protective circuit: the blade will no longer move.
- In a warm environment or after heavy use, the battery pack may become too hot to permit charging. Allow time for the battery to cool down before recharging.



## Gears Changing

The machine is equipped with three different gears, each with a different rotational speed. You can switch gears by rotating the Rotary Button next to the screen.



Gear 1 For  
"Wood/PVC"



Gear 2 For  
"Metal/Tile"



Gear 3 For  
"Polishing"

## Cutting Or Polishing

- Always start at no load to achieve maximum speed then start working.
- Always work with a 15-30 angle between disc and workpiece when grinding. Larger angles will cut ridges into the workpiece and affect the surface finish. Move the angle grinder across and back and forth over the workpiece.
- When using a cutting disc never change the cutting angle otherwise you will stall the

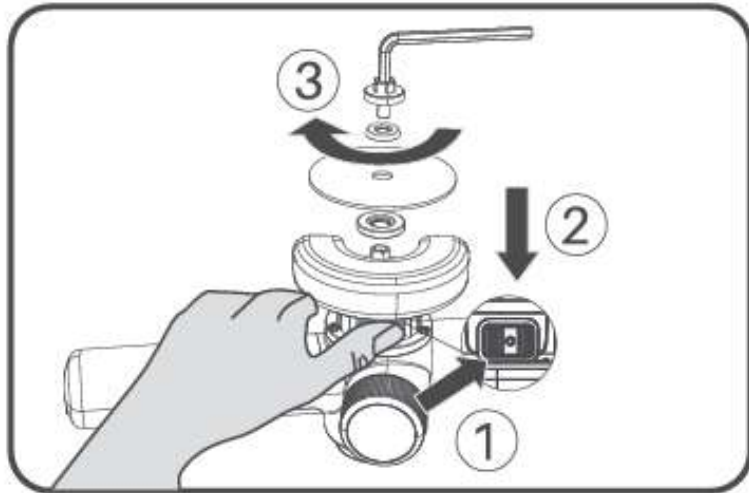
disc and angle grinder motor or break the disc. When cutting, only cut in the opposite direction to the disc rotation. If you cut in the same direction as the disc rotation the disc may push itself out of the cut slot.

- When using a Metal cutting disc it will become very hot. If this happens you will see a full ring of sparks around the rotating disc. Stop cutting and allow to cool at no load speed for 2-3 minutes.
- When cutting rebar, to prevent overheating protection of the battery (E6 error), it is recommended to cut rebar of 8mm or less.
- Always ensure the workpiece is firmly held or clamped to prevent movement

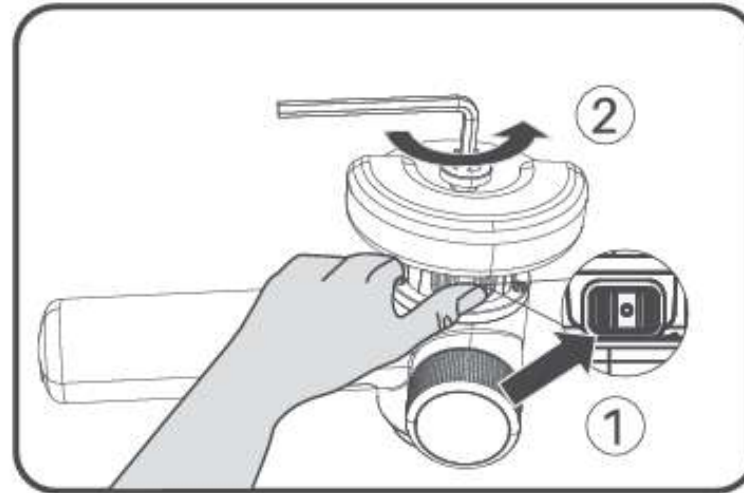
**WARNING:** Never use a cutting disc for rough grinding applications. This can cause bodily damaged by using the tool for wrong applications.

## Disc Replacing

Press and hold the spindle lock button to lock the spindle, Use the hex key to remove the locking nut and replace the disc. Before starting work, please ensure that the disc assembled firmly.



Remove The Disc



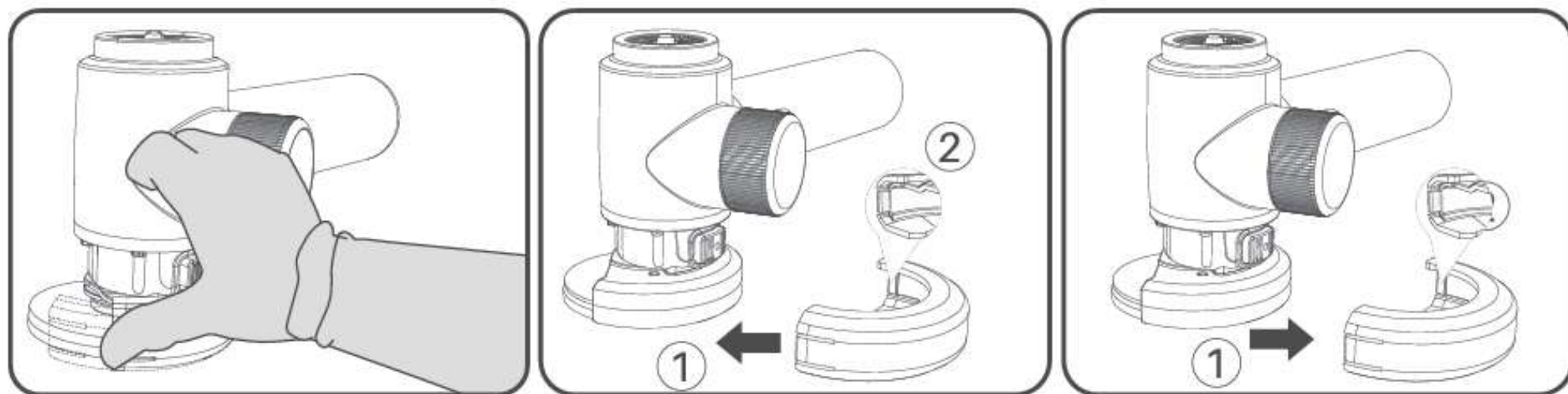
Install The Disc

## The Disc Guard

Only assemble the Metal Polishing Disc for polishing you need remove the Cutting Disc Guard, when using the Metal Cutting Disc/the Carbide Multi-Material Disc/the Tile Cutting Disc, Please ensure that the Cutting Disc Guard is installed on the machine.

Assemble the the Cutting Disc Guard : Grasp one side of the Cutting Disc Guard and press the other side to install the Gaurd onto the Polishing Disc Guard.

Remove the the Cutting Disc Guard :Simply open one side of the buckle to fully remove the entire protective cover.



## 5. Specifications

Product Name	Brushless Cut-off Tool
Product Model	M10 ACE
Product Dimension	8.3x4.9x4.5 inches(210x125x115mm)
Net Weight	840g(1.8lb)
Product Rotation Speed	6000/8000/10000RPM
Max.Cutting Depth	20 mm(13/16inch)
Disc Size	76mm(3inch)
Battery Capacity	2.5Ah
Rated Voltage	7.4V
Charging Input	5 V / 2 A
Charging Time	2H
Working Temperature	14°F-113°F(-10°C-45°C)
Storage Temperature	-4°F-140°F(-20°C-60°C)

## 6. Troubleshooting

### Display Error Codes

The following error codes may appear: E1, E4, and E6 are common, while others occur rarely.

<b>Fault</b>	<b>Cause</b>	<b>Solution</b>
E1	Over-current	Release the switch and restart the machine
E2	Under-voltage	Recharge to restore functionality
E3	Over-voltage	Warranty-Covered Repair for Machine Malfunction
E4	Stalled	Release the switch and restart the machine
E5	Over-temperature	Allow the machine to cool down to resume normal operation
E6	Battery Pack Protection	Recharge or wait for battery temperature to drop
E7	MOSFET Failure	Warranty-Covered Repair for Machine Malfunction
E8	Internal Controller Fault	Warranty-Covered Repair for Machine Malfunction
E9	Short Circuit (Over-current)	Release the switch to reset

## Additional Issues

Fault	Cause	Solution
Charging Failure	High-temperature environment/heavy-duty use, the battery pack may become too hot to permit charging.	Allow the battery to cool before charging
	Battery and charger not properly connected/ Charger not connected to power source	Check charging ports and power connections
Difficulty Installing/Removing Cutting Disc	Spindle lock button not pressed during installation/removal	Keep the spindle lock button pressed and rotate the screw clockwise/counterclockwise with a hex key
Difficulty Installing/Removing Grinding Disc	Cutting guard not detached	Remove the cutting guard: Open the buckle on one side of the guard to remove it
Slow Cutting Speed	Low battery	Charge the machine promptly
	Incorrect speed gear	Select a speed gear matching the material
	Mismatched cutting disc	Use a disc suitable for the material

929-693-6066 MON-FRI 9AM-5PM (ET)

[www.fanttik.com](http://www.fanttik.com)

[support@fanttik.com](mailto:support@fanttik.com)

METASEE LLC

12 GREENWAY PLZ STE 1161A HOUSTON,  
TX 77046-1203

Made in China

