



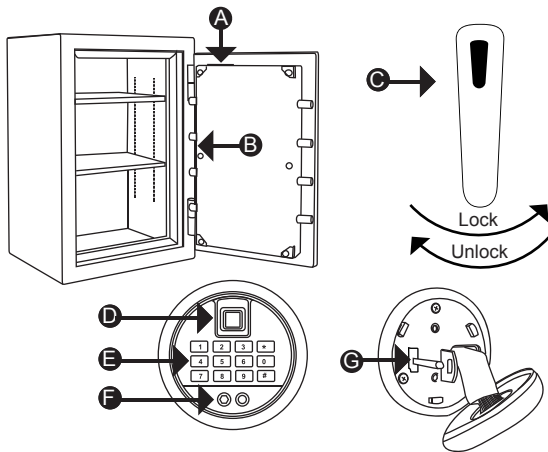
Manual for Biometric Keypad Safe

Read all instructions before using this safe

WARNING

- In Factory Default mode, the safe CANNOT be opened by any fingerprint. For security purposes, please promptly register your own fingerprint before starting to use the safe. The initial Pin Code A: 1234 and Code B:123456. Kindly follow the Fingerprint/Password Set Up to establish your personalized fingerprint/password.
- Safe can be opened by either Fingerprint, Pin code, and /or Emergency Keys.
- Test and Store emergency keys in a secure place, NOT inside of the safe.
- Avoid leaving safe door open and unattended; it will allow unauthorized individuals to add their fingerprints and/or reprogram the safe, gaining full access to the safe and the contents.
- To maximize the security and performance of the safe, test registered fingerprints every 6 months.
- Test and make sure the safe works properly before mounting. Once tested, mount the safe before use.
- Keep children away from safe; they should not play with or around the safe at anytime. Children at play could accidentally pull on the safe or accidentally pull on the safe door causing safe to tip over if not properly mounted.
- Failure to follow these warnings could result in serious injury or death.

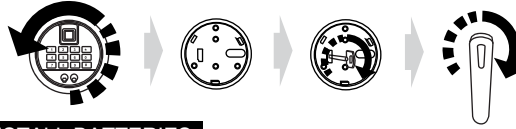
PARTS OF THE SAFE



- A. Battery Compartment
- B. Initialization Button
- C. Handle
- D. Fingerprint Scanner
- E. Keypad
- F. External 9V Battery Source
- G. Emergency Key Access

OPENING SAFE WITH ACCESS KEY

1. To expose the key access, rotate the keypad counter-clockwise smoothly to remove it from the door
2. Insert emergency key into key access and turn clockwise; turn handle to unlocked position and open the safe. Remove key and keep in a secure location.



INSTALL BATTERIES

1. With the door open, remove the battery cover by sliding the cover.
2. Insert 4 AA batteries by lining them up in a manner as indicated by the "+" and "-" signs.
3. Put the arrow of the battery cover align to the arrow on the compartment, slide the batteries cover back into place. Restore the battery compartment cover.

NOTE:

DO NOT use any other type of non-alkaline battery.
DO NOT mix new and old batteries.

External Battery Source

9V battery can be used as an external power source. (9V battery not included) Please remove the bottom black sticker of keypad, then place 9V battery, touch the metal contacts under the fingerprint or pin code mode. Safe should power up, if not switch the polarity of the 9V battery.

LOCK/UNLOCK SAFE

Single Entry Mode

Unlock Safe with Pin Code

1. On the keypad enter registered pin code 4-8 digits and press "#" to confirm. Green light flashes with 2 short beeps.
2. Turn the handle to unlock position to open the safe door.

Unlock Safe with Fingerprint

1. On the scanner place registered fingerprint, green light flashes with 2 short beeps.
2. Turn the handle to unlock position to open the safe door.

Lock Safe

Close door and turn handle to lock position to lock the safe.

FINGERPRINT REGISTRATION

1. With the safe open, press and release initialization button located inside of the safe. Yellow light flashes with 2 short beeps.
2. Immediately place desired finger on fingerprint scanner, yellow light flashes with 2 short beeps. Remove the finger from fingerprint scanner.
3. Repeat step 2 two more times, 1 long beep will be heard. Fingerprint Registration is completed.
4. Fingerprint Registration can be stored up to 20 different fingerprints.

Important: 1 Fingerprint registration required 3 times of placing the finger on the scanner to complete.

Successful Registration

1 long beep will be heard and yellow light will flash off.

Unsuccessful Registration

3 short beeps will be heard.

NOTE:

1. DO NOT choose a fingerprint with a scar or cut.
2. Make sure your hands are clean without dusts.
3. Make sure your finger is flatly placed at the center of fingerprint scanner for better identification.
4. In cold or dry climate conditions, your hands may be too dry, it will affect your fingerprint registration. We recommend to moisturize your hands and rub your fingers before registering.
5. Testing a fingerprint that is not registered to make sure the safe cannot be unlocked to complete the registration process.
6. Please follow the steps " LOCK/UNLOCK SAFE " to test successful registration.

PIN CODES REGISTRATION

Default code A:1234 and Code B:123456

Pin Code can be 4-8 digits

Code A

1. With the safe open, press and release initialization button located inside of the safe. Yellow light flashes with 2 short beeps.
2. On the keypad input new desired Pin Code and press "#" to confirm. 2 short beeps will be heard, Pin Code registration is completed.

Code B

1. With the safe open, Press "00" on keypad.
2. Press and release initialization button located inside of the safe. Yellow light flashes with 3 short beeps.
3. On the keypad input new desired Pin Code and press "#" to confirm. 2 short beeps will be heard, Pin Code registration is completed.

Successful Registration

2 short beeps will be heard.

Important

1. Testing a pin code that is registered to make sure the safe can be unlocked to complete the registration process.
2. Please follow the steps " LOCK/UNLOCK SAFE " to test successful registration

RESET TO FACTORY DEFAULT MODE

Open the safe door and press initialization button for 5 seconds and release, 1 long beep will be heard. The safe is back to factory default mode. Initial Pin Code A:1234/ Code B:123456 ; ; ANY fingerprint CANNOT open the safe.

The sound will be on as it is factory default condition.

Note: If you use Dual Entry Mode (Fingerprint and Pin Code) before resetting. When you Reset Fingerprint Registration, the safe entry will back to Single Entry Mode. Please refer to "SWITCH BETWEEN SINGLE/DUAL ENTRY MODE " to change the entry mode.

SWITCH BETWEEN SINGLE/DUAL ENTRY MODE

With safe open, press " 1 " on the keypad and press initialization button at the same time. When you hear 1 long beep sound, the Single/Dual Entry mode switch successfully.

Important: Dual Entry Mode require BOTH registered fingerprint and pin code to unlock the safe.

UNLOCK SAFE ON DUAL ENTRY MODE

1. Place registered fingerprint on the scanner, green light flashes with 2 short beeps.
2. Within 10 seconds, on the keypad enter pin code and press "#" to confirm, green light flashes with 2 short beeps.
3. Turn the handle to unlock position to open the safe door.

LOCK OUT

Lock out mode is activated when enter wrong Registered Pin Code 3 times or Fingerprint 5 times, the beep sound will last 20 seconds.

You can terminate the lock out mode by entering correct code or fingerprint within the 20 Seconds lock out mode.

SOUND OFF/ ON

Press button " 00★", Sound is disable. Press button " 66★", the sound is active.

Sound off: Lock out/motion sensor alarm is active, only the keypad button and beep sound are disable.

LOW BATTERY WARNING

After entering correct pin code and red light is flashing or sound warning this indicates the batteries are low.

Note: Safe may still be opened in low battery state depending on battery voltage. If safe cannot be opened please use emergency key or external battery source. All registered pin codes and fingerprints remain stored.

MOTION SENSOR ALARM

You can press " ★ " to active motion sensor alarm after locking the safe, once the safe is unlocked, the motion sensor alarm will be off.

If you wish to activate the motion sensor alarm, please press "★" each time after locking the safe.

The sound alarm will be on for 20 seconds if safe has any motion when the motion sensor alarm is active.

You can terminate the alarm by entering correct pin code or fingerprint within the 20 Seconds sound alarm.

If you use emergency key to stop the alarm sound, the motion sensor alarm is still active.

Note: The motion sensor alarm is warning you unattended action.

CARE AND MAINTENANCE

- To maximize the security and performance of the safe, keep Fingerprint Scanner clean; use a dry cloth to remove any smudges or prints off the Fingerprint Scanner after each use.
- Test registered fingerprints and PIN code every 6 months.
- Keep liquids away from the control panel. Spills on the control panel will cause damage and possibly electric shock.
- Secure safe in a proper area to prevent from falling and causing damage or injury.
- DO NOT disassemble the product. For all repairs, contact BARSKA Customer Service.
- DO NOT use chemicals or cleaning agents to clean the safe.

MOUNTING INSTRUCTIONS

The safe may be mounted to the floor. Be aware of the load bearing. Failure to do so can result in personal injury and/or damage to property. Use appropriate tools when performing work and always use eye protection.

Floor Mounting

- Use proper drill tools depending on the type of floor you are mounting the safe (wood, tile, or concrete).
- Measure the location of the pre-set drill holes; mark their exact position onto the floor.
- Drill the appropriate size holes for the anchors you are using.
- Carefully press the anchor into the holes at this time.
- Mount the safe by running screws from inside of the safe and securing to anchors; ensure the safe is mounted securely

Note: All information, feature, and specification displayed herein are based on the data available at the time of publishing, thus they are subject to change without notice. All product pictures displayed herein are for illustration purposes only. The actual product may vary due to different circumstances



1 YEAR LIMITED WARRANTY

SAFE/LOCK BOX

BARSKA warrants this new safe/lock box to be free of defects in material and/ or workmanship under normal use for a period of twelve (12) months from the date product is purchased. This limited warranty is delimited to repair or replacement only. This warranty does not cover damage caused by improper installation or maintenance. BARSKA disclaims all liability for incidental or consequential damages resulting from misuse, abuse, accident (such as dropping), fire, flood, service or repairs other than those performed by BARSKA, acts of nature, or arising out of any breach of this warranty. Altering the product under any circumstances will automatically void the warranty.

For service under this limited warranty, please have available the proof of purchase and the purchase date and location as well as a detailed description of the problem. This warranty is not transferable and only applies to the original purchaser with a proof of purchase from BARSKA or from an authorized dealer. This warranty applies only to products purchased within the United States, excluding Alaska, the Hawaiian Islands and all U.S. territories in the Caribbean and the Pacific.

BARSKA will examine and go through troubleshooting procedures, product repair or replacement of defective part(s) or units with new part(s) or provide a new unit, if necessary, during the warranty period. Reasonable shipping/handling charges may apply and are based on Barska sole discretion. Purchaser shall be required to prepay Shipping/handling charges with a check or money order to BARSKA at time product is returned. The Return Merchandise Authorization Number (RMA#) and shipping/handling charge MUST be obtained from BARSKA in advance of return. BARSKA shall not be liable for damages or loss occurring during shipping. Please visit via www.barska.com or call 909.445.8168 to obtain the RMA#, Shipping/handling amount, and for more information.

BARSKA reserves the right to modify or discontinue, without prior notice to the purchaser, any model or style of the product. BARSKA will determine, at its sole discretion, whether a product will be repaired or replaced. BARSKA reserves the right to discontinue or change any feature of its products at any time. If an exact replacement or product is not available, BARSKA reserves the right to provide a part or product that matches as closely as possible.

LIMITATION OF REMEDIES

BARSKA disclaims any warranties, express or implied, whether of merchantability or fitness for a particular use, except as expressly set forth herein. The sole obligation of BARSKA under this limited warranty shall be to repair or replace the covered product, in accordance with the terms set forth herein. BARSKA expressly disclaims any lost profits, general, special, indirect or consequential damages which may result from breach of any warranty, or arising out of the use or inability to use any BARSKA product. Any warranties which are implied and which cannot be disclaimed shall be limited in duration to a term of one year from the date of original retail purchase.

Some states do not allow the exclusion or limitation of incidental or consequential damages or limitation on how long an implied warranty lasts, so the above limitations and exclusions may not apply to you.

BARSKA
855 Towne Center Drive, Pomona, CA 91767