

User Manual

“Smart LED Bulb”

1- Download and install the App

Install the App by Scanning the QR code or search “Smart Life” in the App Store or Google Play.



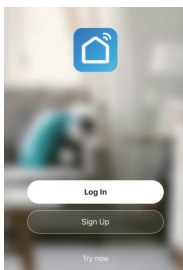
Note:

Alternatively, the “Tuya Smart” App can also be used to configure and control this smart LED bulb. You can set up Tuya Smart App in similar process to “Smart Life” App.

2- Register and log in

Register and sign in the “Smart Life” App with your mobile phone number or Email address.

Note: Please do remember this account and password. They will be used again when paired to Amazon Alexa and Google Home Assistant.



3- Preparations before pairing to the App

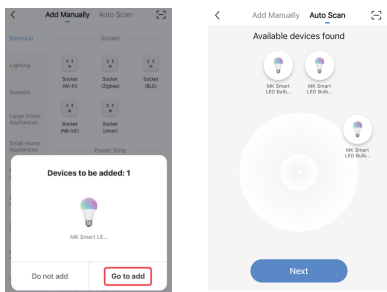
3.1-Install the smart LED bulb to the socket properly.

3.2-Connect your mobile device to the 2.4Ghz Wi-Fi and activate the “Bluetooth” and “Location” function on your mobile device.

4- Connect to the “ Smart Life” App

4.1-Turn on the power switch, the smart LED bulb will flash quickly and stay connection status for 3 minutes. (Please make sure that you finish the pairing process within 3 minutes. If not, you need to reset the bulb by turning the switch ON/OFF/ON/OFF/ON).

4.2-Open the Smart Life App and wait for a while, all the smart LED bulb devices will be automatically searched and pushed by the App, then click “go to add” to add the device.



Tips: If the smart LED bulb is not automatically searched by App, please click on “+” at the top right corner of the “Home” section of Smart Life App and choose “Add Manually” or “Auto Scan” function to search the bulb manually.

4.3-Enter the 2.4Ghz Wi-Fi password and click “Next” button. Once successfully paired, the smart LED bulb will change to steady light, instead of flashing quickly.



Note:

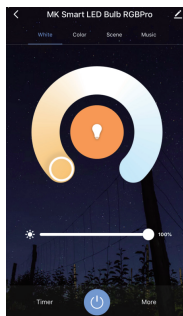
-Make sure the “Bluetooth” “Location” function are activated during the pairing process.
-Once the smart LED bulb connected to the “Smart Life” App, you could control smart LED bulb any time from any place.
-The smart LED bulb could be paired to the App one by one or multiple bulbs to pair to the App together.

5- Control the device via App

Once the smart LED bulb has been successfully paired, its name will appear in the list on the “Home” screen. Now you can control the smart LED bulb via “ Smart Life” App.

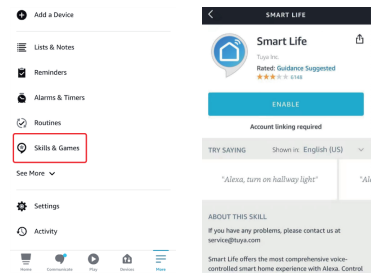
E.g.

1. Dimming the brightness and color temperature
2. Multi-color changing - RGB version only
3. Sleep and Wake up schedule
4. Group control and family share
5. Music sync and more functions

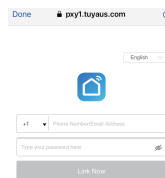


6- Connect to the Amazon Alexa

- (1) Download the Amazon Alexa App in the App Store or Google Play.
- (2) Sign in or register a new account.
- (3) Pair the Alexa App to Amazon Echo device (follow the Amazon Echo user manual).
- (4) Log in your Alexa App, tap “Skills & Games” on the Alexa App menu.
- (5) Search for “Smart Life”, tap “Enable to use” to enable the skill.



- (6) Enter the “Smart Life” App account and password, then tap “Link Now” to link your “Smart Life” account to enable the skill.

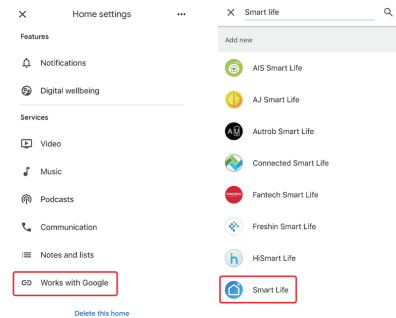


- (7) Now you can control the smart LED bulb with Alexa App or voice control like:

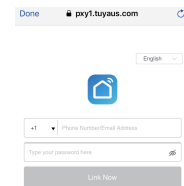
“Alexa, turn on the bedroom light”
“Alexa, set the living room light to blue”
“Alexa, dim the kitchen light”

7- Connect to the Google Home Assistant

- (1) Download the Google Home App in the App Store or Google Play
- (2) Sign in or register a new account
- (3) Pair the Google Home App to Google Home device(follow the Google Home user manual).
- (4) Tap "Settings" on the home page and select "Works with Google".
- (5) Search for "Smart Life" in the list.



- (6) In the new window, select your "Smart Life" account's region and sign in, then tap "Link Now". After you assign rooms for devices, your devices will be listed in the Home page.



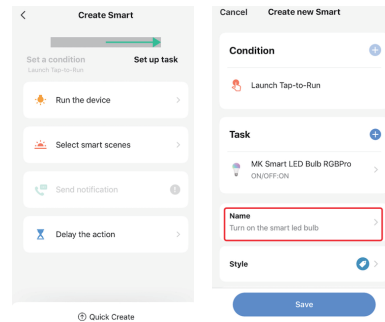
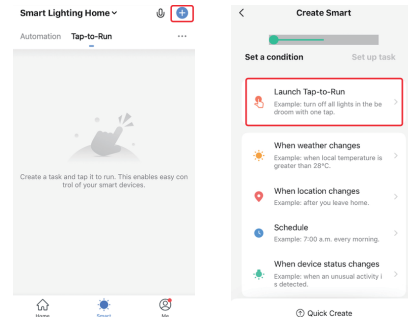
- (7) Now you can control the smart LED bulb with Google Home app or voice control like:
"OK Google, turn on the bedroom light"
"OK Google, set the living room light to blue"
"OK Google, dim the kitchen light"

Tips: You can rename all the smart LED bulbs on "Smart Life" App, like "bedroom bulb", "kitchen light" or others. A simple name is recommended for easier voice recognition with Alexa or Google Home Assistant.

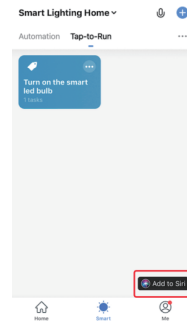
8- Connect to the Siri Shortcuts (iOS 12.0 above)

You can control the "Tap-to-Run" scenarios created on Smart Life with Siri shortcuts.

- (1) Enter the "Smart" section of the Smart Life App and create a new "Tap-to-Run" scenario, then rename it with a word or a phrase.
- (2) Set the actions that the "Tap-to-Run" scenario will have to perform.



- (3) Click on "Add to Siri" on the bottom right of "Smart" section and select the scenario you want on the Siri shortcut page to add.



- (4) Record your personalized phrase you want to use to activate the scenario via Siri. Then Siri can use it to tell Smart Life to run this shortcut. (eg "Hey Siri, light up the room").



If you have any questions about the product, please reach out to our support team via email : tec_support@163.com. We'll reply to you within 24hours .