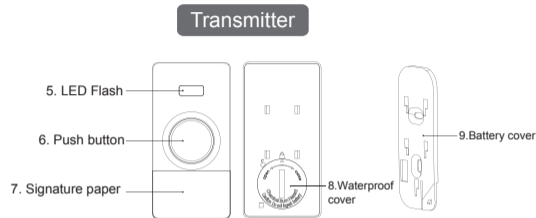
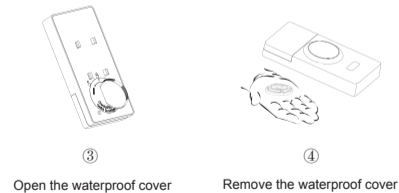
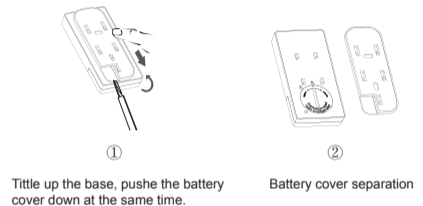


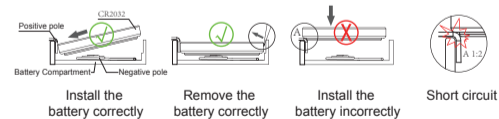
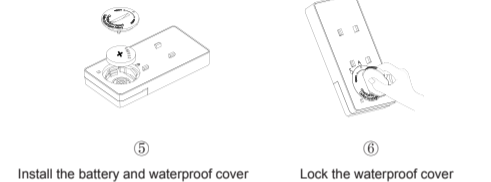
PRODUCT STRUCTURE



BATTERY INSTALLATION

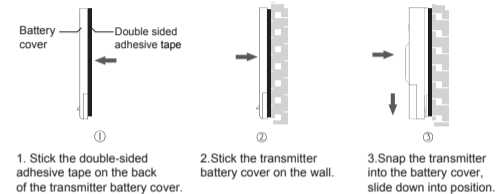


BATTERY INSTALLATION

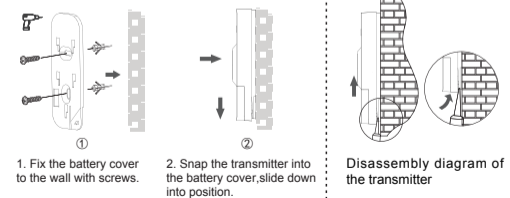


INSTALLATION AND DISASSEMBLY

Method 1: Double-sided tape installation



Method 2: Screw installation



FAULT ANALYSIS AND SOLUTION

| Problem | Possible Cause | Solution |
|----------------------------------|--|---|
| Transmitter light does not shine | Battery voltage is not sufficient | Replace with a new button battery |
| | The installation of batteries is not correct | Remove the CR2032 cell battery and reinstall to ensure good contact |

PRODUCT SPECIFICATIONS



Model: 90111USA
FCC ID:RHT111
Frequency: 433.92MHz
Working temperature: -10°C~55°C
Indicator color: blue
Working voltage: 1x3V CR2032
Standby power consumption: < 5µA
Transmit power: < 5dBm



PRECAUTIONS

FCC Statement

This equipment has been tested and found to comply with the limits for a Class B digital device, pursuant to part 15 of the FCC Rules. These limits are designed to provide reasonable protection against harmful interference in a residential installation. This equipment generates, uses and can radiate radio frequency energy and, if not installed and used in accordance with the instructions, may cause harmful interference to radio communications. However, there is no guarantee that interference will not occur in a particular installation. If this equipment does cause harmful interference to radio or television reception, which can be determined by turning the equipment off and on, the user is encouraged to try to correct the interference by one or more of the following measures:

- Reorient or relocate the receiving antenna.
- Increase the separation between the equipment and receiver.
- Connect the equipment into an outlet on a circuit different from that to which the receiver is connected.
- Consult the dealer or an experienced radio/TV technician for help.

Caution: Any changes or modifications to this device not explicitly approved by manufacturer could void your authority to operate this equipment.

This device complies with part 15 of the FCC Rules. Operation is subject to the following two conditions: (1) This device may not cause harmful interference, and (2) this device must accept any interference received, including interference that may cause undesired operation.

RF Exposure Information

The device has been evaluated to meet general RF exposure requirement.
The device can be used in portable exposure condition, compliance with exposure requirements. This equipment should be installed and operated with minimum distance 0 mm between the radiator & your body.

PRECAUTIONS

| | |
|---|--|
| <h1>⚠ WARNING</h1> | |
| <ul style="list-style-type: none">• INGESTION HAZARD: This product contains a button cell or coin battery.• DEATH or serious injury can occur if ingested.• A swallowed button cell or coin battery can cause Internal Chemical Burns in as little as 2 hours.• KEEP new and used batteries OUT OF REACH of CHILDREN• Seek immediate medical attention if a battery is suspected to be swallowed or inserted inside any part of the body. | |
| Coin-cell Battery Type: CR2032 Nominal Voltage: 3.0Vdc Product use of battery cover is a must. | |

PRECAUTIONS

Pre-installation notes:

1. The wireless signal is easily affected by metals, walls, concrete, etc. (such as mobile phones under the shielding effect of elevators, etc.), and the signal is weakened.
2. Open the package, consider using double-sided tape or screws to install the transmitter.
3. The transmitter should not be installed on the metal door frame, otherwise it will affect the distance.
4. The receiver should be kept as far away as possible from the induction cooker, TV and other places with magnetic fields or signal interference sources.
5. The closer the transmitter and receiver are, the better the signal.

Warn:

1. This product contains a button battery, if swallowed, which can cause severe internal burns within 2 hours and possibly death.
2. Keep new and used batteries away from children.
3. If the battery compartment cannot be closed tightly, please stop using this product and keep it away from children.
4. If you think the battery may have been swallowed or entered any part of your body, seek medical attention immediately.



Transmitter

Model: 90111USA