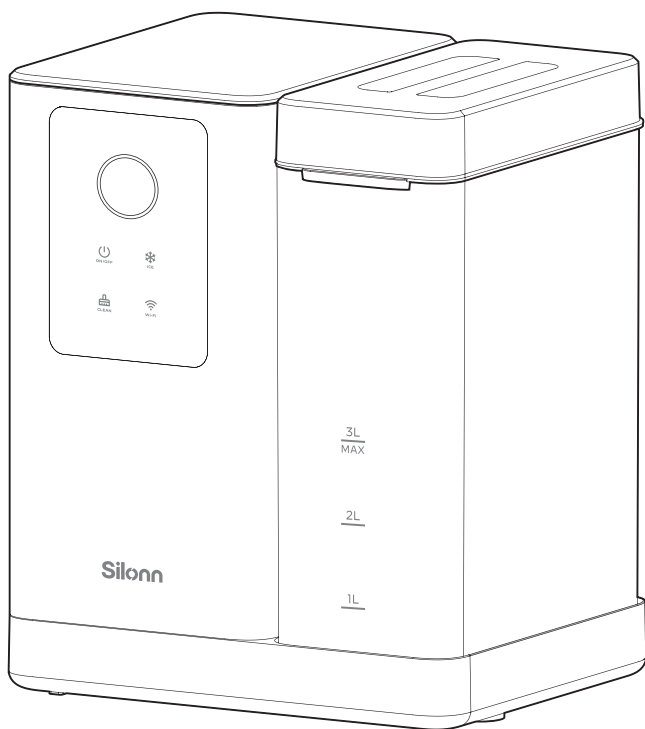


Silonn

Ice Maker



SLIM41



IMPORTANT SAFETY INFORMATION	01
PRODUCT INTRODUCTION	04
CONTROL PANEL INTRODUCTION	06
USING YOUR ICE MAKER	08
CONNECTING TO APP	12
CLEANING AND MAINTENANCE	16
PRODUCT SPECIFICATIONS	19
TROUBLESHOOTING	20
FCC STATEMENT	24
WARRANTY INFORMATION	25

IMPORTANT SAFETY INFORMATION

To reduce the risk of injury or property damage, please follow these safety precautions.



WARNING



- Voltage power from outlet must match specifications on appliance nameplate.



- This appliance **must be** grounded.



- Using an extension cord may cause overheating and increase the risk of fire.

If an extension cord **MUST** be used:

- 1) **Only use an** extension cord with grounding plug.
- 2) The marked rating of an extension cord **must be** equal to or greater than the rating of this appliance.

- **Do not** operate if any component, including the cord or plug, is damaged.
- Unplug the unit before cleaning by hand.



- Only responsible and capable adults should operate the ice maker.
- **Do not** place the power cord where it could be pulled by children or pose a tripping hazard.
- Children should not be left unattended near the ice maker during operation.



- **Do not** use water that is micro-biologically unsafe or of unknown quality.



- **Do not** remove any safety, warning, or product information labels from the unit.



- **Do not** touch the evaporator with your hands while the ice maker is operating.
- **Do not** plug in or unplug the unit with wet hands.



- **Never** put flammable, explosive and corrosive articles into the ice maker.



- The unit **must be** placed and set up according to installation instructions before use. The unit is for indoor household use only.



- **Do not** store or use flammable vapors or liquids near the unit.
- **Do not** immerse any part of the unit in water.



- **Do not** attempt to disassemble, repair, modify or replace any part of the ice maker unless permitted by the manufacturer.



WARNING

FIRE OR EXPLOSION HAZARD Flammable Refrigerant

This unit contains an isobutane refrigerant, also known as R600a, a natural gas with high environmental compatibility. However, it is also combustible. Adhere to the warnings below to reduce the risk of injury or property damage.

WARNING: When positioning the appliance, ensure the supply cord is not trapped or damaged.

WARNING: Do not locate multiple portable socket-outlets or portable power supplies at the rear of the appliance.



1. When handling, installing, and operating the unit, care should be taken to avoid damage to the refrigerant tubing.



2. Keep ventilation openings around the unit's enclosure clear of obstruction.



3. **Do not** place the unit near heat sources such as an oven.



4. Ensure a minimum of 6" of clearance around the side and back walls of the unit for proper air circulation.



5. **Do not** place the unit in direct sunlight.



6. Risk of fire or explosion. Flammable refrigerant used. **Do not** use mechanical devices to defrost the unit. Do not puncture or damage refrigerant tubing.



7. Only dispose of the unit according to Federal and Local Regulations. Contact your local authorities for the environmentally-safe disposal of the unit.

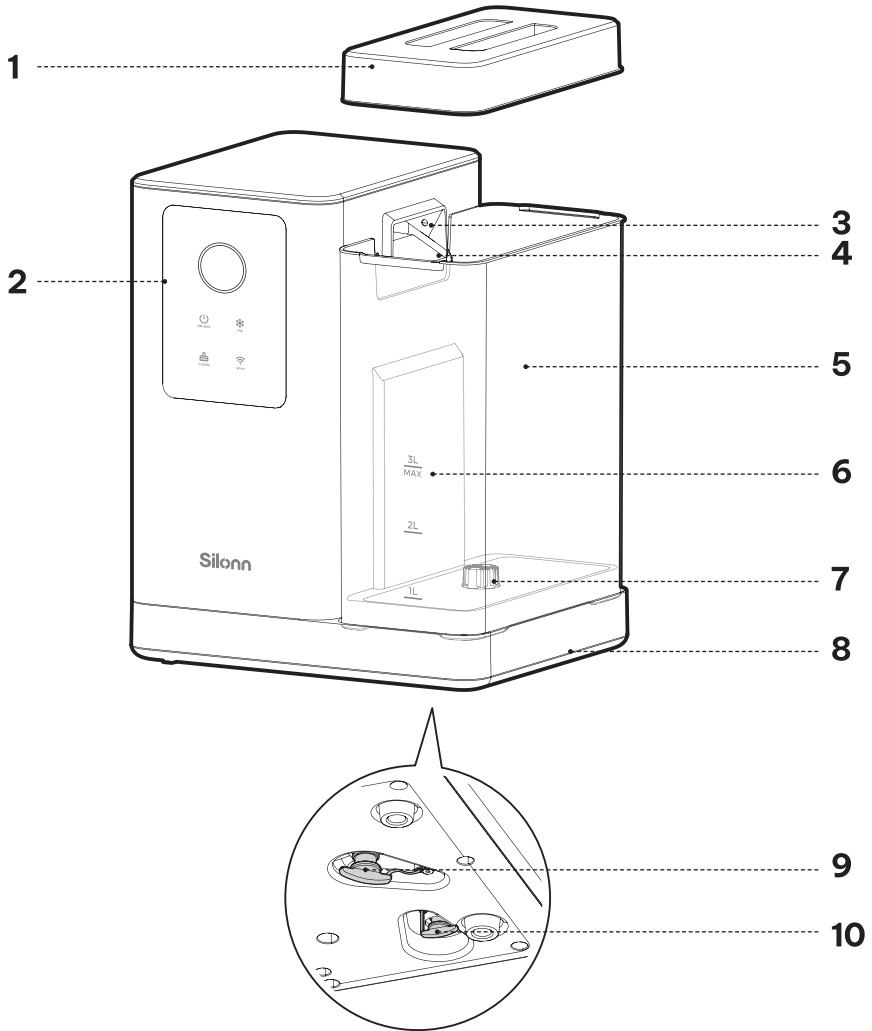


ATTENTION

- The ice maker parts should be replaced with parts that have the same specifications and the maintenance should be done by authorized service personnel, to minimize the risk of fire hazards due to incorrect parts or improper operation.
- The ice maker should be installed in accordance with the Safety Standard for Refrigeration Systems, ASHRAE 15.
- The ice maker should not be installed in hallways or corridors of public buildings.

SAVE THESE INSTRUCTIONS.

PRODUCT INTRODUCTION



1. Water Tank Lid

2. Control Panel

3. Ice Full Sensor

4. Ice Outlet

5. Removable Water Tank

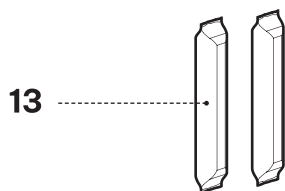
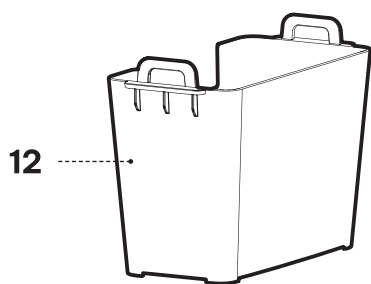
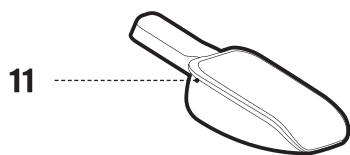
6. Water Fill Line

7. Water Filter

8. Condensation Water Tray

9. Main Drain Plug

10. Condensation Water Tray Drain Plug

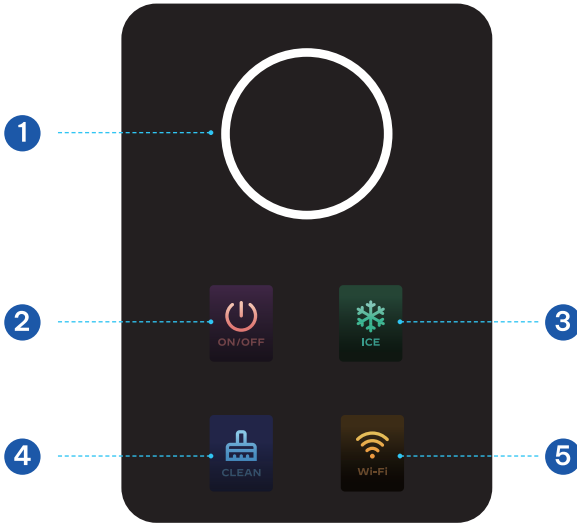


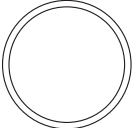
11. Ice Scoop









12. Ice Basket

13. Ice Maker Cleaner

CONTROL PANEL INTRODUCTION



	Icon	Function
<p>1</p>  <p>RING INDICATOR LIGHT</p>		<p>After plugging into power, the ring indicator light flashes white 3 times. The machine enters sleep mode. Note: In sleep mode, all buttons are disabled.</p> <p>The ring indicator light turns white when the machine is making ice.</p> <p>The ring indicator light turns green when the ice basket is full.</p> <p>The ring indicator light turns blue when the machine is in self-cleaning mode.</p> <p>The ring indicator light turns red when the water tank is low.</p> <p>In sleep mode, the indicators of ON/OFF and Wi-Fi turn on.</p> <p>In standby mode, the indicators of all buttons turn on.</p>

	Button	Function
2	 ON/OFF	<p>In sleep mode, press this button to enter standby mode.</p> <p>In standby mode, press this button to return to sleep mode.</p> <p>Note: If the machine is not adjusted to sleep mode during the current use, the machine will enter standby mode after plugged in the next time.</p>
3	 ICE	<p>In standby mode, press this button to enter ice-making mode.</p> <p>In ice-making mode, press this button to stop making ice.</p>
4	 CLEAN	<p>In standby mode, press this button to enter self-cleaning mode. The countdown for self-cleaning is 15min. When the self-cleaning cycle finishes, the machine automatically enters standby mode.</p> <p>Note: In ice-making mode, the self-cleaning program cannot be started.</p> <p>In self-cleaning mode, press this button again to cancel the self-cleaning process. The machine enters standby mode.</p>
5	 Wi-Fi	<p>In standby mode, press and hold this button for 3 seconds to enter network pairing mode with a slow flash Wi-Fi indicator.</p> <p>The app connection is in process with a rapid flash Wi-Fi indicator.</p> <p>The network connection is completed with a steady on Wi-Fi indicator.</p> <p>Press the  ON/OFF button to enter sleep mode, the network connection will not be disabled, with a steady on Wi-Fi indicator.</p> <p>If the Wi-Fi indicator flashes over 2 seconds, the network connection fails. The machine automatically enters standby mode. Repeat the above steps to enable network connection again.</p>
3 + 4	 ICE + CLEAN	<p>Press and hold the  ICE and the  CLEAN buttons together for 8 seconds for a factory reset (Cloud configuration data reset).</p>

USING YOUR ICE MAKER

BEFORE FIRST USE

1.

Verify all parts and ice maker accessories were received.

Missing parts? Contact Customer Service.



Stand upright for 24hrs.



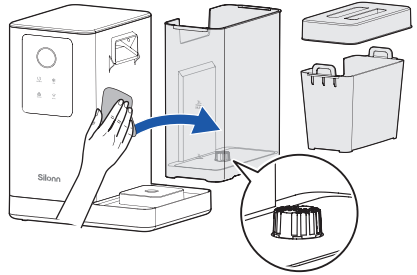
Use in locations
53°F ~ 90°F
(12°C ~ 32°C).



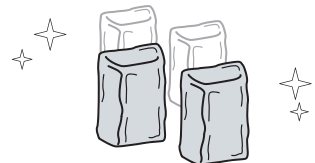
2.

Carefully **remove the protective film** and clean the ice maker thoroughly before first use.

Note: Make sure the drain plug is installed in place.



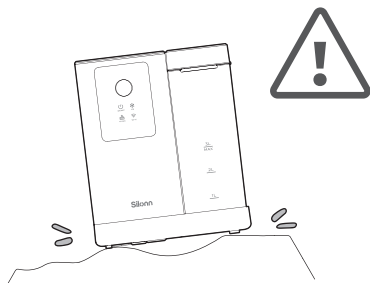
Due to temperature variations and other factors, ice quality should become stable after 5 minutes of continuous ice cube release.



More Cycles = Perfect Shape

3. What Not To Do!

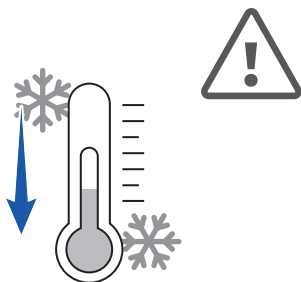
Unstable base.



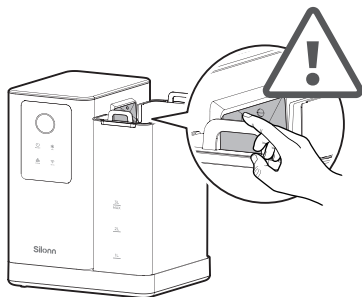
No other liquids
(Drinking water only).



Do not use in high or low temps,
especially **lower than 41°F/5°C.**



Keep fingers away from the ice outlet. The ice maker will detect ice is full and stop working. Wait 5 minutes before further operation.

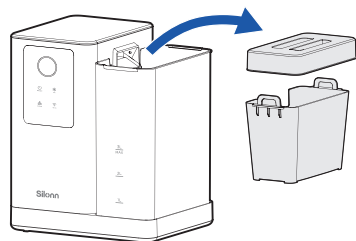


HOW TO USE YOUR ICE MAKER

1.

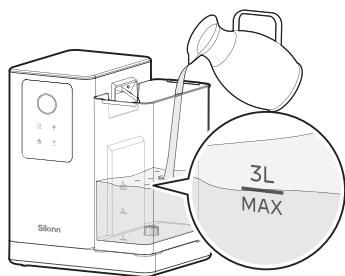
Remove the water tank lid and the ice basket.

Note: Ensure the water tank is installed in place.

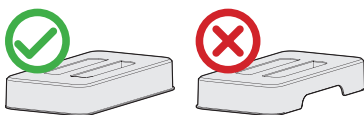


2.

Add water. Do not exceed the “MAX” water line. Then put the ice basket and the lid back into the machine.

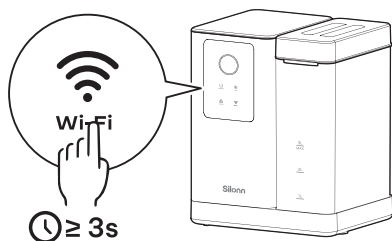


Note: The notch should face the ice outlet.



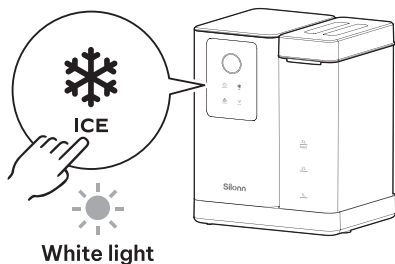
3.

If necessary, use the app for remote control. For more details, go to Page 12 for app connection.



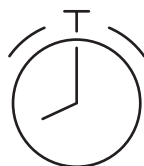
4.

Press the ❄️ ICE button.



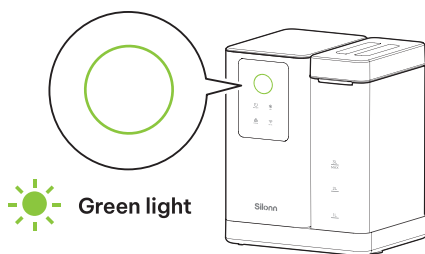
5.

Wait **10min**. The ice-making time depends on room temp and water temp.



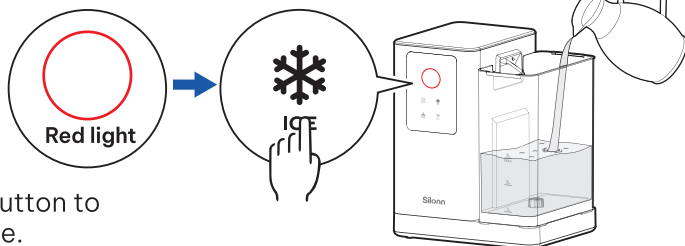
DONE:

The ring indicator light turns green when the ice basket is full.



REFILL:

When the ring indicator light turns red, ice-making will stop. Refill water, then press the ❄️ ICE button to restart the machine.

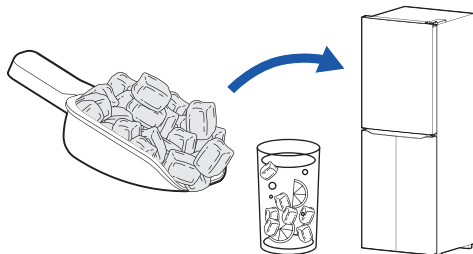


To avoid an ice full false alarm, remove the ice promptly or spread it evenly in the basket to allow normal ice production.



Remove ice cubes before they start to melt.

Some water may drip out when removing the ice basket. Use a dry towel to keep water from dripping on surfaces.



Note:

1. If you restart the machine after an accidental power-off, the compressor protection process will take 5 minutes. In this case, water will come out of the ice outlet. This is normal, so please wait patiently.
2. If the machine works continuously for over 4.5 hours, the 6-minute self-cleaning program will be triggered automatically.

CONNECTING TO APP

Use the app to control your ice maker from your iPhone or Android device even when you are away from home.

1. Download and Install the App

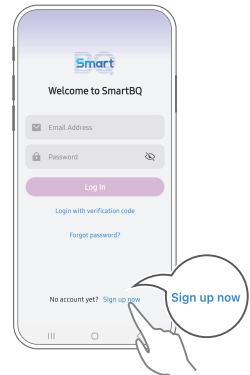
Search for “SmartBQ” in Google Play / App Store or scan the QR code to download the app.

- Android and Google Play are trademarks of Google LLC.



2. Create Your Account

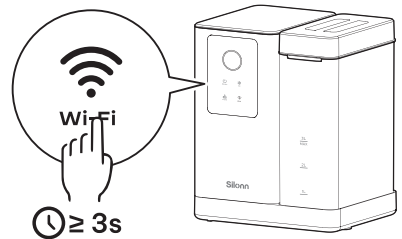
Open the app, sign up, and log in.



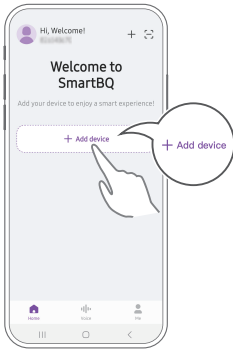
3. Connect to the Ice Maker

1) Ensure the machine is in network pairing mode.

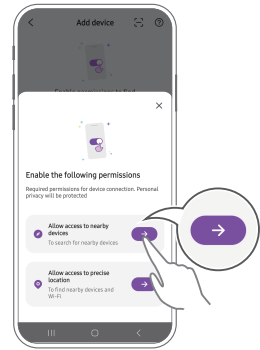
Note: A flashing Wi-Fi icon indicates the ice maker is in network pairing mode. If not, press and hold the  **Wi-Fi** button for 3 seconds to activate it.



2) Tap 'Add device'.

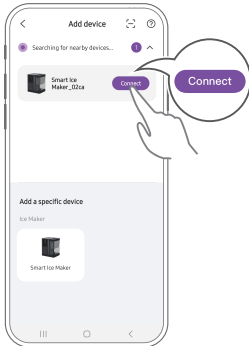


3) Enable device search permissions and search for ice maker.



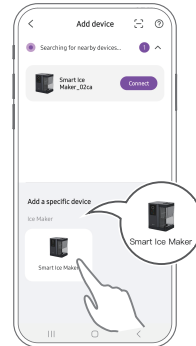
Option A:

Search for nearby devices and connect.



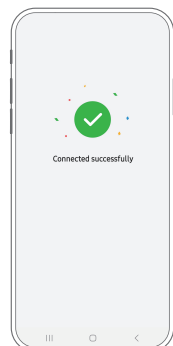
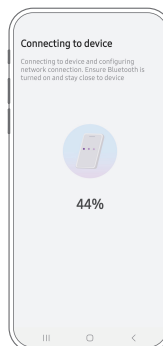
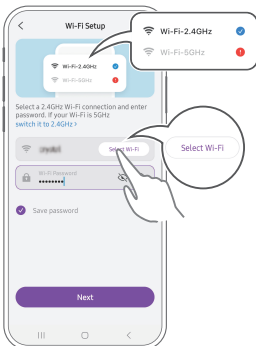
Option B:

Search for a specific device and connect.



4) Connect your device to the network.

Note: This machine currently supports 2.4GHz Wi-Fi networks only. If your Wi-Fi is 5GHz, switch it to 2.4GHz first.



4. Use the App

The image shows two screenshots of the Smart Ice Maker app. The main screenshot displays the home screen with a power button, 'Make Ice' and 'Clean' buttons, a 'Schedule' section with a timer, and 'Notification' and 'Safety Protection' sections. A second screenshot shows the 'Settings' menu with options like 'Device name', 'Voice control', 'Key Tone', 'Notification Settings', 'Help & Support', 'Firmware Update', 'Reset Network Settings', 'About Device', and 'Remove device'.

Ice Making

- In standby mode, press to start making ice.
- In ice-making mode, press to stop making ice.

Timer Group

Notification Settings

Safety Protection Instructions

View Settings

ON/OFF

Press to enter standby mode in sleep mode and vice versa.

Self-Cleaning

- In standby mode, press to enter self-cleaning mode.
- In self-cleaning mode, press to cancel self-cleaning process.

Add Schedule

Custom Device Name

Key Tone Switch

Firmware Upgrade

Remove Device

5. Voice Control (Enabling connection permissions on “SmartBQ” app is required.)

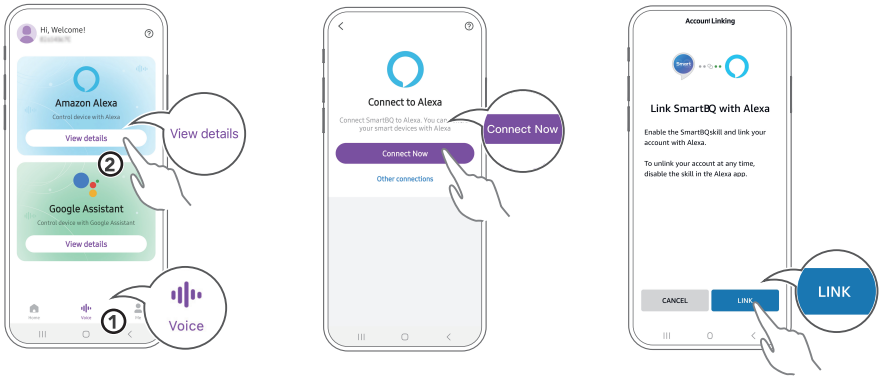
Option A: Amazon Alexa or Google Assistant

Note: This app supports voice control through Amazon Alexa or Google Assistant. To use this feature, an Amazon Alexa or Google Assistant device is required.

Get started with smart voice control by following the steps below:

- 1) Tap ‘Voice’ at the bottom of the screen, and then ‘View details.’
- 2) Tap ‘Connect Now’ to start the connection process.
- 3) Tap ‘LINK’ to connect the SmartBQ app to your Alexa device.

4) Once connected, you can control your ice maker with voice commands like: 'Alexa, set the ice maker to start making ice' or 'Hey Google, set the ice maker to start making ice.' Tap your device in the app to view the full list of supported commands.

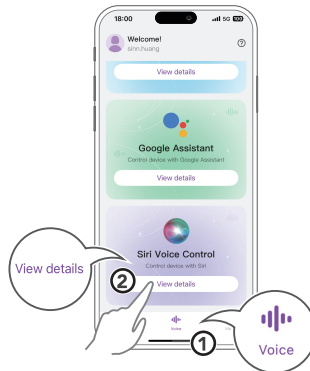


Option B: iPhone Siri

Note: Only iPhone supports voice control by Siri.

Get started with smart voice control by following the steps below:

- 1) Tap 'Voice' at the bottom of the screen, and then 'View details.'
- 2) You can control your ice maker with custom voice commands like: 'Hey, Siri, start making ice.' Make sure to add your custom voice commands to Siri first.



iPhone Siri

* The design & features of the SmartBQ app may vary slightly from that shown above, but the core operation and functions will be similar.

CLEANING AND MAINTENANCE

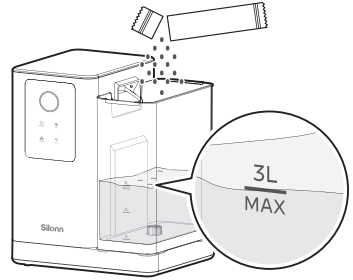
To keep your ice tasting fresh and the unit looking great, we recommend cleaning the unit once per week.

SELF-CLEANING (15-MIN PROCESS)

1.


Mix ice maker cleaner with water following the instructions, then add it to the water tank. Put the water tank lid and ice basket back into the machine.

Note: Water or water/vinegar mixture in a ratio of 5:1 works too. In areas with hard water, leave the detergent in the machine for 12 hours.

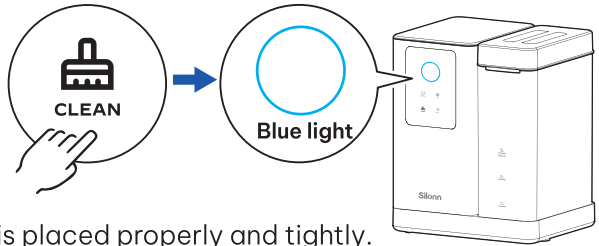


2.

IN STANDBY MODE:

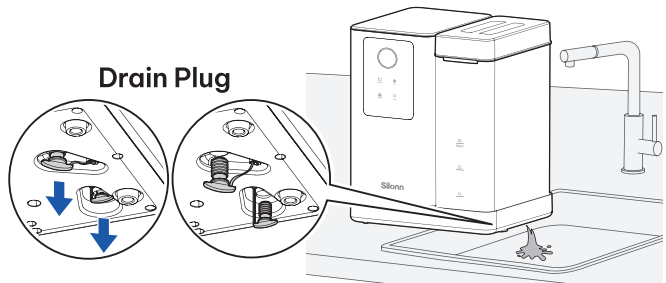
Press the  **CLEAN** button to start self-cleaning.

Before self-cleaning, make sure the ice basket is placed properly and tightly. Otherwise, water leakage may happen during cleaning.



3.

Drain any excess water over the sink. Then repeat the process several times using clean water to ensure the machine is thoroughly cleaned.



4.

Clean the ice basket with warm water, then put it back into the machine.

Wipe the exterior with a cloth using mild dishwashing soap.

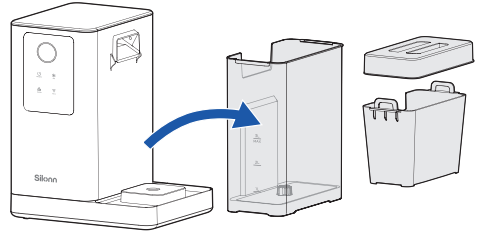


MANUAL CLEANING

Turn off the unit and disconnect from power before cleaning.

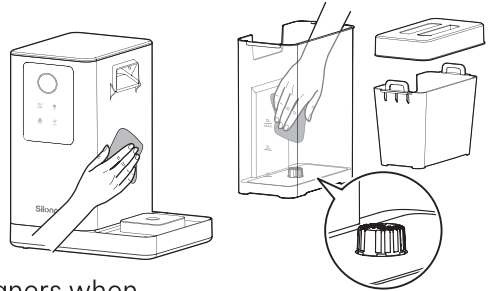
1.

Remove the lid, the ice basket, and the water tank.



2.

Add water/vinegar mixture in a ratio of 5:1, then leave in the water tank for a period of time. Clean the water filter, the ice outlet, the ice basket, and other small corners to prevent dirt build-up.

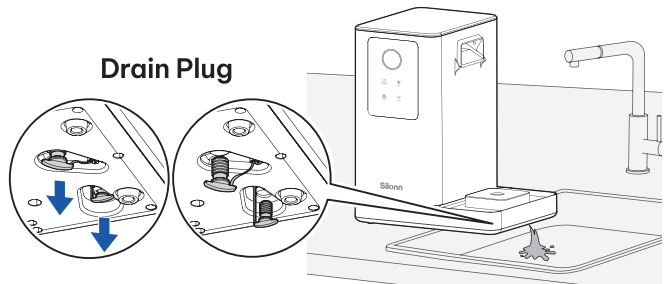


Water Filter

Note: Do not use the supplied cleaners when performing manual cleaning.

3.

Drain any excess water over the sink. Then repeat the process several times using clean water to ensure the machine is thoroughly cleaned.



Drain Plug


4.

Put the parts back into the machine.

Wipe the exterior with a cloth using mild dishwashing soap.






⚠ DO's & DON'Ts while cleaning and maintaining


- **Do not** use organic solvent, boiled water, strong acid and strong alkali etc. for cleaning.
- Considering the wide range of water quality across different regions, it is recommended to perform regular manual cleaning.
- Limescale can easily form if the ice basket is submerged in water for a long period of time. Drain water if the machine is not in use.
- If the machine has been running for **more than 100 hours**, the  **CLEAN** indicator will flash for a self-cleaning reminder. In this case, we recommend running the self-cleaning cycle to **turn off** the indicator.
- It is recommended to **drain the water tank** and **the condensation water tray** at least once every three days.
- When the unit is not to be used for a long duration, **drain** the water completely & dry the interior.
- **Store** in a well-ventilated area.

PRODUCT SPECIFICATIONS

Voltage/Frequency	120V~ 60Hz
Ice-Making Current	1.5A
Working Power	130W
Water Tank	0.8 gal (3L)
Ice Basket Capacity	1.8 lbs (0.8kg)
Ice-Making Rate	40 lbs (18kg) per Day
Ice Shape	Nugget
Material	ABS, PP, Stainless Steel
Net Weight	20.5 lbs (9.3kg)
Product Size	12.3 x 9.9 x 15" (314 x 252 x 380mm)

TROUBLESHOOTING

Problem	Possible Causes	Solution
The ring indicator turns red.	Low water level or not enough water.	Refill water, press the  ICE button, then restart and try again.
	If the ice maker has not been cleaned for a long time, a residue may form around the inlet of the water pump.	Run the self-cleaning cycle using professional ice maker detergent and leave the detergent in the machine for 12 hours to remove scale.
	Float switch malfunction. This may cause the indicator to turn on even if there is water.	Please contact customer service.
	Water pump is damaged.	
The ring indicator turns green.	There is too much ice, or there is ice blocking the ice outlet.	Remove the ice promptly or spread it evenly in the basket.
	Infrared sensors do not work.	Wipe clean the infrared sensors. Contact customer service if the infrared sensors still don't work.
 CLEAN indicator turns on.	The machine has been running for more than 100 hours.	In this case, the  CLEAN indicator will flash for a self-cleaning reminder, which is normal.
Ring indicator flashes alternately.	Water flow malfunction.	Please contact customer service.

Problem	Possible Causes	Solution
 ICE & ON/OFF indicator flashes together.	<p>Machine freezing warning due to prolonged working.</p>	<p>Stop using the ice maker. Unplug the machine, wait for it to warm up, then plug in again and restart.</p> <p>Add water/vinegar mixture and leave the detergent in the machine. Run the self-cleaning cycle and use the machine the next day.</p>
	<p>Machine is frozen and unable to run the cycle safely.</p>	<p>Unplug the machine and wait for the machine's temperature to rise. Restart only after the machine has defrosted.</p>
	<p>Ice maker has worked for over 4.5 hours without pause.</p>	<p>This is normal. The machine automatically performs defrosting to protect components.</p>
<p>Unshaped ice appears.</p>	<p>The added water temperature is higher than the existing water, leading to machine overload.</p>	<p>Remove the ice cubes from the ice basket. Pause the ice maker for 15–30 minutes, then restart it.</p>
	<p>The hot air outlet has been blocked.</p>	<p>Maintain 6" (15cm) of distance between the hot air outlet and the wall.</p>
	<p>Refrigerant leak.</p>	<p>Please contact customer service.</p>

Problem	Possible Causes	Solution
Making ice too slowly.	The hot air outlet has been blocked.	Maintain 6" (15cm) distance between the hot air outlet and the wall.
	The water temperature in the inner tank is too high.	The water temperature should be 45°F - 90°F.
	The refrigeration system is not functioning properly.	Please contact customer service.
Water comes out of the ice outlet.	The machine works continuously for over 4.5 hours.	In this case, the 6-minute self-cleaning cycle will be triggered automatically, which is normal.
	The machine has suffered an accidental power-off.	In this case, the 5-minute compressor protection process will be triggered if the machine is restarted. This is normal.
Water leakage.	The ice basket is not properly placed during the self-cleaning process.	Properly place the ice basket in the designated slot.
	The drain plug is not in place.	Reinstall the drain plug in place.
	The condensation water tray is full.	Unplug the condensation water tray drain plug for water drainage.
	Pipe joints in the appliance may be loose.	Please contact customer service.
	The seal has completed its service life and needs to be replaced.	

Problem	Possible Causes	Solution
Ice maker creating loud noise.	If the ice maker has not been cleaned for a long time, a sticky residue may form around the inlet of the water pump.	Run the self-cleaning program using professional ice maker detergent and leave the detergent in the machine for 12 hours to remove scale.
		Clean every week using mild cleaning agents.
	There is air in the water hose when the machine is trying to pump.	Unplug the drain plug to remove the air.
	Lack of water to pump will create noise when pumping water.	Add more water.
	Machine overload.	The water temperature should be 45°F - 90°F.
		Maintain 6" (15cm) distance between the hot air outlet and the wall.
	The water hoses freeze due to the lower machine temperature.	Remove the ice promptly.
	Fan or ice maker is damaged.	Please contact customer service.
Water pump is damaged.		

This device complies with Part 15 of the FCC Rules. Operation is subject to the following two conditions:

- (1) this device may not cause harmful interference, and
- (2) this device must accept any interference received, including interference that may cause undesired operation.

NOTE: This equipment has been tested and found to comply with the limits for a Class B digital device, pursuant to part 15 of the FCC Rules. These limits are designed to provide reasonable protection against harmful interference in a residential installation. This equipment generates uses and can radiate radio frequency energy and, if not installed and used in accordance with the instructions, may cause harmful interference to radio communications. However, there is no guarantee that interference will not occur in a particular installation. If this equipment does cause harmful interference to radio or television reception, which can be determined by turning the equipment off and on, the user is encouraged to try to correct the interference by one or more of the following measures:

- Reorient or relocate the receiving antenna.
- Increase the separation between the equipment and receiver.
- Connect the equipment into an outlet on a circuit different from that to which the receiver is connected.
- Consult the dealer or an experienced radio/TV technician for help.

Changes or modifications not expressly approved by the party responsible for compliance could void the user's authority to operate the equipment. This device complies with Part 15 of the FCC Rules. Operation is subject to the following two conditions:

- (1) this device may not cause harmful interference, and
- (2) this device must accept any interference received, including interference that may cause undesired operation.

WARRANTY INFORMATION

30-DAY LIMITED WARRANTY

To provide customers with a quality shopping and user experience, the unit can be replaced or returned for a full refund within the 30-day period from the date of purchase.

30-DAY TO 1-YEAR LIMITED WARRANTY

After the 30-day warranty has expired, a 1-year warranty from the date of purchase that covers product replacement is automatically activated. Please note that proof of purchase is required for all warranty claims.

30-DAY TO 1-YEAR WARRANTY LIMITATIONS

This warranty does not cover:

- Any condition resulting from incorrect or inadequate maintenance or care.
- Damage resulting from misuse, abuse, negligence, accidents, or shipping damage.
- Dissatisfaction due to buyer's remorse.
- Normal wear and tear.
- Damages incurred after initial transportation.



Thank You
for Choosing Us!

860-03931-00 V6