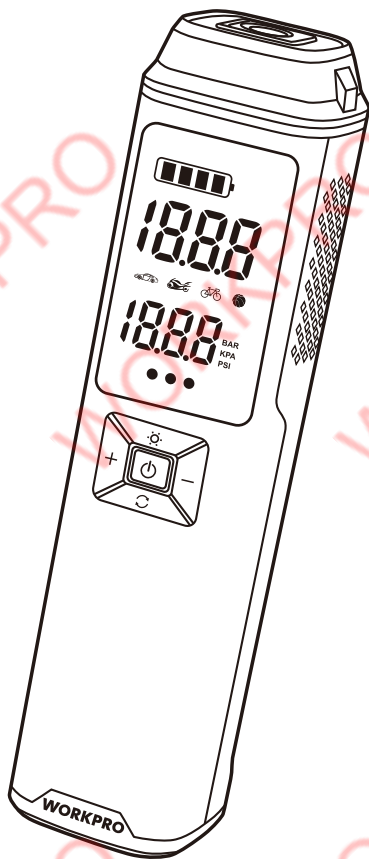














ORIGINAL OPERATING INSTRUCTIONS 12V PORTABLE AIR INFLATOR



Distributed by:
Hangzhou GreatStar Industrial Co., Ltd.
No.35 Jiujuan Road, Jiubao Town,
Hangzhou 310019, China
www.greatstartools.com
Made in China

SYMBOLS

	To reduce the risk of injury, user must read instruction manual
	Wear ear protection
	Wear eye protection
	Do not expose to rain
	Wear protective gloves
	Wear protective footwear
	Do not burn
	Batteries may enter water cycle if disposed improperly, which can be hazardous for ecosystem. Do not dispose of waste batteries as unsorted municipal waste.
	WARNING! Do not direct air stream at persons or pets.
	Risk of bursting
	Safety alert
	Hot surface

Danger!

When using the equipment, a few safety precautions must be observed to avoid injuries and damage. Please read the complete operating instructions and safety regulations with due care. Keep this manual in a safe place, so that the information is available at all times. If you give the equipment to any other person, hand over these operating instructions and safety regulations as well. We cannot accept any liability for damage or accidents which arise due to a failure to follow these instructions and the safety instructions.

1. GENERAL POWER TOOL SAFETY

WARNING

WARNING!

Read and understand all instructions. Failure to follow the warnings and instructions may result in electric shock, fire and/or serious injury.

Save all warnings and instructions for future reference.

The term "power tool" in the warnings refers to your mains-operated (corded) power tool or battery-operated (cordless) power tool.

1) Work area safety

- **Keep work area clean and well lit.** Cluttered or dark areas invite accidents.
- **Do not operate power tools in explosive atmospheres, such as in the presence of flammable liquids, gases or dust.** Power tools create sparks which may ignite the dust or fumes.
- **Keep children and bystanders away while operating a power tool.** Distractions can cause you to lose control.

2) Electrical safety

- **Power tool plugs must match the outlet. Never modify the plug in any way.** Do not use any adapter plugs with earthed (grounded) power tools. Unmodified plugs and matching outlets will reduce risk of electric shock.
- **Avoid body contact with earthed or grounded surfaces, such as pipes, radiators, ranges and refrigerators.** There is an increased risk of electric shock if your body is earthed or grounded.
- **Do not expose power tools to rain or wet conditions.** Water entering a power tool will increase the risk of electric shock.
- **Do not abuse the cord. Never use the cord for carrying, pulling or unplugging the power tool.** Keep cord away from heat, oil, sharp edges or moving parts. Damaged or entangled cords increase the risk of electric shock.
- **When operating a power tool outdoors, use an extension cord suitable for outdoor use.** Use of a cord suitable for outdoor use reduces the risk of electric shock.
- **If operating a power tool in a damp location is unavoidable, use a residual current device (RCD) protected supply.** Use of an RCD reduces the risk of electric shock.

3) Personal safety

- **Stay alert, watch what you are doing and use common sense when operating a power tool.** Do not use a power tool while you are tired or under the influence of drugs, alcohol or medication. A moment of inattention while operating power tools may result in serious personal injury.
- **Use personal protective equipment. Always wear eye protection.** Protective equipment such as a mask, non-skid safety shoes, hard hat or hearing protection used for appropriate conditions will reduce personal injuries.
- **Prevent unintentional starting. Ensure the switch is in the off-position before connecting to power source and/or battery pack, picking up or carrying the tool.** Carrying power tools with your finger on the switch or energising power tools that have the switch on invites accidents.
- **Remove any adjusting key or wrench before turning the power tool on.** A wrench or a key left attached to a rotating part of the power tool may result in personal injury.
- **Do not overreach.** Keep proper footing and balance at all times. This enables better control of the power tool in unexpected situations.
- **Dress properly.** Do not wear loose clothing or jewellery. Keep your hair and clothing away from moving parts. Loose clothes, jewellery or long hair can be caught in moving parts.
- **Do not let familiarity gained from frequent use of tools allow you to become complacent and ignore tool safety principles.** A careless action can cause severe injury within a fraction of a second.

4) Power tool use and care

- **Do not force the power tool.** Use the correct power tool for your application. The correct power tool will do the job better and safer at the rate for which it was designed.
- **Do not use the power tool if the switch does not turn it on and off.** Any power tool that cannot be controlled with the switch is dangerous and must be repaired.
- **Disconnect the plug from the power source and/or remove the battery pack, if detachable, from the power tool before making any adjustments, changing accessories, or storing power tools.** Such preventive safety measures reduce the risk of starting the power tool accidentally.
- **Store idle power tools out of the reach of children and do not allow persons unfamiliar with the power tool or these instructions to operate the power tool.** Power tools are dangerous in the hands of untrained users.
- **Maintain power tools and accessories. Check for misalignment or binding of moving parts, breakage of parts and any other condition that may affect the power tool's operation.** If damaged, have the power tool repaired before use. Many accidents are caused by poorly maintained power tools.
- **Use the power tool, accessories, in accordance with these instructions, taking into account the working conditions and the work to be performed.** Use of the power tool for operations different from those intended could result in a hazardous situation.

- **Keep handles and grasping surfaces dry, clean and free from oil and grease.** Slippery handles and grasping surfaces do not allow for safe handling and control of the tool in unexpected situations.

5) Service

Have your power tool serviced by a qualified repair person using only identical replacement parts. This will ensure that the safety of the power tool is maintained.

6) Battery tool use and care

- Recharge only with the charger specified by the manufacturer. A charger that is suitable for one type of battery pack may create a risk of fire when used with another battery pack.
- Use power tools only with specifically designated battery packs. Use of any other battery packs may create a risk of injury and fire.
- When battery pack is not in use, keep it away from other metal objects like paper clips, coins, keys, nails, screws, or other small metal objects that can make a connection from one terminal to another.

Shorting the battery terminals together may cause burns or a fire.

- Under abusive conditions, liquid may be ejected from the battery; avoid contact. If contact accidentally occurs, flush with water. If liquid contacts eyes, additionally seek medical help. Liquid ejected from the battery may cause irritation or burns.

ADDITIONAL SAFETY INSTRUCTIONS FOR BATTERY CHARGING

- Before charging, read the instructions.
- Recharge only with USB power supply-5V DC.
- Do not charge a leaking battery.
- Do not use chargers for works other than those for which they are specified.
- The charging device must be protected from moisture.
- Do not use the charging device in the open.
- Do not short out the contacts of battery or power supply.
- Do not open the unit and keep out of the reach of children.
- Ensure that the connection between the battery charger and battery is correctly positioned and is not obstructed by foreign matter.
- When charging batteries, ensure that the battery charger is in a well-ventilated area and away from inflammable materials. Batteries can get hot during charging. Do not overcharge any batteries. Ensure that batteries and chargers are not left unsupervised during charging.
- Longer life and better performance can be obtained if the battery is charged when the air temperature is between 18°C and 24°C. Do not charge the battery in air temperatures below 4°C, or above 40°C. This is important as it can prevent serious damage to the battery.

ADDITIONAL SAFETY INSTRUCTIONS RELATED TO BATTERY SAFETY

Charge the tool only with 5V DC power supply, be sure to charge strictly according to the instructions.

Do not charge the battery in a place where static electricity is generated nor let the battery touch something that is statically charged.

The battery can be stored at temperatures between 40°F(4°C) and 104°F(40°C).

Never store or leave your lithium ion battery in temperatures over that recommended otherwise fire may occur.

DO NOT store the Lithium Ion battery anywhere that the temperature can easily reach higher temperatures than recommended -this includes garden type sheds, and Vehicles where the inside temperature can climb to dangerous levels in the direct sunlight and on high temperature days. **THINK BEFORE LEAVING YOUR LITHIUM ION BATTERY PACK IN STORAGE.**

The battery can be charged or operated at temperatures between 40°F(4°C) and 104°F(40°C). **NEVER CHARGE YOU LITHIUM ION BATTERY BELOW OR ABOVE TEMPERATURES RECOMMENDED OTHERWISE FIRE OR SERIOUS DAMAGE TO THE BATTERY PACK MAY OCCUR.**

The most suitable temperatures to charge the battery pack are between 68°F(20°C) -77°F(25°C).

Always allow the battery pack to cool down after charging, do not place it in a hot environment such as a metal shed or open trailer left in the sun.

Take care where the tool is stored. Do not store in areas of corrosive fumes, or salt air or similar conditions. Try and store the tool in the packaging supplied with the tool.

Do not dispose of the battery in a fire or put the battery into a microwave oven, conventional oven, dryer, or high-pressure container. Under these conditions, the battery may explode.

Never attempt to open the battery pack, puncture the battery or subject the battery to strong physical shock.

If you detect leakage or a foul odour, it is especially important to keep the battery away from fire. If battery liquid leaks onto your skin or clothes, wash well with clean water immediately. If liquid leaking from the battery gets into your eyes, do not rub your eyes. Rinse your eyes well (for at least 10 minutes) with clean water, and consult a doctor immediately.

Do not use a leaking battery.

Handle batteries with care to avoid shorting the battery with conducting materials, such as nails, screws, metal watch bands, rings, bracelets, and keys. The battery may overheat and could burn you.

After the battery has reached the end of its useful life, we recommend recycling the materials at your local municipal council recycling centre. DO NOT attempt to replace the battery cells in the battery pack, repair or modify any part of the battery pack assembly.

WHEN TO CHARGE THE BATTERY

New batteries are shipped in a low charged condition and should be fully charged before Use. The battery pack can be

recharged at any time during use, provided the pack is not overheated.

If the battery pack starts to cut out due to low voltage, or previous tasks undertaken can no longer be performed, it is suggested to stop using the tool and recharge the battery.

For storage, it is suggested to recharge the battery between 50% and 75% charge, and charge the device at least once in 3-6 months to preserve battery lifespan.

ADDITIONAL POWER TOOL SAFETY WARNINGS

 **Warning!** Additional safety warnings for air inflator:

- If there is an unusual noise or the temperature becomes very high during inflating, please turn off the inflator immediately.
- The inflator metal parts can be hot after inflating for a while. Do not touch the surface before they have cooled down.
- Before setting the inflation pressure value, make sure the pressure unit is correctly selected. **Mixing up psi and bar could lead to dangerous over inflation.**
- Unit conversion: 1 bar=14.5psi, 1 bar=100KPa
- DO not leave the inflator unattended while it is in operation.
- The intended use is described in this instruction manual. The use of any accessory or attachment or performance of any operation with this tool other than those recommended in this instruction manual may present a risk of personal injury and/or damage to property.

Safety of Others

- Never allow children, persons with reduced physical, sensory or mental capabilities or lack of experience and knowledge or people unfamiliar with these instructions to use the machine, local regulations may restrict the age of the operator.
- Never operate the machine while people, especially children, or pets are nearby.

Residual Risks

Additional residual risks may arise when using the tool which may not be included in the enclosed safety warnings. These risks can arise from misuse, prolonged use etc.

Even with the application of the relevant safety regulations and the implementation of safety devices, certain residual risks can not be avoided. These include:

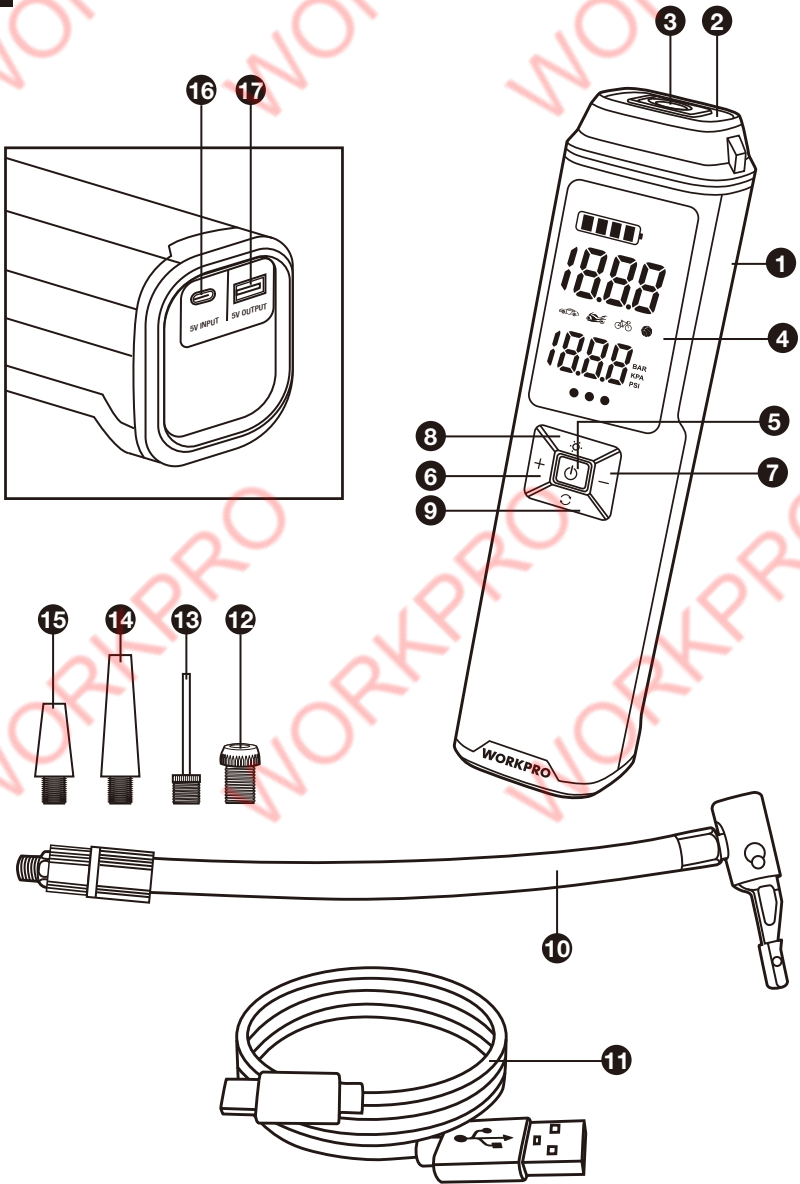
- Injuries caused by touching any rotating/moving parts.
- Injuries caused when changing any parts or accessories.
- Injuries caused by prolonged use of a tool. When using any tool for prolonged periods ensure you take regular breaks.
- Impairment of hearing.

2. LAYOUT AND UNPACKING

2.1 Layout (Fig. 1)

1. Air inflator
2. LED light
3. Air outlet
4. LED screen
5. Switch button
6. Pressure increase button
7. Pressure decrease button
8. Light button
9. Mode button
10. Air hose
11. USB-C charging cable
12. Presta to Schrader valve adaptor
13. Needle valve adaptor
14. Tapered valve adaptor
15. Short tapered valve adaptor
16. USB-C DC input port
17. USB-A DC output port

Fig. 1



2.2 Items supplied

Please check that the article is complete as specified in the scope of delivery. If parts are missing, please contact our online service center.

- Open the packaging and take out the equipment with care.
- Remove the packaging material and any packaging and/or transportation braces (if available).
- Check to see if all items are supplied.
- Inspect the equipment and accessories for transport damage.
- If possible, please keep the packaging until the end of the guarantee period

⚠ Danger!

The equipment and packaging material are not toys. Do not let children play with plastic bags, foils or small parts. There is a danger of swallowing or suffocating!

3. PROPER USE

With LED screen and easy-to-use interface, the portable air inflator is ideal for inflating car, motorbike, bicycle, ball and air bed. It cannot be used for other purposes.

4. TECHNICAL DATA

Battery capacity	2500mAh
Battery voltage	Maximum 12V, Nominal 10.8V
Charging voltage	Input 5V/2A (USB-C) Output 5V/2A (USB-A)
Charging time	Approx. 5 hours
Weight	0.9kg (1.98lbs)
Pressure range	3-150psi/0.2-10.3Bar
Pressure accuracy	≤ 1.5psi (3-100psi) ≤ 2psi (100-150psi)
Air flow	20L/min
Operating temperature	Charging: 0~45°C (32°F~113°F) Discharging: -20~45°C (-4°F~113°F)

👂 Wear ear-muffs.

The impact of noise can cause damage to hearing.

Keep the noise emissions and vibrations to a minimum.

- Only use appliances which are in perfect working order.
- Service and clean the appliance regularly.
- Adapt your working style to suit the appliance.
- Do not overload the appliance.
- Have the appliance serviced whenever necessary.
- Switch the appliance off when it is not in use.
- Wear protective gloves.

⚠ Caution!

Residual risks

Even if you use this electric power tool in accordance with instructions, certain residual risks cannot be ruled out. The following hazards may arise in connection with the equipment's construction and layout:

- Damage to hearing if no suitable ear protection is used.
- Health damage caused by hand-arm vibrations if the equipment is used over a prolonged period or is not properly guided and maintained.

5. ASSEMBLY

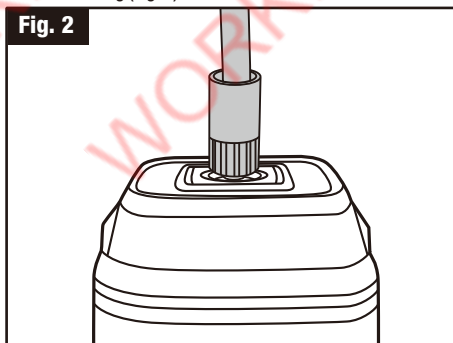
⚠ WARNING: Do not use this product if it is not completely assembled or if any parts appear to be missing or damaged. Use of a product that is not properly and completely assembled or with damaged or missing parts could result in serious personal injury.

5.1 Connecting the air hose and inflation adaptor (Fig. 2-3)

Insert air hose with black rubber protector end into air outlet on the appliance and screw it up, then connecting air hose the other end with inflation adaptor before inflating.

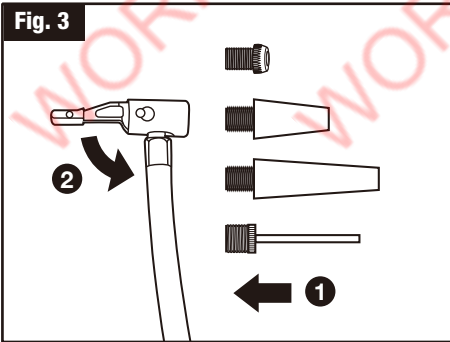
Schrader valve adaptor

Tires on car, motorbike, e-bike and most mountain bikes use a Schrader valve. Inflator air hose can be directly connected to tires for inflating. (Fig. 2)



Presta to Schrader, Needle and Tapered valve adaptor

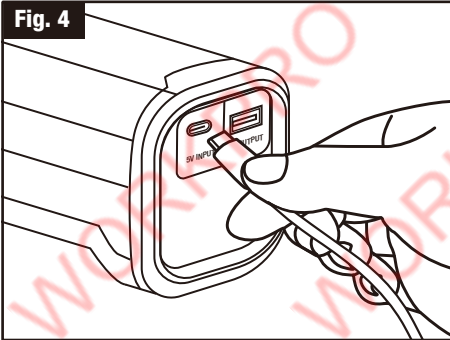
To inflate road bicycles and certain mountain bicycles Presta to Schrader valve adaptor will be used. Balls like basketball, volleyball, football which requires the needle valve adaptor. Air bed, swimming ring need tapered valve adaptor for inflating. To screwing the inflation adaptor separately onto the air hose without protector end before inflating. (Fig. 3)

Fig. 3

6. BEFORE STARTING THE EQUIPMENT

6.1 Charging the battery

Connect to power supply (DC 5V), it can be any mobile phone charger or USB port of the computer or power bank (output 5V DC). (Fig. 4)

Fig. 4

According to supply output current, the battery will take approximately 5 hours to charge by USB-C DC input port charging.

- To ensure that the battery pack provides long service, you should take care to recharge it promptly.
- You must recharge the battery pack when you notice that the power of the air inflator drops. Never fully discharge the battery pack. This will cause it to develop a defect.

⚠ WARNING:

The switching devices installed on the tool by the manufacturer are not allowed to be removed or bypassed, e.g. by fitting a switching button on the side of the inflator, as this may result in risk of injury and the tool will no longer switch off automatically.

6.2 Battery capacity indicator (■■■■)

Battery capacity indicator indicates the remaining condition of the battery when using the inflator.

The battery capacity is shown by four bars, with each bar representing 25%

LED	Meaning
1 bar	under 25%
2 bars	25%-50%
3 bars	50%-75%
4 bars	75%-100%

Note: The battery capacity indicator will flash when the power is under 5%.

Charging

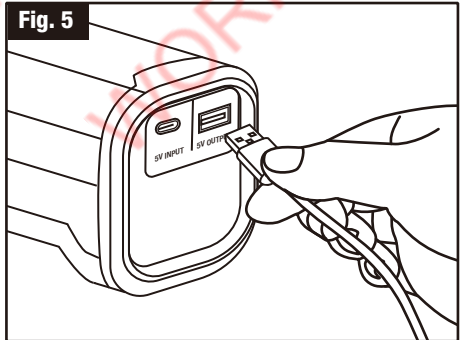
Battery capacity indicator also indicates the charging condition of the battery.

LED	Meaning
4 bars continuous flash	under 25%
1 bar solid, 3 bars continuous flash	25%-50%
2 bars solid, 2 bars continuous flash	50%-75%
3 bars solid, 1 bar continuous flash	75%-100%
4 bars solid	Fully charged

6.3 Power bank function

When the air inflator is not being charged or inflating other devices, it can be used as a 5V/2A power bank. And the battery should have a reasonable capacity of charging in order to work.

USB will appear on the LED screen, when connect charging cable and the USB-A port. After charging devices remove the cable from the inflation in time. (Fig. 5)

Fig. 5

⚠ WARNING:

It is not allowed to charge other devices when the inflator is inflating or charged. Otherwise these two operation will shorten the life of your devices and inflator.

6.4 Operation interface(Fig. 6)

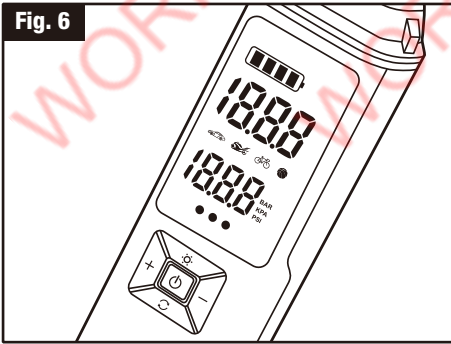
Switch button

Long press for 2 seconds to switch on/off the inflator, press to start/stop inflating.

If air pressure can't be detected at the inflation outlet for a long time, the inflator will automatically stop in 30 seconds.

The air inflator will automatically shut down without operating within 45 seconds.

Fig. 6



Pressure increase “+” and decrease button “-”

Press “+” to increase preset pressure, press “-” to decrease preset pressure. Long press the “+” or “-” to quickly adjust. The inflator will automatically stop inflating when reach the preset pressure value.

Real-time pressure can be indicated by three indicator lights after connecting inflator with the devices.

LED	Meaning
Red light on	Real-time pressure exceeds 110% of the preset pressure
Green light on	Real-time pressure is between 90% and 110% of the preset pressure
Yellow light on	Real-time pressure is under 90% of the preset pressure

! WARNING:

To ensure safety and avoid injury from bursting items due to over-inflation, always refer to the instruction to determine the proper air pressure before inflating.

AIR PRESSURE REFERENCE TABLE

Category	Type	Recommended Pressure Range
Bicycles	Electric Folding Bike tires	10 - 50psi
	12-, 14-, & 16-inch bicycle tires	30 - 50psi
	20-, 22-, & 24-inch bicycle tires	40 - 50psi
	26-, 27.5-, & 29-inch mountain bike tires	45 - 65psi
	Electric Scooter tires	40 - 50psi
	700c road bike clincher tires	100 - 130psi
	700c road bike tubular tires	120 - 145psi
Motorcycles	Scooter & street motorcycle tires	1.8 - 3.0bar
Cars	Car tires	2.2 - 2.8bar
Balls	Basketball	7 - 9psi
	Soccer ball	8 - 16psi
	Volleyball	4 - 5psi
	Football	12 - 14psi

Caution: Inflating Items such as balloons, beach balls, and swimming rings manually with caution. Because these items have an air pressure requirement below the air inflator's minimum pressure range. So the air inflator cannot stop inflating automatically.

Light button

Press the light button to cycle through High light, Low light, SOS light and OFF.

Mode button

Press the button to switch among Car mode, Motorcycle mode, Bicycle mode, Ball mode and manual mode five inflation modes.

Long press the button to switch the pressure unit among PSI/BAR/KPA .

	Default	Adjustable range
Car mode	2.5 Bar	1.8-3.5 Bar
Motorcycle mode	2.4 Bar	1.8-3.0 Bar
Bicycle mode	45 psi	30-145 psi
Ball mode	8 psi	4-16 psi
Manual mode	60 psi	3-150 psi /0.2-10.3 Bar

In the manual mode, no mode icon display on the screen, the preset pressure value is adjustable.

7. TROUBLE SHOOTING

Problem	Possible reason and solutions
Slow inflation speed	<ol style="list-style-type: none"> 1. Check whether the air inflator battery capacity is sufficient. 2. Check if the air hose/inflated items leaks. 3. Check whether the end of the air hose and adaptor are tightly connected.
Inflator does not work	<ol style="list-style-type: none"> 1. Check if the preset pressure is lower than the current pressure. 2. Check whether the battery capacity is sufficient.
The inflator works normally, and the current pressure display zero	<ol style="list-style-type: none"> 1.The inflated items pressure is lower than inflator inflating range. 2.In the case of an empty tire, the tire pressure value can be detected after a short period of inflation.
The appliance shuts off after connecting with the valve	It will automatically shut down if there is no operation for 45 seconds. Press and hold the Switch button to turn it on again.
Unable to increase or decrease the preset pressure	Make sure the appliance is set under the correct mode.The custom mode allows you to adjust the preset value within the range of 3-150 psi.
Air leakage after connecting with the valve	Make sure the air chuck is securely connected with the adaptor.
The battery capacity indicator is different when inflating compared to standby state	The lithium battery's voltage level significantly drops when discharging power, causing the battery capacity indicator to have a different display when inflating compared to the standby state.This is normal.
The battery capacity indicator doesn't show on the screen after charging	Recharge the appliance with a safe and compliant charging cable and adaptor. If it still doesn't show on the screen, please contact our service team.

8. CLEANING, MAINTENANCE

8.1 Cleaning

- Keep all safety devices, air vents and the motor housing free of dirt and dust as far as possible. Wipe the equipment with a clean cloth or blow it with compressed air at low pressure.
- We recommend that you clean the device immediately each time you have finished using it.
- Clean the equipment regularly with a moist cloth and some soft soap. Do not use cleaning agents or solvents; these could attack the plastic parts of the equipment. Ensure that no water can seep into the device. The ingress of water into an electric tool increases the risk of an electric shock.

8.2 Maintenance

There are no parts inside the equipment which require additional maintenance.

9. STORAGE

Store the equipment and accessories in a dark and dry place at above freezing temperature. The ideal storage temperature is between 5°C(41°F) and 30°C(86°F). Store the electric tool in its original packaging.

For storage, it is suggested to recharge the battery between 50% and 75% charge, and charge the device at least once in 3-6 months to preserve battery lifespan.

10. DISPOSAL AND RECYCLING

The equipment is supplied in packaging to prevent it from being damaged in transit. The raw materials in this packaging can be reused or recycled. The equipment and its accessories are made of various types of material, such as metal and plastic. Never place defective equipment in your household refuse. The equipment should be taken to a suitable collection center for proper disposal. If you do not know the whereabouts of such a collection point, you should ask in your local council offices.



Environmental protection

This product has been marked with a symbol relating to removing electric and electronic waste.

This means that this product shall not be discarded with household waste but that it shall be returned to a collection system. It will then be recycled or dismantled in order to reduce the impact on the environment. Electric and electronic equipment can be hazardous for the environment and for human health since they contain hazardous substances.



Disposal of an exhausted battery pack

To preserve natural resources, please recycle or dispose of the battery pack properly. This battery pack contains Li-ion batteries. Consult your local waste authority for information regarding available recycling and/or disposal options. Discharge your battery pack by operating your tool, then remove the battery pack from the tool housing and cover the battery pack connections with heavy-duty adhesive tape to prevent short circuit and energy discharge. Do not attempt to open or remove any of the components.

WORKPRO