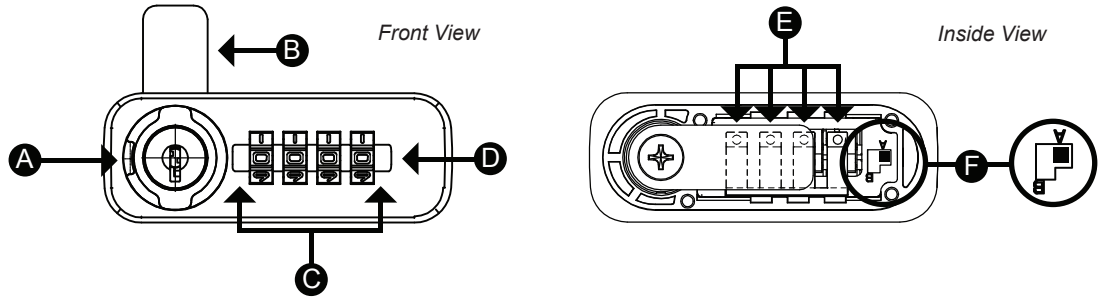


Wall-Mounted Key Lock Box with Combination and Key Lock

Please store your keys in a secure location, not inside the lock box. These keys are required to access the key cabinet.

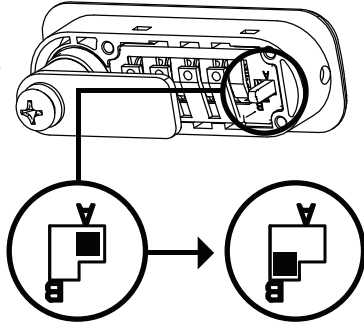
Parts Of The Combination Lock

- A. Knob
- B. Lock
- C. Number Dial
- D. Alignment Line
- E. Aftercoder
- F. Reset Button

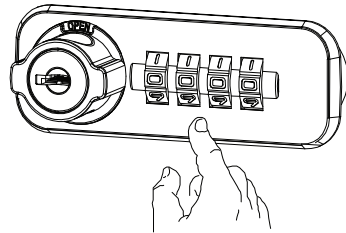


Setting Your Personal Combination Code

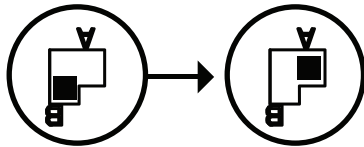
1. Turn the dials to the factory preset code 0-0-0-0 and turn the knob to the open position.
2. With the knob in the open position, slide the reset button to the "B" position.



3. Turn the dials to your desired personal combination. Ensure the numbers are perfectly centered on the alignment line.
4. Slide the reset button back to the "A" position. Test your new code by turning the knob while the door is still open before locking the cabinet.



WARNING
Always return the reset button to position "A" after changing your code. Failure to do so allows unauthorized individuals to reprogram the lockbox and gain full access to the contents.



Operating the Cabinet

Using the Combination Lock

To Unlock
Align the dials to your personal combination and turn the knob.

To Lock
Close the door, turn the knob to the locked position, and scramble the dials to random numbers.

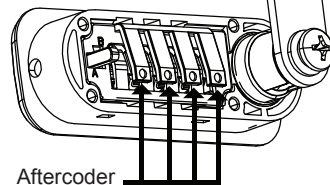
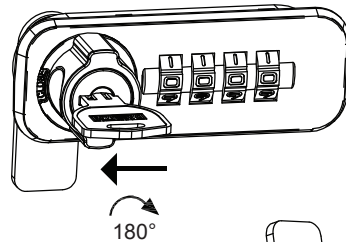
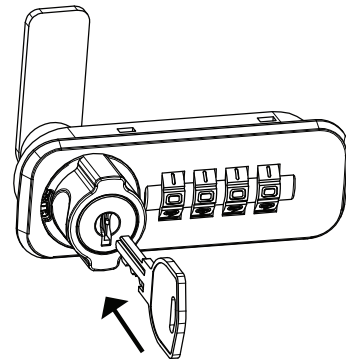
Using the Emergency Key

To Unlock
Insert the key and turn the knob to open the door.

To Lock
Turn the key back to the original position and remove it.

How to Recover a Forgotten Combination

1. Use the key to open the door. Once the door is open, turn the knob back to the closed position and remove the key.



2. On the back of the lock mechanism, locate the four "Aftercoder" (code-finder) pins.
3. Press and hold the first pin while rotating its corresponding dial on the front.
4. The dial will stop moving or "click" when it reaches the correct number.
5. Repeat this for all four dials.
6. Once all four numbers are found, test the code by turning the knob before closing the door.

See reverse for more information



1 YEAR LIMITED WARRANTY

SAFE/LOCK BOX

BARSKA warrants this new safe/lock box to be free of defects in material and/ or workmanship under normal use for a period of twelve (12) months from the date product is purchased. This limited warranty is delimited to repair or replacement only. This warranty does not cover damage caused by improper installation or maintenance. BARSKA disclaims all liability for incidental or consequential damages resulting from misuse, abuse, accident (such as dropping), fire, flood, service or repairs other than those performed by BARSKA, acts of nature, or arising out of any breach of this warranty. Altering the product under any circumstances will automatically void the warranty.

For service under this limited warranty, please have available the proof of purchase and the purchase date and location as well as a detailed description of the problem. This warranty is not transferable and only applies to the original purchaser with a proof of purchase from BARSKA or from an authorized dealer. This warranty applies only to products purchased within the United States, excluding Alaska, the Hawaiian Islands and all U.S. territories in the Caribbean and the Pacific.

BARSKA will examine and go through troubleshooting procedures, product repair or replacement of defective part(s) or units with new part(s) or provide a new unit, if necessary, during the warranty period. Reasonable shipping/handling charges may apply and are based on Barska sole discretion. Purchaser shall be required to prepay Shipping/handling charges with a check or money order to BARSKA at time product is returned. The Return Merchandise Authorization Number (RMA#) and shipping/handling charge MUST be obtained from BARSKA in advance of return. BARSKA shall not be liable for damages or loss occurring during shipping. Please visit via www.barska.com or call 909.445.8168 to obtain the RMA#, Shipping/handling amount, and for more information.

BARSKA reserves the right to modify or discontinue, without prior notice to the purchaser, any model or style of the product. BARSKA will determine, at its sole discretion, whether a product will be repaired or replaced. BARSKA reserves the right to discontinue or change any feature of its products at any time. If an exact replacement or product is not available, BARSKA reserves the right to provide a part or product that matches as closely as possible.

LIMITATION OF REMEDIES

BARSKA disclaims any warranties, express or implied, whether of merchantability or fitness for a particular use, except as expressly set forth herein. The sole obligation of BARSKA under this limited warranty shall be to repair or replace the covered product, in accordance with the terms set forth herein. BARSKA expressly disclaims any lost profits, general, special, indirect or consequential damages which may result from breach of any warranty, or arising out of the use or inability to use any BARSKA product. Any warranties which are implied and which cannot be disclaimed shall be limited in duration to a term of one year from the date of original retail purchase.

Some states do not allow the exclusion or limitation of incidental or consequential damages or limitation on how long an implied warranty lasts, so the above limitations and exclusions may not apply to you.

BARSKA
855 Towne Center Drive, Pomona, CA 91767

BC767

Note: All information, feature, and specification displayed herein are based on the data available at the time of publishing, thus they are subject to change without notice. All product pictures displayed herein are for illustration purposes only. The actual product may vary due to different circumstances

