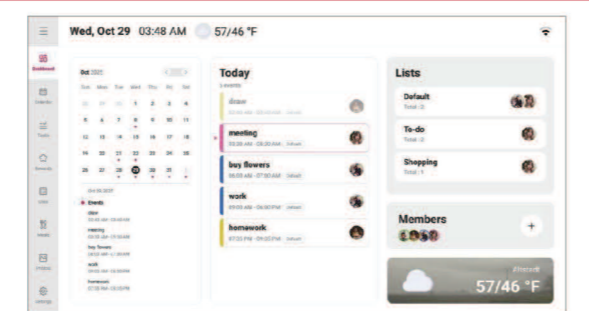


### Table of Contents

- Dashboard ..... 01
- How to Sync External Calendar to Your Account ..... 02
- Important Notes for Calendar Sync ..... 03
- Create Event ..... 04
- Create Tasks ..... 06
- Create Rewards ..... 07
- Add List ..... 08
- Meals ..... 10
- Photos ..... 11
- General Settings ..... 13
- Calendar Settings ..... 14
- Account Management ..... 15
- FAQ ..... 17
- FCC Warning Statement ..... 18
- EU Declaration of Conformity ..... 19
- ISED Statement ..... 21

For first-time use, please make sure your calendar version is the latest by following the path below:  
**Settings → More → Upgrade → Click "Check for new version".**  
 If "No new version" is displayed, your device is already up to date.

### Dashboard



**Note:** As the software version may be periodically updated, the interface displayed may vary depending on the calendar device.

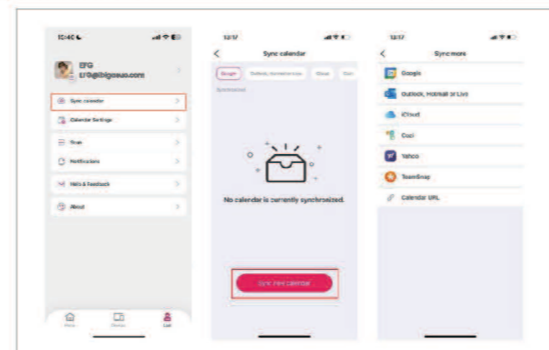
#### Quick Overview of Your Schedule:

<b>Month View:</b>	View the entire month's events at a glance. Switch between dates to check the specific plans for each day.
<b>Today's Events:</b>	Focus on today's agenda to help you stay on top of daily tasks. Completed events appear in grey, while pending events remain in their usual status. The current time period is highlighted for easy reference.
<b>List View:</b>	Displays ongoing categories and the number of events within each category, making it easier to manage and review your schedule.
<b>Weather/ Temperature:</b>	Automatically updates with the local time zone's weather and temperature. The temperature is displayed in both Celsius and Fahrenheit, with Fahrenheit set as the default.

### How to sync External calendar to your account

Before sync external calendar, please refer to the Quick Start Card to ensure that your calendar device and the Whale Framely app have been successfully paired.

1: Sync operations can only be completed through the app. See the following picture:



When you sync your external calendar (such as Google, iCloud, etc.) with Whale Framely, any changes made to the source calendar will be automatically updated in the Whale Framely calendar.

#### Note:

iCloud compatibility: iPhone 8s or later, with at least 16GB of storage, running iOS 13.0 or higher.

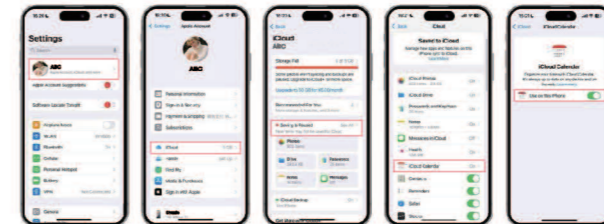
**Video tutorials**  
 Scan this QR code, you'll find a step tutorial on how to sync your Google Calendar, Apple Calendar (iCloud), Outlook Calendar, and compatible calendars on your account.

### Important Notes for Calendar Sync

1. Google Calendar is the only service that supports two-way sync (changes update in both directions). For other calendars (e.g., iCloud, Outlook, etc.), the sync is one-way (changes update only from the app to the calendar).

2. iCloud Sync: If you can't find the "Share Link" option as prompted by the app, make sure calendar permissions are enabled in your iCloud settings. Follow these steps:  
 (1) Go to Settings > Your Name > iCloud.  
 (2) Tap See All (or Show All), then select iCloud Calendar.  
 (3) Turn On on this iPhone on.

**Note:** Screenshots provided are for reference only. The exact layout and options may vary slightly depending on your operating system version, so some features might be located in different places.

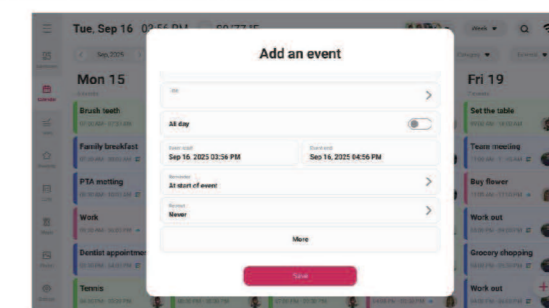


### Create Event

You can create events directly through your calendar or the Whale Framely app. Your event will be automatically synced between your calendar and the app.

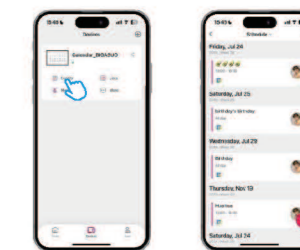
#### How to Create an Event on Your Digital Calendar?

1. In the calendar section, Tap the "+" icon in the bottom right corner of the screen  
 2. Enter event details: On the next page, fill in the event title, time, and any other relevant details.  
 3. Save event: Once you've reviewed the information and confirmed it's correct, tap the "Save" button. The event will be instantly added to your calendar.

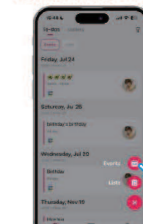


#### How to create an event on a Whale Framely app?

1. Launch the App: Open your "Whale Framely" App. You have two options to create an event:  
 (1) Go to the "Device" module and select the calendar you want to manage.

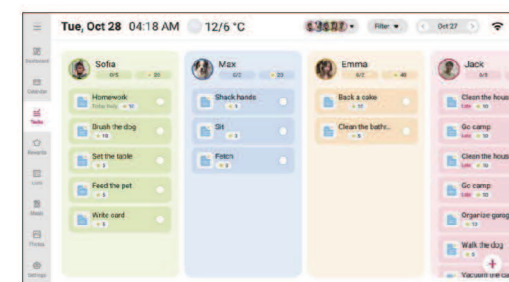


(2) Alternatively, choose "Events" in the "Home" module.



2. Add event(s): Tap the "+" icon at the bottom right corner of the screen.  
 3. Enter event details: On the next page, fill in the event title, time, and any other relevant details.  
 4. Save event: Once you've reviewed everything and confirmed it's correct, tap the "Save" button. Your event will be instantly added to the calendar.

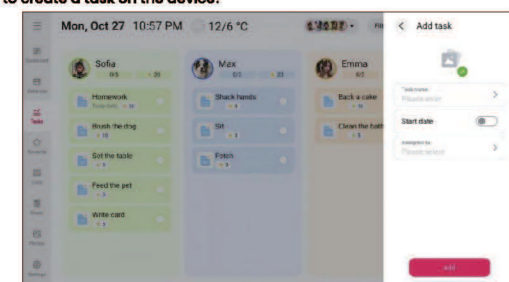
### Create Tasks



Tasks are a core feature of the Calendar device, helping you stay on top of important activities in your daily life. Examples of tasks include chores like "Clean the garage" or "Mow the lawn."

**Create a task**  
 You can create tasks on your device. Once created, the task will sync to the app.

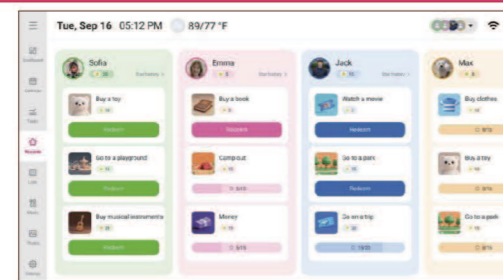
#### How to create a task on the device?



1. Open the task module on the device.  
 2. Tap the "+" icon in the bottom right corner of the screen.  
 3. On the next page, enter the task name, choose the date and time, and assign the task to the members.  
 4. After confirming all information is correct, click the "Add" button. The task will then sync and be displayed in the creator's app.

**View Task Details**  
 In the Tasks module, tap on a task to view its details, including the task name, time, and stars that can be earned. Long press on a task to adjust its order, helping you optimize your task arrangement.

### Create Rewards



Rewards is a feature that helps motivate kids by making their progress toward goals visible and trackable.

**View Reward Details**  
 In the Rewards module, tap on a reward to view its details, including the reward name, time, and stars required for redemption. Long press on a reward to adjust its order.

#### Redeem a Reward on the Calendar

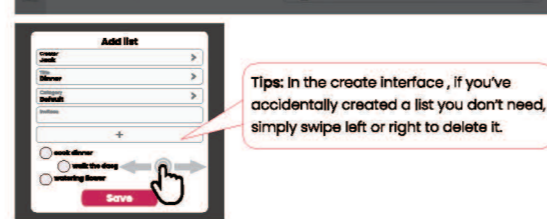
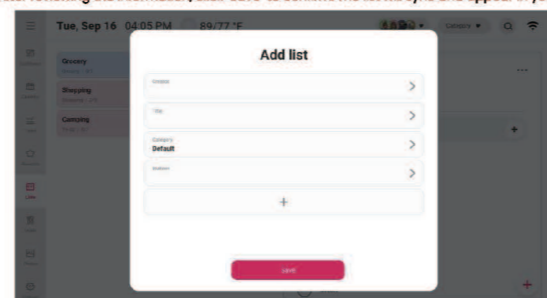
1. Tap Rewards in the Navigation bar on the Calendar.  
 2. Find your member.  
 3. Tap the Redeem button associated with the Reward you want.  
**Note:** The Calendar device only supports viewing. Please create rewards through the Whale Framely app.

### Add List

You can create a list via your calendar or Whale Framely, and it will sync across both platforms. You can Edit Lists, Copy List, Delete List.

#### How to create an list on your digital calendar?

1. Open the list module on the device.  
 2. Tap the "+" icon in the bottom right corner of the screen.  
 3. On the next page, enter the list creator, title, and other details.  
 4. After reviewing the information, click "Save" to confirm. The list will sync and appear in your app.

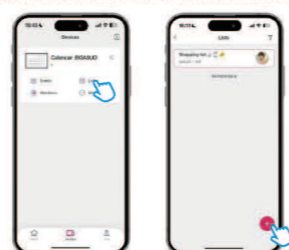


#### Reminder:

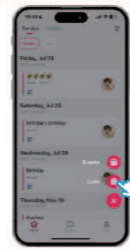
By default, your calendar device will display lists with completed items. To hide them, go to **Settings > Calendar**, then enable the **"Hide Completed Lists"** option.

#### How to create an list on Whale Framely app?

1. Launch the App: Open your "Whale Framely" App, here are two way to create:  
 (1) find the lists you want to manage in the "Device" module.



(2) Choose "Lists" in the "Home" module.



2. Add a New List: Tap the "+" icon in the bottom right corner of your screen to begin creating a new list.  
 3. Enter List Details: Type in the list title, choose a category label, and add your to-do tasks underneath.  
 4. Save the List: Once you've double-checked everything, tap "Save" and your list will automatically appear on the selected calendar.

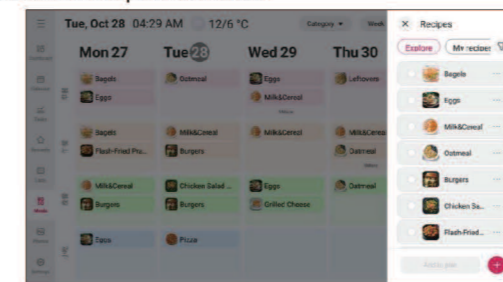
### Meals

Meal planning is a powerful feature that allows you to schedule an entire week's meals in just a few minutes.



**Create a meal plan**  
 You can create meal plans on your device. Once created, the meal plan will sync to the app.

#### How to create a meal plan on the device?



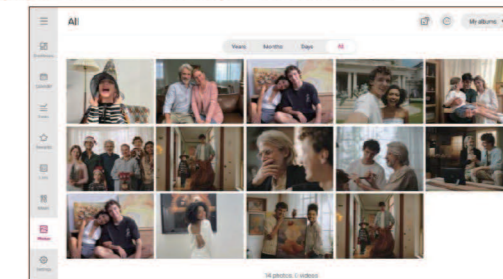
1. Select the Meals module.  
 2. Tap the tile for the mealtime you want to add a recipe to, or tap the "+" button.

3. Choose the recipes you want to add from the recipe box (multiple selections are supported).  
 4. After making your selections, tap Add to Plan.  
 5. Once added, you can simply tap the tile for that meal to view the full details.

**View Meal Details**  
 In the Meals module, tap on a dish to view its details, including the dish name, image, ingredients, and more.

### Photos

You can share photos and videos to the Calendar device via the Whale Framely App. On the Calendar device, you can manage your photos, create custom albums, set cover, play slideshows, and even use photos as a screensaver.



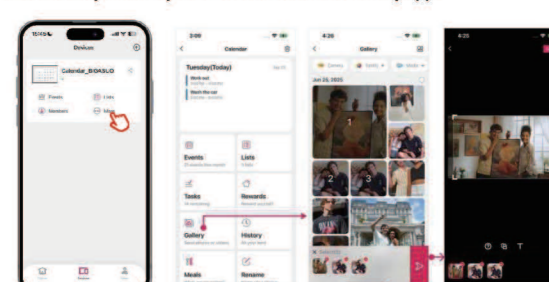
**Flexible Browsing**  
 Supports viewing in chronological or reverse chronological order. You can also filter and view only photos or videos.

**Quick Search**  
 Use the time tab to precisely locate and review images from specific periods.

**Personalized Playback**  
 Allows you to play the content of any album individually and customize the playback order.

**Custom Albums**  
 You can create exclusive albums based on themes, people, locations, etc.

#### How to send photos to your calendar via Whale Framely app:



## **FCC Caution**

This device complies with part 15 of the FCC Rules. Operation is subject to the following two conditions:

- (1) This device may not cause harmful interference, and
- (2) this device must accept any interference received, including interference that may cause undesired operation.

Any Changes or modifications not expressly approved by the party responsible for compliance could void the user's authority to operate the equipment.

Note: This equipment has been tested and found to comply with the limits for a Class B digital device, pursuant to part 15 of the FCC Rules. These limits are designed to provide reasonable protection against harmful interference in a residential installation. This equipment generates uses and can radiate radio frequency energy and, if not installed and used in accordance with the instructions, may cause harmful interference to radio communications. However, there is no guarantee that interference will not occur in a particular installation. If this equipment does cause harmful interference to radio or television reception, which can be determined by turning the equipment off and on, the user is encouraged to try to correct the interference by one or more of the following measures:

- Reorient or relocate the receiving antenna.
- Increase the separation between the equipment and receiver.
- Connect the equipment into an outlet on a circuit different from that to which the receiver is connected.
- Consult the dealer or an experienced radio/TV technician for help.

This equipment complies with FCC radiation exposure limits set forth for an uncontrolled environment. This equipment should be installed and operated with minimum distance 20 cm between the radiator & your body.