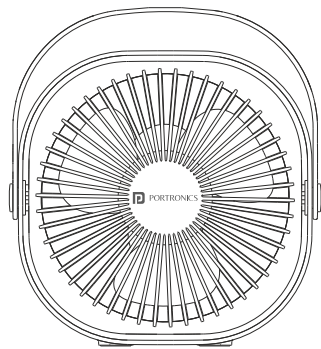




COOLCUBE

PORTABLE DESKTOP FAN

User Manual



Product Parameters

Product Name	:	CoolCube
Product Model	:	POR 3051
Product Size	:	200x200x66mm
Rated Voltage	:	5V \equiv 1A
Rated Power	:	5.5Wh

Charging and Operation Instructions

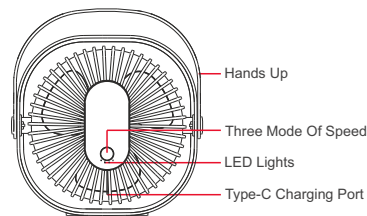
Charging: Use the provided cable to charge the device under normal circumstances. Plug in the USB cable to start charging. The first indicator light will turn on to confirm the connection.

Operating the Fan

Press the power button once: The second indicator light will turn on, and the fan will start at low speed (first gear).

Press the button again: The third indicator light will turn on, and the fan will switch to medium speed (second gear).

Press the button once more: The fourth indicator light will turn on, and the fan will operate at maximum speed.

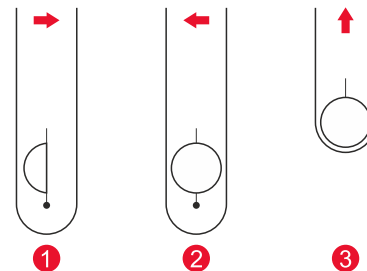


⚠ Precautions

- Do not insert foreign objects into the fan when using it to avoid damage to the product
- Do not use this product in a humid environment (such as a bathroom). Contact with water may result in Product failure or damage.
- If the product accidentally enters water or other liquid, immediately turn off the fan power switch and let it Completely dry and try again.
- Do not knock or beat this product. Repeated strokes may cause internal damage.
- If you do not use this product for a long time, do not store it in a place with high temperature and high humidity.
- Do not disassemble, modify or repair this product by yourself.
- Do not put the product into fire so as to avoid danger of explosion.
- Do not use at temperatures above 60 degrees Celsius.

- If the product cannot be charged, replace the charging head or charging cable and try again.
- If the product is abnormally hot or deformed during charging, stop immediately Charge and contact customer center for processing.
- If liquid leakage occurs, the body inadvertently comes in contact with liquid. Seek medical help. Do not continue using the product.

Assembly handle



www.portronics.com

For Support

Visit : www.portronics.com

Email : help@portronics.com

Contact No. : +91 9555245245

(Working Hrs. : Monday - Saturday 10:00am - 6:00pm)



E-Waste Management
E: info@3rrecycler.com

For E-Waste & ROHS compliance refer to www.portronics.com/ewaste