

ADCRAFT®



INSTRUCTION MANUAL

BWM-7/R

BWM-7/R-2

BELGIAN WAFFLE MAKERS

This manual contains important information regarding your Adcraft unit. Please read this manual thoroughly prior to equipment set-up, operation and maintenance. Failure to comply with regular maintenance guidelines outlined in this manual may void the warranty.

WARNINGS

- Do not touch any hot surfaces
- Plug only into a 3-hole grounded electrical outlet of the appropriate voltage
- Do not immerse unit, cord or plug in liquid at any time
- Unplug cord from outlet when not in use and before cleaning
- Do not operate unattended
- Do not use this unit for anything other than intended use
- Do not use outdoors
- Always use on a firm, dry and level surface
- Do not use if unit has a damaged cord or plug, in the event the appliance malfunctions, or has been damaged in any manner
- Keep children and animals away from unit
- Any incorrect installation, alterations, adjustments and/or improper maintenance can lead to property loss and injury. All repairs should be done by authorized professionals only.

TO USE

1. Turn on power switch. Three beeps will sound indicating that the machine has power and the heating process has been initiated.
2. After this the LED display will show a time in minutes and seconds. Before you set the time you must set the heating temperature that you would like to cook your waffles at. In order to do this hold the “SET” button and then press the “START/STOP” button. This will then display the temperature that the unit is currently set to. Use the “+ and –” buttons in order to change the displayed temperature to the one desired and then press “SET” to finalize this parameter. The unit will then continue heating to this set temperature and will continue to maintain this temperature for the remainder of the cooking process and the whole time the unit’s power switch is turned on.
3. In order to begin the time feature press and hold the “START/STOP” button and use the “+ and –” buttons in order to change the minutes and seconds displayed on the LED display. Once you have set your desired time press the “START/STOP” button once to begin the time countdown. Once the time on the display has reached “00:00” an alarm will sound indicating the timer has ran out of time.

NOTE: The timer feature has NO AFFECT on the heating process. It is just a timer for your convenience to help you keep track of your cooking times. The unit will always maintain the set temperature you have input as long the power switch is turned on, regardless if the timer has run out or not.

MAKING WAFFLES

Turn the unit on and pre-heat for 15 minutes with the waffle grids closed. To make waffles follow these instructions:

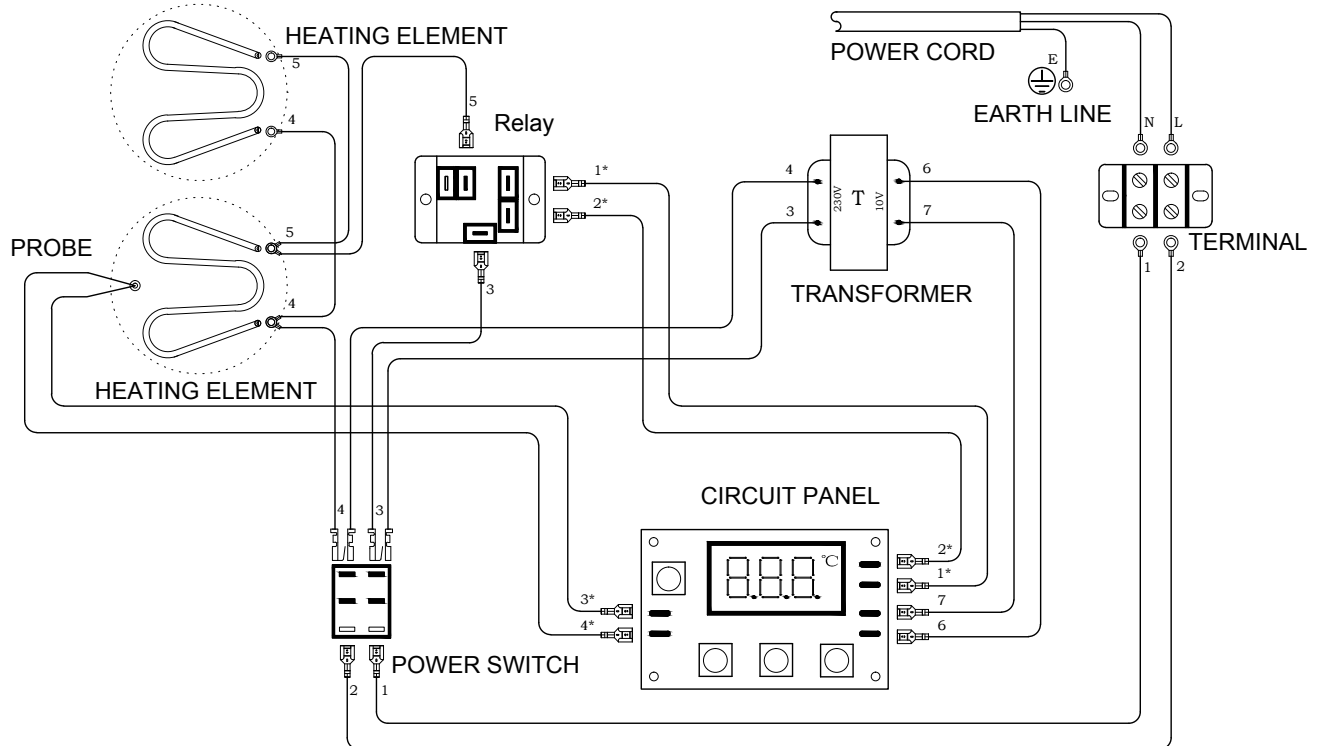
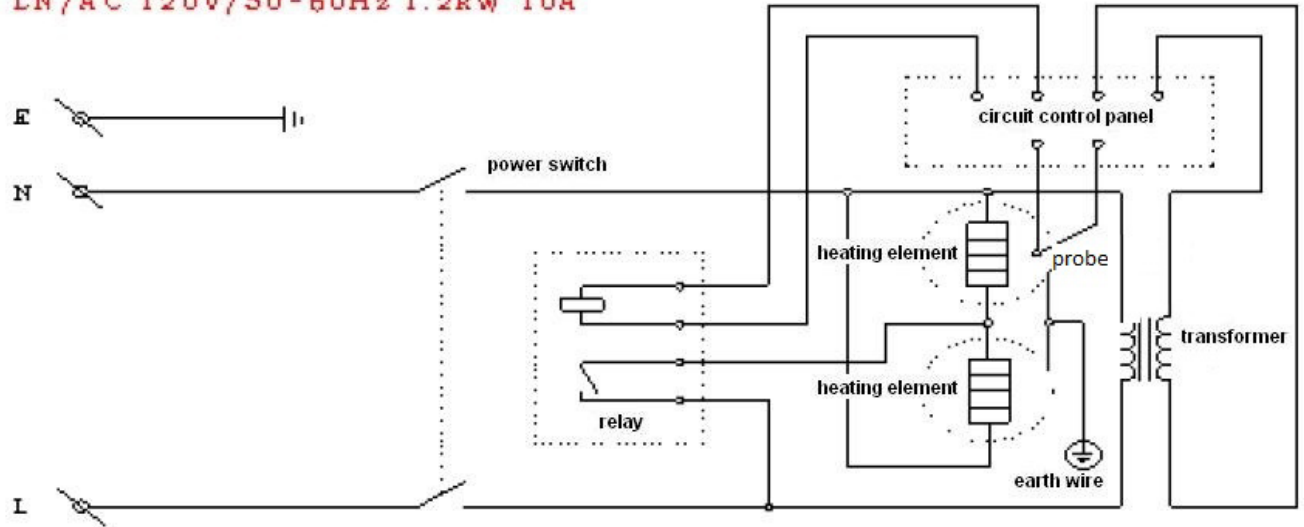
1. Spray or brush on releasing agent.
2. Lift the top lid, pour in the mix and close. Allow waffle batter to sit for 10 seconds.
3. Start timer by pressing the start/stop button.
4. Rotate grids 180°.
5. Cook until the timer beeps and press the start/stop button to stop the timer.
6. Rotate grids 180°.
7. Remove waffle. **Do not use metal utensils on non-stick waffle irons.**
8. To cook more waffles repeat steps 1 through 7.

CLEANING – NOTE: To maintain cleanliness and increase service life, this item should be cleaned daily. Do not immerse the unit in water or any other liquid. If liquid enters the electrical compartment it may cause a short circuit or electrical shock

1. Unplug the unit and let cool down.
2. Clean the waffle iron plates with a wet towel only.
3. Do not use a wire scrub brush or metal utensils on the waffle iron plates.

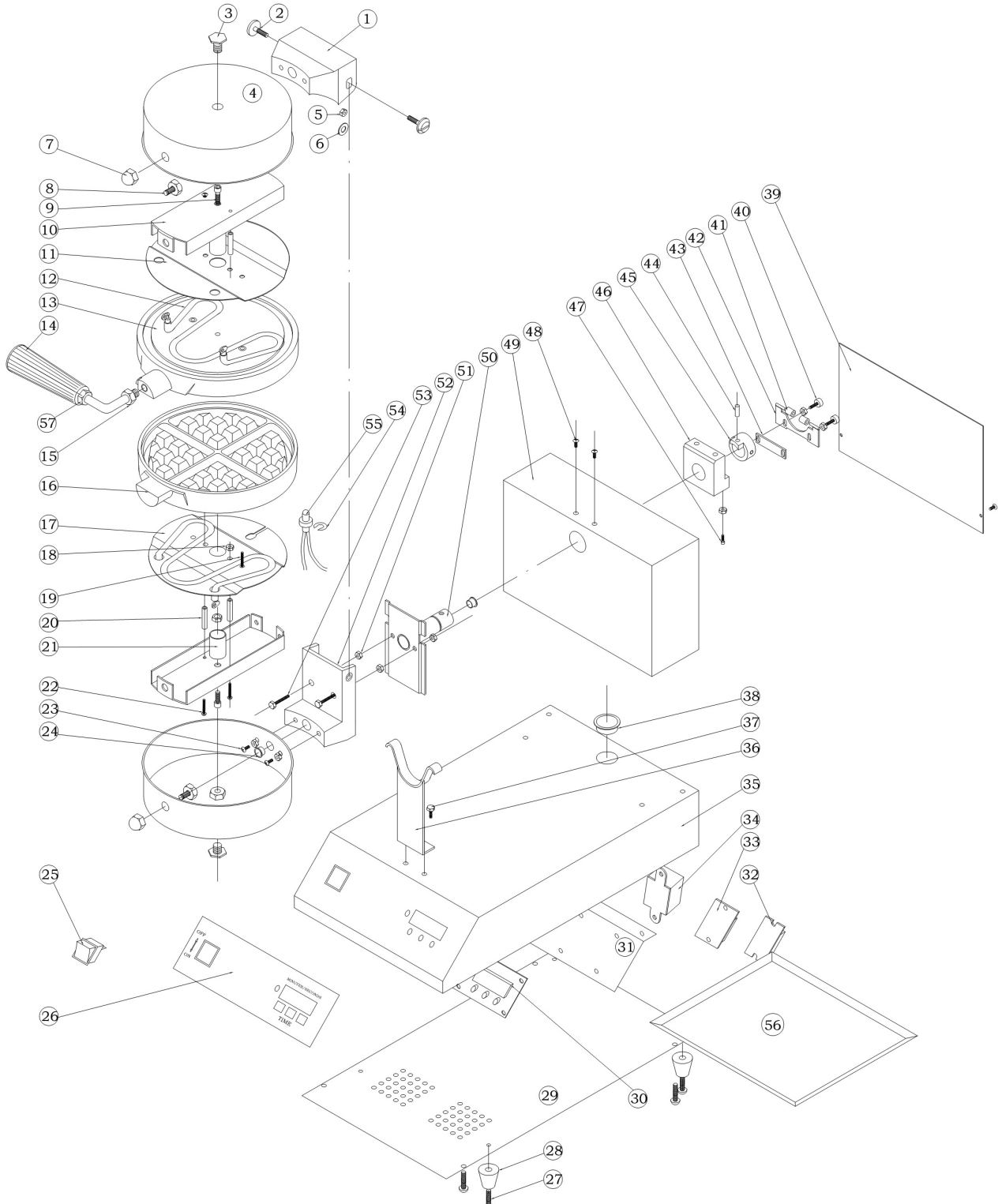
Wiring Diagram for the Waffle Makers

LN/AC 120V/50-60Hz 1.2kW 10A



LN/AC 115V/50~60Hz 1.2kW/10.5A

Parts Diagram and Replacement Parts for the Single Waffle Maker



Replacement Parts for the Single Waffle Maker

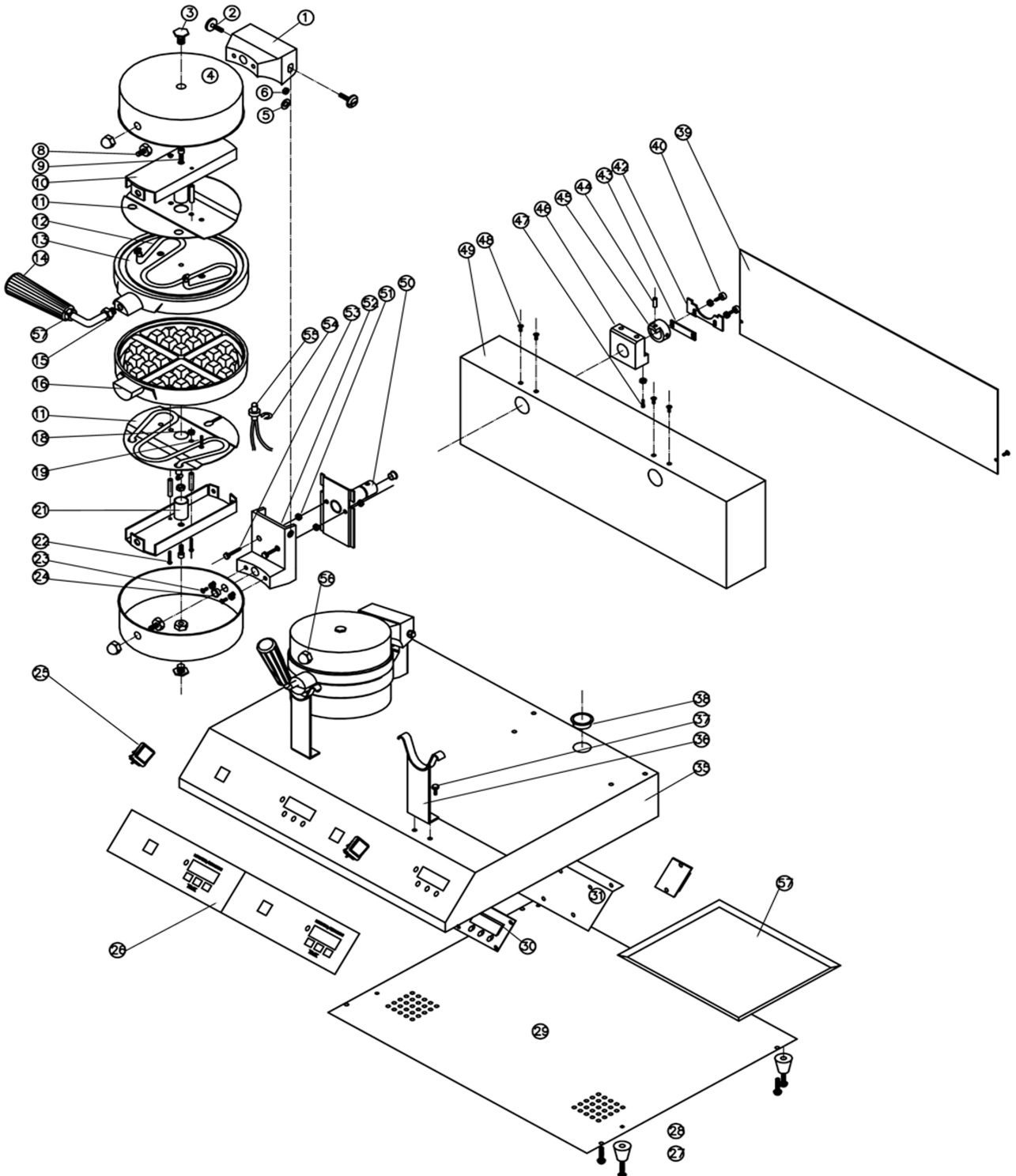
BWM-7/R - Belgian Waffle Maker 7" Round

Diagram Number	Description	QTY
1	Upper Rotating Arm	1
2	Screw	2
3	Head Screw	2
4	Body	2
5	Washer	2
6	Nut	4
7	Nut	2
8	Hexagonal Screw	2
9	Socket Screw	2
10	Cross Beam	2
11	Presser Bit for Heating Elements	2
12	Upper Pan	1
13	Handle	1
14	Nut	3
15	Lower Pan	1
16	Presser Bit for Heating Elements	1
17	Nut	6
18	Cross Screw	8
19	Spacing Pipe	4
20	Spacing Pipe	2
21	Screw	4
22	Screw	4
23	Cross Head Screw	4
24	Rubber Ring	3
25	Switch	1
26	Facial	1
27	Cross Head Screw	4
28	Foot	4
29	Bottom Board	1
30	Controlling Board	1
31	Electrical Parts Base	1
32	Contacto	1
33	Terminal	1
34	Transformer	1
35	Bottom Board	1
36	Bracket for rotating Arm	1
37	Hexagonal Bolt	4
38	Rubber Ring	1
39	Back Board	1
40	Socket Screw	2
41	Collision Bead	2
42	Bracket for Collision Bead	1
43	Spacing Board	1
44	Spacing Pin	1
45	Angle Spacing Sleeve	1

Diagram Number	Description	QTY
46	Bearing Bracket	1
47	Socket Screw	2
48	Cross Screw	4
49	Back Board	1
50	Rotating Shaft	1
51	Nut	5
52	Lower Rotating Shaft	1
53	Hexagonal Bolt	2
54	Shaft Circlip	1
55	Probe and Heating Wire	1
56	Crumb Tray	1
57	Nut	1

VER1114

Parts Diagram and Replacement Parts for the Double Waffle Maker



Replacement Parts for the Double Waffle Maker

BWM-7/R-2 - Belgian Waffle Maker - Double Round 7"

Diagram No.	Description	Qty
1	Upper rotating arm	2
2	Screw	4
3	Head screw	4
4	Body	4
5	Washer	4
6	Nut	4
8	Hexagonal screw	4
9	Socket screw	4
10	Cross beam	4
11	Presser bit for heating elements	4
12	Heating elements	4
13	Upper pan	2
14	Handle	2
15	Nut	2
16	Lower pan	2
18	Nut	8
19	Cross screw	8
21	Spacing pipe	4
22	Screw	8
23	Cross head screw	4
24	Bushing A	4
25	Switch	2
26	Facial	2
27	Cross head screw	4
28	Foot	4
29	Bottom board	1
30	PC board	2
31	Electrical parts base	2
33	Terminal	2
35	Bottom board	1
36	Bracket for rotating arm	2
37	Hexagonal bolt	4
38	Snap Bushing	2
39	Back board	1
40	Socket screw	4
42	Collision bead	2
43	Spacing board	2
44	Spacing pin	2
45	Angle spacing sleeve	2
46	Bearing bracket	2
47	Socket screw	4
48	Cross screw	4
49	Back board	1

Diagram No.	Description	Qty
50	Rotating shaft	2
51	Nut	4
52	Lower rotating shaft	2
53	Hexagonal bolt	4
54	Shaft circlip	2
55	Probe(PC board includes probe)	2
56	Nut	2
57	Crumb tray	2

ACE Equipment One Year Limited Warranty

Admiral Craft Equipment Corp. (ACE) warrants its equipment against defects in materials and workmanship, subject to the following conditions:

ACE Equipment is warranted for one year, effective from the date of purchase by the original owner. A copy of the original receipt or other proof of purchase is required to obtain warranty coverage. This warranty applies to the original owner only, and is not assignable.

Should any product fail to function in its intended manner under normal use within the limits defined in this warranty, at ACE's discretion, such product will be repaired, replaced with a refurbished unit, or replaced with a new unit by ACE, after defective unit has been inspected and defect has been confirmed. ACE does not assume any liability for extended delays in replacing any item beyond its control. This warranty does not apply to rubber and non-metallic synthetic parts that may need to be replaced due to normal usage, wear or lack of preventative maintenance.

This warranty covers products shipped into the 48 contiguous United States, Hawaii, and metropolitan areas of Alaska and Canada. Warranty coverage on products used outside the 48 contiguous United States, Hawaii and metropolitan areas of Alaska and Canada may vary. Contact ACE for details at 1-800-223-7750

The following conditions are not covered by warranty:

- Equipment failure relating to improper installation, improper utility connection or supply and problems due to improper ventilation.
- Equipment that has not properly been maintained, damage from improper cleaning, and water damage to controls.
- Equipment that has not been used in an appropriate manner, or has been subject to misuse, neglect, abuse, accident, alteration, negligence, damage during transit, delivery or installation, fire, flood, riot, or act of God.
- Equipment that has the model number or serial number removed or altered.
- Equipment on which the security seal has been broken.

If the equipment has been changed, altered, modified, or repaired without express written permission from ACE, then the manufacturer shall not be liable for any damages to any person or to any property, which may result from the use of this equipment thereafter.

This equipment is intended for commercial use only and this warranty is void if equipment is used in other than a commercial application.

For warranty and non-warranty related issues, technical support, purchase replacement parts and warranty registration visit www.admiralcraft.com. Please have your model number, serial number and proof of purchase ready. It is not necessary to contact the place where you originally purchased your product from.

“THE FOREGOING WARRANTY IS IN LIEU OF ANY AND ALL WARRANTIES EXPRESSED OR IMPLIED INCLUDING ANY IMPLIED WARRANTY OF MERCHANTABILITY OR FITNESS FOR PARTICULAR PURPOSES AND CONSTITUTES THE ENTIRE LIABILITY OF ACE. IN NO EVENT DOES THE LIMITED WARRANTY EXTEND BEYOND THE TERMS STATED HEREIN.”

VER1212