

# Bluetooth Earphones



## Good Voice Everyday

### Accessory Guide

Model: HT-001

This is authentic accessory for Good Voice OTC Hearing Aids (GV-SA3.60). The Bluetooth Earphone must be paired with the Good Voice Controller to function properly.



### General Information

The Good Voice Bluetooth Earphones (Model HT-001) are accessories designed to be used exclusively with the Good Voice OTC Hearing Aid controller (Model GV-SA03.60). They do not amplify sound or stream audio on their own and will not function without the controller.

This leaflet provides limited usage instructions and safety information for the earphones. For complete operating instructions, safety warnings, troubleshooting guidance, and warranty terms, please refer to the main user manual included with your Good Voice OTC Hearing Aid package.

The full manual is also available online at: [www.okbhearing.com](http://www.okbhearing.com)

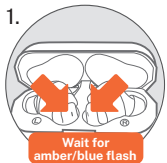
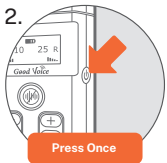

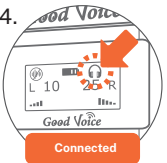
### Package Contents

| Item                       | Notes  |
|----------------------------|--|
| Wireless Earphones (L & R) | 1 pair of Small silicone ear tips pre-installed  |
| Charging/Storage Case      | USB-C input 5 V = 1 A  |
| Silicone Ear Tips          | 2 pairs each of Small, Medium, and Large<br>Ear Tip Outer Diameter:<br>S: 8 mm, M: 10 mm, L: 12 mm |

### Safety Information

- **WARNING – Accessory only:** Do not attempt to use the earphones without the Good Voice controller; the earphones will not work on their own.
- **CAUTION – Ear insertion:** Insert gently; if discomfort or the tip remains in the ear canal, seek medical help immediately.
- **CAUTION:** Keep the device and all components out of reach of children to prevent choking or accidental swallowing.
- **CAUTION:** Risk of explosion if battery is replaced by an incorrect type. Dispose of used batteries according to local regulations.
- **Environment:** Store and charge your devices in a dry location. Prolonged exposure to moisture can harm the hearing aids and charging case.
- **Electromagnetic compatibility:** This device meets IEC 60601-1-2 immunity/emissions requirements; keep a minimum distance from strong radio-frequency sources.
- **Modification prohibited:** To prevent a voided warranty, do not attempt to repair, disassemble, or modify the product.

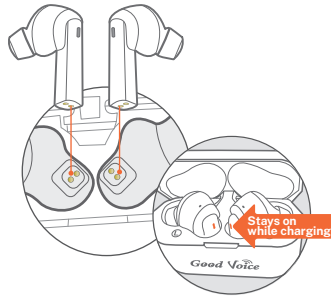
### Pairing Your New Earphones with Controller

- 
  - 
  - 
  - 
1. Open the lid of the charging case. The blue indicator lights on both earphones will flash, and you will hear “Power on.” Wait until the indicator lights flash **amber and blue alternately**, and the earphones say “Pairing.”
  2. Turn on the controller by pressing the **Power** button once.
  3. Press and hold the **Pairing** button on the controller for **5 seconds**. The screen will show a **Pairing** icon.
  4. Wait for pairing, once paired, the controller's screen will display the **Connected** icon, and the earphones will say “Connected, connected.”

For controller navigation and troubleshooting, see the main GV-SA03.60 OTC Hearing Aid User Manual.

## Battery & Charging

- To charge the case, use only the USB-C cable and adapter provided in the main hearing aid package. Charging accessories are not included in this earphone set.
- Fully charged earphones provide up to 6 hours of use. The on-the-go charging case offers an additional 2.5 charges (roughly 15 hours).
- A 5-minute charge offers approximately 20 minutes of use.
- Place the left earphone in the left cradle and the right earphone in the right cradle of the charging case. The indicator light on each earphone will turn solid amber, confirming that they are properly seated and charging correctly.



## Care & Maintenance

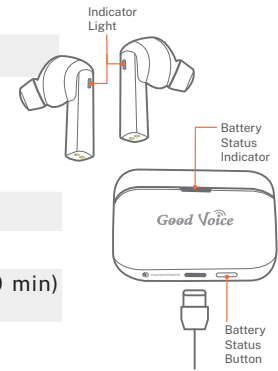
- Wipe the earphone shells with a soft cloth lightly moistened with water. Do not use alcohol.
- The device is not fully waterproof, so avoid exposing it to water or immersing it in any liquid.
- If not used regularly, recharge the case every 6 months to maintain battery health.
- Replace ear tips if they become dirty, cracked, deformed, or no longer fit securely.
- Reuse ear tips only if they are intact and undamaged. To clean the ear tips: Soak in mild soapy water (1:100), rinse thoroughly, and allow to air dry completely before reattaching.

## Warranty




30-day money-back guarantee and 1-year limited warranty against defects; retain proof of purchase. Full terms available in the main Good Voice User Manual.

## Earphones:

|             |   |                     |
|-------------|---|---------------------|
| Charging    |  | Amber light         |
| Low battery |  | Pulsing amber light |



## Charging case:

|               |   |   |
|---------------|---|---|
| Charging      |  | Pulsing green light                       |
| Low battery   |  | Pulsing amber light                       |
| Fully charged |  | Solid green light (10 min) then turns off |

## Technical Specifications

|                   |   |
|-------------------|---|
| Bluetooth version | 5.3   |
| Input rating      | Charging case: 5Vdc/1A, O/P 5Vdc/0.2A<br>Earphone: 5Vdc, 0.1A |
| Battery capacity  | Earphone: 70 mAh<br>Charging case: 550 mAh                    |
| Battery life      | Approx. 6 hours, additional 15 hours with charging case       |

## Manufacturer & Service

OK Biotech Co., Ltd.

No. 91, Sec. 2, Gongdao 5th Rd., Hsinchu 30070, Taiwan

Tel +886-3-516-0258

## U.S. Service Center

414C Cloverleaf Dr, Baldwin Park, CA 91706

+1-626-225-0621 | support@okbhearing.com