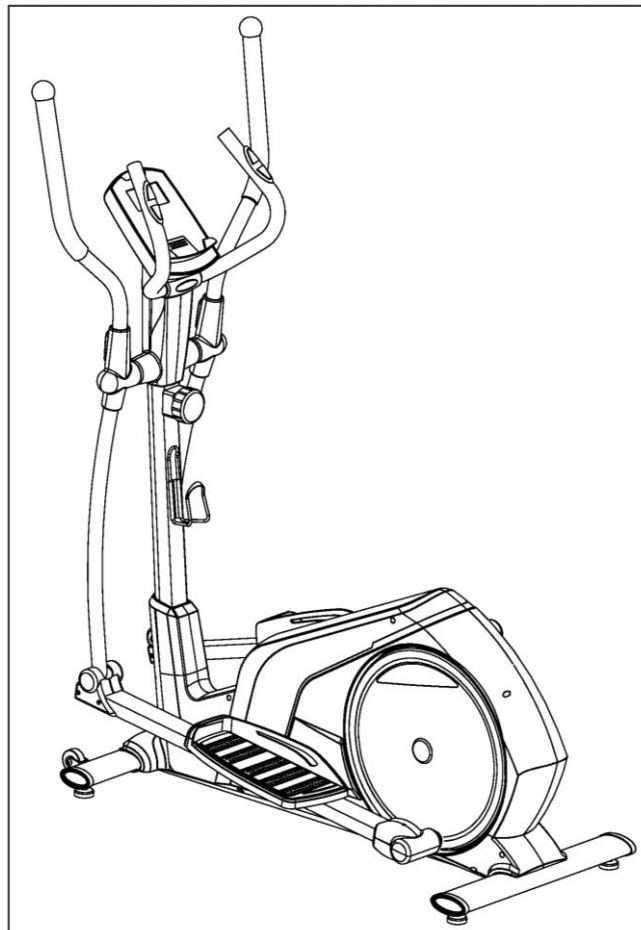




SMART 15-LEVEL MAGNETIC RESISTANCE ELLIPTICAL WITH LONG STRIDE SF-E323055 USER MANUAL



IMPORTANT! Please retain owner's manual for maintenance and adjustment instructions. Your satisfaction is very important to us, **PLEASE DO NOT RETURN UNTIL YOU HAVE CONTACTED US:** support@sunnyhealthfitness.com or 1-877-90SUNNY (877-907-8669).



WWW.SUNNYHEALTHFITNESS.COM

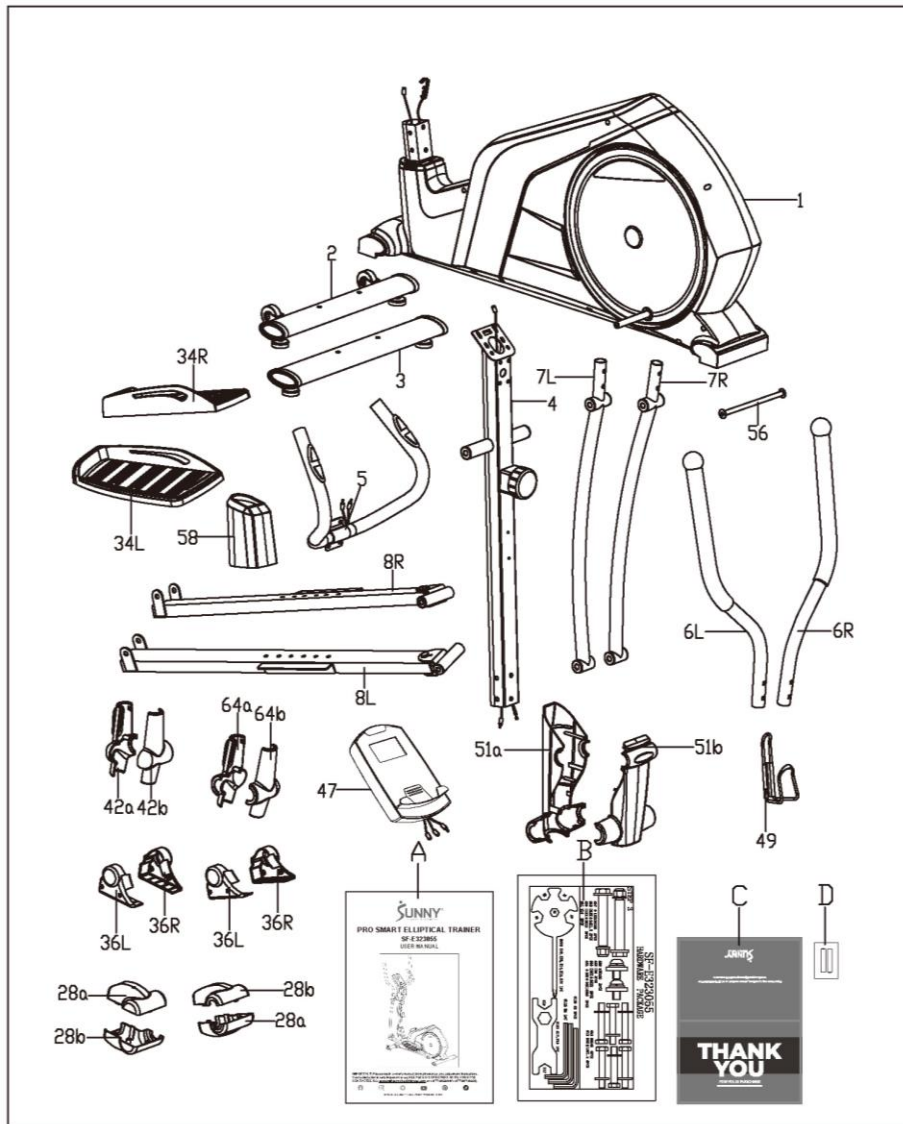
IMPORTANT SAFETY INFORMATION

We thank you for choosing our product. To ensure your safety and health, please use this equipment correctly. It is important to read this entire manual before assembling and using the equipment. Safe and effective use can only be achieved if the equipment is assembled, maintained and used properly. It is your responsibility to ensure that all users of the equipment are informed of all warnings and precautions.

1. Before starting any exercise program, you should consult your physician to determine if you have any medical or physical conditions that could put your health and safety at risk, or prevent you from using the equipment properly. Your physician's advice is essential if you are taking medication that affects your heart rate, blood pressure or cholesterol level.
2. Be aware of your body's signals. Incorrect or excessive exercise can damage your health. Stop exercising if you experience any of the following symptoms: pain, tightness in your chest, irregular heartbeat, shortness of breath, lightheadedness, dizziness or feelings of nausea. If you do experience any of these conditions, you should consult your physician before continuing with your exercise program.
3. Keep children and pets away from the equipment. The equipment is designed for adult use only.
4. Use the equipment on a solid, flat level surface with a protective cover for your floor or carpet. To ensure safety, the equipment should have at least 2 feet (60 cm) of free space all around it.
5. Ensure that all nuts and bolts are securely tightened before using the equipment. The safety of the equipment can only be maintained if it is regularly examined for damage and/or wear and tear.
6. Always use the equipment as indicated. If you find any defective components while assembling or checking the equipment, or if you hear any unusual noises coming from the equipment during exercise, discontinue use of the equipment immediately and do not use until the problem has been rectified.
7. Wear suitable clothing while using the equipment. Avoid wearing loose clothing that may become entangled in the equipment.
8. Do not place fingers or objects into the moving parts of the equipment.
9. The maximum weight capacity of this unit is 330 lbs (150 kgs).
10. The equipment is not suitable for therapeutic use.
11. To avoid bodily injury and/or damage to the product or property, proper lifting and moving is required.
12. Your product is intended for use in cool and dry conditions. You should avoid storage in extreme cold, hot or damp areas as this may lead to corrosion and other related problems.
13. This equipment is designed for indoor and home use only. It is not intended for commercial use!

PRE-ASSEMBLY CHECK LIST

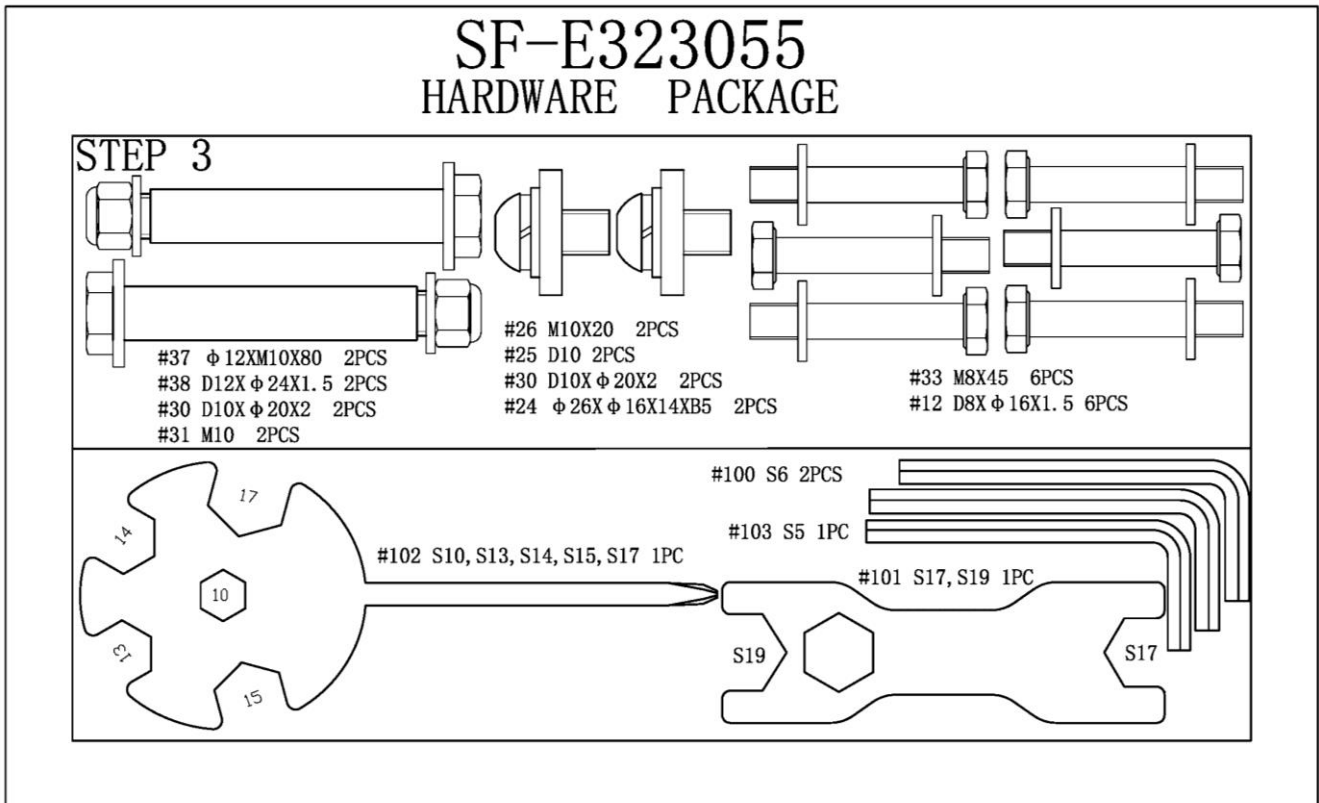
Before you start to assemble, please make sure all parts are included.



No.	Description	Spec.	Qty.
1	Main Frame		1
2	Front Stabilizer		1
3	Rear Stabilizer		1
4	Handlebar Post		1
5	Armrest		1
6L	Left Handlebar		1
6R	Right Handlebar		1
7L	Left Swing Bar		1
7R	Right Swing Bar		1
8L	Left Pedal Support		1
8R	Right Pedal Support		1
28a	Connecting Joint Cover A		2
28b	Connecting Joint Cover B		2
34L	Left Pedal		1
34R	Right Pedal		1
36L	Left Pedal Support Cover		2

36R	Right Pedal Support Cover		2
42a	Left Swing Bar Cover A		1
42b	Left Swing Bar Cover B		1
47	Meter	HR6028	1
49	Bottle Holder		1
51a	Protective Guard A		1
51b	Protective Guard B		1
56	Long Axle	Φ16X370	1
58	Front Tube Cover		1
64a	Right Swing Bar Cover A		1
64b	Right Swing Bar Cover B		1
A	Manual		1
B	Hardware Package		1
C	Thank You Card		1
D	Battery	AA	2

HARDWARE PACKAGE



Ordering Replacement Parts (U.S. and Canadian Customers only)

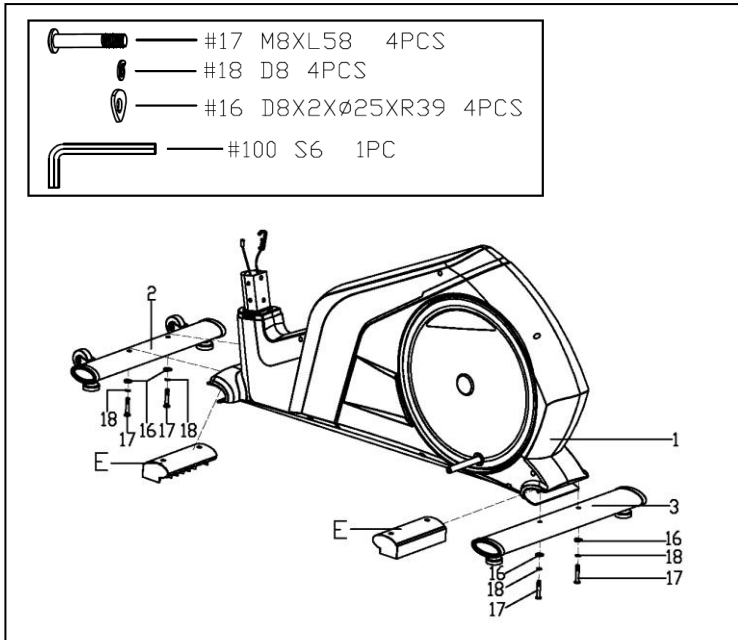
Please provide the following information in order for us to accurately identify the part(s) needed:

- ✓ The model number (found on cover of manual)
- ✓ The product name (found on cover of manual)
- ✓ The part number found on the “EXPLODED DIAGRAM” (page 14) and “PARTS LIST” (pages 12-13)

Please contact us at support@sunnyhealthfitness.com or 1-877-90SUNNY (877-907-8669).

ASSEMBLY INSTRUCTIONS

We value your experience using Sunny Health and Fitness products. For assistance with parts or troubleshooting, please contact us at support@sunnyhealthfitness.com or 1-877-90SUNNY (877-907-8669).

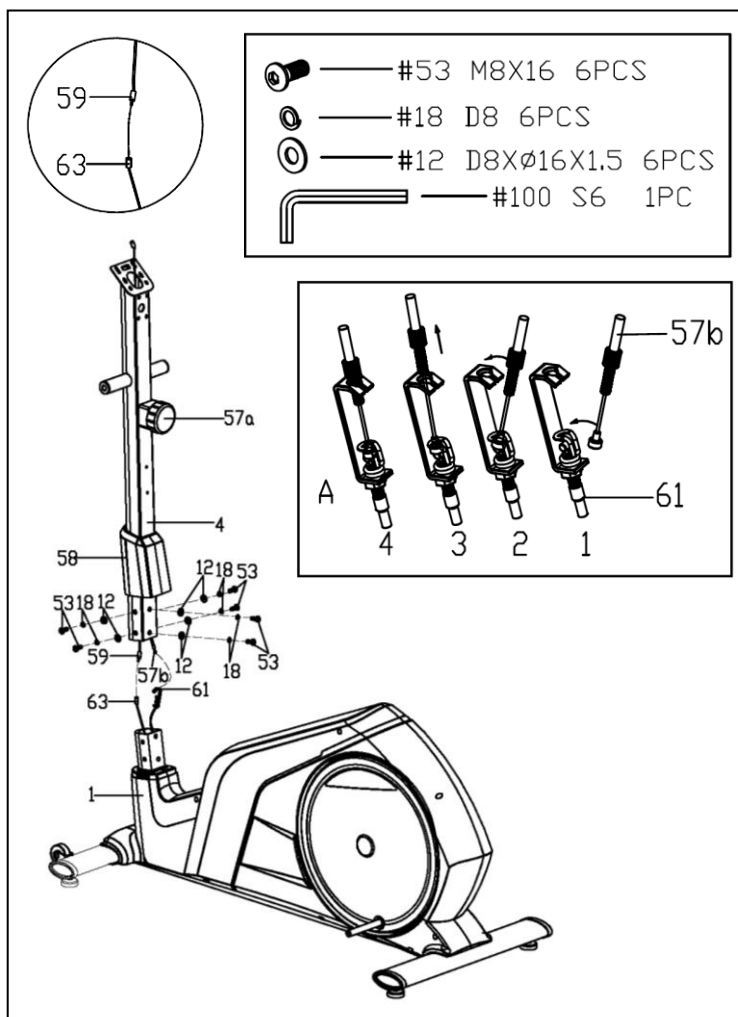


STEP 1:

Remove 4 Allen Bolts (No. 17), 4 Spring Washers (No. 18), 4 Arc Washers (No. 16) and 2 Plastic Tubes (No. E) from the Main Frame (No. 1) with Allen Wrench (No. 100).

Attach the Front Stabilizer (No. 2) and Rear Stabilizer (No. 3) onto the Main Frame (No. 1), secure with 4 Allen Bolts (No. 17), 4 Spring Washers (No. 18) and 4 Arc Washers (No. 16) with Allen Wrench (No. 100).

NOTE: Ensure that all bolts and washers are in place and partially threaded in before completely tightening any of them.



STEP 2:

Remove 6 Allen Bolts (No. 53), 6 Spring Washers (No. 18) and 6 Flat Washers (No. 12) from the Main Frame (No. 1) with Allen Wrench (No. 100).

Insert the Front Tube Cover (No. 58) onto the Handlebar Post (No. 4).

Connect the Sensor Wire (No. 63) with the Sensor Extension Wire (No. 59), and then connect Tension Hook (No. 61) with Tension Cable (No. 57b) as shown in Diagram A.

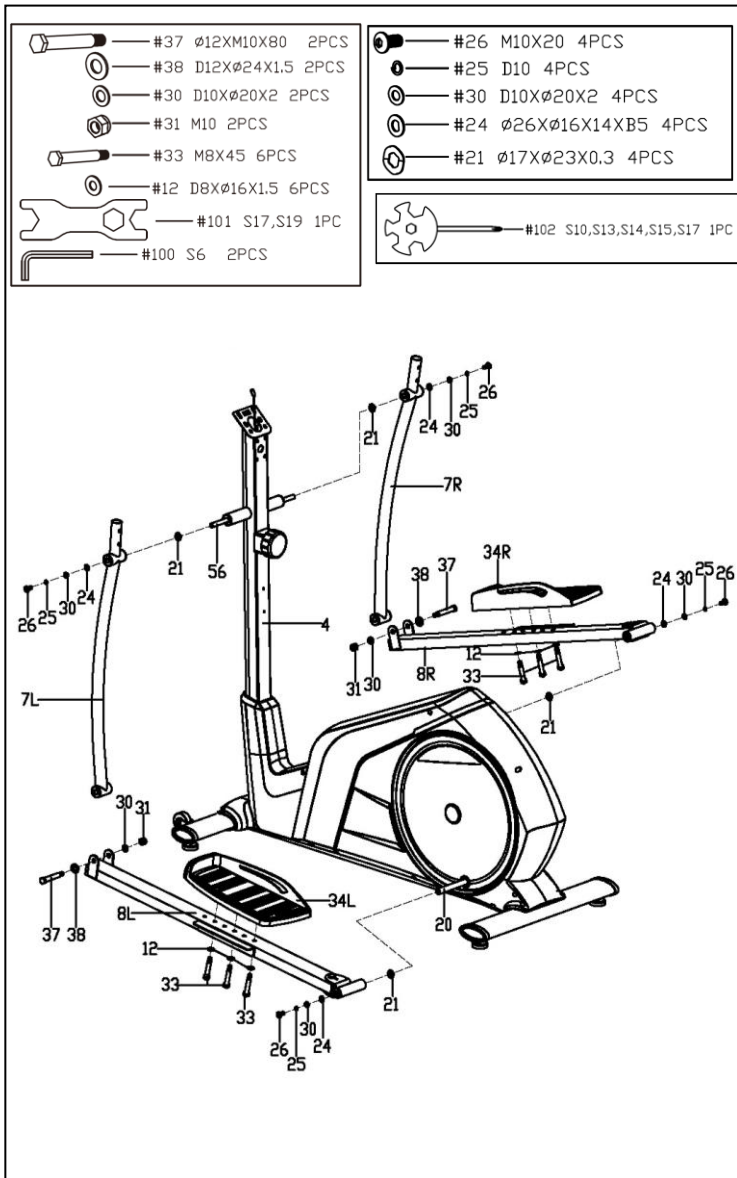
NOTE: Make sure the Tension Controller (No. 57a) is at the lowest level before you connect the Tension Cable (No. 57b). This ensures the wires are at their longest point. We recommend the assistance of a second person to help hold the Handlebar Post (No. 4). This will make the connection easier when you are attaching Tension Hook (No. 61) to Tension Cable (No. 57b).

Insert the Handlebar Post (No. 4) into the post of the Main Frame (No. 1) with 6 Allen Bolts (No. 53), 6 Spring Washers (No. 18) and 6 Flat Washers (No. 12) that were just removed. Tighten and secure with Allen Wrench (No. 100).

NOTE: Ensure that all bolts and washers are in place and partially threaded in before completely tightening any of them.

Slide the Front Tube Cover (No. 58) towards the Main Frame (No. 1).

We value your experience using Sunny Health and Fitness products. For assistance with parts or troubleshooting, please contact us at support@sunnyhealthfitness.com or 1-877-90SUNNY (877-907-8669).



STEP 3:

Remove 2 **Wave Washers (No. 21)**, 2 **D-shaped Washers (No. 24)**, 2 **Flat Washers (No. 30)**, 2 **Spring Washers (No. 25)** and 2 **Allen Bolts (No. 26)** from the **Long Axle (No. 56)** with 2 **Allen Wrenches (No. 100)**.

Insert the **Long Axle (No. 56)** into the **Handlebar Post (No. 4)**, then put on 2 **Wave Washers (No. 21)** that were just removed, on both sides of the **Long Axle (No. 56)**. Attach the **Left & Right Swing Bars (No. 7L & No. 7R)** on both sides of the **Long Axle (No. 56)** using 2 **D-shaped Washers (No. 24)**, 2 **Flat Washers (No. 30)**, 2 **Spring Washers (No. 25)** and 2 **Allen Bolts (No. 26)** that were just removed. Pre-secure with 2 **Allen Wrenches (No. 100)**.

NOTE: Do not completely tighten the **Allen Bolts (No. 26)** yet.

Attach the **Left & Right Pedal Supports (No. 8L & No. 8R)** onto 2 **Cranks (No. 20)** using 2 **Wave Washers (No. 21)** which are pre-assembled on the **Cranks (No. 20)**, 2 **D-shaped Washers (No. 24)**, 2 **Flat Washers (No. 30)**, 2 **Spring Washers (No. 25)** and 2 **Allen Bolts (No. 26)**. Pre-secure with the **Allen Wrench (No. 100)**.

NOTE: Do not completely tighten the **Allen Bolts (No. 26)** yet.

Attach the **Left & Right Swing Bars (No. 7L & No. 7R)** to the **Left & Right Pedal Supports (No. 8L & No. 8R)** with 2 **Hex Bolts (No. 37)**, 2 **Flat Washers (No. 38)**, 2 **Flat Washers (No. 30)** and 2 **Nylon Nuts (No. 31)**. Tighten and secure with **Spanner (No. 101)** and **Spanner (No. 102)**.

Tighten all 4 **Allen Bolts (No. 26)** tightly now.

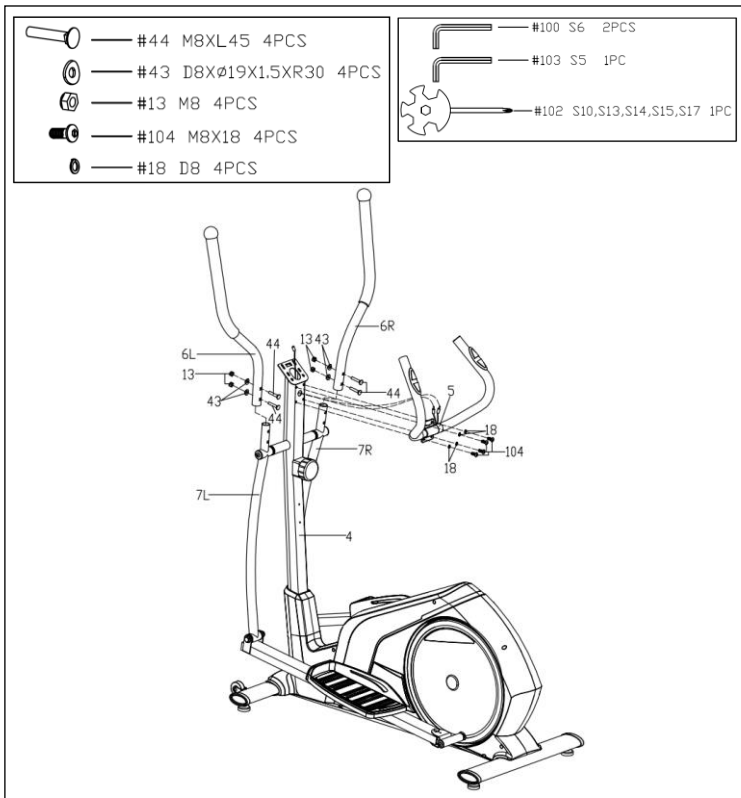
Secure the **Left & Right Pedals (No. 34L & No. 34R)** to the **Left & Right Pedal Supports (No. 8L & No. 8R)** respectively with 6 **Hex Bolts (No. 33)** and 6 **Flat Washers (No. 12)** using **Spanner (No. 102)**.

CAUTION:

Both pedals are labeled L and R; L for LEFT and R for RIGHT.

NOTE: There are 2 positions on the **Left & Right Pedal Supports (No. 8L & No. 8R)**, numbered 1 and 2, that you can install the **Left & Right Pedals (No. 34L & No. 34R)**. Adjust the pedal position to suit your comfort level. Make sure both **Left & Right Pedals (No. 34L & No. 34R)** are set at the same position numbers.

We value your experience using Sunny Health and Fitness products. For assistance with parts or troubleshooting, please contact us at support@sunnyhealthfitness.com or 1-877-90SUNNY (877-907-8669).



STEP 4:

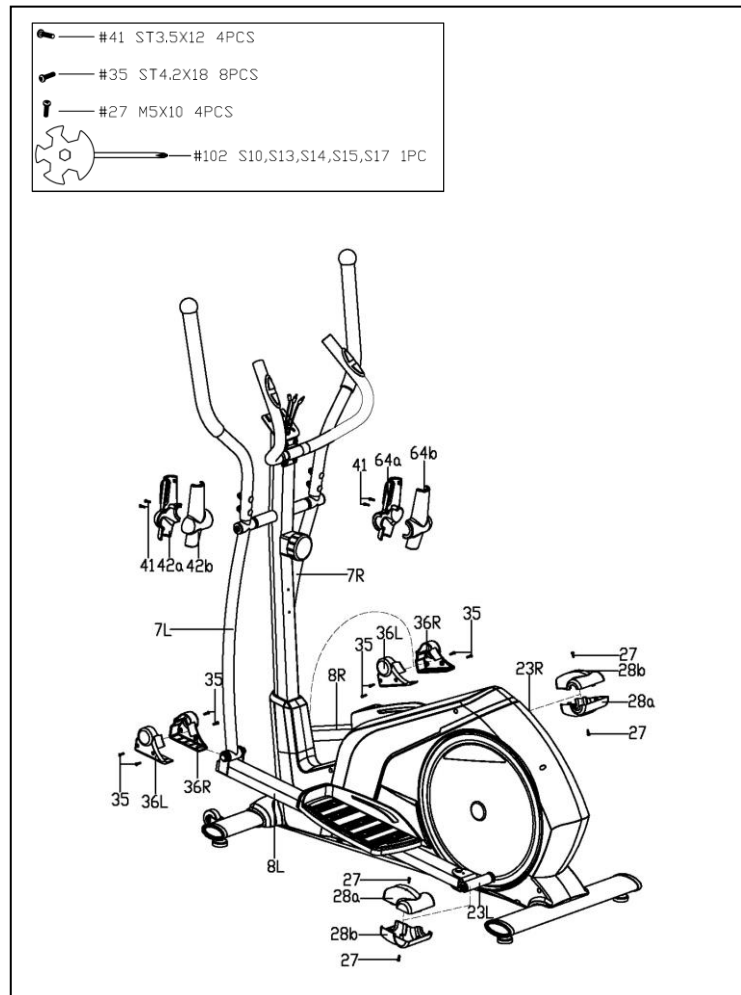
Remove 4 Carriage Bolts (No. 44), 4 Arc Washers (No. 43) and 4 Nylon Nuts (No. 13) from the Left & Right Handlebars (No. 6L & No. 6R) using Spanner (No. 102). Attach the Left & Right Handlebars (No. 6L & No. 6R) onto the Left & Right Swing Bars (No. 7L & No. 7R) with 4 Carriage Bolts (No. 44), 4 Arc Washers (No. 43) and 4 Nylon Nuts (No. 13) that were just removed. Tighten and secure with Spanner (No. 102).

Remove 4 Allen Bolts (No. 104) and 4 Spring Washers (No. 18) from the Handlebar Post (No. 4) using Allen Wrench (No. 103).

Thread the 2 wires on the Armrest (No. 5) from the hole on the front side of the Handlebar Post (No. 4) and pull them out from the top of the Handlebar Post (No. 4).

Attach the Armrest (No. 5) to the Handlebar Post (No. 4) in place. Secure it with 4 Allen Bolts (No. 104) and 4 Spring Washers (No. 18) that were just removed using Allen Wrench (No. 103).

NOTE: If the Left & Right Handlebars (No. 6L & No. 6R) rubs against the Armrest (No. 5) during the workout, please recheck if the Left & Right Handlebars (No. 6L & No. 6R) is assembled to Left & Right Swing Bars (No. 7L & No. 7R) according to the label marked with L or R.



STEP 5:

Remove 4 Screws (No. 41) from the Left Swing Bar Covers A/B (No. 42a/b) and Right Swing Bar Covers A/B (No. 64a/b) respectively using Spanner (No. 102).

Secure Left Swing Bar Covers A/B (No. 42a/b) to the Left Swing Bar (No. 7L) with 2 Screws (No. 41) that were just removed using Spanner (No. 102).

Secure Right Swing Bar Covers A/B (No. 64a/b) to the Right Swing Bar (No. 7R) with 2 Screws (No. 41) that were just removed using Spanner (No. 102).

Remove 8 Screws (No. 35) from Left & Right Pedal Supports (No. 8L & No. 8R) using Spanner (No. 102).

Attach 2 pairs of Left & Right Pedal Support Covers (No. 36L & No. 36R) to the 2 joints of the Left & Right Swing Bars (No. 7L & No. 7R) and Left & Right Pedal Supports (No. 8L & No. 8R) respectively with 8 Screws (No. 35) that were just removed using Spanner (No. 102).

Remove 4 Screws (No. 27) from the Left & Right Connecting Joints (No. 23L & No. 23R) using Spanner (No. 102).

Attach 2 pairs of Connecting Joint Covers A/B (No. 28a/b) to the Left & Right Connecting Joints (No. 23L & No. 23R) respectively with 4 Screws (No. 27) that were just removed using Spanner (No. 102).

We value your experience using Sunny Health and Fitness products. For assistance with parts or troubleshooting, please contact us at support@sunnyhealthfitness.com or 1-877-90SUNNY (877-907-8669).

STEP 6:

Remove 4 **Screws (No. 52)** from the **Meter (No. 47)** using **Spanner (No. 102)**.

Connect the **Sensor Extension Wire (No. 59)** with the **Meter Wire A (No. 47a)**.
Connect 2 **Pulse Wires (No. 62)** to the **Meter Wire B & C (No. 47b & No. 47c)**.

Attach the **Meter (No. 44)** to the bracket of the **Handlebar Post (No. 4)** using 4 **Screws (No. 52)** that were just removed. Tighten and secure with **Spanner (No. 102)**.

NOTE: To avoid damaging the wires, please push them into the **Handlebar Post (No. 4)** before securing the **Meter (No. 47)** onto the bracket.

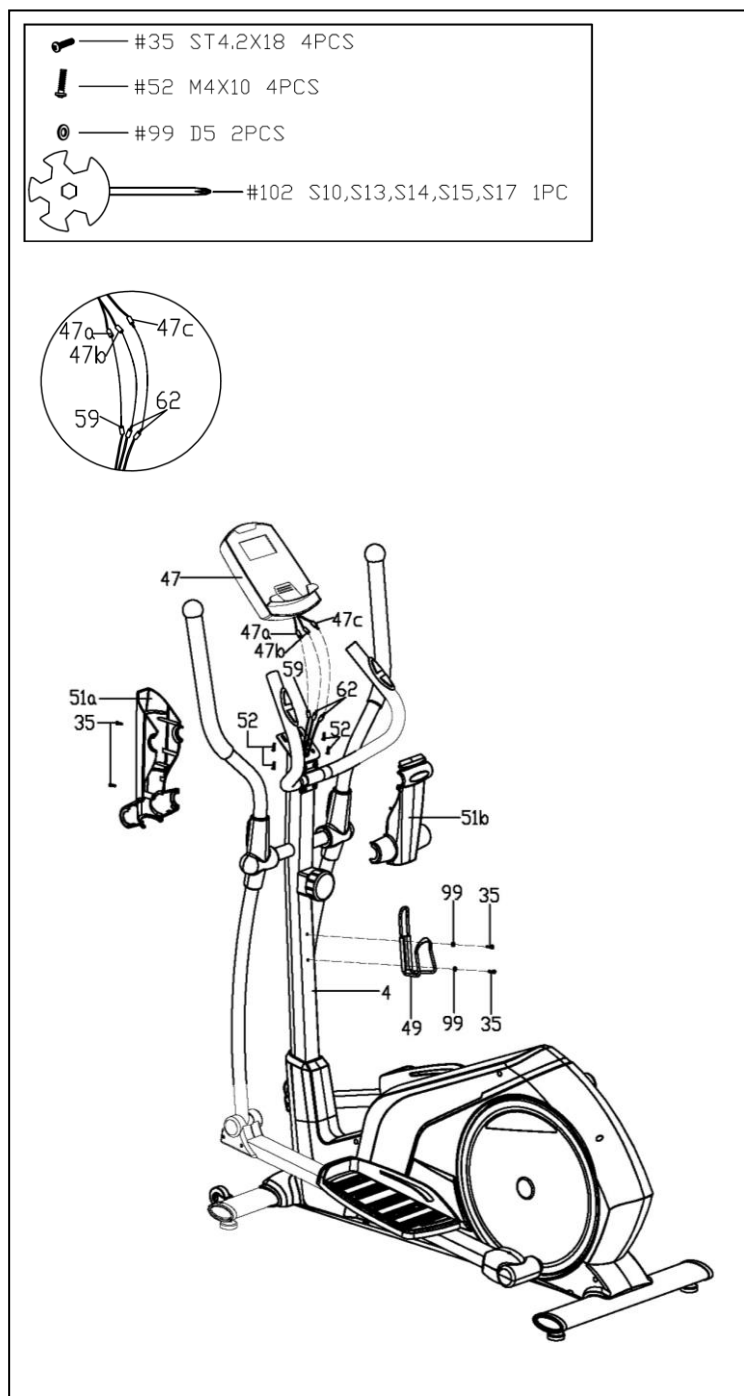
Remove 2 **Screws (No. 35)** from the **Protective Guards A/B (No. 51a/b)** using **Spanner (No. 102)**.

Attach the **Protective Guards A/B (No. 51a/b)** to the **Handlebar Post (No. 4)** with 2 **Screws (No. 35)** that were just removed using **Spanner (No. 102)**.

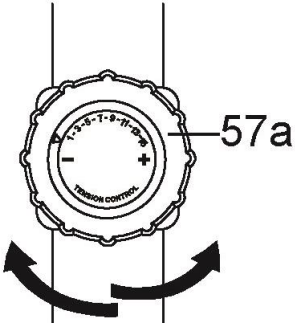
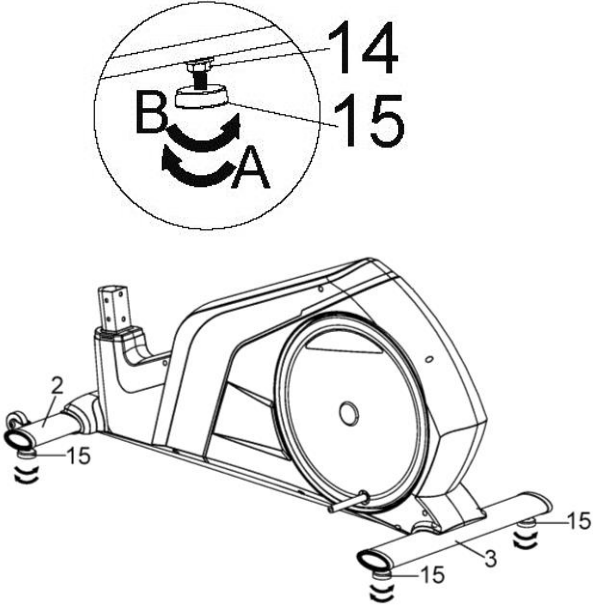
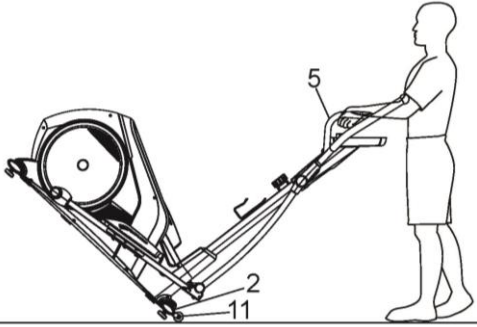
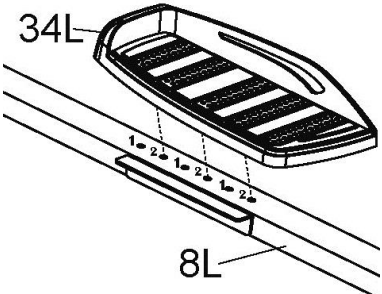
Remove 2 **Screws (No. 35)** and 2 **Flat Washers (No. 99)** from the **Handlebar Post (No. 4)** using **Spanner (No. 102)**.

Attach the **Bottle Holder (No. 49)** to the **Handlebar Post (No. 4)** with 2 **Screws (No. 35)** and 2 **Flat Washers (No. 99)** that were just removed using **Spanner (No. 102)**.

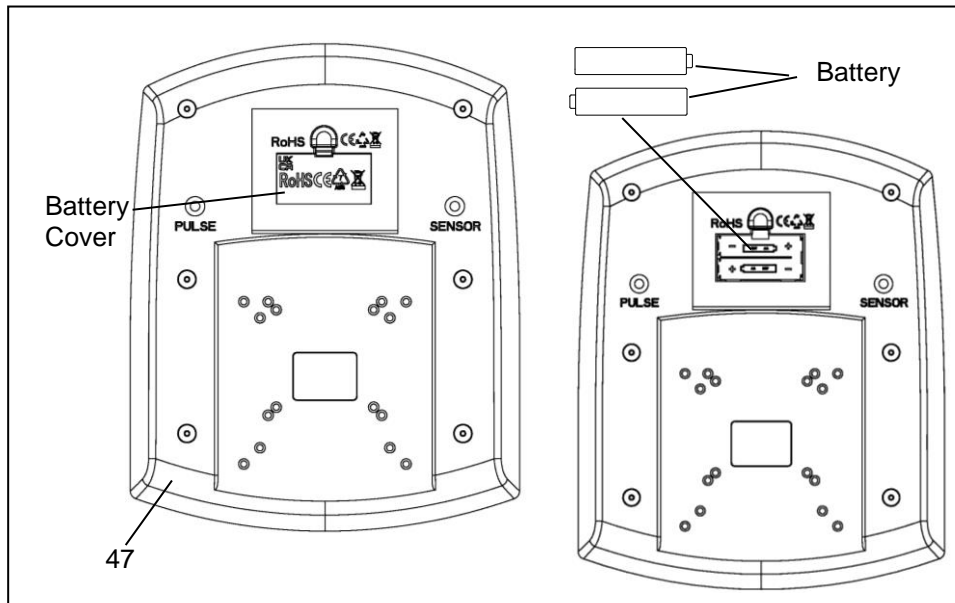
THE ASSEMBLY IS COMPLETE!



ADJUSTMENT GUIDE

	<p>ADJUSTING THE TENSION</p> <p>Adjust the tension by rotating the Tension Controller (No. 57a) <i>clockwise</i> to increase the level of resistance. Rotate the Tension Controller (No. 57a) <i>counter-clockwise</i> to decrease the level of resistance.</p> <p>Tension levels are set at Level 1 being the lowest and Level 15 being the highest.</p>
	<p>ADJUSTING THE LEVEL</p> <p>To achieve smooth and comfortable use, you must ensure that the elliptical is stable and secure. If you notice that the elliptical is unbalanced during use, you should adjust the Adjustable Pads (No. 15). There are 4 Adjustable Pads (No. 15) located beneath the Front & Rear Stabilizers (No. 2 & No. 3). To do so, loosen the Hex Nut (No. 14) on the Adjustable Pad (No. 15) by turning it <i>clockwise</i> (direction A). With the Hex Nut (No. 14) loosened, rotate Adjustable Pad (No. 15) until it sits level with the surface that the elliptical is on. When you have finished adjusting the Adjustable Pad (No. 15), re-tighten the Hex Nut (No. 14) by turning it <i>counter-clockwise</i> (direction B). If necessary, repeat this process to adjust the remaining Adjustable Pads (No. 15).</p>
	<p>HOW TO MOVE THE ELLIPTICAL</p> <p>There are Transportation Wheels (No. 11) located on the Front Stabilizer (No. 2). Hold the Armrest (No. 5) and press down the front of the elliptical off the floor until the Transportation Wheels (No. 11) touch the ground. Now you can move the elliptical.</p>
	<p>HOW TO ADJUST THE PEDAL</p> <p>There are 2 positions on the Left & Right Pedal Supports (No. 8L & No. 8R), numbered 1 and 2, that you can install the Left & Right Pedals (No. 34L & No. 34R). Adjust the pedal position to suit your comfort level. Make sure both Left & Right Pedals (No. 34L & No. 34R) are set at the same position numbers.</p>

BATTERY INSTALLATION & REPLACEMENT



BATTERY INSTALLATION

1. Take out 2 AA batteries from meter box.
2. Press the buckle of battery cover on the **Meter (No. 47)**, then remove battery cover.
3. Install 2 AA batteries into the battery case on the back of the **Meter (No. 47)**. Pay attention to the battery + and – poles before installing.
4. Press the buckle of battery cover, then put the battery cover back to the back of the **Meter (No. 47)**.

The installation is complete!

BATTERY REPLACEMENT

1. Press the buckle of battery cover on the back of the **Meter (No. 47)**, then remove battery cover.
2. Remove the 2 old AA batteries in the battery case and install 2 new AA batteries into the battery case on the back of the **Meter (No. 47)**. Pay attention to the battery + and – poles before installing.
3. Press the buckle of battery cover, then put the battery cover back to the back of the **Meter (No. 47)**.

The replacement is complete!

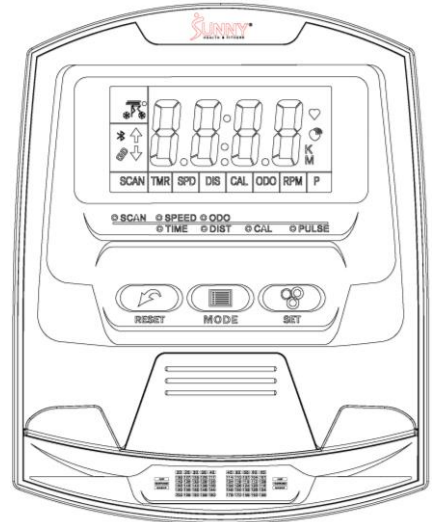
BATTERY DISPOSAL

Dispose the batteries according to the laws and regulations of your local region. Some batteries may be recycled. When disposing or recycling, do not mix battery types.

EXERCISE METER

SPECIFICATIONS:

TMR (TIME).....	0:00-99:59
SPD (SPEED).....	0.0-99.9 ML/H
DIS (DISTANCE).....	0.00-999.9 ML
CAL (CALORIES).....	0.0-9999 KCAL
ODO (ODOMETER).....	0.0-9999 ML
P (PULSE)	0-255 BPM



KEY FUNCTIONS:

MODE: Press the key to select and lock on to a particular function you want.

Press and hold this key for 2 seconds to clear data, except for ODO (ODOMETER).

Press and hold this key for 6 seconds to disconnect from both the SunnyFit APP and the heart rate monitor; then the meter will enter sleep mode.

SET: Press the key to set the target values for TMR (TIME), DIS (DISTANCE), CAL (CALORIES), P (PULSE).

RESET: Press the key to reset the value to zero.

NOTE: The SET & RESET keys are available only when not exercising and when there is no APP connection.

OPERATION PROCEDURES:

1. AUTO ON/OFF:

The system turns on when any key is pressed or when it senses an input from the speed sensor.

In stop mode and Bluetooth is not connected, the meter will shut off automatically and disconnect the heart rate monitor if there is no activity for 4 minutes.

2. RESET: The meter can be reset by pressing the RESET button or changing the batteries.

3. MODE: To choose to SCAN or LOCK. If you do not want to be in scan mode, press the MODE key when the pointer is on the function you want.

FUNCTIONS:

1. **TMR (TIME):** Press the MODE key until the pointer locks onto TMR (TIME). The time since starting exercise will be shown. In stop mode and Bluetooth is not connected, press the MODE key to select the TMR (TIME) function, then press the SET key to set a target value. The meter will count down from the target value during exercise.

2. **SPD (SPEED):** Press the MODE key until the pointer locks onto SPD (SPEED). The current speed will be shown.

3. **DIS (DISTANCE):** Press the MODE key until the pointer locks onto DIS (DISTANCE). The distance of each workout will be shown. In stop mode and Bluetooth is not connected, press the MODE key to select the DIS (DISTANCE) function, then press the SET key to set a target value. The meter will count down from the target value during exercise.

4. **CAL (CALORIES):** Press the MODE key until the pointer locks onto CAL (CALORIES). The calories burned since starting exercise will be shown. In stop mode and Bluetooth is not connected, press the MODE key to select the CAL (CALORIES) function, then press the SET key to set a target value. The meter will count down from the target value during exercise.

5. **ODO (ODOMETER):** Press the MODE key until the pointer locks onto ODO (ODOMETER). The total accumulated distance will be shown.

6. **P (PULSE):** Press the MODE key until the pointer locks onto P (PULSE). User's current heart rate will be shown in beats per minute. Place the palms of your hands on both pulse sensors or connect to the SunnyFit Heart Rate Monitor (HR200) and wait 30 seconds for the most accurate reading.

In stop mode and Bluetooth is not connected, press the MODE key to select the (P) PULSE function, then press the SET key to set a target value. The meter will display the target value, even when your palms are on the pulse sensors or connect to the HR200, while in stop mode. Once you begin the workout, the meter will display the current pulse value. If your pulse value surpasses the target value, the meter will "Beep" every 5 seconds.

NOTE: This data is for reference only and cannot be used for medical purposes.

7. SCAN: Automatically cycles through functions every 4 seconds.

BATTERY: If meter display is not functioning correctly, please reinstall the batteries.

BLUETOOTH

1. The Bluetooth icon will flash when the meter is on or wakes from sleep mode. If no Bluetooth connection is established within 3 minutes, the Bluetooth icon will turn off.
2. The Bluetooth icon will stay on when it is connected.

WIRELESS HEART RATE

1. The wireless heart rate icon will flash when the meter is on. If the heart rate monitor is not connected within 1 minute, the wireless heart rate icon will turn off.
2. After exercise resumes, the wireless heart rate icon will flash. If the heart rate monitor is not connected within 1 minute, the wireless heart rate icon will turn off.
3. When the meter wakes from sleep mode, the wireless heart rate icon will flash. If the heart rate monitor is not connected within 1 minute, the wireless heart rate icon will turn off.
4. The wireless heart rate icon will flash when the MODE key is pressed. If the heart rate monitor is not connected within 1 minute, the wireless heart rate icon will turn off.
5. The wireless heart rate icon will stay on when the heart rate monitor is connected.

NOTE: The heart rate monitor is not included. Wireless heart rate function works with SunnyFit Heart Rate Monitor HR200. HR200 can only connect to the computer when the wireless heart rate icon is flashing.

TECHNICAL DATA

Connectivity: Bluetooth LE

Frequency Range: 2400~2483.5 Mhz

Transmitting Power: 0 dBm

APP CONNECTION:

Connect Smart Equipment to SunnyFit App:

1. Scan to download SunnyFit from the app store:



2. Ensure that the Bluetooth function is turned on from your mobile device.
3. If this is your first time using the SunnyFit app, follow the in-app instructions to register for your free SunnyFit account and log in.
4. Begin any workout activity that matches your smart equipment, then follow the onscreen prompts to search for and connect to your smart equipment.
5. When connected, your stats and records will be displayed at the end of your course/session and recorded in your account profile!

Troubleshooting:

- If you are having trouble connecting your smart equipment, visit www.sunnyfit.com/guide or scan the QR code below:



- If you require additional support, please contact support@sunnyfit.com.

PARTS LIST

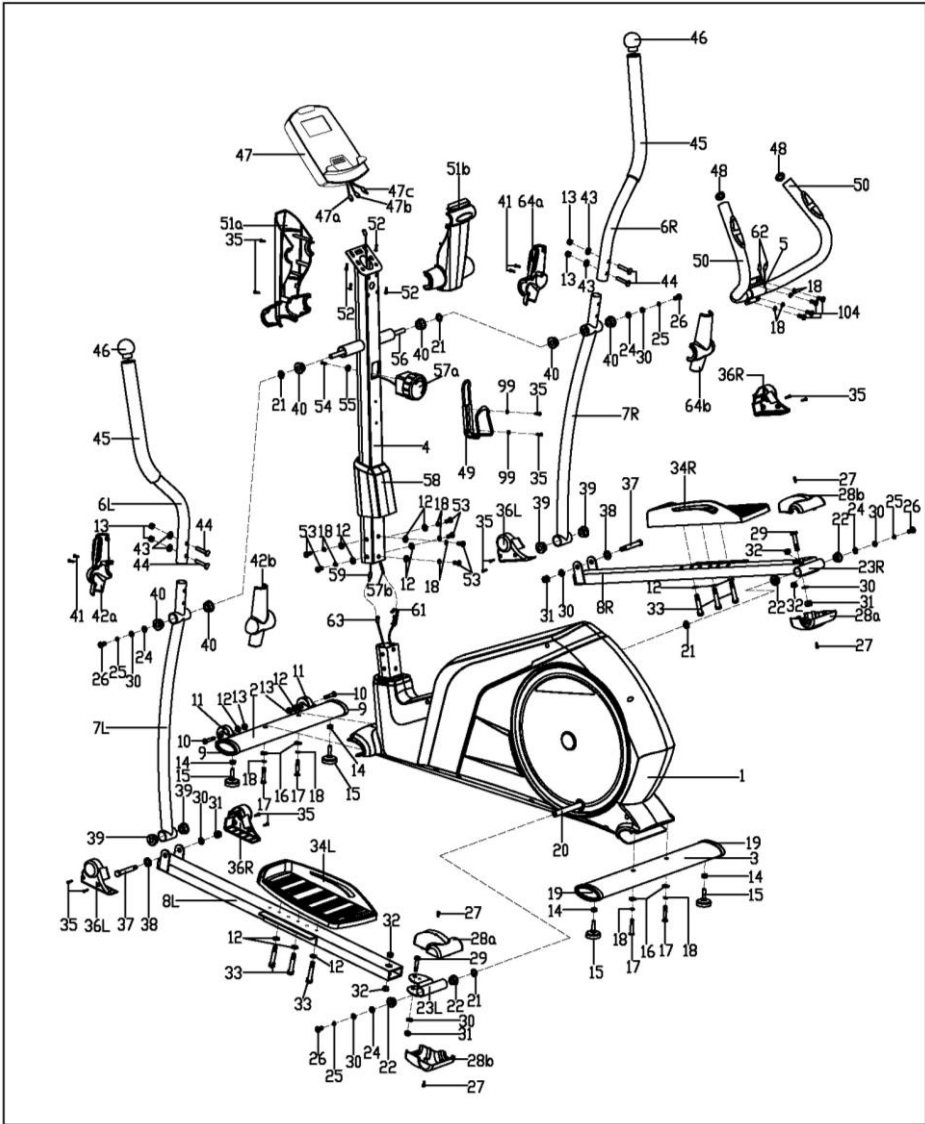
No.	Description	Spec.	Qty.
1	Main Frame		1
2	Front Stabilizer		1
3	Rear Stabilizer		1
4	Handlebar Post		1
5	Armrest		1
6L	Left Handlebar		1
6R	Right Handlebar		1
7L	Left Swing Bar		1
7R	Right Swing Bar		1
8L	Left Pedal Support		1
8R	Right Pedal Support		1
9	End Cap	80X40X1.5	2
10	Allen Bolt	M8X38XL12	2
11	Transportation Wheel	Φ50X21	2
12	Flat Washer	D8XΦ16X1.5	14
13	Nylon Nut	M8	6
14	Hex Nut	M10	4
15	Adjustable Pad	M10X30	4
16	Arc Washer	D8X2XΦ25XR39	4
17	Allen Bolt	M8XL58	4
18	Spring Washer	D8	14
19	End Cap	95X40X2	2
20	Crank		2
21	Wave Washer	Φ17XΦ23X0.3	4
22	Plastic Bushing	Φ24X16XΦ16.1	4
23L	Left Connecting Joint		1
23R	Right Connecting Joint		1
24	D-shaped Washer	Φ26XΦ16X14XB5	4
25	Spring Washer	D10	4
26	Allen Bolt	M10X20	4
27	Screw	M5X10	4
28a	Connecting Joint Cover A		2
28b	Connecting Joint Cover B		2
29	Hex Bolt	M10X55	2
30	Flat Washer	D10XΦ20X2 Black	8
31	Nylon Nut	M10	5
32	Bushing	Φ18XΦ10X11	4
33	Hex Bolt	M8X45	6
34L	Left Pedal		1
34R	Right Pedal		1
35	Screw	ST4.2X18	37
36L	Left Pedal Support Cover		2
36R	Right Pedal Support Cover		2
37	Hex Bolt	Φ12XM10X80	2
38	Flat Washer	D12XΦ24X1.5	2
39	Axle Bushing	Φ12XΦ32X15	4
40	Bushing	Φ16XΦ31X23	6
41	Screw	ST3.5X12	4
42a	Left Swing Bar Cover A		1
42b	Left Swing Bar Cover B		1
43	Arc Washer	D8XΦ19X1.5XR30	4
44	Carriage Bolt	M8XL45	4
45	Foam Grip	Φ31XΦ37X480	2
46	Round Cap	Φ25X2	2

No.	Description	Spec.	Qty.
47	Meter	HR6028	1
47a	Meter Wire A		1
47b	Meter Wire B		1
47c	Meter Wire C		1
48	Round Cap	Φ32X1.5	2
49	Bottle Holder		1
50	Foam Grip	Φ24XΦ30X460	2
51a	Protective Guard A		1
51b	Protective Guard B		1
52	Screw	M4X10	4
53	Allen Bolt	M8X16	6
54	Screw	M5X55	1
55	Arc Washer	D5	1
56	Long Axle	Φ16X370	1
57a	Tension Controller	15 levels	1
57b	Tension Cable	615mm	1
58	Front Tube Cover		1
59	Sensor Extension Wire	1100mm	1
60	Flat Washer	D10XΦ20X2 Zinc	1
61	Tension Hook	1600mm	1
62	Pulse Wire	800mm	2
63	Sensor Wire	1500mm	1
64a	Right Swing Bar Cover A		1
64b	Right Swing Bar Cover B		1
65	Spring Washer	D6	6
66	Flat Washer	D6	2
67	Axle Stop Ring	D12	2
68	Magnetic Board		1
69	Square Magnet	32X15X8	14
70	Spring	Φ1.6XΦ15XL61	1
71	Magnetic Board Axle	Φ12X59.5XM6X15	1
72	Hex Bolt	M5X60	1
73	Hex Nut	M5	2
74	Sensor Seat		1
75	Axle Stop Ring	D15	2
76	Bearing	6004	2
77	Disc Cap		2
78	Disc		2
79	Flange Nut	M10X1.25	2
80	Hex Nut	M10X1.0	2
81	Hex Nut	M6	2
82	Adjusting U Washer	3X30X15	2
83	Adjusting Belt Bolt	M6X50	2
84	Thin Nut	M10X1.0	2
85	Spacer	D10X3	2
86	Bearing	6000	2
87	Flywheel	Φ280	1
88	Flywheel Axle	M10X1.0X118	1
89	Bolt	M6X15	4
90	Belt Pulley	Φ260	1
91	Centre Axle	Φ15X140	1
92	Nylon Nut	M6	4
93	Belt	470	1
94	Hex Screw	M10X40	1

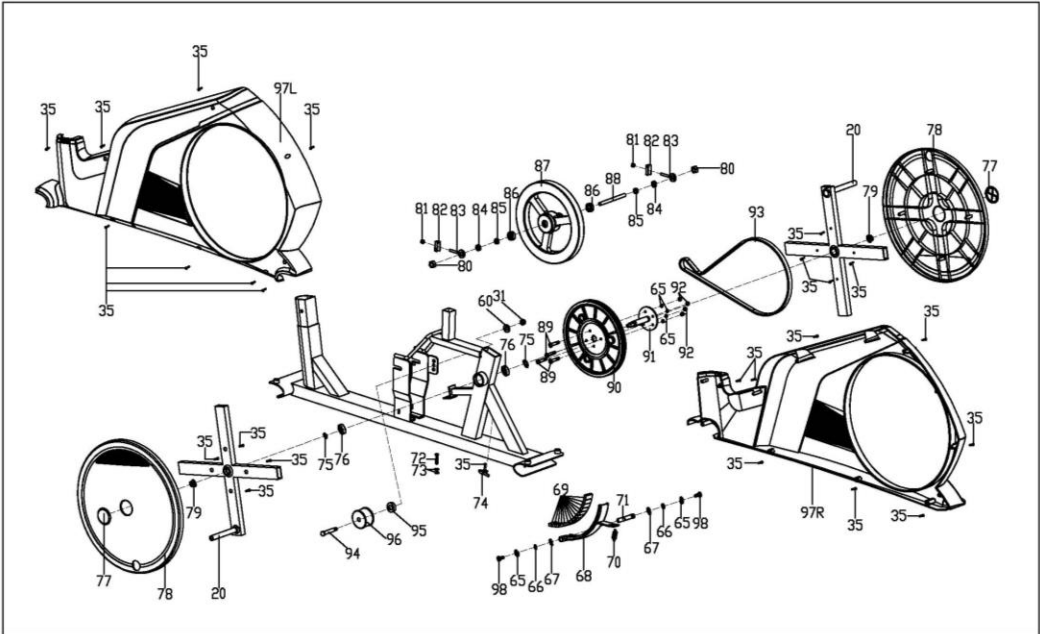
No.	Description	Spec.	Qty.
95	Spacer	D10XΦ18X6	1
96	Idler Wheel	Φ43.5X25	1
97L	Left Belt Cover		1
97R	Right Belt Cover		1
98	Hex Screw	M6X16	2
99	Flat Washer	D5	2

No.	Description	Spec.	Qty.
100	Allen Wrench	S6	2
101	Spanner	S17,S19	1
102	Spanner	S10,S13,S14,S15,S17	1
103	Allen Wrench	S5	1
104	Allen Bolt	M8X18	4

EXPLODED DIAGRAM 1



EXPLODED DIAGRAM 2



Version: 2.0



CONNECT
with us

DOWNLOAD

Track your fitness progress & join
FREE workout courses!

Download  **SUNNYFIT** today!



FOLLOW

Find us on social media @sunnyhealthfitness

 @sunnyhealthfitness

 @sunnyhealthandfitness

 @sunnyhealthfit

 /sunnyhealthfitness

 /sunnyhealthfitness

 /sunnyhealthandfitness

www.sunnyhealthfitness.com